

S
A
N
T
A
F
E
T
R
A
I
L



PHOTOGRAPH 1

Lower Cimarron Spring National Historic Landmark

Approximately 12 miles south of Ulysses, Grant County, Kansas

Photographer: Arnold Thalheimer

Date: September 1993

Location of Negative: National Park Service, Omaha, Nebraska

Description/View: General overview of the Lower Cimarron Spring site, view to the northeast. The area includes several segments of the Santa Fe Trail.



PHOTOGRAPH 2

Lower Cimarron Spring National Historic Landmark

Approximately 12 miles south of Ulysses, Grant County, Kansas

Photographer: Arnold Thalheimer

Date: September 1993

Location of Negative: National Park Service, Omaha, Nebraska

Description/View: Santa Fe Trail ruts; view looking southwest. The ruts, which are located in the area with higher grass, pass between the Wagon Bed Springs Chapter of the Santa Fe Trail Association's display in the background on the right, and the historic location of Lower Cimarron Spring near the bend of the Cimarron River on the left.



PHOTOGRAPH 3

Lower Cimarron Spring National Historic Landmark

Approximately 12 miles south of Ulysses, Grant County, Kansas

Photographer: Arnold Thalheimer

Date: September 1993

Location of Negative: National Park Service, Omaha, Nebraska

Description/View: The rectangular-shaped depression of the Joyce-Dappert ice house is in the center of the photograph; view looking south. The Cimarron River bend where the spring was located is in the background.



LOWER CIMMARON SPRING
Grant County, Kansas
Joyce-Dappert ice house depression
Photo by Arnold Thallheimer, 9/93



LOWER CIMARRON SPRING
Grant County, Kansas
Historic location of now-dry spring
Photo by Arnold Thallheimer, 9/93



PHOTOGRAPH 6

Lower Cimarron Spring National Historic Landmark

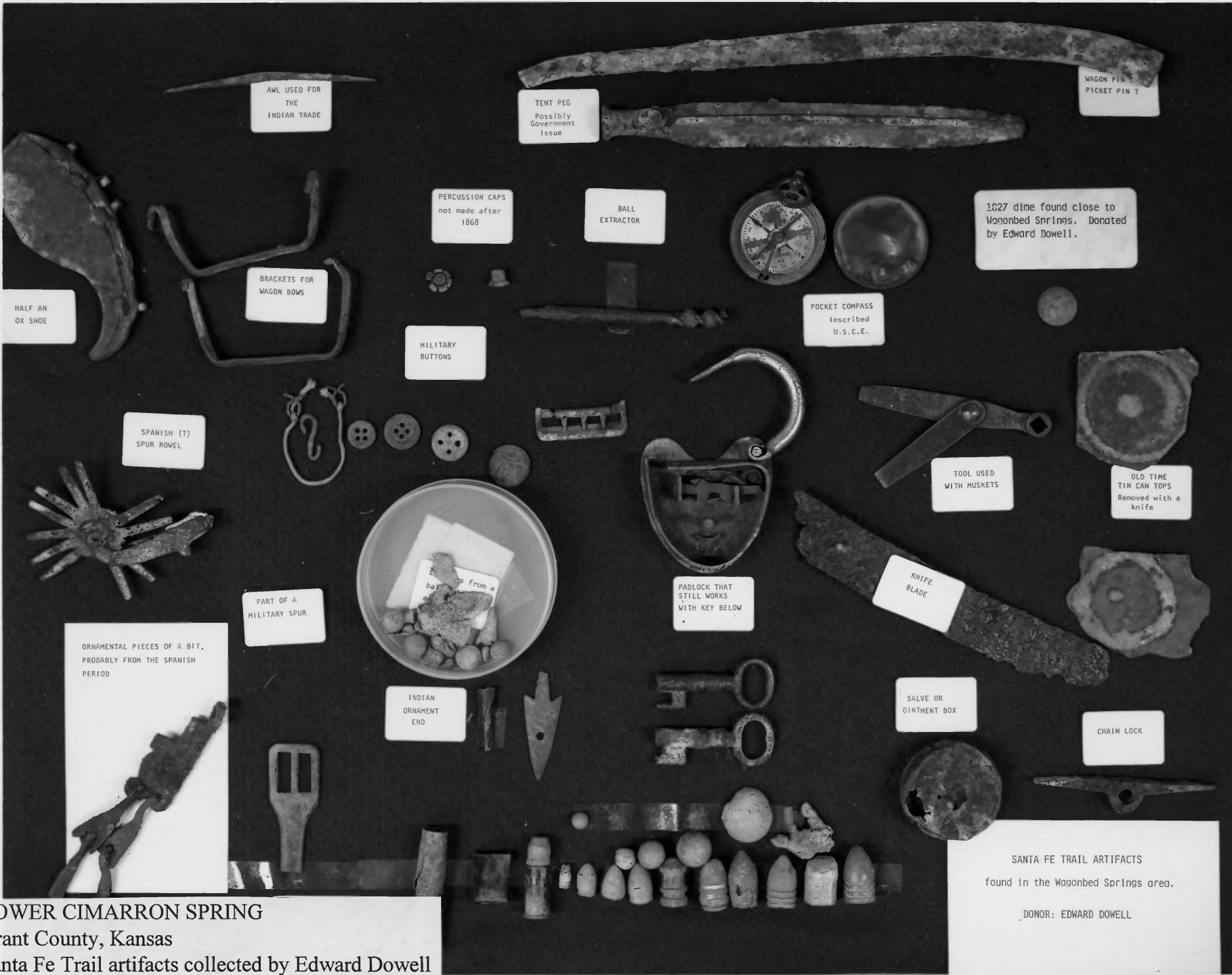
Approximately 12 miles south of Ulysses, Grant County, Kansas

Photographer: Arnold Thallheimer

Date: September 1993

Location of Negative: National Park Service, Omaha, Nebraska

Description/View: The Cimarron River bed in the vicinity of Lower Cimarron Spring. View looking east/southeast.



AWL USED FOR THE INDIAN TRADE

TENT PEG
Possibly Government Issue

WAGON PIN ?
PICKET PIN ?

HALF AN OX SHOE

PERCUSSION CAPS
not made after 1868

BALL EXTRACTOR

1827 dime found close to Wagonbed Springs. Donated by Edward Dowell.

BRACKETS FOR WAGON BOWS

POCKET COMPASS
Inscribed U.S.C.E.

MILITARY BUTTONS

SPANISH (?) SPUR ROWEL

TOOL USED WITH MUSKETS

OLD TIME TIN CAN TOPS
Removed with a knife

PART OF A MILITARY SPUR

PADLOCK THAT STILL WORKS WITH KEY BELOW

KNIFE BLADE

ORNAMENTAL PIECES OF A BIT, PROBABLY FROM THE SPANISH PERIOD

INDIAN ORNAMENT END

SALVE OR OINTMENT BOX

CHAIN LOCK

SANTA FE TRAIL ARTIFACTS
found in the Wagonbed Springs area.

DONOR: EDWARD DOWELL

LOWER CIMARRON SPRING
Grant County, Kansas
Santa Fe Trail artifacts collected by Edward Dowell
Photo by Arnold Thallheimer, 9/93



PHOTOGRAPH 8

Lower Cimarron Spring National Historic Landmark

Approximately 12 miles south of Ulysses, Grant County, Kansas

Photographer: Arnold Thalheimer

Date: September 1993

Location of Negative: National Park Service, Omaha, Nebraska

Description/View: Santa Fe Trail artifacts, which include rifle parts, metal arrowheads, and a crucifix, collected by Edward Dowell within the Lower Cimarron Spring National Historic Landmark.



LOWER CIMARRON SPRING
Grant County, Kansas
Aerial photo of historic location of spring
in bend of Cimarron River
Photo by James Walker, 9/93