

United States Department of the Interior  
National Park Service

NATIONAL REGISTER OF HISTORIC PLACES  
REGISTRATION FORM

1. Name of Property

historic name: Scatterville Cemetery

other name/site number: CY0041

2. Location

street & number: Approx. 1.5 mi. W. of AR Hwy. 90 on County Rd. 404

not for publication: N/A

city/town: Rector

vicinity: X

state: AR county: Clay code: AR 021 zip code: 72461

3. Classification

Ownership of Property: Private

Category of Property: Site

Number of Resources within Property:

Contributing	Noncontributing
<u>1</u>	<u>      </u> buildings
<u>      </u>	<u>      </u> sites
<u>      </u>	<u>      </u> structures
<u>      </u>	<u>      </u> objects
<u>1</u>	<u>0</u> Total

Number of contributing resources previously listed in the National Register: N/A

Name of related multiple property listing: N/A

=====

#### 4. State/Federal Agency Certification

=====

As the designated authority under the National Historic Preservation Act of 1986, as amended, I hereby certify that this X nomination \_\_\_\_\_ request for determination of eligibility meets the documentation standards for registering properties in the National Register of Historic Places and meets the procedural and professional requirements set forth in 36 CFR Part 60. In my opinion, the property X meets \_\_\_\_\_ does not meet the National Register Criteria. \_\_\_\_\_ See continuation sheet.

Cathryn A. Slater  
\_\_\_\_\_  
Signature of certifying official

2-9-95  
\_\_\_\_\_  
Date

\_\_\_\_\_  
Arkansas Historic Preservation Program  
State or Federal agency and bureau

In my opinion, the property \_\_\_\_\_ meets \_\_\_\_\_ does not meet the National Register criteria. \_\_\_\_\_ See continuation sheet.

\_\_\_\_\_  
Signature of commenting or other official

\_\_\_\_\_  
Date

\_\_\_\_\_  
State or Federal agency and bureau

=====

#### 5. National Park Service Certification

=====

I, hereby certify that this property is:

- ☒ entered in the National Register  
\_\_\_\_\_ See continuation sheet.  
☐ determined eligible for the  
National Register  
\_\_\_\_\_ See continuation sheet.  
☐ determined not eligible for the  
National Register  
☐ removed from the National Register  
\_\_\_\_\_ other (explain): \_\_\_\_\_

Edson H. Beall  
\_\_\_\_\_

3/31/95  
\_\_\_\_\_

Entered in the  
National Register

Boz

Signature of Keeper

Date  
of Action

=====

#### 6. Function or Use

=====

Historic: Funerary

Sub: Cemetery

Current : Funerary  
Not in Use

Sub: Cemetery

## Architectural Classification:

Other Description: N/A

Materials: foundation N/A roof N/A  
walls N/A other N/A

## 8. Statement of Significance

Certifying official has considered the significance of this property in relation to other properties: local.

Applicable National Register Criteria: A

Criteria Considerations (Exceptions):     D    

Areas of Significance: Exploration/Settlement

Period(s) of Significance: 1857-1931

Significant Dates: N/A

Significant Person(s): N/A

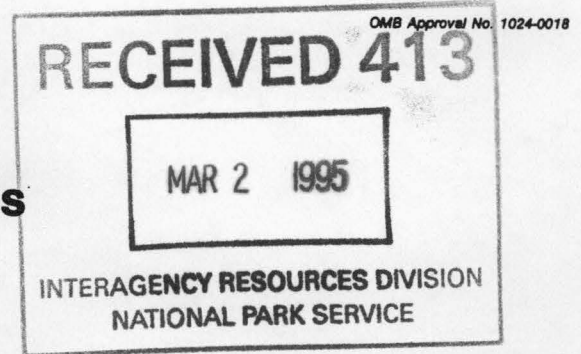
Cultural Affiliation: N/A

Architect/Builder: N/A

State significance of property, and justify criteria, criteria considerations, and areas and periods of significance noted above.  
X See continuation sheet.

United States Department of the Interior  
National Park Service

National Register of Historic Places  
Continuation Sheet



Section number 7 Page 1

---

### Summary

The Scatterville Cemetery is located northwest of Rector in Clay County. It is composed of fifty-two recorded burials, of which approximately thirty are marked. The burial dates range from 1857 to 1931 with the majority occurring in the 1870's.

### Elaboration

Located approximately two miles northwest of Rector in Clay County on County Road 404, the Scatterville Cemetery comprises roughly two acres and is set in an impressive stand of largely oak and hickory trees. The cemetery is surrounded on three sides by a barbed-wire fence of indeterminate age, and is further designated by a large cast-iron marker erected at the entrance by the Arkansas History Commission in 1973.

The cemetery contains approximately thirty gravestones with numerous depressions throughout. According to the Clay County Cemeteries "new book," fifty-two people are buried in the cemetery. The burial dates range from 1857 to 1931 with the majority occurring in the 1870's. There are four recorded burials in the 1860's, eighteen in the 1870's, seven in the 1880's, two in the 1890's, nine in the first decade of the twentieth century, and three between 1910 and 1931. The only nonhistoric component of the cemetery is a dedication marker of pink granite atop a concrete base that is inscribed "THE PRIVILEGE OF CARING FOR THIS FOREST SHRINE WAS ACCEPTED BY THE METHODIST YOUTH FELLOWSHIP OF RECTOR IN 1963. WE BEQUEATH ITS PERPETUAL CARE TO OUR SUCCESSORS."

Most of the markers are small, narrow marble slabs, many of which have fallen and/or possibly moved. The inscriptions on many gravestones have been obscured by age and the elements while others were never inscribed. There are a few styled markers, including two four-sided family monuments with obelisks belonging to the Allen and McNiel families. Both were damaged by vandals; the Allen monument has been repaired, while the McNiel obelisk is lying in two parts beside its base. Nearby, the largest gravestone in the cemetery, the square-based, shaft and capital monument to Nancy McNiel (1890), is in worse condition with its shaft lying on the ground and its capital broken into several pieces. There is also a multiple gravestone for three members of the Cook family. It is a tall rectangular monument with an upper sloped face featuring a sculpted open bible. Other interesting stones include H. W. Granade's 1870 horizontal cylindrical marker and Captain W. T. Morris's 1902 rectangular monument on base with an open bible and a knotted stole draped down one side.



**United States Department of the Interior**  
**National Park Service**

# **National Register of Historic Places**

## **Continuation Sheet**

Section number 7 Page 2

---

Although there is an unsubstantiated story regarding a grave in the southeast corner in which twenty Civil War soldiers are buried, there is no mention of slaves being buried here. It is known that some are buried at the nearby Mobley family cemetery.

United States Department of the Interior  
National Park Service

# National Register of Historic Places Continuation Sheet

Section number 8 Page 1

---

## Summary

The Scatterville Cemetery is being nominated under Criterion A with local significance as the only remaining link to the historic and antebellum community of Scatterville.

## Elaboration

Although a few people trickled into Clay County while Arkansas was still a territory, serious settlement did not begin until the 1830's. At that time, Clay County did not yet exist, and the western portion of the county was part of Randolph County while the eastern section belonged to Greene County. Earlier settlement of this region had been hindered by swamps on either side of Crowley's Ridge.

According to Robert T. Webb in his 1933 *History & Traditions of Clay County*, the first Clay County communities, defined by having five or six families settled in a five mile area, were Chalk Bluff, Oak Bluff, Scatterville, and a settlement near the present community of Peach Orchard. Webb notes that Scatterville received its name because:

. . . one man put a store at the foot of a hill, another put one at the peak, still another put one at the foot on the other side. The few stores and cabins were scattered about over the hills in a careless way.

The first families to locate in the Scatterville community were the McNiels, Allens, Copelands, Mobleys, Snowdens, Waddells, Nortens, Mitchells, Golbys, Whites, Bradshaws, Deans, Rayburns, Whitakers, and Simmons. They were mainly subsistence farmers; however, the Allen, Knight, Simmon, Bradshaw, McNiel, and Mobley families brought a few slaves with them when they emigrated from Kentucky and Tennessee. Cotton was grown during the antebellum period, but it was only used to make clothing for personal use. A gin in Scatterville eased this task somewhat by removing the seeds from the boll. After the war, cotton was raised as a cash crop. In 1855, the first horse-powered sawmill was brought to Scatterville, and a frame school building was erected in 1859. In that same year the town welcomed Major Rayburn's new steam-powered sawmill. Other industries in Scatterville included a tanyard for shoe making and a hand-powered sorghum mill.

Scatterville also owns the distinction as the scene of the first "battle" of the Civil War in Clay County. According to Webb, in 1860, "Little Bill" Johnson and Tom Holifield differed as to presidential merits of Abraham Lincoln and agreed to meet and fight it out, "fist and skull."

**United States Department of the Interior  
National Park Service**

**National Register of Historic Places  
Continuation Sheet**

Section number 8 Page 2

---

Apparently, Scatterville was a meeting place for many of these events, which were called pitched battles, and the preparations emulated dueling formalities. The fight ended when one admitted defeat or if the contest was too one-sided. The Holifield-Johnson battle is said to have ended with both men exhausted and unable to raise an arm. On a more serious note, actual Civil War skirmishes were fought in the Scatterville vicinity on August 3, 1862 and March 28, 1863.

Although information on Scatterville during and after the Civil War is scarce, it is known that the community remained stable until the arrival of the St. Louis and Texas Railroad about two miles to the south in 1881. The railroad company laid out a new town named Rector, and the population of Scatterville gradually migrated to the new and booming town.

As there are no known structures that are extant from that period in the Scatterville vicinity, the Scatterville Cemetery is locally significant under Criterion A as the best surviving link to this important early Clay County settlement which faded from view in the post-railroad era.

=====

## 9. Major Bibliographical References

=====

X See continuation sheet.

Previous documentation on file (NPS):

- ☐ preliminary determination of individual listing (36 CFR 67) has been requested.
- ☐ previously listed in the National Register
- ☐ previously determined eligible by the National Register
- ☐ designated a National Historic Landmark
- ☐ recorded by Historic American Buildings Survey # \_\_\_\_\_
- ☐ recorded by Historic American Engineering Record # \_\_\_\_\_

Primary Location of Additional Data:

- ☒ State historic preservation office
- ☐ Other state agency
- ☐ Federal agency
- ☐ Local government
- ☐ University
- ☐ Other -- Specify Repository: \_\_\_\_\_

=====

## 10. Geographical Data

=====

Acreage of Property: Approximately two

UTM References: Zone Easting Northing      Zone Easting Northing

A	<u>15</u>	<u>741280</u>	<u>4018390</u>	B	<u>15</u>	<u>741400</u>	<u>4018420</u>
C	<u>15</u>	<u>741400</u>	<u>4018340</u>	D	<u>15</u>	<u>741290</u>	<u>4018330</u>

Verbal Boundary Description: See continuation sheet.

The boundary of the nominated property is delineated by the USGS map, "Rector, Arkansas," and is a polygon whose vertices are marked by the above-referenced UTM coordinates.

Boundary Justification: See continuation sheet.

This boundary includes all of the property historically associated with this resource that retains its integrity.

=====

## 11. Form Prepared By

=====

Name/Title: Patrick Zollner, Architectural Historian

Organization: Arkansas Historic Preservation Program Date: February 9, 1995

Street & Number: 323 Center, 1600 Tower Bldg. Telephone: (501) 324-9880

City or Town: Little Rock State: AR ZIP: 72201



**United States Department of the Interior  
National Park Service**

**National Register of Historic Places  
Continuation Sheet**

Section number 9 Page 1

---

**Bibliography**

Dalton, O. L. "Old Scatteredville Cemetery Has Been Adopted." *Clay County Democrat*, August 8, 1963.

Dalton, O. L. "Scatteredville Cemetery Gravestones." *Clay County Democrat*, August 15, 1963.

Information submitted by Lea Harley, June 1994.

UNITED STATES DEPARTMENT OF THE INTERIOR  
NATIONAL PARK SERVICE

NATIONAL REGISTER OF HISTORIC PLACES  
EVALUATION/RETURN SHEET

REQUESTED ACTION: NOMINATION

PROPERTY Scatterville Cemetery  
NAME:

MULTIPLE  
NAME:

STATE & COUNTY: ARKANSAS, Clay

DATE RECEIVED: 3/02/95 DATE OF PENDING LIST: 3/14/95  
DATE OF 16TH DAY: 3/30/95 DATE OF 45TH DAY: 4/16/95  
DATE OF WEEKLY LIST:

REFERENCE NUMBER: 95000364

NOMINATOR: STATE

REASONS FOR REVIEW:

APPEAL: N DATA PROBLEM: N LANDSCAPE: N LESS THAN 50 YEARS: N  
OTHER: N PDIL: N PERIOD: N PROGRAM UNAPPROVED: N  
REQUEST: N SAMPLE: N SLR DRAFT: N NATIONAL: N

COMMENT WAIVER: N

☒ ACCEPT ☐ RETURN ☐ REJECT 3/31/95 DATE

Entered in the  
National Register

ABSTRACT/SUMMARY COMMENTS:

RECOM./CRITERIA \_\_\_\_\_

REVIEWER \_\_\_\_\_ DISCIPLINE \_\_\_\_\_

TELEPHONE \_\_\_\_\_ DATE \_\_\_\_\_

DOCUMENTATION see attached comments Y/N see attached SLR Y/N





## SCATTERVILLE

— . . . —

This early settlement, located on the military road which connected Chalk Bluff and Gainesville, is said to have acquired its name because stores and houses were "scattered about" over the area. Civil War skirmishes were fought here August 3, 1862 and March 28, 1863. The cemetery is the burial place of many of the pioneers of Clay County.

ARKANSAS HISTORY COMMISSION - CLAY COUNTY CENTENNIAL YEAR - 1913

Scatterville Cemetery  
Rector vic., Clay Co., Ark.  
Photo by K. Story

Oct. 1994

Neg. on file at AHP

View from the west  
of sign outside of cemetery  
entrance on south side  
of road.



GRINE FOWE

NANCY JANE W

Wife of

J. T. MEHARG

Born May 5, 1858

Died Mar. 8, 1902

Gone but not forgotten

Scatterville Cemetery  
Rector vic., Clay Co., Ark.  
Photo by K. Story  
Oct. 1994  
Neg. on file at AHPP  
View from the west





Scatterville Cemetery  
Rector vic., Clay Co., Ark.  
Photo by K. Story  
Oct. 1994  
Neg. on file at AHPP  
View from the north



LOUISA

Wife of  
THOMAS JOHNSON

BORN  
In Russell Co. Mo.

Oct. 25, 1849

DIED

In Clay Co. Mo.

Jan. 1, 1905

Carved and set by Geo. C.

N.S.

Scatterville Cemetery  
Rector vic., Clay Co., Ark.  
Photo by K. Story  
Oct. 1994  
Neg. on file at AHPP  
View from the west



WARD

THOMAS JEFFERSON

APR. 23, 1838

APR. 3, 1921

Scatterville Cemetery  
Rector vic, Clay Co., Ark.  
Photo by K. Story  
Oct. 1994  
Neg. on file at AHPP  
View from the east







Scatterville Cemetery  
Rector vic., Clay Co., Ark.  
Photo by K. Story  
Oct. 1994  
Neg. on file at AHPP  
View of brick-lined grave  
from the east





The pains of death are past  
Labor and sorrow cease,  
And life long suffering closed  
at last.  
His soul is found in peace.

Scatterville Cemetery  
Rector vic., Clay Co., Ark.  
Photo by R. Story  
Oct. 1994  
Neg. on file at AHPP  
View of headstone  
direction unknown



CLAUDE MARION  
SON OF  
S. E. & L. F.  
WISEMAN  
BORN  
Aug 24 1909  
DIED  
Mar 9 1970  
Aged 60 Mo 13 D

Interment  
in the  
St. Louis



Scattenville Cemetery  
Rector vic., Clay Co., Ark.

Photo by K. Story

Oct. 1994

Neg. on file at AHPP

Head stone - direction unknown





Scatterville Cemetery  
Rector vic., Clay Co., Ark.  
Photo by K. Stony  
Oct. 1994

Neg. on file at AHPP

View from the northeast  
just inside cemetery  
entrance





LILLIE MAY  
ALLEN  
BORN  
Jan. 22, 1871  
DIED  
Aug. 11, 1877

Scatterville Cemetery  
Rector vic., Clay Co., Ark.

Photo by K. Story

Oct. 1994

Neg. on file at AHPP

View of Allen family  
monument from the south





Scatterville Cemetery  
Rector vic, Clay Co., Ark.  
Photo by K. Story  
Oct. 1994  
Neg. on file at AHPP  
View from the south  
looking toward the road



GEO. W. CREWS  
1844-1874

HENRETTA C. CREWS  
WIFE  
1844-1902

CREWS

Scatterville Cemetery  
Rector vic., Clay Co., Ark.  
Photo by K. Story  
Oct. 1994  
Neg. on file at AHPP  
View of Crews headstone  
direction unknown






3-17-1823  
JUNE 26 1882

Scatterville Cemetery  
Rector vic., Clay Co., Ark.  
Photo by K. Story

Oct. 1994  
Neg. on file at AHAP

View of Capt. Morris  
headstone from the  
Southwest





MARY M  
WIFE OF  
G. W. C.  
COOK  
BORN  
OCT 2 1853  
DIED  
JUN 4 1901

WAS BORN  
IN NEW YORK  
AND DIED  
IN NEW YORK

Scatterville Cemetery

Rector vic., Clay Co., Ark.

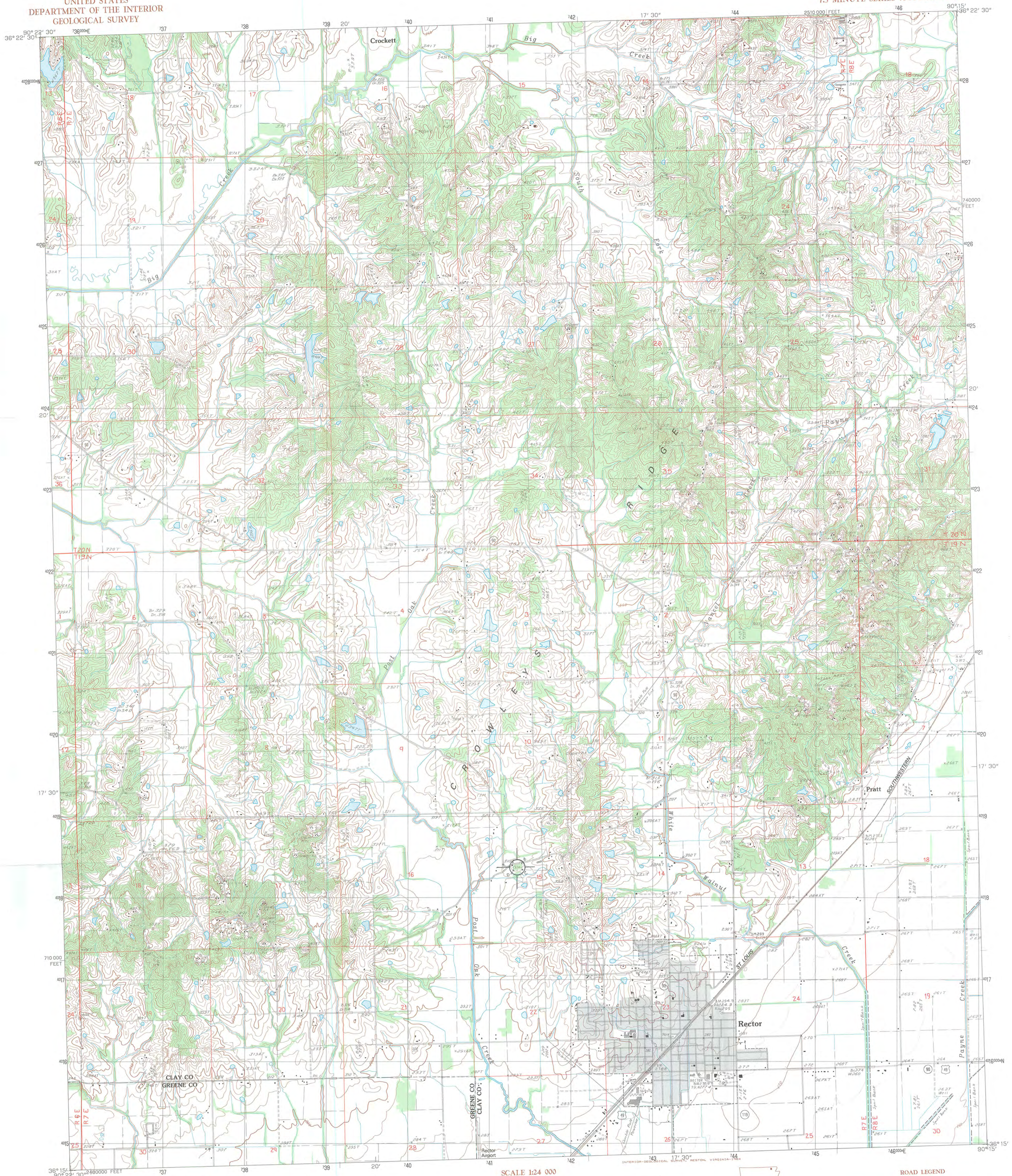
Photo by K. Story

Oct. 1994

Neg. on file at AHPP

View of Cook family  
gravestone from the north





PRODUCED BY THE UNITED STATES GEOLOGICAL SURVEY  
CONTROL BY: USGS AND NOS/NOAA  
1980 COMPILED FROM AERIAL PHOTOGRAPHS TAKEN  
FIELD CHECKED: 1982 MAP EDITED: 1984  
PROJECTION: LAMBERT CONFORMAL CONIC  
GRIDS: 1000-METER UNIVERSAL TRANSVERSE MERCATOR  
UTM GRID DECLINATION: 13° 30' EAST  
1983 MAGNETIC NORTH DECLINATION: 13° 30' EAST  
VERTICAL DATUM: NATIONAL GEODETIC VERTICAL DATUM OF 1929  
HORIZONTAL DATUM: 1927 NORTH AMERICAN DATUM  
To place on the predicted North American Datum of 1983,  
move the projection lines as shown by dashed corner ticks  
(5 meters south and 9 meters east)  
There may be private inholdings within the boundaries of any  
Federal and State Reservations shown on this map  
No distinction made between houses, barns, and other buildings  
Gray tint indicates area in which selected buildings are shown

PROVISIONAL MAP  
Produced from original  
manuscript drawings. Infor-  
mation shown as of date of  
photography.

SCALE 1:24 000  
CONTOUR INTERVAL 10 FEET  
SUPPLEMENTAL CONTOUR INTERVAL 5 FEET  
CONTROL ELEVATIONS SHOWN TO THE NEAREST 51 FOOT  
OTHER ELEVATIONS SHOWN TO THE NEAREST FOOT  
To convert feet to meters multiply by .3048  
To convert meters to feet multiply by 3.2808

THIS MAP COMPLIES WITH NATIONAL MAP ACCURACY STANDARDS  
FOR SALE BY U.S. GEOLOGICAL SURVEY, DENVER, COLORADO 80225, OR RESTON, VIRGINIA 22092  
AND THE ARKANSAS GEOLOGICAL COMMISSION, LITTLE ROCK, ARKANSAS 72204



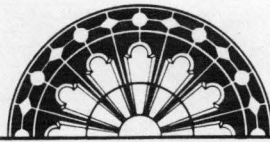
1	2	3	1
2	3	4	2
3	4	5	3
4	5	6	4
5	6	7	5
6	7	8	6
7	8		7
8			8

ROAD LEGEND  
Improved Road . . . . .  
Unimproved Road . . . . .  
Trail . . . . .  
Interstate Route U.S. Route State Route

RECTOR, ARKANSAS  
PROVISIONAL EDITION 1984

36090-C3-TF-024

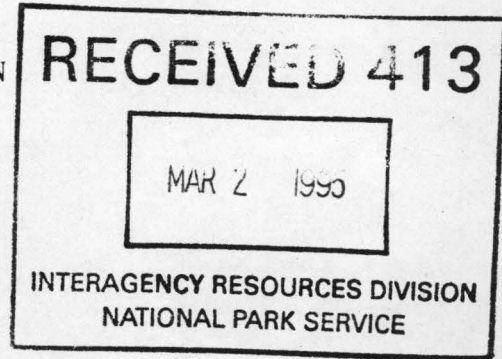




ARKANSAS  
HISTORIC  
PRESERVATION  
PROGRAM

February 10, 1995

Carol D. Shull  
Chief of Registration  
United State Department of the Interior  
National Register of Historic Places  
National Park Service  
800 North Capitol Street, Suite 250  
Washington, D.C. 20002



RE: Pioneer House  
Clarksville, Johnson County

✓ Scatterville Cemetery  
Rector, Clay County

Wilson Park Historic District  
Fayetteville, Washington County

Dear Carol:

We are enclosing for your review the nominations of the above referenced properties. The Arkansas Historic Preservation Program has complied with all applicable nominating procedures and notification requirements in the nomination process.

Thank you for your consideration in this matter.

Sincerely,

Cathy Buford Slater  
State Historic Preservation Officer

CBS:br

Enclosures

