



ROHWER RELOCATION CENTER

ROHWER, ARKANSAS

PHOTOGRAPHED BY K. STORY

MAY, 1990

NEGATIVE ON FILE AT AHPP

VIEW FROM NORTH

# 1



②  
Wm. T. Moore  
1874  
T. W. S.

ROHWER RELOCATION CENTER

ROHWER, ARKANSAS

PHOTOGRAPHED BY K. STORY

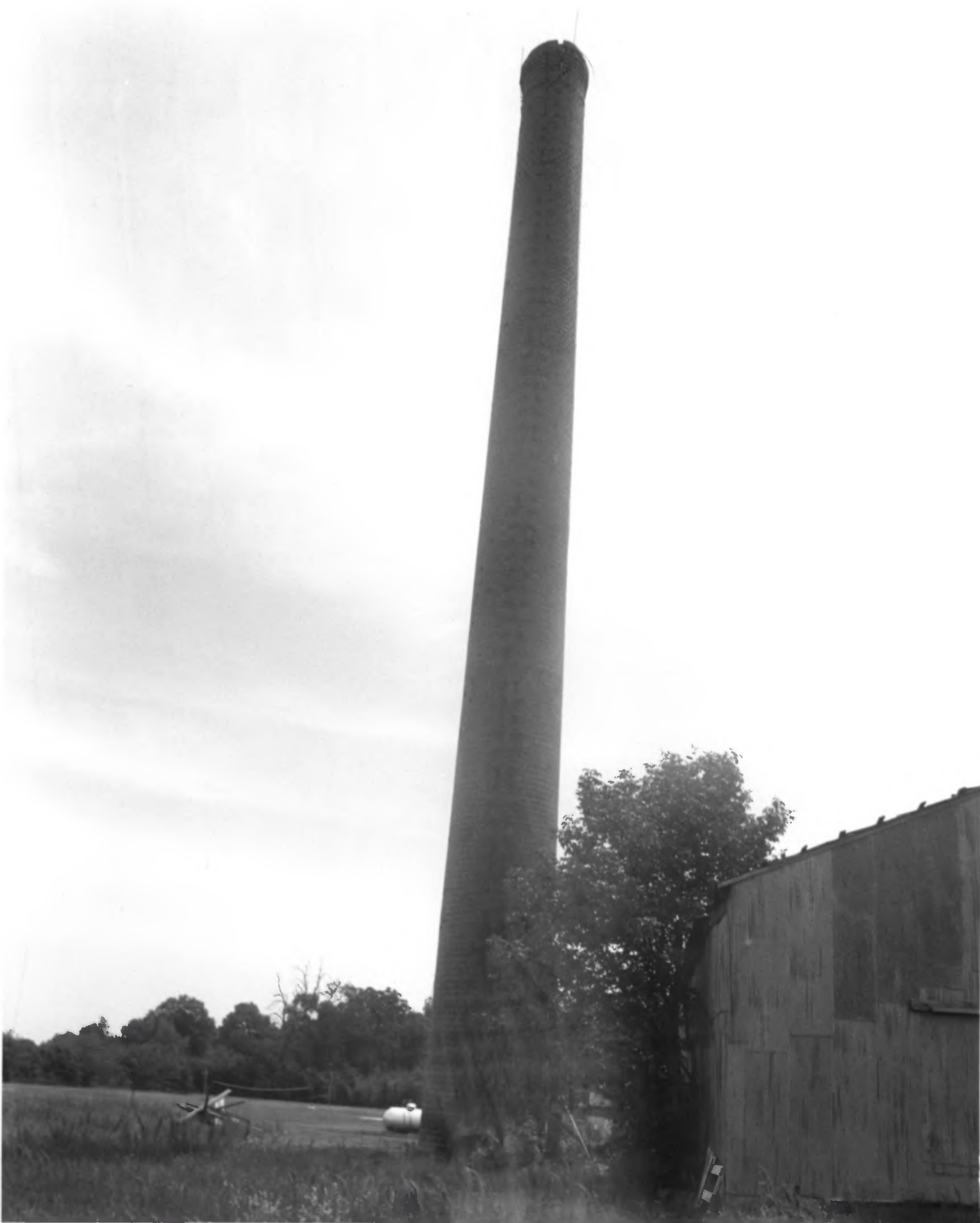
MAY, 1990

NEGATIVE ON FILE AT AHPP

VIEW FROM EAST

# 1





BOHNER RELOCATION CENTER

BOHNER, ARKANSAS

PHOTOGRAPHED BY H. STORY

MAY, 1990

NEGATIVE ON FILE AT AHPP

VIEW FROM WEST

# 1



BOHWER RELOCATION CENTER

BOHWER, ARKANSAS

PHOTOGRAPHED BY K. STORY

MAY, 1990

NEGATIVE ON FILE AT AHPP

VIEW FROM WEST

# 1



BOHNER RELOCATION CENTER  
BOHNER, ARKANSAS

PHOTOGRAPHED BY K. STORY  
MAY, 1990

NEGATIVE ON FILE AT AHPP  
VIEW FROM SOUTHWEST

# 1





ROHWER RELOCATION CENTER

ROHWER, ARKANSAS

PHOTOGRAPHED BY K. STORY

MAY, 1990

NEGATIVE ON FILE AT AHPP

SMOKESTACK DETAIL

# 1





ROHWER RELOCATION CENTER

ROHWER, ARKANSAS

PHOTOGRAPHED BY K. STORY

MAY, 1990

NEGATIVE ON FILE AT AHPP

VIEW FROM SOUTHWEST

#2





ROHWER RELOCATION CENTER

ROHWER, ARKANSAS

PHOTOGRAPHED BY K. STORY

MAY, 1990

NEGATIVE ON FILE AT AHPP

VIEW FROM NORTHWEST OF LAUNDRY BLDG.

#2





ROHWER RELOCATION CENTER

ROHWER, ARKANSAS

PHOTOGRAPHED BY K. STORY

MAY, 1990

NEGATIVE ON FILE AT AHPP

VIEW FROM SOUTHWEST OF LAUNDRY BLDG.

# 2



BOHNER RELOCATION CENTER

BOHNER, ARKANSAS

PHOTOGRAPHED BY K. STORY

MAY, 1990

NEGATIVE ON FILE AT AHPP

VIEW FROM NORTHEAST

#2





ROHWER RELOCATION CENTER

ROHWER, ARKANSAS

PHOTOGRAPHED BY K. STORY

MAY, 1990

NEGATIVE ON FILE AT AHPP

VIEW FROM THE NORTHWEST OF LAUNDRY BLDG.

#2





ROHWER RELOCATION CENTER

ROHWER, ARKANSAS

PHOTOGRAPHED BY K. STORY

MAY, 1990

NEGATIVE ON FILE AT AHPP

VIEW OF LAUNDRY BLDG. FROM

SOUTHEAST

#2



ROHWER RELOCATION CENTER

ROHWER, ARKANSAS

PHOTOGRAPHED BY K. STORY

MAY, 1990

NEGATIVE ON FILE AT AHPPD

VIEW OF INTERIOR WALL

#2





Handwritten symbols or graffiti at the top of the wall.

HORN  
KAREN  
Gloria

WESTLEY

181



ROHWER RELOCATION CENTER  
ROHWER, ARKANSAS  
PHOTOGRAPHED BY K. STORY  
MAY, 1990

NEGATIVE ON FILE AT AHPP  
VIEW ~~FROM~~ OF INTERIOR

#2





BOHWER RELOCATION CENTER

BOHWER, ARKANSAS

PHOTOGRAPHED BY K. STORY

MAY, 1980

NEGATIVE ON FILE AT ANPP

VIEW FROM WEST OF INTERIOR

#2



RONWER RELOCATION CENTER

RONWER, ARKANSAS

PHOTOGRAPHED BY K. STORY

APRIL, 1990

NEGATIVE ON FILE AT AHPP

VIEW FROM EAST

# 3





ROHWER RELOCATION CENTER  
ROHWER, ARKANSAS

PHOTOGRAPHED BY K. STORY

APRIL, 1990

NEGATIVE ON FILE AT AHPP  
FOUNDATION SLAB DETAIL

#5



ROHWER RELOCATION CENTER

ROHWER, ARKANSAS

PHOTOGRAPHED BY K. STORY

APRIL, 1990

NEGATIVE ON FILE AT AHPP

FOUNDATION DETAIL

# 5





ROHWER RELOCATION CENTER

ROHWER, ARKANSAS

PHOTOGRAPHED BY K. STORY

APRIL, 1990

NEGATIVE ON FILE AT AHPP

MESS HALL FOUNDATION DETAIL

# 5



ROHWER RELOCATION CENTER

ROHWER, ARKANSAS

PHOTOGRAPHED BY K. STORY

APRIL, 1990

NEGATIVE ON FILE AT AHPP

MESS HALL FOUNDATION DETAIL

# 5





ROHWER RELOCATION CENTER MEMORIAL CEMETERY  
Rohwer, Arkansas  
Soldier's Memorial from Northwest  
Photo by A. Albright, April 1990



IN MEMORY OF ALL SOLDIERS  
WHO SACRIFICED THEIR  
LIVES IN THE SERVICE  
OF THEIR COUNTRY. THEY  
FOUGHT FOR FREEDOM.  
THEY DIED THAT THE  
WORLD MIGHT HAVE  
PEACE.

EDWARD E. MULLER  
ASSISTANT  
PROJECT DIRECTOR

NOV 24 1945

100,442

ROHWER RELOCATION CENTER

ROHWER, ARKANSAS

PHOTOGRAPHED BY A. ALBRIGHT

APRIL, 1990

NEGATIVE ON FILE AT AHPP

VIEW FROM EAST OF VETERAN'S MONUMENT

# 6





ROHWER RELOCATION CENTER MEMORIAL CEMETERY

Rohwer, Arkansas

Detail of Base of Soldier's Memorial

Photo by A. Albright, April 1990



WHO SACRIFICED THEIR  
LIVES IN THE SERVICE  
OF THEIR COUNTRY. THEY  
FOUGHT FOR FREEDOM,  
THEY DIED THAT THE  
WORLD MIGHT HAVE  
PEACE

EDWARD B. MOULTON  
ASSISTANT  
PROJECT DIRECTOR

OCT 20 1945

ROHWER RELOCATION CENTER  
ROHWER, ARKANSAS

PHOTOGRAPHED BY A. ALBRIGHT  
APRIL, 1990

NEGATIVE ON FILE AT AHPP  
DETAIL OR SCRIPT

#6



ROHWER RELOCATION CENTER MEMORIAL CEMETERY  
Rohwer, Arkansas  
Evacuee's Memorial  
Photo by K. Story, May 1990





淨信久遠慰靈碑

1964





BOHWER RELOCATION CENTER

BOHWER, ARKANSAS

PHOTOGRAPHED BY A. ALBRIGHT

APRIL, 1990

NEGATIVE ON FILE AT AHPP

VIEW FROM WEST OF VETERAN'S  
MONUMENT

# 7



ROHWER RELOCATION CENTER

ROHWER, ARKANSAS

PHOTOGRAPHED BY A. ALBRIGHT

APRIL, 1990

NEGATIVE ON FILE AT AHPP

VIEW FROM EAST OF EVACUEE'S

MONUMENT

# 7



ROHWER RELOCATION CENTER MEMORIAL CEMETERY

Rohwer, Arkansas

Detail of Eagleon Evacuee's Memorial

Photo by A. Albright, April 1990





時是昭和十九年歲在甲申八月此碑之建立  
 地下眠火和民族之精靈對久遠之冥  
 福祿鳴呼悲哉 無廟和收容所 所民同

ERECTED BY THE  
 INHABITANTS OF RO  
 HWER RELOCATION  
 CENTER

BOHNER RELOCATION CENTER  
BOHNER, ARKANSAS  
PHOTOGRAPHED BY A. ALBRIGHT  
APRIL, 1980

NEGATIVE ON FILE AT ANPP  
DETAIL OF SCRIPT

# 7

薄信久遠感靈生



ROHWER  
RELOCATION  
CENTER  
PROJECT  
DIRECTOR  
RAY D  
JOHNSTON  
AND  
JOSEPH  
B HUNTER

BOHNER RELOCATION CENTER

BOHNER, ARKANSAS

PHOTOGRAPHED BY A. ALBRIGHT

APRIL, 1990

NEGATIVE ON FILE AT ANPP

DETAIL OF INSCRIPTIONS

#7





ERECTED BY THE  
INHABITANTS OF RO  
HWER RELOCATION  
CENTER  
OCTOBER 1944

ROHWER RELOCATION CENTER MEMORIAL CEME.  
Rohwer, Arkansas  
Detail of Evacuee's Memorial  
Photo by A. Albright, April 1990



TO HIM WHO SLEEPS  
ETERNALLY HERE  
A DESCENDANT OF  
GLORIOUS YAMATO  
WHO CAME IN HIS  
PRIME WITH HOPES  
AND AMBITION'S  
HEROIC TO BATTLE  
THE FORTUNES OF  
LIFE PEACE AND  
BLISS BE YOURS

1944

BOHWER RELOCATION CENTER

BOHWER, ARKANSAS

PHOTOGRAPHED BY A. ALBRIGHT

APRIL, 1990

NEGATIVE ON FILE AT ANPP

VIEW FROM WEST

#7



ROHWER RELOCATION CENTER MEMORIAL CEMETERY

Rohwer, Arkansas

Close-up of base of Evacuee's Memorial

Photo by A. Albright, April 1990





BOHWER RELOCATION CENTER

BOHWER, ARKANSAS

PHOTOGRAPHED BY A. ALBRIGHT

APRIL, 1990

NEGATIVE ON FILE AT AHPP

VIEW FROM NORTH

# 7



BOMWER RELOCATION CENTER

BOMWER, ARKANSAS

PHOTOGRAPHED BY A. ALBRIGHT

APRIL, 1990

NEGATIVE ON FILE AT AHPP

VIEW OF CEMETERY FROM WEST





ROHWER RELOCATION CENTER  
ROHWER, ARKANSAS  
PHOTOGRAPHED BY K. STORY  
MAY, 1990

NEGATIVE ON FILE AT AHPP  
VIEW FROM SOUTH OF NON-CONTRIBUTING  
STRUCTURES ADJACENT TO SCHOOL  
(REPRESENTATIVE STREETScape)

1904  
CENTRAL  
MILITARY  
HOSPITAL

RONWER RELOCATION CENTER

RONWER, ARKANSAS

PHOTOGRAPHED BY A. ALBRIGHT

APRIL, 1990

NEGATIVE ON FILE AT AHPP

ENTRANCE MARKER DETAIL





ROHWER RELOCATION CENTER

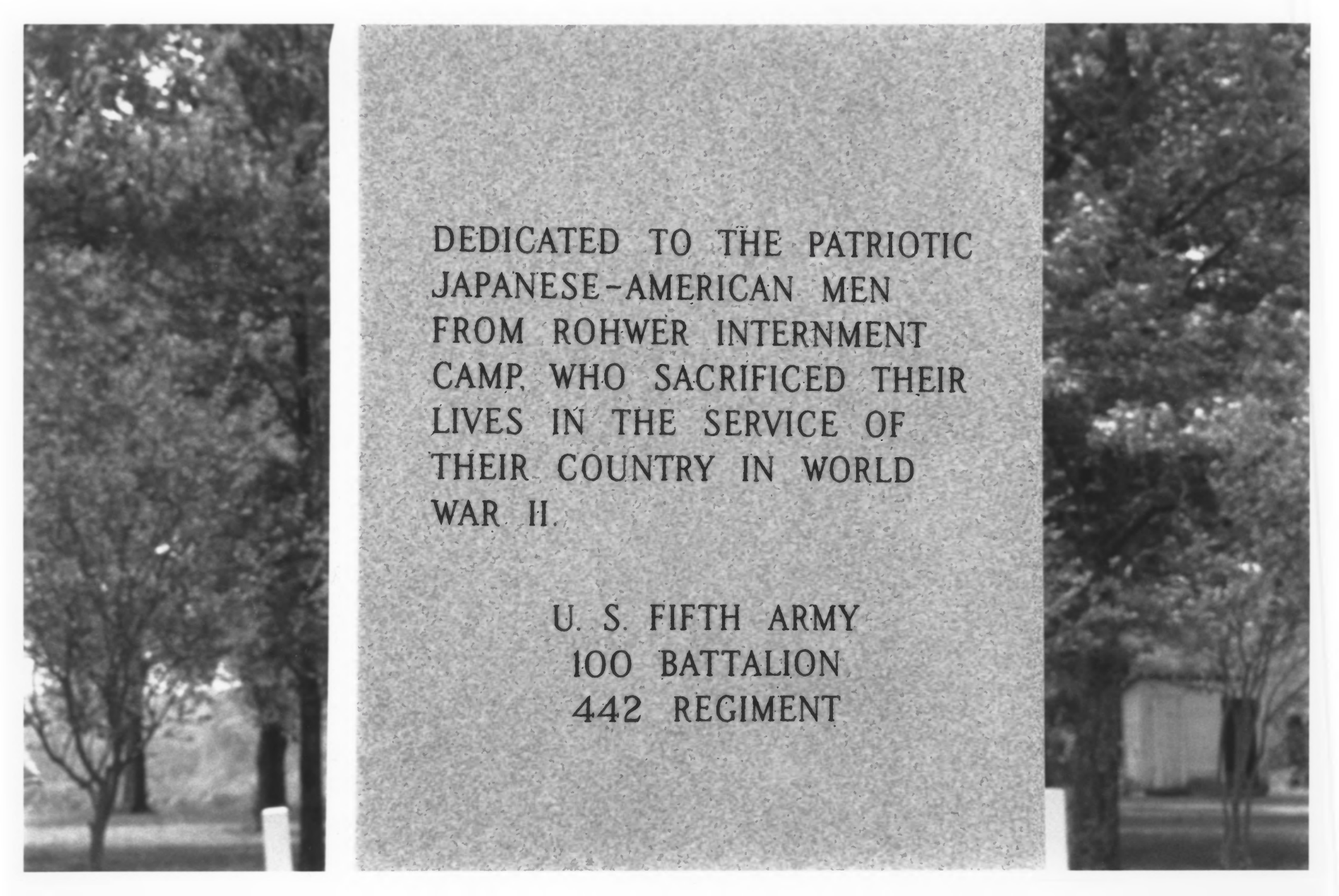
ROHWER, ARKANSAS

PHOTOGRAPHED BY A. ALBRIGHT

APRIL, 1980

NEGATIVE ON FILE AT AHPP

DETAIL OF WALKWAYS



DEDICATED TO THE PATRIOTIC  
JAPANESE-AMERICAN MEN  
FROM ROHWER INTERNMENT  
CAMP, WHO SACRIFICED THEIR  
LIVES IN THE SERVICE OF  
THEIR COUNTRY IN WORLD  
WAR II.

U. S. FIFTH ARMY  
100 BATTALION  
442 REGIMENT

ROHWER RELOCATION CENTER

ROHWER, ARKANSAS

PHOTOGRAPHED BY A. ALBRIGHT

APRIL, 1980.

NEGATIVE ON FILE AT AHPP

VIEW FROM EAST OF NON-CONTRIBUTING  
MONUMENT





POHWER RELOCATION CENTER

POHWER, ARKANSAS

PHOTOGRAPHED BY K. STORY

MAY, 1990

NEGATIVE ON FILE AT AHPP

VIEW FROM SOUTHEAST OF MAIN  
HIGH SCHOOL BLDG.

280/09

GENERAL LAYOUT  
ROMBERG RELOCATION CENTER

NOTE

NO.	DESCRIPTION	AREA	REMARKS
1			
2			
3			
4			
5			
6			
7			
8			
9			
10			
11			
12			
13			
14			
15			
16			
17			
18			
19			
20			
21			
22			
23			
24			
25			
26			
27			
28			
29			
30			
31			
32			
33			
34			
35			
36			
37			
38			
39			
40			
41			
42			
43			
44			
45			
46			
47			
48			
49			
50			
51			
52			
53			
54			
55			
56			
57			
58			
59			
60			
61			
62			
63			
64			
65			
66			
67			
68			
69			
70			
71			
72			
73			
74			
75			
76			
77			
78			
79			
80			
81			
82			
83			
84			
85			
86			
87			
88			
89			
90			
91			
92			
93			
94			
95			
96			
97			
98			
99			
100			



SECTION NO. 1

ROHWER RELOCATION CENTER

ROHWER, ARKANSAS

PHOTOGRAPHED BY K. STORY

APRIL, 1990

NEGATIVE ON FILE AT AHPP

ORIGINAL PLAN FOR ROHWER CENTER





POHWER RELOCATION CENTER

POHWER, ARKANSAS

PHOTOGRAPHED BY K. STORY

NEGATIVE ON FILE AT AHPP

APRIL, 1990

ORIGINAL CAMP PLAN; DETAIL OF

VICINITY MAP



BOHWER RELOCATION CENTER

ROHWER, ARKANSAS

PHOTOGRAPHED BY K. STORY

MAY, 1990

NEGATIVE ON FILE AT AHPP

VIEW FROM NORTHWEST OF DELTA  
HIGH SCHOOL COMPLEX





ROWER RELOCATION CENTER

ROWER, ARKANSAS

PHOTOGRAPHED BY K. STORY

MAY, 1990

NEGATIVE ON FILE AT AHPP

VIEW OF DELTA HIGH SCHOOL

ATHLETIC FIELD FROM NORTH



## LOYALTY

### JAPANESE-AMERICAN CREED

I AM AN AMERICAN OF JAPANESE ANCESTRY AND APPRECIATE THE ADVANTAGES OF OUR NATION. I GLORY IN HER HERITAGE; I TRUST IN HER FUTURE. WE ARE GRANTED LIBERTIES AND OPPORTUNITIES GREATER THAN ANYWHERE IN THE WORLD. WE ARE ENTRUSTED WITH THE RESPONSIBILITIES OF THE FRANCHISE; PERMITTED TO BUILD A HOME; TO EARN A LIVELIHOOD. TO WORSHIP, THINK, SPEAK AND ACT AS WE PLEASE-- AS A FREE MAN.

AFTER PEARL HARBOR, A WAVE OF HYSTERIA SWEEPED THE COUNTRY AND NEARLY 112,000 JAPANESE-AMERICAN CITIZENS CAME UNDER SUSPICION AS TO THEIR LOYALTY TO THE UNITED STATES. AS A RESULT, PRESIDENT FRANKLIN D. ROOSEVELT ESTABLISHED THE WAR RELOCATION AUTHORITY BY EXECUTIVE ORDER NO. 9066 ON MAY 18, 1942, WITH THE POWER TO RELOCATE AND INTERN THOSE PEOPLE OF JAPANESE ANCESTRY RESIDING ON THE WEST COAST OF THE UNITED STATES.

UNDER THE AUSPICES OF THE WAR RELOCATION AUTHORITY, THE ROHWER RELOCATION CENTER WAS ESTABLISHED ON SEPTEMBER 18, 1942. THE FIRST OF SOME 8,500 JAPANESE-AMERICANS ARRIVED AT ROHWER FOR INTERNMENT ON THAT DATE.

IN FEBRUARY, 1943, THE U. S. ARMY ESTABLISHED THE FAMED 100TH BATTALION AND THE 442ND REGIMENTAL COMBAT TEAM, AN ALL NISEI UNIT. THIS UNIT SERVED WITH GREAT VALOR AND DISTINGUISHED ITSELF IN THE EUROPEAN THEATRE. IRONICALLY, THE FAMILIES OF THIS UNIT REMAINED INTERNED.

WE ARE PROUD TO REMEMBER THAT THE 100TH BATTALION AND THE 442ND REGIMENT WERE THE MOST HIGHLY DECORATED OF ALL UNITS DURING WWII. THE MOST COURAGEOUS AND NOTABLE BATTLES FOUGHT BY THE UNITS INCLUDED THOSE AT SALERNO, ANZIO AND CASSINO, AS WELL AS THE RESCUE OF THE TEXAS "LOST BATTALION".

IT SHOULD BE REMEMBERED THAT DURING THE INTERNMENT YEARS, THOUSANDS OF JAPANESE-AMERICANS VOLUNTEERED OR WERE DRAFTED TO SERVE IN MILITARY INTELLIGENCE OPERATIONS IN THE PACIFIC WAR WITH JAPAN. THREE DECADES FOLLOWING THE END OF WWII INFORMATION WAS FINALLY MADE PUBLIC WHICH DESCRIBED THE VALOR AND COURAGE EXHIBITED BY THESE INDIVIDUALS AND THEIR SECRET CONTRIBUTIONS TO THE PACIFIC VICTORY.

AT THE END OF WWII, ON NOVEMBER 30, 1945, THE LAST JAPANESE-AMERICAN LEFT ROHWER, ENDING 34 YEARS OF INTERNMENT.

THIS MEMORIAL IS ALSO DEDICATED TO THE MEMORY OF THE MANY JAPANESE-AMERICANS FROM ROHWER THAT GAVE THEIR LIVES THAT OTHERS MIGHT ENJOY THE FREEDOMS WHICH THEY AND THEIR FAMILIES WERE DENIED.

ROHWER RELOCATION CENTER

ROHWER, ARKANSAS

PHOTOGRAPHED BY A. ALBRIGHT

APRIL, 1990

NEGATIVE ON FILE AT AHPP

VIEW FROM WEST OF

NON-CONTRIBUTING MONUMENT





COURAGE



DEDICATED TO THE PATRIOTIC  
JAPANESE-AMERICAN MEN  
FROM ROHWER INTERNMENT  
CAMP WHO SACRIFICED THEIR  
LIVES IN THE SERVICE OF  
THEIR COUNTRY IN WORLD  
WAR II.

U. S. FIFTH ARMY  
100 BATTALION  
442 REGIMENT

CASSINO



ANZIO

ROHWER RELOCATION CENTER

ROHWER, ARKANSAS

PHOTOGRAPHED BY A. ALBRIGHT

APRIL, 1980

NEGATIVE ON FILE AT AHPP

VIEW FROM EAST OF NON-CONTRIBUTING  
MONUMENT



RONWER RELOCATION CENTER

RONWER, ARKANSAS

PHOTOGRAPHED BY K. STORY

MAY, 1990

NEGATIVE ON FILE AT AHPP

VIEW OF DELTA HIGH SCHOOL

GYMNASIUM FROM NORTHEAST





ROHWER RELOCATION CENTER

ROHWER, ARKANSAS

PHOTOGRAPHED BY K. STORY

MAY, 1990

NEGATIVE ON FILE AT AHPP

VIEW FROM NORTH OF NON-

CONTRIBUTING RESIDENCES AT

SOUTHERN END OF SCHOOL SITE

SECTION 24

5  
1  
62

1	WATER PUMPING STATION	15' x 15'	A-100
2	WELL HOUSE	12' x 12'	A-100
<b>WATCH TOWERS</b>			
3	WATCH TOWER	12' x 12'	A-100
4	COAL STORAGE	12' x 12'	R-100

**NOTE:**

COPY OF RECORD DRAWING NO. L-1.

605

**ROAD NOTES:**

- INDICATIONS:
- 1. SURFACE TREATMENT  
ALSO PAVING & CURB AREA.
- 2. SURFACE TREATMENT  
ALSO PAVING.
- 3. GRAVEL ROAD.
- ROADS NOT IDENTIFIED  
TO BE DIRT ROADS.

SYMBOL NUMBER	POSITION MATCHED
1	INDICATED
2	NOT INDICATED

**BUILDING SYMBOLS**

**ROHWER RELOCATION CENTER**  
DESHA COUNTY, ARKANSAS

**GENERAL LAYOUT**

IN 1 SHEET

SHEET NO. 1

SCALE 1" = 200'

D.S. ENGINEER OFFICE - EXHIBIT M-10

NEILD, BOMDAL AND NEILD  
ARCHITECT - ENGINEERS  
MEMPHIS, ARKANSAS &  
SHREVEPORT, LOUISIANA

SUBMITTED

*C. S. ...*  
ARCHITECT - ENGINEER

SERIAL 4508  
**288/109**



ROHWER RELOCATION CENTER

ROHWER, ARKANSAS

PHOTOGRAPHED BY K. STORY

MAY, 1990

NEGATIVE ON FILE AT AHPP

DETAIL OF TITLE BLOCK,

ORIGINAL CENTER PLAN





ROHWER RELOCATION CENTER MEMORIAL CEMETERY

Rohwer, Arkansas

Memorial Cemetery from North

Photo by A. Albright, April 1990



ROHWER RELOCATION CENTER MEMORIAL CEMETERY  
Rohwer, Arkansas  
Christian Gravestone  
Photo by A. Albright, April 1990





ROHWER RELOCATION CENTER MEMORIAL CEMETERY

Rohwer, Arkansas

Buddist or Shinto Gravestone

Photo by A. Albright, April 1990





ROHWER RELOCATION CENTER  
ROHWER, ARKANSAS

PHOTOGRAPHED BY K. STORY  
MAY, 1990

NEGATIVE ON FILE AT AHPP

VIEW OF DELTA HIGH SCHOOL

SHOP BLDG. FROM NORTH (NON-CONTRIBUTING)



ROHWER RELOCATION CENTER

ROHWER, ARKANSAS

PHOTOGRAPHED BY K. STORY

MAY, 1990

NEGATIVE ON FILE AT AHPP

VIEW LOOKING EAST OF

REPRESENTATIVE NON-CONTRIBUTING  
RESIDENCES