



1. PG&E General Office Building and Annex
2. San Francisco County, California
3. unknown
4. 1925
5. PG&E
77 Beale Street, Room 2901
San Francisco, CA 94106
6. PG&E and Matson buildings, looking southeast
7. No. 1



1. PG&E General Office Building and Annex

2. San Francisco County, California

3. Henri Van Wandelen

4. 1956

5. copy negative at Page & Turnbull, Inc.
724 Pine Street
San Francisco, CA 94108

6. Aerial photograph showing urban context, looking southwest

7. No. 2



·PACIFIC·GAS·
AND·ELECTRIC
·COMPANY·

1. PG&E General Office Building and Annex
2. San Francisco County, California
3. unknown
4. 1925
5. PG&E
77 Beale Street
San Francisco, CA 94108
6. Market Street entrance, General Office Building
7. No. 3



1. PG&E General Office Building and Annex
2. San Francisco County, California
3. UNKNOWN
4. 1925
5. PG&E
77 Beale Street Room 2901
San Francisco, CA 94106
6. General Office building floodlit at night, looking southeast
7. No. 4



STOCK TRANSFER
BOND REGISTRATION

BUILDING DIRECTORY

DEPARTMENTS	DEPARTMENTS
STOCK SALES DEPARTMENT	STOCK SALES DEPARTMENT
BOND REGISTRATION	BOND REGISTRATION
STOCK TRANSFER	STOCK TRANSFER
...	...

STOCK SALES DEPARTMENT
ROOM 530

1. PG&E General Office Building and Annex
2. San Francisco County, California
3. Gamma Photographic Labs (copy negative)
4. 1925
5. Copy negative at Page & Turnbull, Inc.
724 Pine Street
San Francisco, CA 94108
Shot from The American Architect, v. CXXVII, (Nov. 20, 1925)
6. Ground Floor Lobby, General Office Building, looking southeast
7. No. 5



1. PG&E General Office Building and Annex

2. San Francisco County, California

3. Gamma Photographic Labs (copy negative)

4. 1925

5. Copy negative at Page & Turnbull, Inc.

724 Pine Street

San Francisco, CA 94108

Shot from The American Architect, v. CXXVII (Nov. 20, 1925)

6. 14th Floor Board Room, General Office Building

7. No. 6



1. P O & E General Office Building and Annex
2. San Francisco County, California
3. Gamma Photographic Labs (copy negative)

4. 1925

5. Copy negative at Page & Turnbull, Inc.

724 Pine Street
San Francisco, CA 94108

Shot from The American Architect, v. CXXVII (Nov. 20, 1925)

6. 14th Floor Elevator Lobby and Executive Corridor,
General Office Building

7. No. 7



1. PG&E General Office Building and Annex

2. San Francisco County, California

3. Gamma Photographic Labs (copy negative)

4. 1925

5. Copy negative at Page & Turnbull, Inc.

724 Pine Street
San Francisco, CA 94108

shot from The American Architect, V. CXXVII (Nov. 20, 1925)

6. First Floor Stock Transfer Office, General Office Building

7. No. 8



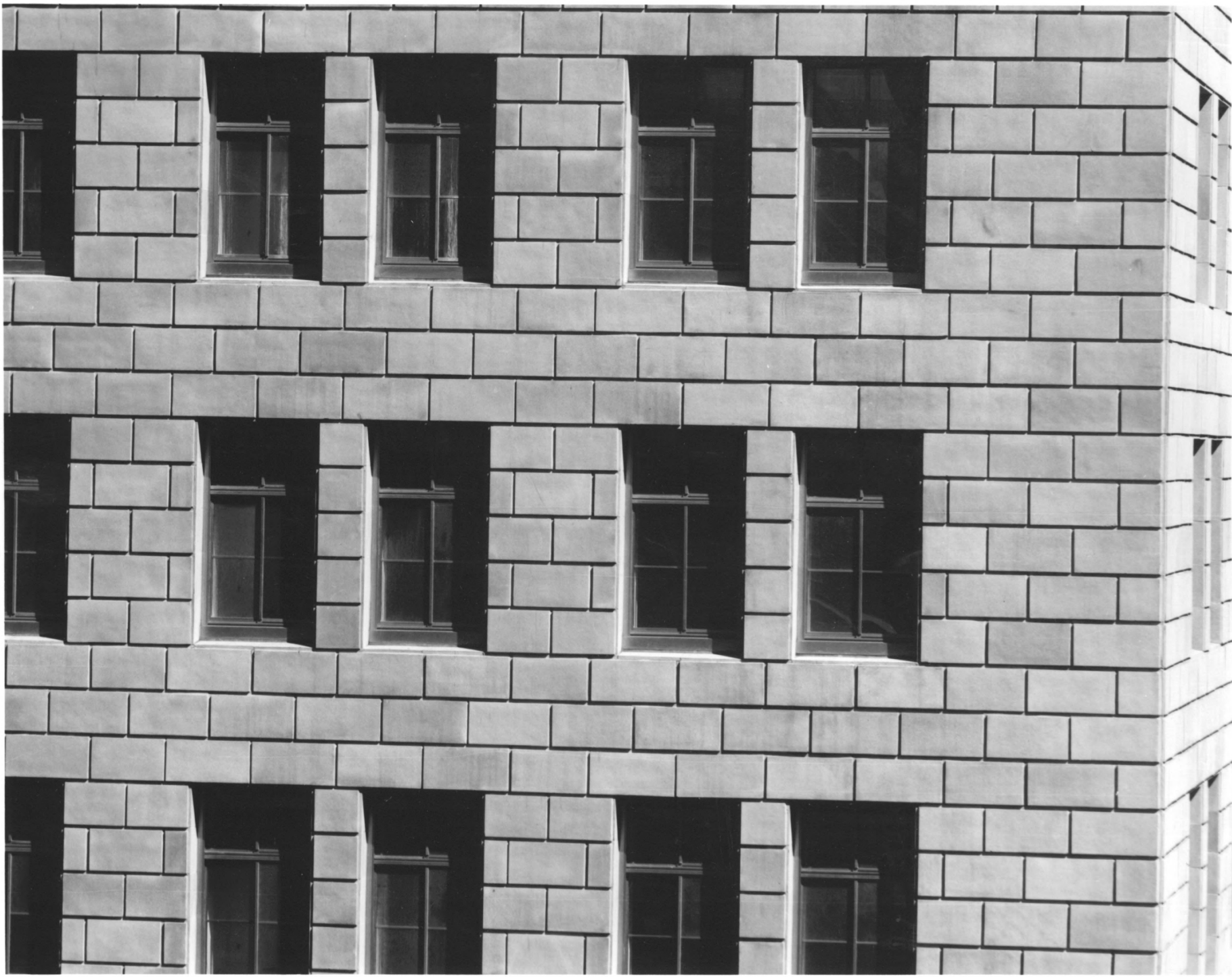
1. PGE General Office Building and Annex
2. San Francisco County, California
3. Unknown
4. August 22, 1947
5. San Francisco Public Library
6. Construction photograph, PGE Annex, looking north
7. No. 9



1. PG&E GENERAL OFFICE BUILDING & ANNEX
2. SAN FRANCISCO COUNTY, CA
3. WILLIAM A. PORTER
4. 1995
5. WILLIAM A. PORTER, SAN FRANCISCO
6. ENSEMBLE OF PG&E & MATSON BUILDINGS,
LOOKING SOUTHEAST
7. NO. 10



1. PG&E GENERAL OFFICE BUILDING & ANNEX
2. SAN FRANCISCO COUNTY, CA
3. WILLIAM A. PORTER
4. 1995
5. WILLIAM A. PORTER, SAN FRANCISCO
6. COURTYARD, GENERAL OFFICE BUILDING, LOOKING NORTH
7. No. 11



1. PG&E GENERAL OFFICE BUILDING & ANNEX
2. SAN FRANCISCO COUNTY, CA
3. WILLIAM A. PORTER
4. 1995
5. WILLIAM A. PORTER, SAN FRANCISCO
6. RELIEVING JOINTS AT EXTERIOR TERRA COTTA
7. NO. 12



PACIFIC GAS AND
ELECTRIC COMPANY

1. POSE GENERAL OFFICE BUILDING & ANNEX

2. SAN FRANCISCO COUNTY, CALIFORNIA

3. WILLIAM A. PORTER

4. 1995

5. WILLIAM A. PORTER, SAN FRANCISCO

6. GROUND FLOOR LOBBY GENERAL OFFICE
BUILDING, LOOKING SOUTHEAST & SHOWING ALTERATIONS

7. NO. 13



1. PG&E GENERAL OFFICE BUILDING & ANNEX

2. SAN FRANCISCO COUNTY, CALIFORNIA

3. WILLIAM A. PORTER

4. 1995

5. WILLIAM A. PORTER, SAN FRANCISCO

6. GROUND FLOOR LOBBY, PG&E ANNEX, LOOKING WEST

7. No. 14



1. 1966 GENERAL OFFICE BUILDING & ANNEX

2. SAN FRANCISCO COUNTY, CALIFORNIA

3. WILLIAM A. PORTER

4. 1995

5. WILLIAM A. PORTER, SAN FRANCISCO

6. 14TH FLOOR BOARD ROOM, GENERAL OFFICE BUILDING,
SHOWING ALTERATIONS

7. No. 15



1. POSE GENERAL OFFICE BUILDING & ANNEX
2. SAN FRANCISCO COUNTY, CALIFORNIA
3. WILLIAM A. PORTER
4. 1995
5. WILLIAM A. PORTER, SAN FRANCISCO
6. 14th FLOOR DEPARTMENTAL HEAD OFFICE,
GENERAL OFFICE BUILDING
7. NO. 16