

# National Register of Historic Places Registration Form

FEB 19 1993

This form is for use in nominating or requesting determinations for individual properties and districts. See instructions in *How to Complete the National Register of Historic Places Registration Form* (National Register Bulletin 16A). Complete each item by marking "x" in the appropriate box or by entering the information requested. If an item does not apply to the property being documented, enter "N/A" for "not applicable." For functions, architectural classification, materials, and areas of significance, enter only categories and subcategories from the instructions. Place additional entries and narrative items on continuation sheets (NPS Form 10-900a). Use a typewriter, word processor, or computer, to complete all items.

## 1. Name of Property

historic name The Lincoln Highway: Buttrick's Creek to Grand Junction Segment

other names/site number County Road E53

## 2. Location

street & number West of Grand Junction  not for publication

city or town Grand Junction  vicinity

state Iowa code IA county Greene code 073 zip code 50107

## 3. State/Federal Agency Certification

As the designated authority under the National Historic Preservation Act, as amended, I hereby certify that this  nomination  request for determination of eligibility meets the documentation standards for registering properties in the National Register of Historic Places and meets the procedural and professional requirements set forth in 36 CFR Part 60. In my opinion, the property  meets  does not meet the National Register criteria. I recommend that this property be considered significant  nationally  statewide  locally. ( See continuation sheet for additional comments.)

[Signature]  
Signature of certifying official/Title

1/25/93  
Date

State Historical Society of Iowa  
State of Federal agency and bureau

In my opinion, the property  meets  does not meet the National Register criteria. ( See continuation sheet for additional comments.)

\_\_\_\_\_  
Signature of certifying official/Title

\_\_\_\_\_  
Date

\_\_\_\_\_  
State or Federal agency and bureau

## 4. National Park Service Certification

I hereby certify that the property is:

Signature of the Keeper

Date of Action

entered in the National Register.  
 See continuation sheet.

Beth Boland

3/29/93

determined eligible for the National Register  
 See continuation sheet.

determined not eligible for the National Register.

removed from the National Register.

other, (explain): \_\_\_\_\_

5. Classification

Ownership of Property

(Check as many boxes as apply)

- private
- public-local
- public-State
- public-Federal

Category of Property

(Check only one box)

- building(s)
- district
- site
- structure
- object

Number of Resources within Property

(Do not include previously listed resources in the count.)

Contributing	Noncontributing	
_____	_____	buildings
_____	_____	sites
6	1	structures
_____	_____	objects
6	1	Total

Name of related multiple property listing

(Enter "N/A" if property is not part of a multiple property listing.)

The Lincoln Highway in Greene County, Iowa

Number of contributing resources previously listed in the National Register

0

6. Function or Use

Historic Functions

(Enter categories from instructions)

Transportation/highway

Current Functions

(Enter categories from instructions)

Transportation/highway

7. Description

Architectural Classification

(Enter categories from instructions)

Other/Lincoln Highway

Materials

(Enter categories from instructions)

foundation n/a

walls n/a

roof n/a

other concrete; asphalt

Narrative Description

(Describe the historic and current condition of the property on one or more continuation sheets.)

8. Statement of Significance

Applicable National Register Criteria

(Mark "x" in one or more boxes for the criteria qualifying the property for National Register listing.)

- A Property is associated with events that have made a significant contribution to the broad patterns of our history.
- B Property is associated with the lives of persons significant in our past.
- C Property embodies the distinctive characteristics of a type, period, or method of construction or represents the work of a master, or possesses high artistic values, or represents a significant and distinguishable entity whose components lack individual distinction.
- D Property has yielded, or is likely to yield, information important in prehistory or history.

Areas of Significance

(Enter categories from instructions)

Transportation

Period of Significance

1913-1928

Significant Dates

1924

Significant Person

(Complete if Criterion B is marked above)

n/a

Cultural Affiliation

n/a

Architect/Builder

Iowa Highway Commission; Empire Construction Co. (Des Moines)

Criteria Considerations

(Mark "x" in all the boxes that apply.)

Property is:

- A owned by a religious institution or used for religious purposes.
- B removed from its original location.
- C a birthplace or grave.
- D a cemetery.
- E a reconstructed building, object, or structure.
- F a commemorative property.
- G less than 50 years of age or achieved significance within the past 50 years.

Narrative Statement of Significance

(Explain the significance of the property on one or more continuation sheets.)

9. Major Bibliographical References

Bibliography

(Cite the books, articles, and other sources used in preparing this form on one or more continuation sheets.)

Previous documentation on file (NPS):

- preliminary determination of individual listing (36 CFR 67) has been requested
- previously listed in the National Register
- previously determined eligible by the National Register
- designated a National Historic Landmark
- recorded by Historic American Buildings Survey # \_\_\_\_\_
- recorded by Historic American Engineering Record # \_\_\_\_\_

Primary location of additional data:

- State Historic Preservation Office
- Other State agency
- Federal agency
- Local government
- University
- Other

Name of repository:

Greene Co. Lincoln Highway Preservation Group Inc.

10. Geographical Data

Acreage of Property 19.2 acres

UTM References

(Place additional UTM references on a continuation sheet.)

1	1,5	3 9,3 0,0,0	4,6 5,2 8,3,0
	Zone	Easting	Northing
2	1,5	3 9,4 2,8,0	4,6 5,2 8,4,0

3	1,5	3 9,6 5,0,0	4,6 5,2 8,3,5
	Zone	Easting	Northing
4	1,5	3 9,7 1,6,0	4,6 5,2 8,1,0

See continuation sheet

Verbal Boundary Description

(Describe the boundaries of the property on a continuation sheet.)

Boundary Justification

(Explain why the boundaries were selected on a continuation sheet.)

11. Form Prepared By

name/title Rebecca Conard

organization PHR Associates date July 13, 1992

street & number 275 Crescent Park Drive telephone 712/657-3347

city or town Lake View state IA zip code 51450

Additional Documentation

Submit the following items with the completed form:

Continuation Sheets

Maps

A USGS map (7.5 or 15 minute series) indicating the property's location.

A Sketch map for historic districts and properties having large acreage or numerous resources.

Photographs

Representative black and white photographs of the property.

Additional items

(Check with the SHPO or FPO for any additional items)

Property Owner

(Complete this item at the request of SHPO or FPO.)

name Greene County

street & number Greene County Courthouse telephone 515/386-2516

city or town Jefferson state Iowa zip code 50129

Paperwork Reduction Act Statement: This information is being collected for applications to the National Register of Historic Places to nominate properties for listing or determine eligibility for listing, to list properties, and to amend existing listings. Response to this request is required to obtain a benefit in accordance with the National Historic Preservation Act, as amended (16 U.S.C. 470 et seq.).

Estimated Burden Statement: Public reporting burden for this form is estimated to average 18.1 hours per response including time for reviewing instructions, gathering and maintaining data, and completing and reviewing the form. Direct comments regarding this burden estimate or any aspect of this form to the Chief, Administrative Services Division, National Park Service, P.O. Box 37127, Washington, DC 20013-7127; and the Office of Management and Budget, Paperwork Reductions Projects (1024-0018), Washington, DC 20503.

United States Department of the Interior  
National Park ServiceNational Register of Historic Places  
Continuation SheetSection number 7 Page 1*Buttrick's Creek to Grand Junction Segment, Lincoln Highway, Greene County, Iowa**Narrative Description*

The Buttrick's Creek to Grand Junction Segment consists of 2.4 miles of continuous rural, paved road. At the west edge, the road begins at a point north and east of the Buttrick's Creek bridge in Grant Township (T83N, R30W) where the traveled roadway narrows from 22' to 18' on the line between Sections 1 and 12. The road then extends due east for 2.4 miles to a "Y" intersection with Highway 144 in Junction Township (T83N, R29W). Associated structures located along this segment include four culverts and the road drainage system. All component properties are further described below. The road was paved with concrete in 1924 but has since been covered with asphalt. The original 66' right-of-way, alignment, plan and profile, and appurtenant features remain intact. The intersection at Highway 144 retains an older type of highway design. Instead of a meeting at a straight "T", the Lincoln Highway makes a curved "Y", leaving a small triangular parcel of land in the center. At one time there were many of these "Y" intersections on Iowa highways, but most of them have been eliminated.

Official maps of Greene County confirm that this segment of the route was part of the Lincoln Highway from the time the route was established in 1913 until it was absorbed into the federal highway system. The setting is fairly level farm country, with five intact farmsteads along the 2.4 mile segment. At one farm, located between sections 6 and 7 of Junction Township, a diagonal fence line marks the path of an old jog which took the road beside the front of the farmhouse. This jog was straightened to follow the section line in about 1920, leaving the rear of the house facing the road.<sup>1</sup> Two farmsteads depicted on 1923 highway construction plans have been substantially altered with most historic buildings removed. The Grand Junction Cemetery lies on the north side of the road near the western outskirts of Grand Junction. Its ornate wrought iron entrance gate and stands of mature trees contribute substantially to the historic character of the landscape. Dale's Standard Station, a former service station now used intermittently as a roadside market, and a cabin court (closed) are located at the intersection

---

1 Greene County Board of Supervisors' Minutes record a contract and agreement between the Cooms family, the board, and the state that provided for straightening Lincoln Highway between Sections 6 and 7 of T83N, R29W and abandoning the jog. The Cooms family received \$1500 and agreed to let the public use the jog until improvements were made. The county agreed to remove the gravel.

United States Department of the Interior  
National Park ServiceNational Register of Historic Places  
Continuation SheetSection number 7 Page 2

CFN-259-1116

*Buttrick's Creek to Grand Junction Segment, Lincoln Highway, Greene County, Iowa*

with Highway 144 (on the east side of Highway 144). Preliminary investigation indicates that the cabin court probably dates from the early 1950s. Further research may indicate that the gas station meets National Register eligibility criteria for its association with the Lincoln Highway, but it is not included as part of this nomination.

Twelve right-of-way markers occur at .1 mile intervals in this segment. As is true elsewhere along the highway, these markers occur only on the south side (no markers have been observed where the route travels in a north-south direction). In addition, these markers seem to occur only in Greene County; no markers have been observed in adjoining counties. It is therefore possible that they were placed along the highway by Greene County, although no reference to them has been found in Board of Supervisors' minutes. The markers are similar in design to guardrail posts which are depicted in historic photographs of bridges along the highway, but markers do not appear in these photographs. Their origin is thus speculative. For these reasons, they are considered important components of the historic setting, but not contributing resources. Further research may indicate that they should be recounted as contributing resources.

*Contributing Resources*

- 1) 2.4 miles of 18' rural roadway with 66' r-o-w (one structure)

The 1923 Iowa Highway Commission plans show this section was to be paved, and a contract was let to Empire Construction Co. on November 24, 1923 for grading and paving Primary Road No. 6 (Lincoln Highway), Section C, as this stretch of the highway was designated. Work was completed in 1924. The concrete surface has since been covered with asphalt, but the traveled roadway remains the same width, 18', and the cross-section profile remains essentially unchanged.

United States Department of the Interior  
National Park ServiceNational Register of Historic Places  
Continuation SheetSection number 7 Page 3

CFN-259-1116

*Buttrick's Creek to Grand Junction Segment, Lincoln Highway, Greene County, Iowa*2) road drainage system (counted as one structure)

The road drainage system comprises two lines of 6" drainage tiles, which parallel the highway on both sides, and 12 intakes. As noted on the 1923 highway plans, about half the tiling had already been completed by then; the remainder was done as part of the 1924 road construction project. Tile probes, field observation of water flowing from drain tile outlets in culverts, and conversations with residents along the highway indicate that most of the original drain tiles are still in place and functioning properly. Each of 12 intakes consists of a conical-shaped cast iron grate covering a subsurface concrete cylinder. All of the intake locations are noted on the 1923 plan. Locations occur on both sides of the road.

3) 4 culverts, located as follows from the west beginning point (four structures):

\* at .7 mi.

A 14" concrete driveway culvert with 7' straight headwalls is located on the south side of the roadway.

\* at 1.15 mi.

A 27"x33'6" concrete box culvert with 12' straight headwalls is located here. The 1923 plans note this culvert as existing. Site inspection indicates that it has not been extended.

\* at 1.53 mi.

A 7'x5'x15' concrete box culvert with no headwalls is located under the Grand Junction Cemetery driveway on the north side of the road. The 1923 plans indicate the structure was existing at that time.

United States Department of the Interior  
National Park Service

## National Register of Historic Places Continuation Sheet

Section number 7 Page 4

CFN-259-1116

### *Buttrick's Creek to Grand Junction Segment, Lincoln Highway, Greene County, Iowa*

\* at 1.65 mi.

A 10'x4'6"x34' concrete box culvert with wing headwalls is located at this spot. The 1923 plans indicate that an existing culvert was extended and a concrete floor was poured as part of the 1924 road construction project.

### *Noncontributing Resource*

- 1) cattle pass, located at .75 mi. from the west beginning point (one structure):

A 9'x5'x40' concrete cattle pass with 8' wing headwalls is located under the road at this point. A construction contract shows that this structure was built in 1940. Although it is similar to concrete box culverts in design and materials, it is counted as a noncontributing resource because it was not built during the period of significance established for the Lincoln Highway in Greene County.



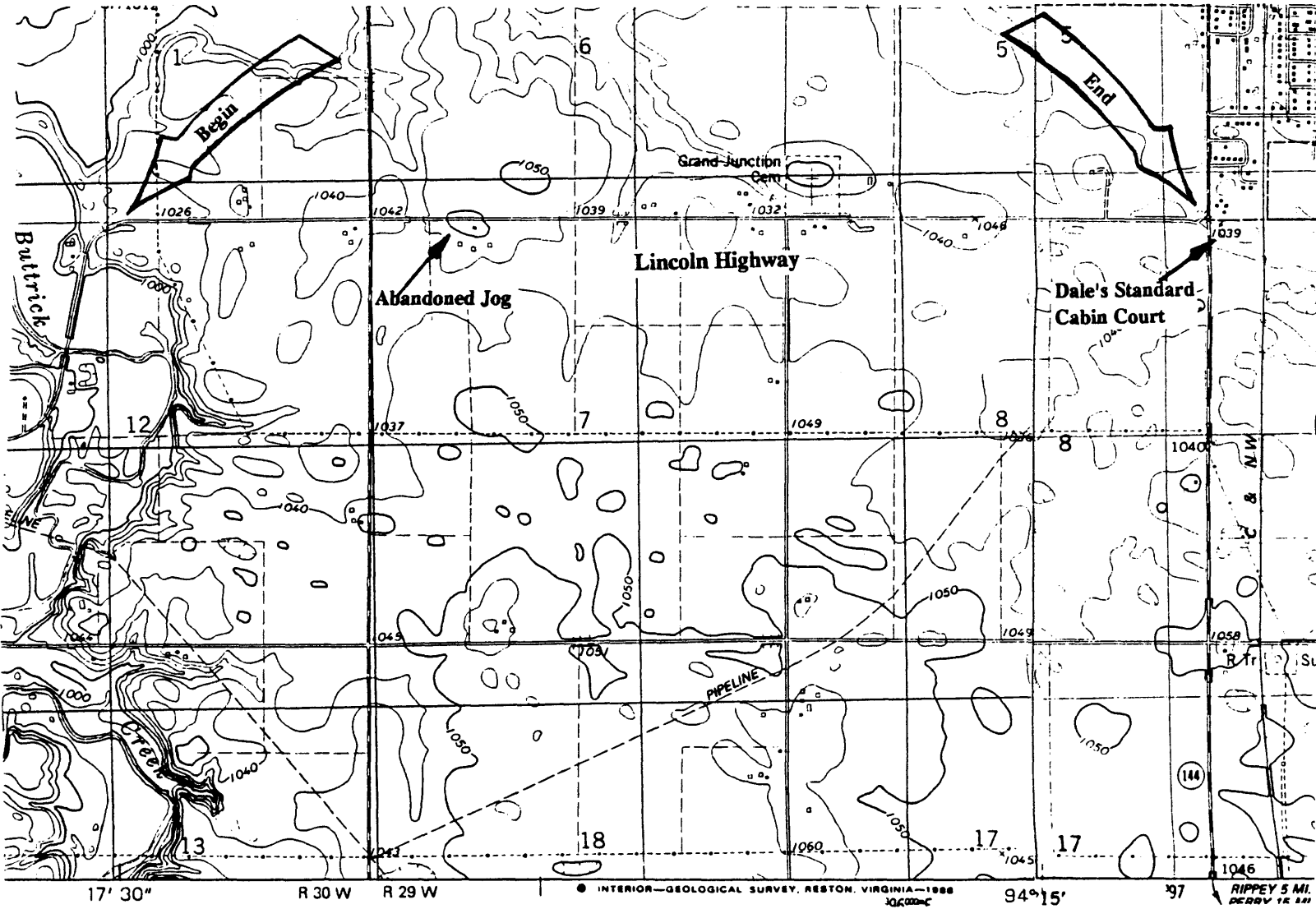
United States Department of the Interior  
National Park Service

National Register of Historic Places  
Continuation Sheet

Section number 7 Page 5

*Buttrick's Creek to Grand Junction Segment, Lincoln Highway, Greene County, Iowa*

*Resource Location Map (U.S.G.S. Jefferson East Quadrangle, 7.5 minute, 1986  
and Grand Junction Quadrangle, 7.5 minute, 1982)*



United States Department of the Interior  
National Park ServiceNational Register of Historic Places  
Continuation SheetSection number 8 Page 1*Buttrick's Creek to Grand Junction Segment, Lincoln Highway, Greene County, Iowa**Statement of Significance*

The Buttrick's Creek to Grand Junction Rural Segment of the Lincoln Highway is significant under Criterion A as a district which embodies the evolution of highway engineering standards between 1913 and 1928. The 2.4 mile segment is part of the original route established in 1913, and the route never changed through this area of Greene County. Presumably this segment was included in the thirty miles of the highway which were graded and graveled in 1914.<sup>2</sup> The 1923 highway construction plans prepared by the Iowa Highway Commission indicate that the culverts and about half of the road drainage system were already in place by that time.<sup>3</sup> This would correlate with local records, which show considerable drainage system construction underway in the late 1910s and early 1920s, even though these records are not detailed enough to determine precisely where drainage construction was taking place at any given time.<sup>4</sup> In 1924, this segment of the road was included in the highway improvement project which completed concrete paving of the rural Lincoln Highway through Greene County.<sup>5</sup> As part of the project, the road drainage system was completed. Greene County became the first county in Iowa to pave its entire rural highway route, maintaining its reputation as a pioneer in road and highway construction in Iowa. Field inspection indicates that since that time, the only major change to the highway has been the addition of an asphalt overlay.

---

2 *Jefferson Bee*, 18 February 1914.

3 1923 Plan and Profile of Proposed Improvement on the Primary Road System, Federal Aid Project No. 39, Greene County, East and West of Jefferson Extending Federal Aid Project No. 39 to the County Lines, Iowa State Highway Commission. Located at Iowa Department of Transportation.

4 Greene County Board of Supervisors' Minutes, 1910-1924 passim; Greene County Drainage District Records, 1905-1924 passim.

5 Contract dated November 24, 1923 between Greene County and Empire Construction Company of Des Moines for grading and paving on Primary Road No. 6, Section C. Contract located at Iowa Department of Transportation.

**United States Department of the Interior  
National Park Service**

# **National Register of Historic Places Continuation Sheet**

Section number   9   Page   1  

---

*Buttrick's Creek to Grand Junction Segment, Lincoln Highway, Greene County, Iowa*

***Bibliographical Reference***

See footnotes for sources cited in this nomination. Refer to Section I of the Multiple Property Documentation Form for complete bibliography and source location information.

**United States Department of the Interior  
National Park Service**

# **National Register of Historic Places Continuation Sheet**

Section number   10   Page   1  

---

*Buttrick's Creek to Grand Junction Segment, Lincoln Highway, Greene County, Iowa*

*Boundary Description*

The boundaries of the Buttrick's Creek to Grand Junction Rural Segment are a 66' corridor, 33' on either side of the centerline, extending from a point north and east of the Buttrick's Creek bridge in Grant Township (T83N, R30W), where the traveled roadway narrows from 22' to 18' on the line between Sections 1 and 12, then extending due east for 2.4 miles to the intersection with Highway 144 in Junction Township (T83N, R29W).

*Boundary Justification*

The 66' corridor represents the legal highway right-of-way.