

United States Department of the Interior
National Park Service

National Register of Historic Places
Registration Form



This form is for use in nominating or requesting determinations for individual properties and districts. See instructions in *How to Complete the National Register of Historic Places Registration Form* (National Register Bulletin 16A). Complete each item by marking "x" in the appropriate box or by entering the information requested. If any item does not apply to the property being documented, enter "N/A" for "not applicable". For functions, architectural classification, materials, and areas of significance, enter only categories and subcategories from the instructions. Place additional entries and narrative items on continuation sheets (NPS Form 10-900a). Use a typewriter, word processor, or computer to complete all items.

1. Name of Property

Historic name Wayne Commercial Historic District

Other names/site number See Section 7 Individual Building Descriptions

2. Location

Street & number See Section 10, Page 16 Verbal Boundary Descriptions

Not for publication ☐

City or town Wayne

Vicinity ☐

State Nebraska Code NE County Wayne Code 179 Zip code 68787

3. State/Federal Agency Certification

As the designated authority under the National Historic Preservation Act of 1986, as amended, I hereby certify that this ☒ nomination ☐ request for determination of eligibility meets the documentation standards for registering properties in the National Register of Historic Places and meets the procedural and professional requirements set forth in 36 CFR Part 60. In my opinion, the property ☒ meets ☐ does not meet the National Register Criteria. I recommend that this property be considered significant ☐ nationally ☐ statewide ☒ locally. (See continuation sheet for additional comments.)

Michael J. Smith
Signature of certifying official

Oct 23, 2009
Date

Director, Nebraska State Historical Society
State or Federal agency and bureau

In my opinion, the property ☐ meets ☐ does not meet the National Register criteria. (See continuation sheet for additional comments.)

Signature of certifying official/Title

Date

State or Federal agency and bureau

4. National Park Service Certification

I, hereby, certify that this property is:

☒ entered in the National Register.

☐ see continuation sheet.

☐ determined eligible for the National Register.

☐ see continuation sheet.

☐ determined not eligible for the National Register.

☐ removed from the National Register.

☐ other, (explain): _____

Edison H. Beall
Signature of Keeper

12.8.09
Date of Action

Wayne Commercial Historic District

Name of Property

Wayne, Nebraska

County and State

5. Classification**Ownership of Property**

(Check as many boxes as apply)

☒ Private☒ Public-local☐ Public-state☐ Public-federal**Category of Property**

(Check only one box)

☐ Building(s)☒ District☐ Site☐ Structure☐ Object**Number of Resources within Property**

(Do not include previously listed resources in the count.)

Contributing

44

Noncontributing

24

Buildings

Sites

Structures

Objects

44

24

Total

Name of related multiple property listing

(Enter "N/A" if property is not part of a multiple property listing.)

N/A

Number of contributing resources previously listed in the National Register

0

6. Function or Use**Historic Functions**

(Enter categories from instructions.)

Transportation: Rail-Related

Agriculture/Subsistence: Processing

Commerce/Trade: Specialty Store

Government: City Hall; Commerce/Trade: Business

Commerce/Trade: Professional

Commerce/Trade: Financial Institution

Commerce/Trade: Department Store

Commerce/Trade: Restaurant; Commerce/Trade: Post Office

Current Functions

(Enter categories from instructions.)

Commerce/Trade: Business

Commerce/Trade: Professional

Commerce/Trade: Specialty Store

Commerce/Trade: Organization

Commerce/Trade: Restaurant

Vacant/Not In Use

7. Description**Architectural Classification**

(Enter categories from instructions.)

Late 19th & 20th Century RevivalsLate 19th & Early 20th Century American Movements

No Style

Materials

(Enter categories from instructions.)

Foundation Stone, brick

Walls Brick, stone, wood clapboard

Roof Synthetic

Other

Narrative Description

(Describe the historic and current condition of the property on one or more continuation sheets.)

United States Department of the Interior
National Park Service

National Register of Historic Places
Continuation Sheet

Wayne Commercial Historic District

Name of Property

Wayne, Nebraska

County and State

Section 7 Page 1

PHYSICAL DESCRIPTION

The Wayne Commercial Historic District is a collection of sixty-eight (68) commercial buildings in the central business district of Wayne, the county seat of Wayne County, Nebraska. The district encompasses South Main Street as it relates to the railroad tracks, two-and-a-half blocks of North Main Street and portions of Second Street.¹ This area contains the majority of the community's remaining late nineteenth to early and mid twentieth century buildings, constructed to support transportation, agricultural and commercial ventures.

Wayne is located in Wayne County, in the northeastern corner of Nebraska along State Highways 15 and 35. The county is bound by Cuming and Stanton Counties on the south, Pierce County on the west, Cedar and Dixon Counties on the north and by Dixon County and the Winnebago and Omaha Native American Reservations on the east. The population in the city of Wayne, according to the 2000 census, is 5,583. Many residents work in occupations related to or supporting the agricultural community, government, small manufacturing/wholesale enterprises or are associated with the liberal arts college located there.

The city of Wayne is situated in the fertile ground between two of the Platte River's many tributaries, the Elkhorn River to the south and Logan River to the north. The town was platted in anticipation of the branch railroad which was constructed to connect the cities of Norfolk to the southwest and Sioux City to the northeast. The railroad followed a number of small creek beds on its path from Sioux City to Norfolk and the original (and current) Wayne town plat is a quarter mile north of one of those creek beds, South Logan Creek.

Streets in Wayne were laid out with Main Street running north-south, almost perpendicular to the railroad tracks. Numbered streets, running east-west, escalate north starting with First Street which is located less than a half-block north of the railroad and Main Street intersection. The railroad intersects Main Street at approximately a thirty degree angle as it heads southwest towards the city of Norfolk. A typical city block is 320 foot square and surrounded by 80 foot wide streets. Two perpendicular sixteen-foot wide alleys divide each block into quarters. The shortest dimension of each building lot runs north-south. Blocks facing Main Street are divided into twelve, approximately twenty-five (25) foot by one-hundred and fifty-two (152) foot narrow business lots. Blocks facing other north-south streets are divided into six, approximately fifty (50) by one-hundred and fifty-two (152) residential / business lots.

Within the district most brick street pavers have been removed and replaced with concrete. Since Main Street also serves as State Highway 15, it is three lanes wide. The center lane is used for a turning lane. There are a number of stop lights along Main Street since it is used by the business district and the state highway system. The most prominent intersection in the Wayne Commercial Historic District is Main and Second Streets. Historically, prominent businesses

¹ The district formally includes the west side of North Main Street from the 100 block north to the alley of the 300 block, the east side of North Main Street from the alley of the 100 block north to the alley of the 300 block, the west side of 100 block of South Main Street, the north side of East 2nd Street from North Main Street to the alley east of Logan Street and the south side of West 2nd Street from North Main Street to North Pearl Street.

United States Department of the Interior
National Park Service

National Register of Historic Places
Continuation Sheet

Wayne Commercial Historic District

Name of Property

Wayne, Nebraska

County and State

Section 7 Page 2

and structures important to the community, such as the Old City Hall and the Farmers Union Cooperative Grain Elevator, were built along Second Street.

The buildings in this district can be associated with three primary uses: agriculture, transportation and commerce. Each use is entirely dependent upon the other. Without railroad or highway transportation arteries, agricultural commodities cannot be shipped to larger urban areas. Without commercial ventures, transportation arteries and rural farmsteads could not be supported. And finally without the desire to cultivate the land, neither transportation arteries nor commercial enterprises would be needed.

Buildings found along the railroad tracks in most Midwest and Plains states were typically directly related to either transportation or agricultural uses. Wayne is no exception; two train depots, two grain elevators and four auto repair shops listed within this document are located directly adjacent to the railroad tracks. Commercial development in Wayne has been focused on the north side of the tracks since its original founding.

Structures within this district are classified by this document as either contributing or non-contributing. Contributing buildings retain a strong sense of history, are associated with events or developments that are important to Wayne's past and are at least 50 years of age. Non-contributing buildings have been modified to such an extent that the historic integrity has been covered or lost, or they are less than 50 years of age.

Forty-four (44) buildings contribute to the historic and architectural character of the district, twenty-four (24) buildings do not contribute to the district and six (6) building depicted in the 1937 Sanborn map have been lost and have not been supplanted since that time.² Buildings that do not contribute to the district are typically benign additions that do not affect the overall quality of the district. As is typical with many Main Street commercial buildings throughout the country, storefronts are the first elements of a building to undergo transformation. Many of those same properties retain a high level of integrity in their upper stories or parapets. In some cases, these storefront modifications have contributed to the history of the building; in others they have completely concealed it. Still others are so striking that they actual gain significance in their own right. Examples of each can be found in the Wayne Commercial Historic District.

Most buildings described in the following text are either one or two stories in height with most of the two-story buildings being located within the 200 block. Many are characterized by horizontal decorative parapets, decorative brick moldings and simple vertical pilasters. Rear building facades are very utilitarian in character, have varied setbacks, irregular fenestration patterns and most have been significantly altered or added to. Unless noted otherwise, buildings are Two-Part Commercial Block structures. These contributing resources all date from a time when Wayne experienced tremendous growth and change from 1881 through 1959.

² Non-extant buildings are indicated on the Wayne Commercial Historic District Map included in the nomination (Section 10, Page 34). They included sites at 112 North Main Street (Number 18), 106 East Third Street (Number 46), North Logan Street (Number 65), North Logan Street (Number 66), 115 North Main Street (Number 73), 113 North Main Street (Number 74).

United States Department of the Interior
National Park Service

National Register of Historic Places
Continuation Sheet

Wayne Commercial Historic District

Name of Property

Wayne, Nebraska

County and State

Section 7 Page 3

Contributing Properties

Forty-four (44) contributing buildings in the historic district are listed below by address and an identification number which has been keyed to the Wayne Commercial Historic District Map included in the nomination (Section 10, Page 34).

#1-6 118-200 South Main Street, ca. 1925

Although these buildings have a continuous red brick façade with buff glazed brick decorative features, each has an individual address and a different footprint. The buildings are of frame or corrugated metal construction and utilitarian design. The façade was likely added to improve the appearance of these buildings along Wayne's Main Street. On the façade, each bay utilizes a separate centrally located door with a glazed brick hood mold. Each door is flanked on either side by either an overhead door opening or a large window opening with decorative glazed brick sill. A glazed brickmold, spanning the entire group of buildings, sit directly above the overhead door and window openings. With the exception of a gabled parapet at 124 and 126 South Main, a continuous stone parapet runs along the rest of the buildings. Recessed masonry panels, now painted, are emphasized with decorative glazed brick. Although the buildings are today used as storage facilities, they were constructed in the late 1920's for use as auto repair and parts shops.

#8 South Main Street, P.V. Elevator Company, 1889

This elevator just west of South Main Street has had only minor modifications and additions since its original construction. Sheathed in metal, but built with crib construction, it had a capacity of 15,000 bushels by 1930. Typical of the Rural Wood Elevator form, the protruding upper story of the building indicates the location of the head house where the grain elevating mechanism would be positioned.

#9 110 South Main Street, Freight Depot, 1883

Although the building no longer sits on its original raised platform and the wood structure is sheathed in corrugated metal, it still exhibits many of the character defining features of its original appearance. A simple, single-story, gable roofed building, the deep roof overhang, roof brackets and stick style gable braces are still in place. The bay window which originally allowed the agent or operator a clear view of the tracks is also still evident. When the Passenger (Modern) Depot was constructed, this building continued to be used as the freight depot. The building is currently being used for storage by Carhart Lumber.

#10 106 South Main Street, Passenger Depot, 1912

A one-story brick building with varying hipped asphalt shingled roofs and deep overhangs, the building was constructed to accommodate rail passenger traffic. Although the train track associated with the building is no longer extant, the building still stands in its original location. The roof of the outdoor waiting veranda on the northeast side of the building is supported by square wood posts with battered (tapered) masonry column bases rising into a simply detailed segmental wood arch. A continuous limestone still visually ties together each of the large flat arched double hung windows. Although currently unoccupied the building is in good condition.

United States Department of the Interior
National Park Service

National Register of Historic Places
Continuation Sheet

Wayne Commercial Historic District

Name of Property

Wayne, Nebraska

County and State

Section 7 Page 4

#12 100 North Main Street, c 1900

A One-Part Commercial Block structure with a Colonial Revival stylistic influence, the building at 100 North Main Street fronts both North Main Street and West First Street. This brick masonry building, constructed prior to 1902, exhibits finely scaled dentil work and a nicely painted cornice. The original openings in the chamfered front entrance and segmental arched windows with sandstone lug sills remain primarily unaltered although the original door and windows have been replaced with aluminum storefront. It has served as a point of entry for North Main Street since the turn of the 20th century.

#13 102 North Main Street, 1901

Built in conjunction with 104 North Main Street, this single-story brick masonry building exhibits a corbelled parapet. Modern storefront infill and awnings sits below a cast iron beam that runs across the entire façade.

#14 104 North Main Street, 1901

Built in conjunction with the building at 102 North Main Street, this single-story brick masonry building features three recessed brick panels below the corbelled parapet. Between each recessed panel is a decorative diamond brick relief pattern. The originally storefront has been removed and replaced with a mansard shingled roof, aluminum storefront, wood paneling and a stone veneer knee wall.

#15 106 North Main Street, c 1890

Constructed of brick masonry, this two-story building is simple in its ornamentation. Modern stucco faced storefront infill covers the entire lower zone of the façade. Two pairs of second-story, double-hung eight-over-one wood windows with aluminum screens have stone sills and a continuous brick soldier course lintel. Another soldier course and a stone band break up the facade. A checkerboard brick pattern rests above the stone band and is capped with a stone parapet.

#16 108 North Main Street, c 1925

This single-story, flat-roofed, brick masonry building exhibits finely detail brick corbels below the parapet. A centrally located door is recessed. The recessed doorway is flanked on either side by small fixed aluminum windows set within wood paneling and brick veneer wainscot. This modern storefront composition is framed on either side by the original brick masonry end walls.

#17 110 North Main Street, 1926

The most noticeable feature on the primary façade of this single-story building is a centrally-located, recessed arched doorway. The recessed entrance is flanked on either side by large display windows. Above the door is a semicircular fanlight. The red colored brick masonry of this flat roofed building is further enhanced by decorative blond colored brick units in the parapet, masonry end walls, and continuous window sills.

#20 115 West 2nd Street, Old City Hall, 1912

Originally Wayne's City Hall, this building was renovated for use as by the city's Fire Department. Despite the noticeable changes to the first floor, this building still exhibits bilateral symmetry and a variety of Neo Classical

United States Department of the Interior
National Park Service

National Register of Historic Places
Continuation Sheet

Wayne Commercial Historic District

Name of Property

Wayne, Nebraska

County and State

Section 7 Page 5

details. The projected two-story center bay is capped by a bracketed pediment. Three windows beneath that pediment, with the widest unit in the center, have jack arches with stone keystones and springing voussoirs. Brick Piers with stone capitols are still evident at the first floor although the two original arched openings have been removed and replaced with a large overhead door. The first floor of each flanking bay has also been modified, but the original second story window openings are still extant as is the masonry dentil work at each respective cornice. A large single story masonry addition was added to the west side of the building. This addition does not compromise the integrity of the original building.

#22 110 West Second Street, 1954

This single-story masonry veneered building has a continuous parapet. The primary façade is faced in red brick laid in a stacked bond. In the center of the façade an angled entry is faced with stone laid in a square cut ashlar pattern. An aluminum entrance door is located off center in the recessed angled wall. A large plate glass aluminum frame window with stone sill is the only other fenestration.

#23 104 West 2nd Street, c 1890

Constructed in the Italianate Style, this two-story structure features a highly decorated, bracketed roofline cornice. Pairs of columns sitting on bases with recessed panels separate each of the seven windows on the second floor which are currently infilled with a stucco finished material. Although the first-story façade has been dramatically altered the changes have maintained the traditional storefront relationship between transoms, display windows and knee walls.

#24 202 North Main Street, Old First National Bank, c 1890

This two-story building was constructed at the prominent intersection of Second and North Main Streets. Built of red brick with reddish-orange stone accents, the building's most obvious ornamentation is the decorated cornice and limestone band just below a continuous brick masonry parapet. Rectangular masonry window openings with flat arches and reddish-orange continuous stone sills have been outfitted with modern windows. Hanging brick pilasters divide both the east and west façades into four symmetrical bays. Original cast iron railings and window grills remain in place on the Second Street façade. At the first floor level the entire east façade and the easternmost bay of the south façade have been modified with an aluminum storefront system, metal canopy and infill material with a stucco finish.

#25 204 North Main Street, Mine's Jewelry, c 1915

The two-story vernacular structure, located at 204 North Main Street, has a high level of historic integrity having been modified little since its original construction. The flat parapet is accentuated by a masonry cornice composed of brick dentils, vertical reveals at the frieze and paired brick brackets. Either end of this continuous masonry cornice is supported by hanging masonry pilasters, small ionic column capitols and brick corbels. Three windows with jack arches and stone sills punctuate the second floor level. The first floor storefront is in excellent condition and retains a high level of integrity.

United States Department of the Interior
National Park Service

National Register of Historic Places
Continuation Sheet

Wayne Commercial Historic District

Name of Property

Wayne, Nebraska

County and State

Section 7 Page 6

#26 206 North Main Street, c 1890

This upper zone of this One-Part Commercial Block exhibits a decorative corbelled brick pattern at the cornice and a dentil pattern just above a modified storefront. The single-story, vernacular, brick masonry building has a flat roof. The storefront is composed of brick veneer, fluted aluminum panels, porcelain panels, aluminum doors and windows. A corrugated metal canopy shelters the sidewalk.

#27 208 North Main Street, c 1905

Although brick detailing at this building replicates the detailing at 206 North Main Street, this single-story structure was built later according to Sanborn Maps of the area. It is also a One-Part Commercial Block vernacular building. The storefront has also been replaced although it is composed of a stone wainscot, painted wood panels above an aluminum canopy and aluminum door and storefront.

#28 210 North Main Street, c 1915

Constructed of brick masonry, this two-story structure sits just to the south of an alley. The first floor has been modified with an aluminum storefront and brick masonry knee walls. The second floor still exhibits stylistic influence of the Neo-Classical Revival Style. Two brick pilasters with ionic column capitals divide the façade into three bays each exhibiting a rectangular window. The original windows have been modified and resized, but the original masonry openings remain in place. Brick dentils and a bracketed painted cornice emphasize the horizontal lines of the upper portion of the façade.

#29 212 North Main Street, Dr. W.C. Wightman Building, c 1892

This Richardsonian Romanesque structure is one of the nicest examples of a High-Style building in downtown Wayne. Heavy rusticated stone piers on either side of the façade support a cast iron beam. Short, robust, rusticated masonry columns support two heavy round arches which rise above the beam and provide the openings for Chicago-style bay windows. The textural nature of the building façade is further emphasized through the checkerboard pattern of rusticated and smooth square stone units and foliated decoration on the column capitals and cornice. The storefront has been modified with a sympathetic aluminum frame, glass and opaque transom decorated with a replication of the checkerboard pattern above.

#30 214 North Main Street, c 1892

Alive with three dimensional ornament, the second-story of Two-Part Commercial Block at 214 North Main Street is divided into two halves by three decorated brick pilasters. On either side of the center pilaster is a large, round arched window opening. A decorative tin cornice and brick masonry parapet with recessed, checkerboard panels cap the flat roofed building. The first floor storefront has been replaced.

#31-32 216 & 218 North Main Street, P.L. Miller and B.J. Kass Building, c 1892

With its heavily rusticated stone facades, the building at 216 and 218 North Main Street immediately stands out because of its lighter color. It is also an unusual application of the Two-Part Commercial Block massing type in this Commercial Historic District. The width of two lots, the building was constructed for P.L. Miller and B.J. Kass whose names can still be seen in the parapets of 216 and 218 North Main Street respectively. The first floor

United States Department of the Interior
National Park Service

National Register of Historic Places
Continuation Sheet

Wayne Commercial Historic District

Name of Property

Wayne, Nebraska

County and State

Section 7 Page 7

storefronts of the rusticated stone structure have been modified although the centrally located stair leading to the second floor still remains as evident from the modern door. A checkerboard pattern created via rusticated and smooth square stone units decorates the space between the cast iron beam supporting the storefront below and the stone sill of the rectangular windows above. A thin bracketed stone cornice and stepped roofline crown the building.

#33 220 North Main Street, c 1895

A fine example of a One-Part Commercial Block, this vernacular building sits at 220 North Main Street. Although the display and transom windows have been modified, the simple gabled parapet with recessed masonry panel is the best example of a number of other similar structures, both still standing and no longer extant, found within Wayne's Commercial Historic District.

#34 222 North Main Street, c 1900

Another example of a One-Part Commercial Block Vernacular style building sits on the corner of Third and Main Street. This flat-roofed, brick masonry building features a decorated cornice and trimmed stone at the parapet. The original storefront has been removed and replaced with a corrugated aluminum panel and aluminum storefront system.

#37 300 North Main Street, 1925

This vernacular, single-story brick masonry building features decorative brickwork at the cornice and a relief panel below the cornice. The One-Part Commercial Block also has stone parapet caps. The storefront has been infilled with stucco, brick veneer, aluminum doors and windows.

#39 306 North Main Street, 1916

The One-Part Commercial Block was constructed in 1916. The vernacular building is detailed in a similar fashion to the building located at 300 North Main Street with its decorative brickwork and relief panel below the cornice. A soldier course emphasized the lintel above the storefront. The original storefront has been removed and replaced with corrugated tin, aluminum storefront and brick wainscot.

#41 311 North Main Street, c 1925

This vernacular, single-story, flat-roofed building is constructed of dark colored brick masonry. The only decoration found on the building includes a stone parapet cap, a soldier course at the storefront and tan colored brick accents. The storefront is composed of painted metal panels, brick wainscot, aluminum doors and display windows. A sidewalk canopy spans the full width of the building.

#42 309 North Main Street, Vel's Bakery, 1915

This One-Part Commercial Block is an excellent example of a storefront modification that is significant in its own right. The original storefront was modified around 1930 according to Wayne County Assessor data. Set within a simple, vernacular building constructed of brick masonry with a flat roofed and brick-corbelled parapet, the

United States Department of the Interior
National Park Service

National Register of Historic Places
Continuation Sheet

Wayne Commercial Historic District

Name of Property

Wayne, Nebraska

County and State

Section 7 Page 8

glazed tile, aluminum awning and aluminum storefront constitutes a well-executed modification that used materials now considered iconic of the era.

#51 217 North Main Street, c 1895

This vernacular, One-Part Commercial Block is constructed of blond-colored brick masonry laid in a common bond pattern. Although the storefront has been modified, the relationship between the lower zone of the aluminum storefront and the transom window infill has been retained. An aluminum sidewalk canopy shelters the centrally located, recessed aluminum entrance door.

#52 215 North Main Street, c 1925

This two-story building occupies two adjacent lots along North Main Street. A centrally located entrance is flanked on either side by a aluminum storefront sitting on a black tile wainscot. The sidewalk canopy features a decorative pattern along its exposed edge. The transom windows above the awning have been infilled. The second-story of the building is visually divided into two symmetrical bays by brick piers capped with decorative stone. A soldier course tops the flat arch window heads. The original masonry openings have been infilled with a combination of wood panel, insulated panel or smaller double hung window units. The cornice is simply decorated with a brick corbelling and a full-width recessed brick panel directly below.

#55 205 North Main Street, 1932

This two-story, vernacular brick masonry building still retains its 1932 storefront, black tile wainscot and centrally located door. Although the transom windows above a new fabric faced canopy have been infilled, the original opening is still visible. Three double hung windows are centered at the second-story.

#56 203 North Main Street, McNatt Hardware, c 1890

Designed in the Italianate Style, the two-story building is constructed of brick masonry. A tin cornice is visually supported by brackets aligning with brick pilasters. The pilasters on either end extend to grade and the center pilasters are supported by a cast iron storefront beam. Compounded round arches top four windows at the second floor. Above and below each window opening is a brick masonry recessed panel. The original storefront was removed and has been replaced with masonry infill, aluminum storefront and a metal awning.

#57 201 North Main Street, Larson & Kuhn's, c 1905

Located on the northeast corner of the intersection of North Main and Second Street, the two-story building at 201 North Main Street is influenced by the Neo-Classical Revival Style. An elaborate, painted cornice with brackets and dentils sits a few feet below the parapet and is supported by brick pilasters with ionic stone capitals at the second story level. Windows between the pilasters have been replaced with smaller sized units although the original masonry openings were not modified. The first floor storefront was renovated in 1965 with an aluminum storefront system, aluminum siding and mosaic tile facing. Above the cornice, brick dentils sit directly below stone coping at the parapet and a raised section at the southwest corner of the building roofline highlights the corner.

United States Department of the Interior
National Park Service

National Register of Historic Places
Continuation Sheet

Wayne Commercial Historic District

Name of Property

Wayne, Nebraska

County and State

Section 7 Page 9

#59 114 East Second Street, c 1935

This single-story, brick masonry building features a front facing gable with decorative brick accents. A continuous shed roof canopy is supported by round wooden posts. The lower zone of the building is faced with wood paneling and can be divided into four bays according to the window and door fenestration. Three of the bays feature a large fixed window. The entrance to the building is found in the eastern interior bay.

#60 116 East Second Street, c 1915

This single-story, brick masonry building also features a front facing gable, although the gable in this case is decorated with three equally spaced recessed brick panels. The canopy and storefront from the adjacent 114 East Second Street building is continuous across the façade of 116 East Second Street building.

#61 118 East Second Street, c 1900

The primary façade of this two-story, brick masonry building can be divided into four bays. Each bay is separated by a large brick pier and pier capitals. Large openings are centered in each bay at the first floor level. The openings at either end of the façade have been infilled with brick masonry. The openings in the center bays have been infilled with a combination of aluminum doors, wood paneling or stucco. Each bay on the second floor also had a single window opening. The stepped brick cornice is broken in the center bays by brick corbelling.

#68 206 East Second Street, Farmers Union Cooperative Grain Elevator, 1918

The last grain elevator constructed in the downtown area, this elevator was constructed with a capacity of 35,000 bushels. It is of crib construction and has been sheathed in metal. This elevator also follows the Rural Wood Elevator form with an upper story head house. The addition to the east was constructed sometime after the publication of the 1937 Sanborn Fire Insurance Maps.

#70 121 North Main Street, 1952

This single-story, blond-colored brick masonry structure is vernacular in nature. The horizontal parapet of the flat roofed building is undecorated. A continuous aluminum awning sits above an aluminum storefront and brick masonry wainscot. A pair of recessed aluminum doors is located in the center of the façade.

#72 117 North Main Street, c 1925

A single-story, brick masonry building is vernacular in nature. The only decoration is in the building's cornice. The original display windows have been removed and replaced with aluminum storefront and metal panels. An aluminum awning spans the width of the storefront.

Non-contributing Properties

Twenty-four (24) non-contributing buildings in the historic district are listed below by address and an identification number which has been keyed to the Wayne Commercial Historic District Map included in the nomination (Section 10, Page 33).

United States Department of the Interior
National Park Service

National Register of Historic Places
Continuation Sheet

Wayne Commercial Historic District

Name of Property

Wayne, Nebraska

County and State

Section 7 Page 10

#7 116 South Main Street, 1971

This single-story building is constructed of concrete block masonry. A corrugated metal, gable roof can be seen behind the building's false front. A centrally located door is flanked on the north side by a plate glass window and on the south by a double hung aluminum window. The building is considered non-contributing to this district because it falls short of the 50 year age requirement.

#11 108 West First Street

This single-story, concrete block and painted brick masonry building has a full-width shingled canopy. The front façade fenestration includes three door openings and two plate-glass windows located on either side. The building is considered non-contributing to this district because it falls short of the 50 year age requirement.

#19 114 North Main Street, 1966

This single-story brick masonry building occupies two building lots. The façade is decorated with rhythmically spaced columns and a single continuous horizontal member. An aluminum door, sidelight and large transom window provide the only fenestration on the primary façade of this flat roofed building. The building is considered non-contributing to this district because it falls short of the 50 year age requirement.

#21 122 North Main Street

This two-story building features a centrally located arched window and entrance composition. Brick masonry columns, varying heights at the roof parapet and entrance canopy create a composition of heavy vertical and horizontal lines. The building is considered non-contributing to this district because it falls short of the 50 year age requirement.

#35 109-111 West Third Street, c 1935

This single-story, brick masonry building was constructed around 1935, but was extensively remodeled in 1981. A new brick face was installed on the primary façade along with a pair of new entrance doors and awnings. Four vertical breaks in the brick wall rise from base to the top of the flat parapet. Windows have been located in these slits. Stucco has been used to cover all of the non-primary facades. The building is considered non-contributing to this district because all original building material has been removed or concealed.

#36 108 West Third Street, c 1925

The single-story, flat roofed building has been modified extensively. The west building has been covered with stucco and siding. An aluminum door and small aluminum window are the only fenestration on the primary façade. The east side of the building was faced with a tile mural and brick veneer after the period of significance for this nomination.

#38 304 North Main Street, c 1925

Recently, an extensive remodel has altered the appearance of this single-story, flat-roofed building dramatically. New brick was installed on the primary façade along with pre-cast stone parapet caps, aluminum doors and windows, awnings and stucco.

United States Department of the Interior
National Park Service

National Register of Historic Places
Continuation Sheet

Wayne Commercial Historic District

Name of Property

Wayne, Nebraska

County and State

Section 7 Page 11

#40 310 North Main Street, c 1925

The façade of this single-story, brick masonry building has been modified a number of times since it was originally constructed. This work included a full width shingle roof, modern brick veneer, aluminum doors and windows. The theater's most recent marquee is intact.

#43 305 North Main Street, Wayne Federal Savings & Loans, 1920

Although this single-story building was originally constructed in 1920, it was extensively remodeled in 1961. The remodel included the brick masonry building face we see today. Perfectly symmetrical in form, a centrally located aluminum door and storefront shaft rises from base to just below the parapet. Above the glass entry is a panel of mosaic tile. Ventilation louvers just below the parapet flank either side of the entrance. This building is considered non-contributing to this district because the character defining modification falls short of the 50 year age requirement.

#44 303 North Main Street, First National Insurance Agency, c 1935

This building was extensively remodeled and all original building material has been removed or concealed. The only fenestration in this simple brick masonry box is an aluminum door and small sidelight. An awning partially extends across the façade.

#45 301 North Main Street, First National Bank, 1960

With its cubist form, flat roof and corner storefront, the building at 301 North Main Street is influenced by the International Style. A stone wall near the south west corner of the building provides a stylized wind break for the building entrance, and is carried into the building in a Miesian fashion. The building is considered non-contributing to this district because it falls short of the 50 year age requirement.

#47 109 East Third Street, c 1970

A single-story, flat roofed building faced with stone veneer sits adjacent to the alley between North Main Street and North Logan. The building has a shed roofed canopy that extends over the sidewalk. A single window and door with transom is the only fenestration on the primary façade. The building is considered non-contributing to this district because it falls short of the 50 year age requirement.

#48 223 North Main Street, 1890

This two-story, flat roofed, brick masonry building has two primary facades, one facing North Main Street and the other facing East Third Street. The corner between the primary facades has been chamfered. A decorative cornice crowns the top of the building and the second-story double-hung vinyl windows are capped with segmental arched stone hoods. The brick masonry on the west façade was laid to create textural relief panels below the window sills. The lower zone of the building has a stucco finish and existing window openings have been modified.

United States Department of the Interior
National Park Service

National Register of Historic Places
Continuation Sheet

Wayne Commercial Historic District

Name of Property

Wayne, Nebraska

County and State

Section 7 Page 12

#49 221 North Main Street, 1898

Although this single story building is among the oldest in the district, all original building material has been removed or concealed. Within the aluminum storefront, a single centrally located aluminum door provides the only access into the building from Main Street. A metal awning also characterizes the storefront. The upper portion of the building has been completely concealed with tin siding.

#50 219 North Main Street, 1893

Like the adjacent building at 221 North Main Street, all original building material has been removed or concealed. Within the aluminum storefront, a single centrally located aluminum door provides the only access into the building from Main Street. A metal awning also characterizes the storefront. The upper portion of the building has been completely concealed with tin siding.

#53 211 North Main Street, 1959

The primary façade of this single-story, flat roofed building is dominated by a front-facing vinyl-sided gable, aluminum storefront and corrugated metal. The centrally located aluminum door sits between symmetrical sidelights. The building is considered non-contributing to this district because all original building material has been removed or concealed.

#54 207 North Main Street, c 1905

The single-story, brick masonry building occupies two lots and features a large shingled roof. The building has been remodeled a number of times, once in 1928 and again in 1979. The building is considered non-contributing to this district because all original building material has been removed or concealed.

#58 108 East Second Street, c 1905

Constructed of brick masonry laid in a common bond pattern, this single-story building is vernacular in nature. Original overhead door openings have been infilled. Smaller windows have been installed in larger masonry openings. This building is considered non-contributing to this district because much of the original building material has been removed or concealed.

#62 208 North Logan Street, c 1940

The building at 208 North Logan Street is also a single-story, vernacular building constructed of blond-colored brick masonry laid in a common bond pattern. Although most of the building fenestration is still being used as intended, all the original material has been removed and replaced. Therefore this building is considered non-contributing to this district.

#63 211 North Logan Street, 1963

The pitched roof lines and tapered steel structure of this service station speak to the Exaggerated Modern Gas Station architectural style. Although the canopy does not extend to the west of the building over the area that at one time was where the gas pumps were located, the pitched lines of the office roof differentiate this building

United States Department of the Interior
National Park Service

National Register of Historic Places
Continuation Sheet

Wayne Commercial Historic District

Name of Property

Wayne, Nebraska

County and State

Section 7 Page 13

from the other Domestic and Main Street Conformist styled garages and filling stations located along Main Street, many of which are no longer in existence. The building is considered non-contributing to this district because it falls short of the 50 year age requirement.

#64 205 North Logan, unknown

This single-story, false-front building has been sheathed in corrugated metal. Doors have been replaced over time. This building is considered non-contributing to this district because much of the original building material has been removed or concealed.

#67 203 North Main Street, 1968

This grain elevator is the last elevator to be constructed in the District. Built by Wayne Grain and Feed, the structure is sheathed in metal. The building is considered non-contributing to this district because it falls short of the 50 year age requirement.

#69 200 East Second Street, 1968

This single story building is constructed of blond block masonry. Both the west and south façades of the building still maintain the original fenestration. The building is considered non-contributing to this district because it falls short of the 50 year age requirement.

#71 119 North Main Street, c 1890

Among the oldest buildings in the district, the building at 119 North Main Street is two-stories in height with a flat roof. All building facades have been sheathed in stucco. The lower zone of the building has been modified with a modern brick veneer laid in a stacked bond, wood paneling and aluminum door. The upper zone of the building can be divided into two bays. Each bay features a pair of double hung windows and a semicircular decorative arch. This building is considered non-contributing to this district because much of the original building material has been removed or concealed.

Wayne Commercial Historic District

Name of Property

Wayne, Nebraska

County and State

8. Statement of Significance**Applicable National Register Criteria**

(Mark "X" in one or more boxes for the criteria qualifying the property for National Register listing.)

- ☒ **A** Property is associated with events that have made a significant contribution to the broad patterns of our history.
- ☐ **B** Property is associated with the lives of persons significant in our past.
- ☐ **C** Property embodies the distinctive characteristics of a type, period, or method of construction or represents the work of a master, or possesses high artistic values, or represents a significant and distinguishable entity whose components lack individual distinction.
- ☐ **D** Property has yielded, or is likely to yield information important in prehistory or history.

Criteria Considerations

(Mark "X" in all the boxes that apply.)

Property is:

- ☐ **A** Owned by a religious institution or used for religious purposes.
- ☐ **B** Removed from its original location.
- ☐ **C** A birthplace or a grave.
- ☐ **D** A cemetery.
- ☐ **E** A reconstructed building, object, or structure.
- ☐ **F** A commemorative property.
- ☐ **G** Less than 50 years of age or achieved significance within the past 50 years.

Narrative Statement of Significance

(Explain the significance of the property on one or more continuation sheets.)

Areas of Significance

(Enter categories from instructions.)

Commerce

Transportation

Period of Significance

1881-1959

Significant Dates

1881

1891

Significant Person

(Complete if Criterion B is marked above.)

N/A

Cultural Affiliation

N/A

Architect/Builder

N/A

9. Major Bibliographical References**Bibliography**

(Cite the books, articles, and other sources used in preparing this form on one or more continuation sheets.)

Previous documentation on file (NPS):

- ☐ Preliminary determination of individual listing (36 CFR 67) has been requested
- ☐ Previously listed in the National Register
- ☐ Previously determined eligible by the National Register
- ☐ Designated a National Historic Landmark
- ☐ Recorded by Historic American Buildings Survey # _____
- ☐ Recorded by Historic American Engineering Record # _____

Primary location for additional data:

- ☐ State Historic Preservation Office
- ☐ Other State agency
- ☐ Federal agency
- ☒ Local Government
- ☐ University
- ☒ Other
- Name of repository: Omaha Public Library
Wayne Public Library

United States Department of the Interior
National Park Service

National Register of Historic Places
Continuation Sheet

Wayne Commercial Historic District

Name of Property

Wayne, Nebraska

County and State

Section 8 Page 14

STATEMENT OF SIGNIFICANCE

The Wayne Commercial Historic District is significant under National Register Criterion A for its association with the city of Wayne located in Wayne County, Nebraska. The community's growth is the result of concurrent transportation and commercial development beginning with the city's founding and establishment as the county seat. The period of significance begins in 1881, the year Wayne was platted, and ends in 1959, 50 years before the present. A fire on Thanksgiving 1891 had a significant impact on Main Street, as early frame structures were quickly replaced with impressive masonry buildings that reflected the commercial vitality of the times. Overall, the district reflects the growth of Wayne as it developed from an agricultural prairie railroad village to a thriving community, meeting the commercial needs of its residents and the surrounding county.

EARLY AGRICULTURAL SETTLEMENT

As in many other areas throughout the Midwest and Great Plains, land in Wayne County was purchased by homesteaders, speculators that attracted homesteaders and businessmen looking to provide the goods homesteaders would need as they cultivated the land. Community histories state that Willard Graves,³ a man from Illinois, traveled to the area in 1867, purchased land and returned to Illinois. Two years later he made the trek back with a number of families from Lee County, Illinois and settled in the southeastern part of the future county. Other settlers followed and soon frame shanties or dugouts were built on a number of homesteads. By 1870 the county was formally organized, boundaries were defined and Wayne County was legalized by the State of Nebraska in March of the next year.

THE IMPACT OF THE RAILROAD

The importance of rail transportation in communities throughout the region could not be better illustrated than by the history of Wayne's founding. After the county's organization in 1870, two small communities in Wayne County served as the county seat of government at different times, Taffe (1870-1873, no longer extant) and LaPorte (1873-1884, no longer extant). LaPorte became an established village and had a population "which at its most flourishing period numbered about 300 residents"⁴.

In June of 1880, O.D. Brown, R.B. Crawford and James Britton purchased the half section where Wayne is currently located and donated it to Frank H. Peavey, a prominent grain merchant with railroad connections, who began selling lots for the future community. By the summer of 1881, it became apparent that the Chicago, St. Paul, Minneapolis and Omaha Railroad would not extend their line through LaPorte. The company was building a railroad to connect the cities of Sioux City, Iowa to the northeast of Wayne and Norfolk, Nebraska to the southwest. Railroad officials decided to establish a new community on Peavey's land. It is in this way that Brookdale was founded and officially platted in August of 1881, only four miles west and two miles to the north of LaPorte.

With the location of the railroad inevitable, many LaPorte residents moved their homes and businesses, either by hauling them or putting them on sleds, to the new railroad community, whose name was quickly changed from

³ *Wayne County Nebraska History* (Wayne, NE: The Society, 1981), 19.

⁴ *The Wayne Herald* (Wayne, Nebraska): "Centennial Souvenir Edition 1884 - 1984." 28 August 1984.

United States Department of the Interior
National Park Service

National Register of Historic Places
Continuation Sheet

Wayne Commercial Historic District

Name of Property

Wayne, Nebraska

County and State

Section 8 Page 15

Brookdale to Wayne. The railroad laid their track along the north side of the South Logan Creek bed and like many other communities in the Midwest and Great Plains States, the original town plat of Wayne was designed in a "T-shaped" configuration.⁵ It is typical, in communities laid out according to this plan, for Main Street to intersect the train tracks. A railroad depot is located at the resulting intersection. Wayne follows this pattern. The railroad tracks were laid from northeast to southwest and Main Street is orientated north to south. The commercially developed section of Main Street was historically platted to the north of the intersection and this condition still holds today. Streets were also platted according to the typical 80'-0" width found in many railroad communities throughout the Midwest and Great Plains States.⁶

The first train arrived in Wayne in the spring on 1882 and a frame depot was built in 1883 at 110 South Main Street (Building Number 9, Section 10, Page 30). Beginning in 1882, LaPorte and Wayne waged a court battle to determine which community should be home to the county seat. Although the battle was still ongoing in March of 1883, the first meeting of the County Commissioners was held in Wayne. Eventually the case was affirmed and the county seat contest was settled in Wayne's favor in 1884. The established and thriving community of LaPorte was vacated and its past existence is marked by a roadside granite marker. The remains of the cupola from the original courthouse now sit on the northwest corner of the Wayne County Courthouse Square. One community was lost and another created as a result of where the railroad laid its tracks.

Once the railroad entered Wayne County, settlement of the area boomed. The population of the county grew from approximately 180 in 1870 to over 800 by 1880. By 1900 that number had increased to over 9,800 people living in Wayne County.⁷ The number continued to hold around 10,000 throughout the rest of the Wayne Commercial Historic District's stated period of historic significance. With the increase of rail passenger traffic, the Chicago, Minneapolis, St. Paul and Omaha railroad constructed a new masonry depot in 1912 at 106 South Main Street (Building Number 10, Section 10, Page 30). The building was touted as having "everything for the convenience of patrons."⁸ Built at a cost of approximately \$25,000, it had a large public waiting room, ladies waiting room, large plate glass mirrors, tile flooring throughout, steam heat and a toilet. Upon the construction of the Passenger Depot, the 1883 Frame Depot continued to be used by the railroad exclusively for freight shipping.

DOWNTOWN GROWTH & DEVELOPMENT BEFORE 1900

By 1884 the population in the community of Wayne grew to 200 people and the town reported 33 structures at the time. During the same year it was incorporated as a village. Within the next six years the population grew to approximately 1,130 residents and by this time there were many different businesses located along Main Street. Some businesses, such as the flour mills, grain elevators, harness shops, agricultural implement companies, tin shops and a blacksmith⁹ were directly related to the agricultural trade.

⁵ Conzen, Michael P. *The Making of the American Landscape* (New York: Routledge, 1994),

⁶ Chinn, Jennie A. *The Kansas Journey* (Layton Ohio: Gibbs Smith, 2005) 151.

⁷ U.S. Census Bureau. (1910)

⁸ *The Wayne Herald* (Wayne, Nebraska): "Centennial Souvenir Edition 1884 – 1984." 28 August 1984.

⁹ *Wayne County Nebraska History*, 103- 104.

United States Department of the Interior
National Park Service

National Register of Historic Places
Continuation Sheet

Wayne Commercial Historic District

Name of Property

Wayne, Nebraska

County and State

Section 8 Page 16

In 1889 the P.V. Elevator Company was responsible for the construction of the grain elevator located along South Main Street (Building Number 8, Section 10, Page 30). The company was run and established by one of Beatrice's founding investors, Frank Hutchinson Peavey (1850-1901) known by the late 1890's as the "Grain Elevator King of the World."¹⁰ Born in Maine, Peavey arrived in Chicago in 1865. By 1870 he had moved to Sioux City, Iowa, which was at that time a hundred miles from the nearest railroad, and became a partner in an implement firm. Eventually the firm began buying and selling wheat and built a small elevator. Eleven years later he bought out his partner and convinced officials of the Chicago, St. Paul and Minneapolis Railroad to permit him to extend his line of grain warehouses all the way from Sioux City to St. Paul. After moving his business to Minneapolis, he continued to extend his network of grain elevators west along the Union Pacific, Northern Pacific and Great Northern rail lines. During the 1880's the company continued to grow towards the East and West Coasts, even operating four of the largest freighters on the Great Lakes. The Peavey Company grew internationally, shipping wheat from Oregon to Liverpool, and even discussed the possibility of a joint venture to modernize grain handling on the Siberian railroad route with the Russian Tsar. Although the company continued to expand during the twentieth century the elevator in Wayne was sold to the Saunders West Band Company by 1909. Prior to 1921 the elevator was purchased by M. Kroger and later the Rohrke Elevator Company. In 1971 Wayne Grain and Feed expanded their business from 201 Logan Street and purchased the elevator, later remodeling it.

In addition to the railroad buildings and grain elevators previously mentioned, downtown mercantile ventures such as general, grocery, drug and clothing stores were in business by 1884. In addition, the district boasted a number of newspapers, hotels, banks, doctors, lawyers, barbers, restaurants and a laundry.¹¹

The early commercial buildings in downtown Wayne constructed along Main Street were typically of wood-frame construction. Some were two stories in height and most exhibited false fronts. These early buildings were slowly replaced with brick one or two-story buildings constructed throughout the very late 19th century and first two decades of the 20th century.

First National Bank of Wayne was one of those businesses that began with a frame building on Main Street. The company went on to construct a two-story building in 1890 at 200 and 202 North Main Street (Building Number 24, Section 10, Page 31). The history of the bank begins before the founding of Wayne. In 1880 the bank, at that time called Logan Valley Bank, was founded by three men in LaPorte. Two of the partners, John T. Bressler (1849-1935) and D.C. Patterson, decided to move the bank to Wayne when they heard the train tracks were not being laid through LaPorte. The structure was moved to the west side of Main Street, just south of the 200 block alley. Bressler, who was named president of the bank, was prominent during the early years of Wayne's history. In addition to serving on numerous county boards and fraternal organizations, Bressler was City Mayor in 1910 and donated much of the city's park land. On a state and national level, he served as state senator in 1884 and was the government director for the

¹⁰Ingham, John N. *Biographical Dictionary of American Business Leaders* (Greenwood Publishing Group, 1983) 1068.

¹¹Wayne County Nebraska History, 103-104.

United States Department of the Interior
National Park Service

National Register of Historic Places
Continuation Sheet

Wayne Commercial Historic District

Name of Property

Wayne, Nebraska

County and State

Section 8 Page 17

Union Pacific Railroad in 1897.¹² By 1885 the bank reorganized, officially became First National Bank and five years later constructed their new building on the corner of 2nd and Main Streets.¹³

Although there were a number of fires throughout the history of the Wayne Commercial Historic District, one changed the face of the district in particular dramatically fashion. In 1891, the vibrant downtown area experienced a raging fire on Thanksgiving night. The fire destroyed six frame structures on the west side of Main Street just south of Third Street (212, 214, 216, 218, 220 and 222 North Main Street). Today the block is filled with some of the nicest masonry commercial buildings in the district.

One of those buildings, the Dr. William C. Wightman Building located at 212 North Main Street (Building Number 29, Section 10, Page 31) was constructed shortly after the 1891 fire. Dr. Wightman (1861-1930) was born and educated in St. Louis, Missouri. He traveled to Omaha and eventually was one of the early settlers in Wayne and later owned a considerable amount of rural real estate. A physician for the Union Pacific Railroad, which utilized the tracks going through town, he served as the Wayne County Physician and on the County's Board of Health as early as November 1884. He was also responsible for the construction of another property in Wayne currently listed on the National Register of Historic Places. His 1900 shingle style home, the Wightman-Ley House (WY05-001) is located at 702 Lincoln Street. Wightman sold the home to Rollie Ley in 1910 when he and his family moved to California for health reasons.

Prior to the 1891 fire, P.L. Miller operated a wood-framed grocery at 216 North Main Street (Building Number 31, Section 10, Page 31). A Canadian immigrant, Miller came to the community shortly after it was founded, opening his grocery store in Wayne in 1884. He was also politically active in Wayne, serving on the city council as early as 1890. Despite the use of thirty barrels of salt and the city's bucket brigade during the 1891 fire, the wood structure was quickly engulfed by the flames. Within the next year, Miller and druggist B.J. Kass had constructed the limestone edifice we see today at 216 and 218 North Main Street (Building Number 32, Section 10, Page 31).

DOWNTOWN GROWTH & DEVELOPMENT FROM 1900 TO 1930

By the turn of the century, Wayne was home to a well-established college and was serviced by a fine Richardsonian Romanesque courthouse [WY05-002], an improved fire department, newspaper, telephone lines and its own power plant. From 1900 until 1930, thirty-five (35) of the buildings in the Wayne Commercial Historic District were constructed.

Shortly after the turn of the century, the building at 104 North Main Street (Building Number 14, Section 10, Page 30) was constructed for William Piepenstock. He emigrated from Germany in 1886 and came to the Wayne area to visit his brother. Local histories state that he fell in love with a local girl. He married her in 1889 and began his business as a

¹² *The Wayne Herald* (Wayne, Nebraska): "A Celebration of Time," (26 February 2009), 26.

¹³ The bank continued to utilize the building until 1960 when a new building at 301 North Main Street (Building Number 45, Section 10, Page 7) was constructed. This building was occupied by the bank until a new structure was built in 2007 at 411 East 7th Street.

United States Department of the Interior
National Park Service

National Register of Historic Places
Continuation Sheet

Wayne Commercial Historic District

Name of Property

Wayne, Nebraska

County and State

Section 8 Page 18

harness maker around that same time at this location. The frame building caught fire and the masonry building we see today was built shortly after in 1901.

The only building specifically built to fill a government purpose found in the Wayne Commercial Historic District was also constructed between 1900 and 1930. The old City Hall located at 115 West Second Street (Building Number 20, Section 10, Page 30) was built in 1912 at a cost of \$10,740. The two-story masonry building housed the city offices until 1936 when the auditorium was built. By 1938, the fire department was already housing equipment in the building and the first floor was used for the city jail. The second floor was used for Legion rooms and an assembly hall. The volunteer fire department constructed the addition to the west when it became the building's only occupant. Today the building is vacant. The City Hall housed the local governmental offices needed to encourage and regulate Wayne's commercial and transportation development, and after 1938, the fire equipment necessary to protect Main Street.

Another building constructed during this time period was built for Elmer Gailey around 1925. Located at 311 North Main Street (Building Number 41, Section 10, Page 32) the building was first home to Wayne Cleaners and Dryers. It has been home to a few different grocery stores, Emil Dupsky's electrical shop, Willard Wiltse's cabinet shop and has even served as a USO club. In later years it was home to Swanson TV and Appliance and then Charlie's Refrigeration and Appliance Service.

DOWNTOWN GROWTH & DEVELOPMENT AFTER 1930

Although the population of Wayne County reached its peak in 1930, the city of Wayne experienced an increase in population of over 300 people in the years between 1930 and 1940. The 1938 Wayne Business directory lists approximately 203 businesses in operation in the city of Wayne. Of those, approximately half of the owners, managers or agents began their work at some time between 1930 and 1940.

Although there were a number of people entering the mercantile or service professions, there were very few buildings constructed in the district during this time as a result of the Great Depression. Only three buildings were erected. Two were located on streets other than Main. One originally housed a printing office, another, an auto sales and repair company. The only building constructed on Main Street during this time was located at 205 North Main Street (Building Number 55, Section 10, Page 33). During the 1920s Mrs. Al Swan began selling ladies apparel in an earlier two-story wood frame building that originally stood at this location. Company histories state that because business was growing the two-story masonry building we see today was constructed.¹⁴ Although the business has changed hands a few times, Swan's Apparel still occupies this building.

In 1940 Wayne's population reached 2,719 residents and continued to grow. By the time the United States entered World War II the community and businesses in the Commercial Historic District was solidly established. Because Wayne State College was selected as one of the eighty (80) United States colleges to provide facilities for cadet training, servicemen were shipped into Wayne. The cadets took courses in leadership, military law, the honor code, academics,

¹⁴ *The Wayne Herald* (Wayne, Nebraska): "Souvenir Edition." (28 June 1976), 2.

United States Department of the Interior
National Park Service

National Register of Historic Places
Continuation Sheet

Wayne Commercial Historic District

Name of Property

Wayne, Nebraska

County and State

Section 8 Page 19

physical conditioning and flight training. As the result of weekly dances put on by the community, many soldiers married or returned to the area to wed individuals they met during their training.

IMPACT OF PAVED ROADS AND THE AUTOMOBILE

With the advent of the automobile, road associations formed to promote improved roads. One of those roads was Grainland Highway, today known as Highway 35, which travels through Wayne and terminates to the southwest at Hastings, Nebraska and to the northeast at the Sioux City, Iowa. The road came into Wayne via East 7th Street and traveled south at Main Street. It turned west at First Street until intersecting what is today still known as Grainland Road which travels southwest to Winside, Nebraska.¹⁵ By 1922 Wayne was also connected to Yankton, South Dakota via Highway 17, known today as State Highway 15. Despite being used as the main route through town, it wasn't until 1920 that Main Street was paved. Prior to that time the district utilized dirt streets, wooden sidewalks and some pavers.

When Main Street was paved newspapers of the time commented on the narrowing of sidewalks to allow for street parking. One Main Street businessman, Fred Blair, was quoted as saying "people aren't supposed to be standing out on the sidewalks visiting; they're supposed to be in the stores buying."¹⁶ This may explain why Main Street today easily accommodates two lanes of state highway traffic, a turning lane and parallel parking on either side of the street.

Throughout the county the number of paved roads increased. A study on the impact of improved surface transportation in Nebraska shows that Wayne County did not have any paved roads in 1920¹⁷ and had only 10 miles by 1940¹⁸. By 1960, one year after our period of significance ends, Wayne County had 45 miles of paved roads.¹⁹ The increased number of paved roads provided even greater impetus for economic growth in Wayne. New customers, who before found it difficult to make the trip to Wayne from surrounding communities and farmsteads, found the increase in paved roads offered more dependable and flexible transportation arteries. As a result the improved roadways contributed to the decrease in rail traffic to Wayne. In 1940, Wayne County was serviced by 40 miles²⁰ of railroad tracks; in 1960 that number had been reduced in half.²¹ By the 1970s, the railroad from Sioux City to Norfolk was sold off and abandoned and by the 1980s many of these tracks had been removed.

POST WAR CHANGES WITHIN THE WAYNE COMMERCIAL HISTORIC DISTRICT

After World War II and into the early 1950s, Wayne's Commercial Historic District experienced a period of economic stability. Available records indicate that only a few buildings had occupancy changes and even fewer businesses actually changed hands. No new buildings were constructed and only three buildings were extensively remodeled.

¹⁵ Maynard, C.F. *Wayne County Anecdotes and Historical Notes* (S.I.: Wayne County Historical Society, 1970), 22.

¹⁶ *Ibid.*, 22-23.

¹⁷ Smith, Philip R. *Improved Surface Transportation and Nebraska's Population Distribution, 1860 – 1890* (Ayer Publishing, 1981), 226.

¹⁸ *Ibid.*, 231.

¹⁹ *Ibid.*, 238.

²⁰ *Ibid.*, 231.

²¹ *Ibid.*, 238.

United States Department of the Interior
National Park Service

National Register of Historic Places
Continuation Sheet

Wayne Commercial Historic District

Name of Property

Wayne, Nebraska

County and State

Section 8 Page 20

The story of the building at 121 North Main Street (Building Number 70, Section 10, Page 33) marks the beginning of another era for the Commercial Historic District. The building was constructed in 1952 on the site of the city's famed historic Boyd Hotel. The hotel welcomed travelers to the thriving prairie village beginning in 1884 and was the scene of many social affairs including an oyster supper in 1896.²² After the hotel closed in 1942, the building experienced years of neglect and was dismantled in 1950. The new single-story masonry structure erected in its place has very simple lines, aluminum display windows and an undecorated continuous aluminum awning.²³

Construction of new buildings within the district became more and more influenced by modern architecture, such as the building at 110 West 2nd Street (Building Number 22, Section 10, Page 31). This modern styled building was constructed by attorneys Charles E. and Evelyn L. McDermott in 1954. Their law practice started in 1948 on the second floor of the Old First National Bank Building (200 North Main Street) until they constructed the new building at 110 West Second Street.

Beginning in the mid 1950's businesses began constructing new, larger properties outside of the Wayne Commercial Historic District. Changes also began to take place as a result of the increased industrial nature of new businesses opening in Wayne. Today the agricultural equipment stores and grain elevator establishments once found in the district are no longer in business or have relocated to the periphery of the city. Construction of hotels and larger "big box stores" such as Gibsons / Pamida and larger suburban type grocery stores along State Highway 35 began to draw business away from the traditional business district. As a result the business types that occupy the buildings in the Wayne Commercial Historic District have changed. Although some of the buildings in the area are still occupied by traditional entities such as banks, newspapers, financial advisors, restaurants and printing companies other businesses offering specialty products and community services now fill many of the storefronts.

CONCLUSION

Locally significant under National Register Criterion A, the Wayne Commercial Historic District is representative of concurrent transportation and commercial development in Wayne, Nebraska from 1881 until the end of its historical significance in 1959. Today little remains of the railroad tracks that came through the rural landscape of Wayne County. It is only in the Wayne Commercial Historic District that we still see evidence of the railroads that made Wayne what it is today. The locomotive, the fundamental vehicle that brought settlers to the county to cultivate the surrounding land, was also the means of transporting the fruits of their labor to other parts of the country. Commercial enterprises were established to support the homesteaders and to this day continue to serve the residents of the rural community and the city. Both shared very important roles and each contributed to the vitality of Wayne's downtown.

²² *The Wayne Herald* (Wayne, Nebraska): "Centennial Souvenir Edition 1884 – 1984," (28 August 1984), 6.

²³ The clothing store, McDonald's was the new building's first occupant and remained until closing in 1982. At that time Coast to Coast moved from its previous location into this building.

United States Department of the Interior
National Park Service

National Register of Historic Places
Continuation Sheet

Wayne Commercial Historic District

Name of Property

Wayne, Nebraska

County and State

Section 9 Page 21

Books

Alexander, Edwin P. *Down At The Depot: American Railroad Stations From 1831-1920*. New York: Clarkson N. Potter, Inc., 1970.

Bartels, Michael M. & James J. Reisdorff. *Images of Rail; Historic Railroads of Nebraska*. Chicago: Arcadia Publishing, 2002.

Camp, Mark J. *Railroad Depots of North Ohio*. Arcadia Publishing, 2007.

Chinn, Jennie A. *The Kansas Journey*. Layton Ohio: Gibbs Smith, 2005.

Conzen, Michael P. *The Making of the American Landscape*. New York: Routledge, 1994.

Dictionary of Architecture & Construction. New York: McGraw-Hill, 2000.

Gordon, Stephen C. *How To Complete the Ohio Historic Inventory*. Columbus, OH: Ohio Historic Preservation Office, 1992. 080

Graff, Jane. *Nebraska: Our Towns... North Northeast*. Dallas: Taylor Publishing Co., 1990.

Grant, H. Roger. *The Corn Belt Route; A History of the Chicago Great Western Railroad Company*. Dekalb, IL: Northern Illinois University Press, 1984.

Grant, H. Roger. *Railroads in the Heartland; Steam and Traction in the Golden Age of Postcards*. Iowa City: University of Iowa Press, 1997.

Ingham, John N. *Biographical Dictionary of American Business Leaders*. Greenwood Publishing Group, 1983.

Jennings, Jan. *American Vernacular Architecture 1870-1940*. New York, N.Y.: Van Nostrand Reinhold, 1988.

Ketchum, Milo Smith. *The Design of Walls, Bins, and Grain Elevators*. Lancaster, PA: The New Era Printing Company, 1911.

Lee, Maureen M. *Wayne County, Nebraska, Newspaper Abstracts, 1876 – 1899*. Heritage Books, 1999.

Longstreth, Richard. *The Buildings of Main Street: A Guide to American Commercial Architecture*. Washington D.C.: The Preservation Press, 1987.

Maynard, C.F. *Wayne County Anecdotes and Historical Notes*. S.I.: Wayne County Historical Society, 1970.

United States Department of the Interior
National Park Service

National Register of Historic Places
Continuation Sheet

Wayne Commercial Historic District

Name of Property

Wayne, Nebraska

County and State

Section 9 Page 22

McAlester, Virginia & Lee. *A Field Guide to American Houses*. New York: Alfred A Knopf, 2004.

Murphy, David R. "Rationale and Formulation of a Supratypology for Vernacular Houses,": in Thomas Carter and Bernard L. Herman (eds.) *Perspectives in Vernacular Architecture III*. Columbia, MO: University of Missouri Press, 1985.

Nyberg, Dorothy Huse. *History of Wayne County Nebraska: Its Pioneers, Settlement, Growth, and Development Together with a View of the Territory in 1938*. Wayne, NE: The Wayne Herald, 1938.

Rapp, William F. *The Chicago Northwestern*. Crete, NE: J-B Publishing Co., 1989.

Upton, Dell and John Michael Vlach. *Common Places, Readings in American Vernacular Architecture*. Athens, GA: University of Georgia Press, 1986.

Poor's Directory of Railway Officials and Manual of American Street Railways. New York: Poor's Railroad Manual Company, 1890.

Smith, Philip R. *Improved Surface Transportation and Nebraska's Population Distribution, 1860 – 1890*. Ayer Publishing, 1981.

Wayne County Nebraska History. Wayne, NE: The Society, 1981.

Wishart, David J. *Encyclopedia of the Great Plains*. Lincoln, Nebraska: U of Nebraska Press, 2004.

Newspapers

The Wayne Herald (Wayne, Nebraska): "Souvenir Edition." 28 June 1976.

The Wayne Herald (Wayne, Nebraska): "Centennial Souvenir Edition 1884 – 1984." 28 August 1984.

The Wayne Herald (Wayne, Nebraska): "A Celebration of Time." 26 February 2009.

The Wayne Herald (Wayne, Nebraska): "A Celebration of Time." 30 April 2009.

The Wayne Herald (Wayne, Nebraska): "A Celebration of Time." 25 June 2009.

Maps

Sanborn Map Company. Insurance Maps of Wayne. New York: 1892. Digital,

United States Department of the Interior
National Park Service

National Register of Historic Places
Continuation Sheet

Wayne Commercial Historic District

Name of Property

Wayne, Nebraska

County and State

Section 9 Page 23

Sanborn Map Company. Insurance Maps of Wayne. New York: 1897. Digital.

Sanborn Map Company. Insurance Maps of Wayne. New York: 1902. Digital.

Sanborn Map Company. Insurance Maps of Wayne. New York: 1909. Digital.

Sanborn Map Company. Insurance Maps of Wayne. New York: 1921. Digital.

Sanborn Map Company. Insurance Maps of Wayne. New York: 1930. Digital.

Sanborn Map Company. Insurance Maps of Wayne. New York: 1937. Digital.

Website

Shufelt, Donna, and Kathie Harrison. "Who's Who in Wayne County, Nebraska 1940." Wayne Co., NEGenWeb Project, 2006.

Wayne Commercial Historic District

Name of Property

Wayne, Nebraska

County and State

10. Geographical DataAcreage of property 13 Acres

UTM References (place additional UTM references on a continuation sheet).

	Zone	Easting	Northing		Zone	Easting	Northing
1.	14	663531	4677223	3.	14	663662	4677097
2.	14	663662	4677223	4.	14	663784	4677097

[x] See continuation sheet

Verbal Boundary Description

(Describe the boundaries of the property on a continuation sheet.)

Boundary Justification

(Explain why the boundaries were selected on a continuation sheet.)

11. Form Prepared Byname/title Christina A. Jansenorganization Alley Poyner Macchietto Architecturedate August, 2009street & number 1516 Cuming Streettelephone 402.341.1544city or town Omahastate NE zip code 68102**Additional Documentation**

Submit the following items with the completed form:

Continuation Sheets**Maps**A **USGS map** (7.5 or 15 minute series) indicating the property's location.A **Sketch map** for historic districts and properties having large acreage or numerous resources.**Photographs**Representative **black and white photographs** of the property.**Additional items**

(Check with the SHPO or FPO for any additional items.)

Property Owner

(Complete this item at the request of the SHPO or FPO.)

name/title See Section 10, Page 18

street & number _____

telephone _____

city or town _____

state _____

zip code _____

Paperwork Reduction Act Statement: This information is being collected for applications to the National Register of Historic Places to nominate properties for listing or determine eligibility for listing, to list properties, and to amend existing listings. Response to this request is required to obtain a benefit in accordance with the National Historic Preservation Act, as amended, (15 USC 470 et seq.).

Estimated Burden Statement: Public reporting burden for this form is estimated to average 18.1 hours per response including the time for reviewing instructions, gathering and maintaining data, and completing and reviewing the form. Direct comments regarding this burden estimate or any aspect of this form to the chief, Administrative Services Division, National Park Service, P.O. Box 37127, Washington, DC 20013-7127; and the Office of Management and Budget, Paperwork Reductions Project (1024-0018), Washington, DC 20503.

United States Department of the Interior
National Park Service

National Register of Historic Places
Continuation Sheet

Wayne Commercial Historic District

Name of Property

Wayne, Nebraska

County and State

Section 10 Page 24

UTM References (Continued): Zone 14

5. E663784, N4667044
6. E663662, N4677044
7. E663662, N4676980
8. E663595, N4676980
9. E663595, N4676781
10. E663551, N4676781
11. E666351, N4676980
12. E663478, N4676980
13. E663478, N4667044
14. E663531, N4667044

Verbal Boundary Description

The district includes the west side of North Main Street from the 100 block north to the alley of the 300 block, the east side of North Main Street from the alley of the 100 block north to the alley of the 300 block, the west side of 100 block of South Main Street, the north side of East 2nd Street from North Main Street to the alley east of Logan Street and the south side of West 2nd Street from North Main Street to North Pearl Street.

Boundary Justification

The irregularities of the Wayne Commercial District boundaries reflect an attempt to capture significant buildings not located along North or South Main Street. The boundaries also reflect a loss of concentration in contributing resources related to commerce and transpiration outside of Main Street and 2nd Street.

Specific boundary justifications are as follows.

Points 1-2: The historic integrity of resources north of this boundary declines rapidly. The boundary was drawn at the alley to include a grouping of one-story commercial buildings. Building Nos. 37-45 illustrate the more modest development found immediately north of the taller and more elaborate buildings located between 2nd and 3rd Streets.

United States Department of the Interior
National Park Service

National Register of Historic Places
Continuation Sheet

Wayne Commercial Historic District

Name of Property

Wayne, Nebraska

County and State

Section 10 Page 25

Points 2-3: This eastern boundary in the alley reflects a change in historic use from commercial along Main Street to residential along this section of Logan. Any commercial buildings that are located there lack historic integrity.

Points 3-6: This eastern jog along East 2nd Street was drawn to include the Farmer's Union Cooperative Grain Elevator (Building No. 68) along with a nice set of commercial buildings (Building Nos. 59-61).

Points 6-9: This section of the eastern boundary excludes the former Theobald and Carhart lumber yards. Although this area continues to be used for a similar purpose the buildings lack historic integrity.

Points 9-10: The southern boundary along Main Street was selected due to a decline in historic integrity.

Points 10-11: This boundary reflects a loss of historic integrity as well as a loss in the concentration of historic resources.

Points 11-14: This western jog along West 2nd Street was drawn to include Wayne's former city hall. Commercial development north of city hall along West 2nd Street has poor historic integrity.

Points 14-1: This western boundary was drawn at the alley and reflects a change of historic land use patterns from commercial along Main Street to public and domestic along Pearl Avenue.

United States Department of the Interior
National Park ServiceNational Register of Historic Places
Continuation Sheet

Wayne Commercial Historic District

Name of Property

Wayne, Nebraska

County and State

Section 10 Page 26

Current Property Owners:

*The "Building ID #s" below correspond to a map of Wayne Commercial Historic District found in Section 10, Page 30.

<i>Building ID #</i>	<i>Parcel Address</i>	<i>Parcel #</i>	<i>Current Owner: Name and Address</i>
1	200 South Main	000507800	JEROLD MEYER / FARM TO MARKET AG CENTER, INC / 58040 851ST RD WAYNE 68787
2	125 South Main	000506600	PAUL E LINDNER / 601 WESTWOOD RD WAYNE 68787
3	124 South Main		PAUL E LINDNER / 126 S MAIN WAYNE 68787
4	122 South Main		PAUEL E LINDNER / 126 S MAIN WAYNE 68787
5	120 South Main	000288800 & 000288900	MARIAN SIMPSON / 345 HIGH VIEW CIRCLE WOODLAND PARK, CO 80863
6	118 South Main	000288800	PAUEL E LINDNER / 126 S MAIN WAYNE 68787
7	116 South Main	000508300	M G WALDBAUM / WAYNE GRAIN & FEED INC / 301 CARLSON PARKWAY SUITE 400 MINNETONKA, MN 55305
8	South Main St.		
9	110 South Main	000504600	CARHART LUMBER COMPANY / 105 MAIN WAYNE 68787
10	106 South Main	000289100	ROBERT A & MARILYN CARHART / PIZZAFEST INC / PO BOX 173 WAYNE 68787
11	108 West 1st Street	000281400	HOMESTEAD CAPITAL COMPANY INC / 104 W 1ST WAYNE 68787
12	100 North Main	000281400	HOMESTEAD CAPITAL COMPANY INC / 104 W 1ST WAYNE 68787
13	102 North Main	000281600	BILL MELENA / WHITE DOG PUB INC / SAME
14	104 North Main	000281700	SURBER'S DISCOUNT FURNITURE / PO BOX 272 WAYNE 68787
15	106 North Main	000281800	HOMESTEAD HOMES INC / SAME
16	108 North Main	000281900	WOEHLER, WILLIAM FRANK / PO BOX 355 WAYNE 68787
17	110 North Main	000282000	FIRST STEP INC / 219 MAIN STREET WAYNE 68787
18	112 North Main	000282100	NORTHEAST NEBRASKA MEDIA INC / 114 MAIN PO BOX 70 WAYNE 68787
19	114 North Main	000282200	NORTHEAST NEBRASKA MEDIA INC / 114 MAIN PO BOX 70 WAYNE 68787
20	115 West 2nd Street		CITY OF WAYNE / 306 PEARL STREET PO BOX 8 WAYNE 68787
21	122 North Main	000281201	STATE NATIONAL BANK / 122 MAIN STREET PO BOX 130 WAYNE 68787

United States Department of the Interior
National Park ServiceNational Register of Historic Places
Continuation Sheet

Wayne Commercial Historic District

Name of Property

Wayne, Nebraska

County and State

Section 10 Page 27

Building ID #	Parcel Address	Parcel #	Current Owner: Name and Address
22	110 West 2nd Street	000275500	LESA ANN MCDERMOTT / 30112 HWY 12 SIOUX CITY, IA 51109
23	104 West 2nd Street	000275400	MAX R & ESSIE L KATHOL / 104 WEST 2ND WAYNE 68787
24	200 North Main	000275200	GARY VAN METER / VAN METER - FLETCHER CORPORATION / 204 MAIN WAYNE 68787
24	202 North Main	000275600	GARY VAN METER / VAN METER - FLETCHER CORPORATION / 204 MAIN WAYNE 68787
25	204 North Main	000275700	GARY VAN METER / 321 W 5TH WAYNE 68787
26	206 North Main	000275800	MIDWEST LAND CO / 206 MAIN PO BOX 132 WAYNE 68787
27	208 North Main	000275801	WAYNE MAIN STREET PROGRAM INC / 108 WEST 3RD WAYNE 68787
28	210 North Main	000275900	VINCENT J & DIANNE G LEIGHTY / 914 DOUGLAS WAYNE 68787
29	212 North Main	000276000	CRAIG M & JILL N WALLIGN / 105 MAPLE WAYNE 68787
30	214 North Main	000276100	ROLAND & JULIE ROTHER / 214 1/2 MAIN WAYNE 68787
31	216 North Main	000276200	CURTIS F & COLEEN JEFFRIES / SAME
32	218 North Main	000276300	MICON INC / 218 N MAIN PO BOX 427 WAYNE 68787
33	220 North Main	000276400	CARTER A & NANA PETERSON / 502 DOUGLAS WAYNE 68787
34	222 North Main	000276500	CARTER A & NANA PETERSON / 502 DOUGLAS WAYNE 68787
35	109 & 111 West 3rd Street	000276600	CARTER A & NANA PETERSON / 502 DOUGLAS WAYNE 68787
36	108 West 3rd Street		WAYNE AREA CHAMBER OF COMMERCE / 108 WEST 3RD STREET WAYNE 68787
37	300 North Main	000271000	KENNETH F & KAREN J KWAPNIOSKI / 1030 GRAINLAND RD WAYNE 68787
38	304 North Main		MIKE FELICISSIMO / NEBRASKA COLORADO CELLULAR INC. / 1224 WEST PLATTE FORT MORGAN, CO 80701
39	306 North Main	000271200	DARRELL & EVELYN DOESCHER / SAME
40	310 North Main	000271300	TERRY L & MICHELE D JOHNSON / PO BOX 355 VERMILLION SD 57069
41	311 North Main	000269400	JASON SCHULZ / 115 WEST 1ST STREET WAYNE 68787
42	309 North Main	000269500	VELLVIN G & SUSAN J TEMME / 514 WAYSIDE LANE WAYNE 68787

United States Department of the Interior
National Park ServiceNational Register of Historic Places
Continuation Sheet

Wayne Commercial Historic District

Name of Property

Wayne, Nebraska

County and State

Section 10 Page 28

Building ID #	Parcel Address	Parcel #	Current Owner: Name and Address
43	305 North Main	000269600	THOMAS T HANSEN / 190 Y RD WISNER 68791
44	303 North Main	000269700	FIRST NATIONAL BANK / 411 E 7TH STREET PO BOX 10 WAYNE 68787
45	301 North Main	000269900	MOHUMMED H SADDEN / FIRST NATIONAL BANK 411 E 7TH ST PO BOX 10 WAYNE 68787
46	106 East 3rd Street	000269900	MOHUMMED H SADDEN / FIRST NATIONAL BANK 411 E 7TH ST PO BOX 10 WAYNE 68787
47	109 East 3rd Street	000275800	M M MEYER, LLC / 85257 578 AVE WAYNE 68787
48	223 North Main	000276900	EARNEST E & WENDY PING / 57043 858TH RD WAYNE 68787
49	221 North Main	000277000	RANDALL A PEDERSEN / 1022 LINCOLN WAYNE 68787
50	219 North Main	000277100	FIRST STEP INC / 219 MAIN STREET WAYNE 68787
51	217 North Main	000277200	PAC N SAVE INC / 1115 WEST 7TH STREET WAYNE 68787
52	215 North Main	000277300	PAUL E LINDNER / 601 WESTWOOD RD WAYNE 68787
53	211 North Main	000277400	CARTER A & NANA PETERSON / 502 DOUGLAS WAYNE 68787
54	207 North Main	000277500	CARTER A & NANA PETERSON / 502 DOUGLAS WAYNE 68787
55	205 North Main	000277700	MARIE L MOHR / SAME
56	203 North Main	000277800	JOANNE J MC NATT / 603 WEST 2ND WAYNE 68787
57	201 North Main	000277900	ANNE NOLTE / KAST INC / 201 MAIN ST WAYNE 68787
58	108 East 2 nd St.	000277900	ANNE NOLTE / KAST INC / 201 MAIN ST WAYNE 68787
59	114 East 2 nd St.	000278000	MINESHAFT MANAGEMENT INC / PO BOX 244 WAYNE 68787
60	116 East 2 nd St.	000278000	MINESHAFT MANAGEMENT INC / PO BOX 244 WAYNE 68787
61	118 East 2 nd St.	000278100	RENEE M JACOBSEN / 57680 862ND RD WAYNE 68787
62	208 North Logan	000278101	BBL ENTERPRISES INC / 311 SOUTH MAIN STREET WAYNE 68787
63	211 Logan Street	000278700	ARNIE'S FORD-MERCURY INC / 1023 HILCREST RD WAYNE 68787
64	205 Logan Street	000278700	ARNIE'S FORD-MERCURY INC / 1023 HILCREST RD WAYNE 68787
65	Empty Lot	000278700	ARNIE'S FORD-MERCURY INC / 1023 HILCREST RD WAYNE 68787
66	Empty Lot	000278800	M G WALDBAUM / WAYNE GRAIN & FEED INC / 301 CARLSON PKWAY SUITE 400 MINNETONKA, MN 55305
67	203 Logan Street	000278800	M G WALDBAUM / WAYNE GRAIN & FEED INC / 301 CARLSON PARKWAY SUITE 400 MINNETONKA, MN 55305

United States Department of the Interior
National Park Service

National Register of Historic Places
Continuation Sheet

Wayne Commercial Historic District

Name of Property

Wayne, Nebraska

County and State

Section 10 Page 29

<i>Building ID #</i>	<i>Parcel Address</i>	<i>Parcel #</i>	<i>Current Owner: Name and Address</i>
68	206 East 2nd Street	000278800	M G WALDBAUM / WAYNE GRAIN & FEED INC / 301 CARLSON PARKWAY SUITE 400 MINNETONKA, MN 55305
69	201 Logan Street	000278800	M G WALDBAUM / WAYNE GRAIN & FEED INC / 301 CARLSON PARKWAY SUITE 400 MINNETONKA, MN 55305
70	121 North Main	000281201	DAVID R & KATHRYN J LEY / PO BOX 130 WAYNE 68787
71	119 North Main	000280300	WAYNE AERIE NO 3757 OF THE FRATERNAL ORDER OF EAGLES / SAME
72	117 North Main	000280400	FELIPE & MARIA SANCHEZ / 325 COLONIAL CIRCLE WEST POINT 68788
73	115 North Main	000280500	STEVEN A & LISA M KAREL / 85471 HWY 15 WAYNE 68787
74	113 North Main	000280600	STEVEN A & LISA M KAREL / 85471 HWY 15 WAYNE 68787

United States Department of the Interior
National Park ServiceNational Register of Historic Places
Continuation Sheet

Wayne Commercial Historic District

Name of Property

Wayne, Nebraska

County and State

Section 10 Page 30

Building History:

*The "Building ID #s" below correspond to a map of the Wayne Commercial Historic District found in Section 10, Page 34.

Bldg ID #	Street #	Street Name	Year Built	Status	Business Listings: Previous and Present
1	200	South Main	c 1925	C	Elec. Motors; Farm to Market Ag Center
2	125	South Main	c 1925	C	Radio Shop & Auto Repair; Auto Repair; Lindner Construction
3	124	South Main	c 1925	C	Auto Storage
4	122	South Main	c 1925	C	Car Repair
5	120	South Main	c 1925	C	Auto Storage; Auto Repair
6	118	South Main	c 1925	C	Office
7	116	South Main	1971	NC	Wayne Grain and Feed (1975)
8		South Main	1889	C	P.V. Electric Company; Rohrke Elevator (- 1971); Wayne Grain & Feed (- 1971)
9	110	South Main	1883	C	Freight Depot; Carhart Lumber #4
10	106	South Main	1912	C	Train Depot; Godfather's
11	108	West 1st St		NC	First Source Title & Escrow
12	100	North Main	c 1900	C	Bon Tron; Depot Restaurant or Corner Restaurant; Hoover's Short Order House; New Delmonico Restaurant; Capital Saloon; Gem Café; Gem Discount Liquor; Trio Travel
13	102	North Main	1901	C	Billiards (Ca. 1921); White Dog Pub
14	104	North Main	1901	C	Wm. Piepenstock Harness Shop; Ray Surber Furniture (1934-1950), Surber Floor Covering; King's Carpets(1970-Ca.1976); 1934 Photo; Discount Store
15	106	North Main	c 1890	C	Sonneken's General Merchandise; Robert Hefti General Merchandise; Venetian Beauty Shop; Henry Hachmeier Repair Shop; Hentry Hachmeier Implements; Tiedtke Soft Water; Kugler Electric (1973-Ca.1976); Homestead Homes
16	108	North Main	c 1925	C	Jacques Cleaners; Nebraska Cleaners; Lester Electric, Plumbing and Heating; Russ Tiedtke; NE Family Insurance Group
17	110	North Main	1926	C	Wheaton Lueders, Barbers, Perry & Porterfield Livestock Dealers; Wayne Herald (1926-1966); Brandstetter Insurance Agency; Wayne Veterinary Clinic; Computer Farm; Centennial Shop; Liska, Liska & Swerczek Veterinary; Job Site
18	112	North Main		NE	Parking Lot
19	114	North Main	1966	NC	Wayne Herald (1966-present)
20	115	West 2nd Street	1912	C	City Hall (Old); Fire station; Jail; Legion Rooms
21	122	North Main		NC	State National Bank & Trust Bldg

United States Department of the Interior
National Park ServiceNational Register of Historic Places
Continuation Sheet

Wayne Commercial Historic District

Name of Property

Wayne, Nebraska

County and State

Section 10 Page 31

Bldg ID #	Street #	Street Name	Year Built	Status	Business Listings: Previous and Present
22	100	West 2nd Street	1954	C	McDermott & McDermott Attorneys (1954-Ca. 1984); Law Office Max Kathoccpa
23	104	West 2nd Street	c 1890	C	U.S. Post Office (104) Democrat (108)
24	200	North Main	c 1890	C	First National Bank; Larson Kuhn Clothing; Surber's Ladies Clothing (1973); Jacob's Room
24	202	North Main	c 1890	C	Drs. Crawford & Wightman; D.E. Smith & Co. General Merchandise; John Harrington's Double Front Store General Merchandise; Harrington & Robbins Men's and Boys Clothing; F.E. Gamble Clothing; Barney Stark's Men's Clothing; Larson-Florine Clothing; Surber's Men's Clothing; Jacob's Room
25	204	North Main	c 1915	C	Mines Jewelry
26	206	North Main	c 1890	C	Chase Neely Hardware & Implements; Craven Brothers Hardware; Craven & Welch Hardware; H.B. Craven Hardware; Wayne Shoe Company; Midwest Land Company
27	208	North Main	c 1905	C	Den Sullivan's Grocery; Burce Roosa's Confectionery; H.S. Welch Jeweler; shared building with Roosa; Wayne Bakery; People's Natural Gas; Peterson Therapy Services
28	210	North Main	c 1915	C	Central Meat Market; Jack Denbeck Meat Market; Standard Market Meats; Kagy's; The Shepherdess; Dianne's
29	212	North Main	c 1892	C	I.O. Woolston's Chicago Store General Merchandise; S.R. Theobald, the Racket, Dry Goods; W.A. Hiscos Hardware; Doescher's Hardware (1958-1977); Jeff's Café; Daylight Donuts; Ameriprise Financial
30	214	North Main	c 1892	C	Gable & Lindley Real Estate Office (fire); Farrand & Rundel's Grocery (probably); Ralph Rundel's Basket Store; Clover Farm Grocery; City Grocery; Wayne Book Store Office Equipment (1973-Ca.1976); T&C Electronics/Radio Shack (1979-Ca.1984); U.S. Cellular
31	216	North Main	c 1892	C	P.L. Miller Grocery (fire) P.L. Miller's Star Grocery; Felber's Pharmacy; Don's Better Shoes (x-1970); Wayne Shoe Company (1970-Ca.1984); Keepsake; Copy Write
32	218	North Main	c 1892	C	Dr. Love's Office (fire); B.J. Kass Drugs; Sedgewick Drug; Phil Kohl Drugs; Orth's Drugs; Wayne Beauty Parlor; Hiscos Hardware; H.W. Theobald Store; A & M Sales & Service; Swan McLean Men's Clothing (1953-ca.1984); Rusty Nail (1976); Olds, Pieper & Connolly, Law Office
33	220	North Main	c 1895	C	Andre's Clothing Store (fire); Wilson Brother The Matchless Store (1952); Robert C. Moore Stores; Council Oak Store; Marra Home Improvement (1952-54); Russ Tiedtke; Wayne Federal Savings & Loan (1935-1961); Wayne Vet's Club (1976-)
34	222	North Main	c1900	C	Yankee Taylor Hotel (fire); Wilson Brothers The Matchless Store; General Merchandise; Palace Café (and taproom after prohibition); Firestone Store; Kaup's TV; This & That, Antiques

United States Department of the Interior
National Park ServiceNational Register of Historic Places
Continuation Sheet

Wayne Commercial Historic District

Name of Property

Wayne, Nebraska

County and State

Section 10 Page 32

Bldg ID #	Street #	Street Name	Year Built	Status	Business Listings: Previous and Present
35	109 & 111	West 3rd Street	c 1935	NC	Ill-Martin Ringer Agency (1955-); Printing (109); Northeast Nebraska Insurance Agency Building
36	108	West 3rd Street	c 1925	NC	Creamery; Wayne Area Economic Development
37	300	North Main	1925	C	Little Delmonico Café; The 2 Johns Clothing; Blair & Malloy Clothing; Fred Blair Clothing; Atkins Clothing; Wayne Music Company; Edward Jones Investments
38	304	North Main	c 1925	NC	Safeway Grocery; Viaero Wireless
39	306	North Main	1916	C	Wayne Candy Kitchen, Johnson's Ice Cream Parlor (the Hamburger Hut); Silver Brothers; John's Café; Doescher's Appliances (1976); 1984 photo
40	310	North Main	c 1925	NC	Theater
41	311	North Main	c 1925	C	Wayne Cleaners and Dryers; Grocery Store; Emil Dupsky's Electrical Shop; Willard Wiltse's cabinet shop; USO Club; Swanson TV & Appliance (1967); Midwest Pawn Shop; Refrigeration & Appliance (1976)
42	309	North Main	1915	C	Auto Tire Repairing; Johnson's Bakery; Kugler Electric; Vel's Bakery (ca. 1976)
43	305	North Main	1920	NC	C.A. Berry & Company Grocery; Fitch Grocery; Russell's Grocery; Wayne Fed Saving & Loans (1961-1976); Tom Hansen, Accountants
44	303	North Main	c 1935	NC	First National Insurance Agency (1977-c 1984)
45	301	North Main	1960	NC	First National Bank
46	106	East 3rd Street	-	NE	Parking Lot
47	109	East 3rd Street	-	NC	Bar M
48	223	North Main	1890	NC	Dearborn's Pharmacy; Wayne National Bank; Dr. E.S. Blair (in East end); Rober Caspe, Dentis & F.S. Berry, Attorney; Olds, Swars & Ensz; Harder & Ankeny, Accountants
49	221	North Main	1898	NC	Wayne Drug Co (1898); Griess Rexal Store (1950-1981); Flower Shop (1989-); The Diamond Center
50	219	North Main	1893	NC	Jones Davies Store; Corporate Offices of First Step & R Way
51	217	North Main	c 1895	C	Charley Watson's Furniture & Mortuary; Rob't Utter Books & Music; H. Jones, books; Gable Store; Coast to Coast (1945-Ca. 1976); Jammer Photography
52	215	North Main	c 1925	C	Gambles; Timberline Wood Products; Kid's Closet (1982-Ca.1984); Montgomery Ward Agency & Restful Knights; Wall-to-Wall Decorating; Wayne Martial Arts Center
53	211	North Main	1959	NC	Fanske Jewelry (1909-1964); Dales Jewelry (1964-1978); Diamond Center (1978-ca. 1984); The Coffee Shop on Main
54	207	North Main	c 1905	NC	Wayne Variety Store (1908-1941); Ben Franklin (1941-Ca.1984)

United States Department of the Interior
National Park ServiceNational Register of Historic Places
Continuation Sheet

Wayne Commercial Historic District

Name of Property

Wayne, Nebraska

County and State

Section 10 Page 33

Bldg ID #	Street #	Street Name	Year Built	Status	Business Listings: Previous and Present
55	205	North Main	1932	C	Swan & Kagy Millinery & Ready to Wear (1932-1952); Swan's Clothing; Swan's Women's Apparel (1952-)
56	203	North Main	c 1890	C	E.P. Olmsted & Co.; Carrett & Daily Hardware; Carhart Hardware; L.W. McNatt Hardware (1928-); Bud & JoAnne McNatt Hardware
57	201	North Main	c 1905	C	Hughes * Locke People's Cash Store General Merchandised; Connor, Hughes Co. Store; Maute's Shoes; R.L. Larson's (1922-1945); Larson & Kuhn (1946-1964); Kuhn's Department Store (1965-) 1st Realty
58	108	East 2nd Street	c 1905	NC	Warehouse, Hardware, & Oil; WRHS-HDWR Paint & Oils; Tin Shop; Homestead Homes
59	114	East 2nd Street	c 1935	C	Auto Sales & Service; Mindshaft Mall
60	116	East 2nd Street	c 1915	C	Auto Sales, Repair, Oil House & Filling Station; Mindshaft Mall; Auto Storage
61	118	East 2nd Street	c 1900	C	Livery, Milk Depot (118); Cold Storage (120); Artificial Ice Co.; Snake Jakes (118); Italian Bakery (120)
62	208	North Logan	c1940	NC	
63	211	North Logan	1963	NC	Coryell Auto Oil Co. (1963); Coryell Derby (1984); Gas Station
64	205	North Logan	-	NC	Storage
65	N/A	North Logan	-	NE	Non-Extant
66	N/A	North Logan	-	NE	Non-Extant
67	203	North Logan	1968	NC	Wayne Grain & Feed Mill
68	206	East 2nd Street	1918	C	Farmers Union Cooperative; Grain Elevator; Door Feed Mill (- 1948); Wayne Grain & Feed (1948-C. 1984)
69	200	East 2nd Street	1968	NC	Wayne Grain & Feed; Elevator Office
70	121	North Main	1952	C	Located at site of Boyd Hotel (1892); Coast to Coast; McDonalds (1965-1982); Dollar Store (1982 - present)
71	119	North Main	c 1890	NC	General Store; Hotel; Billiards; Drug Store; Theater; Wayne Eagles Club
72	117	North Main	c 1925	C	Bornhoft Law Office & State Probation Office; Wireless Solutions
73	115	North Main		NE	Empty Lot
74	113	North Main		NE	Empty Lot

United States Department of the Interior
National Park Service

National Register of Historic Places Continuation Sheet

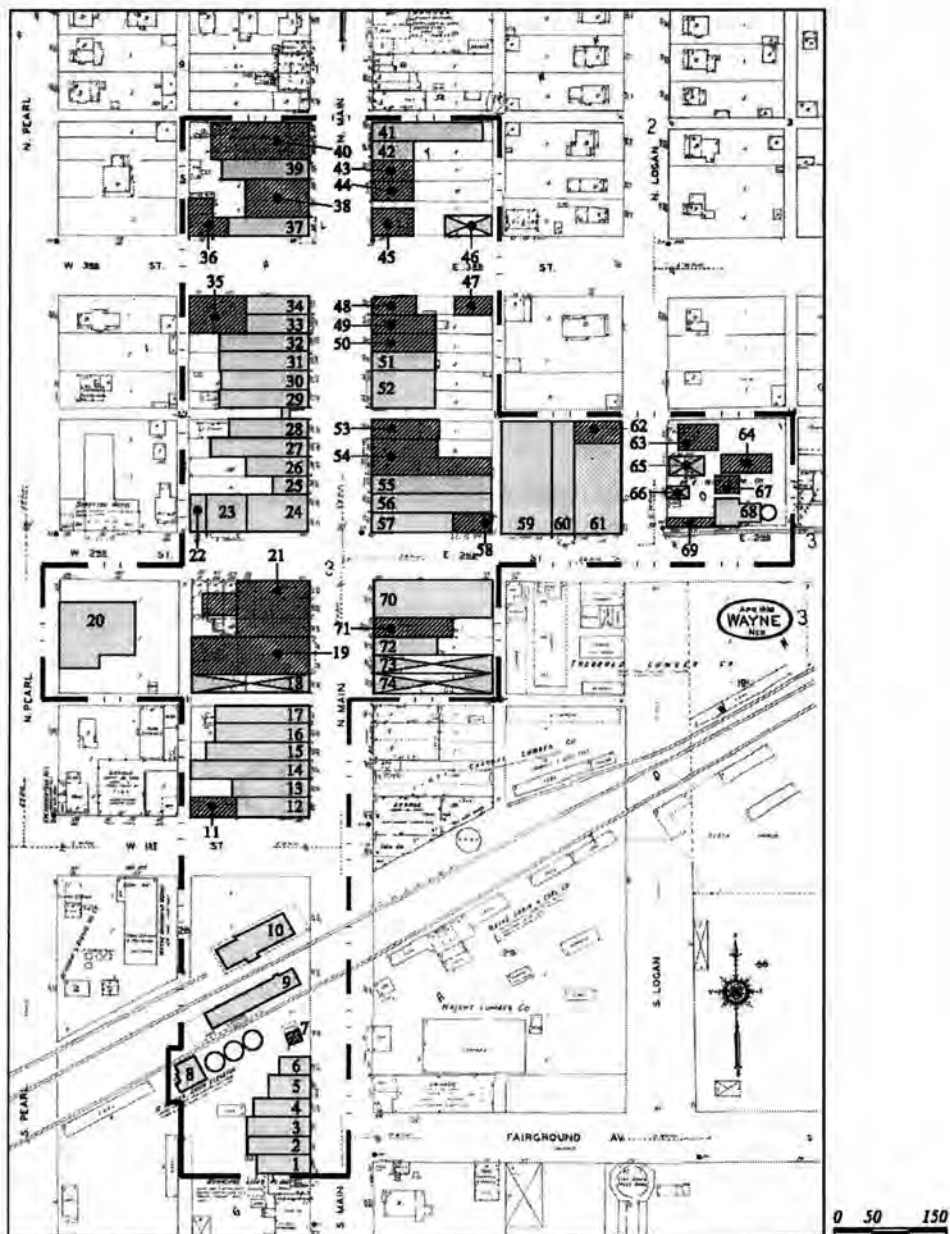
Wayne Commercial Historic District

Name of Property

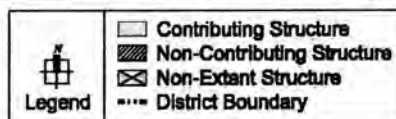
Wayne, Nebraska

County and State

Section 10 Page 34



Commercial
Historic District
Wayne, Nebraska



United States Department of the Interior
National Park Service

National Register of Historic Places
Continuation Sheet

Wayne Commercial Historic District

Name of Property

Wayne, Nebraska

County and State

Section 10 Page 35

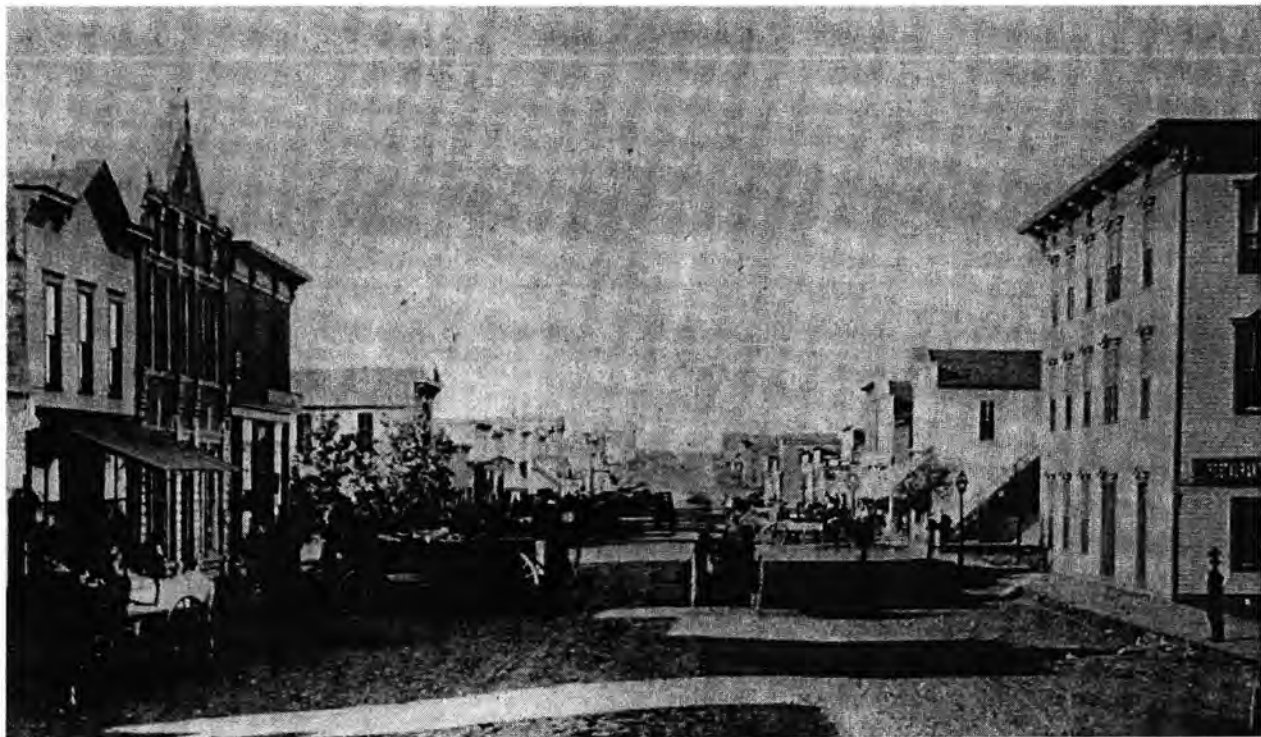


Fig 1: North Main Street looking north from middle of North 100 Block, 1886. The three-story building located on the right-hand side of the photograph is the Boyd Hotel.

The Wayne Herald [Wayne] 28 Aug. 1984, Centennial Souvenir Edition 1884-1994 ed., General History sec.: 4.

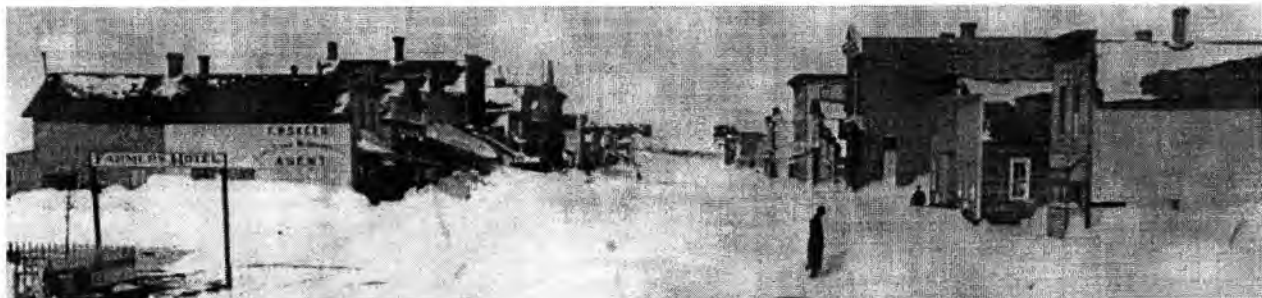


Fig 2: Main Street Looking north after 1886 Blizzard.

The Wayne Herald [Wayne] 26 Feb. 2009, A Celebration of Time sec.: 31.

United States Department of the Interior
National Park Service

**National Register of Historic Places
Continuation Sheet**

Wayne Commercial Historic District

Name of Property

Wayne, Nebraska

County and State

Section 10 Page 36

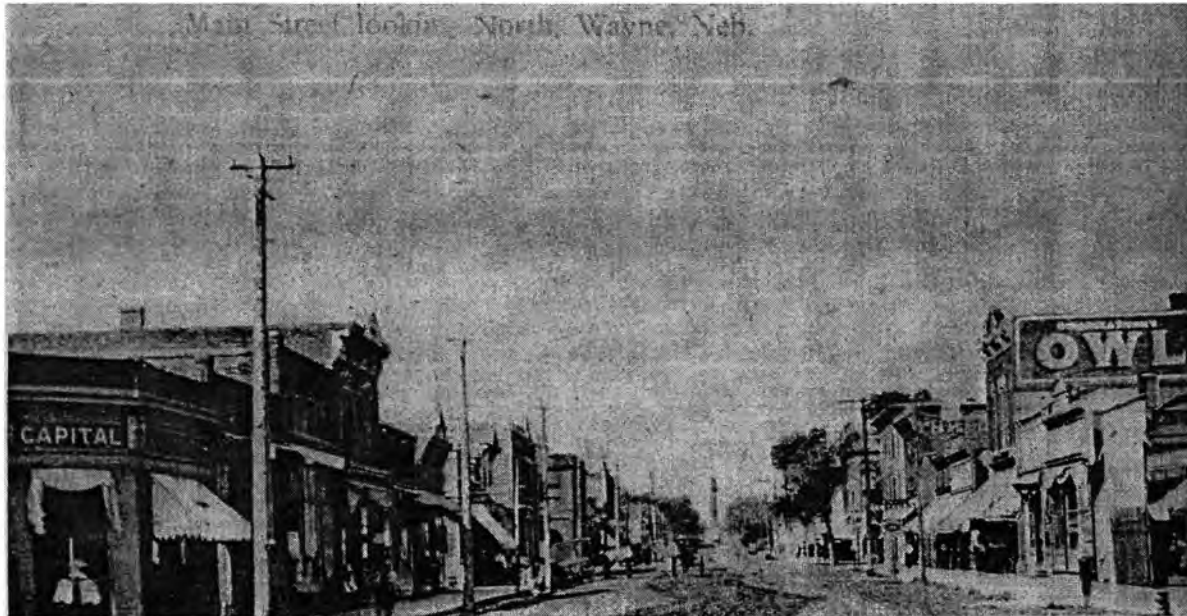


Fig 3: North Main Street Looking North from First Street, 1890. "City Incorporated in 1884."
The Wayne Herald [Wayne] 28 June 1978, Wayne County Souvenir ed.



Fig 4: North End of North 200 Block looking northwest after 1891 Fire.
"Railroad Determined Wayne Site." *The Wayne Herald* [Wayne] 28 June 1978, Wayne County Souvenir ed.

United States Department of the Interior
National Park Service

National Register of Historic Places
Continuation Sheet

Wayne Commercial Historic District

Name of Property

Wayne, Nebraska

County and State

Section 10 Page 37

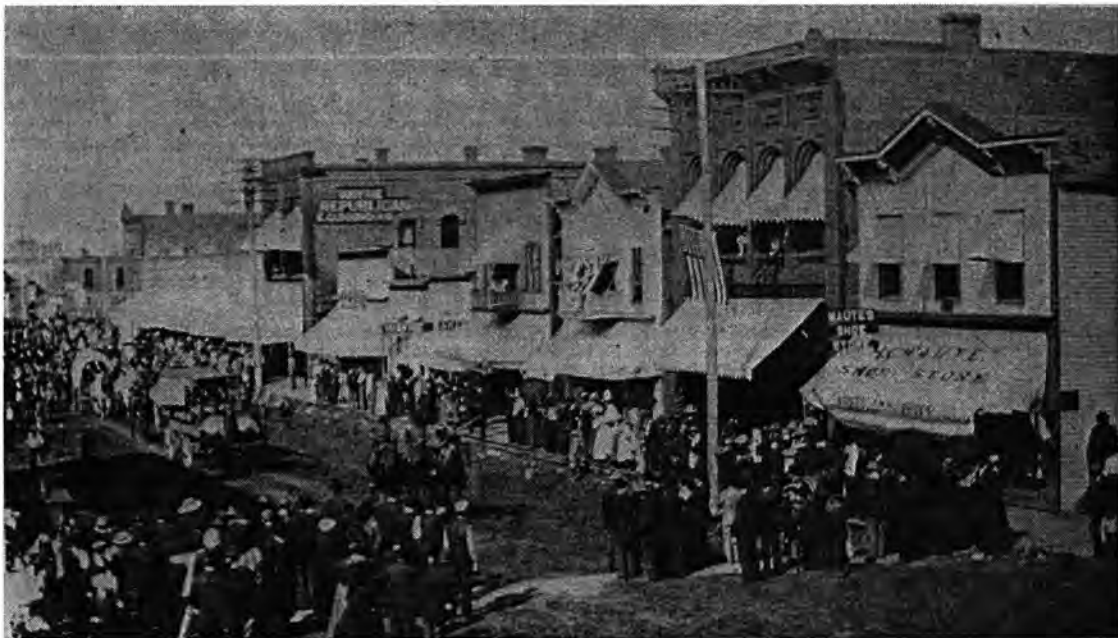


Fig 5: East side of North 200 Block, 1894.
"City Incorporated in 1884." *The Wayne Herald* [Wayne] 28 June 1978, Wayne County Souvenir ed.



Fig 6: 110 South Main, Building Number 9, Freight Depot.
The Wayne Herald [Wayne] 25 Jun. 2009, A Celebration of Time sec.: 28.

United States Department of the Interior
National Park Service

National Register of Historic Places
Continuation Sheet

Wayne Commercial Historic District

Name of Property

Wayne, Nebraska

County and State

Section 10 Page 38



Fig 7: 106 South Main, Building Number 10, Passenger Depot.
The Wayne Herald [Wayne] 25 Jun. 2009, A Celebration of Time sec.: 28.



Fig 8: 100 North Main, Building Number 12, Gem Café, 1949.
"Gem Café." *The Wayne Herald* [Wayne] 28 June 1978, Wayne County Souvenir ed.

United States Department of the Interior
National Park Service

**National Register of Historic Places
Continuation Sheet**

Wayne Commercial Historic District

Name of Property

Wayne, Nebraska

County and State

Section 10 Page 39



Fig 9: 100 North Main, Building Number 12, Interior of Gem's Café, 1949.
"Gem Café." *The Wayne Herald* [Wayne] 28 June 1978, Wayne County Souvenir ed.



Fig 10: 104 North Main, Building Number 14, Piepenstock, 1901.
The Wayne Herald [Wayne] 28 Aug. 1984, Centennial Souvenir Edition 1884-1994 ed., Commerce, Industry & Ag sec.: 11.

United States Department of the Interior
National Park Service

**National Register of Historic Places
Continuation Sheet**

Wayne Commercial Historic District

Name of Property

Wayne, Nebraska

County and State

Section 10 Page 40



Fig 11: 104 North Main, Building Number 14, King's Carpets.
"King's Carpets." *The Wayne Herald* [Wayne] 28 June 1978, Wayne County Souvenir ed.

City Hall, Wayne, Neb.



Fig 12: 115 West 2nd St, Building Number 20, City Hall.
The Wayne Herald [Wayne] 25 Jun. 2009, A Celebration of Time sec.: 27.

United States Department of the Interior
National Park Service

National Register of Historic Places
Continuation Sheet

Wayne Commercial Historic District

Name of Property

Wayne, Nebraska

County and State

Section 10 Page 41



Fig 13: 200 North Main, Building Number 24, Logan Valley Bank, c1885.
The Wayne Herald [Wayne] 30 Apr. 2009, A Celebration of Time sec.: 7.



Fig 14: 200 North Main, Building Number 24, First National Bank, c1890.
The Wayne Herald [Wayne] 30 Apr. 2009, A Celebration of Time sec.: 7.

United States Department of the Interior
National Park Service

National Register of Historic Places
Continuation Sheet

Wayne Commercial Historic District

Name of Property

Wayne, Nebraska

County and State

Section 10 Page 42



Fig 15: 200 North Main, Building Number 24, First National Bank, 1909.
The Wayne Herald [Wayne] 28 Aug. 1984, Centennial Souvenir Edition 1884-1994 ed., Commerce, Industry & Ag sec.: 2.



Fig 16: 309 North Main, Building Number 42, Vel's Bakery, 1976.
"Vel's Bakery." *The Wayne Herald* [Wayne] 28 June 1978, Wayne County Souvenir ed.

United States Department of the Interior
National Park Service

**National Register of Historic Places
Continuation Sheet**

Wayne Commercial Historic District

Name of Property

Wayne, Nebraska

County and State

Section 10 Page 43

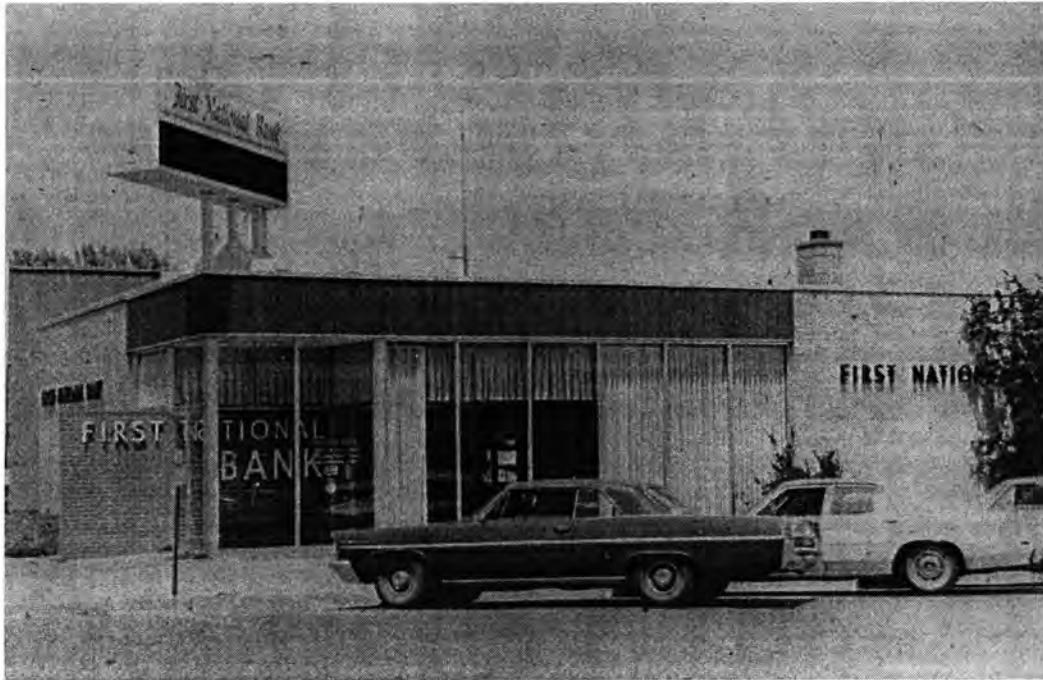


Fig 17: 301 North Main, Building Number 45, First National Bank, c1960.
"First National Bank." *The Wayne Herald* [Wayne] 28 June 1978, Wayne County Souvenir ed.



Fig 18: 205 North Main, Building Number 55, Canopy at Swan's, c1932.
The Wayne Herald [Wayne] 25 Jun. 2009, A Celebration of Time sec.: 7.

United States Department of the Interior
National Park Service

National Register of Historic Places
Continuation Sheet

Wayne Commercial Historic District

Name of Property

Wayne, Nebraska

County and State

Section 10 Page 44



Fig 19: 205 North Main, Building Number 55, Interior of Swan's 1936.
The Wayne Herald [Wayne] 25 Jun. 2009, A Celebration of Time sec.: 7.



Fig 20: 205 North Main, Building Number 55, 1932 building located at 205 North Main, 1976.
"Swan's Apparel for Women." *The Wayne Herald* [Wayne] 28 June 1978, Wayne County Souvenir ed.

United States Department of the Interior
National Park Service

**National Register of Historic Places
Continuation Sheet**

Wayne Commercial Historic District

Name of Property

Wayne, Nebraska

County and State

Section 10 Page 45

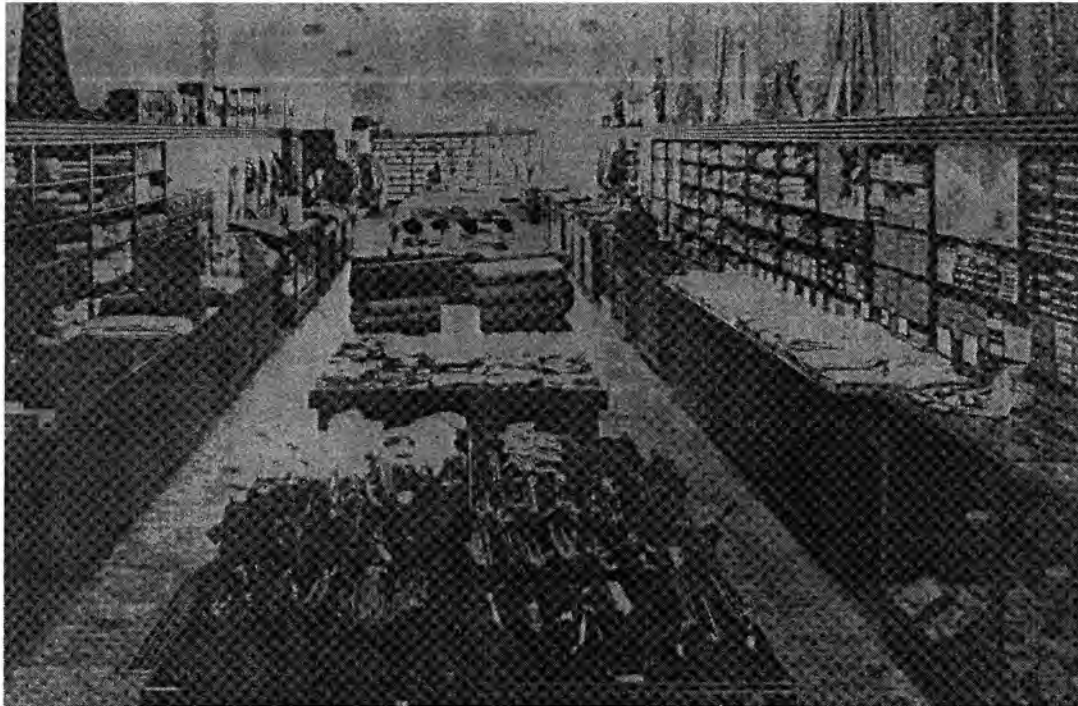


Fig 21: 201 North Main, Building Number 57, Interior of Kuhn's, c1946.
"Kuhn's." *The Wayne Herald* [Wayne] 28 June 1978, Wayne County Souvenir ed.

UNITED STATES DEPARTMENT OF THE INTERIOR
NATIONAL PARK SERVICE

NATIONAL REGISTER OF HISTORIC PLACES
EVALUATION/RETURN SHEET

REQUESTED ACTION: NOMINATION

PROPERTY NAME: Wayne Commercial Historic District

MULTIPLE
NAME:

STATE & COUNTY: NEBRASKA, Wayne

DATE RECEIVED: 10/30/09 DATE OF PENDING LIST: 11/18/09
DATE OF 16TH DAY: 12/03/09 DATE OF 45TH DAY: 12/13/09
DATE OF WEEKLY LIST:

REFERENCE NUMBER: 09001071

REASONS FOR REVIEW:

APPEAL: N DATA PROBLEM: N LANDSCAPE: N LESS THAN 50 YEARS: N
OTHER: N PDIL: N PERIOD: N PROGRAM UNAPPROVED: N
REQUEST: N SAMPLE: N SLR DRAFT: N NATIONAL: N

COMMENT WAIVER: N

☒ ACCEPT ☐ RETURN ☐ REJECT 12-8-09 DATE

ABSTRACT/SUMMARY COMMENTS:

Entered in
The National Register
of
Historic Places

RECOM./CRITERIA _____

REVIEWER _____ DISCIPLINE _____

TELEPHONE _____ DATE _____

DOCUMENTATION see attached comments Y/N see attached SLR Y/N

If a nomination is returned to the nominating authority, the nomination is no longer under consideration by the NPS.



PHOTO 1 OF 34; SOUTH MAIN STREET FROM FIRST STREET, ASPECT: SW, CHRISTINA
JANSEN, APMA, NE WAYNE COUNTY - WAYNE COMMERCIAL DISTRICT - 0001
JULY 1, 2009



PHOTO 2 OF 34; NORTH MAIN STREET FROM FIRST STREET, ASPECT: N,
CHRISTINA JANSEN, APMA NE- WAYNE COUNTY- WAYNE COMMERCIAL
DISTRICT- 0002, JULY 1, 2009



PHOTO 3 OF 34; NORTH MAIN STREET FROM SECOND STREET, ASPECT: S,
CHRISTINA JANSEN, APMA, NE- WAYNE COUNTY, WAYNE COMMERCIAL
DISTRICT- 0003, JULY 1, 2009



PHOTO 4 OF 34 ; NORTH MAIN STREET FROM SECOND STREET, ASPECT: N,
CHRISTINA JANSEN, APMA, NE-WAYNE COUNTY. WAYNE COMMERCIAL
DISTRICT-0004, JULY 1, 2009



PHOTO 5 OF 34; NORTH MAIN STREET FROM MIDDLE OF NORTH 300 BLOCK,
ASPECT : S, CHRISTINA JANSEN, APMA, JULY. 1, 2009, NE-WAYNE
COUNTY - WAYNE COMMERCIAL DISTRICT - 0005



PHOTO 6 OF 34; NORTH MAIN STREET FROM THIRD STREET, ASPECT: SW,
CHRISTINA JANSEN, ARMA, JULY 1, 2009, NE- WAYNE COUNTY -
WAYNE COMMERCIAL DISTRICT- 0006



PHOTO 7 OF 34; EAST SECOND STREET FROM NEBRASKA STREET, ASPECT: NW,
CHRISTINA JANSEN, APMA, JULY 1, 2009, NE - WAYNE COUNTY -
WAYNE COMMERCIAL DISTRICT - 0007



PHOTO 8 OF 34; SECOND STREET FROM MAIN STREET, ASPECT: W,
CHRISTINA JANSEN, APMA, JULY 1, 2009, NE - WAYNE COUNTY - WAYNE
COMMERCIAL DISTRICT - 0008



KENT FARM TO MARKET AG CENTER KENT

LINDNER CONST.
GENERAL CONTRACTOR



PHOTO 9 OF 34; BUILDING NO. 1, ASPECT: SW, JENNIFER
HONEBRINK, APMA, 1/12/09, WAYNE COMMERCIAL DISTRICT,
WAYNE, WAYNE COUNTY, NEBRASKA, NE - WAYNE
COUNTY - WAYNE COMMERCIAL DISTRICT - 0009



PHOTO 10 OF 34; BUILDING NOS. 24, 6, ASPECT: SW,
JENNIFER HONE BRINK, APMA, 1/12/09, WAYNE COMM-
ERCIAL DISTRICT, WAYNE, WAYNE COUNTY, NEBRASKA,
NE - WAYNE COUNTY, WAYNE COMMERCIAL DISTRICT -
0010



PHOTO 11 OF 34; BUILDING NO. 8, ASPECT: S, JENNIFER
HONEBRINK, APMA, 11/12/09, WAYNE COMMERCIAL DIST-
RICT, WAYNE, WAYNE COUNTY, NEBRASKA, NE - WAYNE
COUNTY - WAYNE COMMERCIAL DISTRICT - 0011



Carhart Lumber NO. 4

Midwest
K & M DESIGN KELLY MEYER
CELL PHONE 432-381-2077

PHOTO 120F34; BUILDING NO. 9, ASPECTAN, JENNIFER
HONEBRINK, APMA, 1/12/09, WAYNE COMMERCIAL
DISTRICT, WAYNE, WAYNE COUNTY, NEBRASKA, NE -
WAYNE COUNTY - WAYNE COMMERCIAL DISTRICT -
0012



PHOTO 130F34; BUILDING NO.10, ASPECT:SW, JENNIFER
HONEBRINK, APMA, 1/12/09, WAYNE COMMERCIAL
DISTRICT, WAYNE, WAYNE COUNTY, NEBRASKA, NE-
WAYNE COUNTY - WAYNE COMMERCIAL DISTRICT-
0013



PHOTO 14 OF 34; BUILDING NO: 12, ASPECT: N, JENNIFER
HONEBRINK, APMA, 1/12/09, WAYNE COMMERCIAL
DISTRICT, WAYNE, WAYNE COUNTY, NEBRASKA, NE-
WAYNE COUNTY- WAYNE COMMERCIAL DISTRICT-
0014



WHITE DOG
PUB

IF I COULD
LIFELINE

WHITE DOG PUB
HAPPY BIRTHDAY
LAURA G

DISCOUNT

PHOTO 15 OF 34; BUILDING NO.'S 12, 13, 14, ASPECT: SW. JEN-
NIFER HONEBRINK, APMA, 1/12/09, WAYNE COMMERCIAL
DISTRICT, WAYNE, WAYNE COUNTY, NEBRASKA, NE.
WAYNE COUNTY - WAYNE COMMERCIAL DISTRICT - 0015



1912
CITY HALL

CITY HALL

27-1931

PHOTO 16 OF 34; BUILDING NO. 20, ASPECT: S, JENNIFER
HONEBRINK, APMA, 1/12/09, WAYNE COMMERCIAL DISTRICT
WAYNE, WAYNE COUNTY, NEBRASKA, NE - WAYNE
COUNTY - WAYNE COMMERCIAL DISTRICT - 0016

LAW OFFICES OF
Duane W. Schroeder
Kate M. Jorgensen

110
LAW
OFFICE

27-741

PHOTO 17 of 34, BUILDING NO. 22, ASPECT: N, JENNIFER
HONEBRINK, APMA, 1/12/09, WAYNE COMMERCIAL
DISTRICT, WAYNE, WAYNE COUNTY, NEBRASKA,
NE- WAYNE COUNTY- WAYNE COMMERCIAL
DISTRICT- 0017



PHOTO 18 OF 34; BUILDING NO. 23, ASPECT: N, JENNI-
FER HONEBRINK, APMA, 1/12/09, WAYNE COMMER-
CIAL DISTRICT, WAYNE, WAYNE COUNTY, NEBRASKA,
NE - WAYNE COUNTY - WAYNE COMMERCIAL
DISTRICT - 0018

Main Street

J
C
W

JACOB'S ROOM

From his room to yours...



GOLDSMITH

Mines-

FOR
RENT

PHOTO 19 OF 34; BUILDING NO. 24, ASPECT: SW, JEN-
NIFER HONEBRINK, APMA, 1/12/09, WAYNE COM-
MERCIAL DISTRICT, WAYNE, WAYNE COUNTY,
NEBRASKA, NE- WAYNE COUNTY- WAYNE
COMMERCIAL DISTRICT- 0019

REGULAR
TOOTH
EXTRACTION
\$2.00

DR. ROBERT E.
GORMLEY
DENTIST
University Trained

PAINLESS
TOOTH
EXTRACTION
\$5.00

GOLDSMITH

FINE DIAMONDS

GEMSTONES

Mines

Jewelry

204

FOR
RENT

FOR
RENT



PHOTO 20 OF 34; BUILDING NO. 25, ASPECT: N, JENNIFER
HONEBRINK, APMA, 1/12/09, WAYNE COMMERCIAL
DISTRICT, WAYNE, WAYNE COUNTY, NEBRASKA,
NE_WAYNE COUNTY_WAYNE COMMERCIAL
DISTRICT_0020



Specialty gifts

dianne's

custom designs

PHOTO 21 OF 34; BUILDING NO. 28, ASPECT: W, JENNI-
FER HONEBRINK, APMA, 1/12/09, WAYNE COMMER-
CIAL DISTRICT, WAYNE, WAYNE COUNTY, NEBRASKA
NE-WAYNE COUNTY-WAYNE COMMERCIAL DIST-
RICT_0021




Amesbury
Financial



PHOTO 22 OF 34; BUILDING NO. 29, ASPECT: W, JEN-
NIFER HONEBRINK, APMA, 1/12/09, WAYNE COM-
MERCIAL DISTRICT, WAYNE, WAYNE COUNTY,
NEBRASKA, NE _ WAYNE COUNTY _ WAYNE
COMMERCIAL DISTRICT _ 0022



 U.S. Cellular

FREE
CALLS
TEXTS AND PIX



U.S. Cellular

U.S. Cellular

FREE
CALLS
TEXTS AND PIX

Keepsake

PHOTO 23 OF 34; BUILDING NO. 30, ASPECT: W, JENNIFER
HONEBRINK, APMA, 1/12/09, WAYNE COMMERCIAL
DISTRICT, WAYNE, WAYNE COUNTY, NEBRASKA,
NE_ WAYNE COUNTY - WAYNE COMMERCIAL DISTRICT
- 0023

pers
ERS.COM



★ US Cellular

KEEPSAKE

COPY WRITING

FREE
WIRELESS CALLS
TEXT AND PIN



Keepsake
PHOTOGRAPHY



PHOTO 24 OF 34; BUILDING NOS. 30, 31, ASPECT: SW,
JENNIFER HONEBRINK, APMA, 1/12/09, WAYNE COM-
MERCIAL DISTRICT, WAYNE, WAYNE COUNTY, NEB-
RASKA, NE - WAYNE COUNTY - WAYNE COMMER
CIAL DISTRICT - 0024



P.L. MILLER

S.J. KASS

KEEPSAKE

COPY WRITE

Keepsake

CopyWrite

Faxing • Shipping
Business • Copies • Etc.

CLIP, PIERCE & CONNOLLY
ATTORNEYS AT LAW

PHOTO 25 OF 34; BUILDING NO. 32, ASPECT: SW, JEN-
NIFER HONEBRINK, APMA, 1/12/09, WAYNE COMMER-
CIAL DISTRICT, WAYNE, WAYNE COUNTY, NEBRASKA
NE-WAYNE COUNTY-WAYNE COMMERCIAL DISTRICT-
0025



WAYNE
VETS
CLUB

SUPPORT
OUR
TROOPS

AN
COLL

PHOTO 26 OF 34; BUILDING NO. 33, ASPECT: W, JENNIFER HONEBRINK, APMA, 1/12/09, WAYNE COMMERCIAL DISTRICT, WAYNE, WAYNE COUNTY, NEBRASKA, NE-WAYNE COUNTY-WAYNE COMMERCIAL DISTRICT-0026

MIDWEST **LOANE**
\$ PAWN SHOP \$ **RETAIL**
ELECTRONICS **COMPUTERS**
FIREARMS **JEWELRY**

WE DO
FIREARM
TRANSFERS

OPEN

NO
PARKING
FROM
11:00 AM
TO 5:00 PM



PHOTO 270F34; BUILDING NO. 41, ASPECT: E, JENNI-
FER HONEBRINK, APMA, 1/12/09, WAYNE COMMER-
CIAL DISTRICT, WAYNE, WAYNE COUNTY, NEBRA-
SKA, NE- WAYNE COUNTY, WAYNE COMMER
CIAL DISTRICT - 0027

COFFEE
SHOP

Vel's

BAKERY

DO
EARN
OFFERS

OPEN

305

TOM
Certified P

305 Main Stre

PHOTO 28 OF 34; BUILDING NO. 42, ASPECT: E, JEN-
NIFER HONEBRINK, APMA, 1/12/09, WAYNE COMMER-
CIAL DISTRICT, WAYNE, WAYNE COUNTY, NEBRASKA,
NE - WAYNE COUNTY - WAYNE COMMERCIAL DIST-
RICT - 0028

First National Bank



30

ATM

PHOTO 29 OF 34; BUILDING NO. 45, ASPECT: E, JEN-
NIFER HONEBRINK, APMA, 1/12/09, WAYNE
COMMERCIAL DISTRICT, WAYNE, WAYNE COUNTY,
NEBRASKA, NE - WAYNE COUNTY - WAYNE COM
MERCIAL DISTRICT - 0029

The Diamond Center
Flowers & Wine

Diamonds ♦ Watches ♦ Gifts ♦ Flowers ♦ Wine

22310

OPEN

SUPPORT
OUR
TROOPS

WEAR YOUR
PRIDE

PHOTO 30 OF 34; BUILDING NO. 49, ASPECT: E, JENNIFER
HONEBRINK, APMA, 1/12/09, WAYNE COMMERCIAL
DISTRICT, WAYNE, WAYNE COUNTY, NEBRASKA,
NE - WAYNE COUNTY - WAYNE COMMERCIAL DIST
RICT - 00 30



PHOTO 31 OF 34; BUILDING NOS. 54, 55. ASPECT: E
JENNIFER HONEBRINK, APMA, 1/12/09. WAYNE
COMMERCIAL DISTRICT, WAYNE, WAYNE COUNTY
NEBRASKA, NE - WAYNE COUNTY - WAYNE COM
MERCIALDISTRICT - 0031



PHOTO 32 of 34; BUILDING NOS. 56, 57, ASPECT: E,
JENNIFER HONEBRINK, APMA, 1/12/09, WAYNE,
COMMERCIAL DISTRICT, WAYNE, WAYNE COUN-
TY, NEBRASKA, NE — WAYNE COUNTY — WAYNE
COMMERCIAL DISTRICT — 0032



PHOTO 33 OF 34; BUILDING NOS. 68, ASPECT: NW,
JENNIFER HONEBRINK, APMA, 1/12/09, WAYNE
COMMERCIAL DISTRICT, WAYNE, WAYNE COUNTY,
NEBRASKA, NE - WAYNE COUNTY - WAYNE
COMMERCIAL DISTRICT - 0033



DOLLAR GENERAL
STORES

WINE ALE


Wagner Engines Club
3257

PHOTO 34 OF 34) BUILDING No. 70, ASPECT: SE, JEN-
NIFER HONEBRINK, APMA, 1/12/09, WAYNE COM-
MERCIAL DISTRICT, WAYNE, WAYNE COUNTY,
NEBRASKA, NE- WAYNE COUNTY - WAYNE
COMMERCIAL DISTRICT - 0034

UNITED STATES
DEPARTMENT OF THE INTERIOR
GEOLOGICAL SURVEY

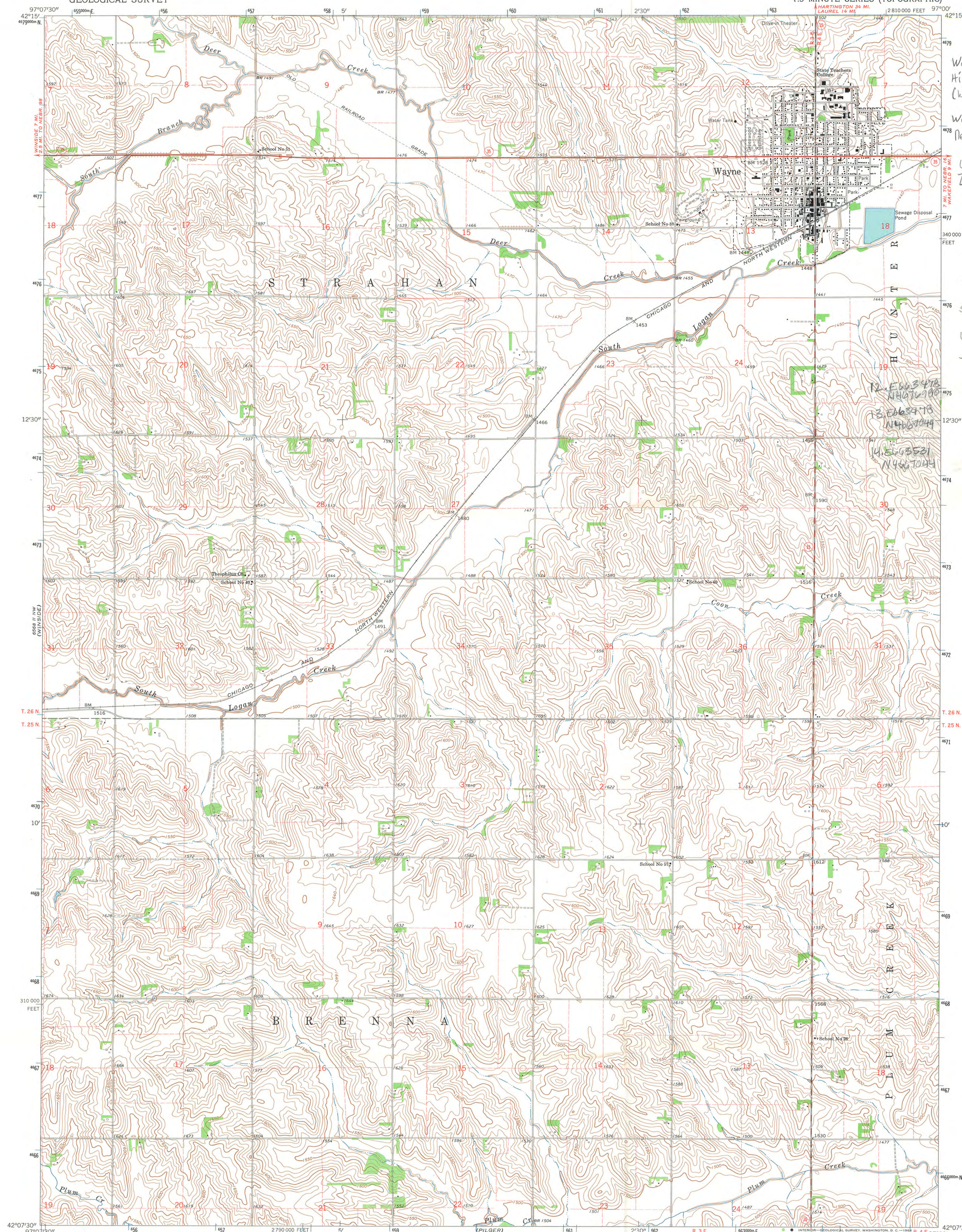
WAYNE QUADRANGLE
NEBRASKA-WAYNE CO.
7.5 MINUTE SERIES (TOPOGRAPHIC)

Wayne Commercial
Historic District
(WY05)

Wayne, Wayne County,
Nebraska

UTM Points:
Zone 14

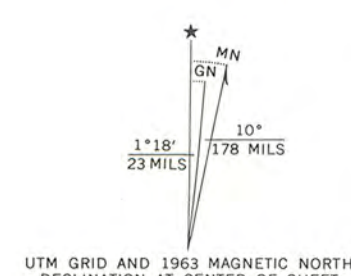
1. E603531
N467703
2. E603602
N467703
3. E603602
N467707
4. E603704
N467707
5. E603704
N467704
6. E603602
N467704
7. E603602
N467700
8. E603595
N467700
9. E603595
N467701
10. E603531
N467701
11. E603531
N467690



Mapped, edited, and published by the Geological Survey
as part of the Department of the Interior program
for the development of the Missouri River Basin
Control by USGS and USC&GS

Topography by photogrammetric methods from aerial
photographs taken 1961. Field checked 1963
Polyconic projection. 1927 North American datum
10,000-foot grid based on Nebraska coordinate system, north zone
1000-meter Universal Transverse Mercator grid ticks,
zone 14, shown in blue

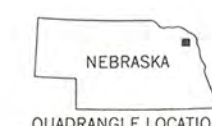
Fine red dashed lines indicate selected fence and field lines where
generally visible on aerial photographs. This information is unchecked



SCALE 1:24 000
1 000 0 1000 2000 3000 4000 5000 6000 7000 FEET
1 KILOMETER
CONTOUR INTERVAL 10 FEET
DATUM IS MEAN SEA LEVEL

THIS MAP COMPLIES WITH NATIONAL MAP ACCURACY STANDARDS
FOR SALE BY U. S. GEOLOGICAL SURVEY, DENVER 25, COLORADO OR WASHINGTON 25, D. C.
A FOLDER DESCRIBING TOPOGRAPHIC MAPS AND SYMBOLS IS AVAILABLE ON REQUEST

ROAD CLASSIFICATION
Heavy-duty ——— Light-duty ———
Medium-duty ——— Unimproved dirt ———
State Route



WAYNE, NEBR.
N4207.5—W9700/7.5

1963

AMS 6568 II NE—SERIES V875

Nebraska
STATE HISTORICAL SOCIETY

October 23, 2009



J. Paul Loether
National Register—National Historic Landmarks Programs
National Park Service
1201 "I" Street NW, 8th Floor
Washington, DC 20005


RE: Wayne Commercial Historic District
Wayne, Wayne County, Nebraska

Dear Mr. Loether:

Please find enclosed the National Register of Historic Places nomination form for the above resource. This form has met all notification and other requirements as established in 36 CFR 60.

If you have any questions concerning this nomination, please let me know.

Sincerely,


L. Robert Puschendorf
Deputy State Historic Preservation Officer

Enclosure

1500 R Street
PO Box 82554
Lincoln, NE 68501-2554
p: (800) 833-6747
(402) 471-3270
f: (402) 471-3100
www.nebraskahistory.org