



Coos Bay Carnegie Library
Coos Bay, Coos County, Oregon

Historic view, c. 1930

Copy negative: *EAST & NORTH FACADES*

Samuels and Clay, Architects
170 So. Second Street, Suite 202
Coos Bay, OR 97420

Photograph No. 1A of 13



COOS ART MUSEUM

1. BUILDING: CARNEGIE LIBRARY
2. LOCATION: COOS BAY, OREGON *COOS COUNTY*
3. PHOTOGRAPHER: STEVE CLAY
4. DATE OF PHOTOGRAPH: AUGUST 1985
5. NEGATIVE LOCATION: SAMUELS & CLAY, ARCHITECTS
170 S. 2ND ST., SUITE 202
COOS BAY, OREGON 97420
6. VIEW DIRECTION: EXTERIOR NORTH ELEVATION
7. PHOTOGRAPH #: *1B OF 13*



1. BUILDING: CARNEGIE LIBRARY
2. LOCATION: COOS BAY, OREGON *COOS COUNTY*
3. PHOTOGRAPHER: STEVE CLAY
4. DATE OF PHOTOGRAPH: AUGUST 1985
5. NEGATIVE LOCATION: SAMUELS & CLAY, ARCHITECTS
170 S. 2ND ST., SUITE 202
COOS BAY, OREGON 97420
6. VIEW DIRECTION: EXTERIOR NORTHEAST CORNER
7. PHOTOGRAPH #: *2 OF 13*



1. BUILDING: CARNEGIE LIBRARY
2. LOCATION: COOS BAY, OREGON, *COOS COUNTY*
3. PHOTOGRAPHER: STEVE CLAY
4. DATE OF PHOTOGRAPH: AUGUST 1985
5. NEGATIVE LOCATION: SAMUELS & CLAY, ARCHITECTS
170 S. 2ND ST., SUITE 202
COOS BAY, OREGON 97420
6. VIEW DIRECTION: EXTERIOR SOUTHEAST CORNER
7. PHOTOGRAPH #: *3 OF 13*



1. BUILDING: CARNEGIE LIBRARY
2. LOCATION: COOS BAY, OREGON *COOS COUNTY*
3. PHOTOGRAPHER: STEVE CLAY
4. DATE OF PHOTOGRAPH: AUGUST 1985
5. NEGATIVE LOCATION: SAMUELS & CLAY, ARCHITECTS
170 S. 2ND ST., SUITE 202
COOS BAY, OREGON 97420
6. VIEW DIRECTION: EXTERIOR SOUTH ELEVATION
7. PHOTOGRAPH #: 4 *OF 13*



1. BUILDING: CARNEGIE LIBRARY
2. LOCATION: COOS BAY, OREGON *COOS COUNTY*
3. PHOTOGRAPHER: STEVE CLAY
4. DATE OF PHOTOGRAPH: AUGUST 1985
5. NEGATIVE LOCATION: SAMUELS & CLAY, ARCHITECTS
170 S. 2ND ST., SUITE 202
COOS BAY, OREGON 97420
6. VIEW DIRECTION: EXTERIOR NORTHWEST CORNER
7. PHOTOGRAPH #: 5 *01-13*

THE AGNES R. SENGSTACKEN
CHILDREN'S READING ROOM



1. BUILDING: CARNEGIE LIBRARY
2. LOCATION: COOS BAY, OREGON *COOS COUNTY*
3. PHOTOGRAPHER: STEVE CLAY
4. DATE OF PHOTOGRAPH: AUGUST 1985
5. NEGATIVE LOCATION: SAMUELS & CLAY, ARCHITECTS
170 S. 2ND ST., SUITE 202
COOS BAY, OREGON 97420
6. VIEW DIRECTION: DEDICATION PLAQUE TO
LIBRARY'S FOUNDER
NORTH ELEVATION
7. PHOTOGRAPH #: *6 0713*



1. BUILDING: CARNEGIE LIBRARY
2. LOCATION: COOS BAY, OREGON *COOS COUNTY*
3. PHOTOGRAPHER: STEVE CLAY
4. DATE OF PHOTOGRAPH: AUGUST 1985
5. NEGATIVE LOCATION: SAMUELS & CLAY, ARCHITECTS
170 S. 2ND ST., SUITE 202
COOS BAY, OREGON 97420
6. VIEW DIRECTION: EXTERIOR FRONT ENTRY DOOR
7. PHOTOGRAPH #: *7 OF 13*



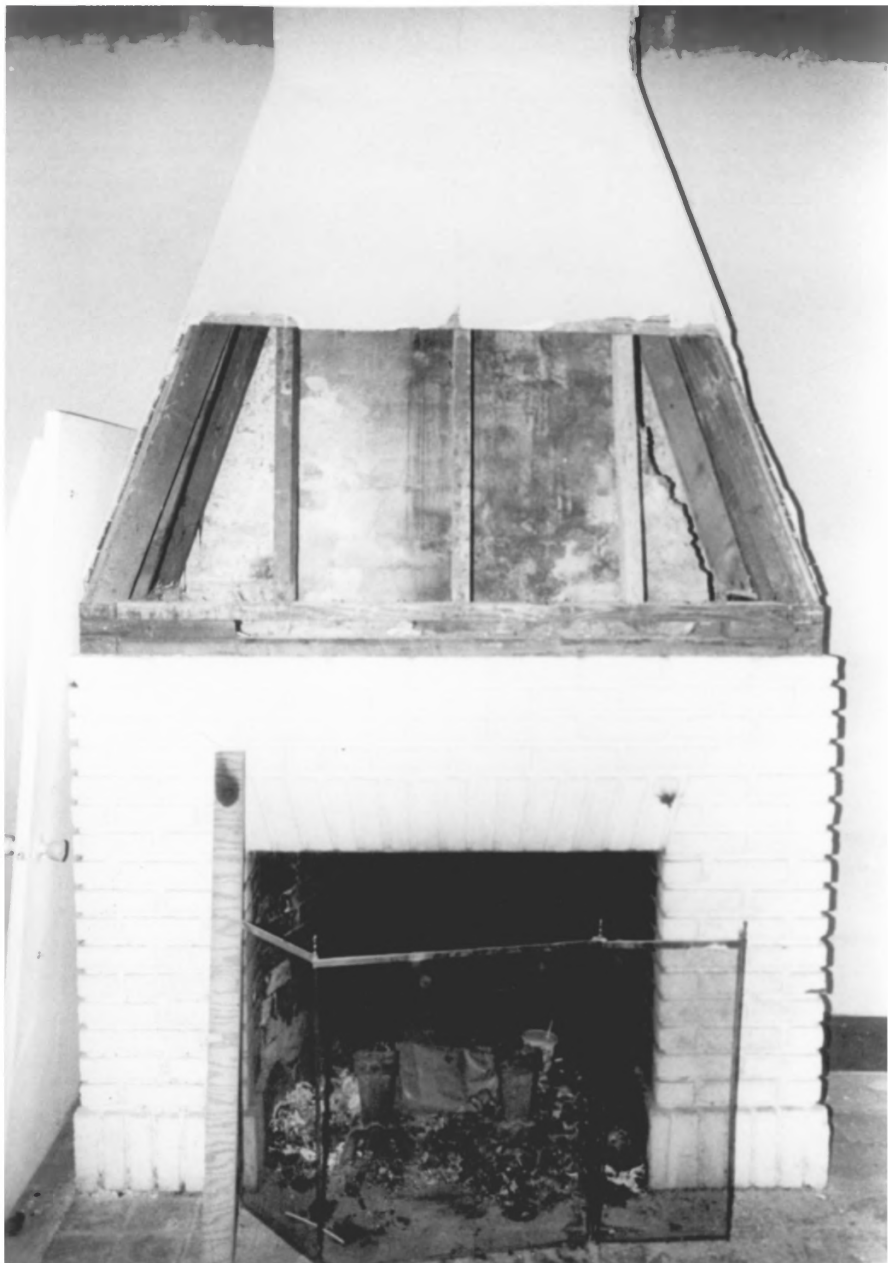
1. BUILDING: CARNEGIE LIBRARY
2. LOCATION: COOS BAY, OREGON *COOS COUNTY*
3. PHOTOGRAPHER: STEVE CLAY
4. DATE OF PHOTOGRAPH: AUGUST 1985
5. NEGATIVE LOCATION: SAMUELS & CLAY, ARCHITECTS
170 S. 2ND ST., SUITE 202
COOS BAY, OREGON 97420
6. VIEW DIRECTION: INTERIOR BACKSIDE FRONT
ENTRY DOOR
7. PHOTOGRAPH #: 8 *OF 13*



1. BUILDING: CARNEGIE LIBRARY
2. LOCATION: COOS BAY, OREGON *COOS COUNTY*
3. PHOTOGRAPHER: STEVE CLAY
4. DATE OF PHOTOGRAPH: AUGUST 1985
5. NEGATIVE LOCATION: SAMUELS & CLAY, ARCHITECTS
170 S. 2ND ST., SUITE 202
COOS BAY, OREGON 97420
6. VIEW DIRECTION: NORTHEAST INTERIOR UPSTAIRS
CORNER
7. PHOTOGRAPH #: *9 OF 13*



1. BUILDING: CARNEGIE LIBRARY
2. LOCATION: COOS BAY, OREGON, *COOS COUNTY*
3. PHOTOGRAPHER: STEVE CLAY
4. DATE OF PHOTOGRAPH: AUGUST 1985
5. NEGATIVE LOCATION: SAMUELS & CLAY, ARCHITECTS
170 S. 2ND ST., SUITE 202
COOS BAY, OREGON 97420
6. VIEW DIRECTION: NORTHWEST INTERIOR UPSTAIRS
CORNER
7. PHOTOGRAPH #: *10 OF 13*



1. BUILDING: CARNEGIE LIBRARY
2. LOCATION: COOS BAY, OREGON *COOS COUNTY*
3. PHOTOGRAPHER: STEVE CLAY
4. DATE OF PHOTOGRAPH: AUGUST 1985
5. NEGATIVE LOCATION: SAMUELS & CLAY, ARCHITECTS
170 S. 2ND ST., SUITE 202
COOS BAY, OREGON 97420
6. VIEW DIRECTION: FIREPLACE ELEVATION
7. PHOTOGRAPH #: *11 OF 13*



1. BUILDING: CARNEGIE LIBRARY
2. LOCATION: COOS BAY, OREGON *COOS county*
3. PHOTOGRAPHER: STEVE CLAY
4. DATE OF PHOTOGRAPH: AUGUST 1985
5. NEGATIVE LOCATION: SAMUELS & CLAY, ARCHITECTS
170 S. 2ND ST., SUITE 202
COOS BAY, OREGON 97420
6. VIEW DIRECTION: BASEMENT NORTHEAST INTERIOR
CORNER
7. PHOTOGRAPH #: 12 *01-13*



1. BUILDING: CARNEGIE LIBRARY
2. LOCATION: COOS BAY, OREGON *COOS COUNTY*
3. PHOTOGRAPHER: STEVE CLAY
4. DATE OF PHOTOGRAPH: AUGUST 1985
5. NEGATIVE LOCATION: SAMUELS & CLAY, ARCHITECTS
170 S. 2ND ST., SUITE 202
COOS BAY, OREGON 97420
6. VIEW DIRECTION: BASEMENT SOUTHEAST INTERIOR
CORNER
7. PHOTOGRAPH #: 13 *OF 13*