



UNITED STATES DEPARTMENT OF THE INTERIOR
NATIONAL PARK SERVICE

NATIONAL REGISTER OF HISTORIC PLACES
PROPERTY PHOTOGRAPH FORM

(Type all entries - attach to or enclose with photograph)

STATE	
Mississippi	
COUNTY	
Holmes	
FOR NPS USE ONLY	
ENTRY NUMBER	DATE
70.11.28.0014	11/10/70

1. NAME

COMMON: Rob Morris Little Red Schoolhouse, O.E.S. Shrine

AND/OR HISTORIC: Eureka Masonic College

2. LOCATION

STREET AND NUMBER:

CITY OR TOWN: Approximately 4.5 miles north on Miss. 17,
Richland Community - off U. S. 51.

STATE:	CODE	COUNTY:	CODE
Mississippi	23	Holmes	051

3. PHOTO REFERENCE

PHOTO CREDIT: Hiatt-Ford, Jackson, Mississippi

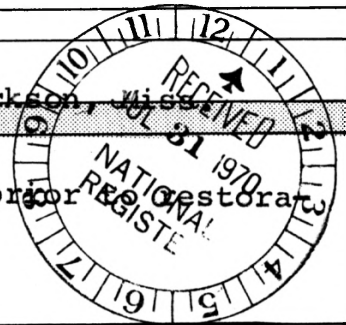
DATE OF PHOTO: 1962

NEGATIVE FILED AT:
Miss. Department of Archives and History, Jackson, Mississippi

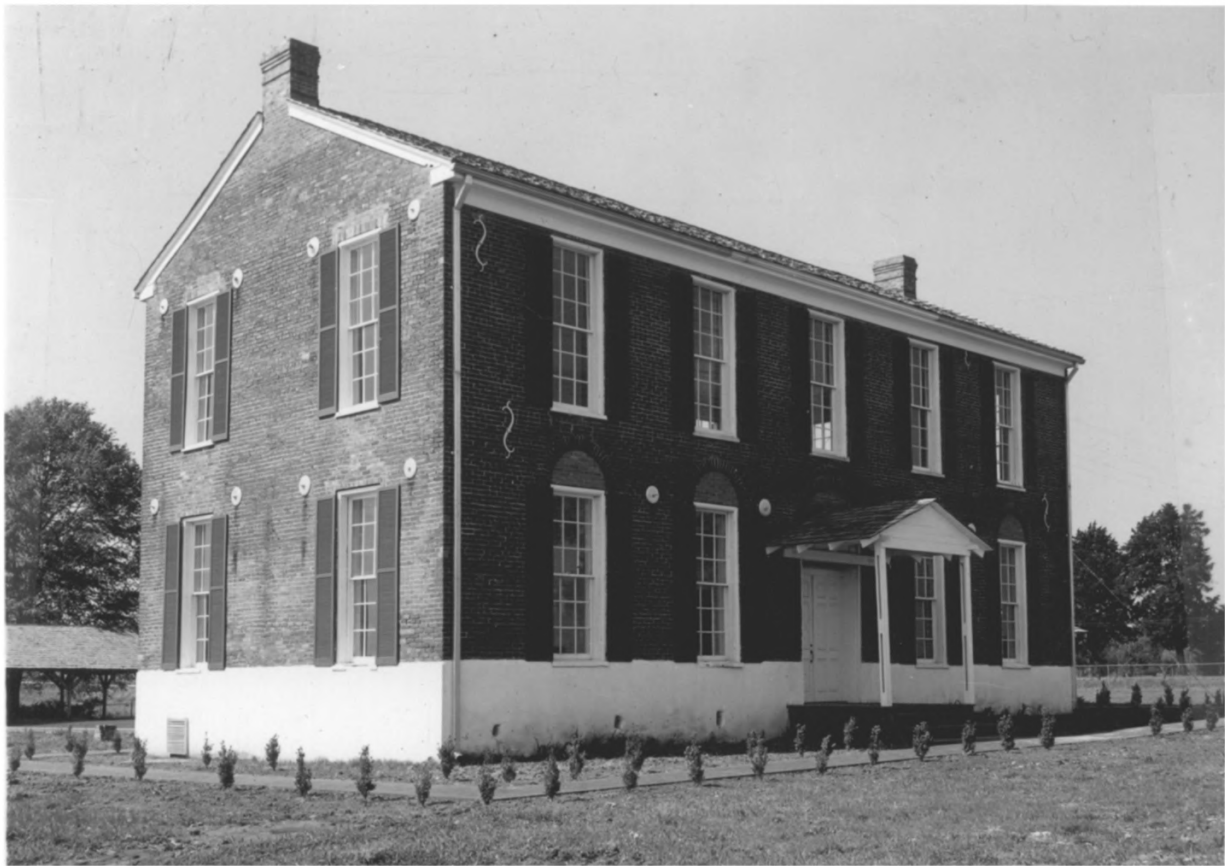
4. IDENTIFICATION

DESCRIBE VIEW, DIRECTION, ETC.

① Rob Morris Little Red Schoolhouse exterior, prior restoration from the northwest.



SEE INSTRUCTIONS



UNITED STATES DEPARTMENT OF THE INTERIOR
NATIONAL PARK SERVICE

NATIONAL REGISTER OF HISTORIC PLACES

PROPERTY PHOTOGRAPH FORM

(Type all entries - attach to or enclose with photograph)

STATE	
Mississippi	
COUNTY	
Holmes	
FOR NPS USE ONLY	
ENTRY NUMBER	DATE
70.11.28.0014	11/10/70

SEE INSTRUCTIONS

1. NAME			
COMMON: Rob Morris Little Red Schoolhouse, O.E.S. Shrine			
AND/OR HISTORIC: Eureka Masonic College			
2. LOCATION			
STREET AND NUMBER:			
CITY OR TOWN: Approximately 4.5 miles north on Miss. 17, Richland Community - off U. S. 51.			
STATE:	CODE	COUNTY:	CODE
Mississippi	23	Holmes	051
3. PHOTO REFERENCE			
PHOTO CREDIT: Mississippi State Highway Department			
DATE OF PHOTO: 1968			
NEGATIVE FILED AT:			
Miss. Department of Archives and History, Jackson, Miss.			
4. IDENTIFICATION			
DESCRIBE VIEW, DIRECTION, ETC.			
② Rob Morris Little Red Schoolhouse exterior from the northeast			

