

United States Department of the Interior
National Park Service

National Register of Historic Places Registration Form



This form is for use in nominating or requesting determinations for individual properties and districts. See instructions in National Register Bulletin, *How to Complete the National Register of Historic Places Registration Form*. If any item does not apply to the property being documented, enter "N/A" for "not applicable." For functions, architectural classification, materials, and areas of significance, enter only categories and subcategories from the instructions. Place additional certification comments, entries, and narrative items on continuation sheets if needed (NPS Form 10-900a).

1. Name of Property

historic name Alta Vista Cemetery

other names/site number _____

2. Location

street & number 521 Jones Street

☐ not for publication

city or town Gainesville

☐ vicinity

state Georgia

code GA

county Hall

code 139

zip code 30501

3. State/Federal Agency Certification

As the designated authority under the National Historic Preservation Act, as amended,

I hereby certify that this X nomination request for determination of eligibility meets the documentation standards for registering properties in the National Register of Historic Places and meets the procedural and professional requirements set forth in 36 CFR Part 60.

In my opinion, the property X meets does not meet the National Register Criteria. I recommend that this property be considered significant at the following level(s) of significance:

national statewide X local

David C. Crass

5 JUL 12

Signature of certifying official/Title

Date

Dr. David C. Crass/Historic Preservation Division Director/Deputy SHPO
Historic Preservation Division, Georgia Dept. of Natural Resources

GA DNR - HISTORIC PRESERVATION
State or Federal agency/bureau or Tribal Government

In my opinion, the property meets does not meet the National Register criteria.

Signature of commenting official

Date

Title

State or Federal agency/bureau or Tribal Government

4. National Park Service Certification

I hereby certify that this property is:

entered in the National Register

determined eligible for the National Register

determined not eligible for the National Register

removed from the National Register

other (explain):

Don Deane
Signature of the Keeper

8/28/12
Date of Action

Alta Vista Cemetery
Name of Property

Hall County, Georgia
County and State

5. Classification

Ownership of Property (Check as many boxes as apply.)

<input type="checkbox"/>	private
<input checked="" type="checkbox"/>	public - Local
<input type="checkbox"/>	public - State
<input type="checkbox"/>	public - Federal

Category of Property (Check only one box.)

<input type="checkbox"/>	building(s)
<input checked="" type="checkbox"/>	district
<input type="checkbox"/>	site
<input type="checkbox"/>	structure
<input type="checkbox"/>	object

Number of Resources within Property (Do not include previously listed resources in the count.)

Contributing	Noncontributing	
1	0	buildings
1	0	sites
3	0	structures
1	0	objects
6	0	Total

Name of related multiple property listing (Enter "N/A" if property is not part of a multiple property listing)

N/A

Number of contributing resources previously listed in the National Register

N/A

6. Function or Use

Historic Functions (Enter categories from instructions.)

Funerary: cemetery

Current Functions (Enter categories from instructions.)

Funerary: cemetery

7. Description

Architectural Classification (Enter categories from instructions.)

N/A

Materials (Enter categories from instructions.)

foundation: Concrete, Brick

walls: Stone: marble, Brick

roof: Stone: marble, brick, Asphalt

other: Metal: cast-iron, Stone: granite

Alta Vista Cemetery
Name of Property

Hall County, Georgia
County and State

Narrative Description

(Describe the historic and current physical appearance of the property. Explain contributing and noncontributing resources if necessary. Begin with a **summary paragraph** that briefly describes the general characteristics of the property, such as its location, setting, size, and significant features.)

Summary Paragraph

Alta Vista Cemetery is a large, sprawling municipal cemetery located southwest of downtown Gainesville in Hall County in northeast Georgia. The park-like cemetery features rolling hills and expanses of grass-covered lawns, which are shaded in places with cedar, magnolia, and oak trees. The plan is laid out in large blocks, which are subdivided into small rectangular-shaped family plots. Many of the family plots are delineated by low stone borders, walls, and iron fences. Blocks 1-12 were part of the original land purchase for the cemetery in 1872 and contain some of the oldest burials. The African-American section includes marked and unmarked graves. The cemetery includes separate potter's fields for white and black unmarked burials. Blocks 1N-4N along Shallowford Road were opened in the 1920s and laid out with family plots. Blocks A, B, and C, on the east side, opened in the early 1950s, comprise continuous rows of granite markers without delineated family plots. Grave markers throughout the cemetery, made of granite, and cement, include flat headstones and decorative monuments, such as obelisks. Unusual markers include circus-performer Maude Mooney's marker, which depicts her twirling as "Mademoiselle Vortex," and the B. P. Byro marker, which depicts a railroad locomotive to signify Byro's membership in the Brotherhood of Locomotive Engineers. Alta Vista features several mausoleums, including the Art Deco-style Pratt-Barrett mausoleum. The cemetery office building was built in 1964.

Narrative Description

Alta Vista Cemetery is the main municipal cemetery serving Gainesville and Hall County, Georgia. Alta Vista was established on 9.25 acres in 1872 and features mostly rows of family plots and individual burials (photos 1-7). The next year, Nazareth Church cemetery burials were relocated to Alta Vista. In 1877, property was added to provide an African American burial section (photos 25-27). In 1965, the private Woodlawn Cemetery, which was adjacent to Alta Vista, was acquired. The Woodlawn property added approximately 530 graves, with its earliest recorded grave dated 1910. In the mid-1950s, the creation of nearby Lake Lanier, among the largest lakes in the state, resulted in the relocation of numerous burials to Alta Vista. Alta Vista includes approximately 14,000 marked and unmarked burials on 80 acres. This nomination to the National Register includes approximately 35 acres.

The cemetery, which is surrounded by a metal fence supported by granite columns, is entered at 1080 Jesse Jewell Parkway (photo 1). The main entrance provides access to 3rd Street in the oldest section of the cemetery. Seven avenues run northwest-to-southeast and seven streets run southwest-to-northeast. Alta Vista Road and Shallowford Road are the only named streets within the cemetery. The terrain of Alta Vista varies from rolling hills to relatively flat areas (photos 13, 23, 34). The cemetery is organized in large blocks, many of which are subdivided into family plots. The park-like grounds are interspersed with mature oak, magnolia, cedar, pecan, dogwood, holly, crepe myrtle, ginkgo, pine, and poplar trees (photos 2, 9, 13, 20). The cemetery is bounded on the west by West End Avenue, John Morrow Parkway on the east, Jesse Jewell Parkway on the south, and on the north by residential and light industrial development.

The rows of burials are mostly laid out in a grid. Blocks 1 through 3, located at the north end of Third Street, were established in the 1870s and are the oldest sections of the cemetery with the earliest burial dating to 1872. Family plots are lined with brick, stone, and concrete coping (photos 15-17). Several are defined by cast-iron fences, including one in Block 5 marked "Stewart Iron Works Company," a manufacturer from Cincinnati, Ohio (photo 9-10). The Reeves family plot in the Woodlawn section is limned by a reinforced-concrete fence (photo 38).

The cemetery includes a variety of funerary monuments, including flat-slab markers, decorative upright markers, obelisks, and mausoleums. Some of the monuments are sculpted marble, including the Estes Monument, (photo 14); others are granite (photos 6-7). Early monuments in Alta Vista were cut from Vermont marble, but after 1885, most monuments were constructed from white Georgia marble. Several markers are cut from pink marble, which, in Georgia, derive only from quarries in Tate in Pickens County. In the 1950s, granite from Elberton, Georgia, often highly polished, became popular and can be seen in Blocks A, B, and C in Alta Vista Cemetery (photos 23-24). Two monuments are made of zinc, a blue-gray metal that resists corrosion (photos 11-29). Zinc monuments were manufactured by the Monumental Bronze Company of Bridgeport, Connecticut, from 1874-1914.

Alta Vista Cemetery

Name of Property

Hall County, Georgia

County and State

Many of the monuments in Alta Vista reflect imagery that was common in American cemeteries in the late 19th and early 20th centuries to represent mourning, loss, and grief. These include obelisks, especially broken or shrouded obelisks, which symbolize the brevity of life (photos 9 and 25). The cemetery includes Woodmen of the World monuments in the form of tree stumps, which represent the pioneer woodsmen that founded that fraternal organization (photos 36-37). Lambs atop grave markers signify the death of a child (photo 4, 39); markers that include the form of books represent wisdom (photo 7, 17); and open gates signify entrance to heaven (photo 39). Some markers feature hands with an index finger pointing upwards, which signifies the hope of heaven, while others feature a hand reaching downward plucking a broken link in a chain to represent God bringing a soul to heaven (photo 27). Angels, which often represent grief, are a common motif in both historic (photo 19, left) and nonhistoric (photo 33) monuments.

Alta Vista Cemetery includes a Daughters of the American Revolution marker to memorialize soldiers that fought in the American Revolution (photo 2), a marker dedicated to the American Legion, and a marker dedicated to the unknown dead that were killed in a 1936 tornado in Gainesville (photo 30). The cemetery also includes the burials of persons important in American history and in the history of Georgia: Lieutenant General James Longstreet (photos 21-22), Georgia Congressman Thomas Montgomery Bell (photo 8), Georgia Governors James Milton Smith (photo 17), and Allen B. Candler. The cemetery includes figures important in Gainesville's history including the city's first mayor, William Pugh Smith; Jesse Jewell, who is credited with making Gainesville the "poultry capital of the world;" and Emmett E. Butler, a prominent African-American physician (photo 26). Unusual markers include circus-performer Maude Mooney's marker, which depicts her twirling as "Mademoiselle Vortex" (photo 32), and the B. P. Byro marker, which depicts a railroad locomotive to signify Byro's membership in the Brotherhood of Locomotive Engineers, a fraternal, mutual benefit society of railway workers (photo 40).

The cemetery includes several mausoleums, including the Pruitt-Barrett mausoleum and the Boring-Keorber mausoleum, both Art-Deco-style structures built of white marble (photos 5, 6). Block 5 contains a brick mausoleum with a vaulted brick roof (photo 16, right).

Alta Vista includes white and black potter's fields, also called "free ground," for indigent city and county burials. The white potter's field is a sloping hill in Block 8 (photo 13). A few marked graves are located at the edges along 2nd Avenue and 2nd Street. The African-American potter's field is located at the north end of the cemetery between 5th and 7th avenues. It includes unmarked burials on a wooded and open, sloping site (photos 25, 27). Marked African-American burials are located in the northwest corner of the cemetery, west of 7th Avenue (photo 26).

The cemetery office, built in 1964, is located on Jones Road (photo 42). It is a one-story brick building with a low-pitched hip roof and clerestory windows on the front and sides. The main entrance includes sidelights.

Contributing and Noncontributing Resources

Alta Vista cemetery is a historic district in which the overall landscape design, including roadway and landscape features, is counted as one site. The office, built in 1964, is counted as one contributing building and the three mausoleums are counted as three contributing structures. The grave markers, which have not been systematically inventoried, are counted collectively as one contributing object.

Alta Vista Cemetery
Name of Property

Hall County, Georgia
County and State

8. Statement of Significance

Applicable National Register Criteria

(Mark "x" in one or more boxes for the criteria qualifying the property for National Register listing.)

- ☒ A Property is associated with events that have made a significant contribution to the broad patterns of our history.
- ☐ B Property is associated with the lives of persons significant in our past.
- ☒ C Property embodies the distinctive characteristics of a type, period, or method of construction or represents the work of a master, or possesses high artistic values, or represents a significant and distinguishable entity whose components lack individual distinction.
- ☐ D Property has yielded, or is likely to yield, information important in prehistory or history.

Criteria Considerations

(Mark "x" in all the boxes that apply.)

Property is:

- ☐ A Owned by a religious institution or used for religious purposes.
- ☐ B removed from its original location.
- ☐ C a birthplace or grave.
- ☒ D a cemetery.
- ☐ E a reconstructed building, object, or structure.
- ☐ F a commemorative property.
- ☐ G less than 50 years old or achieving significance within the past 50 years.

Areas of Significance

(Enter categories from instructions.)

Architecture

Art

Community Planning and Development

Social History and Ethnic Heritage: Black

Landscape Architecture

Period of Significance

1872-1965

Significant Dates

1872 – Gainesville established Alta Vista Cemetery

1964 – Cemetery office built

1965 – Woodlawn Cemetery added to Alta Vista

Significant Person

(Complete only if Criterion B is marked above.)

Cultural Affiliation

N/A

Architect/Builder

N/A

Period of Significance (justification)

The period of significance begins in 1872, when the city of Gainesville established Alta Vista Cemetery, and ends in 1965, when the Woodlawn Cemetery was added to Alta Vista Cemetery.

Alta Vista Cemetery
Name of Property

Hall County, Georgia
County and State

Criteria Considerations (explanation, if necessary)

Alta Vista Cemetery meets National Register Criterion Consideration D because it derives its primary significance from its distinctive funerary markers and from historic events associated with its establishment as the main municipal cemetery for the city of Gainesville and Hall County in the 19th and 20th centuries.

Statement of Significance Summary Paragraph (Provide a summary paragraph that includes level of significance and applicable criteria.)

Alta Vista Cemetery is significant at the local level under National Register Criteria A and C in the areas of art and architecture because the numerous forms of burial monuments reflect funerary traditions from the late 19th century to 1965. Architectural styles, such as Gothic Revival, High Victorian Gothic, and Art Deco, appear in many of the mausoleums, obelisks, headstones, and other markers. Some of the early monuments feature imagery associated with mourning, such as shrouded obelisks and tree stumps. Later markers, such as the Woodmen of the World monuments, were standardized designs. The cemetery is significant in the area of landscape architecture because its plan is characteristic of park-like municipal cemeteries established in Georgia in the late 19th century. These cemeteries feature grids of streets and family plots shaded by picturesque plantings of trees and shrubs. The cemetery is significant in the area of community planning and development because it represents the city's efforts to provide a public cemetery as an alternative to the privately owned cemeteries on farms and in churchyards. The cemetery is also significant in the area of black ethnic heritage because it includes a segregated section for African-American burials. Alta Vista Cemetery meets National Register Criterion Consideration D because it derives its primary significance from its distinctive funerary markers and from historic events associated with its establishment as the main municipal cemetery for the city of Gainesville and Hall County in the 19th and 20th centuries.

Narrative Statement of Significance (Provide at least **one** paragraph for each area of significance.)

Alta Vista Cemetery is the main municipal cemetery for Gainesville and Hall County in northeast Georgia. Located southwest of downtown Gainesville, the park-like cemetery features rolling hills and expanses of grass-covered lawns, which are shaded in places with cedar, magnolia, oak, and other trees. The plan is laid out in large blocks, which are subdivided into small rectangular-shaped family plots. Later sections, which opened in the 1950s, eliminated family plots in favor of ease of maintenance.

Alta Vista Cemetery is significant in the areas of art and architecture because the numerous forms of burial monuments reflect funerary traditions from the late 19th century to 1965. Architectural styles, such as Gothic Revival, High Victorian Gothic, and Art Deco, appear in many of the mausoleums, obelisks, headstones, and other markers. Some of the early monuments feature imagery associated with mourning, such as shrouded obelisks and tree stumps. Later markers, such as the Woodmen of the World monuments, were standardized designs. The white-marble Estes monument was designed by the J. S. Clark and Company Monument Works of Louisville, Kentucky. The Pruitt-Barrett mausoleum and the Boring-Keorber mausoleum are excellent examples of the Art Deco style of architecture. The burial monuments reflect the status of Hall County families and some experimented in new technology, such as zinc grave markers. Inscriptions, meant to evoke the life or death of the interred, include "Lost in the Alps" (Harold W. Telford, died 1907); "Lost at Sea" (Joe Vandiver, died 1918); "Crippled Jim" Smith, Chair Mender (died 1910); and Maude Mooney, whose marker depicts her twirling as "Mademoiselle Vortex," whose "final curtain," came in March 1942.

The cemetery is significant in the area of landscape architecture because its plan is characteristic of park-like municipal cemeteries established in Georgia in the late 19th century. These cemeteries feature grids of streets and family plots shaded by picturesque plantings of trees and shrubs. Smaller churchyard cemeteries often could not accommodate families that wished to be buried together. Larger cemeteries, such as Alta Vista, were laid out with family plots, which allowed families to be buried together. Family plots, which became increasingly important in the late 19th century, are an important distinguishing feature of large municipal cemeteries. Family plots are lined with brick, stone-and-concrete curbing, and iron fences. In the mid-20th century, Blocks A, B, and C were opened without delineated family plots. The long rows of granite grave markers provide expansive lawns and ease of maintenance.

Alta Vista Cemetery
Name of Property

Hall County, Georgia
County and State

The cemetery is significant in the area of community planning and development because it represents the city of Gainesville's efforts to provide a public cemetery as an alternative to the privately owned cemeteries on farms and in churchyards. As Gainesville grew, churchyard graves, such as Nazareth Church cemetery, were moved to Alta Vista. Graves were relocated to Alta Vista in the 1950s to make way for the creation of Lake Lanier and in 1965, adjacent Woodlawn Cemetery was made a part of Alta Vista. The cemetery is part of the garden cemetery movement, which became popular in the United States in the middle and late 19th century. Alta Vista was created to provide family plots in a garden setting and to consolidate many of the Gainesville's burials in a large, municipal cemetery. As the principal cemetery for Gainesville and Hall County, Alta Vista includes the burials of veterans, two Georgia governors, the first mayor of Gainesville, a Congressman, and sections for white and black indigent burials.

The cemetery is also significant in the area of social history and black ethnic heritage because it includes a racially segregated section for African-American burials. During Jim Crow in the South, it was common for all public facilities to be racially segregated and Jim Crow laws extended to burial practices. The African-American section of Alta Vista includes the burials of leaders of the city's African-American community, such as physician Emmett E. Butler, and a large area of unmarked graves, called a potter's field.

Developmental history/additional historic context information (if appropriate)

The following developmental history derives from Vince Evans, "Alta Vista Cemetery." Draft *National Register of Historic Places Registration Form*, October 2008. On file at the Historic Preservation Division, Georgia Department of Natural Resources, Atlanta, Georgia.

Alta Vista Cemetery was established in 1872, when the city of Gainesville purchased 9.25 acres southwest of downtown for a municipal cemetery for the city of Gainesville and Hall County. Families maintained their own plots or contracted with the city to maintain them. In the 1870s and 1880s, graves from nearby church cemeteries were relocated to Alta Vista. The city purchased the property for \$370 from Allen D. Candler, a prominent Gainesville businessman. The next year, Nazareth Church cemetery graves were relocated to Alta Vista. A.B.C. Dorsey, a funeral-home operator, managed the cemetery from 1877 until 1889, when the city hired a sexton to operate the cemetery. In 1928, a private cemetery was reinterred to Alta Vista.

In 1877, the city purchased three adjoining acres to the north for African-American burials. Later a fourth acre was added. The African-American section was segregated from the white burials and includes marked burials and an area for unmarked burials, called a potter's field. This area operated as a "self-serve" section where families selected burial sites from the available land. Some family plots are delineated with brick or stone coping. Records for the black potter's field do not survive. The cemetery also includes a potter's field for white burials in Block 8. Racial segregation of burials ended at Alta Vista in the late 1950s.

Alta Vista Cemetery includes sections for the Daughters of the American Revolution and American Legion. The cemetery includes burials of veterans from each American war, including three soldiers of the Revolutionary War. The cemetery includes the graves of persons important in Georgia history, including Lieutenant General James Longstreet; Georgia Governors James M. Smith and Allen D. Candler; first mayor of Gainesville Robert H. Smith; Congressman Thomas Montgomery Bell; Jesse Dickson Jewell, whose innovations in the poultry industry during the mid-20th century led Gainesville to be known as "the poultry capital of the world;" and astronaut Charles Manley "Sonny" Carter. The cemetery includes the burials of African-American physician E. E. Butler, and John W. Morrow, Jr., who was the first black mayor of Gainesville, elected in 1985. The cemetery also includes victims of tornadoes that struck the city in 1903 and 1936.

Alta Vista Cemetery continued to expand in the decades after World War II. In the mid-1950s, the creation of nearby Lake Lanier, among the largest lakes in the state, resulted in the relocation of numerous burials to Alta Vista. In 1964, the cemetery office building on Jones Street was built, and in 1965 the cemetery was expanded to the west to include the private Woodlawn Cemetery. Blocks A, B, and C on the northeast side of the cemetery were opened in the 1950s and reflect the introduction of the all-inclusive perpetual care program, which was introduced in 1952. The long rows of

Alta Vista Cemetery

Name of Property

Hall County, Georgia

County and State

polished granite headstones do not include low walls or coping, which were characteristic of early burial practices, but instead are laid out amid a continuous grass lawn for ease of maintenance.

Blocks D, E, and F were opened in the mid-1960s. Blocks G and H were opened in the early 1970s. Block I was opened in 1988 and Block J was opened in 1999. A Colonial Revival-style mausoleum was built on 8th Avenue in 2010. Blocks D through J and the mausoleum on 8th Avenue are not included within the bounds of the historic district. The cemetery, which no longer has burial sites available for sale, includes approximately 14,000 marked and unmarked burials.

9. Major Bibliographical References

Bibliography (Cite the books, articles, and other sources used in preparing this form.)

Baker, Carolyn Nuckolls, and Claude L. Brown, Jr. *Descendants of Minor Winn Brown*. 2002.

"Browns Bridge." *The Gainesville Eagle* 25 April 1929: 1.

"Death of Mrs. Dr. Banks." *The Gainesville Eagle*, 14 January 1881, 3.

Dorsey, James E. *The History of Hall County*, vol. 1. Gainesville, GA: Magnolia Press, 1991.

Evans, Vince. "Alta Vista Cemetery." Draft *National Register of Historic Places Registration Form*. October 2008. On file at the Historic Preservation Division, Georgia Department of Natural Resources, Atlanta, Georgia.

"Fired first gun of Civil War." *The Gainesville News*, 12 April 1905, 1.

Ham, Robert F. Interview with Vince Evans. 3 July 2007.

Jones, Patricia K. *Confederate Veterans of Hall County, Georgia*. Gainesville, GA: Patricia K. Jones, 2003.

Knight, Lucian L. *Georgia's Landmarks, Memorials and Legends*. Atlanta, GA: The Byrd Printing Company, 1913.

McRay, Sybil. "Alta Vista Cemetery filled with history." *The Daily Times* 3, May 1970, 25.

_____. "Brown cemetery was once on library site." *The Daily Times* 6, June 1971, 9.

Previous documentation on file (NPS):

☐ preliminary determination of individual listing (36 CFR 67 has been requested)
☐ previously listed in the National Register
☐ previously determined eligible by the National Register
☐ designated a National Historic Landmark
☐ recorded by Historic American Buildings Survey # _____
☐ recorded by Historic American Engineering Record # _____
☐ recorded by Historic American Landscape Survey # _____

Primary location of additional data:

☒ State Historic Preservation Office
☐ Other State agency
☐ Federal agency
☐ Local government
☐ University
☐ Other

Name of repository: _____

Historic Resources Survey Number (if assigned): _____

Alta Vista Cemetery
Name of Property

Hall County, Georgia
County and State

10. Geographical Data

Acreage of Property Approximately 35 acres
(Do not include previously listed resource acreage.)

UTM References

(Place additional UTM references on a continuation sheet.)

A	<u>17</u> Zone	<u>238460</u> Easting	<u>3797680</u> Northing	E	<u>17</u> Zone	<u>239080</u> Easting	<u>3797850</u> Northing
B	<u>17</u> Zone	<u>238720</u> Easting	<u>3797960</u> Northing	F	<u>17</u> Zone	<u>239080</u> Easting	<u>3797940</u> Northing
C	<u>17</u> Zone	<u>238890</u> Easting	<u>3798890</u> Northing	G	<u>17</u> Zone	<u>238940</u> Easting	<u>3797600</u> Northing
D	<u>17</u> Zone	<u>239000</u> Easting	<u>3798020</u> Northing	H	<u>17</u> Zone	<u>238540</u> Easting	<u>3797520</u> Northing

Verbal Boundary Description (Describe the boundaries of the property.)

The National Register boundary is indicated by a heavy black line on the attached map, which is drawn to scale.

Boundary Justification (Explain why the boundaries were selected.)

The boundary includes the entire, intact historic Alta Vista Cemetery.

11. Form Prepared By

name/title Steven Moffson, Architectural Historian
organization Historic Preservation Division, GA Dept. of Natural Resources date April 15, 2012
street & number 254 Washington Street, Ground Level telephone (404) 656-2840
city or town Atlanta State GA zip code 30034
e-mail Steven.moffson@dnr.state.ga.us

Additional Documentation

Submit the following items with the completed form:

- **Maps:** A USGS map (7.5 or 15 minute series) indicating the property's location.

Alta Vista Cemetery
Name of Property

Hall County, Georgia
County and State

A **Sketch map** for historic districts and properties having large acreage or numerous resources. Key all photographs to this map.

- **Continuation Sheets**
- **Additional items:** (Check with the SHPO or FPO for any additional items.)

Photographs:

Submit clear and descriptive photographs. The size of each image must be 1600x1200 pixels at 300 ppi (pixels per inch) or larger. Key all photographs to the sketch map.

Name of Property: Alta Vista Cemetery

City or Vicinity: Gainesville

County: Hall State: Georgia

Photographer: Charlie Miller

Date Photographed: November 2010

Description of Photograph(s) and number:

- 1 of 42. Main entrance, photographer facing northwest.
- 2 of 42. Daughters of the American Revolution monument, photographer facing northwest.
- 3 of 42. Block 14, photographer facing northwest.
- 4 of 42. Block 12, Margueritte and Noel Whittingham Kinsey gravemarker, photographer facing northeast.
- 5 of 42. Block 14, Boring-Koerber mausoleum, photographer facing northwest.
- 6 of 42. Block 14, Hosch gravemarker with Pruitt-Barrett mausoleum in background, photographer facing northwest.
- 7 of 42. Block 10, Puckett gravemarker, photographer facing northeast.
- 8 of 42. Block 10, Thomas M. Bell gravemarker, photographer facing southwest.
- 9 of 42. Block 1, Hunnicutt family plot, photographer facing northwest.
- 10 of 42. Block 1, Hunnicutt family plot, detail of cast-iron gate, photographer facing northwest.
- 11 of 42. Block 9, Isaac Gardner zinc gravemarker, photographer facing northeast.
- 12 of 42. Block 1, cast-iron chair, photographer facing northeast.
- 13 of 42. White potter's field, photographer facing north.
- 14 of 42. Block 2, Estes gravemarker, photographer facing northeast.
- 15 of 42. Block 2, photographer facing northwest.
- 16 of 42. Block 2, photographer facing northwest

Alta Vista Cemetery
Name of Property

Hall County, Georgia
County and State

- 17 of 42. Block 3, Governor James Milton Smith and Hester A. R. Smith gravemarkers, photographer facing west.
- 18 of 42. Block 5, detail of cast-iron fence, photographer facing north.
- 19 of 42. Block 5, cast-iron fence, photographer facing northwest.
- 20 of 42. Block 3 in foreground, photographer facing north.
- 21 of 42. Block 3 in foreground with General James Longstreet gravemarker, center, photographer facing northeast.
- 22 of 42. Block 3, General James Longstreet gravemarker, photographer facing northeast.
- 23 of 42. Blocks A, B, and C, photographer facing northeast.
- 24 of 42. Blocks C (foreground), B, and A, photographer facing southwest.
- 25 of 42. African-American potter's field, photographer facing northwest.
- 26 of 42. Dr. Emmett E. and Lillian P. Butler gravemarker in African-American section, photographer facing west
- 27 of 42. William Field gravemarker in African-American potter's field, photographer facing northeast.
- 28 of 42. Block 6, photographer facing southwest.
- 29 of 42. Block 6, Mrs. Mittie Engram LaHatte zinc gravemarker, photographer facing south.
- 30 of 42. Block 1N, marker for unknown dead killed in tornado, April 6, 1936, photographer facing west.
- 31 of 42. Block 15, Mary Lounnelle Tanner gravemarker, photographer facing southwest.
- 32 of 42. Block 15, Mrs. Maude Mooney gravemarker, photographer facing southwest.
- 33 of 42. Block 3N, Dustin Keeth Dove gravemarker, photographer facing southwest.
- 34 of 42. Block 3N, photographer facing northeast.
- 35 of 42. Woodlawn Cemetery, photographer facing southwest.
- 36 of 42. Woodlawn Cemetery, Ernest F. Anderson, Woodmen of the World gravemarker, photographer facing west.
- 37 of 42. Woodlawn Cemetery, Green Roper, Woodmen of the World gravemarker, photographer facing west.
- 38 of 42. Woodlawn Cemetery, Reeves family plot, photographer facing west.
- 39 of 42. Woodlawn Cemetery, photographer facing west.
- 40 of 42. Woodlawn Cemetery, B. P. Byrd gravemarker, photographer facing west.
- 41 of 42. Woodlawn Cemetery, photographer facing west.
- 42 of 42. Cemetery office building, photographer facing west.

UNITED STATES DEPARTMENT OF THE INTERIOR
NATIONAL PARK SERVICE

NATIONAL REGISTER OF HISTORIC PLACES
EVALUATION/RETURN SHEET

REQUESTED ACTION: NOMINATION

PROPERTY NAME: Alta Vista Cemetery

MULTIPLE
NAME:

STATE & COUNTY: GEORGIA, Hall

DATE RECEIVED: 7/13/12 DATE OF PENDING LIST: 8/10/12
DATE OF 16TH DAY: 8/27/12 DATE OF 45TH DAY: 8/29/12
DATE OF WEEKLY LIST:

REFERENCE NUMBER: 12000551

REASONS FOR REVIEW:

APPEAL: N DATA PROBLEM: N LANDSCAPE: N LESS THAN 50 YEARS: Y
OTHER: N PDIL: N PERIOD: N PROGRAM UNAPPROVED: N
REQUEST: Y SAMPLE: N SLR DRAFT: N NATIONAL: N

COMMENT WAIVER: N

☒ ACCEPT ☐ RETURN ☐ REJECT 8/28/12 DATE

ABSTRACT/SUMMARY COMMENTS:

local level.
City Cemetery - Architecture/art
community place/dev. Social History/Ethnic Heritage
landscape architecture. 1872-1965.

RECOM./CRITERIA A/C

REVIEWER Lisa Delore

DISCIPLINE History

TELEPHONE _____

DATE 8/28/12

DOCUMENTATION see attached comments Y/N see attached SLR Y/N

If a nomination is returned to the nominating authority, the nomination is no longer under consideration by the NPS.



**Alta Vista Cemetery
Hall County, Georgia
Photograph 1 of 42**



Alta Vista Cemetery
Hall County, Georgia
Photograph 2 of 42



Alta Vista Cemetery
Hall County, Georgia
Photograph 3 of 42



Alta Vista Cemetery
Hall County, Georgia
Photograph 4 of 42



Alta Vista Cemetery
Hall County, Georgia
Photograph 5 of 42



Alta Vista Cemetery
Hall County, Georgia
Photograph 6 of 42



Alta Vista Cemetery
Hall County, Georgia
Photograph 7 of 42



Alta Vista Cemetery
Hall County, Georgia
Photograph 8 of 42



Alta Vista Cemetery
Hall County, Georgia
Photograph 9 of 42



Alta Vista Cemetery
Hall County, Georgia
Photograph 10 of 42



Alta Vista Cemetery
Hall County, Georgia
Photograph 11 of 42



Alta Vista Cemetery
Hall County, Georgia
Photograph 12 of 42



**Alta Vista Cemetery
Hall County, Georgia
Photograph 13 of 42**



Alta Vista Cemetery
Hall County, Georgia
Photograph 14 of 42



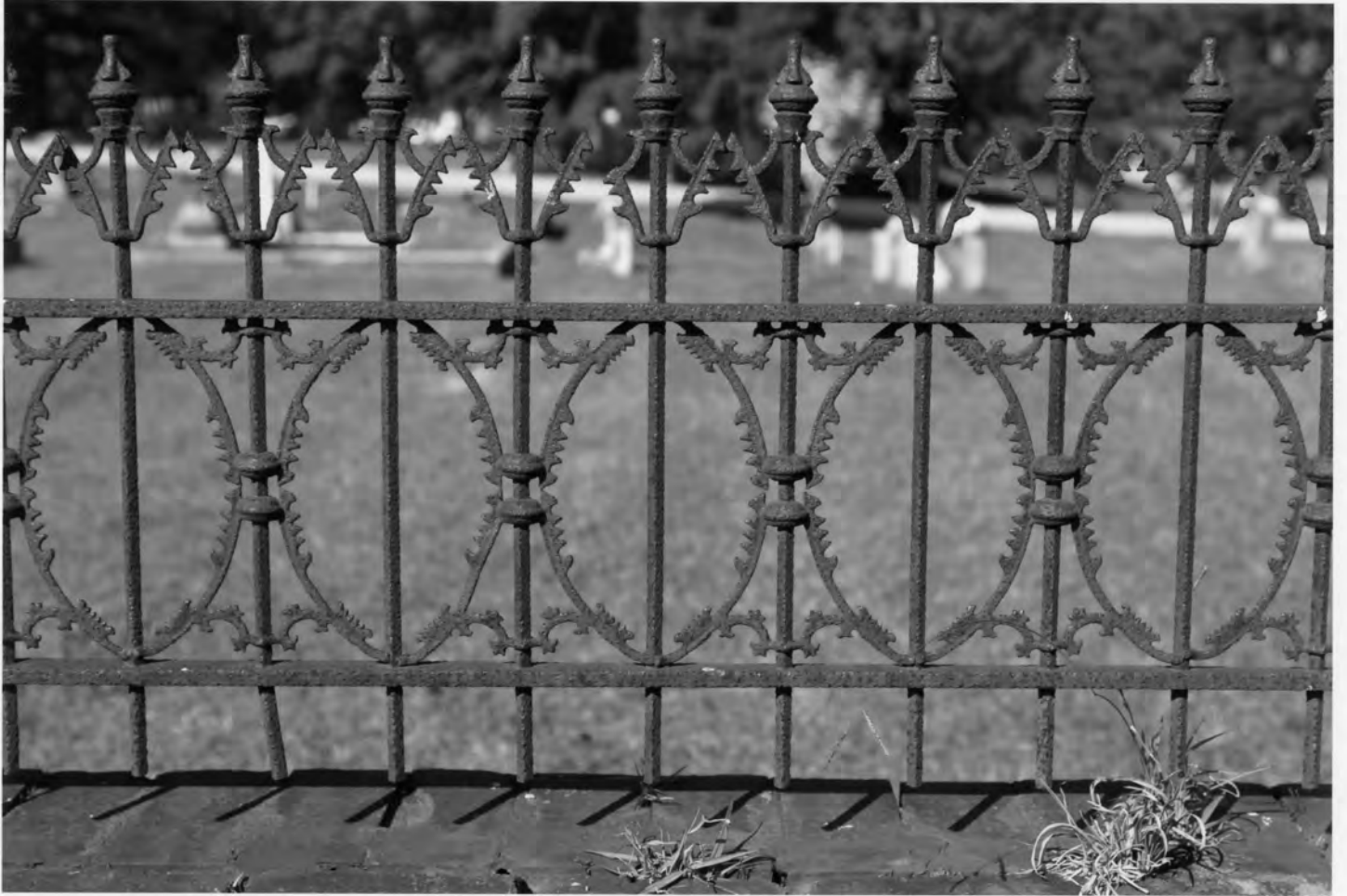
Alta Vista Cemetery
Hall County, Georgia
Photograph 15 of 42



Alta Vista Cemetery
Hall County, Georgia
Photograph 16 of 42



Alta Vista Cemetery
Hall County, Georgia
Photograph 17 of 42



Alta Vista Cemetery
Hall County, Georgia
Photograph 18 of 42



**Alta Vista Cemetery
Hall County, Georgia
Photograph 19 of 42**



Alta Vista Cemetery
Hall County, Georgia
Photograph 20 of 42



Alta Vista Cemetery
Hall County, Georgia
Photograph 21 of 42



Alta Vista Cemetery
Hall County, Georgia
Photograph 22 of 42



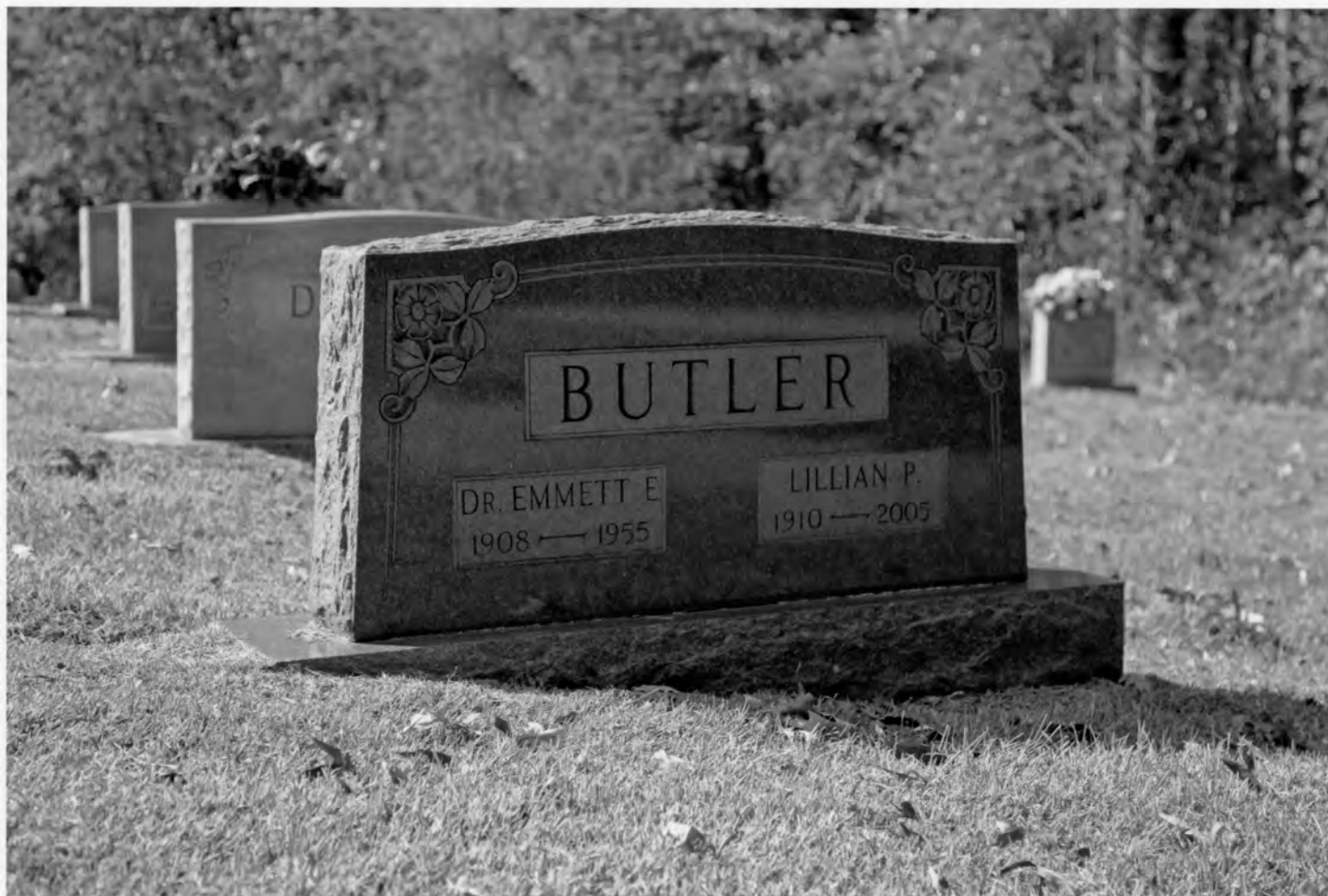
Alta Vista Cemetery
Hall County, Georgia
Photograph 23 of 42



Alta Vista Cemetery
Hall County, Georgia
Photograph 24 of 42



Alta Vista Cemetery
Hall County, Georgia
Photograph 25 of 42



Alta Vista Cemetery
Hall County, Georgia
Photograph 26 of 42



Alta Vista Cemetery
Hall County, Georgia
Photograph 27 of 42



Alta Vista Cemetery
Hall County, Georgia
Photograph 28 of 42



Alta Vista Cemetery
Hall County, Georgia
Photograph 29 of 42



Alta Vista Cemetery
Hall County, Georgia
Photograph 30 of 42



Alta Vista Cemetery
Hall County, Georgia
Photograph 31 of 42



Alta Vista Cemetery
Hall County, Georgia
Photograph 32 of 42



Alta Vista Cemetery
Hall County, Georgia
Photograph 33 of 42



Alta Vista Cemetery
Hall County, Georgia
Photograph 34 of 42



Alta Vista Cemetery
Hall County, Georgia
Photograph 35 of 42



Alta Vista Cemetery
Hall County, Georgia
Photograph 36 of 42



Alta Vista Cemetery
Hall County, Georgia
Photograph 37 of 42



Alta Vista Cemetery
Hall County, Georgia
Photograph 38 of 42



Alta Vista Cemetery
Hall County, Georgia
Photograph 39 of 42



Alta Vista Cemetery
Hall County, Georgia
Photograph 40 of 42



**Alta Vista Cemetery
Hall County, Georgia
Photograph 41 of 42**

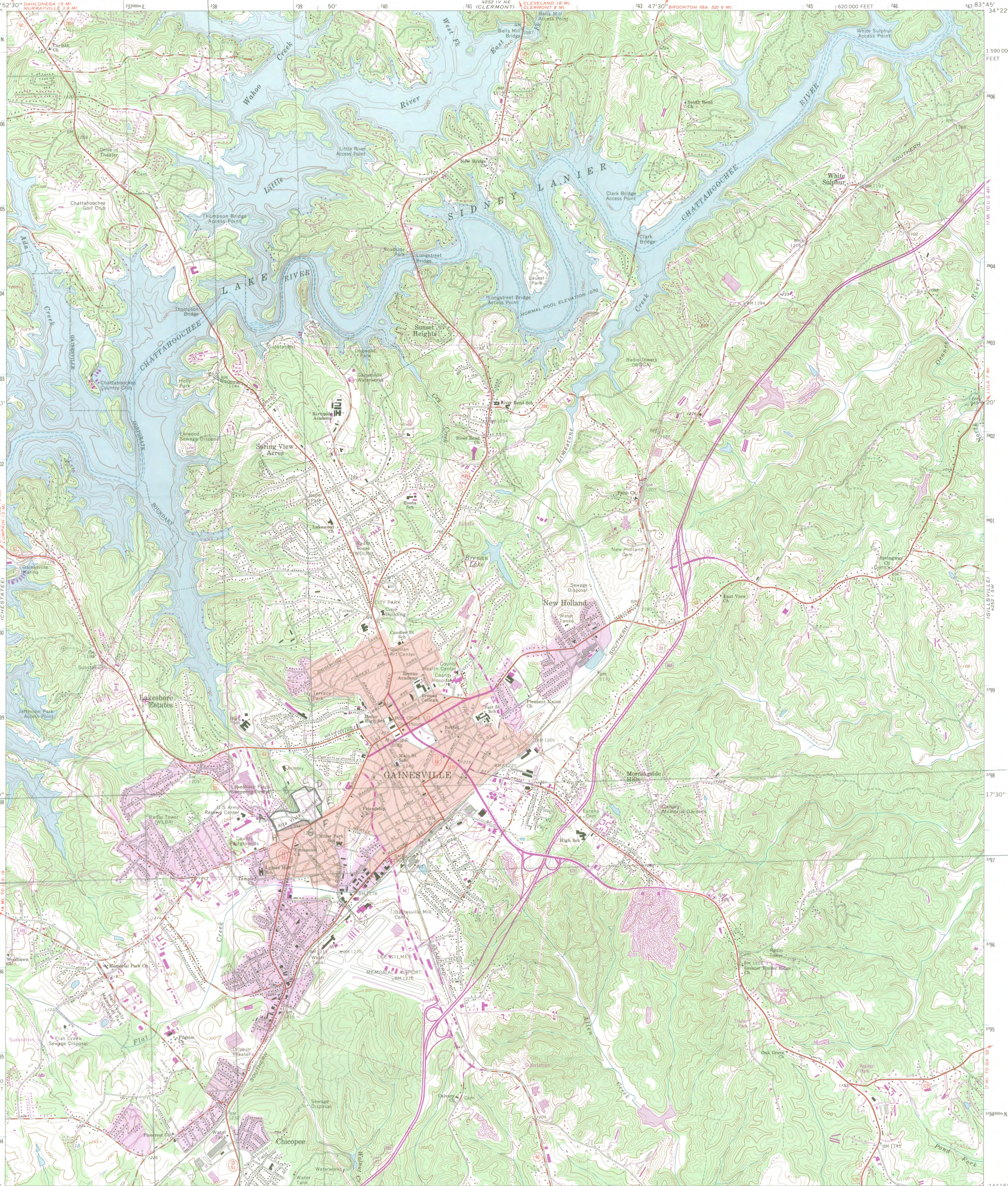


Alta Vista Cemetery
Hall County, Georgia
Photograph 42 of 42

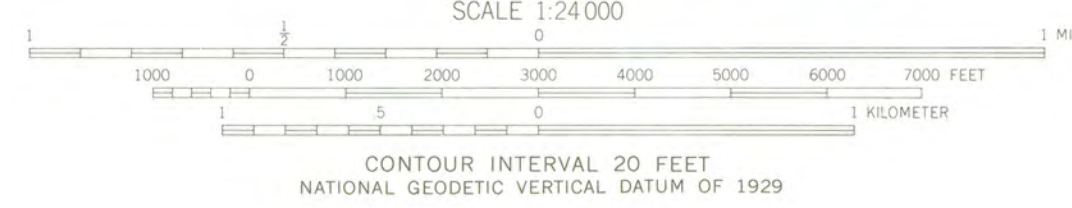
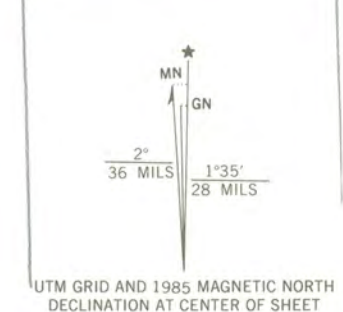
UNITED STATES
DEPARTMENT OF THE INTERIOR
GEOLOGICAL SURVEY

GAINESVILLE QUADRANGLE
GEORGIA—HALL CO.
7.5 MINUTE SERIES (TOPOGRAPHIC)

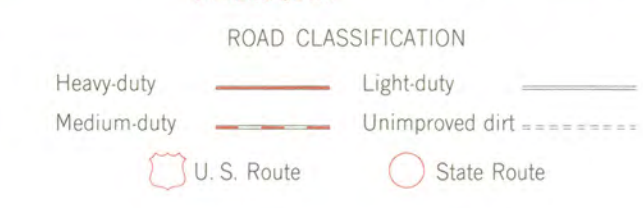
Alta Vista
Cemetery,
Hall Co., GA.
UTM Ref.:
A) 17/238460/
3797680
B) 17/238720/
3797960
C) 17/238990/
3799020
D) 17/239000/
3799020
E) 17/239080/
3797850
F) 17/239080/
3797680
G) 17/238940/
3797600
H) 17/238540/
3797520



Mapped, edited, and published by the Geological Survey
Control by USGS, USC&GS, USCE, and Georgia Geodetic Survey
Topography by photogrammetric methods from aerial photographs
taken 1956, 1962, and 1963. Field checked 1964
Polyconic projection. 1927 North American datum
10,000-foot grid based on Georgia coordinate system, west zone
1000-meter Universal Transverse Mercator grid ticks,
zone 17, shown in blue
To place on the predicted North American Datum 1983,
move the projection lines 9 meters south and
9 meters west as shown by dashed corner ticks
Chattahoochee River channel from maps by the U. S. Corps of Engineers
Red tint indicates areas in which only landmark buildings are shown
Fine red dashed lines indicate selected fence and field lines where
generally visible on aerial photographs. This information is unchecked

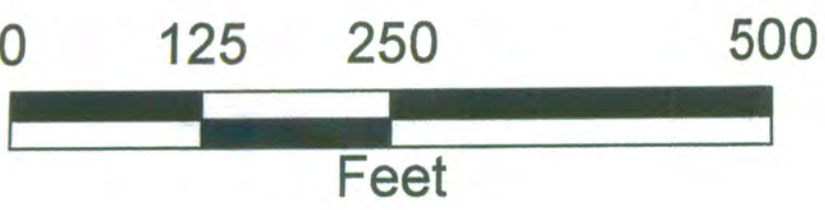


THIS MAP COMPLIES WITH NATIONAL MAP ACCURACY STANDARDS
FOR SALE BY U.S. GEOLOGICAL SURVEY
DENVER, COLORADO 80225, OR RESTON, VIRGINIA 22092
A FOLDER DESCRIBING TOPOGRAPHIC MAPS AND SYMBOLS IS AVAILABLE ON REQUEST



GAINESVILLE, GA.
34083-C7-TF-024
1964
PHOTOREVISED 1985
DMA 4252 IV SE-SERIES V845

Revisions shown in purple compiled in cooperation with State of Georgia
agencies from aerial photographs taken 1981 and other sources
This information not field checked. Map edited 1985
Purple tint indicates extension of urban areas



ALTAVISTA CEMETERY



HISTORIC PRESERVATION DIVISION

MARK WILLIAMS
COMMISSIONER



DR. DAVID CRASS
DIVISION DIRECTOR

July 5, 2012

J. Paul Loether
National Park Service
National Register of Historic Places
1201 "I" (Eye) Street, N.W. 8th floor
Washington, D.C. 20005

Dear Mr. Loether:

Please find enclosed the following materials for your consideration submitted on this 18th day of June 2012, for the nomination of the **Alta Vista Cemetery, Hall County, Georgia** to the National Register of Historic Places.

- ☒ Original National Register of Historic Places nomination form
- ☒ DVD with electronic images
- ☒ Photographs
- ☒ Original USGS topographic map(s)
- ☒ Sketch map(s)/attachment(s)
- ☐ Correspondence
- ☐ Other:

COMMENTS:

- ☐ Please insure that this nomination is reviewed
- ☐ This property has been certified under 36 CFR 67
- ☐ The enclosed owner objection(s) do ☐ do not ☐ constitute a majority of property owners.
- ☐ Special considerations:

Sincerely,

Gretchen Brock
National Register & Survey Program Manager

Enclosure