



MASONIC TEMPLE

NO PARKING
11:30 AM - 2:00 PM

DEVILS LAKE MASONIC TEMPLE

RAMSEY, NORTH DAKOTA

JIM ERICKSON, PHOTOGRAPHER

MARCH 2, 1998

STATE HISTORICAL SOCIETY OF NORTH DAKOTA (ORIGINAL NEGATIVE LOCATION)

PHOTO # 1



DEVILS LAKE MASONIC TEMPLE
RAMSEY, NORTH DAKOTA
JIM ERICKSON, PHOTOGRAPHER
MARCH 2, 1998

STATE HISTORICAL SOCIETY OF NORTH DAKOTA (ORIGINAL NEGATIVE LOCATION)
PHOTO # 2



DEVILS LAKE MASONIC TEMPLE

RAMSEY, NORTH DAKOTA

JIM ERICKSON, PHOTOGRAPHER

MARCH 2, 1998

STATE HISTORICAL SOCIETY OF NORTH DAKOTA (ORIGINAL NEGATIVE LOCATION)

PHOTO # 3



DEVILS LAKE MASONIC TEMPLE

RAMSEY, NORTH DAKOTA

JIM ERICKSON, PHOTOGRAPHER

MARCH 2, 1998

STATE HISTORICAL SOCIETY OF NORTH DAKOTA (ORIGINAL NEGATIVE LOCATION)

PHOTO #4



DEVILS LAKE MASONIC TEMPLE

RAMSEY, NORTH DAKOTA

BILL HARRIS

OCT. 26, 1997

STATE HISTORICAL SOCIETY OF NORTH DAKOTA

PHOTO # 5



DEVILS LAKE MASONIC TEMPLE

RAMSEY, NORTH DAKOTA

BILL HARRIS

OCT. 26, 1997

STATE HISTORICAL SOCIETY OF NORTH DAKOTA
PHOTO # 6



DEVILS LAKE MASONIC TEMPLE

RAMSEY, NORTH DAKOTA

BILL HARRIS

OCT. 26, 1997

STATE HISTORICAL SOCIETY OF NORTH DAKOTA

PHOTO # 7



DEVILS LAKE MASONIC TEMPLE

RAMSEY, NORTH DAKOTA

BILL HARRIS

OCT. 26, 1997

STATE HISTORICAL SOCIETY OF NORTH DAKOTA

PHOTO # 8



DEVILS LAKE MASONIC TEMPLE

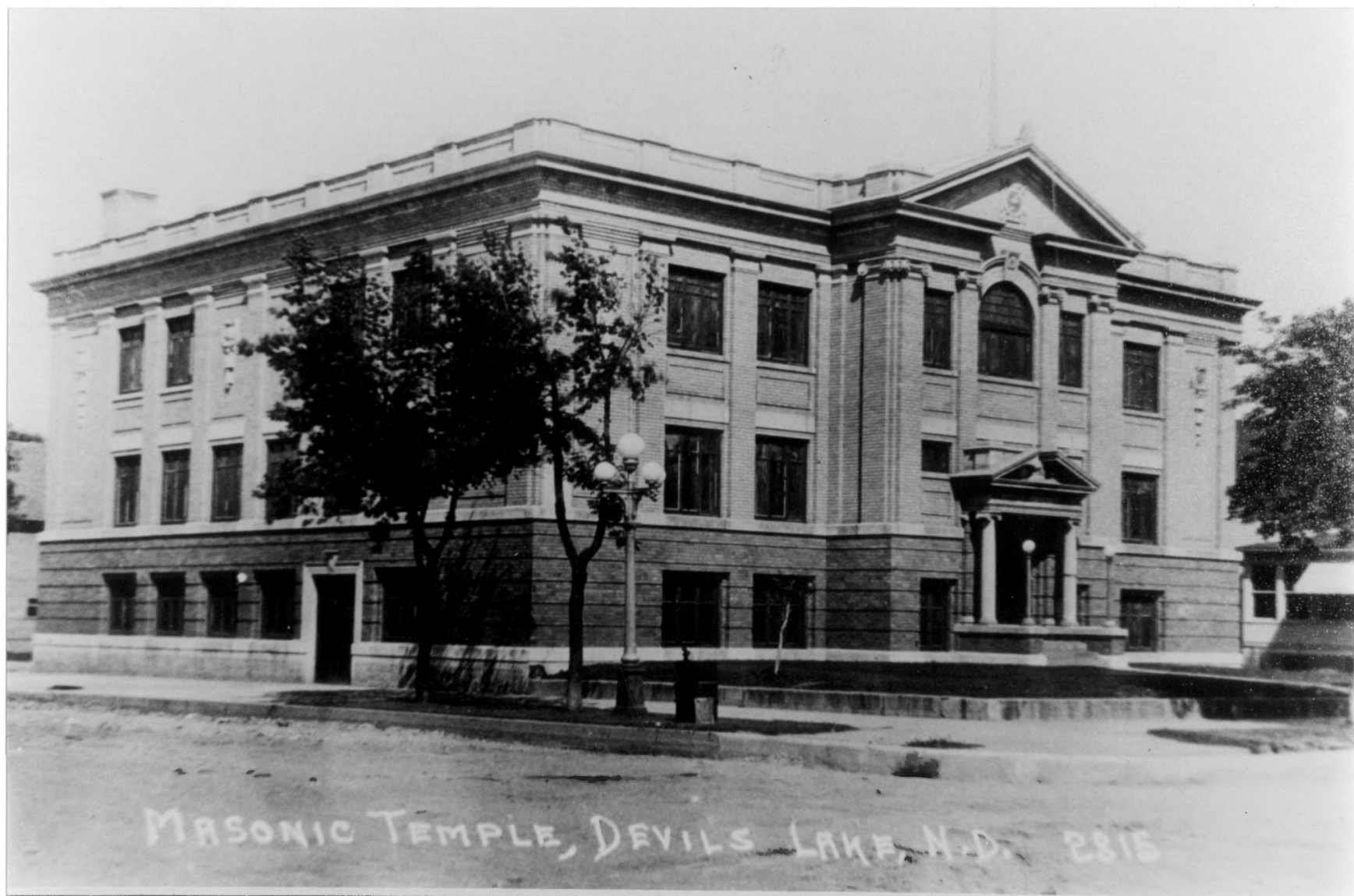
RAMSEY, NORTH DAKOTA

BILL HARRIS

OCT. 26, 1997

STATE HISTORICAL SOCIETY OF NORTH DAKOTA

PHOTO #9



MASONIC TEMPLE, DEVILS LAKE, N.D. 2815

DEVILS LAKE MASONIC TEMPLE

RAMSEY COUNTY, NORTH DAKOTA

PHOTOGRAPHER UNKNOWN

TAKEN: C. 1917-1918

NEG: STATE HISTORICAL SOCIETY OF NORTH DAKOTA

PHOTO #10