



B-996

The National Brewing Company

Baltimore City, Maryland

Julie Davis for Betty Bird and Associates

January 2002

MD SHPO

View southeast along Conkling Street: 1933 Beer Cellar (left),  
1885-89 and 1899 Beer Cellars (center), and Stock House (right)

1 of 24



BREWERSHILL.net  
LEASE!  
403-573-4000



RENTAL

RENTAL

B-996

The National Brewing Company

Baltimore City, Maryland

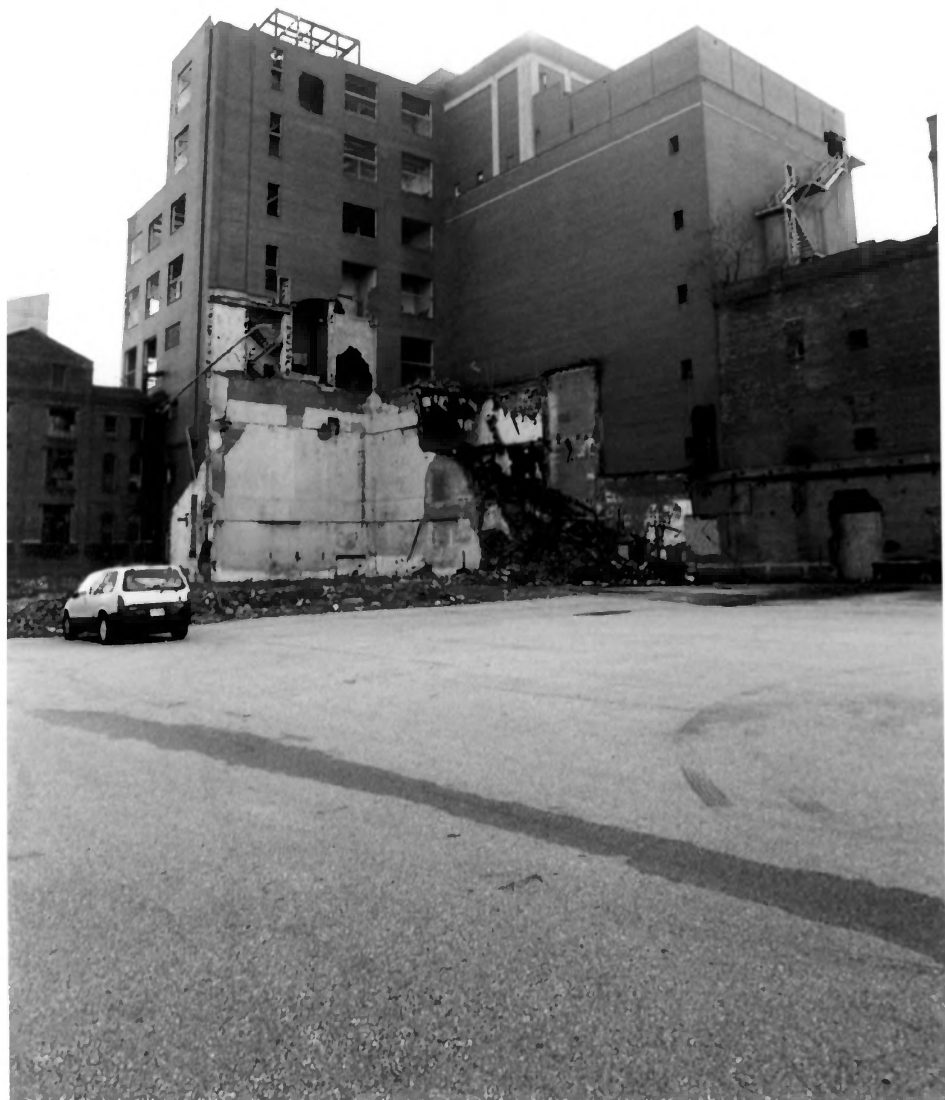
Julie Parsie for Betty Bird and Associates

January 2002

MD SHPO

West and south elevations, Stock House, Brewhouse, and Matt Mill

2 of 24



B-996

The National Brewing Company

Baltimore City, Maryland

Jolie Darsie for Betty Bird and Associates

January 2002

MD SHPO

View southwest toward Stock House, Brewhouse and Malt Mill.

Note damaged walls adjacent to demolition.

3 of 24



B-996

The National Brewing Company

Baltimore City, Maryland

Julie Darsie for Betty Bird & Associates

January 2002

MP SHPO

Second floor interior of 1950 Stock House

4 of 24





THE  
NATIONAL  
BREWING COMPANY

SHUTTERED WINDOWS

SHUTTERED WINDOWS

SHUTTERED WINDOWS

BROKEN WINDOW

BROKEN WINDOW

BROKEN WINDOW

SHUTTERED WINDOWS

SHUTTERED WINDOW

DOOR

GRAFFITI

GRAFFITI

GRAFFITI

B-996

The National Brewing Company  
Baltimore City, Maryland

Julie Darste for Betty Bird and Associates

January, 2002

MD SHPO

South elevation, Grain Storage Building

5 of 24



B-990

The National Brewing Company

Baltimore City, Maryland

Julie Darsie for Betty Bird and Associates

January 2002

MS 2120

North elevation, Grain Storage Building

6 of 24

A black and white photograph showing the upper portion of a brick building. The building features a prominent gable roof with a brick chimney on the left side. The words "THE NATIONAL BREWING COMPANY" are mounted on the brickwork in large, three-dimensional, block letters. The letters are arranged in three lines: "THE" on the top line, "NATIONAL" on the middle line, and "BREWING COMPANY" on the bottom line. The building's facade is made of dark bricks, and there are windows with dark shutters visible at the bottom. The sky is a clear, light gray.

THE  
NATIONAL  
BREWING COMPANY.

B-996

The National Brewing Company

Baltimore City, Maryland

Julie Darsie for Betty Bird & Associates

January 2002

MD SHPO

Detail of gable on Grain Storage Building

7 of 24



B-996

The National Brewing Company  
Baltimore City, Maryland

Julie Parsie for Betty Bird and Associates

January 2002

MD SHPO

View southwest toward Oil Tank Building

8 of 24





1885

1889

B-996

The National Brewing Company

Baltimore City, Maryland

Julie Darse for Betty Bird and Associates

January 2002

MD SHPO

West elevations, 1899 Beer Cellar (left), 1885-1889 Beer Cellar  
(right)

9 of 24



B-996

the National Brewing Company

Baltimore City, Maryland

Julie Darsie for Betty Bird and Associates

January 2002

MD SHPO

East elevations 1885-89 Beer Cellar (left), 1899 Beer Cellar (right)

10 of 24



B-996

The National Brewing Company

Baltimore City, Maryland

Julie Parsie or Betty Bird and Associates

January 2002

MD SHPO

remnants of earlier beer cellars in the foundation  
of 1885 - 89 Beer Cellar

11 of 24



B-996

The National Brewing Company

Baltimore City, Maryland

Julie Darsie for Betty Bird and Associates

January 2002

MD SHPO

Detail of brick cornice on 1899 Beer Cellar

12 of 24





B-9916

The National Brewing Company

Baltimore City, Maryland

Julie Davis for Betty Bird and Associates

January 2002

MD SHPO

View southwest toward rear of Conking Street block. Malt Mill and Stock House on right, 1933 Beer Cellar on left. Note damaged walls adjacent to demolition on Malt Mill and 1933 Beer Cellar.

13 of 24



B-996

The National Brewing Company

Baltimore City, Maryland

Julie Darsie for Betty Bird and Associates

January 2002

MD SHPO

North and west elevations, 1933 Bottling Plant

14 of 24



B-996

The National Brewing Company  
Baltimore City, Maryland

Julie Darsie for Betty Bird & Associates

January 2022

MD SHPO

Interior of 1933 Bottling Plant

15 of 24



B-996

The National Brewing Company

Baltimore City, Maryland

Julie Dawstefor Betty Bird and Associates

January 2002

MD SHPO

North elevation, Case Storage Building

16 of 24





B-996

The National Brewing Company

Baltimore City, Maryland

Julie Darsie for Betty Bird and Associates

January 2002

MD SHPO

North and west elevations, Garage

17 of 24



B-996

The National Brewing Company  
Baltimore City, Maryland

Julie Parsie for Betty Bird and Associates

January, 2002

West and south elevations, 1939 Bottling Plant

18 of 24



B-996

The National Brewing Company

Baltimore City, Maryland

Julie Pausie for Betty Bird and Associates

January 2002

MD SHPO

East elevations Loading Dock (left), Annex (center), 1933 Bottling Plant (right), South elevation Case Storage Building (far right).  
Stock House in background.

19 of 24



B-996

The National Brewing Company

Baltimore City, Maryland.

Julie Darsie for Betty Bird and Associates

January 2002

MD SHPO

North and west elevations, Warehouse

20 of 24





B-996

The National Brewing Company  
Baltimore City, Maryland

Julie Darsae for Betty Bird and Associates

January 2002

MD SHPO

South elevation, Garage

21 of 24



B-996

The National Brewing Company

Baltimore City, Maryland

Julie Parsie for Betty Bird and Associates

January 2002

MS 3470

East and north elevations, Warehouse

22 of 24



B-996

The National Brewing Company

Baltimore City, Maryland

John Dawsie for Betty Bird and Associates

January 2002

MD SHPO

View southeast toward Warehouse (left), Warehouse Addition (right).

Note tank farm in background.

23 of 24



B-996

The National Brewing Company

Baltimore City, Maryland

Julie Darsie for Betty Bird & Associates

January 2002

MD SHPO

Neighborhood context: rowhouses on Elliott Street with Stock House in background.

24 of 24