

United States Department of the Interior
National Park Service

1559



National Register of Historic Places
Registration Form

This form is for use in nominating or requesting determinations for individual properties and districts. See instructions in How to Complete the National Register of Historic Places Registration Form (National Register Bulletin 16A). Complete each item by marking "x" in the appropriate box or by entering the information requested. If any item does not apply to the property being documented, enter "N/A" for "not applicable." For functions, architectural classification, materials, and areas of significance, enter only categories and subcategories from the instructions. Place additional entries and narrative items on continuation sheets (NPS Form 10-900a). Use a typewriter, word processor, or computer, to complete all items.

1. Name of Property

historic name Peabody Institute

other names/site number Peabody Institute Library of Danvers

2. Location

street & number 15 Sylvan Street

N/A not for publication

city or town Danvers

N/A vicinity

state Massachusetts

code MA

county Essex

code 009

zip code 01923

3. State/Federal Agency Certification

As the designated authority under the National Historic Preservation Act of 1986, as amended, I hereby certify that this nomination request for determination of eligibility meets the documentation standards for registering properties in the National Register of Historic Places and meets the procedural and professional requirements set forth in 36 CFR Part 60. In my opinion, the property meets does not meet the National Register Criteria. I recommend that this property be considered significant nationally statewide locally. (See continuation sheet for additional comments.)

Judith B. McDonough
Signature of certifying official/Title Judith B. McDonough, Executive Director
Massachusetts Historical Commission, State Historic Preservation Officer

11/13/97
Date

State or Federal agency and bureau

In my opinion, the property meets does not meet the National Register criteria. (See continuation sheet for additional Comments.)

Signature of certifying official/Title

Date

State or Federal agency and bureau

4. National Park Service Certification

- I, hereby certify that this property is:
 entered in the National Register
 See continuation sheet.
- determined eligible for the National Register
 See continuation sheet.
- determined not eligible for the National Register
- removed from the National Register
- other (explain): _____

Signature of the Keeper

Date of Action

Edson H. Beall

12/22/97

Peabody Institute
Name of Property

Essex County, Massachusetts
County and State

5. Classification

Ownership of Property

(Check as many boxes as apply)

(Check only one box)

- private
- public-local
- public-State
- public-Federal

- building(s)
- district
- site
- structure
- object

Number of Resources within Property

(Do not include previously listed resources in the count.)

Contributing	Noncontributing	
1		buildings
1		sites
		structures
		objects
2		Total

Name of related multiple property listing

(Enter "N/A" if property is not part of a multiple property listing.)

N/A

Number of contributing resources previously listed in the National Register

N/A

6. Function or Use

Historic Functions

(Enter categories from instructions)

SOCIAL/Civic
EDUCATION/Library
RECREATION AND CULTURE/Theater
RECREATION AND CULTURE/Museum
LANDSCAPE/Park

Current Functions

(Enter categories from instructions)

EDUCATION/Library
EDUCATION/Research Facility
LANDSCAPE/Park

7. Description

Architectural Classification

(Enter categories from instructions)

Classical Revival

Materials

(Enter categories from instructions)

foundation STONE/granite
walls WOOD/shiplap
roof METAL/Tin
other

Narrative Description

(Describe the historic and current condition of the property on one or more continuation sheets.)

See attached

National Register of Historic Places Continuation Sheet

Section number 7 Page 1

Peabody Institute
Danvers (Essex County) Massachusetts

7. DESCRIPTION

Located in a primarily residential neighborhood south of the Danvers commercial district, the Peabody Institute building is situated on a 4.38 acre lot bounded by Sylvan Street, Peabody Avenue, and Pond Street. The neighborhood consists mostly of single family homes dating from the late nineteenth and early twentieth centuries. Directly opposite across Sylvan Street is the Walnut Grove Cemetery. Across Pond Street to the south is a former mill pond. The lot upon which the library stands is called Peabody Park and contains forty-four different varieties of trees scattered throughout the grounds. A curvilinear drive accessed off Sylvan Street approaches the south end of the building where there was originally the main entrance, but which now continues out to Sylvan Street and provides an exit from the parking lot. Pedestrian paths lead to the principal entrance on the north elevation from three different locations, including two parking areas on the north end of the property.

The building is wood construction, rectangular in plan with a low pitched roof and a granite foundation (visible only on the north and east elevations.) It is sited on a small knoll in the center of the park. The exterior is wood fashioned to simulate masonry through the use of flushboard siding and composition ornament. Each facade is embellished with neo-classical trim to create an exterior in which every side displays important architectural features. A wood balustrade extends around the perimeter of the roof.

The principal elevation (north) is five bays with a two story circular portico in the center. The middle three bays have tripartite square headed windows on the first floor and tripartite round arched windows on the second. The two end bays project slightly from the plane of the wall with quoins at the ground floor level and paired Ionic pilasters above. These end pavilions are further distinguished from the center bays by having square headed windows surmounted by oculi draped in garlands, as opposed to the Palladian windows on the upper floor. As originally designed, the first story, which contained the library, was thereby clearly delineated on the exterior from the piano nobile, which contained the theater.

The entrance portico consists of wood piers supporting round arches with keystones. Circular brick steps lead to the entrance sheltered by the portico. The door is flanked by sidelights surmounted by a round arch. Both the sidelights and the arch have leaded glass lights. Small double hung sash flank the doorway. The original wood door has been replaced by one of metal with glass panels.

The opposite elevation, facing south, is nearly identical, the principal difference being the absence of an entrance through the portico. Instead there are square headed windows with large eight over eight double hung sash. The 1962-63 concrete addition, which is only partially above grade, is visible on this side of the building. By manipulating the topography the architects avoided obscuring from view the historic elevation of the building.

(Continued)

National Register of Historic Places Continuation Sheet

Section number 7 Page 2

Peabody Institute
Danvers (Essex County) Massachusetts

The east elevation originally contained the entrance to the theater. Paired Tuscan columns support what was originally a porte cochere that in 1980-81 received an infill of multi-pane lights and simulated balustrades. The columns support a full entablature and roof balustrade. Directly above in the center of this three bay elevation is a large Palladian window set beneath a louvered fan. The entire window is framed by paired Ionic pilasters supporting an entablature and pediment. The two flanking round arched triple hung sash are embellished with garlands, while below at the first floor level are oval windows with decorative multi-pane lights. Quoins supporting pilasters match the end pavilions of the two long elevations.

The west elevation is similar to the east facade, although there is no porte cochere, columns or pediment. The fenestration is simplified, as is the design of the central feature, the Palladian Window. Two exits at either side contained paired wooden doors.

The interior has been altered by the elimination of the theater and the expansion of the library. As originally designed, the interior spaces were organized to accommodate these two distinct functions. The auditorium entrance was beneath the porte cochere on the south side of the building, which has been enclosed with multi-pane glazing and converted into a reading room. The original oak double doors have been removed but the entry retains Corinthian columns supporting an entablature and fanlight. Opposite is a doorway leading into the library whose entrance is framed by pilasters supporting an entablature and pediment. Included within this aedicula are the former ticket offices, now converted into a closet and telephone booth.

To the left in this hallway, which runs perpendicular to the entrance from the porte cochere, is the one remaining staircase to the theater, now leading to the two upper floors of the library. The balustrade and newel post are in the Georgian Revival style. The staircase on the opposite end of the hall was replaced by book stacks and bathrooms.

The doorway in the hall which leads to the library circulation area passes through a small vestibule which has a vaulted ceiling and doorways on all four sides. On the south side is the Director's office, originally the Trustees Room, which contains a fireplace with bolection moldings, composition ornament, and paneling. Opposite on the north is a reading room, originally allocated for museum exhibits, which contains original woodwork, including a cornice molding. The vestibule itself has a domed ceiling ornamented with a floral motif and pilasters supporting the vaulted ceiling.

(Continued)

National Register of Historic Places Continuation Sheet

Section number 7 Page 3

Peabody Institute
Danvers (Essex County) Massachusetts

Continuing straight on axis with the porte cochere entrance is the main circulation desk in a large rectangular room which runs between both circular porticos on the north and south sides of the building. This space retains its original function, although the reading room is now the magazine room and the book circulation areas have been reconfigured with a new staircase added for access to the upper floors.

The main entrance from the exterior is through the north portico. The lobby in front of the circulation desk and the adjoining magazine room contains much of the decorative woodwork found in the building. Doorways with pilasters supporting a cornice or a full pediment, wainscot, and transom lights with decorative leaded glass designs embellish this area of the library. There is also a fireplace with a neo-classical mantel in the former reading room end of the building, which includes the glazed end of the circular portico on the south side of the building which looks out on to the park and mill pond. Fittingly located in the center of the lobby are two niches, one with a bust of George Peabody and the other with a bust of his son, George Augustus Peabody. Above each figure are inscriptions framed in oval designs of garlands fabricated in composition ornament.

The west end of the building, originally a stack area, has been converted for offices, workrooms and to accommodate a staircase and elevator shaft. The auditorium space, which was converted for additional library use by the addition of two floors, survives only in the ornamentation on the upper walls and ceiling visible on the third floor. The domed ceiling is intact, as are the upper sections of pilasters and entablatures, all embellished with Renaissance style composition ornament.

The first remodeling of the building occurred in 1961-62, Rich & Tucker, Architects. The first floor delivery room and stack rooms were opened up by removing partitions and installing a new charge desk. The basement was also excavated for a children's room, storage, and administrative uses.

A major renovation followed in 1980-81, Oscar Padgen, architect. The auditorium was sub-divided with the installation of an additional floor, creating 6,000 square feet of space. An underground wing provided another 12,000 square feet. This new space was used as follows: The installation of an elevator and a new staircase in the former librarian's office (which was moved to what was originally the Trustees Room and had later served as the reference room); reconfiguring the stack area for audio collections and administration; adding second and third floor reference and stack areas, as well as meeting rooms; and allocating the basement for closed storage and mechanical systems. The new underground wing contains the children's room, a meeting room with kitchen, and the archival center.

(Continued)

National Register of Historic Places Continuation Sheet

Section number 7 Page 4

**Peabody Institute
Danvers (Essex County) Massachusetts**

Archaeological Description

Although no prehistoric sites are located on the nominated property, a high potential exists that sites are present. Thirteen documented prehistoric sites are known in the general area (within one mile). Additional sites are also expected based on favorable locational criteria for the parcel and area including good drainage, level to moderate slope and close proximity to wetlands. The Institute is located in an area near various types of freshwater wetlands and a marine related ecosystem. Each of the above characteristics, the size of the property and the availability of open space indicates a high potential for the recovery of prehistoric resources.

There is also a moderate to high potential for the recovery of historic archaeological resources on the property. Archaeological resources may survive related to the Samuel Putnam Farm, present in the area during the 19th century and possibly earlier. No structures or landscape features have been identified related to this resource to date. Structural remains may also survive from an 1866 Gothic Library originally constructed at this site which burned in 1890. Archaeological testing can determine the extent to which the present Institute building was built on the footprint of the original 1866 structure and whether or not survivals remain from the earlier building. Archaeological evidence of the 1890 fire should also exist providing stratigraphic markers between the present and past structures. Structural remains from outbuildings and occupational related features (trash pits, privies, wells) related to the Putnam Farm and the earlier Library may also be present.

(End)

Peabody Institute
Name of Property

Essex County, Massachusetts
County and State

8. Statement of Significance

Applicable National Register Criteria

(Mark "x" in one or more boxes for the criteria qualifying the property for National Register listing.)

- A** Property is associated with events that have made a significant contribution to the broad patterns of our history.
- B** Property is associated with the lives of persons significant in our past.
- C** Property embodies the distinctive characteristics of a type, period, or method of construction or represents the work of a master, or possesses high artistic values, or represents a significant and distinguishable entity whose components lack individual distinction.
- D** Property has yielded, or is likely to yield, information important in prehistory or history.

Criteria Considerations

(Mark "x" in all the boxes that apply.)

Property is:

- A** owned by religious institution or used for religious purposes.
- B** removed from its original location.
- C** a birthplace or grave.
- D** a cemetery.
- E** a reconstructed building, object, or structure.
- F** a commemorative property.
- G** less than 50 years of age or achieved significance within the past 50 years.

Narrative Statement of Significance

(Explain the significance of the property on one or more continuation sheets.)

9. Major Bibliographical References

(Cite the books, articles, and other sources used in preparing this form on one or more continuation sheets.)

Previous documentation on file (NPS):

- preliminary determination of individual listing (36 CFR 67) has been requested
- previously listed in the National Register
- previously determined eligible by the National Register
- designated a National Historic Landmark
- recorded by Historic American Buildings Survey # _____
- recorded by Historic American Engineering Record # _____

Areas of Significance

(Enter categories from instructions)

ARCHITECTURE

SOCIAL HISTORY

COMMUNITY DEVELOPMENT AND PLANNING

Period of Significance

1857-1947

Significant Dates

1891-92

Significant Person

(Complete if Criterion B is marked above)

N/A

Cultural Affiliation

N/A

Architect/Builder

Little & Browne, architects

Joshua Silvester, landscaper

Primary location of additional data:

- State Historic Preservation Office
- Other State agency
- Federal agency
- Local government
- University
- Other

Name of repository:

Massachusetts Historical Commission

Danvers Archival Center

National Register of Historic Places Continuation Sheet

Section number 8 Page 1

Peabody Institute
Danvers (Essex County) Massachusetts

8. STATEMENT OF SIGNIFICANCE

The Peabody Institute and Library is significant as an outstanding example of neo-classical architecture by one of the major late nineteenth century firms in Massachusetts, Little & Browne, with a leading role in the design taken by chief draftsman Lester Couch. The building is also significant for its association with the history of Peabody in the second half of the 19th century, during which the town's institution was inextricably linked to the beneficence of its most important native son, philanthropist George Peabody. Accordingly, the property is eligible for listing under Criteria A and C.

George Peabody (1795-1869) was a well-established banker and philanthropist when, in December, 1856, he donated \$10,000 to establish a branch library of the Peabody Institute in the Danvers town hall. A year earlier the town of Danvers had been formed out of the town of South Danvers (later renamed Peabody), where the first Peabody Institute was located. The difficulties of having a branch library in a separate town led to George Peabody's decision to provide \$40,000 to establish an independent Peabody Institute of Danvers. When, three years later, a library building was constructed, the logical location was Peabody Park, which had been created in 1857 by Joshua Silvester, Simeon Putnam and John R. Langley.

Peabody Park was probably designed by Joshua Silvester (1803-1887), a local entrepreneur and friend of George Peabody. Silvester had traveled in Europe and acquired an interest in architecture and landscape architecture. His 1857 house is noted for its early use of Portland cement on the exterior. With an avid interest in landscape architecture, he is credited with the planning of both Peabody Park and Walnut Grove Cemetery across Sylvan Street. Late in his life he concentrated his energies in the sale and planting of shade trees throughout Danvers.

The first Peabody Institute in Danvers was a Gothic style building constructed in 1868-1869 and designed by Gridley J.F. Bryant. This building burned on July 2, 1890. George Peabody was no longer living but his legacy was maintained by the trustees who voted to appropriate money to construct a new building on the same site. Trustees Joseph W. Woodman, J. Frank Porter, and Calvin Putnam were appointed as a building committee and the Boston firm of Little & Browne was selected. It is likely that their choice was influenced by the fact that the firm's chief draftsman was a Danvers resident, Lester Couch. The two senior architects, Arthur Little and Edward Browne, were among the most well-trained and well-connected architects in Massachusetts. Arthur Little in particular had a well-established reputation for his work in residential design.

Both Little and Browne were known for their interest in early American architecture. The Peabody Institute is evidence of the firm's close study of buildings erected during the late 18th century. Much of the detailing on the exterior derives more from the Federal Period of architecture than the Georgian although distinctions between the two styles were rarely made in 1892. The most distinguishing feature on the building, its circular porticos, probably derived from Charles Bulfinch's 1792 design for the Joseph Barrell House, which may have been known to the architects through original plans or through its later transformation as the McLean Hospital before its demolition in 1896. In Danvers the firm designed renovations to the Endicott Estate in 1893, and the Danvers Savings Bank in 1923.

(continued)

National Register of Historic Places Continuation Sheet

Section number 8 Page 2

Peabody Institute
Danvers (Essex County) Massachusetts

Local accounts credit Lester Couch (1866-1939) with playing a major role in the design and construction. For example, the Danvers Mirror of August 27, 1892, stated that, ". . . the architecture of the building which, although it goes under the name of Little, Browne & Co., of Boston, is almost entirely the personal work of L. S. Couch, who has been greatly interested in the work, and to whom much credit is due." Couch had been born and raised in Danvers and joined Arthur Little in 1884 following graduation from high school. While training in Little's office he would have retained considerable experience in the study of early American architecture prior to beginning work on the Danvers library. The minutes of the trustees credit him for his work in supervising the construction and in the arrangement of rooms. Couch later became business manager of the firm. After Arthur Little's death in 1925 Couch designed primarily on his own and worked on a number of residential buildings in the Danvers area, as well as the Masonic Hall on High Street and the Danvers Historical Society Memorial Hall on Pager Street.

Construction began in 1891 and it was dedicated on Oct. 19, 1892. J.T. Wilson of Nahant was contractor. On the first floor was the library, while the second floor contained an auditorium with a capacity of 1,100. This auditorium served the town for a variety of uses, including lectures, theater productions, and high school graduation ceremonies. From the beginning the building served a major role in activities in the town. Costs for administering the library were gradually taken over by the Town of Danvers starting in 1940 with staff salaries. Ownership of the property was transferred from the Trustees to the town in 1978.

The building continues in use by the Town of Danvers, not only as a library but for other functions as well. Although the auditorium was eliminated and two floors added in 1981, the expanded library provided additional space without destroying the integrity of the exterior of the buildings. Included in the 1980-81 renovated space is the George B. Gordon Meeting Room, created for use by the citizens of the town. At the same time the Archival Center of the Danvers Historical Society was established in the building, creating one of the largest municipal archives in the region. It is significant that the major additions and alterations to this building were designed to achieve a minimal impact on the exterior of the building, which survives with all four elevations intact. This was accomplished because of the recognition given by the citizens of the town for this major architectural landmark.

(continued)

**United States Department of the Interior
National Park Service****National Register of Historic Places
Continuation Sheet**Section number 8 Page 3**Peabody Institute
Danvers (Essex County), Massachusetts**

Archaeological Significance

While seventeen prehistoric sites have been recorded in the Town of Peabody and most are located within one mile of the Peabody Institute Property, limited information is present relating to Native American subsistence and settlement patterns in the area. Few sites in the town have been systematically excavated or tested beyond the identification of their location making any surviving sites potentially significant. Prehistoric sites in this area can contribute important information on the significance of marine related and terrestrial based ecosystems in the subsistence patterns of Native Americans who occupied the area. Sites in this area can also play an important role in the study of sea level rise by identifying how site types changed through time as sea level rose and the point at which marine resources began to play an important role in Native life in this area.

Historic Archaeological resources identified above can also contribute to the significance of this nomination. Potential archaeological resources related to the Putnam Farm can contribute information on Peabody's agricultural history and earlier land use patterns on the nominated property. Structural remains and potential outbuildings related to the 1866 Gothic Library that burned can contribute information on the form of that building, its layout and mid 19th century construction techniques for institutional buildings. These resources can also document the extent to which the present structure was built on the site of the earlier library. Stratigraphic evidence of the 1890 library fire can also contribute important information by providing a stratigraphic/time marker to identify the extent to which the landscape was altered after the fire to construct the present structure.

(End)

National Register of Historic Places Continuation Sheet

Section number 9 Page 1

**Peabody Institute
Danvers (Essex County) Massachusetts**

9. MAJOR BIBLIOGRAPHIC REFERENCES

Annual Reports of the Trustees of the Peabody Institute, Danvers, 1868-1938.

Cook, Eleanor, "Lester Sanger Couch", unpublished manuscript, Danvers Historical Society Collections, 1964.

Damon, Frank C., "Peabody Institute Library", Salem Evening News, May 9, 1929.

Danvers Mirror, July 5, 1880; February 27, 1892; August 27, 1892; October 2, 1892.

History of the Peabody Institute, Danvers, Mass., 1852-1911, Boston, T. Todd, 1912.

Manuscript and Plan Collections, Peabody Institute Library, Danvers Archives Center.

Tapley, Harriet & Sylvester, "Joshua Silvester", Danvers Historical Society Collections, 1914.

(end)

Peabody Institute
Name of Property

Essex County, Massachusetts
County and State

10. Geographical Data

Acreage of Property 4.38 acres

UTM References See continuation sheet.

(Place additional UTM references on a continuation sheet)

1. 19	340600	4713710			
Zone	Easting	Northing	Zone	Easting	Northing
Zone	Easting	Northing	Zone	Easting	Northing

See continuation sheet

Verbal Boundary Description

(Describe the boundaries of the property on a continuation sheet.)

Boundary Justification

(Explain why the boundaries were selected on a continuation sheet.)

11. Form Prepared By

name/title Roger G. Reed, Preservation Consultant, with Betsy Friedberg, MHC, National Register Director

organization Massachusetts Historical Commission date October 1997

street & number 220 Morrissey Boulevard telephone 617-727-8470

city or town Boston state MA zip code 02125

Additional Documentation

Submit the following items with the completed form:

Continuation Sheets

Maps

A **USGS map** (7.5 or 15 minute series) indicating the property's location.

A **sketch map** for historic districts and properties having large acreage or numerous resources.

Photographs

Representative **black and white photographs** of the property.

Additional items (Check with the SHPO or FPO for any additional items)

Property Owner

(Complete this item at the request of the SHPO or FPO.)

name Town of Danvers

street & number Town Hall, 28 Sylvan Street telephone 617-777-0001

city or town Danvers state MA zip code 01923

Paperwork Reduction Act Statement: This information is being collected for applications to the National Register of Historic Places to nominate properties for listing or determine eligibility for listing, to list properties, and to amend existing listings. Response to this request is required to obtain a benefit in accordance with the National Historic Preservation Act, as amended (16 U.S.C. 470 et seq.).

Estimated Burden Statement: Public reporting burden for this form is estimated to average 18.1 hours per response including the time for reviewing instructions, gathering and maintaining data, and completing and reviewing the form. Direct comments regarding this burden estimate or any aspect of this form to the Chief, Administrative Services Division, National Park Service, P.O. Box 37127, Washington, DC 20013-7127; and the Office of Management and Budget, Paperwork Reductions Project (1024-0018), Washington, DC 20503.

National Register of Historic Places Continuation Sheet

Section number 10 Page 1

Peabody Institute
Danvers (Essex County) Massachusetts

10. GEOGRAPHICAL DATA

Verbal Boundary Description

The boundary of the nominated property is shown on lot 46 on the accompanying detail of the Danvers Assessors map sheet 51. This is the property described in deeds filed with the Essex County Registry of Deeds. The total area is 4.38 acres.

Boundary Justification

The boundary includes the entire parcel of land belonging to the town of Danvers. It includes the library building and the surrounding park bounded by Sylvan Street, Peabody Avenue, and Pond Street.

(end)

**United States Department of the Interior
National Park Service**

**National Register of Historic Places
Continuation Sheet**

Section number photos Page _____

Peabody Institute Library
Danvers (Essex), Massachusetts

PHOTOGRAPHS

All photographs by Richard Trask
Negatives at Danvers Archive Center

8 x 10 exterior photos

Photo #1	South elevation
Photo #2	South elevation, with underground addition
Photo #3	North elevation
Photo #4	North and east elevations
Photo #5	East and south elevations

UNITED STATES DEPARTMENT OF THE INTERIOR
NATIONAL PARK SERVICE

NATIONAL REGISTER OF HISTORIC PLACES
EVALUATION/RETURN SHEET

REQUESTED ACTION: NOMINATION

PROPERTY Peabody Institute
NAME:

MULTIPLE
NAME:

STATE & COUNTY: MASSACHUSETTS, Essex

DATE RECEIVED: 11/21/97 DATE OF PENDING LIST: 12/02/97
DATE OF 16TH DAY: 12/18/97 DATE OF 45TH DAY: 1/05/98
DATE OF WEEKLY LIST:

REFERENCE NUMBER: 97001559

NOMINATOR: STATE

REASONS FOR REVIEW:

APPEAL: N DATA PROBLEM: N LANDSCAPE: N LESS THAN 50 YEARS: N
OTHER: N PDIL: N PERIOD: N PROGRAM UNAPPROVED: N
REQUEST: N SAMPLE: N SLR DRAFT: N NATIONAL: N

COMMENT WAIVER: N

ACCEPT RETURN REJECT 12/22/97 DATE

ABSTRACT/SUMMARY COMMENTS:

Entered in the
National Register

RECOM./CRITERIA _____

REVIEWER _____ DISCIPLINE _____

TELEPHONE _____ DATE _____

DOCUMENTATION see attached comments Y/N see attached SLR Y/N



Peabody Institute Library
15 Sylvan Street
Danvers, MA 01923

Photo by Richard Trask, 1991
Negative at Danvers Archival Ctr.

Photo number 1 of 5
South elevation

PEABODY INSTITUTE LIBRARY

DANVER (ESSEX) MA

SOUTH ELEVATION 1991

RICHARD TRASK photo

NEG. AT DANVER ARCHIVAL CTR.



Peabody Institute Library
15 Sylvan Street
Danvers, MA 01923

Photo by Richard Trask, 1991
Negative at Danvers Archival Ctr.

Photo number 2 of 5
South elevation & underground add.

PEABODY INSTITUTE LIBRARY
DANVERS (ESSEX) MA

SOUTH ELEVATION, UNDERGROUND ADDITION

RICHARD TRASK PHOTO 1991

NEG. AT DANVERS ARCHIVAL CENTER



Peabody Institute Library
15 Sylvan Street
Danvers, MA 01923

Photo by Richard Trask, 1991
Negative at Danvers Archival Ctr.

Photo number 3 of 5
North elevation

PEABODY INST. LIBRARY
DANVERS (ESSEX) MA

NORTH ELEVATION 1991

RICHARD TRASK photo

NEG. at DANVERS ARCHIVAL CENTER



FOUNDED A.D.
PEABODY INSTITUTE

MDCCCLXVII



Peabody Institute Library
15 Sylvan Street
Danvers, MA 01923

Photo by Richard Trask, 1991
Negative at Danvers Archival Ctr.

Photo number 4 of 5
North and east elevation

PEABODY INSTITUTE OF DANVER
DANVER (ESSEX), MA

NORTH, EAST ELEVATION

RICHARD TRASK photo
1991

neg. at DANVER ARCHIVAL CENTER



Peabody Institute Library
15 Sylvan Street
Danvers, MA 01923

Photo by Richard Trask, 1991
Negative at Danvers Archival Ctr.

Photo number 5 of 5
East and south elevation

PEABODY INSTIT. LIBRARY
DANVERS (ESSEX CO.) MA

EAST + SOUTH ELEVATION

1991

RICHARD TRASK PHOTO

NEGATIVE AT DANVERS ARCHIVAL CTR.

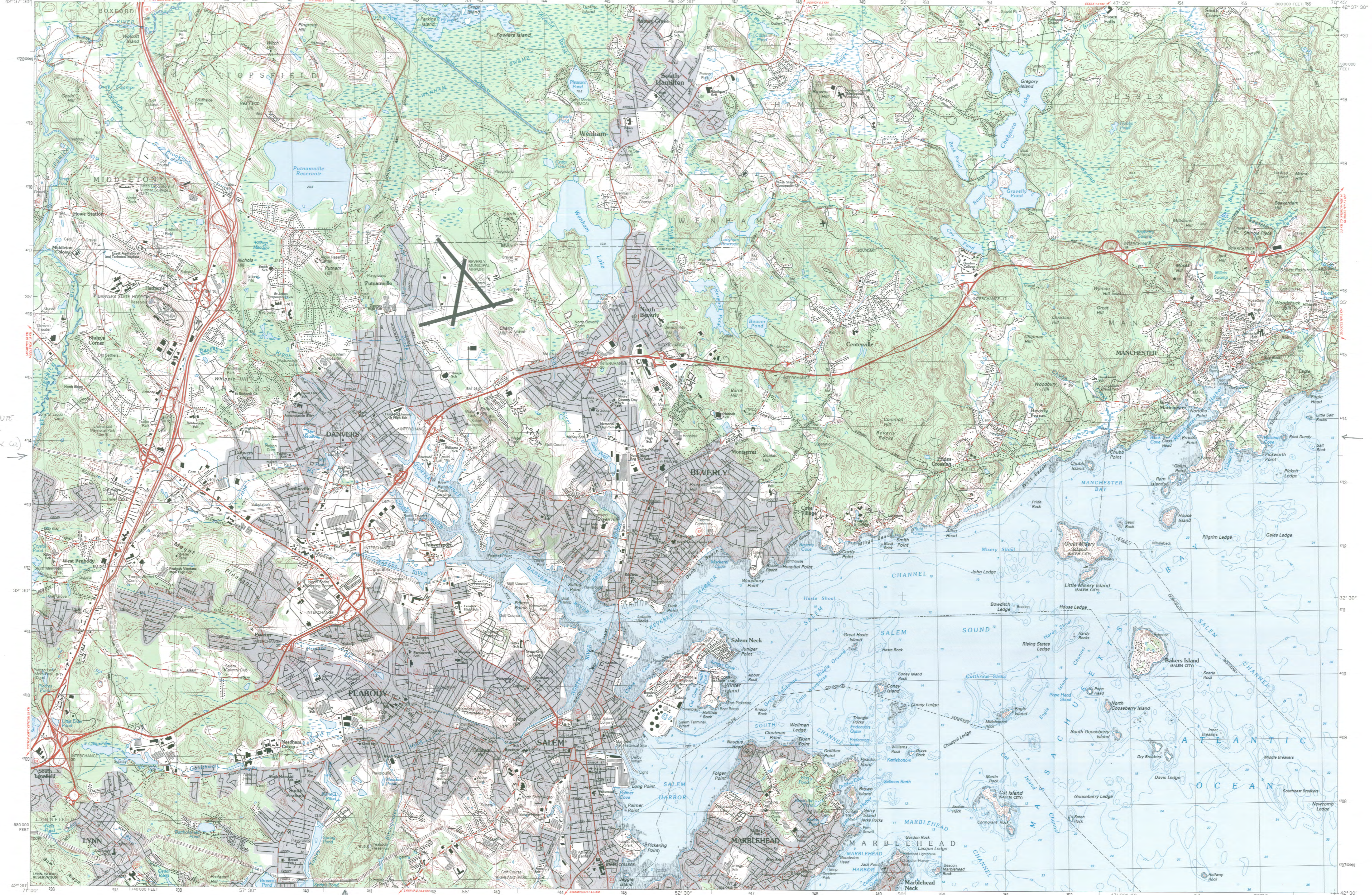
Salem
MASSACHUSETTS

1:25 000-scale metric topographic map

7.5 X 15 MINUTE QUADRANGLE SHOWING

- Contours and elevations in meters
- Highways, roads and other manmade structures
- Water features
- Woodland areas
- Geographic names

1985



PEABODY INSTITUTE
 OF DANVERS
 DANVERS (ESSEX CO.)
 MA →
 Zone
 19
 E 340600
 N 4713710

Produced by the United States Geological Survey in cooperation with Massachusetts Department of Public Works
 Control by USGS, NOS/NOAA, and Commonwealth of Massachusetts agencies
 Compiled by photogrammetric methods from aerial photographs taken 1978. Field checked 1979. Map edited 1985
 Supersedes Salem and Marblehead North 1:25,000-scale maps dated 1970
 Selected hydrographic data compiled from NOS charts 13275 and 13276 (1981). This information is not intended for navigational purposes
 Projection and 1000-meter grid: Universal Transverse Mercator, zone 19
 18000-foot grid scale based on Massachusetts coordinate system, mainland zone
 1927 North American datum
 To place on the predicted North American Datum 1983 move the projection lines 6 meters south and 42 meters west as shown by dashed corner ticks
 There may be private inholdings within the boundaries of the National or State reservations shown on this map

CONTOUR INTERVAL 3 METERS
 NATIONAL GEODETIC VERTICAL DATUM OF 1929 CONTROL ELEVATIONS SHOWN TO THE NEAREST 0.1 METER OTHER ELEVATIONS SHOWN TO THE NEAREST 0.5 METER DEPTH CURVES AND SOUNDINGS IN METERS DATUM IS MEAN LOW WATER
 THE RELATIONSHIP BETWEEN THE TWO DATUMS IS VARIABLE AND BEING SHOWN REPRESENTS THE APPROXIMATE LINE OF MEAN HIGH WATER
 THE MEAN RANGE OF TIDE IS APPROXIMATELY 2.7 METERS

THIS MAP COMPLES WITH NATIONAL MAP ACCURACY STANDARDS

Meters	Feet
1	3.2808
2	6.5617
3	9.8425
4	13.1234
5	16.4042
6	19.6850
7	22.9659
8	26.2467
9	29.5275
10	32.8084

To convert meters to feet multiply by 3.2808
 To convert feet to meters multiply by 0.3048

UTM grid convergence (M) at center of map
 Diagram is approximate

ADJOINING MAPS	1	2	3	4	5	6	7	8
1 Lawrence								
2 Ipswich								
3 Rockport								
4 Haverhill								
5 Gloucester								
6 Boston North								
7 Lynn								
8								

FOR SALE BY U.S. GEOLOGICAL SURVEY
 DENVER, COLORADO 80225, OR RESTON, VIRGINIA 22092

Topographic Map Symbols

- Primary highway, hard surface
- Secondary highway, hard surface
- Light-duty road, hard or improved surface
- Unimproved road, trail
- Route marker: interstate; U.S. State
- Railroad: standard gauge, narrow gauge
- Bridge: drawbridge
- Footbridge, overpass, underpass
- Boundary: National, with monument; State; County, parish; Civil township, precinct, district; Incorporated city, village, town; National or State reservation, small park; Land grant with monument; Bond section corner; U.S. public lands survey: range, township, section; Range, township, section line: location approximate; Fence or field line; Power transmission line; heated tower; Dam; dam with lock; Cemetery; grave; Conspicuous, picnic area; U.S. location monument; Well; water well; spring; Mine shaft; prospect; shaft or cave; Control: horizontal station; vertical station; spot elevation; Contours: index, intermediate, supplementary, depression; Contoured surface: spot, peak, sink, saddle; Bathymetric contours: index, intermediate; Perennial lake and stream; intermittent lake and stream; Rapids, large and small; falls, large and small; Saltmarsh; marsh; swamp; Land subject to controlled inundation; wetland; Scrub; mangrove; Orchard; vineyard



ASSESSORS MAP
DANVERS

SCALE IN FEET

42	43	44
50	51	52

FOR ASSESSMENT PURPOSES ONLY
NOT FOR PROPERTY CONVEYANCES

COL - EAST INC.
BOSTON & PITTSFIELD

PEABODY INSTITUTE
DANVERS (ESSEX CO) MA



The Commonwealth of Massachusetts
William Francis Galvin, Secretary of the Commonwealth
Massachusetts Historical Commission

November 14, 1997

Ms. Carol Shull
National Register of Historic Places
Department of the Interior
National Park Service
Mail Stop 2280, Suite 400
1849 C Street, NW
Washington, D. C. 20240

Dear Ms. Shull:

Enclosed please find the following nomination form:

Peabody Institute, 15 Sylvan Street, Danvers (Essex Co.), MA 01923

The nomination has been voted eligible by the State Review Board and has been signed by the State Historic Preservation Officer. The owners of the property within the district were notified of pending State Review Board consideration 30 to 75 days before the meeting and were afforded the opportunity to comment.

Sincerely,

A handwritten signature in cursive script that reads "Betsy Friedberg".

Betsy Friedberg
National Register Director
Massachusetts Historical Commission

enclosure

cc: David Kayser, Danvers Preservation Commission
Patricia C. Frazier, Chair, Danvers Board of Selectmen
Richard B. Trask, Peabody Institute of Danvers
Douglas Rendell, Librarian, Peabody Institute of Danvers
Roger Reed, Preservation Consultant

220 Morrissey Boulevard, Boston, Massachusetts 02125 · (617) 727-8470
Fax: (617) 727-5128 TDD: 1-800-392-6090
Website: www.magnet.state.ma.us/sec/mhc