

United States Department of the Interior
National Park Service

National Register of Historic Places
Registration Form

RECEIVED
AUG 13 1990

NATIONAL
REGISTER

This form is for use in nominating or requesting determinations of eligibility for individual properties or districts. See instructions in *Guidelines for Completing National Register Forms* (National Register Bulletin 16). Complete each item by marking "x" in the appropriate box or by entering the requested information. If an item does not apply to the property being documented, enter "N/A" for "not applicable." For functions, styles, materials, and areas of significance, enter only the categories and subcategories listed in the instructions. For additional space use continuation sheets (Form 10-900a). Type all entries.

1. Name of Property Seaside Village Historic District (use for publication)
historic name Seaside Village
other names/site number Crane Development
Wartime Emergency Housing In Bridgeport, 1916 - 1920 (Multiple Property Form)

2. Location
street & number See Continuation Sheet not for publication N/A
city, town Bridgeport vicinity
state Connecticut code CT county Fairfield code 001 zip code 06604

3. Classification

Ownership of Property	Category of Property	Number of Resources within Property	
<input checked="" type="checkbox"/> private	<input type="checkbox"/> building(s)	Contributing	Noncontributing
<input type="checkbox"/> public-local	<input checked="" type="checkbox"/> district	<u>58</u>	<u>0</u> buildings
<input type="checkbox"/> public-State	<input type="checkbox"/> site	_____	_____ sites
<input type="checkbox"/> public-Federal	<input type="checkbox"/> structure	_____	_____ structures
	<input type="checkbox"/> object	_____	_____ objects
		<u>58</u>	<u>0</u> Total

Name of related multiple property listing: Wartime Emergency Housing In Bridgeport
Number of contributing resources previously listed in the National Register 0

4. State/Federal Agency Certification

As the designated authority under the National Historic Preservation Act of 1966, as amended, I hereby certify that this nomination request for determination of eligibility meets the documentation standards for registering properties in the National Register of Historic Places and meets the procedural and professional requirements set forth in 36 CFR Part 60. In my opinion, the property meets does not meet the National Register criteria. See continuation sheet.
Signature of certifying official John W. Shanahan, State Historic Preservation Officer Date 8/9/90
State or Federal agency and bureau _____

In my opinion, the property meets does not meet the National Register criteria. See continuation sheet.
Signature of commenting or other official _____ Date _____
State or Federal agency and bureau _____

5. National Park Service Certification

I, hereby, certify that this property is:
 entered in the National Register. Beth L. Savage 9-26-90
 See continuation sheet.
 determined eligible for the National Register. See continuation sheet.
 determined not eligible for the National Register.
 removed from the National Register.
 other, (explain:) _____
Signature of the Keeper _____ Date of Action _____

6. Function or Use

Historic Functions (enter categories from instructions)
Domestic/multiple dwelling

Current Functions (enter categories from instructions)
Domestic/multiple dwelling

7. Description

Architectural Classification
(enter categories from instructions)Late 19th and 20th Century Revivals:
Colonial Revival

Materials (enter categories from instructions)

foundation Granite
walls Brick

roof Roll asphalt
other

Describe present and historic physical appearance.

Located on the east side of Iranistan Avenue between South Street and Burnham Street and encompassing Albert Square, Alsace Street, Cole Street, Flanders Street, Forest Court, Forest Street, and Sims Street, Seaside Village forms a tight enclave in a mixed-use residential/commercial area in the southwest section of Bridgeport in close proximity to Bridgeport University and Long Island Sound.

Seaside Village is one of the housing complexes constructed by the Bridgeport Housing Company during World War I. Roughly two-thirds of the original project was built. It consists of 58 one-and-one-half and two-and-one-half-story structures (Photographs 1 through 5) containing some 200 single-family units arranged in rows and clusters that were designed and placed with reference to a carefully prepared, irregular site plan featuring slightly curved streets, cul-de-sacs, a small green or square, and spacious interior courts, yards, and gardens. The buildings are all of brick laid in an English bond pattern and are topped by slate-covered gable roofs. Small gable dormers surfaced with clapboards punctuate some of the roofs. They feature oriel windows, and some of the 6/6 windows topped by brick arches articulated by double header courses are flanked by wood shutters. The various classically inspired door surrounds range from full entablatures to open-bed pediments encompassing blind fanlights. The predominant order used is Tuscan Doric. While the steep pitches of the roofs represent an attempt to adapt an early eighteenth-century southern form to a northern climate, the careful massing of the buildings, their Colonial Revival design vocabulary, and studied placement along picturesque, tree-lined streets all consciously recall Old New England villages, where outbuildings and extensions have been added over time to the original houses.

Alterations to this complex are slight and are comprised of replacement jealousy sash in the bay windows and an occasional aluminum storm sash over existing wood sash. Some of the houses have small metal awnings that have obscured the entry detail but have not removed or destroyed any original detail.

8. Statement of Significance

Certifying official has considered the significance of this property in relation to other properties:

nationally statewide locally

Applicable National Register Criteria A B C D

Criteria Considerations (Exceptions) A B C D E F G

Areas of Significance (enter categories from instructions)

Community Planning and Development
Architecture
Social History

Period of Significance

1916 - 1920

Significant Dates

1916 - 1920

Cultural Affiliation

N/A

Significant Person

N/A

Architect/Builder

R. Clipston Sturgis and Skinner & Walker
and Arthur A. Shurtleff

State significance of property, and justify criteria, criteria considerations, and areas and periods of significance noted above.

Seaside Village, known as the Crane Development when built, is significant due to its direct association with the U.S. Housing Corporation's efforts to provide emergency housing for workers manning the factories of the city's war-related industries. It is a good example of the first government-subsidized housing built in Bridgeport. It survives with surprising architectural integrity as the last of four U.S. Housing Corporation projects in Bridgeport. It is a local legacy reflecting the high design quality and first national housing standards achieved through the earliest government-owned housing program in the U. S. It is an excellent example of the collaborative works of R. Clipston Sturgis, Skinner and Walker, and planner Arthur Shurtleff, who created a well-conceived and well-executed model housing complex that maintains a distinct urban character incorporating middle-class housing tastes with English Garden City and American Garden Suburb tenets. As built, the complex presents a strong visual presence and prominence derived from a cohesive site plan, shared materials, and similar scale, proportion and design quality that set it apart from its immediate urban industrial context. It is also significant for its association with Bridgeport's most intense period of growth as housing for workers involved in defense work at the nearby Crane Company.

See continuation sheet

9. Major Bibliographical References

See National Register of Historic Places Multiple Property Documentation Form
Wartime Emergency Housing In Bridgeport, 1916 - 1920

Previous documentation on file (NPS): N/A

- preliminary determination of individual listing (36 CFR 67)
has been requested
- previously listed in the National Register
- previously determined eligible by the National Register
- designated a National Historic Landmark
- recorded by Historic American Buildings
Survey # _____
- recorded by Historic American Engineering
Record # _____

See continuation sheet

Primary location of additional data:

- State historic preservation office
- Other State agency
- Federal agency
- Local government
- University
- Other

Specify repository:

Bridgeport City Archives

10. Geographical Data

Acreage of property 16.5 Acres

UTM References

A	1, 8	6, 5, 1, 0, 4, 0	4, 5, 5, 8, 4, 4, 0
	Zone	Easting	Northing
C	1, 8	6, 5, 1, 1, 0, 0	4, 5, 5, 8, 7, 8, 0

B	1, 8	6, 5, 0, 9, 0, 0	4, 5, 5, 8, 5, 8, 0
	Zone	Easting	Northing
D	1, 8	6, 5, 1, 3, 0, 0	4, 5, 5, 8, 5, 1, 0

See continuation sheet

Verbal Boundary Description

See Figure # 1 (Map)

See continuation sheet

Boundary Justification

See continuation sheet

11. Form Prepared By

name/title Steven Bedford and Nora Lucas, Reviewed by John Herzan, National Register
organization Preservation Computer Services date June 30, 1989 Coordinator
street & number 306 Beach Avenue telephone (914) 698 5440
city or town Mamaroneck state New York zip code 10543

**United States Department of the Interior
National Park Service**

Multiple Property Form
Wartime Emergency Housing In Bridgeport,
1916 - 1920

**National Register of Historic Places
Continuation Sheet**

Section number 2 Page 1

Seaside Village Inventory of Structures

Format:

Contributing (C) or Noncontributing (NC), Address

(C) 3 Albert Square
(C) 15 - 25 Albert Square
(C) 29 - 31 Albert Square
(C) 100 Alsace St.
(C) 107 - 129 Alsace St.
(C) 120 Alsace St.
(C) 128 - 152 Alsace St.
(C) 139 - 163 Alsace St.
(C) 168 - 178 Alsace St.
(C) 169 - 181 Alsace St.
(C) 200 - 208 Alsace St.
(C) 201 - 207 Alsace St.
(C) 209 - 217 Alsace St.
(C) 216 - 226 Alsace St.
(C) 219 - 225 Alsace St.
(C) 15 - 25 Burnham St.
(C) 16 - 18 Burnham St.
(C) 26 Burnham St.
(C) 32 - 42 Burnham St.
(C) 45 Burnham St.
(C) 46 Burnham St.
(C) 54 - 66 Burnham St.
(C) 57 - 73 Burnham St.
(C) 93 - 127 Burnham St.
(C) 122 - 132 Burnham St.
27 Center St.
(C) 11 - 21 Cole St.
(C) 16 Cole St.
(C) 20 - 50 Cole St.
(C) 29 - 45 Cole St.
(C) 55 - 71 Cole St.
(C) 60 - 82 Cole St.
(C) 87 Cole St.
(C) 90 Cole St.
(C) 98 Flanders St.
(C) 114 - 126 Flanders St.
(C) 132 - 138 Flanders St.
(C) 158 - 174 Flanders St.

United States Department of the Interior
National Park Service

Multiple Property Form
Wartime Emergency Housing in Bridgeport,
1916 - 1920

National Register of Historic Places Continuation Sheet

Section number 2 Page 2

Seaside Village Continued

- (C) 165 - 177 Flanders St.
- (C) 194 - 198 Flanders St.
- (C) 195 - 203 Flanders St.
- (C) 4 Forest Court
- (C) 21 - 37 Forest Court
- (C) 24 - 26 Forest Court
- (C) 76 - 90 Forest St.
- (C) 77 - 99 Forest St.
- (C) 239 - 241 Iranistan Avenue
- (C) 263 - 271 Iranistan Avenue
- (C) 285 - 291 Iranistan Avenue
- (C) 321 - 329 Iranistan Avenue
- (C) 337 - 347 Iranistan Avenue
- (C) 367 Iranistan Avenue
- (C) 373 - 387 Iranistan Avenue
- (C) 391 Iranistan Avenue
- (C) 419 - 439 Iranistan Avenue
- (C) 3 - 29 Little St.
- (C) 14 - 24 Little St.
- (C) 2 Sims St.
- (C) 10 - 26 Sims St.
- (C) 17 Sims St.
- (C) 25 - 43 Sims St.
- (C) 51 - 75 Sims St.
- (C) 54 - 64 Sims St.
- (C) 66 - 76 Sims St.
- (C) 78 - 82 Sims St.
- (C) 87 - 103 Sims St.
- (C) 90 - 102 Sims St.
- (C) 104 - 114 Sims St.
- (C) 116 - 124 Sims St.
- (C) 117 Sims St.
- (C) 901 - 915 South St.

United States Department of the Interior
National Park Service

Multiple Property Form
Wartime Emergency Housing In Bridgeport,
1916 - 1920

National Register of Historic Places Continuation Sheet

Section number 2 Page 3

Seaside Village Continued

This complex has more than 50 properties.

Note that although the above list contains 70 entries, several buildings have more than one address, reducing the individual building tally to 58 contributing buildings.

Number 3 Albert Square, 100 Alsace Street and 93-127 Burnham Street represent one building

Numbers 120 Alsace Street and 122-132 Burnham Street represent one building

Numbers 45 Burnham Street and 77-19 Forest Street represent one building.

Numbers 57-73 Burnham Street and 98 Flanders Street represent one building.

Numbers 16 Cole Street and 367 Flanders Street represent one building.

Numbers 87 Cole Street and 132 -138 Flanders Street represent one building.

Numbers 90 Cole Street, 158-174 Flanders Street and 117 Sims Street represent one building

Numbers 4 Forest Court and 263-271 Iranistan Avenue represent one building.

Numbers 391 Iranistan Avenue and 17 Sims Street represent one building.

Numbers 419-439 Iranistan Avenue and 2 Sims Street represent one building

**United States Department of the Interior
National Park Service**

Multiple Property Form
Wartime Emergency Housing in Bridgeport,
1916-1920

National Register of Historic Places Continuation Sheet

Section number 2 Page 4

Seaside Village Historic District is owned by The Bridgeport Mutual Management Corporation
240 Fairfield Avenue
Suite 309
Bridgeport, CT 06604

**United States Department of the Interior
National Park Service**

Multiple Property Form
Wartime Emergency Housing In Bridgeport,
1916 - 1920

**National Register of Historic Places
Continuation Sheet**

Section number 7 Page 1

Seaside Village Inventory of Structures

Format:

Contributing (C) or Noncontributing (NC), Address, Date, Style,
Architect/Builder

- (C) 3 Albert Square, 1918, Colonial Revival, Sturgis; Skinner & Walker; Shurtleff
- (C) 15 - 25 Albert Square, 1918, Colonial Revival, Sturgis; Skinner & Walker; Shurtleff
- (C) 29 - 31 Albert Square, 1918, Colonial Revival, Sturgis; Skinner & Walker; Shurtleff
- (C) 100 Alsace St., 1918, Colonial Revival, Sturgis; Skinner & Walker; Shurtleff
- (C) 107 - 129 Alsace St., 1918, Colonial Revival, Sturgis; Skinner & Walker; Shurtleff
- (C) 120 Alsace St., 1918, Colonial Revival, Sturgis; Skinner & Walker; Shurtleff
- (C) 128 - 152 Alsace St., 1918, Colonial Revival, Sturgis; Skinner & Walker; Shurtleff
- (C) 139 - 163 Alsace St., 1918, Colonial Revival, Sturgis; Skinner & Walker; Shurtleff
- (C) 168 - 178 Alsace St., 1918, Colonial Revival, Sturgis; Skinner & Walker; Shurtleff
- (C) 169 - 181 Alsace St., 1918, Colonial Revival, Sturgis; Skinner & Walker; Shurtleff
- (C) 200 - 208 Alsace St., 1918, Colonial Revival, Sturgis; Skinner & Walker; Shurtleff
- (C) 201 - 207 Alsace St., 1918, Colonial Revival, Sturgis; Skinner & Walker; Shurtleff
- (C) 209 - 217 Alsace St., 1918, Colonial Revival, Sturgis; Skinner & Walker; Shurtleff
- (C) 216 - 226 Alsace St., 1918, Colonial Revival, Sturgis; Skinner & Walker; Shurtleff
- (C) 219 - 225 Alsace St., 1918, Colonial Revival, Sturgis; Skinner & Walker; Shurtleff
- (C) 15 - 25 Burnham St., 1918, Colonial Revival, Sturgis; Skinner & Walker; Shurtleff
- (C) 16 - 18 Burnham St., 1918, Colonial Revival, Sturgis; Skinner & Walker; Shurtleff
- (C) 26 Burnham St., 1918, Colonial Revival, Sturgis; Skinner & Walker; Shurtleff
- (C) 32 - 42 Burnham St., 1918, Colonial Revival, Sturgis; Skinner & Walker; Shurtleff
- (C) 45 Burnham St., 1918, Colonial Revival, Sturgis; Skinner & Walker; Shurtleff
- (C) 46 Burnham St., 1918, Colonial Revival, Sturgis; Skinner & Walker; Shurtleff
- (C) 54 - 66 Burnham St., 1918, Colonial Revival, Sturgis; Skinner & Walker; Shurtleff
- (C) 57 - 73 Burnham St., 1918, Colonial Revival, Sturgis; Skinner & Walker; Shurtleff
- (C) 93 - 127 Burnham St., 1918, Colonial Revival, Sturgis; Skinner & Walker; Shurtleff
- (C) 122 - 132 Burnham St., 1918, Colonial Revival, Sturgis; Skinner & Walker; Shurtleff
- (C) 11 - 21 Cole St., 1918, Colonial Revival, Sturgis; Skinner & Walker; Shurtleff
- (C) 16 Cole St., 1918, Colonial Revival, Sturgis; Skinner & Walker; Shurtleff
- (C) 20 - 50 Cole St., 1918, Colonial Revival, Sturgis; Skinner & Walker; Shurtleff
- (C) 29 - 45 Cole St., 1918, Colonial Revival, Sturgis; Skinner & Walker; Shurtleff
- (C) 55 - 71 Cole St., 1918, Colonial Revival, Sturgis; Skinner & Walker; Shurtleff
- (C) 60 - 82 Cole St., 1918, Colonial Revival, Sturgis; Skinner & Walker; Shurtleff
- (C) 87 Cole St., 1918, Colonial Revival, Sturgis; Skinner & Walker; Shurtleff
- (C) 90 Cole St., 1918, Colonial Revival, Sturgis; Skinner & Walker; Shurtleff
- (C) 98 Flanders St., 1918, Colonial Revival, Sturgis; Skinner & Walker; Shurtleff
- (C) 114 - 126 Flanders St., 1918, Colonial Revival, Sturgis; Skinner & Walker; Shurtleff
- (C) 132 - 138 Flanders St., 1918, Colonial Revival, Sturgis; Skinner & Walker; Shurtleff
- (C) 158 - 174 Flanders St., 1918, Colonial Revival, Sturgis; Skinner & Walker; Shurtleff

**United States Department of the Interior
National Park Service**

Multiple Property Form
Wartime Emergency Housing In Brigeport,
1916 - 1920

**National Register of Historic Places
Continuation Sheet**

Section number 7 Page 2

Seaside Village Continued

- (C) 165 - 177 Flanders St., 1918, Colonial Revival, Sturgis; Skinner & Walker; Shurtleff
- (C) 194 - 198 Flanders St., 1918, Colonial Revival, Sturgis; Skinner & Walker; Shurtleff
- (C) 195 - 203 Flanders St., 1918, Colonial Revival, Sturgis; Skinner & Walker; Shurtleff
- (C) 4 Forest Court, 1918, Colonial Revival, Sturgis; Skinner & Walker; Shurtleff
- (C) 21 - 37 Forest Court, 1918, Colonial Revival, Sturgis; Skinner & Walker; Shurtleff
- (C) 24 - 26 Forest Court, 1918, Colonial Revival, Sturgis; Skinner & Walker; Shurtleff
- (C) 76 - 90 Forest St., 1918, Colonial Revival, Sturgis; Skinner & Walker; Shurtleff
- (C) 77 - 99 Forest St., 1918, Colonial Revival, Sturgis; Skinner & Walker; Shurtleff
- (C) 239 - 241 Iranistan Avenue, 1918, Colonial Revival, Sturgis; Skinner & Walker; Shurtleff
- (C) 263 - 271 Iranistan Avenue, 1918, Colonial Revival, Sturgis; Skinner & Walker; Shurtleff
- (C) 285 - 291 Iranistan Avenue, 1918, Colonial Revival, Sturgis; Skinner & Walker; Shurtleff
- (C) 321 - 329 Iranistan Avenue, 1918, Colonial Revival, Sturgis; Skinner & Walker; Shurtleff
- (C) 337 - 347 Iranistan Avenue, 1918, Colonial Revival, Sturgis; Skinner & Walker; Shurtleff
- (C) 367 Iranistan Avenue, 1918, Colonial Revival, Sturgis; Skinner & Walker; Shurtleff
- (C) 373 - 387 Iranistan Avenue, 1918, Colonial Revival, Sturgis; Skinner & Walker; Shurtleff
- (C) 391 Iranistan Avenue, 1918, Colonial Revival, Sturgis; Skinner & Walker; Shurtleff
- (C) 419 - 439 Iranistan Avenue, 1918, Colonial Revival, Sturgis; Skinner & Walker; Shurtleff
- (C) 3 - 29 Little St., 1918, Colonial Revival, Sturgis; Skinner & Walker; Shurtleff
- (C) 14 - 24 Little St., 1918, Colonial Revival, Sturgis; Skinner & Walker; Shurtleff
- (C) 2 Sims St., 1918, Colonial Revival, Sturgis; Skinner & Walker; Shurtleff
- (C) 10 - 26 Sims St., 1918, Colonial Revival, Sturgis; Skinner & Walker; Shurtleff
- (C) 17 Sims St., 1918, Colonial Revival, Sturgis; Skinner & Walker; Shurtleff
- (C) 25 - 43 Sims St., 1918, Colonial Revival, Sturgis; Skinner & Walker; Shurtleff
- (C) 51 - 75 Sims St., 1918, Colonial Revival, Sturgis; Skinner & Walker; Shurtleff
- (C) 54 - 64 Sims St., 1918, Colonial Revival, Sturgis; Skinner & Walker; Shurtleff
- (C) 66 - 76 Sims St., 1918, Colonial Revival, Sturgis; Skinner & Walker; Shurtleff
- (C) 78 - 82 Sims St., 1918, Colonial Revival, Sturgis; Skinner & Walker; Shurtleff
- (C) 87 - 103 Sims St., 1918, Colonial Revival, Sturgis; Skinner & Walker; Shurtleff
- (C) 90 - 102 Sims St., 1918, Colonial Revival, Sturgis; Skinner & Walker; Shurtleff
- (C) 104 - 114 Sims St., 1918, Colonial Revival, Sturgis; Skinner & Walker; Shurtleff
- (C) 116 - 124 Sims St., 1918, Colonial Revival, Sturgis; Skinner & Walker; Shurtleff
- (C) 117 Sims St., 1918, Colonial Revival, Sturgis; Skinner & Walker; Shurtleff
- (C) 901 - 915 South St., 1918, Colonial Revival, Sturgis; Skinner & Walker; Shurtleff

United States Department of the Interior
National Park Service

Multiple Property Form
Wartime Emergency Housing In Bridgeport,
1916 - 1920

National Register of Historic Places Continuation Sheet

Section number 10 Page 1

Seaside Village

UTM References

A 18 651040 4558440
B 18 650900 4558580
C 18 651100 4558780
D 18 651300 4558510

Boundary Justification

The Seaside Village Historic District is located within a clearly defined neighborhood of Bridgeport outlined by the boundaries of the original land purchased by the United States Housing Corporation in 1918. Distinctive architectural features, including overall building design, slate gable roofs, and brick construction, identify the buildings associated with the United States Housing Corporation development. Landscape features, such as sidewalks, asymmetrical siting, and flowering trees, add cohesiveness to the district. The edges of the district are bordered by nineteenth and twentieth-century residential and commercial construction.

**United States Department of the Interior
National Park Service**

Multiple Property Form
Wartime Emergency Housing In Bridgeport
1916 - 1920

**National Register of Historic Places
Continuation Sheet**

Section number Photos Page 1

Seaside Village Photographs

BP/1/7/89

Bridgeport, Connecticut
Seaside Village
#87 - 103 Simes Street, looking south
Photograph # 1

BP/1/8/89

Bridgeport, Connecticut
Seaside Village
Courtyard off Simes Street (#96 - 124), looking west
Photograph # 2

BP/1/9/89

Bridgeport, Connecticut
Seaside Village
114 - 98 Simes Street
Photograph # 3

BP/1/10/89

Bridgeport, Connecticut
Seaside Village
#163 - 181 Alsace Street, looking west
Photograph # 4

BP/1/11/89

MULTIPLE PROPERTY FORM. WARTIME EMERGENCY HOUSING IN BRIDGEPORT, 1916 - 1920
Bridgeport, Connecticut
Seaside Village
Courtyard at 213 - 223 Alsace Street
Photograph # 5

United States Department of the Interior
National Park Service

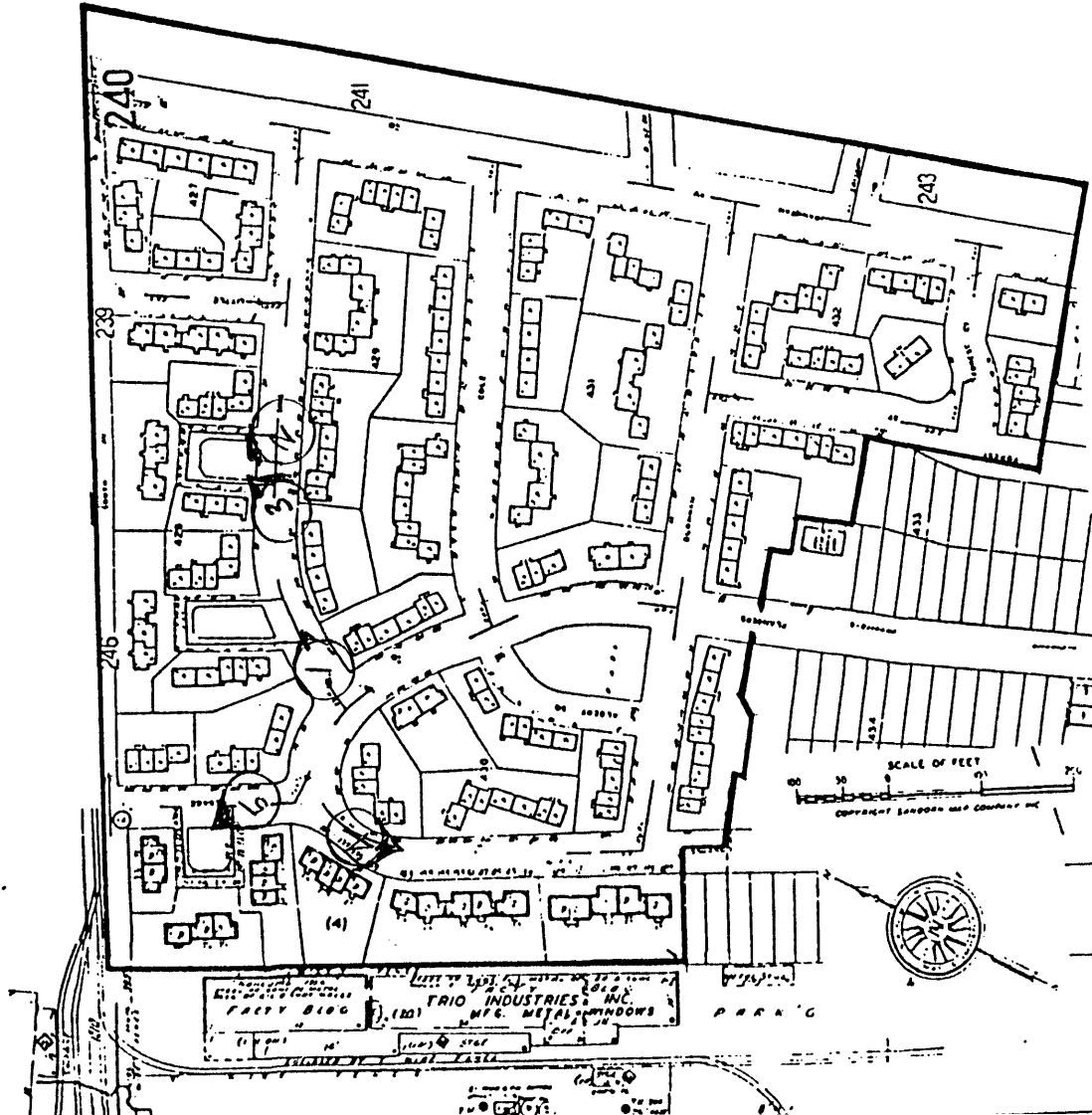
Multiple Property Form
Wartime Emergency Housing In Bridgeport
1916 - 1920

National Register of Historic Places Continuation Sheet

Map & Photo

Section number Key Page 1

Figure #1
Seaside Village
Photo Keyand Boundary Map



United States Department of the Interior
National Park Service

Multiple Property Form
Wartime Emergency Housing In Bridgeport
1916 - 1920

National Register of Historic Places Continuation Sheet

Section number Plan Page 1

Seaside Village, Bridgeport, Connecticut
Report of the United States Housing Corporation p. 125

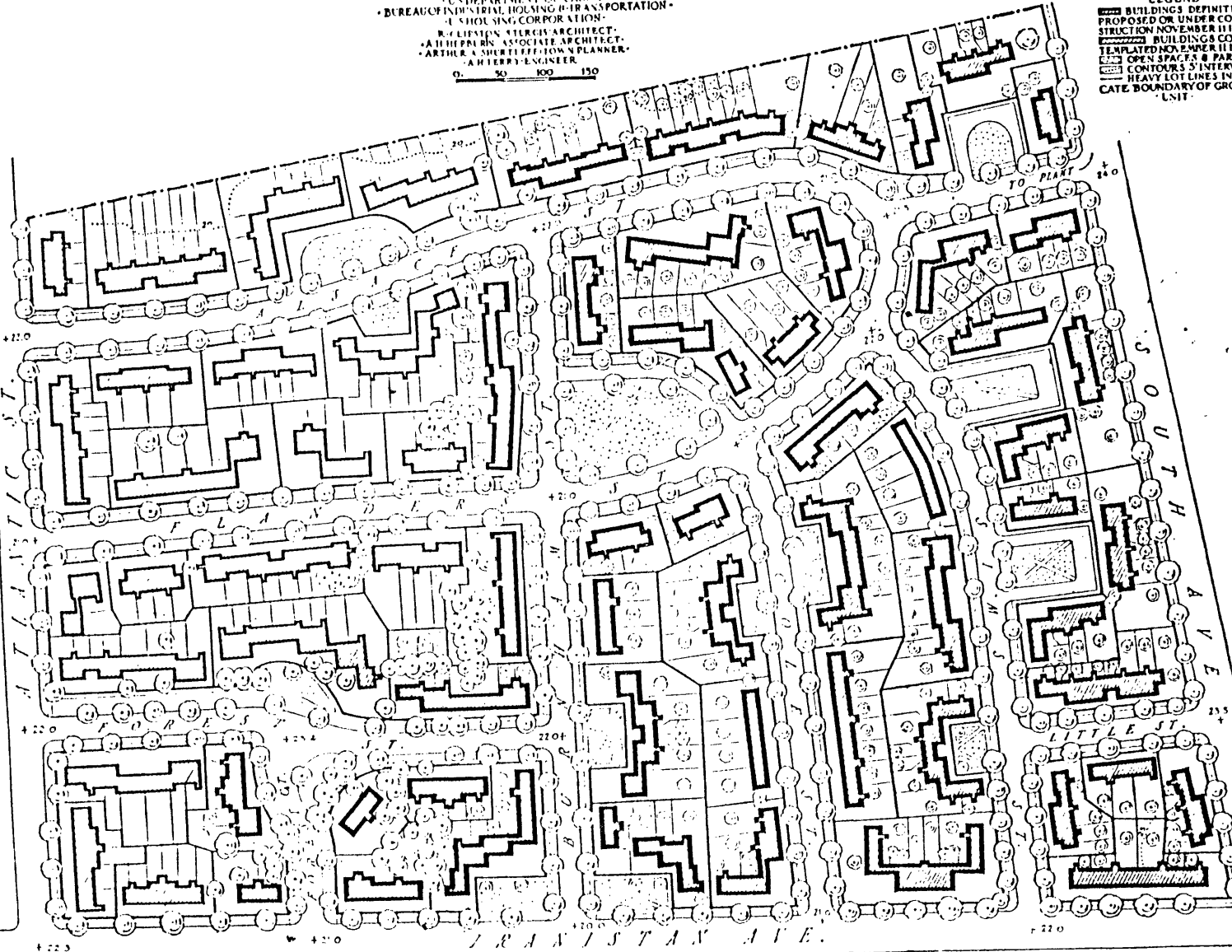
CRANE TRACT HOUSING PROJECT AT BRIDGEPORT, CONNECTICUT

U. S. DEPARTMENT OF LABOR
BUREAU OF INDUSTRIAL HOUSING & TRANSPORTATION
U. S. HOUSING CORPORATION
REGULATIONS BY STEPHEN ARCHITECT
ARTHUR HERRICK ASSOCIATE ARCHITECT
ARTHUR A. SHURTLEFF TOWN PLANNER
A. H. TERRY ENGINEER

0 50 100 150



LEGEND
[Symbol] BUILDINGS DEFINITELY PROPOSED OR UNDER CONSTRUCTION NOVEMBER 11 1916
[Symbol] BUILDINGS CONTEMPLATED NOVEMBER 11 1916
[Symbol] OPEN SPACES & PARKS
[Symbol] CONTOURS 5' INTERVAL
HEAVY LOT LINES INDICATE BOUNDARY OF GROUP UNIT



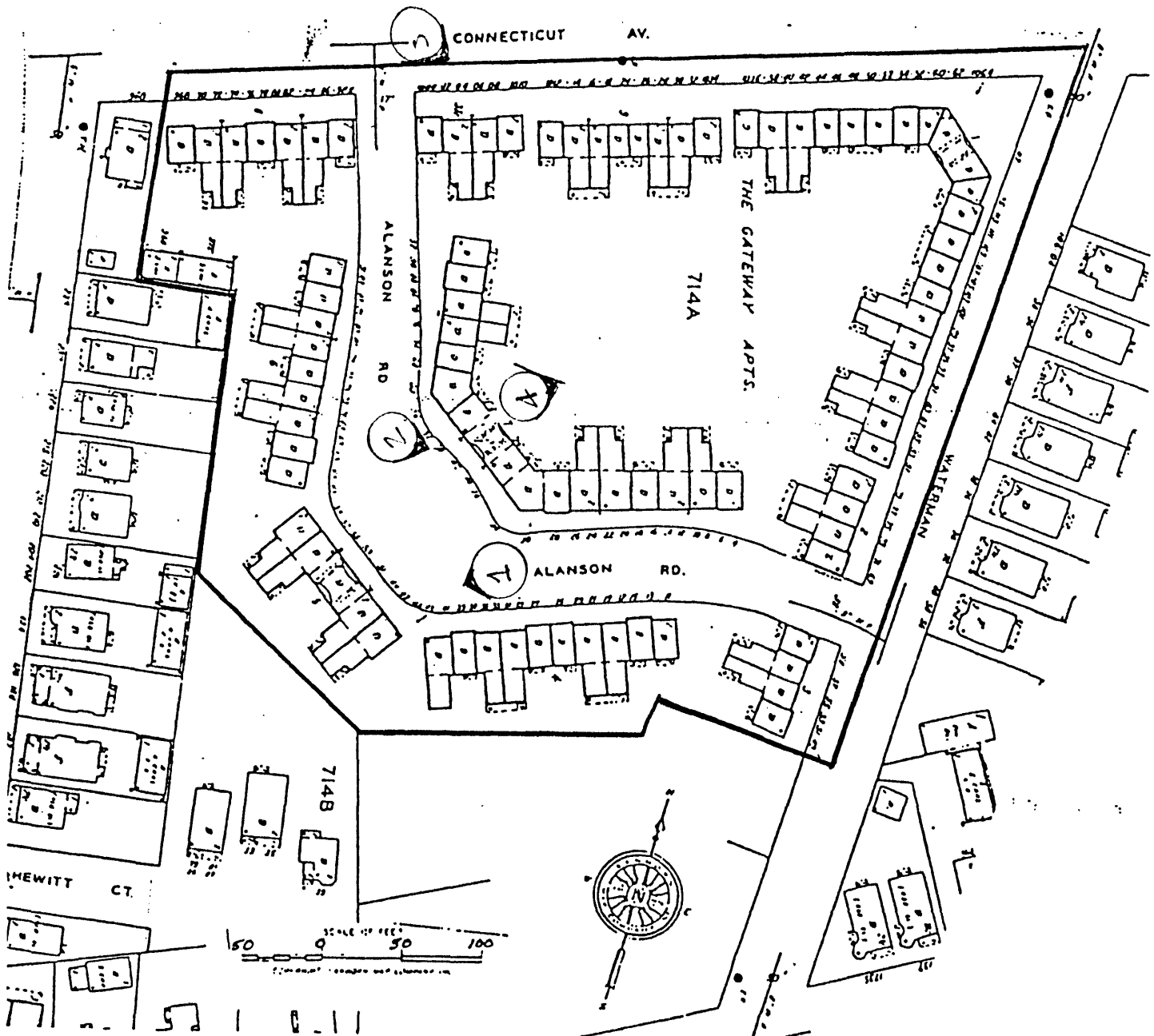
United States Department of the Interior
National Park Service

Multiple Property Form
Wartime Emergency Housing In Bridgeport
1916 - 1920

National Register of Historic Places Continuation Sheet

Map & Photo
Section number Key Page 1

Figure # 1
Gateway Village
Photo Key and Boundary Map



**United States Department of the Interior
National Park Service**

Multiple Property Form
Wartime Emergency Housing In Bridgeport
1916 - 1920

National Register of Historic Places Continuation Sheet

Section number Photos Page 1

Gateway Village Photographs

BP/1/14/89

MULTIPLE PROPERTY FORM WARTIME EMERGENCY HOUSING IN BRIDGEPORT, 1916 - 1920

Bridgeport, Connecticut

Gateway Village

43 - 39 Alanson Road, looking west

Photograph # 1

BP/1/15/89

MULTIPLE PROPERTY FORM WARTIME EMERGENCY HOUSING IN BRIDGEPORT, 1916 - 1920

Bridgeport, Connecticut

Gateway Village

52 - 34 Alanson Road, looking east

Photograph # 2

BP/1/17/89

MULTIPLE PROPERTY FORM WARTIME EMERGENCY HOUSING IN BRIDGEPORT, 1916 - 1920

Bridgeport, Connecticut

Gateway Village

Connecticut Avenue, looking east from #1000

Photograph # 3

BP/1/16/89

MULTIPLE PROPERTY FORM WARTIME EMERGENCY HOUSING IN BRIDGEPORT, 1916 - 1920

Bridgeport, Connecticut

Gateway Village

Courtyard between Allanson Road, Connecticut Avenue, and Waterman Street,
looking east

Photograph # 4

**United States Department of the Interior
National Park Service**

Multiple Property Form
Wartime Emergency Housing in Bridgeport,
1916 - 1920

National Register of Historic Places Continuation Sheet

Section number 10 Page 1

Boundary Justification

The Gateway Village Historic District is located within a clearly defined neighborhood of Bridgeport outlined by the boundaries of the original land purchased by the the Bridgeport Housing Corporation in 1916. Distinctive architectural features, including overall building design, slate roofs and brick construction, identify the buildings associated with the Bridgeport Housing Corporation development. Landscape features, such as sidewalks, interior courtyards, and flowering trees, add cohesiveness to the district. The edges of the district are bordered by nineteenth and twentieth century residential and commercial construction.