

NO
PARKING
ANY
TIME
←→

STONEMEN'S ROW HISTORIC DISTRICT (BUILDING 1)

2753/2755 Umatilla Street

Denver (City and County), Colorado

Photo by: Dave Spencer

May, 1983

Negative located at the Colorado Preservation
Office

View of Umatilla St. and W. 28th Ave. facades
taken from northeast of the structure.

Photo # 1 (of 11)



STONEMEN'S ROW HISTORIC DISTRICT (BUILDING ^2)

2112/2114 West 28th Avenue

Denver (City and County), Colorado

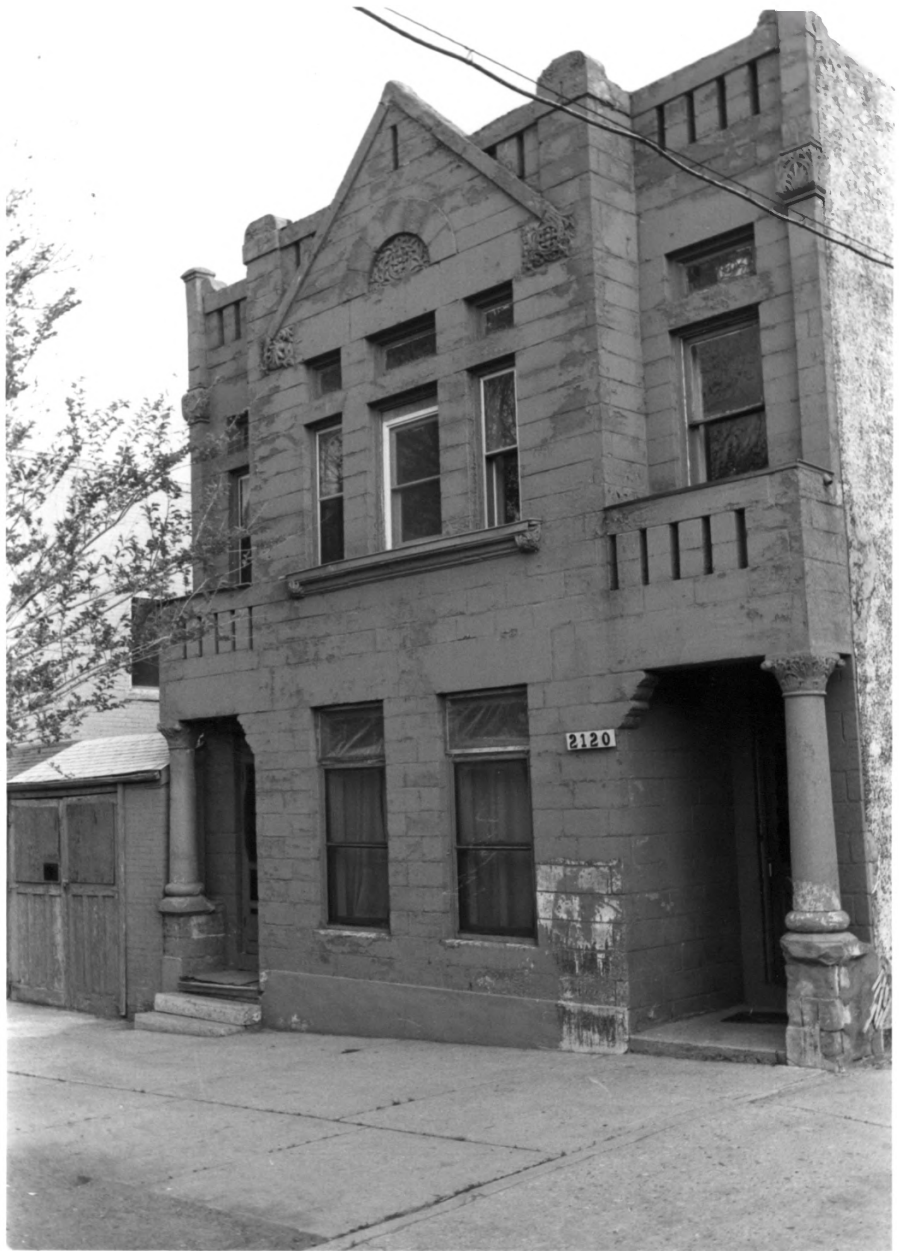
Photo by: Dave Spencer

May, 1983

Negative at Colorado Preservation Office

View of front facade taken from directly
north of the building.

Photo # 2(of 11)



2120

STONEMEN'S ROW HISTORIC DISTRICT (BUILDING 3)

2118/2120 West 28th Avenue

Denver (City and County), Colorado

Photo by: Dave Spencer

May, 1983

Negative at Colorado Preservation Office

View of front facade from northwest of building,
also showing non-contributing garage.

Photo # 3 (of 11)



STONEMEN'S ROW HISTORIC DISTRICT (BUILDING 4)

2122 West 28th Avenue

Denver (City and County), Colorado

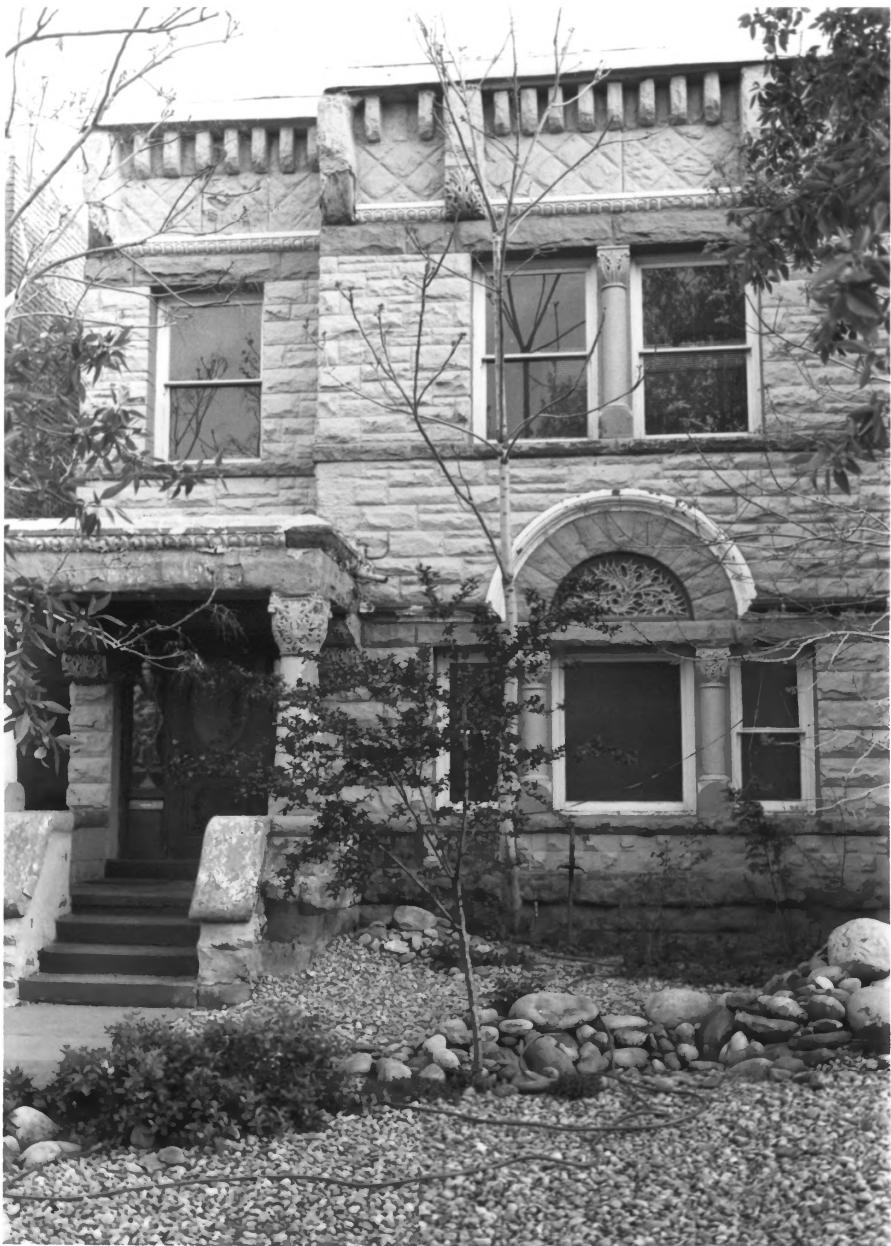
Photo by: Dave Spencer

May, 1983

Negative at the Colorado Preservation Office

View of front facade from the north.

Photo # 4(of 11)



STONEMEN'S ROW HISTORIC DISTRICT (BUILDING 5)

2128 West 28th Avenue

Denver(City and County), Colorado

Photo by: Dave Spencer

May, 1983

Negative at the Colorado Preservation Office

Front facade taken from the north.

Photo # 5(of 11)



STONEMEN'S ROW HISTORIC DISTRICT (BUILDING 6)

2132/2124 West 28th Avenue

Denver (City and County), Colorado

Photo by: Dave Spencer

May, 1983

Negative at the Colorado Preservation Office

View of front facade taken from the north.

Photo # 6(of 11)



STONEMEN'S ROW HISTORIC DISTRICT (BUILDING 7)

2136/2138 West 28th Avenue

Denver (City and County), Colorado

Photo by: Dave Spencer

May, 1983

Negative at the Colorado Preservation Office.

View of front facade taken from north of the
building.

Photo # 7(of 11)



STONEMEN'S ROW HISTORIC DISTRICT (BUILDING 8)

2140/2142 West 28th Avenue

Denver (City and County), Colorado

Photo by: Dave Spencer

May, 1983

Negative at the Colorado Preservation Office

View of W. 28th Ave. and Vallejo St. facades

from northwest of the building.

Photo # 8(of 11)



STONEMEN'S ROW HISTORIC DISTRICT

South side of 2100 block of West 28th Avenue

Denver (City and County), Colorado

Photo by: Dave Spencer

May, 1983

Negative at the Colorado Preservation Office

View of District looking east and slightly south

taken from just northwest of Building 8.

Photo # 9(of 11)



STONEMEN'S ROW HISTORIC DISTRICT

South side of 2100 block of West 28th Avenue

Denver (City and County), Colorado

Photo by: Dave Spencer

May, 1983

Negative at the Colorado Preservation Office.

View of District looking southeast taken from

the front of Building 6.

Photo # 10(of 11)



STONEMEN'S ROW HISTORIC DISTRICT

South side of 2100 block of West 28th Avenue
Denver (City and County), Colorado

Photo by: Dave Spencer
August, 1983

Negative at the Colorado Preservation Office.
View of District looking southwest, taken
from corner of W. 28th Ave. and Umatilla St.
Photo # 11(of 11)