



Civic Center district--Municipal
Court & Public Safety Bldg.
E. 1st & Court Ave.

Des Moines, Polk Co., IA

#1 B. Long

1987

to East



MUNICIPAL COURT

Civic Center district
Municipal Court & Public Safety Bldg.
E. 1st and Court Ave
Des Moines, Polk Co, Ia
#2
1987 B. Long
to SE



Civic Center district

U S Court House

E 1st and Walnut

Des Moines, Polk Co, Ia

#3

1987

main facade, to SE

BJB Long



Civic Center district
U S Court House
E 1st and Walnut
Des Moines, Polk Co, Ia

#4

1987

BJB Long

exterior, to E



Civic Center district
Municipal Building
East 1st and Locust
Des Moines, Polk Co, IA
#5
1987
BJB Long
exterior, to west



Civic Center district
Armory

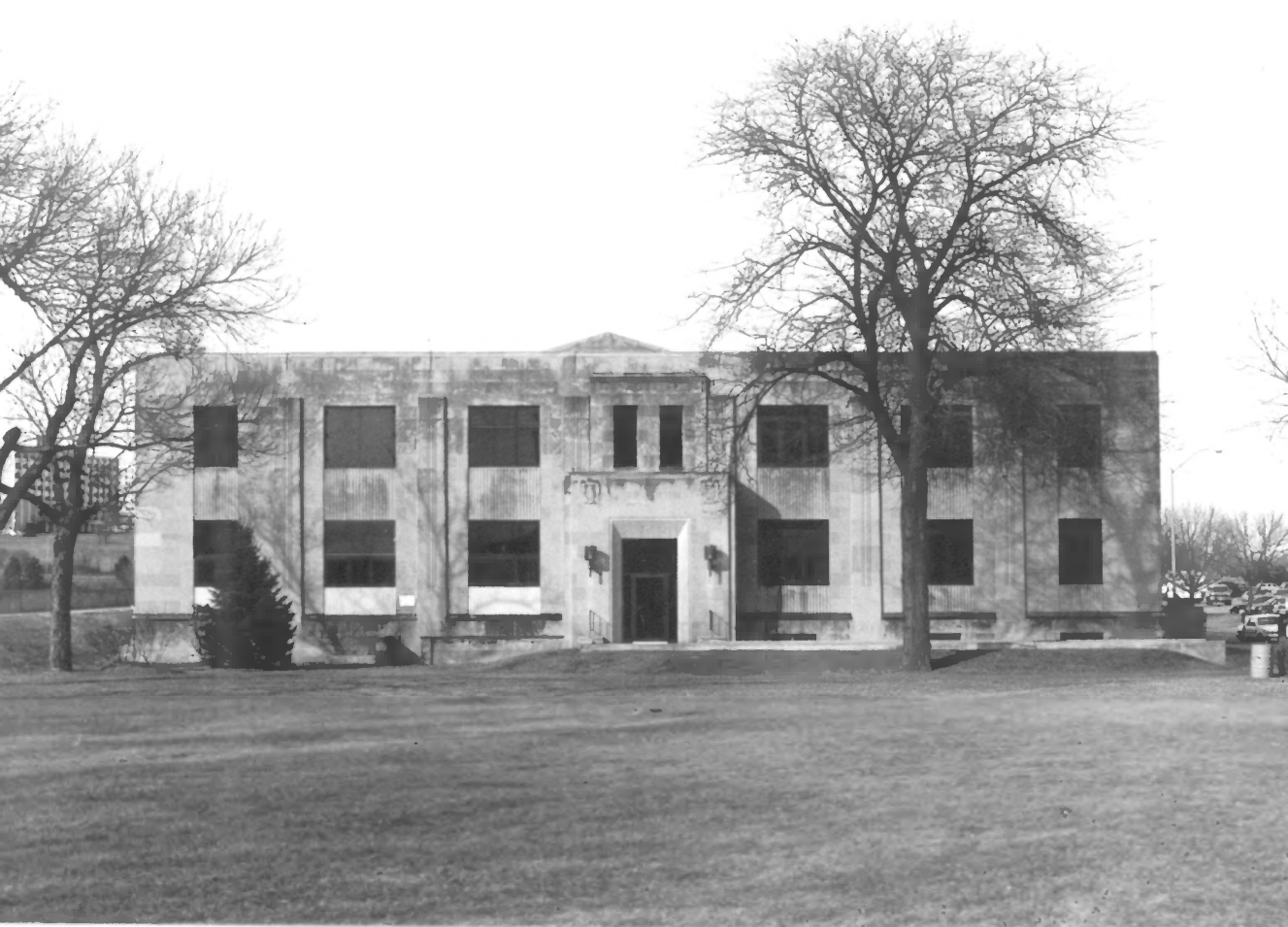
E 1st and Des Moines
Des Moines, Polk Co, IA

#6

1987

BJB Long

exterior, to W



Civic Center district
Armory
E 1st and Des Moines
Des Moines, Polk Co, IA
#7
1987
exterior, to N BJB Long



Civic Center district
Armory
E 1st and Des Moines
Des Moines, Polk Co, IA
1987 BJB Long
S entrance of E facade

#8



Civic Center district
Public Library of Des Moines
100 Locust
Des Moines, Polk Co, Ia

#9
1987
to W

BJB Long



1999 PUBLIC
LIBRARY

Civic Center district
Public Library of Des Moines
100 Locust
Des Moines, Polk Co, Ia
#10
1987 BJB Long
exterior, to SW



Civic Center district
Municipal Building
E 1st and Locust
Des Moines, Polk Co, Ia

#11

1987

BJB Long

exterior, to NE



Civic Center district
Public Library of Des Moines
100 Locust
Des Moines, Polk Co, Ia
#12
1987
exterior, to NE

BJB Long



Civic Center district

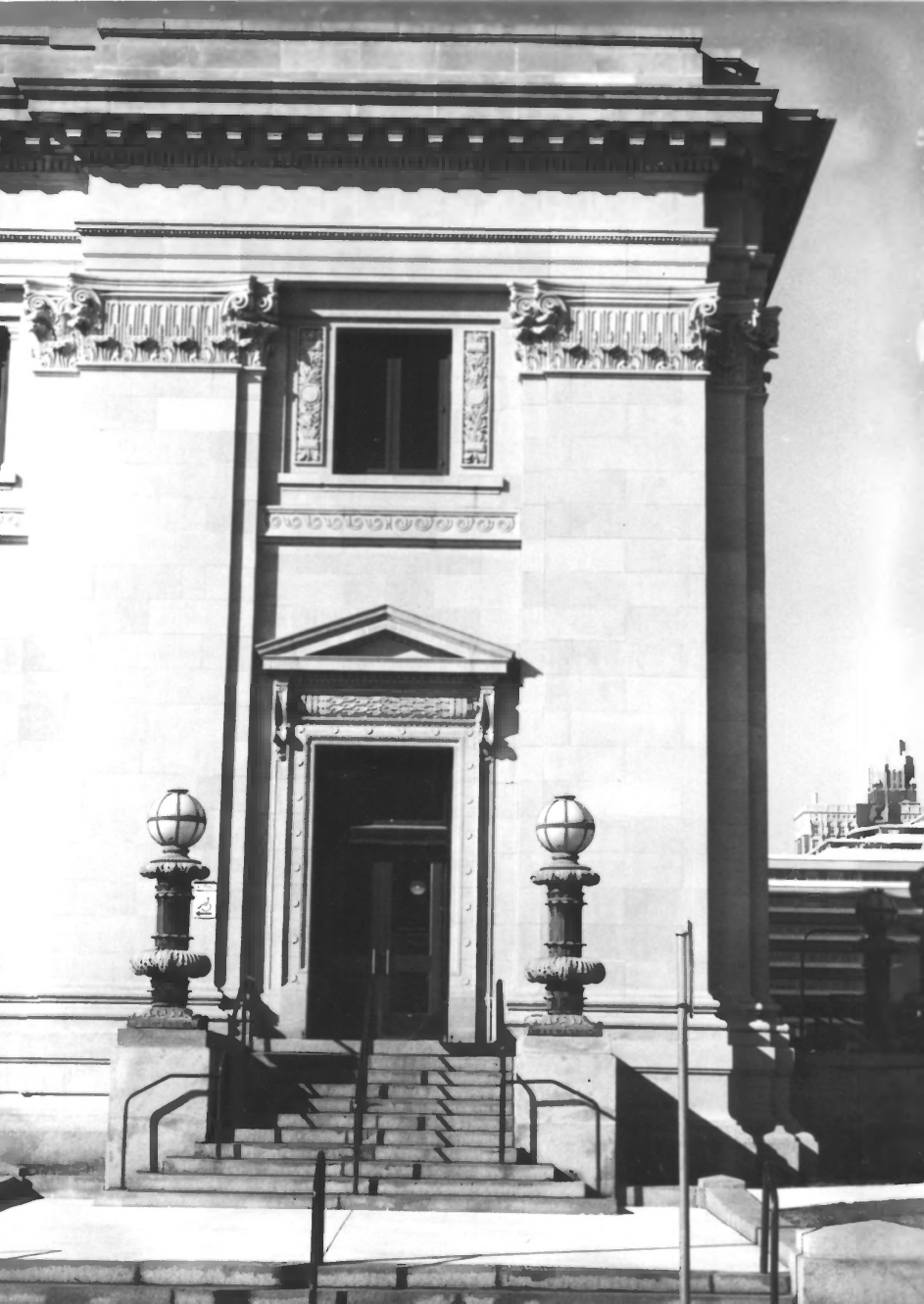
U S Post Office

1st and Walnut

Des Moines, Polk Co, Ia

#13 BJB Long

exterior, to SW



Civic Center district
U S Post Office
1st and Walnut
Des Moines, Polk Co, Ia

#14

1987

BJB Long

detail, east facade, north corner
entrance



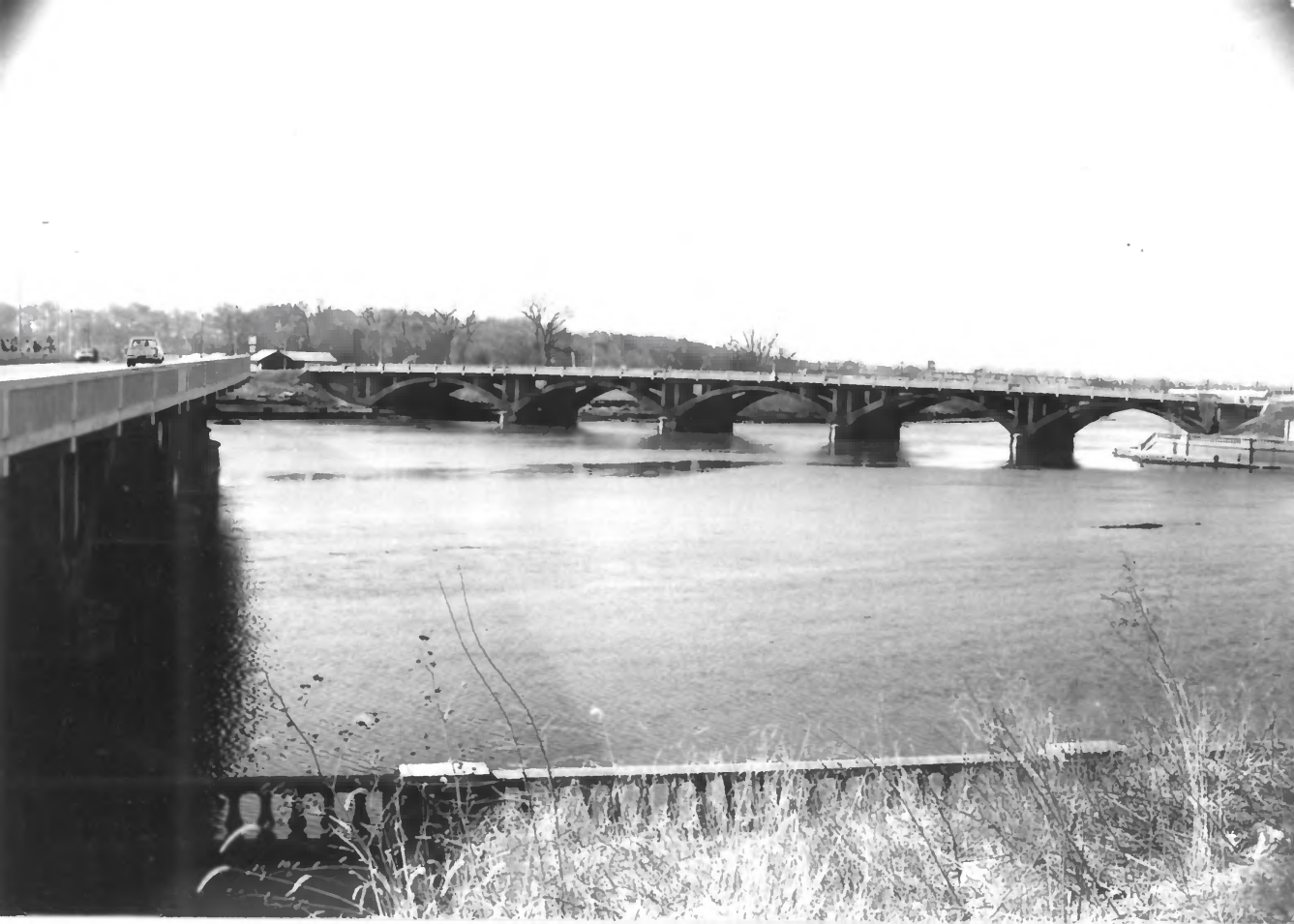
Civic Center district
at the Des Moines River
Des Moines, Polk County, Ia

#15

1987

BJB Long

view of the district showing river
walls and bridges, looking N



Civic Center district
River Side Drive Bridge at the Rac-
coon River

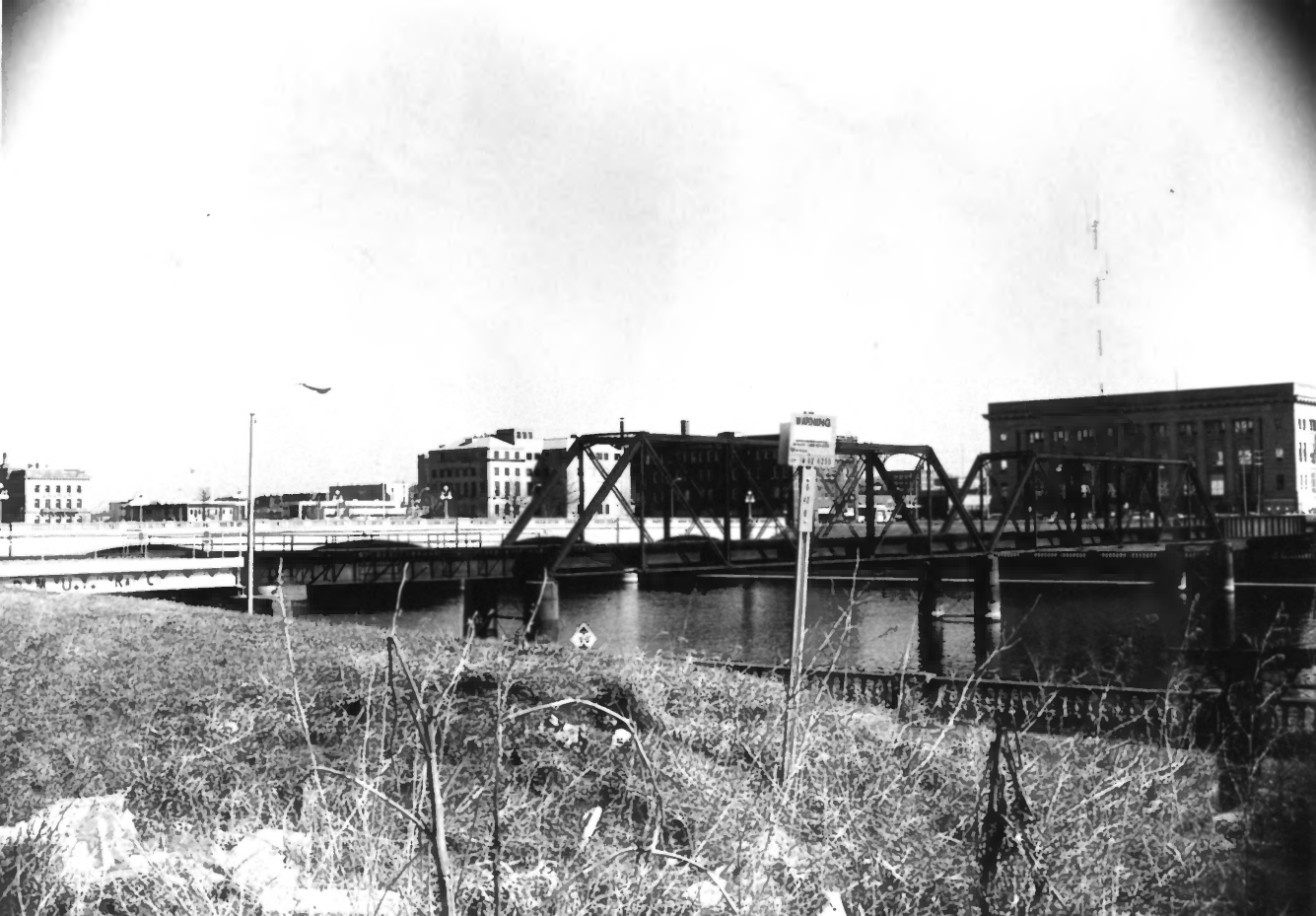
River Side Drive Bridge

#16

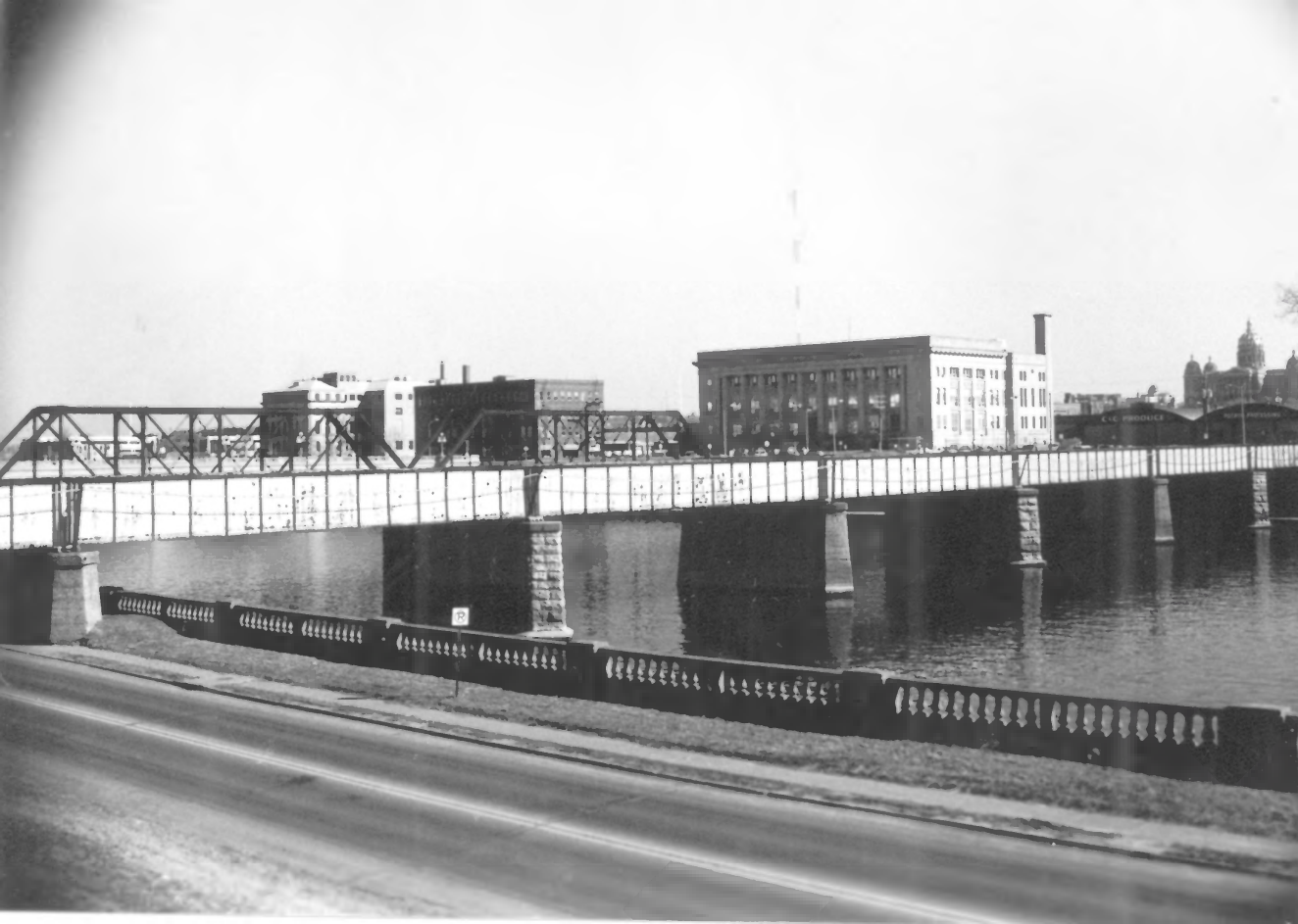
1987 BJB Long

looking westward

Des Moines, Polk Co, Ia



Civic Center district
Des Moines Union Railway bridge at
Des Moines River
Des Moines Union Railway Bridge
Des Moines, Polk Co, Ia
BJB Long
#17
looking NE



Civic Center district
CRI&P bridge at Des Moines River
Des Moines, Polk Co, Ia
Chicago, Rock Island & Pacific Rail-
road Bridge

#18

1987

BJB Long

looking NE



Civic Center district
Court Avenue Bridge
Court Avenue at Des Moines River
Des Moines, Polk Co, Ia
#19
1987
looking NW

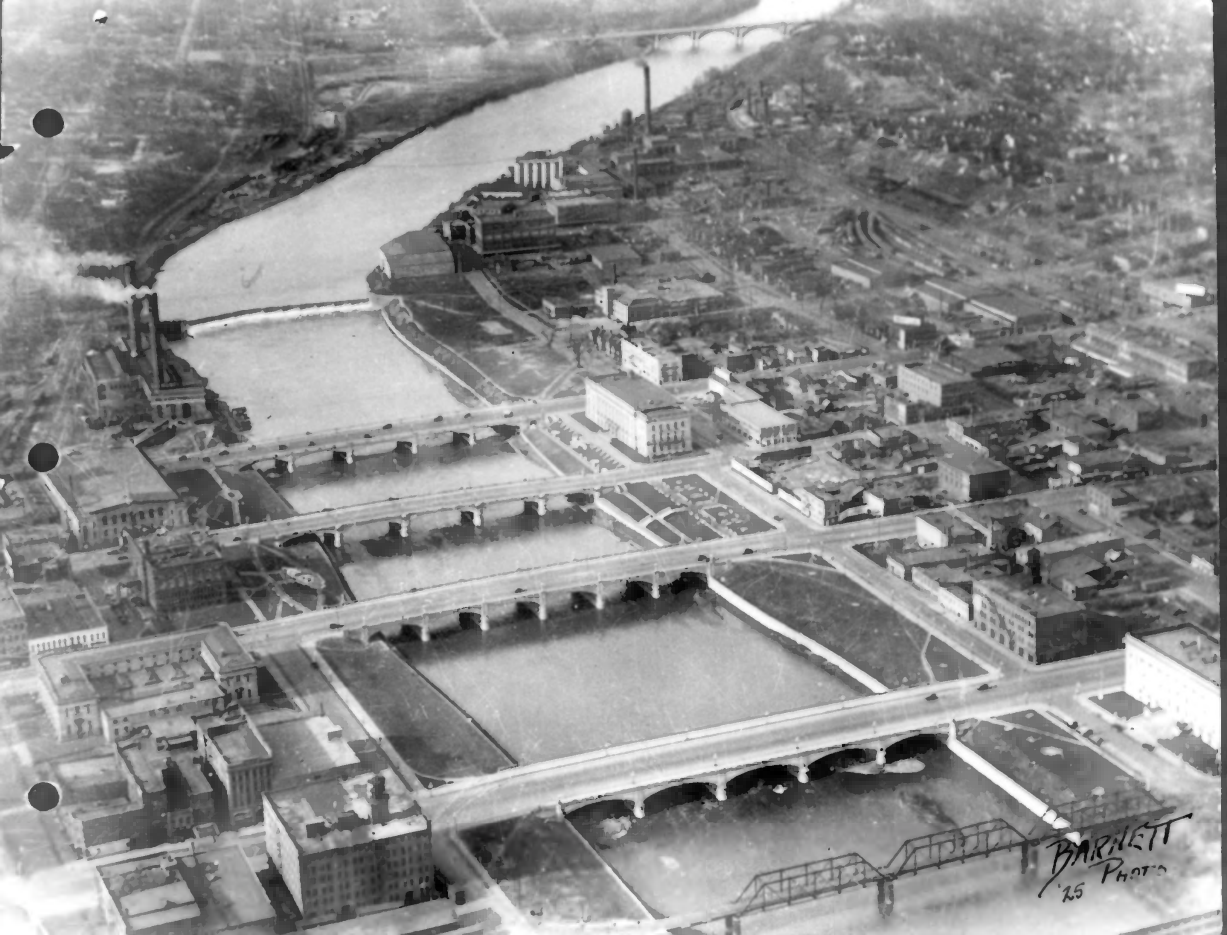
BJB Long



Civic Center district
Walnut St Bridge at Des Moines River
Walnut Street Bridge
Des Moines, Polk Co, Ia
#20
1987
BJB Long
looking NW



Civic Center district
Court Avenue
Des Moines, Polk Co, Ia
#21
1987 BJB Long
streetscene, directly W of Court
Avenue Bridge



BARNETT
'25 PHOTO

Des Moines Civic Center
Polk Co, IA

1925

source: DM Plan & Zoning

22



DAVIDSON'S
MOTOR CARS
TRUCKS
BUSSES
TRAILERS

LIBERTY
MOTOR CARS
TRUCKS
BUSSES
TRAILERS

LIBERTY
MOTOR CARS
TRUCKS
BUSSES
TRAILERS

East bank, Des Moines
river front, looking E
c. 1910

source: DM Plan & Zoning
Polk Co, IA

23



REAL DISTRS.

EYES FATIGUE
SOLD WHERE 5¢

SARDINES
CREAM OF LAKE
FOOD
MONEY REFUND

Des Moines Public Library,
Polk Co, IA
c. 1903
source: DM Plan & Zoning

24



Municipal Bldg, Des
Moines, Polk Co, IA
after 1937
source: City Engineer.

25

MUNICIPAL COURT AND PUBLIC SAFETY

W. H. H. H.

Municipal Court & Public
Safety Bldg, Des Moines
Polk Co, IA
c. 1920

source: DM Plan & Zoning

24



Courtroom, Municipal Court
& Public Safety Bldg, Des
Moines, Polk Co, IA
historic photo, before
renovation

27



Courtroom, Municipal Court
& Public Safety Bldg, Des
Moines, Polk Co., IA
historic photo, before
renovation

28



Court Avenue Bridge
Des Moines, Polk Co, IA
c. 1937
source: DM Plan & Zoning

29



Bridges, River Walls, Des
Moines River, Polk Co, IA
c. 1937

looking N

source: City Engineer

30



River Wall, W bank, at
Locust and Grand, looking
NW, showing ruptured storm
sewer, bet. 1937 and 1949
source: City Engineer



Scott Avenue Bridge
Des Moines, Polk Co, IA
c. 1937
source: City Engineer

32



Civic Center district
U S Post Office
1st and Walnut
Des Moines, Polk Co, Ia
#33
1987
exterior, to NW

BJB Long