

**United States Department of the Interior
National Park Service**

**National Register of Historic Places
Continuation Sheet**

Section number _____ Page _____

SUPPLEMENTARY LISTING RECORD

NRIS Reference Number: 95000941

Date Listed: 8/14/95

**Shadowlawn Historic District
Property Name**

**Shelby
County**

**TENNESSEE
State**

Multiple Name

This property is listed in the National Register of Historic Places in accordance with the attached nomination documentation subject to the following exceptions, exclusions, or amendments, notwithstanding the National Park Service certification included in the nomination documentation.

Mal M. Way

Signature of the Keeper

8/14/95

Date of Action

=====
Amended Items in Nomination:

Section No. 5

This nomination is amended to show that the ownership category of the property is private.

This change was confirmed with the Tennessee SHPO by phone (8/14/95).

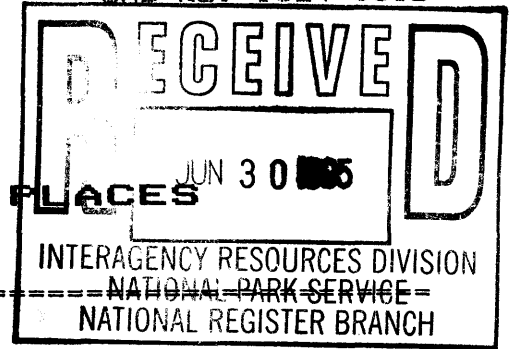
DISTRIBUTION:

- National Register property file
- Nominating Authority (without nomination attachment)

441

United States Department of the Interior
National Park Service

**NATIONAL REGISTER OF HISTORIC PLACES
REGISTRATION FORM**



1. Name of Property

historic name: SHADOWLAWN HISTORIC DISTRICT

other name/site number: Chandler's Shadowlawn Subdivision

2. Location

street & number: Roughly bounded by Shadowlawn, Wellington, South Parkway
and Essex Streets

not for publication: N/A

city/town: Memphis

vicinity: N/A

state: Tennessee

code: TN

county: Shelby

code: 157

zip code: 38106

3. State/Federal Agency Certification

As the designated authority under the National Historic Preservation Act of 1986, as amended, I hereby certify that this nomination request for determination of eligibility meets the documentation standards for registering properties in the National Register of Historic Places and meets the procedural and professional requirements set forth in 36 CFR Part 60. In my opinion, the property meets does not meet the National Register Criteria. I recommend that this property be considered significant nationally statewide locally. (___ See continuation sheet for additional comments.)

Robert L. Harper
Signature of certifying official
Deputy SHPO, Tennessee Historical Commission

6/28/95
Date

State or Federal agency and bureau

In my opinion, the property ___ meets ___ does not meet the National Register criteria. (___ See continuation sheet for additional comments.)

Signature of commenting or other official

Date

State or Federal agency and bureau

4. National Park Service Certification

I. hereby certify that this property is:

- entered in the National Register
See continuation sheet.
- determined eligible for the
National Register
See continuation sheet.
- determined not eligible for the
National Register
- removed from the National Register
- other (explain):

Ma J M. W. G. 8/14/95

for Signature of Keeper Date of Action

5. Classification

Ownership of Property: Multiple

Category of Property: District

Number of Resources within Property:

Contributing	Noncontributing	
178	41	buildings
1	-0-	sites
-0-	-0-	structures
-0-	-0-	objects
179	41	Total

Number of contributing resources previously listed in the National Register: N/A

Name of related multiple property listing: N/A

8. Statement of Significance

APPLICABLE NATIONAL REGISTER CRITERIA

AREAS OF SIGNIFICANCE

- X A Property is associated with events that have made a significant contribution to the broad patterns of our history.
- B Property is associated with the lives of persons significant in our past.
- X C Property embodies the distinctive characteristics of a type, period, or method of construction or represents the work of a master, or possesses high artistic values, or represents a significant and distinguishable entity whose components lack individual distinction.
- D Property has yielded, or is likely to yield, information important in prehistory or history.

ARCHITECTURE
COMMUNITY PLANNING AND
DEVELOPMENT

PERIOD OF SIGNIFICANCE

1924 to ca. 1945

CRITERIA CONSIDERATIONS

SIGNIFICANT DATES

Property is: N/A

1924

- A owned by a religious institution or used for religious purposes
- B removed from its original location.
- C a birthplace or grave
- D a cemetery
- E a reconstructed building, object, or structure
- F a commemorative property
- G less than 50 years of age or achieved significance within the past 50 years.

SIGNIFICANT PERSON

N/A

CULTURAL AFFILIATION

N/A

ARCHITECT/BUILDER

Chandler, William Cullen,
(developer/builder);
various others, unknown.

=====
9. MAJOR BIBLIOGRAPHICAL REFERENCES
=====

X See continuation sheet.

PREVIOUS DOCUMENTATION ON FILE (NPS): N/A

- _ preliminary determination of individual listing (36 CFR 67) has been requested.
_ previously listed in the National Register
_ previously determined eligible by the National Register
_ designated a National Historic Landmark
_ recorded by Historic American Buildings Survey # _____
_ recorded by Historic American Engineering Record # _____

PRIMARY LOCATION OF ADDITIONAL DATA:

- x State historic preservation office x Local government
_ Other state agency _ University
_ Federal agency _ Other

Specify Repository: Tennessee Historical Commission
Memphis Div. Housing and Community Development

10. Geographical Data
=====

Acreeage of Property: approximately 30.7 acres

UTM References: Zone Easting Northing Zone Easting Northing
A 16 769310 3888740 B 16 769310 3888070
C 16 769000 3888070 D 16 769000 3888740

___ See continuation sheet. SW Memphis Quad 404SE

Verbal Boundary Description: See continuation sheet.

Boundary Justification: See continuation sheet.

11. Form Prepared By
=====

Name/Title: John Linn Hopkins, Principal

Organization: Hopkins & Associates Date: December, 1994

Street & Number: 974 Philadelphia Street Telephone: (901) 278-5186

City or Town: Memphis State: TN Zip: 38104

PROPERTY OWNER
=====

Name Multiple

Street & Number

Telephone

City/Town

State

Zip

United States Department of the Interior
National Park Service

**NATIONAL REGISTER OF HISTORIC PLACES
CONTINUATION SHEET**

Section number 7 Page # 1 Shadowlawn Historic District
 Memphis, Shelby County, Tennessee

=====

NARRATIVE DESCRIPTION

The Shadowlawn Historic District is a small planned subdivision containing one hundred and thirty-four principal dwellings, located in the southwestern portion of the City of Memphis. The district includes the historic portion of the Chandler's Shadowlawn Subdivision which was developed between 1924 and the outbreak of World War Two. The portion of the subdivision proposed for nomination includes properties facing South Wellington Street from South Parkway south nearly to East Person Street; properties facing Shadowlawn Boulevard from South Parkway south to Essex Street, and three partial blocks of structures facing South Parkway that flank Shadowlawn and Wellington on the east and west.

The district is situated upon gently rolling terrain that drops away to the west and south from the district. The district is generally characterized as a simple grid of streets and a regular pattern of lot divisions, with the exception of a portion of South Wellington at its northern end. The northern portion of South Wellington was given a shallow S-curve to align its intersection with South Parkway with a previously-existing portion of South Wellington that runs north from South Parkway. The predominant lot size in the district measures 145 feet in depth and a frontage of fifty to sixty-five feet in width.

With but one exception, all of the buildings in the district remain in residential use. Like many neighborhoods in Memphis built during the 1920s, house types in the district are mostly bungalows, with fewer English cottages and Capes scattered throughout the district. Architectural styles found in the district include the Craftsman, Colonial Revival, Tudor Revival, and Minimal Traditional styles.

There are recognizable elements of "pattern architecture" or "plan-book architecture" identifiable in the district, particularly among some of the number of bungalows present. Similarities can be found in the massing and organization of some of these structures which suggest common floor plans, though each was given different design elements for an individual expressions. Unfortunately, constraints of time and budget did not allow for further research on this aspect of the district's character.

An inventory of the properties contained within the Shadowlawn Historic District follows. There are 178 contributing properties in the district, and 41 which do not contribute to its historic character. Most of the non-contributing properties are garages. The properties inventoried which contribute to the historical character of design, housing types, workmanship, and materials found in the district are identified as (C). Buildings which were constructed in the time since the close of the historic period, or buildings which have been so altered as to have lost their integrity of design, house type, workmanship or materials, do not contribute to the historical character of the district and are identified (NC).

(8-85)

United States Department of the Interior
National Park Service

NATIONAL REGISTER OF HISTORIC PLACES
CONTINUATION SHEET

Section number 7 Page # 2 Shadowlawn Historic District
Memphis, Shelby County, TN

=====

The historical characteristics of the setting of the district, which include the character of its building setbacks, street trees, sidewalks, land terraces, and other features, including the two pairs of its subdivision gates, all contribute to the historical qualities of the district as a planned subdivision and our counted together as one contributing site.

Note should be paid to some of the nomenclature used in the inventory which follows. To begin, each structure is described in terms of its house form or plan type, as overlaid with a stylistic influence (such as a "... bungalow with Craftsman influence...", or a "...Cape with Colonial Revival influence.."). This approach has been taken to better describe the architectural characteristics of the district, a part of which is defined by its collection of traditional twentieth-century house forms.

Also present in the district are variations on common plans, massing and features of these house types, which are described as "modified bungalows", "modified Capes", etc. By example, the traditional bungalow has characteristics of massing which place the porch as a prominent feature of the type, but also has other characteristics, including plan, use of materials and etc. which define its type. A "modified bungalow", then, would describe a house with a minor front porch, but which still possesses the other critical components which defines the bungalow as a type. Capes normally do not possess a prominent front porch or dormers; the term "modified Cape" would be used to describe one or more of these alternative features. English cottages do not normally have front porches at all, in deference to a side-facing porch. A "modified English cottage" would be used to describe the English cottage which did have a prominent front porch.

As a final note, the inventory employs commonly-used abbreviations to save space in describing window configurations. The abbreviation "6/6 DHSL" is employed instead of "six-over-six, double-hung sash light"; the shorter abbreviation of "DH" is used exclusively in describing non-historic metal-frame replacement windows, which give the impression of being double-hung, but may only have one sash actually operable.

SOUTH PARKWAY

001 401 South Parkway (C)
One-and-one-half story, three-bay, brick-veneered bungalow with Craftsman influence, built ca. 1930. Gable-front roof with exposed rafter tails and rear airplane added ca. 1950. covered with asphalt shingles. Full-width, gable and hip-roofed porch supported brick piers. Windows are 1/1 DHSL, some in pairs. Entrance contains a multi-light door.

United States Department of the Interior
National Park Service

NATIONAL REGISTER OF HISTORIC PLACES
CONTINUATION SHEET

Section number 7 Page # 3 Shadowlawn Historic District
Memphis, Shelby County, TN
=====

401 South Parkway, continued:

Garage, ca. 1940. One-story, one-bay, frame, gable roof, weatherboard siding. (C)

002 407 South Parkway (C)

One-story, three-bay, brick-veneered bungalow with Craftsman influence, built in ca. 1930. Gable-front roof with exposed rafter tails, covered with asphalt shingles. Full-width, gable and hip-roofed porch supported by brick piers. Windows are 1/1 DHSL, some in pairs. Entrance contains a fan light and four-panel replacement door.

Garage, ca. 1930. One-story, one-bay, frame, gable roof, weatherboard siding. (C)

003 411 South Parkway (C)

One-and-one-half story, four-bay, brick-veneered bungalow with Craftsman influence, built ca. 1930. Gable-front roof with exposed rafter tails, covered with asphalt shingles. Full-width, gable and hip-roofed porch supported by battered ashlar piers. Windows are Craftsman multi-light/1 DHSL, some in pairs. Entrance contains a multi-light door.

Garage, ca. 1960. One-story, two-bay, frame, gable roof, vinyl siding. (NC)

004 417 South Parkway (C)

One-story, three-bay, brick-veneered bungalow with Craftsman influence, built ca. 1926-27. Gable-front roof, covered with asphalt shingles; gable end and eaves covered with vinyl siding. Full-width, gable and hip-roofed porch supported by battered ashlar piers. Windows are Craftsman multi-light/1 DHSL, in pairs. Entrance contains a Craftsman multi-light door.

Garage, ca. 1960. One-story, two-bay, concrete block, gable roof. (NC)

005 421 South Parkway (C)

One-story, four-bay, brick-veneered bungalow with Craftsman influence, built ca. 1926-27. Gable-front roof covered with asphalt shingles; gable end and eaves covered with vinyl siding. Full-width, gable-front porch supported by battered ashlar piers. Windows are Craftsman 3/3 DHSL, some in pairs. Entrance contains a multi-light door.

United States Department of the Interior
National Park Service

NATIONAL REGISTER OF HISTORIC PLACES
CONTINUATION SHEET

Shadowlawn Historic District
Memphis, Shelby County, TN

Section number 7 Page # 4

- 006 427 South Parkway (C)
One-story, three-bay, brick-veneered duplex English cottage with Tudor Revival influence, built ca. 1926-27. Complex gable roof with box cornice, covered with asphalt shingles. Two, one-bay, gable-front porches supported by brick piers. Windows are 1/1 DHSLS, some, in pairs. Entrance contains a solid replacement door.
- 007 439 South Parkway (C)
One-and-one-half story, four-bay, brick and fieldstone-veneered English cottage with Tudor Revival influence, built ca. 1926-27. Complex gable roof with box cornice, covered with asphalt shingles. Partial-width, gable-front side porch supported by box columns, enclosed ca. 1970. Windows are diamond pattern/1 DHSLS, Entrance set in projecting vestibule with asymmetrical gable-front roof; entrance covered by gable-front hood supported by knee brace brackets, and contains a Tudor-arched diamond pattern-light door.

Garage, ca. 1960. One-story, two-bay, concrete block, gable roof.
(NC)
- 008 445 South Parkway (C)
One-story, three-bay, brick-veneered transitional bungalow-English cottage with Tudor and Craftsman influences, built ca. 1925. Complex gable roof with box cornice, covered with asphalt shingles. Partial-width, undercut side porch supported by brick piers spanned by a segmental arch, enclosed ca. 1970. Windows are 6/6 DHSLS. Entrance covered by gable-front hood supported by knee brace brackets, and contains a nine-light, semi-circular arched door.
- 009 451 South Parkway (C)
One-and-one-half story, three-bay, brick-veneered bungalow with Craftsman influence, built ca. 1925. Complex gable roof with exposed rafter tails, covered with asphalt shingles. Full-width, gable and hip-roofed porch and porte cochere supported by battered ashlar piers. Windows are Craftsman 3/1 DHSLS. Entrance contains a three-light, one-panel Craftsman door.

Garage, ca. 1925. One-story, two-bay, frame, gable roof, weatherboard siding. (C)
- 010 455 South Parkway (C)
One-and-one-half story, five-bay, ashlar-veneered English cottage with Tudor Revival influence, built ca. 1930. Complex gable roof with box cornice, covered with asphalt shingles. Partial-width, gable-front side porch supported by battered ashlar piers. Windows are 6/1 DHSLS. Entrance set in projecting vestibule with asymmetrical gable-front roof, and contains a sixteen-light, semi-circular arched door.

United States Department of the Interior
National Park Service

NATIONAL REGISTER OF HISTORIC PLACES
CONTINUATION SHEET

Section number 7 Page # 5 Shadowlawn Historic District
Memphis, Shelby County, TN
=====

455 South Parkway, continued:

Garage, ca. 1930. One-story, one-bay, frame, hip roof, weatherboard siding. (C)

011 479 South Parkway (NC)

Two-story, three-bay, brick-veneered four-square with Craftsman influence, built ca. 1926-27 and modified in ca. 1955 with additions and Modernist Traditional influence. Hip roof with deep projecting eaves, covered with asphalt shingles. Two-story, full-width, undercut porches enclosed with banks of metal-frame casements and brick infill in ca. 1955. Original windows are 3/1 DHSL. Entrance contains a six-panel replacement door.

Garage, ca. 1960. One-story, three-bay, frame, shed roof, exterior plywood siding. (NC)

012 485 South Parkway (C)

One-story, four-bay, brick-veneered bungalow with Craftsman influence, built ca. 1925. Gable-front roof covered with asphalt shingles; eaves covered with vinyl siding ca. 1975. Full-width, gable-front porch supported by battered ashlar piers; a metal-frame, shed-roofed carport added to side in ca. 1980. Windows are Craftsman 4/1 DHSL. Entrance contains a four-light Craftsman door.

Garage, ca. 1955. One-story, one-bay, frame, gable roof, exterior plywood siding. (NC)

013 491 South Parkway (C)

One-and-one-half story, three-bay, brick-veneered bungalow with Craftsman influence, built ca. 1926-27. Gable-front roof with rear, hip-roofed airplane and exposed rafter tails, covered with asphalt shingles. Full-width, gable and hip-roofed porch supported by battered ashlar piers. Windows are Craftsman multi-light/1 DHSL, some in pairs. Entrance contains a Craftsman multi-light door.

014 497 South Parkway (C)

One-story, four-bay, brick-veneered bungalow with Craftsman influence, built ca. 1926-27. Complex hip and gable roof with jerkinhead and exposed rafter tails, covered with asphalt shingles. Partial-width, undercut side porch supported by brick piers, enclosed in ca. 1970. Windows are 2/1 metal-frame replacement sashes. Entrance contains a six-panel door.

Garage, ca. 1930. One-story, two-bay, stucco-veneer, hip roof. (C)

United States Department of the Interior
National Park Service

NATIONAL REGISTER OF HISTORIC PLACES
CONTINUATION SHEET

Section number 7 Page # 6 Shadowlawn Historic District
Memphis, Shelby County, TN
=====

- 015 505 South Parkway (C)
One-and-one-half story, four-bay, brick-veneered bungalow with Craftsman influence, built ca. 1926-27. Complex gable roof with exposed rafter tails, covered with asphalt shingles. Partial-width, hip-roofed porch and porte cochere supported by battered ashlar piers. Windows are 1/1 DHSLS. Entrance contains a single-light door.

Garage, ca. 1960s. One-story, two-bay, frame, gable roof, Masonite siding. (NC)

SHADOWLAWN BOULEVARD

- 016 1479 Shadowlawn (C)
One-story, three-bay, brick-veneered Cape with Craftsman influence, built ca. 1925. Complex gable roof with jerkinhead and box cornice, covered with asphalt shingles. One-bay, pedimented gable-roofed porch supported by wrought iron replacement posts on ashlar bases. Windows are 6/1 DHSLS, some in pairs. Entrance contains an eight-light, one-panel Craftsman door.

Garage, ca. 1960. One-story, two-bay, concrete block, gable roof. (NC)
- 017 1480 Shadowlawn (C)
One-story, three-bay, brick-veneered bungalow with Craftsman influence, built ca. 1926-27. Complex gable roof with exposed rafter tails, covered with asphalt shingles. Partial-width, gable-front porch supported by battered ashlar piers. Windows are 6/1 DHSLS, some in pairs. Entrance contains a six-light, one-panel Craftsman door.

Garage, ca. 1950. One-story, two-bay, concrete block, hip roof. (NC)
- 018 1485 Shadowlawn (C)
One-story, three-bay, brick-veneered English cottage with Tudor influence, built ca. 1930. Complex gable roof with box cornice, covered with asphalt shingles. One-bay, gable-front porch supported by brick piers. Windows are 6/6 DHSLS, some in pairs. Entrance set in projecting vestibule with an asymmetrical gable roof, containing a single-light replacement door.

Garage, ca. 1930. One-story, two-bay, frame, gable roof, weatherboard siding. (C)

United States Department of the Interior
National Park Service

NATIONAL REGISTER OF HISTORIC PLACES
CONTINUATION SHEET

Shadowlawn Historic District
Memphis, Shelby County, TN

Section number 7 Page # 7

=====

- 019 1486 Shadowlawn (C)
One-story, three-bay, brick-veneered bungalow with Craftsman influence, built ca. 1930. Complex gable roof with jerkinhead and exposed rafter tails, covered with asphalt shingles; scroll sawn vent in gable end. Full-width, gable and hip-roofed porch supported by battered brick piers. Windows are Craftsman 3/1 DHSL, some in pairs. Entrance contains a multi-light; a multi-light double-door opens to the porch.
- Garage, ca. 1950. One-story, two-bay, concrete block, hip roof. (NC)
- 020 1489 Shadowlawn (C)
One-story, three-bay, brick-veneered bungalow with Craftsman influence, built ca. 1925. Complex gable roof with exposed rafter tails, covered with asphalt shingles. Partial-width, gable-front porch with jerkinhead, supported by battered brick piers. Windows are Craftsman multi-light/1 DHSL, some in pairs. Entrance contains a multi-light double-door.
- Garage, ca. 1950. One-story, one-bay, frame, gable roof, aluminum siding. (NC)
- 021 1490-92 Shadowlawn (C)
One-story, four-bay, brick-veneered double shotgun duplex with Craftsman influence, built ca. 1930. Complex gable roof with box cornice, covered with asphalt shingles. Two, one-bay, gable front porches supported by wrought iron replacement posts on brick bases. Windows are 6/1 DHSL. Entrances contain six-light, two-panel doors.
- Garage, ca. 1930. One-story, two-bay, frame, hip roof, asbestos siding. (C)
- 022 1495-97 Shadowlawn (C)
One-story, four-bay, brick-veneered double shotgun with Craftsman influence, built ca. 1930. Complex gable roof with box cornice, covered with asphalt shingles. Two, one-bay, gable front porches supported by battered box columns on brick bases. Windows are 6/1 DHSL. Entrances contain six-light, two-panel doors.
- Garage, ca. 1930. One-story, two-bay, frame, gable roof, weatherboard siding. (C)

(0-64)

United States Department of the Interior
National Park Service

NATIONAL REGISTER OF HISTORIC PLACES
CONTINUATION SHEET

Section number 7 Page # 8 Shadowlawn Historic District
Memphis, Shelby County, TN

=====

- 023 1496 Shadowlawn (C)
One-story, three-bay, brick-veneered bungalow with Craftsman influence, built ca. 1930. Complex gable roof with exposed rafter tails, covered with asphalt shingles; scroll sawn vent in gable end. Full-width, gable and hip-roofed porch supported by battered ashlar piers. Windows are Craftsman multi-light/1 DHSLS, some in pairs. Entrance contains a multi-light door.
- 024 1500 Shadowlawn (C)
One-story, three-bay, brick-veneered bungalow with Craftsman influence, built ca. 1926-27. Gable-front roof with exposed rafter tails, covered with asphalt shingles; lattice vent in gable end. Full-width, gable and hip-roofed porch supported by battered brick piers. Windows are Craftsman multi-light/1 DHSLS, some in pairs. Entrance contains a multi-light door.
- 025 1501 Shadowlawn (C)
One-story, three-bay, brick-veneered bungalow with Craftsman influence, built ca. 1925. Gable-front roof with jerkinhead and exposed rafter tails, covered with asphalt shingles. Partial-width, partially-undercut gable-front porch supported by brick piers. Exterior chimney flanks one side of porch. Windows are Craftsman multi-light/1 DHSLS, some in pairs. Entrance contains an eight-light, one-panel Craftsman door.
- 026 1505 Shadowlawn (C)
One-and-one-half story, three-bay, brick-veneered bungalow with Craftsman influence, built 1926-27. Complex hip and gable roof with rear airplane and exposed rafter tails, covered with asphalt shingles. Full-width, complex gable-roofed porch and porte cochere supported by battered ashlar piers. Windows are Craftsman multi-light/1 DHSLS; one pair altered to single-light, fixed sash. Entrance contains a two-light, four-panel replacement door.
- Back House, ca. 1926-27. Two-story, four-bay, frame, hip roof, weatherboard siding, 1/1 DHSLS, five-panel doors. (C)
- 027 1506 Shadowlawn (C)
One-story, four-bay, brick-veneered bungalow with Craftsman influence, built ca. 1926-27. Complex hip and gable roof with exposed rafter tails, covered with asphalt shingles. Partial-width, gable-front porch supported by brick piers; exterior chimney flanks one side of the porch. Windows are Craftsman 3/1 DHSLS, some in pairs. Entrance contains a multi-light door.
- Garage, ca. 1940. One-story, one-bay, frame, hip roof, weatherboard siding. (C)

United States Department of the Interior
National Park Service

NATIONAL REGISTER OF HISTORIC PLACES
CONTINUATION SHEET

Section number 7 Page # 9 Shadowlawn Historic District
Memphis, Shelby County, TN

=====

- 028 1509 Shadowlawn (C)
One-and-one-half story, five-bay, brick-veneered bungalow with Craftsman influence, built 1925. Complex gable roof with rear airplane and deep projecting eaves, covered with asphalt shingles. Partial-width, gable-front porch supported by battered ashlar piers. Windows are 6/1 DHSL, some in pairs. Entrance contains a twelve-panel replacement door.
- Garage, ca. 1925. One-story, two-bay, frame, gable roof, stucco and half-timber veneer siding. (C)
- 029 1510 Shadowlawn (C)
One-story, three-bay, brick-veneered bungalow with Craftsman influence, built ca. 1926-27. Complex hip and gable roof with jerkinheads and exposed rafter tails, covered with asphalt shingles. Partial-width, gable-front porch supported by battered brick piers. Windows are 6/1 DHSL, some in pairs. Entrance contains a multi-light door.
- Garage, ca. 1930. One-story, one-bay, frame, gable roof, Masonite siding. (C)
- 030 1515 Shadowlawn (C)
One-story, three-bay, brick and fieldstone English cottage with Tudor Revival influence, built ca. 1930. Complex gable roof with box cornice, covered with asphalt shingles; stucco and half-timber in gable ends. One-bay, gable-front side porch supported by battered fieldstone piers. Windows are 6/6 DHSL. Entrance set in projecting vestibule with assymetrical gable roof, containing a three-light Craftsman door set in a segmental-arched reveal.
- Garage, ca. 1930. One-story, one-bay, frame, hip roof, weatherboard siding. (C)
- 031 1516 Shadowlawn (C)
One-story, three-bay, brick-veneered bungalow with Craftsman influence, built ca. 1927. Gable-front roof with exposed rafter tails, covered with asphalt shingles; lattice vent in gable end. Full-width, gable and hip-roofed porch supported by battered ashlar piers. Windows are Craftsman multi-light/1 DHSL, some in pairs. Entrance contains a multi-light door.
- Garage, ca. 1927. One-story, one-bay, frame, gable roof, board and batten siding. (C)

United States Department of the Interior
National Park Service

NATIONAL REGISTER OF HISTORIC PLACES
CONTINUATION SHEET

Section number 7 Page # 10 Shadowlawn Historic District
Memphis, Shelby County, TN

=====

- 032 1519 Shadowlawn (C)
One-story, three-bay, brick-veneered bungalow with Craftsman influence, built ca. 1926-27. Complex gable roof with exposed rafter tails, covered with asphalt shingles. Partial-width, partially-undercut gable-front porch supported by brick piers. Windows are 9/1 DHSL, some in pairs or threes. Entrance contains a single-light replacement door.
- Garage, ca. 1950. One-story, two-bay, frame, gable roof, weatherboard siding. (NC)
- 033 1522 Shadowlawn (C)
One-story, three-bay, brick veneered bungalow with Craftsman influence, built ca. 1926-27. Complex gable roof with exposed rafter tails, covered with asphalt shingles. Partial-width, gable-front porch supported by brick piers. Windows are 9/1 DHSL, some in pairs. Entrance contains a six-light, one-panel Craftsman door.
- 034 1525 Shadowlawn (C)
One-and-one-half story, four-bay, brick-veneered English cottage with Tudor Revival influence, built ca. 1930. Complex gable roof with box cornice, covered with asphalt shingles. One-bay, undercut side porch supported by boxed columns, enclosed ca. 1970. Windows are 6/6 DHSL, some in pairs. Entrance in projecting vestibule with asymmetrical gable roof and flanking exterior chimney, and contains a four-light, semi-circular arched door.
- Garage, ca. 1930. One-story, one-bay, frame, gable roof, weatherboard siding. (C)
- 035 1526 Shadowlawn (C)
One-story, four-bay, brick-veneered bungalow with Craftsman influence, built ca. 1930. Complex hip and gable roof with jerkinhead and exposed rafter tails, covered with asphalt shingles. Partial-width, gable-front porch with jerkinhead, supported by battered brick piers. Windows are Craftsman 3/1 DHSL, some in pairs. Entrance contains a multi-light door.
- Garage, ca. 1930. One-story, one-bay, frame, gable roof, weatherboard siding. (C)
- 036 1535 Shadowlawn (C)
One-story, three-bay, brick-veneered bungalow with Craftsman influence, built ca. 1926-27. Gable-front roof with exposed rafter tails, covered with asphalt shingles. Full-width, gable and hip-roofed porch supported by battered ashlar piers. Windows are 6/1 DHSL, some in pairs. Entrance contains a multi-light door.

United States Department of the Interior
National Park Service

NATIONAL REGISTER OF HISTORIC PLACES
CONTINUATION SHEET

Section number 7 Page # 11 Shadowlawn Historic District
Memphis, Shelby County, TN
=====

1535 Shadowlawn, continued:

Garage, ca. 1930. One-story, two-bay, frame, gable roof, weatherboard siding. (C)

037 1536 Shadowlawn (C)
One-story, three-bay, brick-veneered L-plan Cape with Colonial Revival influence, built ca. 1940. Complex gable roof with box cornice, covered with asphalt shingles. One-bay, shed-roofed porch supported by wrought iron replacement posts. Windows are 8/8 DHSLS. Entrance contains a four-light, four-panel door.

038 1539 Shadowlawn (C)
One-story, three-bay, brick-veneered bungalow with Craftsman influence, built ca. 1928. Complex gable roof with exposed rafter tails, covered with asphalt shingles; scroll sawn vent in gable end. One-bay, gable-front porch supported by brick piers. Windows are Craftsman multi-light/1 DHSLS. Entrance contains six-panel replacement door.

Garage, ca. 1970. One-story, two-bay, concrete block, hip roof. (NC)

039 1542 Shadowlawn (C)
One-story, three-bay, brick-veneered bungalow with Craftsman influence, built ca. 1926-27. Gable-front roof with exposed rafter tails, covered with asphalt shingles. Partial-width, gable and hip-roofed porch supported by battered ashlar piers, partially enclosed ca. 1970. Windows are Craftsman 3/1 DHSLS, some in pairs. Entrance contains a single-light replacement door.

Garage, ca. 1960. One-story, two-bay, concrete block, flat roof. (NC)

040 1545 Shadowlawn (C)
One-story, three-bay, brick-veneered bungalow with Craftsman influence, built ca. 1926-27. Complex gable roof with exposed rafter tails, covered with asphalt shingles. Partial-width, gable-front porch supported by battered brick piers; and exterior chimney flanks one side of the porch. A metal-frame carport added side of house ca. 1970. Windows are Craftsman 3/1 DHSLS, some in pairs. Entrance contains a multi-light door.

041 1546 Shadowlawn (C)
One-story, three-bay, brick-veneered bungalow with Craftsman influence, built ca. 1926-27. Complex gable roof with exposed rafter tails, covered with asphalt shingles. Partial-width, gable-front porch supported by brick piers; an exterior chimney flanks one side of the porch. Windows are 1/1 DHSLS, some in pairs. Entrance contains a single-light door.

United States Department of the Interior
National Park Service

NATIONAL REGISTER OF HISTORIC PLACES
CONTINUATION SHEET

Shadowlawn Historic District
Memphis, Shelby County, TN

Section number 7 Page # 12

=====

- 042 1549 Shadowlawn (C)
One-story, three-bay, brick-veneered bungalow with Craftsman influence, built ca. 1927. Gable-front roof with exposed rafter tails, covered with asphalt shingles; scroll sawn vent in gable end. Partial-width, gable and hip-roofed porch supported by brick piers, partially enclosed in ca. 1965. Windows are Craftsman 3/1 DHSL, some in pairs or threes. Entrance contains a multi-light door.
- 043 1550 Shadowlawn (C)
One-story, three-bay, ashlar-veneered modified bungalow with Craftsman influence, built ca. 1930. Complex gable roof with exposed rafter tails, covered with asphalt shingles. One-bay, undercut side porch supported by battered ashlar piers. Windows are 6/1 DHSL. Entrance covered by a gabled hood supported by knee brace brackets, containing a single-light semi-circular arched door.
- Garage, ca. 1930. One-story, one-bay, frame, gable roof, weatherboard siding. (C)
- 044 1555 Shadowlawn (C)
One-and-one-half story, three-bay, brick-veneered bungalow with Craftsman influence, built ca. 1926-27. Gable-front roof with exposed rafter tails, covered with asphalt shingles. Partial-width, gable and hip-roofed porch supported by battered brick piers. Windows are 6/1 DHSL, some in pairs. Entrance contains a single-light door.
- Garage, ca. 1930. One-story, two-bay, frame, gable roof, asphalt roll siding. (C)
- 045 1556 Shadowlawn (C)
One-story, three-bay, brick-veneered bungalow with Craftsman influence, built ca. 1930. Gable-front roof with exposed rafter tails, covered with asphalt shingles. Partial-width, gable-front porch supported by brick piers. Windows are 1/1 DHSL, some in pairs. Entrance contains a two-panel replacement door.
- Garage, ca. 1930. One-story, one-bay, frame hip roof, weatherboard siding. (C)
- 046 1559 Shadowlawn (C)
One-story, three-bay, brick-veneered bungalow with Craftsman influence, built ca. 1926-27. Complex gable roof with exposed rafter tails, covered with asphalt shingles. Partial-width, gable-front roof with jerkinhead, supported by battered brick piers. Windows are 6/1 DHSL, some in pairs. Entrance contains a single-light door.
- Garage, ca. 1930. One-story, two-bay, frame, gable roof, weatherboard siding. (C)

United States Department of the Interior
National Park Service

NATIONAL REGISTER OF HISTORIC PLACES
CONTINUATION SHEET

Section number 7 Page # 13 Shadowlawn Historic District
Memphis, Shelby County, TN

-
- 047 1560 Shadowlawn (C)
One-story, three-bay, brick-veneered bungalow with Craftsman influence, built ca. 1927. Complex gable roof with exposed rafter tails, covered with asphalt shingles; lattice vent in gable end. Full-width, gable and hip-roofed porch supported by battered brick piers. Windows are Craftsman 3/1 DHSL, some in pairs. Entrance contains a multi-light door; a multi-light double-door opens to the porch.
- 048 1563 Shadowlawn (C)
One-story, three-bay, brick-veneered bungalow with Craftsman influence, built ca. 1927. Gable-front roof with exposed rafter tails, covered with asphalt shingles; scroll sawn vent in gable end. One-bay, gable-front porch supported by brick piers. Windows are Craftsman 3/1 DHSL, some in pairs. Entrance contains a single-light door.
- Garage, ca. 1927. One-story, one-bay, frame, gable roof, vinyl siding. (C)
- 049 1564 Shadowlawn (C)
One-story, four-bay, brick-veneered English cottage with Tudor Revival influence, built ca. 1935. Side gable roof with boxed cornice, covered with asphalt shingles. One-bay, undercut side porch, enclosed ca. 1970. Windows are 1/1 DHSL. Entrance set in projecting vestibule with asymmetrical gable roof, containing a solid replacement door.
- Garage, ca. 1935. One-story, one-bay, gable roof, weatherboard siding, carport addition ca. 1970. (C)
- 050 1569 Shadowlawn (C)
One-story, three-bay, brick-veneered gable-front double-pile cottage with Spanish Colonial Revival influence, built ca. 1927. One-bay, hip-roofed addition to side ca. 1960, set back from front building line. Complex gable roof with box cornice, covered with asphalt shingles. Partial-width, undercut porch supported by brick piers spanned by semi-circular arches. Windows are 6/6 DHSL, some in pairs. Entrance contains a semi-circular arched solid replacement door.
- Garage, ca. 1927. One-story, one-bay, frame, gable roof, weatherboard siding. (C)
- 051 1570 Shadowlawn (C)
One-and-one-half story, four-bay, brick-veneered modified Cape with Colonial Revival influence, built 1935. Complex gable roof with box cornice, covered with asphalt shingles. Windows are 6/6 DHSL. Entrance covered with gable hood supported by brackets, containing a four-light, four-panel door.

United States Department of the Interior
National Park Service

NATIONAL REGISTER OF HISTORIC PLACES
CONTINUATION SHEET

Section number 7 Page # 14 Shadowlawn Historic District
Memphis, Shelby County, TN
=====

- 052 1575 Shadowlawn (C)
One-story, three-bay, brick-veneered bungalow with Craftsman influence, built ca. 1927. Gable-front roof with exposed rafter tails, covered with asphalt shingles; lattice vent in gable end. Full-width, gable and hip-roofed porch supported by battered ashlar piers. Windows are Craftsman multi-light/1 DHSL. Entrance contains a multi-light door.
- Garage, ca. 1927. One-story, one-bay, frame, gable roof, weatherboard siding. (C)
- 053 1576 Shadowlawn (C)
One-story, three-bay, brick-veneered bungalow with Craftsman influence, built ca. 1930. Gable-front roof with exposed rafter tails, covered with asphalt shingles; lattice vent in gable end. Partial-width, gable and shed-roofed porch supported by brick piers. Windows are Craftsman 3/1 DHSL, in pairs. Entrance contains a single-light replacement door.
- 054 1579 Shadowlawn (C)
One-story, three-bay, brick-veneered bungalow with Craftsman influence, built ca. 1927. Complex gable roof, covered with asphalt shingles; vinyl siding in gable end and eaves. Partial-width, gable-front porch supported by brick piers. Windows are Craftsman multi-light/1 DHSL. Entrance contains a solid replacement door.
- 055 1580 Shadowlawn (C)
One-and-one-half story, three-bay, brick-veneered Cape with Colonial Revival influence, built ca. 1940. Complex gable roof with box cornice, covered with asphalt shingles. One-bay, hip-roofed porch supported by wrought iron replacement posts. Windows are 6/6 DHSL. Entrance contains a six-panel replacement door.
- Garage, ca. 1940. One-story, one-bay, frame, gable roof, weatherboard siding. (C)
- 056 1583 Shadowlawn (C)
One-story, three-bay, brick-veneered bungalow with Craftsman influence, built ca. 1927. Gable-front roof with jerkinhead and exposed rafter tails, covered with asphalt shingles. Full-width, gable and hip-roofed porch with jerkinhead, supported by battered brick piers. Windows are Craftsman multi-light/1 DHSL. Entrance contains a six-panel replacement door.
- Garage, ca. 1927. One-story, one-bay, frame, gable roof, weatherboard siding. (C)

United States Department of the Interior
National Park Service

NATIONAL REGISTER OF HISTORIC PLACES
CONTINUATION SHEET

Section number 7 Page # 15 Shadowlawn Historic District
Memphis, Shelby County, TN
=====

- 057 1584 Shadowlawn (C)
One-story, three-bay, brick-veneered Cape with Colonial Revival influence, built ca. 1935. Side gable roof with box cornice, covered with asphalt shingles; gablet dormer centered over door. Partial-width, shed-roofed porch supported by wrought iron posts added ca. 1970. Windows are 1/1 DHSL. Entrance contains a six-panel door.

Garage, ca. 1935. One-story, one-bay, frame, gable roof, weatherboard siding. (C)
- 058 1589 Shadowlawn (C)
One-story, three-bay, brick-veneered bungalow with Craftsman influence, built ca. 1927. Complex hip and gable roof with jerkinhead and exposed rafter tails, covered with asphalt shingles. Partial-width, gable-front porch supported by battered brick piers. Windows are Craftsman 3/1 DHSL. Entrance contains a multi-light door.
- 059 1590 Shadowlawn (C)
One-story, three-bay, brick-veneered bungalow with Craftsman influence, built ca. 1930. Gable-front roof with exposed rafter tails, covered with asphalt shingles. Partial-width, gable-front porch supported by brick piers. Windows are Craftsman 3/1 DHSL, some in threes. Entrance contains a multi-light door.

Garage, ca. 1940. One-story, two-bay, frame, gable roof exterior plywood siding. (C)
- 060 1593 Shadowlawn (C)
One-story, three-bay, brick-veneered bungalow with Craftsman influence, built ca. 1927. Gable-front roof with exposed rafter tails, covered with asphalt shingles; scroll sawn vent in gable end. Full-width, gable and hip-roofed porch supported by brick piers. Windows are Craftsman multi-light/1 DHSL. Entrance contains multi-light door.
- 061 1594 Shadowlawn (C)
One-story, three-bay, brick-veneered Cape with Colonial Revival influence, built ca. 1940. Side-gable roof with box cornice, covered with asphalt shingles. One-bay, gable-front porch supported by fluted metal replacement columns. Windows are 2/2 DH replacements. Entrance contains a six-panel door.

Garage, ca. 1940. One-story, one-bay, frame, gable roof, weatherboard siding. (C)

United States Department of the Interior
National Park Service

NATIONAL REGISTER OF HISTORIC PLACES
CONTINUATION SHEET

Section number 7 Page # 16 Shadowlawn Historic District
Memphis, Shelby County, TN
=====

062 1597 Shadowlawn (C)
One-story, three-bay, brick-veneered English cottage with Tudor Revival influence, built ca. 1940. Side-gable roof with boxed cornice, covered with asphalt shingles. One-bay, side-gable side porch supported by box columns. Windows are 6/6 DHSL, some in pairs; one pair altered to "picture" window. Entrance in projecting vestibule with assymetrical gable roof, containing a four-light, semi-circular arched door.

Garage, ca. 1940. One-story, two-bay, frame, gable roof, added brick veneer, with carport addition ca. 1970. (NC)

063 1600 Shadowlawn (C)
One-story, three-bay, brick-veneered Cape with Colonial Revival influence, built ca. 1940. Side-gable roof with boxed cornice, covered with asphalt shingles. Partial-width, shed-roofed porch supported by wrought iron posts added ca. 1970. Windows are 6/6 DHSL, some in pairs. Entrance contains a fan-light, four-panel replacement door.

Garage, ca. 1940. One-story, one-bay, frame, gable roof, weatherboard siding. (C)

SOUTH WELLINGTON

064 1479 South Wellington (C)
One-story, four-bay, brick-veneered bungalow with Craftsman influence, built ca. 1925. Gable-front roof with exposed rafter tails, covered with asphalt shingles; gable ends are half-timbered and stuccoed. Partial-width, L-plan, gable-front porch supported by battered brick piers. Windows are 3/1 DHSL. Entrance contains a three-light double-door.

Garage, ca. 1925. One-story, one-bay, frame, gable roof, weatherboard siding. (C)

065 1480 South Wellington (C)
One-story, three-bay, brick-veneered bungalow with Craftsman influence, built in ca. 1926-27. Gable-front roof with exposed rafter tails, covered with asphalt shingles. Full-width, gable and hip roofed porch supported by battered ashlar piers. Windows are Craftsman multi-light/1 DHSL. Entrance contains a three-light door.

(8-86)

United States Department of the Interior
National Park Service

NATIONAL REGISTER OF HISTORIC PLACES
CONTINUATION SHEET

Section number 7 Page # 17 Shadowlawn Historic District
Memphis, Shelby County, TN

=====

- 066 1485 South Wellington (C)
One-story, four-bay, brick-veneered bungalow with Craftsman influence, built in ca. 1925. Gable-front roof with exposed rafter tails, covered with asphalt shingles. Full-width, gable and hip-roofed porch supported by battered ashlar piers, partially enclosed ca. 1970. Windows are Craftsman multi-light/1 DHSL. Entrance contains a Craftsman multi-light door.
- Garage, ca. 1940. One-story, one-bay, frame, gable roof, shiplap siding. (C)
- 067 1486 South Wellington (NC)
One-and-one-half story, four-bay, stone-veneered Cape with Colonial Revival influence, built ca. 1950. Complex gable roof with box cornice, covered with asphalt shingles. Partial-width, centered, incised porch. Windows are 6/6 DHSL. Entrance contains a single-light door.
- 068 1489 South Wellington (C)
One-and-one-half story, three-bay, brick-veneered bungalow with Craftsman influence, built ca. 1925. Complex gable roof with exposed rafter tails, covered with asphalt shingles. Full-width, gable and hip-roofed porch supported by battered ashlar piers. Windows are 3/1 DHSL. Entrance contains a multi-light door flanked by multi-light sidelights.
- 069 1492 South Wellington (C)
One-and-one-half story, three-bay, brick-veneered bungalow with Craftsman influence, built ca. 1925. Gable front roof with side shed dormers and exposed rafter tails, covered with asphalt shingles. Partial-width, undercut porch supported by brick piers, partially enclosed ca. 1970. Windows are 1/1 DHSL, some in pairs. Entrance contains a multi-light door.
- Garage, ca. 1926-27. One-story, two-bay, gable roof, weatherboard siding. (C)
- 070 1495 South Wellington (C)
One-story, four-bay, brick-veneered bungalow with Craftsman influence, built in ca. 1925. Gable-front roof with exposed rafter tails, covered with asphalt shingles. Full-width, gable and hip-roofed porch supported by brick piers. Windows are Craftsman multi-light/1 DHSL. Entrance contains a Craftsman multi-light door.
- Garage, ca. 1925. One-story, one-bay, frame, gable roof, weatherboard siding. (C)

United States Department of the Interior
National Park Service

NATIONAL REGISTER OF HISTORIC PLACES
CONTINUATION SHEET

Section number 7 Page # 18 Shadowlawn Historic District
Memphis, Shelby County, TN

-
- 071 1496 South Wellington (C)
One-story, three-bay, brick-veneered bungalow with Craftsman influence, built ca. 1925. Gable-front roof with exposed rafter tails, covered with asphalt shingles. Partial-width, gable-front porch, supported by battered ashlar piers. Windows are 1/1 DHSL, in pairs. Entrance contains a multi-light door.
- Garage, ca. 1925. One-story, one-bay, frame, gable roof, weatherboard siding. (C)
- 072 1499 South Wellington (C)
One-and-one-half story, four-bay, brick-veneered bungalow with Craftsman influence, built in ca. 1925. Gable-front roof with added rear airplane and exposed rafter tails, covered with asphalt shingles. Full-width, gable and hip-roofed porch supported by battered brick piers. Windows are Craftsman multi-light/1 DHSL. Entrance contains a multi-light door.
- Garage, ca. 1950. One-story, two-bay, frame, gable roof, board and batten siding. (NC)
- 073 1500 South Wellington (C)
One-and-one-half story, four-bay, brick-veneered bungalow with Craftsman influence, built ca. 1926-27. Gable-front roof with added rear airplane and exposed rafter tails, covered with asphalt shingles. Full-width, gable and hip-roofed porch, supported by brick piers. Windows are 6/1 DHSL. Entrance contains a multi-light door flanked by multi-light sidelights.
- 074 1505 South Wellington (C)
One-story, four-bay, brick-veneered bungalow with Craftsman influence, built in ca. 1925. Gable-front roof with exposed rafter tails, covered with asphalt shingles. Full-width, gable and hip-roofed porch supported by brick piers; porch partially enclosed ca. 1980. Windows are Craftsman multi-light/1 DHSL. Entrance contains a multi-light door.
- Garage, ca. 1925. One-story, one-bay, frame, gable roof, weatherboard siding. (C)
- 075 1506 South Wellington (C)
One-and-one-half story, three-bay, brick and ashlar-veneered English cottage with Tudor Revival influence, built ca. 1930. Complex gable roof with box cornice, covered with asphalt shingles. Windows are 2/2 DHSL. Entrance set in projecting vestibule with assymetrical gable roof, containing a semi-circular single-light door.
- Garage, ca. 1950. One-story, two-bay, frame, gable roof, weatherboard siding. (NC)

United States Department of the Interior
National Park Service

NATIONAL REGISTER OF HISTORIC PLACES
CONTINUATION SHEET

Section number 7 Page # 19 Shadowlawn Historic District
Memphis, Shelby County, TN

=====

- 076 1509 South Wellington (C)
One-story, four-bay, brick-veneered bungalow with Craftsman influence, built ca. 1926-27. Complex gable roof with exposed rafter tails, covered with asphalt shingles; scroll sawn vent in gable end. Full-width, gable and hip-roofed porch supported by battered ashlar piers. Windows are Craftsman 4/1 DHSL, in pairs. Entrance contains a multi-light door.
- 077 1510 South Wellington (C)
One-and-one-half story, four-bay, brick veneered bungalow with Craftsman and Tudor influence, built ca. 1930. Complex hip and gable roof with exposed rafter tails, covered with asphalt shingles; gable end has stucco and curved half-timbers. Partial-width, gable-front porch supported by battered brick piers. Windows are 6/1 DHSL. Entrance contains a multi-light door.
- 078 1515 South Wellington (C)
One-story, four-bay, brick-veneered bungalow with Craftsman influence, built ca. 1926-27. Complex gable roof with exposed rafter tails, covered with asphalt shingles; scroll sawn vent in gable end. Full-width, gable and hip roofed porch supported by battered brick piers. Windows are 4/1 DHSL. Entrance contains a solid replacement double-door.
- Garage, ca. 1950. One-story, three-bay, frame, hip roof with undercut carport, shiplap siding. (NC)
- 079 1516 South Wellington (C)
One-and-one-half story, four-bay, brick-veneered bungalow with Craftsman influence, built ca. 1930. Complex gable roof with exposed rafter tails, covered with asphalt shingles; scroll sawn vent in gable end. Partial-width, gable-front porch supported with battered rubblestone piers. Windows are Craftsman 3/1 DHSL. Entrance contains a three-light Craftsman door.
- 080 1519 South Wellington (C)
One-story, four-bay, brick-veneered English cottage with Tudor Revival influence, built ca. 1930. Complex gable roof with boxed cornice, covered with asphalt shingles. Partial-width, offset polygonal-roofed porch, supported by brick piers spanned with semi-circular arches. Windows are 6/1 DHSL, some in pairs. Entrance set within projecting vestibule contains a semi-circular single-light door, flanked by an ashlar-veneered exterior chimney.
- Garage, ca. 1960. One-story, two-bay, frame, gable roof, weatherboard siding. (NC)

United States Department of the Interior
National Park Service

NATIONAL REGISTER OF HISTORIC PLACES
CONTINUATION SHEET

Section number 7 Page # 20 Shadowlawn Historic District
Memphis, Shelby County, TN
=====

- 081 1520 South Wellington (C)
One-and-one-half story, four-bay, brick-veneered English cottage with Tudor Revival influence, built ca. 1930. Complex gable roof with boxed cornice, covered with asphalt shingles. One-bay, side undercut porch, enclosed ca. 1980. Entrance in projecting vestibule contains a single-light door, flanked by an exterior chimney.
- 082 1525 South Wellington (C)
One-story, four-bay, brick-veneered English cottage with Tudor Revival influence, built ca. 1926-27. Complex gable roof with box cornice, covered with asphalt shingles. One-bay, off-center gable-front porch supported by ashlar piers; entrance set in projecting ashlar vestibule with asymmetrical gable roof, flanked by exterior ashlar chimney. Entrance contains a semi-circular single-light door.
- Garage, ca. 1960. One-story, two-bay, concrete block, hip roof. (NC)
- 083 1535 South Wellington (C)
One-story, four-bay, brick-veneered bungalow with Craftsman influence, built ca. 1926-27. Complex gable roof with exposed rafter tails, covered with asphalt shingles; scroll sawn vent in gable end. Full-width, gable and hip roof porch supported by brick piers. Windows are 1/1 DHSL. Entrance has a Craftsman multi-light door.
- Garage, ca. 1960. One-story, one-bay, concrete block, hip. (NC)
- 084 1536 South Wellington (NC)
One-story, five-bay, brick-veneered Cape with Minimal Traditional influence, built ca. 1950. Complex gable roof with box cornice, covered with asphalt shingles. One-bay, shed-roofed porch supported by wrought iron posts. Windows are 6/6 DHSL. Entrance contains a six-panel door.
- 085 1541 South Wellington (C)
One-story, three-bay, brick-veneered bungalow with Craftsman influence, built ca. 1926-27. Gable-front roof with exposed rafter tails, covered with asphalt shingles; scroll sawn vent in gable end. Full-width, gable and hip roofed porch supported by battered brick piers. Windows are 1/1 DHSL, some in pairs. Entrance contains a Craftsman multi-light, one-panel door.
- Garage, ca. 1950. One-story, one-bay, concrete block, gable roof. (NC)

United States Department of the Interior
National Park Service

NATIONAL REGISTER OF HISTORIC PLACES
CONTINUATION SHEET

Section number 7 Page # 21 Shadowlawn Historic District
Memphis, Shelby County, TN
=====

- 086 1542 South Wellington (C)
One-story, three-bay, brick-veneered bungalow with Craftsman influence, built ca. 1926-27. Complex gable roof with exposed rafter tails, covered with asphalt shingles. Partial-width, partially-undercut, gable-front porch supported by brick piers. Windows are 1/1 DHSL, some in pairs and triples. Entrance contains a single-light door.
- 087 1545 South Wellington (C)
One-story, four-bay, brick-veneered bungalow with Craftsman influence, built ca. 1926-27. Complex gable roof with exposed rafter tails, covered with asphalt shingles. Full-width, hip and gable roofed porch supported by battered ashlar piers. Windows are 6/1 DHSL. Entrance contains a multi-light door.
- Garage, ca. 1970s. One-story, two-bay, frame, gable roof, Masonite siding. (NC)
- 088 1546 South Wellington (C)
One-story, three-bay, brick-veneered bungalow with Craftsman influence, built ca. 1927-28. Complex gable roof with plain eaves and jerkinheads, covered with asphalt shingles. Windows are Craftsman 3/1 DHSL, some in pairs. Partial-width, gable-front porch with jerkinhead, supported by battered brick piers. Entrance contains a Craftsman multi-light door.
- Garage, ca. 1927-28. One-story, two-bay, frame, gable roof with jerkinhead covered with asphalt shingles, aluminum siding. (C)
- 089 1549 South Wellington (C)
One-story, three-bay, brick-veneered English cottage with Tudor Revival influence, built ca. 1926-27. Complex gable and hip roof with box cornice, covered with asphalt shingles. One-bay, gable-front porch supported by ashlar piers spanned by brick elliptical arch; porch modified in ca. 1970s with two-bay, gable-front extension, supported by wrought iron posts. Windows are 1/1 DHSL, in pairs. Entrance in projecting vestibule with assymetrical gable roof, containing a semi-circular, single-light door, flanked by exterior brick chimney with ashlar quoins.
- 090 1550 South Wellington (C)
One-story, three-bay, brick-veneered bungalow with Craftsman influence, built ca. 1926-27. Complex gable roof with jerkinhead and exposed rafter tails, covered with asphalt shingles. Partial-width, gable-front porch supported by brick piers. Windows are Craftsman 3/1 DHSL, some in pairs. Entrance contains a multi-light door.

United States Department of the Interior
National Park Service

NATIONAL REGISTER OF HISTORIC PLACES
CONTINUATION SHEET

Section number 7 Page # 22 Shadowlawn Historic District
Memphis, Shelby County, TN

=====

- 091 1555 South Wellington (C)
One-story, three-bay, brick-veneered bungalow with Craftsman influence, built ca. 1926-27. Complex gable roof with jerkinhead and exposed rafter tails, covered with asphalt shingles. Partial-width, gable-front porch supported by battered brick piers. Windows are Craftsman 3/1 DHSL, some in pairs. Entrance contains a multi-light door.
- Garage, ca. 1926-27. One-story, one-bay, frame, gable roof, weatherboard siding. (C)
- 092 1556 South Wellington (NC)
One-story, three-bay, brick veneered ranch with Modernist Traditional influence, built ca. 1965. Complex gable roof with box cornice, covered with asphalt shingles. One-bay, undercut porch supported by wrought iron posts. Windows are 2/2 DH metal-frame sash lights. Entrance contains a six-panel door.
- Garage, ca. 1965. One-story, one-bay, frame, gable roof, weatherboard siding. (NC)
- 093 1559 South Wellington (C)
One-story, three-bay, brick-veneered bungalow with Craftsman influence, built ca. 1925. Complex gable roof with exposed rafter tails, covered with asphalt shingles; gable end has a scroll sawn vent. Full-width, gable and hip-roofed porch supported by battered ashlar piers. Windows are Craftsman 4/1 DHSL, some in pairs. Entrance contains a single-light replacement door.
- 094 1560 South Wellington (C)
One-story, three-bay, brick-veneered modified Cape with Colonial Revival influence, built ca. 1935. Side gable roof with box cornice and eyebrow dormers, covered with asphalt shingles. Entrance covered with gabled hood with segmental frieze, supported by scroll sawn brackets and added wrought iron posts. Windows are 6/6 DHSL, some in pairs. Entrance contains a multi-light door.
- Garage, ca. 1960. One-story, one-bay, frame, gable roof, weatherboard siding. (NC)
- 095 1564 South Wellington (C)
One-story, three-bay, brick-veneered modified bungalow with Colonial Revival and Craftsman influence, built ca. 1930. Complex gable roof with exposed rafter tails, covered with asphalt shingles. One-bay, gable-front porch supported by battered ashlar piers, enclosed in ca. 1950; side porch covered with gable roof supported by box columns. Windows are 6/6 DHSL, some in pairs. Entrance contains a single-light door.

United States Department of the Interior
National Park Service

NATIONAL REGISTER OF HISTORIC PLACES
CONTINUATION SHEET

Section number 7 Page # 23 Shadowlawn Historic District
Memphis, Shelby County, TN
=====

096 1565 South Wellington (C)
One-story, three-bay, brick-veneered double-pile cottage with Spanish Eclectic influence, built ca. 1926-27. Complex hip and gable roof with exposed rafter tails, covered with asphalt shingles. Partial-width, gable-front porch supported by brick piers spanned with semi-circular arches. Windows are 6/1 DHSL. Entrance contains a semi-circular arched six-light door; a multi-light double-door opens to a front patio.

Storage Shed, ca. 1970. One-story, one-bay, frame, gable roof, Masonite siding. (NC)

097 1569 South Wellington (C)
One-story, three-bay, brick-veneered bungalow with Craftsman influence, built ca. 1926-27. Gable-front roof with exposed rafter tails, covered with asphalt shingles. Gable and hip-roofed porch supported by battered brick piers, glassed-in ca. 1970. Windows are Craftsman 3/1 DHSL. Entrance contains a single-light door.

Storage Shed, ca. 1970. One-story, one-bay, frame, gable roof, Masonite siding. (NC)

098 1570 South Wellington (C)
One-story, three-bay, brick-veneered Cape with Colonial Revival influence, built ca. 1930. Complex gable roof with box cornice, covered with asphalt shingles. Partial-width, gable-front porch supported by box columns. Windows are 6/6 DHSL. Entrance contains a single-light door.

Garage, ca. 1970. One-story, one-bay, frame, gable roof, exterior plywood siding. (NC)

099 1574 South Wellington (C)
One-and-one-half story, three-bay, brick-veneered bungalow with Craftsman influence, built ca. 1930. Complex gable roof with rear airplane and exposed rafter tails, covered with asphalt shingles. Full-width, gable and hip-roofed porch supported by brick piers. Windows are Craftsman multi-light/1 DHSL; two sets of window pairs altered to multi-light fixed sashes ca. 1980. Entrance contains a six-panel replacement door.

100 1575 South Wellington (C)
One-story, three-bay, brick-veneered bungalow with Craftsman influence, built ca. 1927. Complex gable roof with exposed rafter tails, covered with asphalt shingles. Partial-width, gable-front porch supported by brick piers, enclosed ca. 1970. Windows are Craftsman multi-light/1 DHSL. Entrance contains a single-light replacement door.

United States Department of the Interior
National Park Service

NATIONAL REGISTER OF HISTORIC PLACES
CONTINUATION SHEET

Section number 7 Page # 24 Shadowlawn Historic District
Memphis, Shelby County, TN
=====

- 101 1579 South Wellington (C)
One-story, three-bay, brick-veneered Cape with Minimal Traditional influence, built ca. 1930. Complex gable roof with box cornice, covered with asphalt shingles; gable end has board and batten siding with scalloped drip edge. Partial-width, gable and hip-roofed porch supported by wrought iron replacement posts. Windows are 6/6 DHSL, some in pairs. Entrance contains a Colonial Revival three-light, four-panel door.
- Garage, ca. 1930. One-story, one-bay, frame, gable roof, weatherboard siding. (C)
- 102 1580 South Wellington (C)
One-story, three-bay, brick-veneered Cape with Colonial Revival influence, built ca. 1930. Side gable roof with box cornice, covered with asphalt shingles. One-bay, closed-pediment portico supported by wrought iron replacement posts. Windows are 6/6 DHSL, some in pairs. Entrance contains a Colonial Revival three-light, four-panel double replacement door.
- 103 1583 South Wellington (C)
One-story, three-bay, brick-veneered English cottage with Tudor Revival influence, built ca. 1930. Complex gable roof with box cornice, covered with asphalt shingles. Windows are 6/6 DHSL, some in pairs. Entrance set within projecting vestibule with assymetrical gable roof, and contains a four-light, six-panel replacement door.
- Garage, ca. 1930. One-story, one-bay, frame, gable roof, novelty siding. (C)
- 104 1584 South Wellington (NC)
One-and-one-half story, three-bay, brick-veneered modified ranch with Western Traditional influence, built ca. 1980. Complex gable roof with box cornice, covered with asphalt shingles. Windows are 6/6 DHSL. Entrance has a three-panel door.
- 105 1587 South Wellington (C)
One-story, three-bay, brick-veneered modified Cape with Colonial Revival influence, built ca. 1930. Complex gable roof with box cornice, covered with asphalt shingles. One-bay, flat-roofed porch supported by wrought iron replacement posts. Windows are 6/6 DHSL. Entrance contains a six-panel door flanked by fluted Doric pilasters.
- Garage, ca. 1930. One-story, one-bay, frame, gable roof, weatherboard siding. (C)

United States Department of the Interior
National Park Service

NATIONAL REGISTER OF HISTORIC PLACES
CONTINUATION SHEET

Section number 7 Page # 25 Shadowlawn Historic District
Memphis, Shelby County, TN
=====

- 106 1590 South Wellington (NC)
One-story, four-bay, ashlar-veneered ranch with Western Traditional influence, built ca. 1980. Side gable roof with box cornice, covered with asphalt shingles. Partial-width, undercut porch supported by wrought iron posts. Garage bay to side of porch integral to house block. Windows are 6/6 DHSL. Entrance contains a six-panel door.
- 107 1593 South Wellington (C)
One-story, four-bay, ashlar-veneered modified L-plan Cape with Colonial Revival influence, built ca. 1930. Complex gable roof with box cornice, covered with asphalt shingles. One-bay, undercut porch supported by ashlar piers spanned by a semi-circular arch; side one-bay undercut porch enclosed ca. 1970. Windows are 1/1 DHSL. Entrance contains a four-light, four-panel door.

Garage, ca. 1960. One-story, two-bay, frame, hip roof, weatherboard siding. (NC)
- 108 1594 South Wellington (C)
One-story, three-bay, ashlar-veneered modified Cape with Colonial Revival influence, built ca. 1940. Complex gable roof with box cornice, covered with asphalt shingles. Partial-width, gable-front porch supported by columns with Doric capitals. Windows are 6/6 DHSL, some in pairs. Entrance contains a six-panel door.
- 109 1599 South Wellington (C)
One-story, four-bay, ashlar-veneered English cottage with Tudor Revival influence, built ca. 1930. Complex gable roof with box cornice, covered with asphalt shingles. Side one-bay undercut porch enclosed ca. 1970. Windows are 6/6 and 4/4 DHSL, some in groups of three. Entrance set in projecting vestibule with assymetrical gable roof, contains a semi-circular single-light door.

Garage, ca. 1960. One-story, two-bay, frame, hip roof, weatherboard siding. (NC)
- 110 1600 South Wellington (NC)
One-story, four-bay, brick-veneered L-plan cottage with Minimal Traditional influence, built ca. 1930 and altered in ca. 1970. Complex hip roof with box cornice, covered with asphalt shingles. Undercut porch enclosed ca. 1970. Windows are 6/6 DH replacements in reveals shortened with added wood paneled bulkheads. Entrance contains a twelve-light, X-panel replacement door.

Garage, ca. 1970. One-story, two-bay, concrete block and frame, hip roof. (NC)

United States Department of the Interior
National Park Service

NATIONAL REGISTER OF HISTORIC PLACES
CONTINUATION SHEET

- Shadowlawn Historic District
Memphis, Shelby County, TN
- Section number 7 Page # 26
- =====
- 111 1609 South Wellington (C) (also 461 Essex Street)
One-story, five bay, brick veneered duplex Cape with Minimal Traditional influence, built ca. 1935. Complex gable roof with box cornice, covered with asphalt shingles. One-bay, shed-roofed porch supported by simple posts. Windows are 6/6 and 1/1 DHSL. Entrance contains a four-light, four-panel door.
- Garage, ca. 1935. One-story, two-bay, frame, gable roof, weatherboard siding. (C)
- 112 1610 South Wellington (C) (also 475 Essex Street)
One-story, five bay, brick veneered duplex Cape with Minimal Traditional influence, built ca. 1935. Complex gable roof with box cornice, covered with asphalt shingles. One-bay, shed-roofed porch supported by simple posts. Windows are 6/6 and 1/1 DHSL. Entrance contains a four-light, four-panel door.
- Garage, ca. 1935. One-story, two-bay, frame, gable roof, weatherboard siding. (C)
- 113 1614 South Wellington (C)
One-story, three-bay, brick-veneered bungalow with Craftsman influence, built ca. 1926-27. Side gable roof with exposed rafter tails, covered with asphalt shingles. Full-width, shed-roofed porch supported by brick piers, enclosed ca. 1970. Windows are Craftsman multi-light/1 DHSL. Entrance contains a single-light replacement door.
- Garage, ca. 1926-27. One-story, one-bay, frame, gable roof, aluminum siding. (C)
- 114 1615 South Wellington (C)
One-story, three-bay, brick-veneered bungalow with Craftsman influence, built in ca. 1927. Gable-front roof with exposed rafter tails, covered with asphalt shingles. Full-width, hip and gable-roofed porch supported by brick piers. Windows are Craftsman 3/1 DHSL, some in pairs. Entrance contains an eight-light, one-panel Craftsman door.
- 115 1619 South Wellington (C)
One-story, three-bay, brick-veneered bungalow with Craftsman influence, built ca. 1927. Gable-front roof with jerkinhead and exposed rafter tails, covered with asphalt shingles. Partial-width, gable-front porch with jerkinhead, supported by battered brick piers. Windows contain Craftsman multi-light/1 DHSL. Entrance contains a multi-light door.
- Garage, ca. 1960. One-story, one-bay, frame, gable roof, Masonite siding. (NC)

United States Department of the Interior
National Park Service

NATIONAL REGISTER OF HISTORIC PLACES
CONTINUATION SHEET

Section number 7 Page # 27 Shadowlawn Historic District
Memphis, Shelby County, TN
=====

- 116 1620 South Wellington (C)
One-story, three-bay, brick-veneered bungalow with Craftsman influence, built ca. 1927. Gable-front roof with exposed rafter tails, covered with asphalt shingles. Full-width, gable and hip-roofed porch supported by battered brick piers. Windows are 6/1 DHSLS. Entrance contains an eight-light, one-panel Craftsman door flanked by 1/4 length four-light sidelights.
- 117 1624 South Wellington (C)
One-story, three-bay, brick-veneered bungalow with Craftsman influence, built ca. 1927. Gable-front roof with exposed rafter tails, covered with asphalt shingles. Partial-width, gable-front porch supported by brick piers. Windows are Craftsman 3/1 DHSLS, some in pairs. Entrance has a multi-light door.
- 118 1625 South Wellington (C)
One-story, three-bay, brick-veneered bungalow with Craftsman influence, built in ca. 1927. Gable-front roof with jerkinhead and exposed rafter tails, covered with asphalt shingles. Full-width, hip roofed porch supported by brick piers. Windows are 6/1 DHSLS. Entrance contains an eight-light, one-panel Craftsman door.
- Garage, ca. 1960. One-story, one-bay, frame, gable roof, weatherboard siding. (NC)
- 119 1629 South Wellington (C)
One-story, three-bay, brick-veneered bungalow with Craftsman influence, built ca. 1927. Gable-front roof with exposed rafter tails, covered with asphalt shingles. Partial-width, gable-front porch supported by brick piers. Windows covered with plywood. Entrance contains a three-light replacement door.
- 120 1630 South Wellington (C)
One-story, three-bay, brick-veneered bungalow with Craftsman influence, built ca. 1927. Gable-front roof with jerkinhead and exposed rafter tails, covered with asphalt shingles. Partial-width, gable-front porch supported by brick piers. Windows are Craftsman multi-light/1 DHSLS. Entrance contains a multi-light door.
- 121 1634 South Wellington (C)
One-story, three-bay, brick-veneered English cottage with Craftsman influence, built ca. 1927. Gable-front roof with exposed rafter tails, covered with asphalt shingles. One-bay, gable-front porch supported by brick piers, enclosed ca. 1970. Windows are 6/6 DHSLS. Entrance contains a multi-light door; an exterior chimney flanks the side of the entrance.

United States Department of the Interior
National Park Service

NATIONAL REGISTER OF HISTORIC PLACES
CONTINUATION SHEET

Section number 7 Page # 28 Shadowlawn Historic District
Memphis, Shelby County, TN
=====

- 122 1635 South Wellington (C)
One-story, four-bay, brick-veneered bungalow with Craftsman influence, built ca. 1926-27. Complex gable roof with knee brace brackets and exposed rafter tails, covered with asphalt shingles. Full-width, gable-front porch supported by brick piers. Windows are Craftsman 3/1 and 4/1 DHSLS. Entrance has a six-panel replacement door.
- 123 1639 South Wellington (C)
One-story, three-bay, brick-veneered bungalow with Craftsman influence, built ca. 1930. Gable roof with exposed rafter tails, covered with asphalt shingles. Gable and hip-roofed porch with jerkinhead, supported by wrought iron replacement posts. Windows are 6/1 DHSLS. Entrance contains a single-light replacement door.
- 124 1640 South Wellington (C)
one-story, three-bay, brick-veneered bungalow with Craftsman influence, built ca. 1926-27. Gable-front roof with jerkinhead and exposed rafter tails, covered with asphalt shingles. Full-width, hip-roofed porch supported by battered brick piers. Windows are 6/1 DHSLS. Entrance contains a multi-light door flanked by multi-light sidelights. Double-door opening to the side of the entrance enclosed ca. 1985.

Garage, ca. 1970. One-story, two-bay, concrete block and frame, hip roof, weatherboard siding. (NC)
- 125 1644 South Wellington (C)
One-and-one-half story, three-bay, brick-veneered bungalow with Craftsman influence, built ca. 1926-27. Gable-front roof with hip-roofed airplane and exposed rafter tails, covered with asphalt shingles. Full-width, gable and hip-roofed porch supported by brick piers. Windows are Craftsman 3/1 DHSLS; two have been modified to single-light fixed sashes. Entrance contains an eight-light, one-panel Craftsman door.

Garage, ca. 1960. One-story, one-bay, frame, gable-roof, Masonite siding. (C)
- 126 1645 South Wellington (C)
One-story, three-bay, brick-veneered bungalow with Craftsman influence, built ca. 1927. Gable-front roof with exposed rafter tails, covered with asphalt shingles. One-bay, gable-front porch supported by brick piers, enclosed ca. 1970. Windows are Craftsman 3/1 DHSLS. Entrance contains a single-light replacement door.

United States Department of the Interior
National Park Service

NATIONAL REGISTER OF HISTORIC PLACES
CONTINUATION SHEET

Shadowlawn Historic District
Memphis, Shelby County, TN

Section number 7 Page # 29

- =====
- 127 1649 South Wellington (C)
One-story, three-bay, brick-veneered bungalow with Craftsman influence, built ca. 1927. Gable-front roof with jerkinhead and exposed rafter tails, covered with asphalt shingles. Partial-width, gable-front with jerkinhead porch, supported by battered brick piers. Windows are Craftsman multi-light/1 DHSL, some in pairs. Entrance contains a multi-light door.
- 128 1650 South Wellington (C)
One-story, three-bay, brick-veneered bungalow with Craftsman influence, built ca. 1927. Side-gable roof with exposed rafter tails, covered with asphalt shingles. Partial-width, shed-roofed porch supported by brick piers. Windows are Craftsman 3/1 DHSL. Entrance contains a single-light replacement door.
- Garage, ca. 1927. Two-story, two-bay, frame, gable roof, weatherboard siding, Craftsman 3/1 DHSL. (C)
- 129 1654 South Wellington (C)
One-story, three-bay, brick-veneered bungalow with Craftsman influence, built ca. 1926-27. Complex gable roof with exposed rafter tails, covered with asphalt shingles. Partial-width, hip-roofed porch supported by brick piers. Windows are 6/1 DHSL, some in pairs. Entrance contains a multi-light door.
- Garage, ca. 1926-27. One-story, one-bay, frame, gable roof, weatherboard siding. (C)
- 130 1655 South Wellington (C)
One-story, three-bay, brick-veneered bungalow with Craftsman influence, built ca. 1927. Gable-front roof with exposed rafter tails, covered with asphalt shingles. Full-width, gable and hip-roofed porch supported by grouped brick piers on a raised brick pedestals, enclosed ca. 1970. Windows are 6/1 DHSL. Entrance contains a single-light replacement door.
- Garage, ca. 1927. One-story, one-bay, frame, gable roof, weatherboard siding. (C)
- 131 1659 South Wellington (C)
One-story, three-bay, brick-veneered bungalow with Craftsman influence, built ca. 1927. Gable-front roof with jerkinheads and exposed rafter tails, covered with asphalt shingles. Partial-width, gable-front porch with jerkinheads, supported by battered brick piers, enclosed in ca. 1970. Windows are Craftsman 3/1 DHSL. Entrance contains a solid replacement door.
- Garage, ca. 1927. One-story, one-bay, frame, gable roof, weatherboard siding. (C)

United States Department of the Interior
National Park Service

NATIONAL REGISTER OF HISTORIC PLACES
CONTINUATION SHEET

Section number 7 Page # 30 Shadowlawn Historic District
Memphis, Shelby County, TN
=====

- 132 1660 South Wellington (C)
One-story, three-bay, brick-veneered bungalow with Craftsman influence, built ca. 1926-27. Complex gable roof with exposed rafter tails, covered with asphalt shingles. Partial-width, undercut porch supported by brick piers. Windows are Craftsman multi-light/1 DHSL. Entrance contains a multi-light door.
- 133 1664 South Wellington (C)
One-story, three-bay, brick-veneered bungalow with Tudor and Craftsman influence, built ca. 1927. Gable-front roof with jerkinhead and exposed rafter tails, covered with asphalt shingles. Partial-width, gable-front porch with jerkinhead, supported by grouped brick piers raised on a brick pedestal. Windows are Craftsman 3/1 DHSL. Entrance contains an eight-light, single-panel Craftsman door; an exterior chimney with relieving arch flanks the entrance.

Garage, ca. 1927. One-story, one-bay, frame, gable roof, weatherboard siding. (C)
- 134 1665 South Wellington (C)
One-story, three-bay, brick-veneered bungalow with Craftsman influence, built ca. 1927. Gable-front roof with exposed rafter tails, covered with asphalt shingles. Full-width, gable and hip-roofed porch supported by brick piers. Windows are 1/1 DHSL. Entrance contains a multi-light door.
- 135 General Streetscape Characteristics
Apart from its buildings, the Shadowlawn Historic District possesses historic characteristics of both public and private landscapes which contribute to the integrity of its historical setting. The public characteristics of the streetscape are defined by the irregular grid pattern of its streets and lots. Other aspects of the historic public setting are the patterns of setbacks that define the placement of buildings, mature street trees, and original concrete sidewalks placed at the concrete curb. The private side of the historic setting includes lawn terraces (both with and without retaining walls), concrete slab driveways, and concrete walkways. Private landscape elements include mature lawn trees (varieties of oak, maple, magnolia, red gum, sycamore and others), ornamental trees and bushes (crepe myrtle, red bud, flowering locust, and others), and foundation plants (boxwoods, azaleas, hollies, and flowering plants, among others).

United States Department of the Interior
National Park Service

NATIONAL REGISTER OF HISTORIC PLACES
CONTINUATION SHEET

Section number 8 Page # 31

Shadowlawn Historic District
Memphis, Shelby County, TN

NARRATIVE STATEMENT OF SIGNIFICANCE

The Shadowlawn Historic District is being nominated under two National Register criteria for its significance in areas of community planning and development and architecture.

Under criterion A in the area of community planning and development, the district possesses significance as a rare local example of an integral planned subdivision, where residences were built by the same company that created and laid off the original lot and street pattern. Some of the structures built were done on a purely speculative basis, while others are clearly custom built for a new owner. Based upon previous National Register nominations and on the information collected by the City of Memphis Cultural Resources Survey, the Shadowlawn district is one of only a handful of pre-World War Two subdivisions in Memphis known to have been treated in this manner by one company, acting as developer and builder.

Under criterion C in the area of architecture, the district possesses significance for its well-preserved collection of early-twentieth century middle-class house types, and the architectural styles applied to them. Like other middle class housing areas in Memphis, such as the Cooper-Young Historic District (NR 6/22/89), the houses of Shadowlawn reflect an evolution in the tastes and demands of the middle-class home buyer. Both districts also exist as responses to the explosive growth of the middle class population of Memphis that began after the turn of the twentieth century and continued to the beginning of the Great Depression. However, unlike Cooper-Young, or any other district previously listed, Shadowlawn possesses a neighborhood character that is remarkable for its consistency of mass, scale, setback, setting and materials. The consistent architectural qualities of structures in the district are largely the result of the pervasive control of William C. Chandler (1885-1962), its developer and builder.

The plat for the Chandler's Shadowlawn Subdivision was approved by the Memphis City Planning Commission on April 14 of 1924, containing, in all, one hundred and sixty lots. Chandler developed speculative houses in the subdivision in phases over time, starting a new phase as the previously-built section filled up with new home owners. His market for the Shadowlawn subdivision was targeted toward the middle class, particularly the families of employees in the industrial and commercial concerns located in the general area surrounding the subdivision. Housing existing in this area at the time of the development of the Shadowlawn subdivision had been built a generation before with the first wave of industrial development in South Memphis, such as the development of the Ford assembly plant in 1924 at South Parkway and Riverside Drive. The break-up of the Kerr landholdings in South Memphis in the early 1920s

United States Department of the Interior
National Park Service

NATIONAL REGISTER OF HISTORIC PLACES
CONTINUATION SHEET

Section number 8 Page # 32 Shadowlawn Historic District
Memphis, Shelby County, TN

=====

opened new areas for residential and industrial development. Chandler was able to meet the demand of the growing work force in this area of Memphis by offering homes with amenities that appealed to the new middle class, like "hardwood floors, built-in cabinets, garage and driveway" (Commercial Appeal, September 12, 1926). The \$6,000.00 price tag for the majority of the houses in the neighborhood was in reach for most of the middle class.

The pattern of development in the subdivision is revealed by city directory listings for the 1920s. The 1926 city directory shows that there were but sixteen occupied residences in the neighborhood; there were no "vacant" residences noted that were awaiting occupation. Most of the occupied properties were located in the first blocks of South Wellington and Shadowlawn immediately south of South Parkway. By 1928, however, there were fifty-six occupied dwellings, and twenty-nine developed dwellings noted as "vacant". On Wellington, the pattern of development had stretched three blocks to the south nearly to the southern edge of the district (though there were still undeveloped lots lying between ones improved with houses); the majority of two blocks of Shadowlawn had also been developed. The South Parkway frontage of the district was nearing full-development by 1928, and was completely built-out by 1932 (Polk 1926, 1928, 1932).

The effects of the Great Depression are indicated by the drop-off in speculative development by Chandler in Shadowlawn. Although one hundred and two of the district's 134 properties had been built by 1932, only ten properties were vacant, as indicated by directory sources. Of these ten, six of these homes were in existence in 1928, leaving only four "new", speculative properties available for purchase (Polk 1932). As indicated by the inventory data, only thirty-four additional properties were built in the district between 1932 and the end of World War Two.

During the Depression years, Chandler chose not to open up the final, undeveloped phase of the subdivision, concentrating instead on focusing the development of new houses on lots previously left vacant. For this reason, the southernmost portion of the original subdivision, that of Shadowlawn Boulevard between Essex and Person streets, was not opened for development until ca. 1950. This last, non-historic phase of the original Shadowlawn subdivision is not included within the boundaries of this proposed district.

William Chandler's intent for the Shadowlawn subdivision was to appeal to the middle class worker of South Memphis, and it would appear that the rapid sale of his speculatively-developed houses proved his assumption correct. A random sampling of the occupations of residents in 1928 and 1932 confirms that the neighborhood appealed to the working middle class, including clerks, mechanics, carpenters, cashiers, office managers and factory workers. However, the same sample also reveals that the

United States Department of the Interior
National Park Service

NATIONAL REGISTER OF HISTORIC PLACES
CONTINUATION SHEET

Section number 8 Page # 33

Shadowlawn Historic District
Memphis, Shelby County, TN

subdivision had a particular appeal to railroad workers, particularly those employed by the Illinois Central Railroad. Of the twenty one residents sampled, twelve were employed in railroad-related professions, including engineers, conductors and electricians (Polk 1928, 1932). The proximity of the Illinois Central's main switching yards nearby the district likely added great appeal for railroad employees in purchasing homes in Shadowlawn.

The housing developed in Shadowlawn by William C. Chandler was solidly-based in the needs of the middle-class market during the 1920s. By the time that the Shadowlawn subdivision opened in 1924-25, the bungalow was firmly entrenched as the home of preference for the expanding middle class, though the small English cottage was growing as an attractive alternative. The survey of the district revealed that there are clearly several different groups of houses which share common house plans, which can be expected in speculatively-developed subdivisions. Unfortunately, the time and budget available for the preparation of this nomination did not permit an actual accounting of the different patterns and the number of each pattern built. Even though some houses in Shadowlawn may share a particular house plan in common, their outward appearances are not identical-- each is provided with individual treatments of their detailing (differences in window sash configuration, porch posts, door style, gable end treatment, etc.) to mask their common plan. Unfortunately, the origin of Chandler's "stock" plans is not known.

There are also a number of houses within the Shadowlawn district which share no common plan with any other structure in the neighborhood. Again, time and budget did not permit an actual accounting of these individually-treated structures, and whether or not Chandler built them all. However, the fact that there are "unique" variations of bungalows, English cottages, Capes, etc. shows that not all of Chandler's houses in Shadowlawn were built for speculative purchase by a future home buyer. Instead, it appears that at least some of these houses were custom developed to appeal to the tastes of a specific home buyer, perhaps with Chandler serving only as general contractor in seeing the house built to completion.

Shadowlawn was not the first nor last of the housing subdivisions developed by William C. Chandler. Chandler began his career in real estate development ca. 1912 and continued active until the late 1950s (his company, the Chandler and Chandler Real Estate Company, is still run by his descendants today). Chandler began by constructing individual homes, and later touted a particular style of bungalow as the so-called "Built-Rite" home. Though little more than a marketing ploy on his part, Chandler's bungalows catered to the demands of the middle class and the popularity of the bungalow. Rather than a specific plan or design, the

United States Department of the Interior
National Park Service

NATIONAL REGISTER OF HISTORIC PLACES
CONTINUATION SHEET

Section number 8 Page # 34 Shadowlawn Historic District
Memphis, Shelby County, TN

=====
"Built-Rite" bungalow was, instead, more of a package of elements that could be purchased at an affordable cost. Chandler packaged the "Built-Rite" bungalow as a brick-veneered house with many amenities as standard elements, steam heat, built-in cabinets, hardwood floors among them, all for a price within the budget of the middle class. A garage and a concrete driveway were standard site improvements for each house (Johnson 1994:2-5). The houses of Shadowlawn do not appear to have been marketed specifically as "Built-Rite" houses, but do meet these general standards.

Among Chandler's earlier projects were smaller-scale developments like the Cummings Subdivision of 1917, a thirty-two houses on Azalia Street, and twenty-two bungalows on Forrest Avenue in 1920. The Shadowlawn subdivision was, by contrast, Chandler's truly first large-scale development project, and while there are bungalows which Chandler may have sold as "Built-Rite" properties, it was in Shadowlawn that Chandler first experimented with house forms other than the Craftsman bungalow. Another notable pre-World War Two project of Chandler's was the Prescott Circle Subdivision in the area of Carnes and Prescott streets, which Chandler developed beginning in 1938. In this development, Chandler retained the services of the noted local architect, J. Frazier Smith, to design the subdivision plan and to develop stock plans for the Minimal Traditional-styled houses built there (Johnson 1994:4).

In conclusion, the Shadowlawn is an unusual and well-preserved example of a suburb from the 1920s and 1930s, which retains good examples of Craftsman bungalows, English cottages, Capes and other forms of middle class housing stock. Its history of development as a largely speculative subdivision, apparently built entirely under the direction and guidance of William Cullen Chandler, provides the district with a rare sense of architectural continuity, and diversity that is worthy of National Register recognition.

United States Department of the Interior
National Park Service

NATIONAL REGISTER OF HISTORIC PLACES
CONTINUATION SHEET

Section number 9 Page # 35 Shadowlawn Historic District
Memphis, Shelby County, TN

=====

MAJOR BIBLIOGRAPHIC REFERENCES

Johnson, Judith

1994 "Coverform: Chandler's Subdivisions". Overview history of the known subdivision developments of William Cullen Chandler, prepared to accompany the City of Memphis Cultural Resource Survey, completed by Memphis Heritage, Inc. Unpublished MS, Memphis Heritage, Inc. and the Tennessee Historical Commission.

Memphis Commercial Appeal

April 26, 1925; September 12, 1926; July 6, 1962.

Polk, R. L., publishers

Memphis City Directories for 1926, 1928, and 1932.

Shelby County, Office of the County Register

Plat Book 8, page 166. Plat of "Chandler's Shadowlawn Subd. of Lots 47 & 48, Andrew Kerr Tract. April 14, 1924".

United States Department of the Interior
National Park Service

NATIONAL REGISTER OF HISTORIC PLACES
CONTINUATION SHEET

Section number 10 Page # 36

Shadowlawn Historic District
Memphis, Shelby County, TN

=====

VERBAL BOUNDARY DESCRIPTION

The property in nomination includes properties facing South Parkway, South Wellington Street and Shadowlawn Boulevard within the Shadowlawn Subdivision of Memphis, as delineated in heavy black line on the attached Shelby County Property Tax Maps K-7 and JK-7.

BOUNDARY JUSTIFICATION

The property in nomination encompasses the largest portion of the Shadowlawn Subdivision which contains properties built prior to 1945, within its period of historic significance.

United States Department of the Interior
National Park Service

NATIONAL REGISTER OF HISTORIC PLACES
CONTINUATION SHEET

Shadowlawn Historic District
Memphis, Shelby County, TN

Section number Photos Page # 37

=====

SHADOWLAWN HISTORIC DISTRICT

Memphis, Shelby County, TN

Photos by: Marsha R. Oates

Date: January, 1995

Negs: Tennessee Historical Commission

Photo 1 of 12

View of one of the two pairs of entrance gates to the Shadowlawn subdivision, this pair at South Wellington and South Parkway, looking north.

Photo 2 of 12

Close-up view of the gate posts.

Photo 3 of 12

View of the east side of South Wellington Street, looking generally south east from 1492 South Wellington.

Photo 4 of 12

View of 1510 South Wellington, facing east.

Photo 5 of 12

View of 1519 South Wellington, looking generally southwest.

Photo 6 of 12

View of 1515 South Wellington, looking west.

Photo 7 of 12

View of 1560 South Wellington, looking generally east.

Photo 8 of 12

View of 1564 South Wellington, looking generally east.

Photo 9 of 12

View of the east side of South Wellington Street, looking generally southeast from 1614 South Wellington.

Photo 10 of 12

View of 1664 South Wellington, looking east.

Photo 11 of 12

View of the west side of Shadowlawn Boulevard, looking generally northwest from 1593 Shadowlawn.

Photo 12 of 12

View of 1550 Shadowlawn, looking generally east.

**United States Department of the Interior
National Park Service**

**NATIONAL REGISTER OF HISTORIC PLACES
CONTINUATION SHEET**

Shadowlawn Historic District
Memphis, Shelby County, TN

Section number Photos Page # 38

=====

Additional Photographs

SHADOWLAWN HISTORIC DISTRICT
Memphis, Shelby County, TN
Photos by: Marsha R. Oates
Date: March, 1995
Negs: Tennessee Historical Commission

Photo 13 of 22
View of the west side of Shadowlawn Boulevard, looking southwest from 1559 Shadowlawn.

Photo 14 of 22
View of 1526 Shadowlawn Boulevard, looking generally northeast.

Photo 15 of 22
View of 1515 Shadowlawn Boulevard, looking generally west.

Photo 16 of 22
View of 1505 Shadowlawn Boulevard, looking generally west.

Photo 17 of 22
View of 1496 Shadowlawn Boulevard, looking generally east.

Photo 18 of 22
View of the west side of Shadowlawn Boulevard, looking generally southwest from 1485 Shadowlawn.

Photo 19 of 22
View of the south side of South Parkway, looking generally southwest from 505 South Parkway.

Photo 20 of 22
View of the south side of South Parkway, looking generally southwest from 491 South Parkway.

Photo 21 of 22
View of the south side of South Parkway, looking generally southwest from 451 South Parkway.

Photo 22 of 22
View of the south side of South Parkway, looking generally southwest from 411 South Parkway.

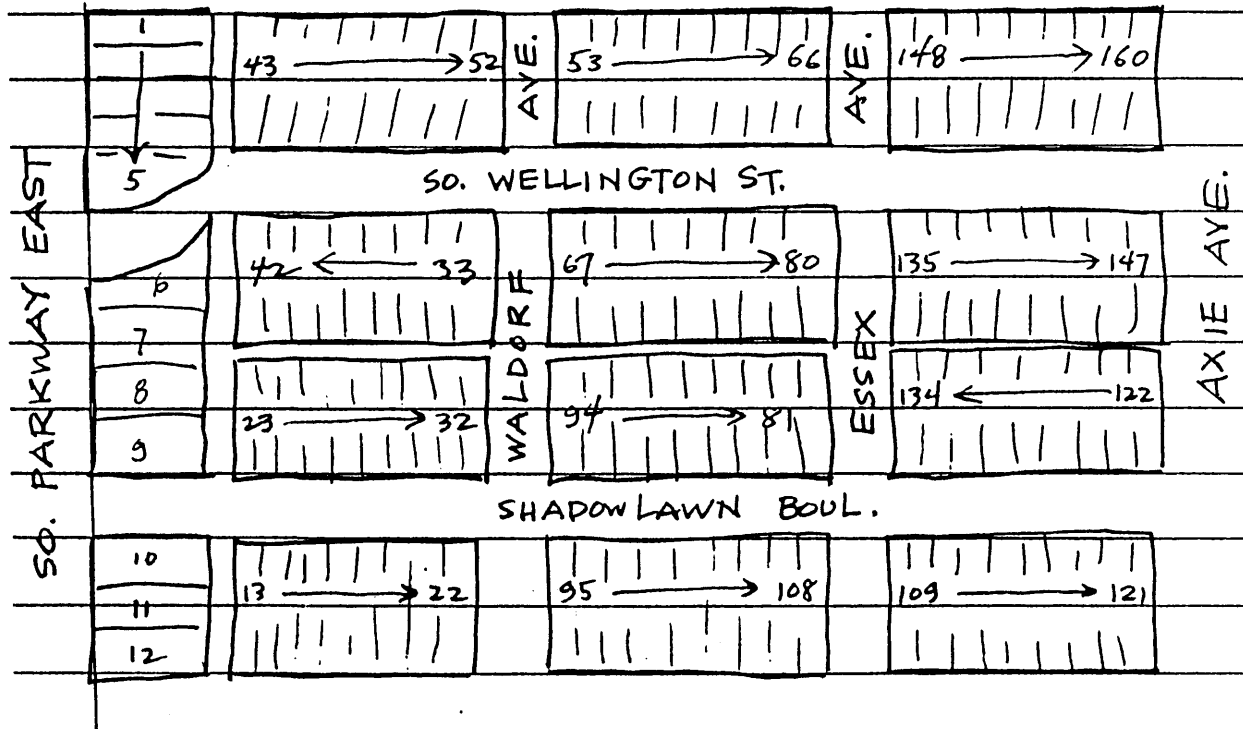
United States Department of the Interior
National Park Service

NATIONAL REGISTER OF HISTORIC PLACES
CONTINUATION SHEET

Shadowlawn Historic District
Memphis, Shelby County, TN

Section number Page # 39

Map of "Chandler's Shadowlawn Subdivision of Lots 47 & 48, Andrew Kerr Tract", approved by the Memphis City Planning Commission April 14, 1924, the original of which is contained in Plat Book 8 on page 166.



Note: "Axie Avenue", identified on the subdivision plat at its extreme southern boundary, was renamed "East Person Street" when the street was extended through this area in ca. 1950.

Copy made by: Mark Harrison, Historic Property Surveyor, Memphis Heritage, Inc., for the City of Memphis Cultural Resources Survey, October 5, 1993.

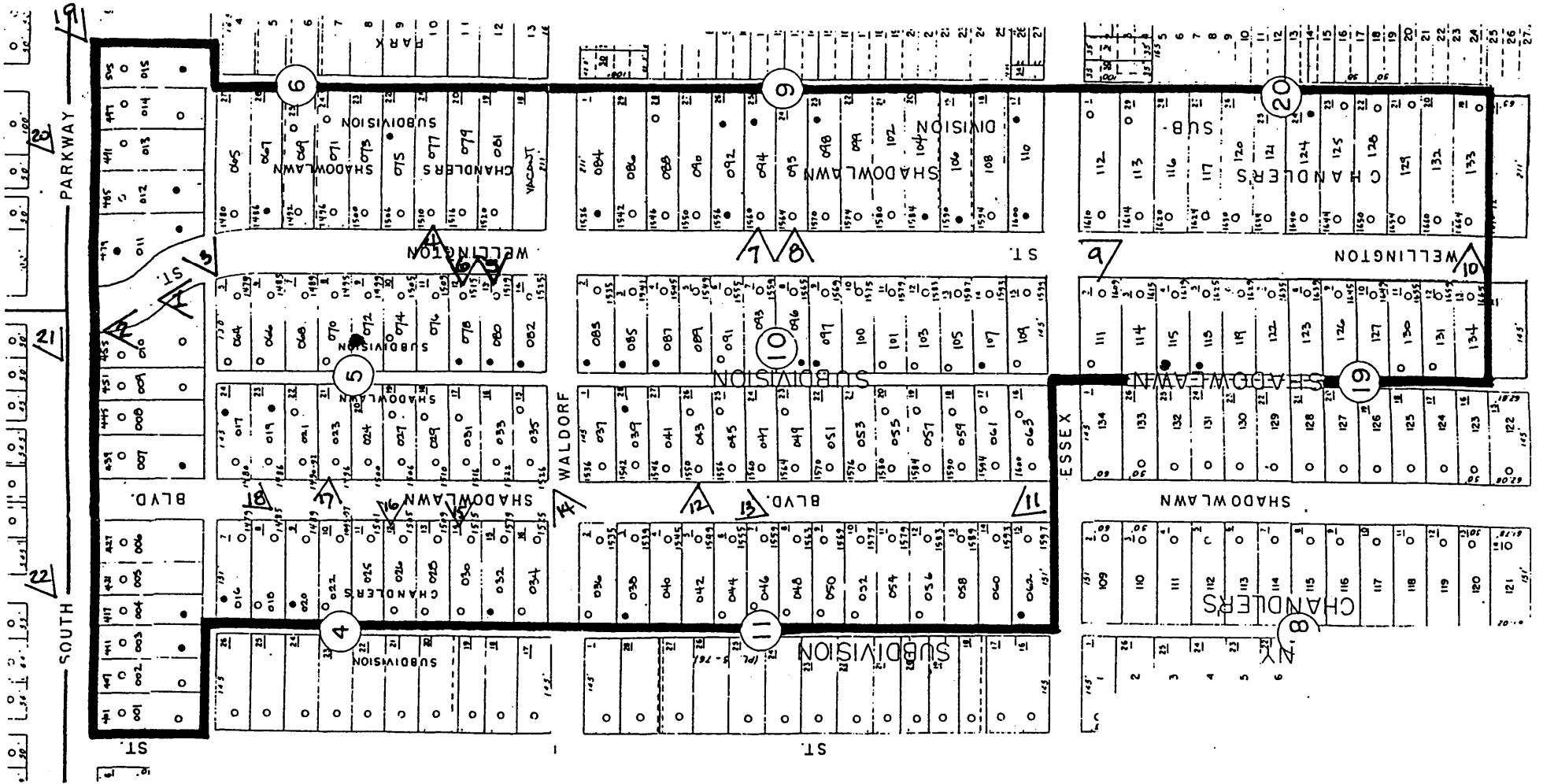


Shadowlawn Historic District

Memphis, Shelby County, TN

- contributing building
- non-contributing building
(includes primary buildings and outbuildings)

▲ N
 — District boundary
 Scale: 1" - 200' (±)

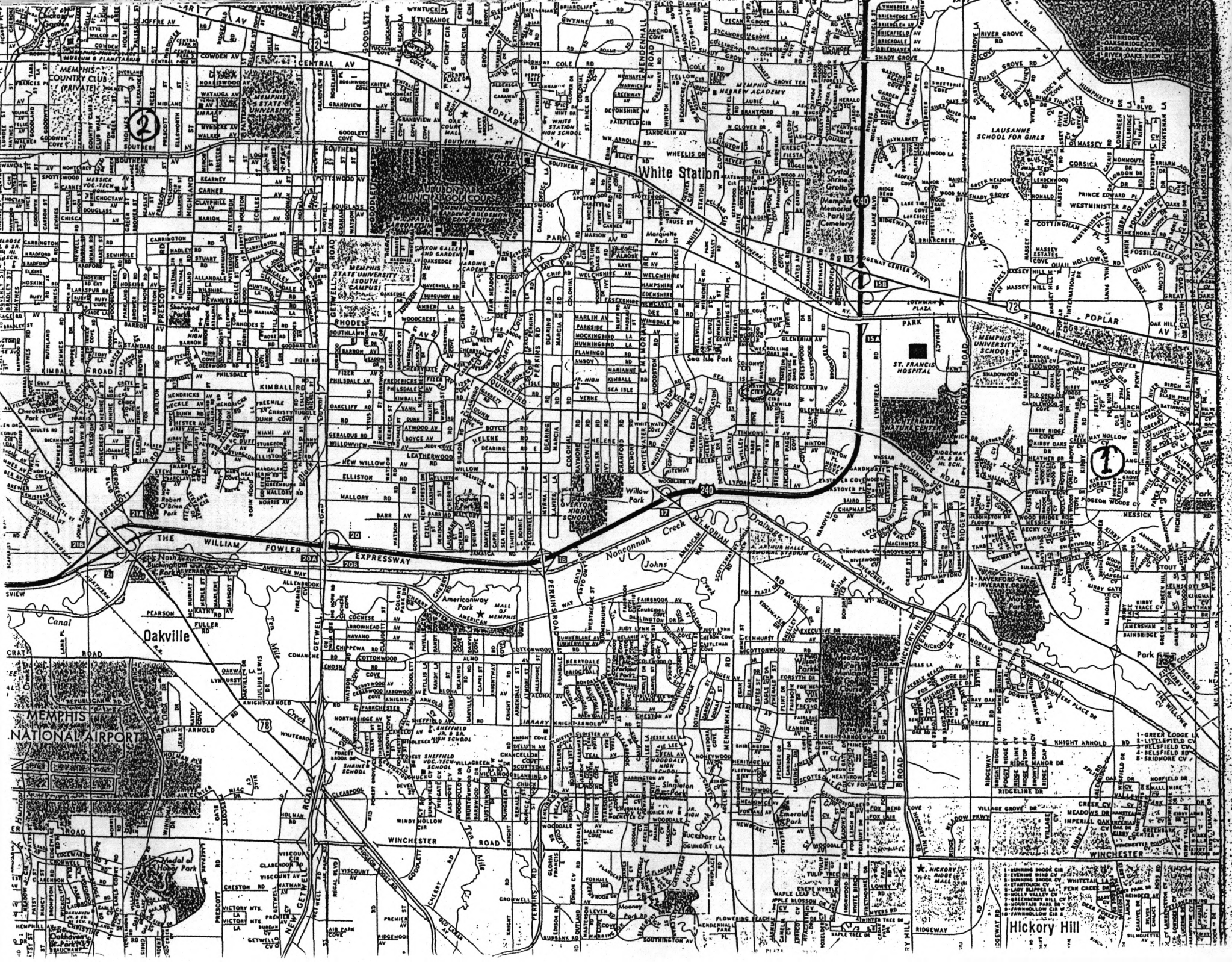


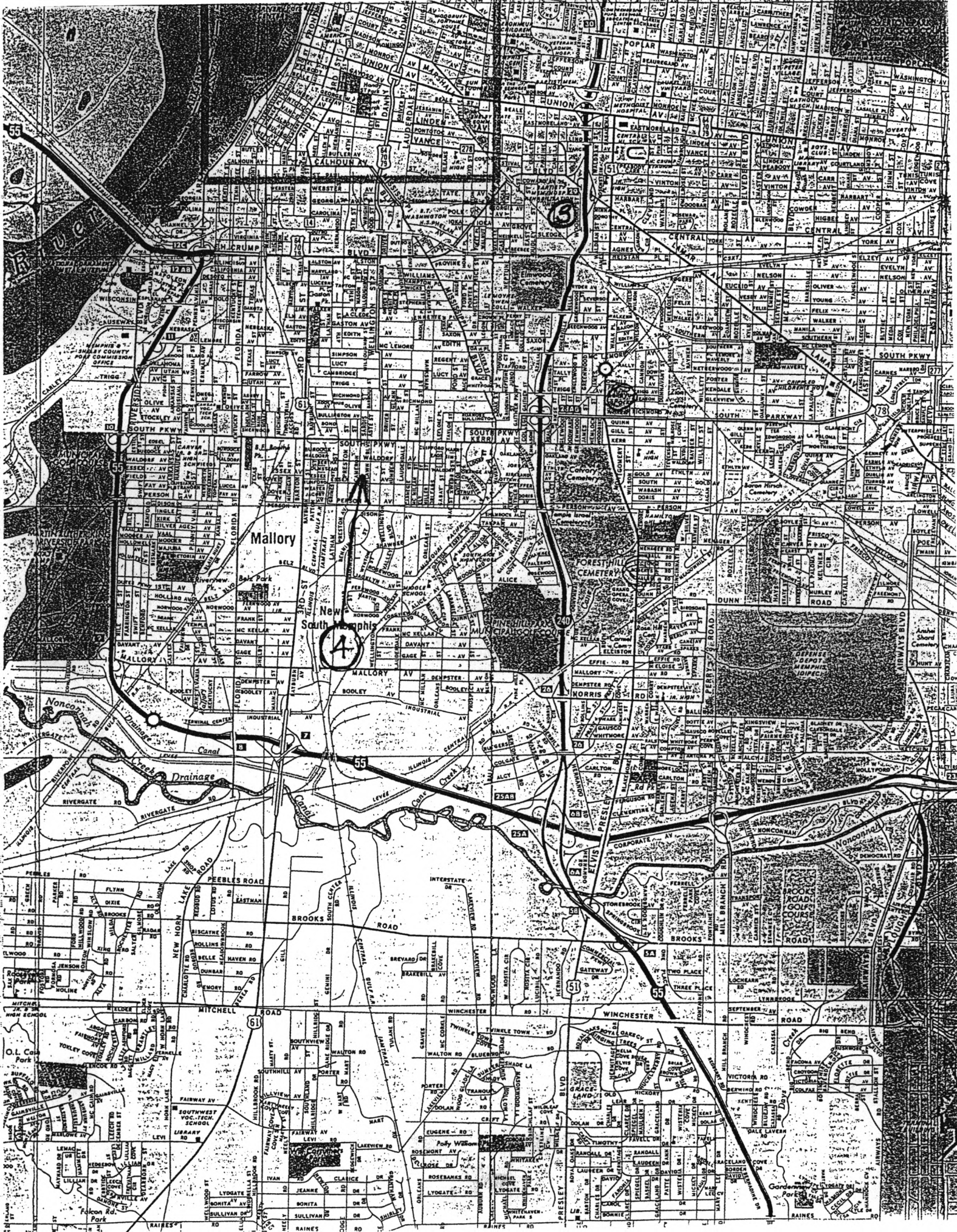
Shadowlawn Historic District

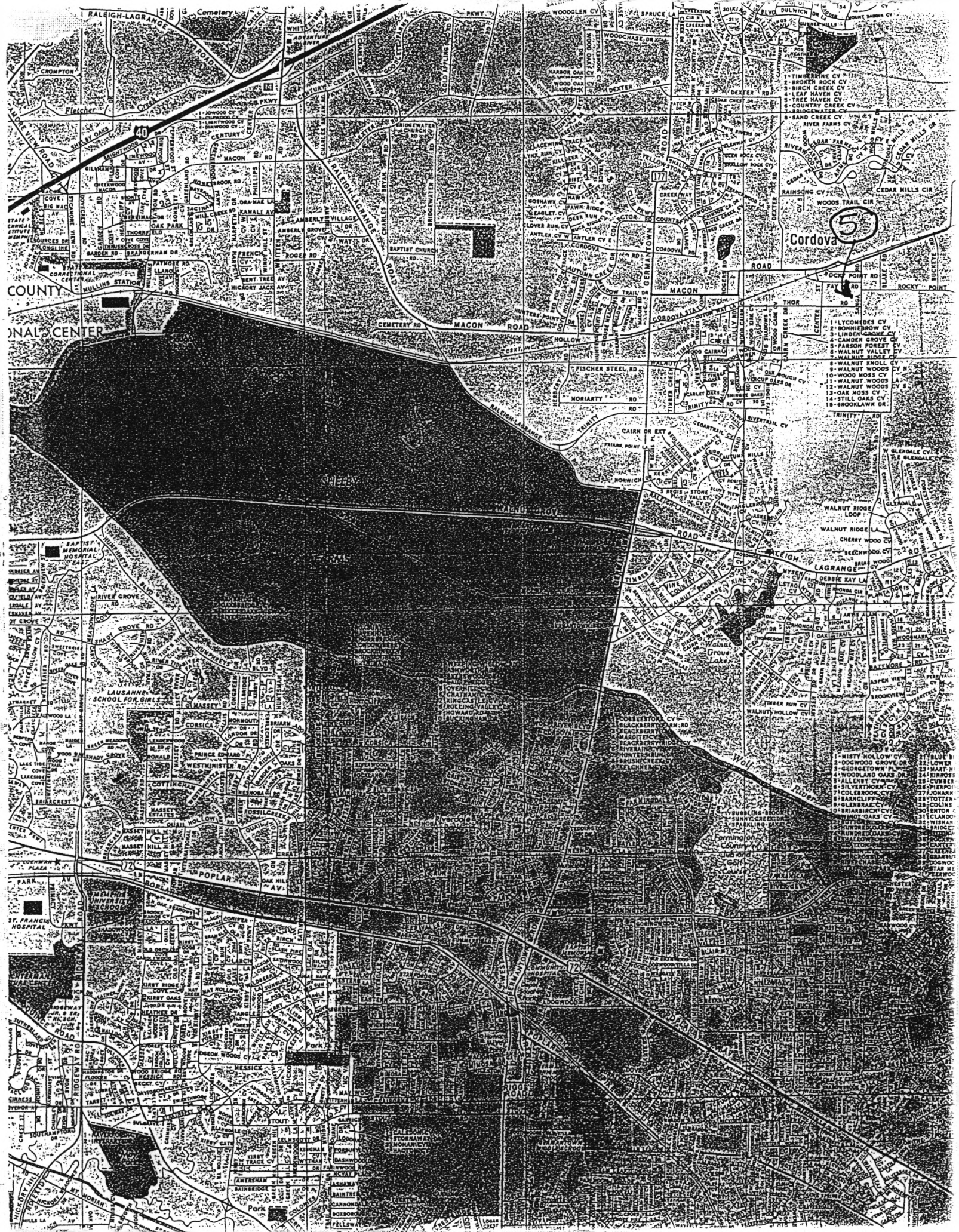
Memphis, Shelby County, TN

- ◀ photograph location
- contributing building
- non-contributing building (includes primary buildings and outbuildings)

▲ N
 — District boundary
 Scale: 1" - 200' (±)







Map showing street names and landmarks. Key streets include RALEIGH-LAGRANGE, CENTURY, MORGAN, and MORGAN. Landmarks include BAPTIST CHURCH, BAPTIST HOSPITAL, and ST. FRANCIS HOSPITAL. A large dark area is visible in the lower-left quadrant.

Cordova 5

- 1- WOODMERE CV
- 2- BROKEN CREEK CV
- 3- BIRCH ROCK CV
- 4- LEAF HAVEN CV
- 5- TREE HAVEN CV
- 6- COUNTRY CREEK CV
- 7- SAND CREEK CV
- 8- RIVER PAGES CV
- 9- BRIDGEWATER CV
- 10- CEDAR HILLS DR
- 11- WOODS TRAIL CIR
- 12- RAINING CV
- 13- ROCKY POINT RD
- 14- ROCKY POINT
- 15- BUCKLEY
- 16- WALNUT KNOLL CV
- 17- WALNUT WOODS CV
- 18- WALNUT WOODS LA
- 19- WALNUT WOODS CV
- 20- OAK MOSS CV
- 21- OAK MOSS CV
- 22- OAK MOSS CV
- 23- BROOKLAWN DR
- 24- TRINITY RD
- 25- WOODMERE CV
- 26- BLENDALE CV
- 27- BLENDALE CV
- 28- WALNUT RIDGE LOOP
- 29- WALNUT RIDGE LA
- 30- CHERRY WOOD CV
- 31- BEECHWOOD CV
- 32- BRAD WOOD
- 33- BRAD WOOD
- 34- BRAD WOOD
- 35- BRAD WOOD
- 36- BRAD WOOD
- 37- BRAD WOOD
- 38- BRAD WOOD
- 39- BRAD WOOD
- 40- BRAD WOOD
- 41- BRAD WOOD
- 42- BRAD WOOD
- 43- BRAD WOOD
- 44- BRAD WOOD
- 45- BRAD WOOD
- 46- BRAD WOOD
- 47- BRAD WOOD
- 48- BRAD WOOD
- 49- BRAD WOOD
- 50- BRAD WOOD