



#H-11

PORTLAND EASTSIDE MPS

MULTNOMAH COUNTY, OREGON

Historic view, Bagdad Theatre, Plld. Jan. 1928

3708-3726 SE HAWTHORNE BOULEVARD

This photoprint is issued for reference use only. It is not to be copied for resale.

1 OF 5

Permission for use in a publication, film or video production must be requested in writing from the Photographs Librarian,

Photographs Department

Oregon Historical Society

1230 SW Park Avenue

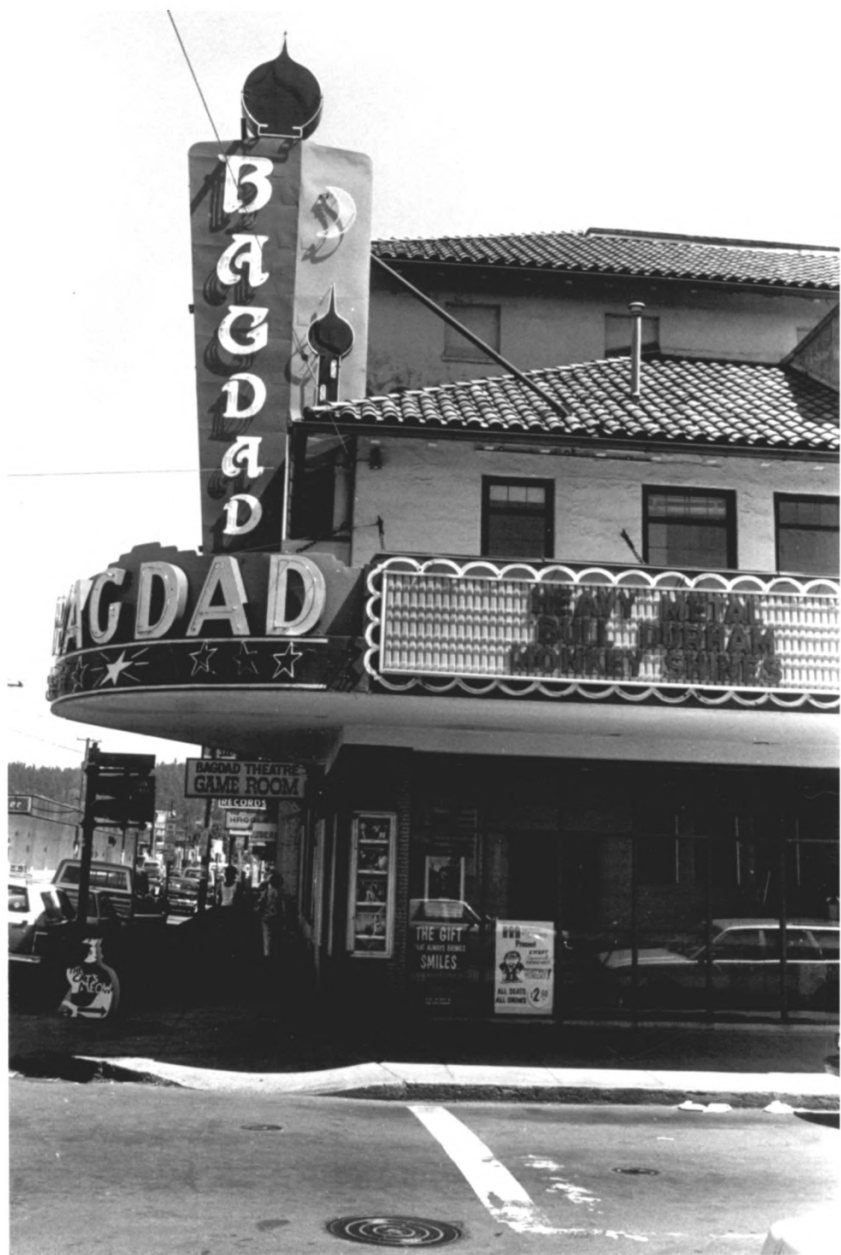
Portland, Oregon 97205

NEGATIVE NUMBER OH 45753

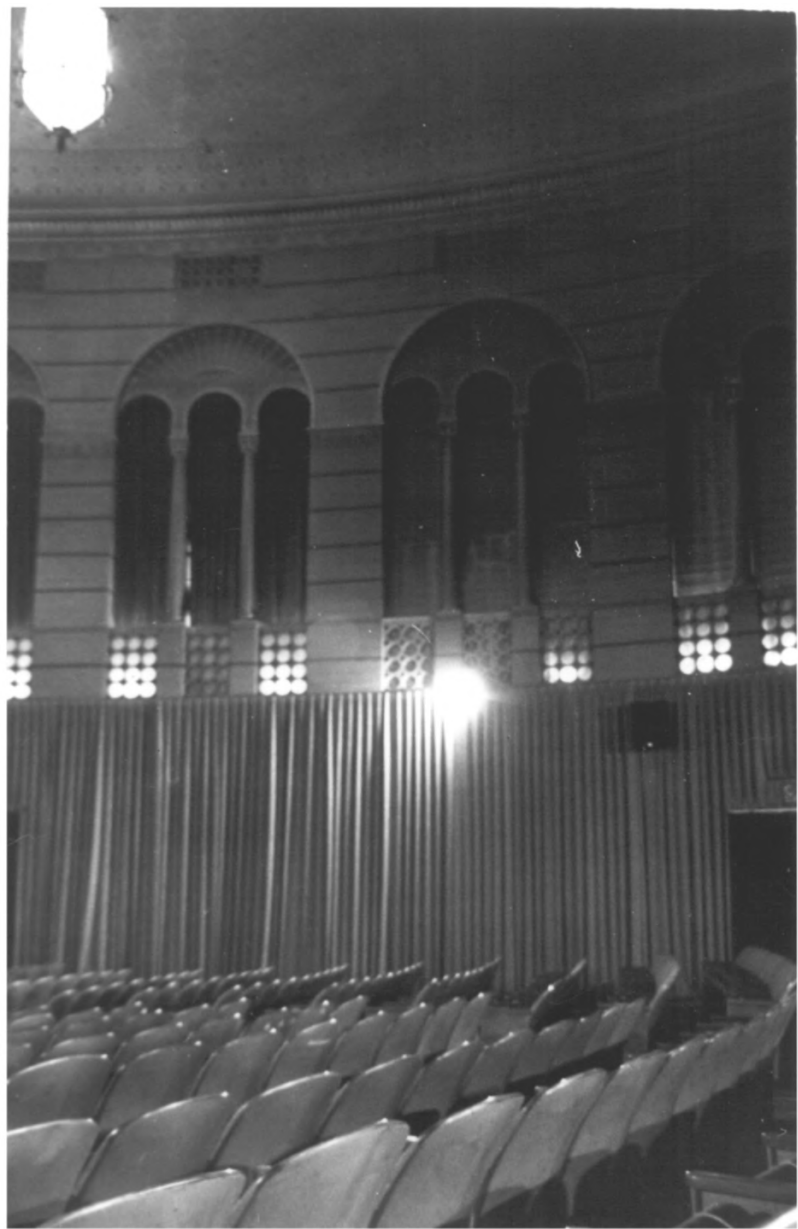
File # 1861



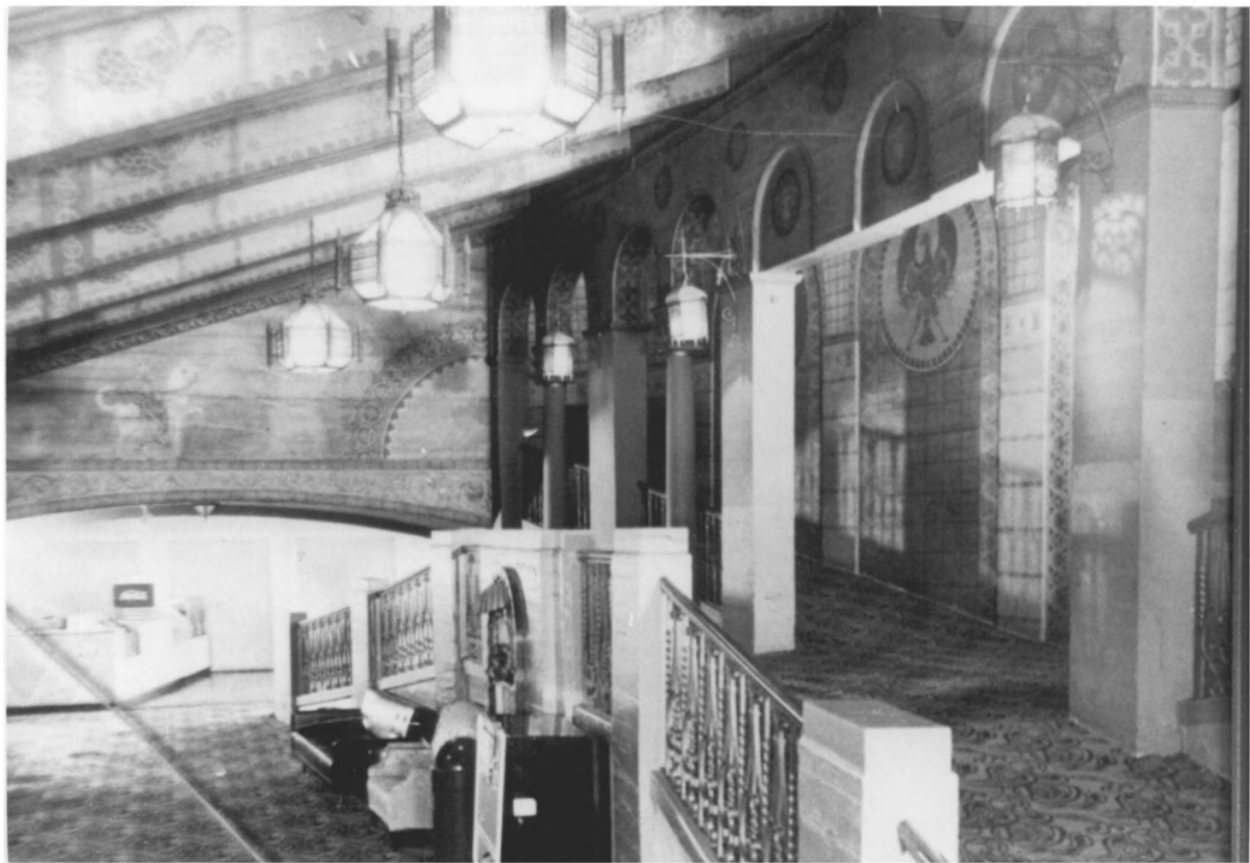
- 1 Bagdad Theater / 3708-26 S.E. Hawthorne
- 2 Portland, Oregon, Multnomah County
- 3 Smith, Patrick
- 4 August 1988
- 5 Roll S-23 # 30
- 6 Looking southeast at north and west elevations
- 7 # 2 OF 5



- 1 Bagdad Theater / 3708-26 S.E. Hawthorne
- 2 Portland, Oregon, Multnomah County
- 3 Smith, Patricia
- 4 August 1988
- 5 Roll 5-23 # 33
- 6 Close-up: Looking east at theater's
main entrance
- 7 # 3 of 5



- 1 Bagdad Theater / 3708 - 26 S.E. Hawthorne
- 2 Portland, Oregon, Multnomah County
- 3 Morrison, Jane
- 4 July 1988
- 5 Roll J-3 # 15
- 6 Interior of main theater
- 7 # 4 of 5



- 1 Bagdad Theater / 3708-26 S.E. Hawthorne
- 2 Portland, Oregon, Multnomah County
- 3 Morrison, Jane
- 4 July 1988
- 5 Roll J-3 # 19
- 6 Interior view of lobby
- 7 # 5 OF 5