



FLANDRAU STATE PARK - ENTRANCE PORTALS
BROWN CO., MN
OBJECT #1 PHOTO I. D. 09399#11

Entrance Portals

Flandrau State Park

New Ulm, MN

Rolf T. Anderson

11/87

MN Historical Society

AV Dept

690 Cedar

St Paul MN 55101

South

#1



FLANDRAU STATE PARK - BATH HOUSE
BROWN CO., MN
BLDG # 3 PHOTO I.D. 09399# 25

Bath House

Flandrau State Park

New Ulm, MN

Rolf T. Anderson

11/87

MN Historical Society

A.V. Dept

690 Cedar

St Paul MN 55101

North

#3



FLANDRAU STATE PARK - BATH HOUSE
BROWN CO., MN
BLDG # 3, PHOTO I.D. 09118 # 11

Bath House

Flandrau State Park

New Ulm MN

Rolf T. Anderson

11187

MN Historical Society

690 Cedar St (A.V. Dept.)

St Paul MN 55101

Northwest

#3



FLANDRAU STATE PARK - BATH HOUSE
BROWN CO., MN
BLDG # 3 PHOTO I.D. 09399 #22

Bath House

Flandrau State Park

New Ulm MN

Rolf T. Anderson

11/87

MN Historical Society

AV Dept

690 Cedar

St Paul MN 55101

South

#3



FLANDRAU STATE PARK - BATH HOUSE
BROWN CO. MN
BLDG #3 PHOTO I.D. 09399 #24

Bath House

Flandrau State Park

New Ulm, MN

Rolf T. Anderson

11/87

MN Historical Society

AV Dept

690 Cedar

St Paul MN 55101

West

#3



FLANDRAU STATE PARK
BROWN CO. MN
BLDG # 4' PHOTO I.D. 09399#21 (NON-CONTRIBUTING)

Pool Maintenance Bldg (non-contributing)

Flandrau State Park

New Ulm MN

Rolf T. Anderson

11/87

MN Historical Society

AV Dept

690 Cedar

St Paul MN 55101

West

#4



FLAN DRAU STATE PARK - DRINKING FOUNT.
BROWN CO., MN
OBJECT# 5 PHOTO I.D. 09118#5

Drinking Fountain

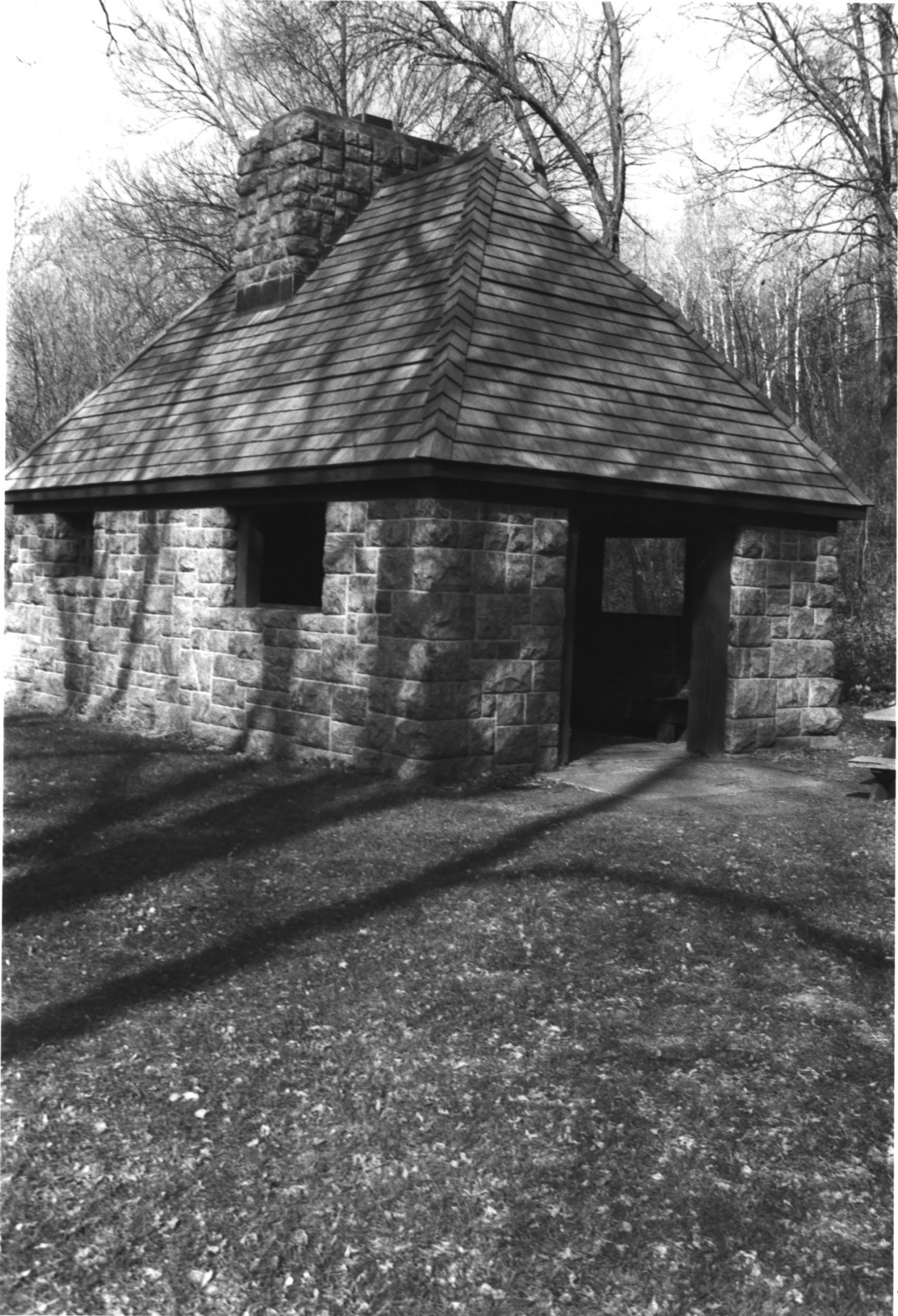
Flandrau State Park
New Ulm, MN

Rolf T. Anderson

11/87

MN Historical Society
690 Cedar (A.V. Dept.)
St Paul MN 55101
North

#5



FLANPRAU STATE PARK - KITCHEN/SHELTER
BROWN CO. MN
BLDG #8, PHOTO I.D. 09118 #8

Kitchen / Shelter

Flondrau State Park

New Ulm, MN

Rolf T. Anderson

11/87

MN Historical Society

690 Cedar (A.V. Dept)

St Paul MN 55101

Northwest

#8



FLANDRAU STATE PARK - CUSTODIAN'S RESIDENCE
BROWN COUNTY, MN
BLDG # 9 PHOTO I.D. 09399 #17

Custodian's Residence
Flandrau State Park
New Ulm, MN

Rolf T. Anderson

11/87

MN Historical Society

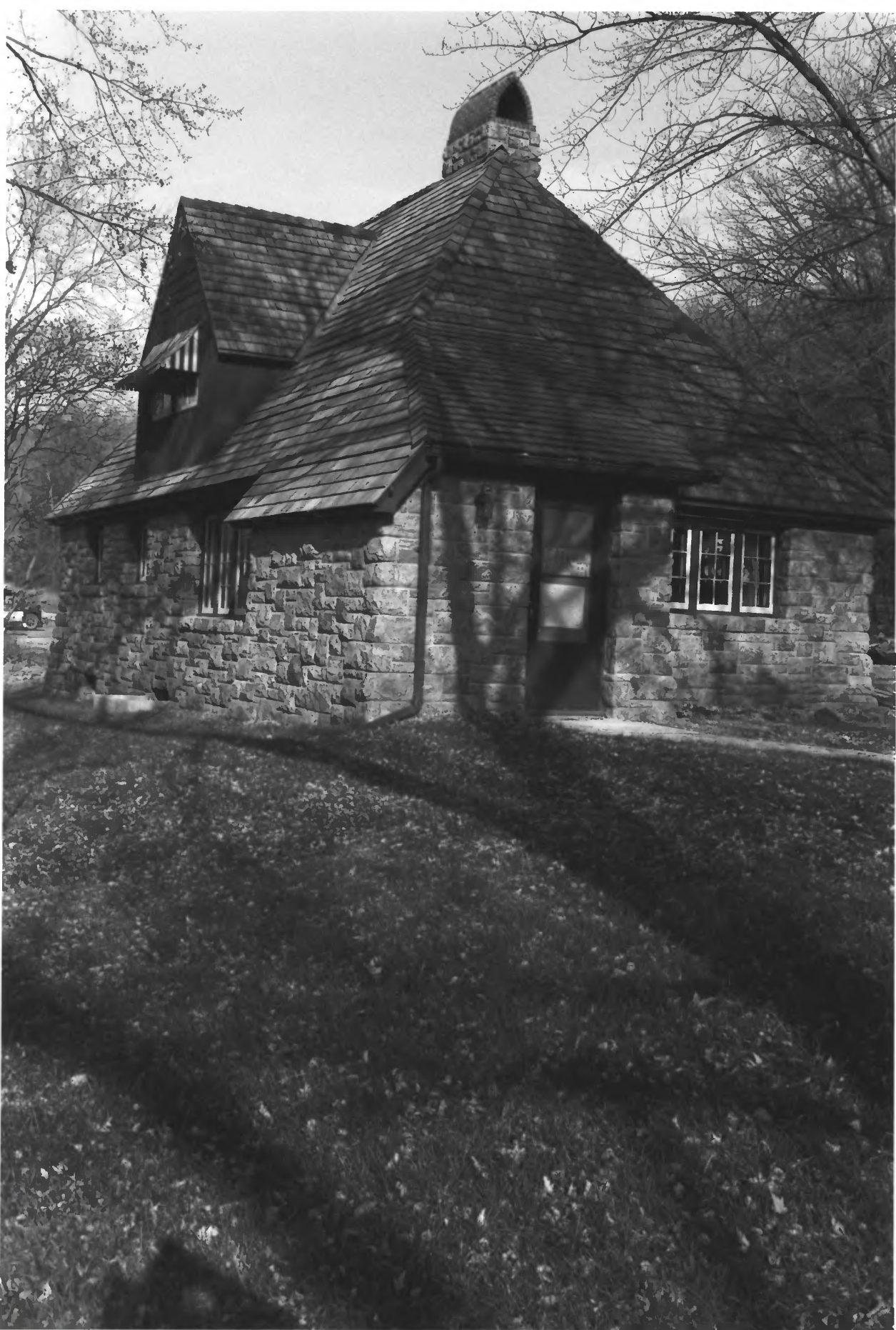
AV Dept

690 Cedar

St Paul MN 55101

Southwest

#9



FLANDRAU STATE PARK - CUSTODIAN'S RESIDENCE
BROWN CO., MN
BLDG. # 9 PHOTO I.D. 09399 #16

Custodian's Residence
Flandrau State Park
New Ulm MN

Rolf T. Anderson

11/87

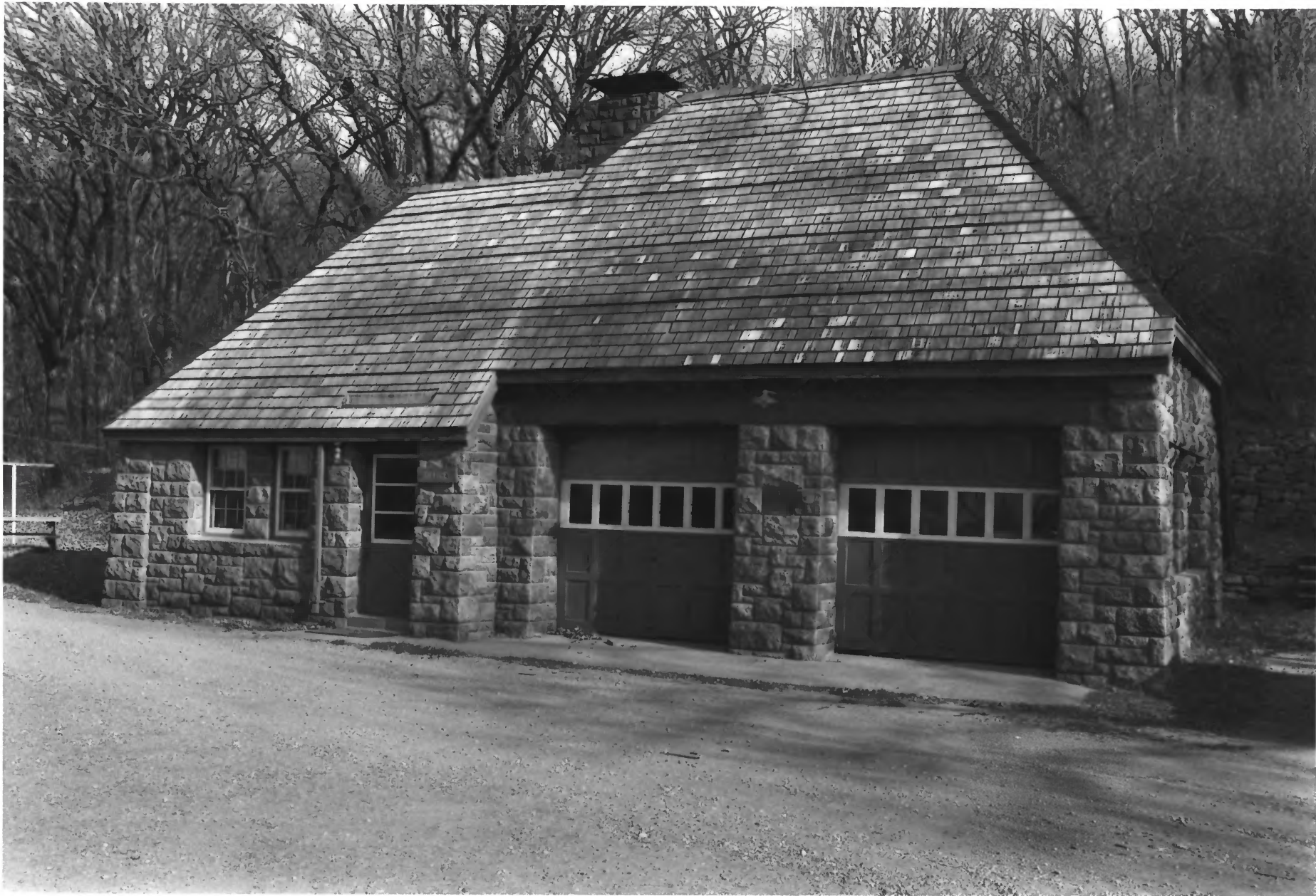
MN Historical Society
A.V. Dept

690 Cedar

St Paul MN 55101

West

#9



FLANDRAU STATE PARK - GARAGE/WORKSHOP
BROWN CO., MN
BLDG # 10 PHOTO I.D. 09399#12

Garage / Shop

Flandrau State Park

New Ulm, MN

Rolf T. Anderson

11/87

MN Historical Society

AV Dept

690 Cedar

St Paul MN 55101

North

#10



FLANDRAU STATE PARK - RESIDENCE, SHOP, GARAGE (L to R)
BROWN CO. MN
BLDGs # 9, 12 + 10 PHOTO I.D. 09399#19

Service Yard
Flandrau State Park
New Ulm MN

Rolf T. Anderson

11/87

MN Historical Society

AV Dept

690 Cedar

St Paul MN 55101

West

9, 10, 12



FLANDRAU STATE PARK - RETAINING WALL
BROWN CO., MN
STRUCTURE #11 PHOTO I.D. 09399 #14

Retaining Wall

Flandrau State Park

New Ulm, MN

Rolf T. Anderson

11/87

MN Historical Society

AV Dept

690 Cedar

St Paul MN 55101

North

#11



FLANDRAU STATE PARK - WPA CAMP
BROWN CO., MN
BLDG # 15 PHOTO I.D. 09118 #16

Barracks / WPA Camp

Flandrau State Park

New Ulm, MN

Rolf T. Anderson

11/87

MN Historical Society

690 Cedar (A.V. Dept.)

St Paul MN 55101

Northeast

#15



FLANDRAU STATE PARK - WPA CAMP
BROWN CO., MN
BLDG. #15; 17 PHOTO I.D. 09118 #23

WPA Camp

Flandrau State Park

New Ulm, MN

Rolf T. Anderson

11/87

MN Historical Society

690 Cedar (A.V. Dept)

St Paul MN 55101

Northwest

#15, #17 (foreground)



FLANDRAU STATE PARK - OFFICE / WPA CAMP
BROWN CO., MN
BLDG # 17 PHOTO I.D. 09118 # 14

Office / WPA camp
Flandrau State Park
New Ulm, MN

Rolf T. Anderson

11/87

MN Historical Society
690 Cedar (A.V. Dept.)
St Paul MN 55101
West

#17



FLANDRAU STATE PARK - MESS HALL
BROWN CO., MN
STRUCTURE # 21 PHOTO I.D. 09118 # 21 (NON-CONTRIBUTING)

Mess Hall (non-contributing)

Flandrau State Park
New Ulm, MN

Roy T. Anderson
11/87

MN Historical Society

690 Cedar St (A.V. Dept)
St Paul MN 55101

Northwest

291



FLANDRAU STATE PARK - DAM
BROWN CO., MN
STRUCTURE # 22 PHOTO I.D. 09118# 24 (NON-CONTRIBUTING)

Dam (non-contributing)

Flandrau State Park

New Ulm MN

Rolf T. Anderson

11187

MN Historical Society

690 Cedar (A.V. Dept.)

St Paul MN 55101

Southwest

#21