

J.R. Watkins Medical Company Complex

Winona, MN; Winona County

Photographer: unknown

ca. 1910

Minnesota Historical Society, 690

Cedar St., St. Paul, MN 55101

East

43315

J. R. WATKINS MEDICAL CO.



J.R. Watkins Medical Company Complex
(Bldg. 1 - Administration Building
entrance)

Winona, MN; Winona County

Photographer: unknown

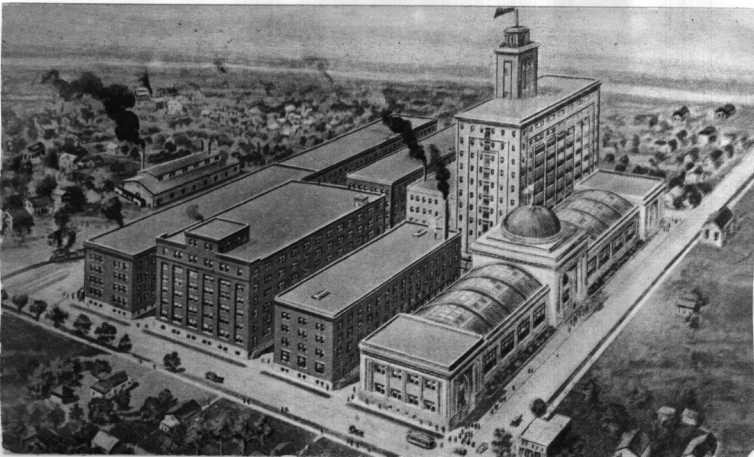
ca. 1910

Minnesota Historical Society, 690

Cedar St., St. Paul, MN 55101

East

43314



J.R. Watkins Medical Company Complex

Winona, MN; Winona County

Photographer: unknown

ca. 1930

Minnesota Historical Society, 690

Cedar St., St. Paul, MN 55101

Artist's rendition looking southeast

43317



J.R. Watkins Medical Company Complex
(Bldg. 1 - Administration Building
Winona, MN; Winona County
Photographer: unknown
ca. 1945

Minnesota Historical Society, 690
Cedar St., St. Paul, MN 55101
southeast
43319



J.R. Watkins Medical Company Complex
Winona, MN; Winona County
St. Paul Dispatch & Pioneer Press
1956

Minnesota Historical Society, 690
Cedar St., St. Paul, MN 55101
North, northeast
27358



J.R. Watkins Medical Company Complex

Winona, MN; Winona County

Charles Nelson

ca. 1973

Minnesota Historical Society, 690

Cedar St., St. Paul, MN 55101

northeast

0792/6



J.R. Watkins Medical Company Complex
(Building 1 - Administration Bldg.)

Winona, MN; Winona County

Robert Frame

1984

Minnesota Historical Society, 690

Cedar St., St. Paul, MN 55101

Looking northeast

06830/1



WATKINS

WATKINS MANUFACTURING CO.

J.R. Watkins Medical Company Complex
(North entrance)

Winona, MN; Winona County

Robert Frame

1984

Minnesota Historical Society, 690

Cedar St., St. Paul, MN 55101

Looking south

06830/5



J.R. Watkins Medical Company Complex
(Building 7 - Printing & Publishing)

Winona, MN; Winona County

Robert Frame

1984

Minnesota Historical Society, 690

Cedar St., St. Paul, MN 55101

Looking southeast

06830/7



15

33

J.R. Watkins Medical Company Complex
(Building 6 - Manufacturing)

Winona, MN; Winona County

Robert Frame

1984

Minnesota Historical Society, 690

Cedar St., St. Paul, MN 55101

Looking southeast

06830/8



J.R. Watkins Medical Company Complex
(Building 5 - Stock & Poultry Tonic
Addition)

Winona, MN; Winona County

Robert Frame

1984

Minnesota Historical Society, 690
Cedar St., St. Paul, MN 55101

Looking south

06830/9



J.R. Watkins Medical Company Complex
(Building #5 - Drug & Spice Mills)

Winona, MN; Winona County

Robert Frame

1984

Minnesota Historical Society, 690

Cedar St., St. Paul, MN 55101

Looking north

06830/11



J.R. Watkins Medical Company Complex
(Building 4 - Laboratories)

Winona, MN; Winona County

Robert Frame

1984

Minnesota Historical Society, 690

Cedar St., St. Paul, MN 55101

Looking north

06830/12



J.R. Watkins Medical Company Complex
(Building 3)

Winona, MN; Winona County

Robert Frame

1984

Minnesota Historical Society, 690

Cedar St., St. Paul, MN 55101

Looking north

06830/13



2

J.R. Watkins Medical Company Complex
(Building 2 - Manufacturing &
Warehouse), Winona, MN

Robert Frame

1984

Minnesota Historical Society, 690
Cedar St., St. Paul, MN 55101

Looking north

06830/14