



39832.18

PHOTOGRAPH NO. 1

NEVADA NORTHEAST RAILWAY, EAST ELY YARDS
ELY, NEVADA

GENERAL VIEW LOOKING WEST
FROM DEPOT

PHOTOGRAPHER: GORDON CHAPPELL
2003



PHOTOGRAPH NO. 2

NEVADA NORTHERN RAILWAY, EAST ELY YARDS
ELY, NEVADA

GENERAL VIEW, LOCOMOTIVE 93 IN FRONT OF DEPOT

PHOTOGRAPHER; GORDON CHAPPELL

2003



39129.14

PHOTOGRAPH NO. 3

NEVADA NORTHERN RAILWAY, EAST ELY YARDS
ELY, NEVADA

GENERAL VIEW, BUILDINGS AT WEST
END OF YARDS

(MASTER MECHANIC'S OFFICE,
ENGINE HOUSE AND MACHINE SHOP
AND AIR BRAKE TESTING HOUSE)

PHOTOGRAPHER: GORDON CHAPPELL

2003



39128.32 CROPPED

PHOTOGRAPH NO. 4

NEVADA NORTHERN RAILWAY, EAST ELY YARDS
ELY, NEVADA

DEPOT AND GENERAL OFFICES, SOUTH SIDE

PHOTOGRAPHER: GORDON CHAPPELL

2003



39130.31

PHOTOGRAPH NO. 5

NEVADA NORTHERN RAILWAY; EAST ELY YARDS

ELY, NEVADA

DEPOT AND GENERAL OFFICES, NORTH AND WEST SIDES

PHOTOGRAPHER: GORDON CHAPPELL

2003

GENERAL OFFICES

ROOM

- 2--GENERAL FREIGHT & PASSENGER AGENT
- 6--GENERAL MANAGER
- 9--AUDITOR & CLAIM AGENT

← UPSTAIRS →

39124.2

PHOTOGRAPH NO. 6

NEVADA NORTHERN RAILWAY, EAST ELY YARDS

ELY, NEVADA

DEPOT AND GENERAL OFFICES, DETAIL OF ENTRANCE

NOTE IRON RAIL WITH "SHARK'S TEETH"

PHOTOGRAPHER: GORDON CHAPPELL

2003



39125.19

PHOTOGRAPH NO. 7

NEVADA NORTHERN RAILWAY, EAST ELY YARDS

ELY, NEVADA

NEVADA NORTHERN RAILWAY OFFICE BUILDING, NORTH AND WEST SIDES

PHOTOGRAPHER: GORDON CHAPPELL

2003



39127.27

PHOTOGRAPH NO. 8

NEVADA NORTHERN RAILWAY, EAST ELY YARDS

ELY, NEVADA

NEVADA NORTHERN RAILWAY OFFICE BUILDING, NORTH AND WEST SIDES

PHOTOGRAPHER: GORDON CHAPPEL

2003



39127.28

PHOTOGRAPH NO. 9

NEVADA NORTHERN RAILWAY, EAST ELY YARDS

ELY, NEVADA

CONNECTED GARAGES, WEST AND SOUTH SIDES

PHOTOGRAPHER: GORDON CHAPPELL

2003



398314

PHOTOGRAPH NO. 10

NEVADA NORTHERN RAILWAY, EAST ELY YARDS

ELY, NEVADA

FREIGHT DEPOT, EAST AND NORTH SIDES

PHOTOGRAPHER: GORDON CHAPPELL

2003



39127.31

PHOTOGRAPH NO. 11
NEVADA NORTHERN RAILWAY, EAST ELY YARDS
ELY, NEVADA
FREIGHT DEPOT, WEST AND SOUTH SIDES
PHOTOGRAPHER: GORDON CHAPPELL
2003



39129.17

PHOTOGRAPH NO. 12

NEVADA NORTHERN RAILWAY, EAST ELY FACILITY

ELY, NEVADA

FIRE HOUSE AT RIGHT, AND BUS GARAGE AT CENTER,

SOUTH AND EAST SIDES

PHOTOGRAPHER: GORDON CHAPPELL

2003



39129.19

PHOTOGRAPH NO. 13

NEVADA NORTHERN RAILWAY, EAST ELY YARDS
ELY, NEVADA

GARAGE, SOUTH AND EAST SIDES
ENGINE HOUSE AT LEFT

PHOTOGRAPHER: GORDON CHAMPELL

2003



39129.18

PHOTOGRAPH NO. 14
NEVADA NORTHERN RAILWAY, EAST ELY YARDS
ELY, NEVADA
ELECTRIC SHOP, SOUTH AND EAST SIDES

PHOTOGRAPHER: GORDON CHAPPELL

2003



39124,20

PHOTOGRAPH NO. 15

NEVADA NORTHERN RAILWAY, EAST ELY YARDS
ELY, NEVADA

MASTER MECHANIC'S OFFICE AND
STOREHOUSE

PHOTOGRAPHER: GORDON CHAPPELL

2003



39126.8

PHOTOGRAPH NO. 16

NEVADA NORTHERN RAILWAY, EAST ELY YARDS

ELY, NEVADA

ENGINE HOUSE AND MACHINE SHOP, EAST SIDE

PHOTOGRAPHER: GORDON CHAPPELL

2003



39901.18

PHOTOGRAPH NO, 17
NEVADA NORTHERN RAILWAY, EAST ELY YARDS
ELY, NEVADA

ENGINE HOUSE, INTERIOR VIEW,
SHOWING LOCOMOTIVES

PHOTOGRAPHER: GORDON CHAPPELL

2003

ENGINE BOARD

H.M.R.

BOARD

EX. FIREMAN

TIME

ENGINEER

FIREMAN

SWAN

L. Labate

A.R. NEAGLE

T. J. LANI

KCC

BOARD

M. CARRICK

E. D. HOPKINS

D. & S. M. H.

R. HARBECKE

A. J. MINTOSH

S. S. SEARLE

JOHN RECK

R. HARBECKE

M. C. MCCONNAN

F. WRIGHT

1-20-28

T. SUTHERLAND

R. RICHARDS

ED Di SANZA

DAN ETWARDS

J. Marra

W-24-25

A.P. CANTY

S.D. ORR

ENG-23
BMO-274

ENG
BMO



39901.19

PHOTOGRAPH NO. 18

NEVADA NORTHERN RAILWAY, EAST ELY YARDS
ELY, NEVADA

MACHINE SHOP, INTERIOR VIEW
SHOWING ENGINE BOARD

PHOTOGRAPHER: GORDON CHAPPELL
2003



10300
DANGER
1392

39124.13

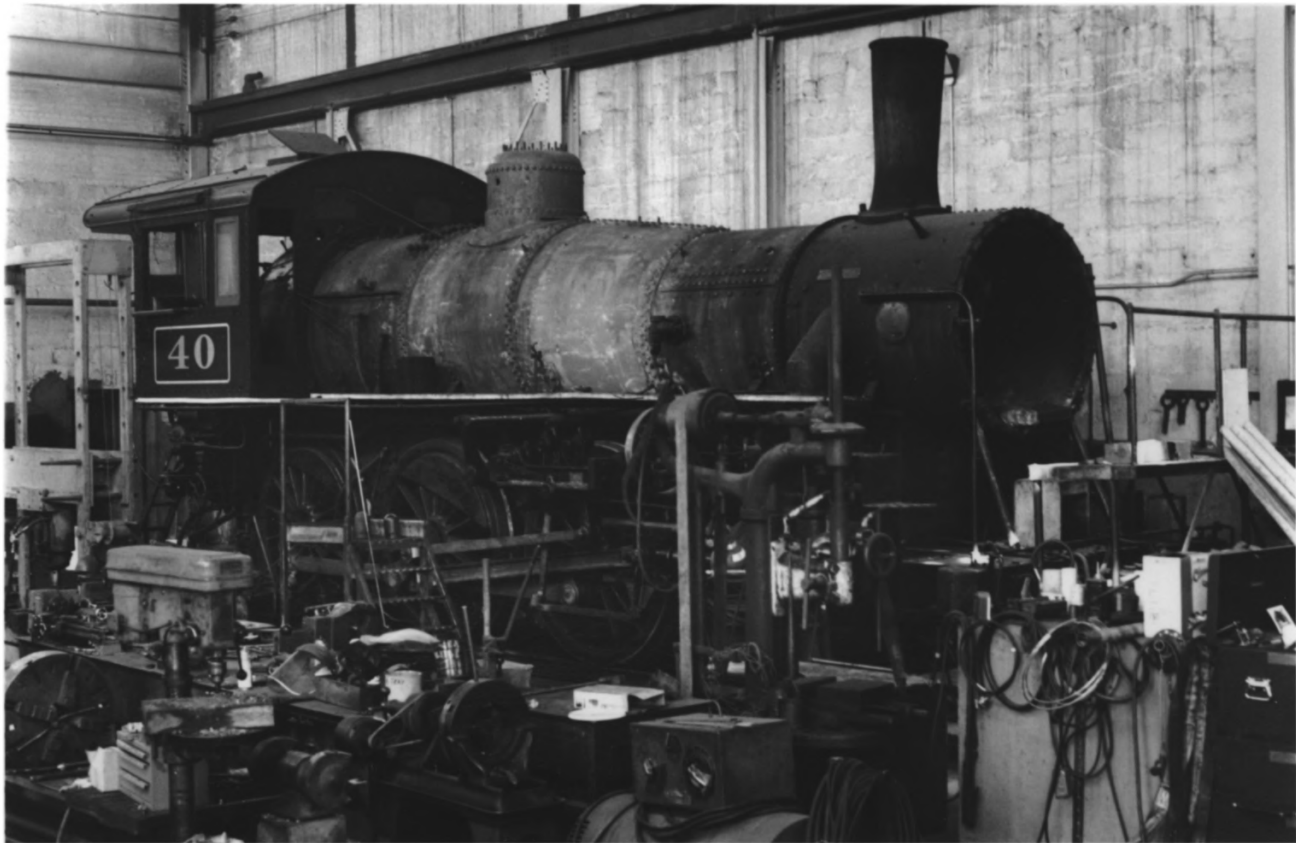
PHOTOGRAPH NO. 19

NEVADA NORTHERN RAILWAY, EAST ELY YARDS
ELY, NEVADA

ENGINE HOUSE, INTERIOR VIEW
SHOWING 1882 D&RG RW STOVE
(DENVER & RIO GRANDE RAILWAY)

PHOTOGRAPHER: GORDON CHAPPELL

2003



39901.3

PHOTOGRAPH NO. 20

NEVADA NORTHERN RAILWAY, EAST ELY YARDS

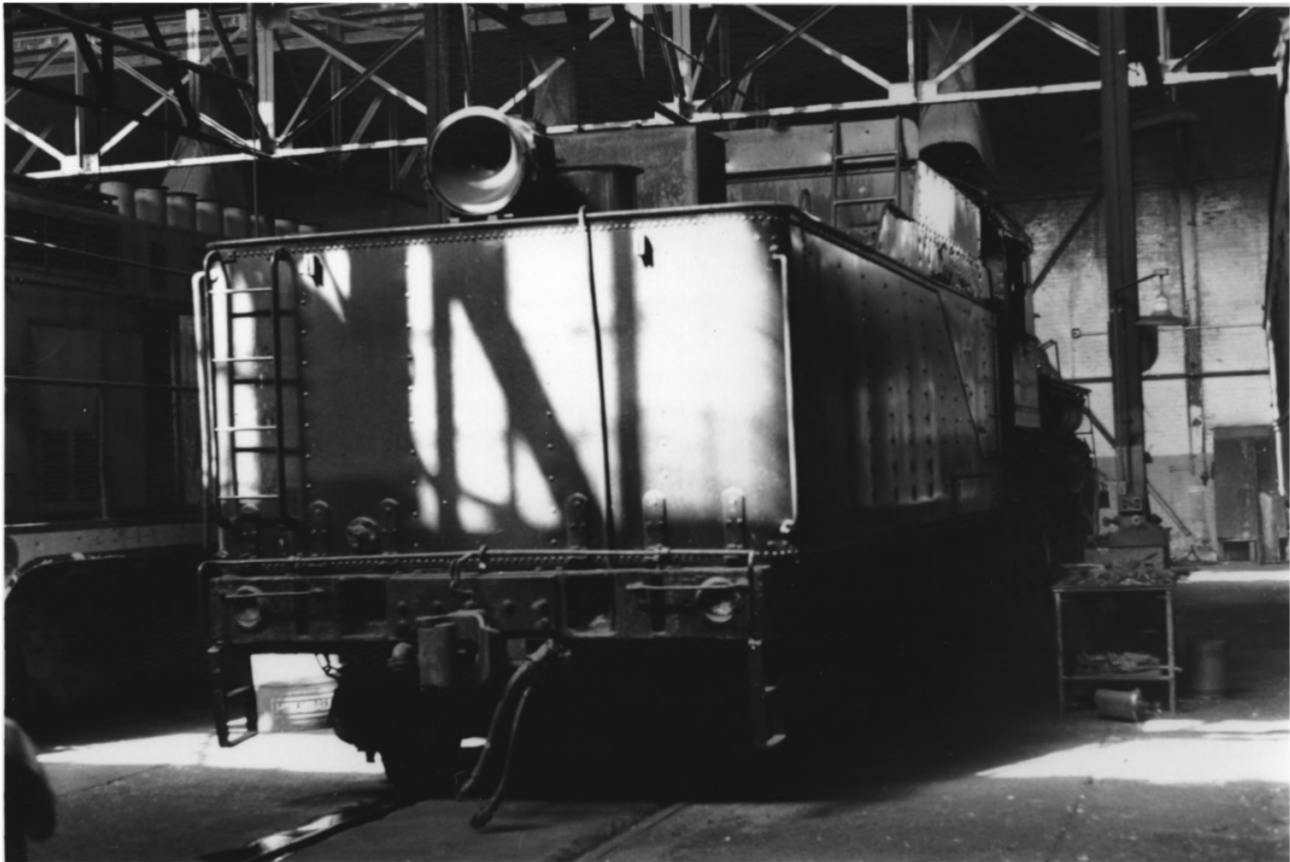
ELY, NEVADA

LOCOMOTIVE NO. 40 UNDERGOING

OVERHAUL IN MACHINE SHOP

PHOTOGRAPHER: GORDON CHAPPELL

2003



39901.14

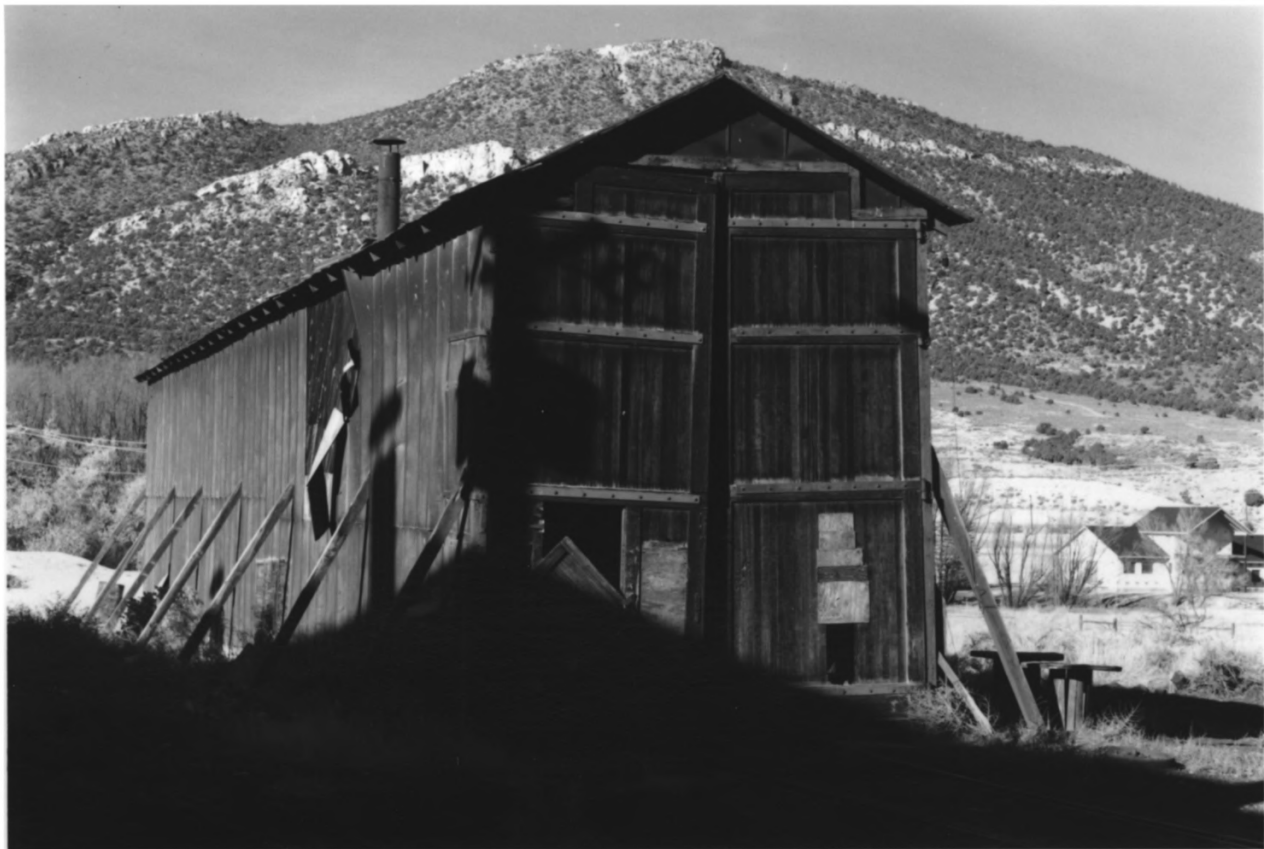
PHOTOGRAPH NO. 21

NEVADA NORTHERN RAILWAY, EAST ELY YARDS
ELY, NEVADA

LOCOMOTIVE NO. 81 IN ENGINE HOUSE

PHOTOGRAPHER: GORDON CHAPPELL

2003



39126.10

PHOTOGRAPH NO. 22

NEVADA NORTHERN RAILWAY, EAST ELY YARDS
ELY, NEVADA

OFFICER'S CAR SHED, EAST SIDE.

PHOTOGRAPHER: GORDON CHAPPELL

2003



39126.7

PHOTOGRAPH NO. 23

NEVADA NORTHERN RAILWAY, EAST ELY YARDS
ELY, NEVADA

PAINT SHOP, SOUTH AND EAST SIDES

PHOTOGRAPHER: GORDON CHAPPELL

2003



39126.26

PHOTOGRAPH NO. 24

NEVADA NORTHEAST RAILWAY, EAST ELY YARDS

ELY, NEVADA

PAINT SHOP, SOUTH SIDE

PHOTOGRAPHER: GORDON CHAPPELL

2003



39124.11

PHOTOGRAPH NO. 25

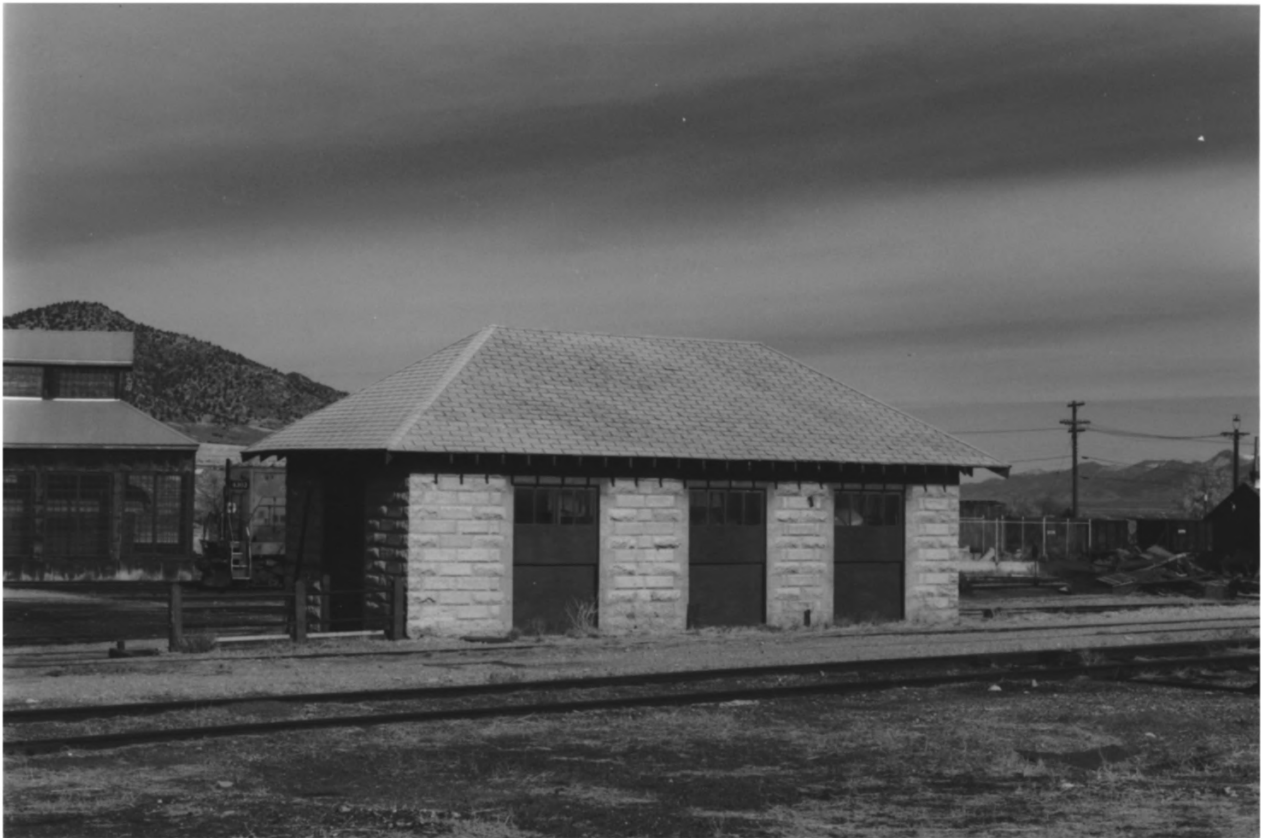
NEVADA NORTHERN RAILWAY, EAST ELY YARDS

ELY, NEVADA

PAINT SHOP, INTERIOR, SHOWING COMBINATION BAGGAGE COACH CAR 05

PHOTOGRAPHER: GORDON CHAPPELL

2004



39126.25

PHOTOGRAPH NO. 26

NEVADA NORTHERN RAILWAY, EAST ELY YARDS

ELY, NEVADA

AIR BRAKE TESTING HOUSE, SOUTH AND WEST SIDES, PAINT SHOP AT LEFT

PHOTOGRAPHER: GORDON CHAPPELL

2003



39130.5

PHOTO NO. 27

NEVADA NORTHERN RAILWAY, EAST ELY YARDS
ELY, NEVADA

CAR REPAIR SHOP, SOUTH AND EAST SIDES (TRACK
SCALES IN FOREGROUND)

PHOTOGRAPHER: GORDON CHAPPELL

2003



39126.24

PHOTOGRAPH NO. 28

NEVADA NORTHERN RAILWAY EAST ELY YARDS
ELY, NEVADA

CAR REPAIR SHOP, SOUTH AND WEST SIDES,

PHOTOGRAPHER: GORDON CHAPPELL

2003



079

VW

LV

10

39130.22

PHOTOGRAPH NO. 29

NEVADA NORTHERN RAILWAY, EAST ELY YARDS

ELY, NEVADA

CARPENTER SHOP

PHOTOGRAPHER: GORDON CHAPPELL

2003



39130.19

PHOTOGRAPH NO, 30
NEVADA NORTHERN RAILWAY, EAST ELY YARDS
ELY, NEVADA

BRAKE SHOP AT CENTER, AND TRIPLE VALVE LOCKER AND TOOL HOUSE
AT RIGHT

PHOTOGRAPHER: GORDON CHAPPELL

2003



39128.26

PHOTOGRAPH NO. 31

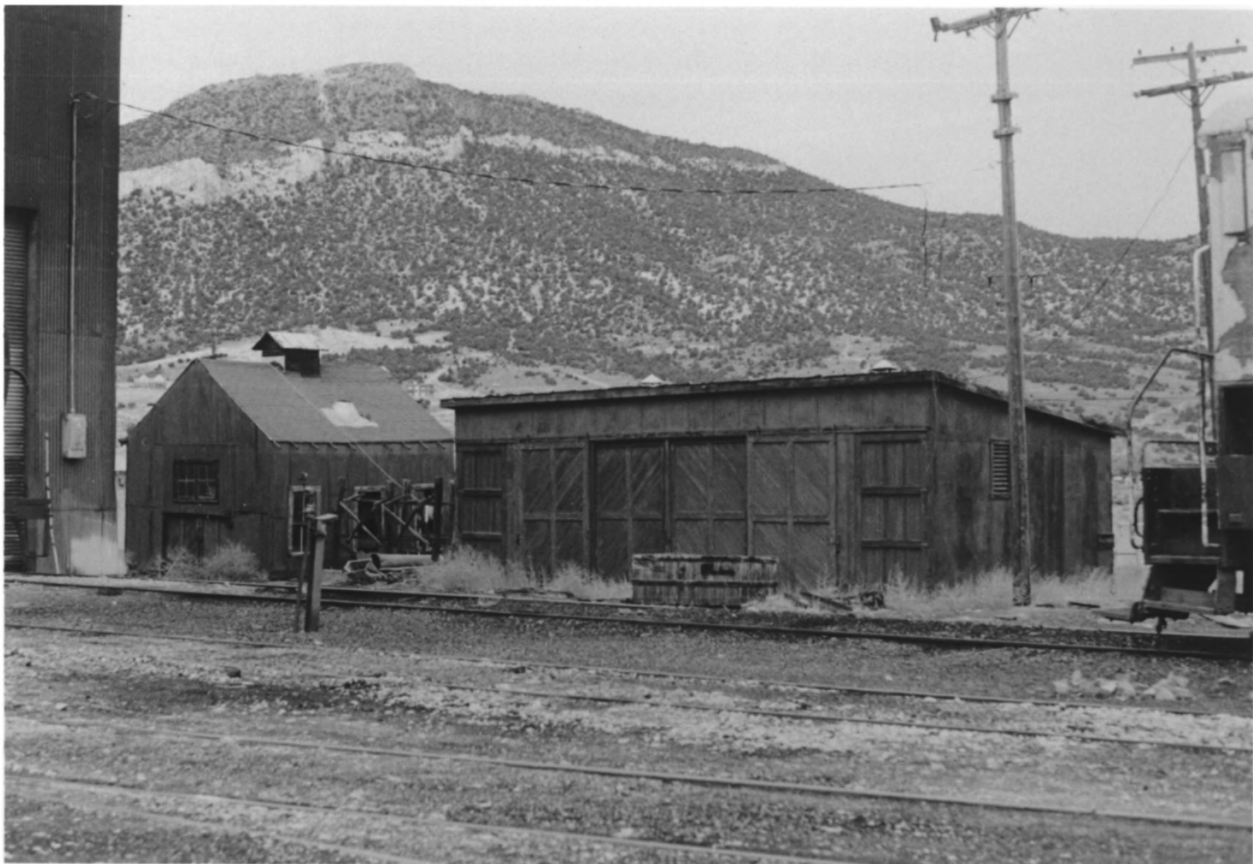
NEVADA NORTHERN RAILWAY, EAST ELY YARDS

ELY, NEVADA

BLACKSMITH SHOP

PHOTOGRAPHER: GORDON CHAPPELL

2003



PHOTOGRAPH NO. 32

NEVADA NORTHERN RAILWAY, EAST ELY YARDS

ELY, NEVADA

BLACKSMITH SHOP AT LEFT, AND MATERIAL STOREHOUSE AT RIGHT

Photographer: Gordon Chappell, 2003



PHOTOGRAPH NO. 33

NEVADA NORTHERN RAILWAY, EAST ELY YARDS
ELY, NEVADA

COACH CLEANER'S TOOL HOUSE

PHOTOGRAPHER: GORDON CHAPPELL

2003



39126.5

PHOTOGRAPH NO. 34

NEVADA NORTHERN RAILWAY, EAST ELY YARDS

ELY, NEVADA

COAL AND SAND TOWER

PHOTOGRAPHER: GORDON CHAPPELL

2003



PHOTOGRAPH NO. 35

NEVADA NORTHERN RAILWAY, EAST ELY YARDS

ELY, NEVADA

WATER TOWER, AND COAL AND SAND TOWER, FACING SOUTHWEST

PHOTOGRAPHER: GORDON CHAPPELL

2003



39126.6

PHOTOGRAPH NO. 36

NEVADA NORTHERN RAILWAY, EAST ELY YARDS

ELY, NEVADA

WATER TOWER

PHOTOGRAPHER: GORDON CHAPPELL

2003



39129.35-

PHOTOGRAPH NO. 37

NEVADA NORTHERN RAILWAY, EAST ELY YARDS

ELY, NEVADA

WATER COLUMN AND INGOLDSBY DUMP CARS

PHOTOGRAPHER: GORDON CHAPPELL

2003



39122.10

PHOTOGRAPH NO. 38

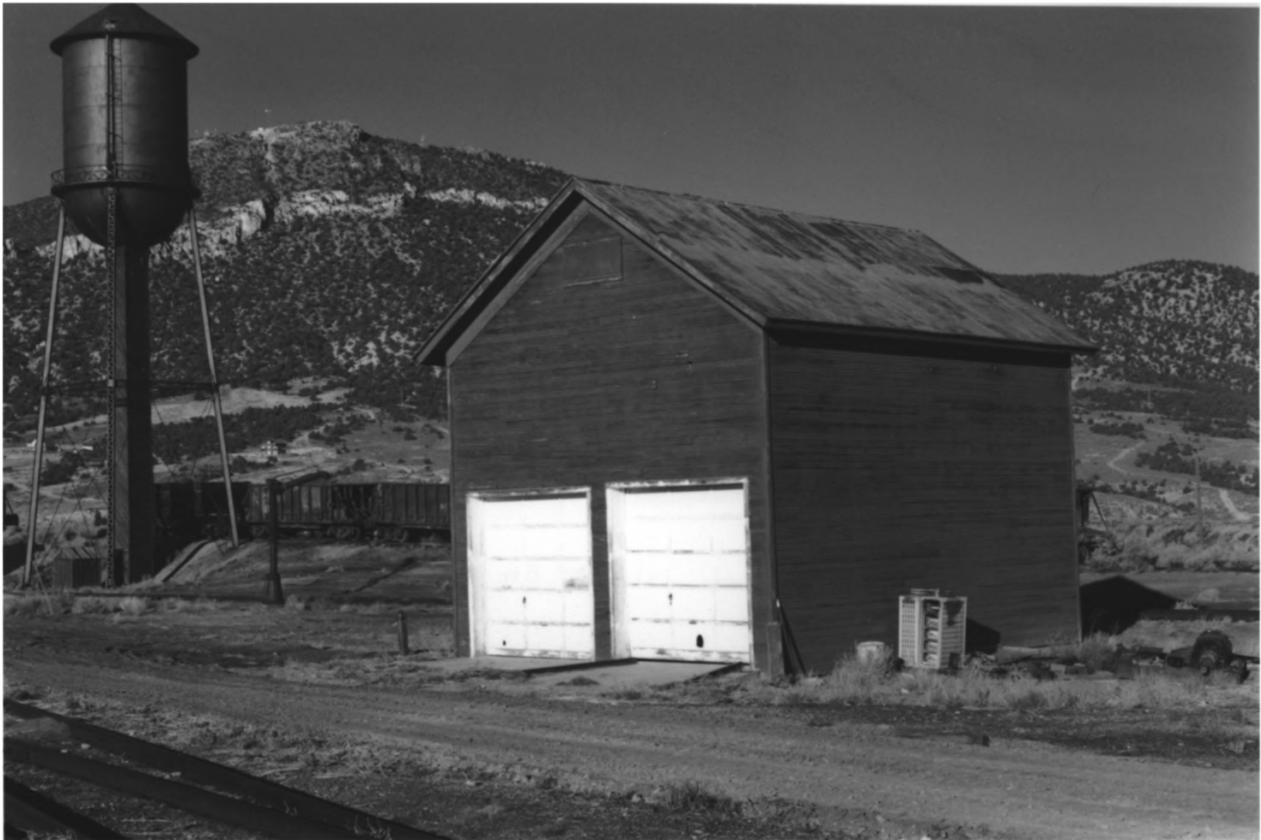
NEVADA NORTHERN RAILWAY, EAST ELY YARDS

ELY, NEVADA

LOCOMOTIVE NO. 93 AT THE WATER COLUMN

PHOTOGRAPHER: GORDON CHAPPELL

2003



34129.30

PHOTOGRAPH NO. 39

NEVADA NORTHERN RAILWAY, EAST ELY YARDS

ELY, NEVADA

ICE HOUSE

PHOTOGRAPHER, GORDON CHAPPELL

2003



39832.23

PHOTOGRAPH NO. 40

NEVADA NORTHERN RAILWAY, EAST ELY YARDS

ELY, NEVADA

CHIEF ENGINEER'S OFFICE, SOUTH AND WEST SIDES

PHOTOGRAPHER: GORDON CHAPPELL

2003



39129.7

PHOTOGRAPH NO. 41

NEVADA NORTHERN RAILWAY, EAST ELY YARDS
ELY, NEVADA

MOTOR CAR HOUSE AT RIGHT, AND STOREHOUSE AT LEFT

PHOTOGRAPHER: GORDON CHAPPELL

2004



PHOTOGRAPH NO. 42

NEVADA NORTHERN RAILWAY, EAST ELY YARDS

ELY, NEVADA.

SOUTH SIDE LOADING PLATFORM

PHOTOGRAPHER, GORDON CHAPPELL

2003



39129.8

PHOTOGRAPH NO. 43

NEVADA NORTHERN RAILWAY, EAST ELY YARDS

ELY, NEVADA

CAR INSPECTOR'S OFFICE AND OIL HOUSE

PHOTOGRAPHER: GORDON CHAPPELL

2004



39129.5

PHOTOGRAPH NO. 44

NEVADA NORTHERN RAILWAY, EAST ELY YARDS

ELY, NEVADA

OIL STORAGE HOUSE AT CENTER, AND CHIEF ENGINEER'S
OFFICE AT RIGHT

PHOTOGRAPHER: GORDON CHAPPELL

2003



39126.18

PHOTOGRAPH NO. 45

NEVADA NORTHERN RAILWAY, EAST ELY YARDS

ELY, NEVADA

ELECTRIC SUBSTATION

PHOTOGRAPHER: GORDON CHAPPELL

2003



39130.21

PHOTOGRAPH NO. 46

NEVADA NORTHERN RAILWAY, EAST ELY YARDS

ELY, NEVADA

NEW WASH HOUSE

PHOTOGRAPHER: GORDON CHAPPELL

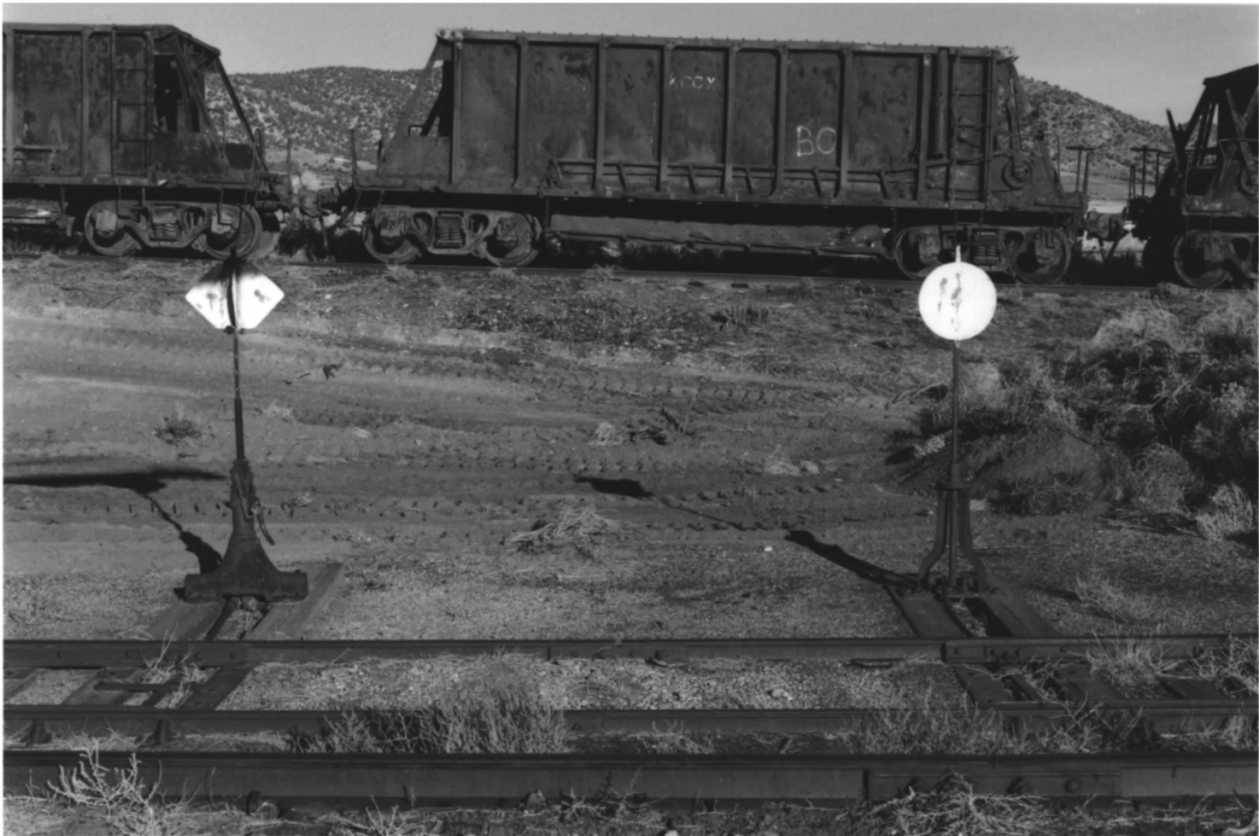
2003



39130.16

PHOTOGRAPH NO. 47
NEVADA NORTHERN RAILWAY, EAST ELY YARDS
ELY, NEVADA
EAST THROAT OF OREYARD
PHOTOGRAPHER: GORDON CHAPPELL

2003



39129.36

PHOTOGRAPH NO. 48

NEVADA NORTHERN RAILWAY, EAST ELY YARDS

ELY, NEVADA

TWO DIFFERENT PATTERNS OF HIGH SWITCH STANDS

PHOTOGRAPHER: GORDON CHAPPELL

2003



39130.24

PHOTOGRAPH NO. 49

NEVADA NORTHERN RAILWAY, EAST ELY YARDS
ELY, NEVADA

GROUND THROW SWITCH STAND

PHOTOGRAPHER: GORDON CHAPPELL

2003



39131.10

PHOTOGRAPH NO. 50

NEVADA NORTHERN RAILWAY, EAST ELY YARDS

ELY, NEVADA

LOW "RACOR" SWITCH STAND

PHOTOGRAPHER: GORDON CHAPPELL

2003



PHOTOGRAPH NO. 51

NEVADA NORTHERN RAILWAY, EAST ELY YARDS
ELY, NEVADA

LOW GROUND THROW SWITCH STAND

PHOTOGRAPHER: GORDON CHAPPELL

2003



39129.11

PHOTOGRAPH NO. 52

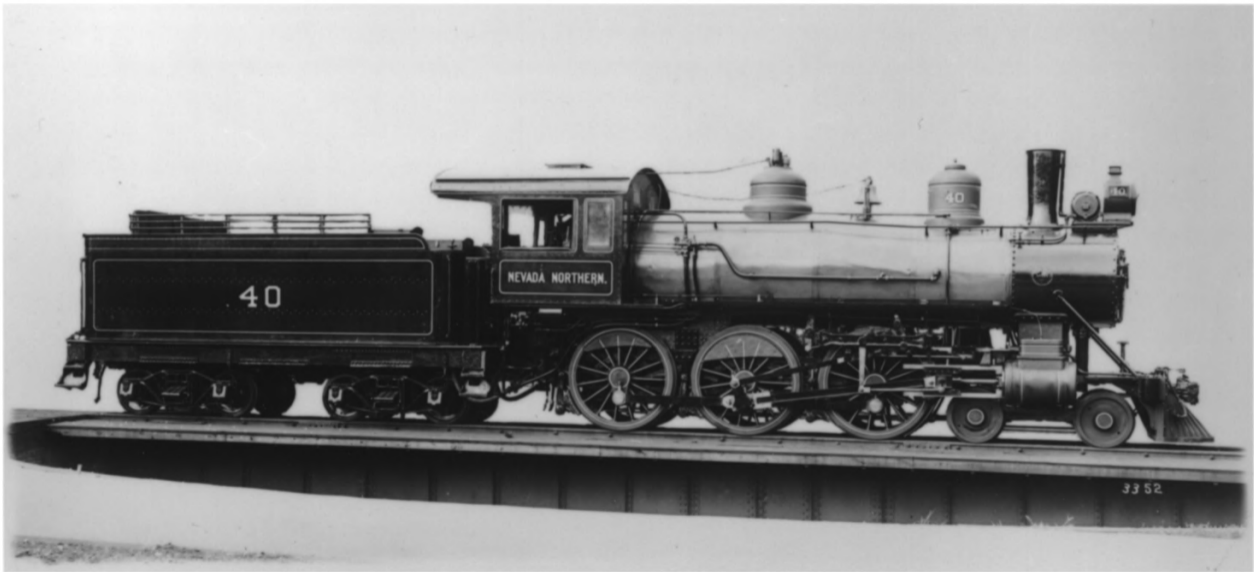
NEVADA NORTHERN RAILWAY
EAST ELY YARDS

ELY, NEVADA

RAILROAD CROSSING SIGN

PHOTOGRAPHER: GORDON CHAPPELL

2003



40

NEVADA NORTHERN.

40

33 52

PHOTOGRAPH NO. 53

NEVADA NORTHEAST RAILWAY, EAST ELY YARDS

ELY, NEVADA

BUILDER'S PHOTOGRAPH OF LOCOMOTIVE NO. 40, 1910

SOURCE: BALDWIN LOCOMOTIVE WORKS



39124.18

PHOTOGRAPH NO. 54

NEVADA NORTHERN RAILWAY, EAST ELY YARDS
ELY, NEVADA

LOCOMOTIVE NO. 93

PHOTOGRAPHER: GORDON CHAPPELL

2003



0932.13

PHOTOGRAPH NO. 55

NEVADA NORTHERN RAILWAY, EAST ELY YARDS
ELY, NEVADA

COACH NO. 5 IN ENGINE HOUSE

PHOTOGRAPHER: GORDON CHAPPELL

2004



B432.15

PHOTOGRAPH NO. 56

NEVADA NORTHERN RAILWAY, EAST ELY YARDS
ELY, NEVADA

MAIL/EXPRESS/BAGGAGE CAR NO. 20 IN ENGINE HOUSE

PHOTOGRAPHER: GORDON CHAPPELL

2004



0432.10

PHOTOGRAPH NO. 57

NEVADA NORTHERN RAILWAY, EAST ELY YARDS

ELY, NEVADA

1912 BOX CAR

PHOTOGRAPHER: GORDON CHAPPELL

2004



39126.33

PHOTOGRAPH NO. 58

NEVADA NORTHERN RAILWAY, EAST ELY YARDS
ELY, NEVADA

TANK CAR NO. 5

PHOTOGRAPHER: GORDON CHAPPELL

2003



39131.24

PHOTOGRAPH NO. 59
NEVADA NORTHERN RAILWAY
EAST ELY YARDS

ELY, NEVADA

INGOLDSBY PATENT BOTTOM DUMP ORE CAR NO. 1005
(COAL AND SAND TOWER IN BACKGROUND)

PHOTOGRAPHER: GORDON CHAPPELL

2003



0432.7

PHOTOGRAPH NO. 60

NEVADA NORTHERN RAILWAY, EAST ELY YARDS

ELY, NEVADA

BOTTOM DUMP CAR

PHOTOGRAPHER: GORDON CHAPPEL 2004



0932.8

PHOTO NO. 61
NEVADA NORTHERN RAILWAY, EAST ELY YARDS

ELY NEVADA

SIDE DUMP BALLAST CAR NO. 6A

PHOTOGRAPHER: GORDON CHAPPEL

2004



0932.5

PHOTOGRAPH NO. 62
NEVADA NORTHEAST RAILWAY, EAST ELY YARDS
ELY, NEVADA

BOTTOM DUMP CAR NO. 20A
PHOTOGRAPHER: GORDON CHAPPELL
2004



0932.21

PHOTOGRAPH NO. 63
NEVADA NORTHERN RAILWAY, EAST ELY YARDS
ELY, NEVADA

AIR DUMP BALLAST CAR NO. 216

PHOTOGRAPHER: GORDON CHAPPELL

2004



PHOTOGRAPH NO. 64

NEVADA NORTHERN RAILWAY, EAST ELY YARDS
ELY, NEVADA

ORE CAR

PHOTOGRAPHER: GORDON CHAPPELL

2004



39131.18

PHOTOGRAPH NO. 65
NEVADA NORTHERN RAILWAY, EAST ELY YARDS

ELY, NEVADA

SIDE DUMP BALLAST CAR NO. 423

PHOTOGRAPHER: GORDON CHAPPELL

2003



0932.4

PHOTOGRAPH NO. 66

NEVADA: NORTHERN RAILWAY, EAST ELY YARDS

ELY, NEVADA

HOPPER CAR NO. 3036

PHOTOGRAPHER: GORDON CHAPPELL

2004



39131.19

PHOTOGRAPH NO. 67
NEVADA NORTHERN RAILWAY, EAST ELY YARDS

ELY, NEVADA

HOPPER CAR NO. 1885

PHOTOGRAPHER: GORDON CHAPPEL

2003



PHOTOGRAPH NO. 68

NEVADA NORTHERN RAILWAY, EAST ELY YARDS
ELY, NEVADA

FLAT CAR NO. 17

PHOTOGRAPHER: GORDON CHAPPELL

2003



0932.6

PHOTOGRAPH NO. 69
NEVADA NORTHERN RAILWAY, EAST ELY YARDS

ELY, NEVADA

FLAT CAR, NUMBER UNKNOWN

PHOTOGRAPHER: GORDON CHAPPELL, 2004



NEVADA NORTHERN

3

PHOTOGRAPH NO. 70

NEVADA NORTHERN RAILWAY, EAST ELY YARDS

ELY, NEVADA

CABOOSE NO. 3

PHOTOGRAPHER; GORDON CHAPPELL

2004



0932.12

PHOTOGRAPH NO. 71
NEVADA NORTHERN RAILWAY, EAST ELY YARDS

ELY, NEVADA

WRECKING CRANE A AND TENDER IN CAR REPAIR SHOP

PHOTOGRAPHER: GORDON CHAPPELL

2004



PHOTOGRAPH NO. 72

NEVADA NORTHERN RAILWAY, EAST ELY YARDS
ELY, NEVADA

ROTARY SNOWPLOW B WITH TENDER

PHOTOGRAPHER UNKNOWN

APRIL 26, 1973



PHOTOGRAPH NO. 73

NEVADA NORTHERN RAILWAY, EAST ELY YARDS
ELY, NEVADA

JORDAN SPREADER NO. 360

PHOTOGRAPHER: GORDON CHAPPELL

2004



39131.28

PHOTOGRAPH NO. 79
NEVADA NORTHERN RAILWAY - EAST ELY YARDS
ELY, NEVADA

SCALE TEST CAR NO. 5000
PHOTOGRAPHER: GORDON CHAPPEL

2003



93

NEVADA NORTHERN

CO
ELL

Locomotive 93 was built by the American Locomotive Company in January 1909 for the Nevada Northern Railway. Her working life was to haul ore from the copper mines at Ruth Nevada to the smelter in McGill Nevada. Retired in the late 1950's locomotive 93 was put back into operation in May 1993, by the Nevada Northern Railway Museum. In operation today, locomotive 93 hauls passengers along the old ore route during the summer months. For more information on the Nevada Northern Railway Museum please visit our website www.nnry.com or call the museum at (775) 289-2085.