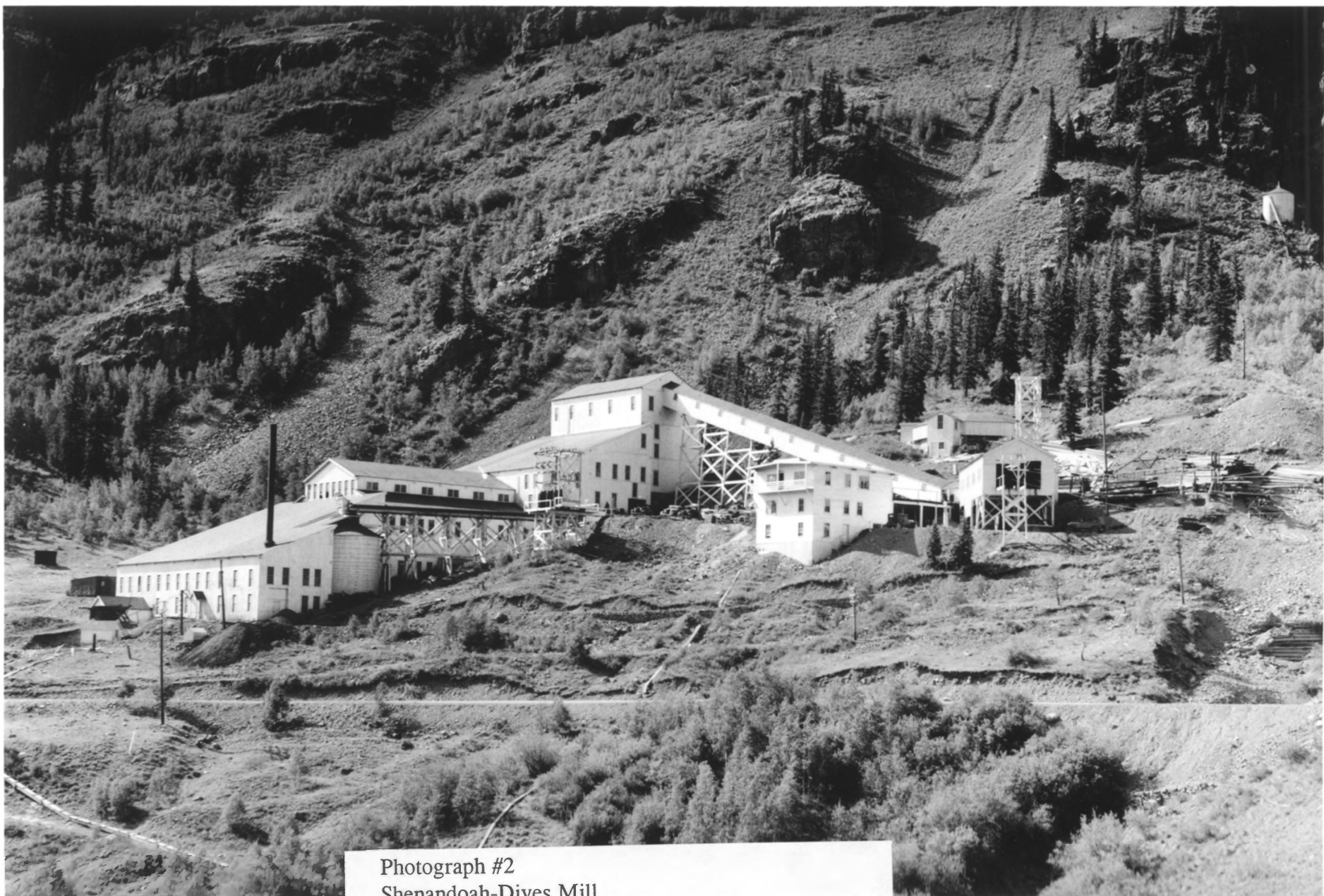




Photograph #1
Shenandoah-Dives Mill
Silverton Vicinity, San Juan County, Colorado
Mill & Tailings Ponds, Aerial View, SE
Unknown, San Juan County Historical Society, 1960



Photograph #2
Shenandoah-Dives Mill
Silverton Vicinity, San Juan County, Colorado
Mill, North
Unknown, San Juan County Historical Society, 1932



Photograph #3
Shenandoah-Dives Mill
Silverton Vicinity, San Juan County, Colorado
Mill, North from Tailings Pond #1
Frederick Athearn, San Juan County Historical Society, September 1995



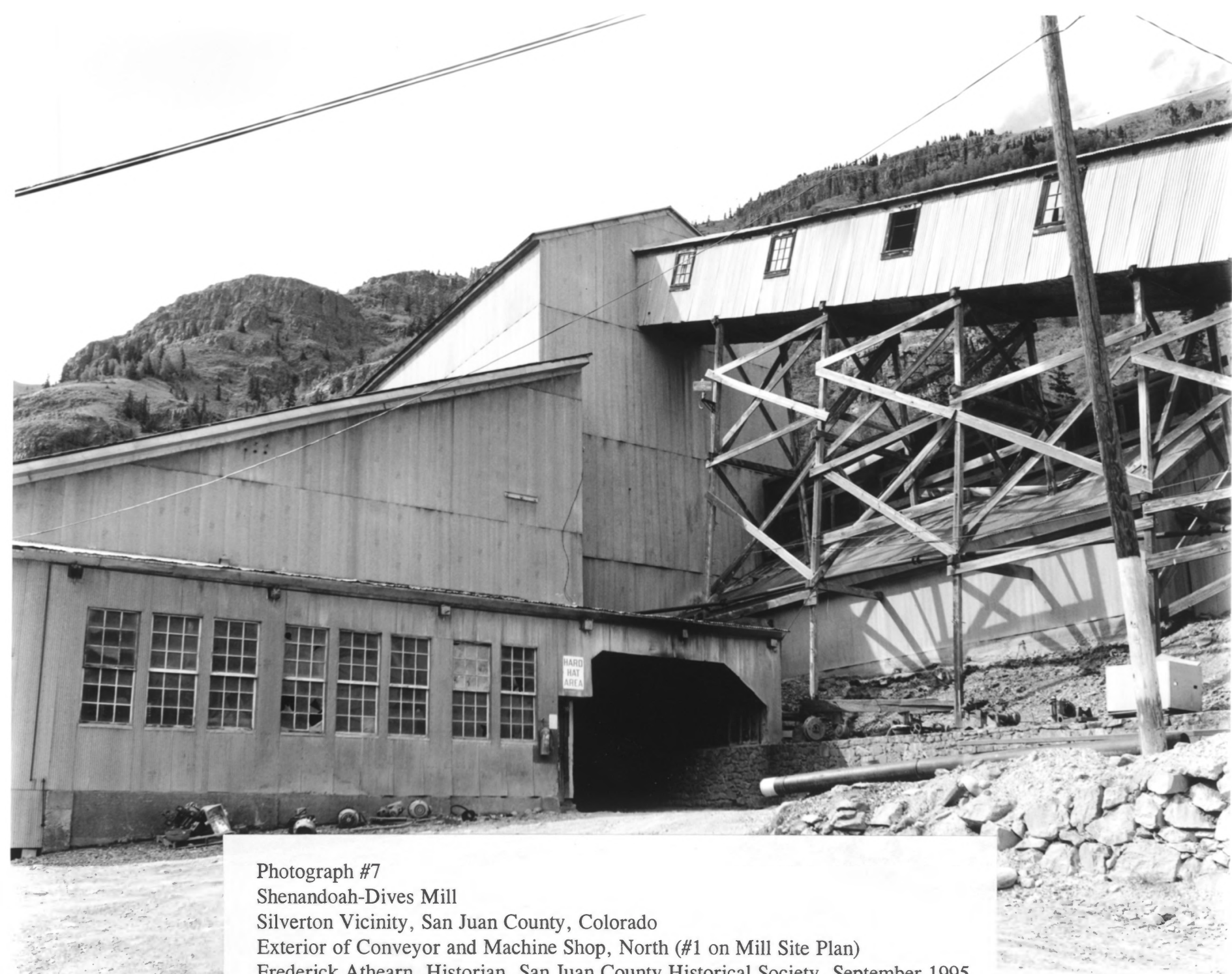
Photograph #4
Shenandoah-Dives Mill
Silverton Vicinity, San Juan County, Colorado
Mill, North
Frederick Athearn, Historian, San Juan County Historical Society, September 1995



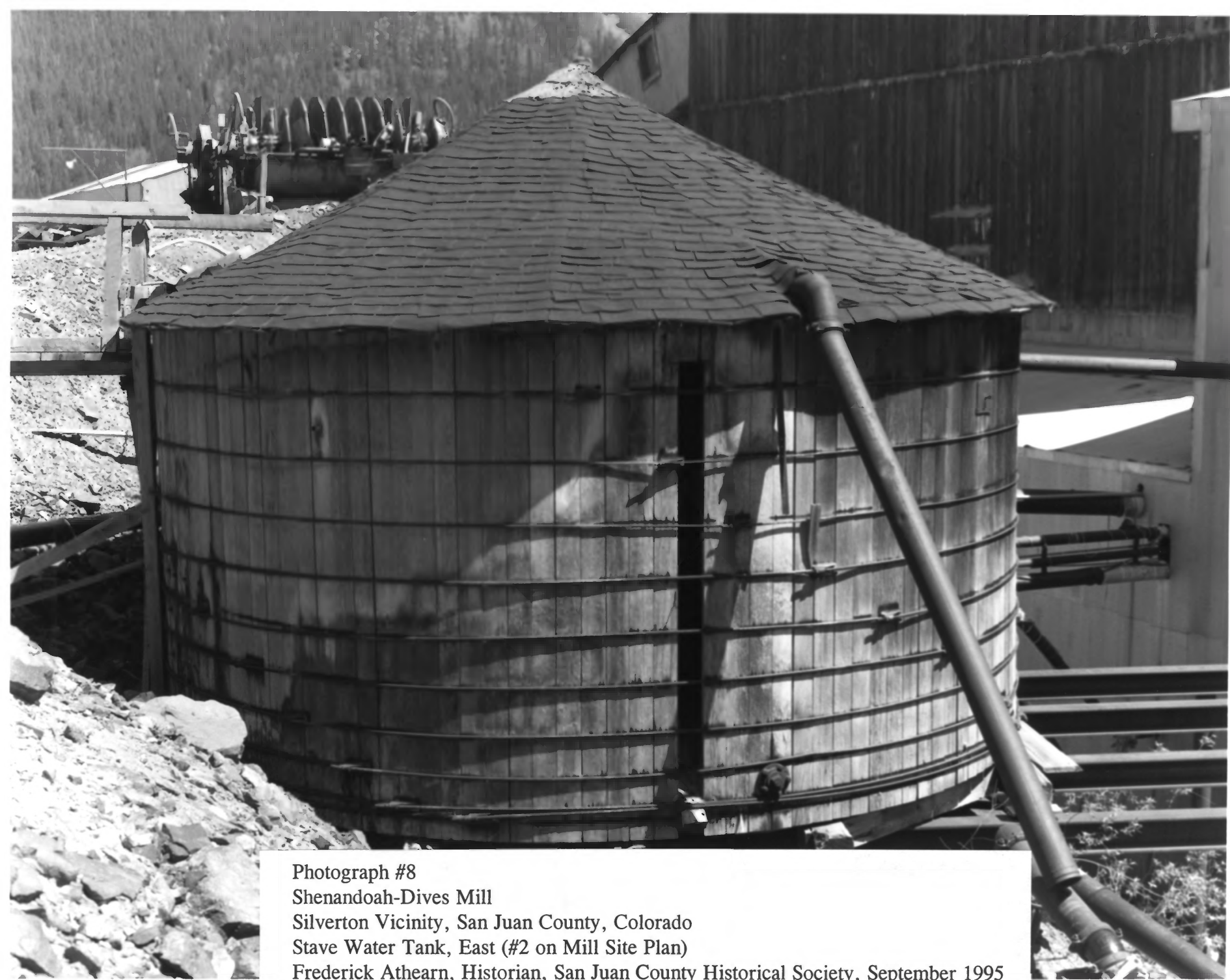
Photograph #5
Shenandoah-Dives Mill
Silverton Vicinity, San Juan County, Colorado
Exterior of Crushing Plant, NE (#3 on Mill Site Plan)
Frederick Athearn, Historian, San Juan County Historical Society, September 1995



Photograph #6
Shenandoah-Dives Mill
Silverton Vicinity, San Juan County, Colorado
Exterior of the Conveyor, North (#1 & #3 on Mill Site Plan)
Frederick Athearn, Historian, San Juan County Historical Society, September 1995



Photograph #7
Shenandoah-Dives Mill
Silverton Vicinity, San Juan County, Colorado
Exterior of Conveyor and Machine Shop, North (#1 on Mill Site Plan)
Frederick Athearn, Historian, San Juan County Historical Society, September 1995



Photograph #8

Shenandoah-Dives Mill

Silverton Vicinity, San Juan County, Colorado

Stave Water Tank, East (#2 on Mill Site Plan)

Frederick Athearn, Historian, San Juan County Historical Society, September 1995



Photograph #9

Shenandoah-Dives Mill

Silverton Vicinity, San Juan County, Colorado

Stave Coal Tank with truck ramp, SW (#6 on Mill Site Plan)

Dawn Bunyak, Historian, National Park Service, IMDE-CNR, June 1995



Photograph #10

Shenandoah-Dives Mill

Silverton Vicinity, San Juan County, Colorado

Tram Terminal & Crushing Plant, West (#4 & #3 on Mill Site Plan)

Dawn Bunyak, Historian, National Park Service, IMDE-CNR, June 1995



Photograph #11

Shenandoah-Dives Mill

Silverton Vicinity, San Juan County, Colorado

Tram Terminal, North (#4 on Mill Site Plan)

Dawn Bunyak, Historian, National Park Service, IMDE-CNR, June 1995



Photograph #12

Shenandoah-Dives Mill

Silverton Vicinity, San Juan County, Colorado

Mill Office/Assay Building, NE (#5 on Mill Site Plan and UTM Point)

Dawn Bunyak, Historian, National Park Service, IMDE-CNR, June 1995



Photograph #13

Shenandoah-Dives Mill

Silverton Vicinity, San Juan County, Colorado

Mill Office/Assay Building, East (#5 on Mill Site Plan and UTM Point)

Dawn Bunyak, Historian, National Park Service, IMDE-CNR, June 1995



Photograph #14

Shenandoah-Dives Mill

Silverton Vicinity, San Juan County, Colorado

Mill Office/Assay Building, South (#5 on Mill Site Plan and UTM Point)

Dawn Bunyak, Historian, National Park Service, IMDE-CNR, June 1995



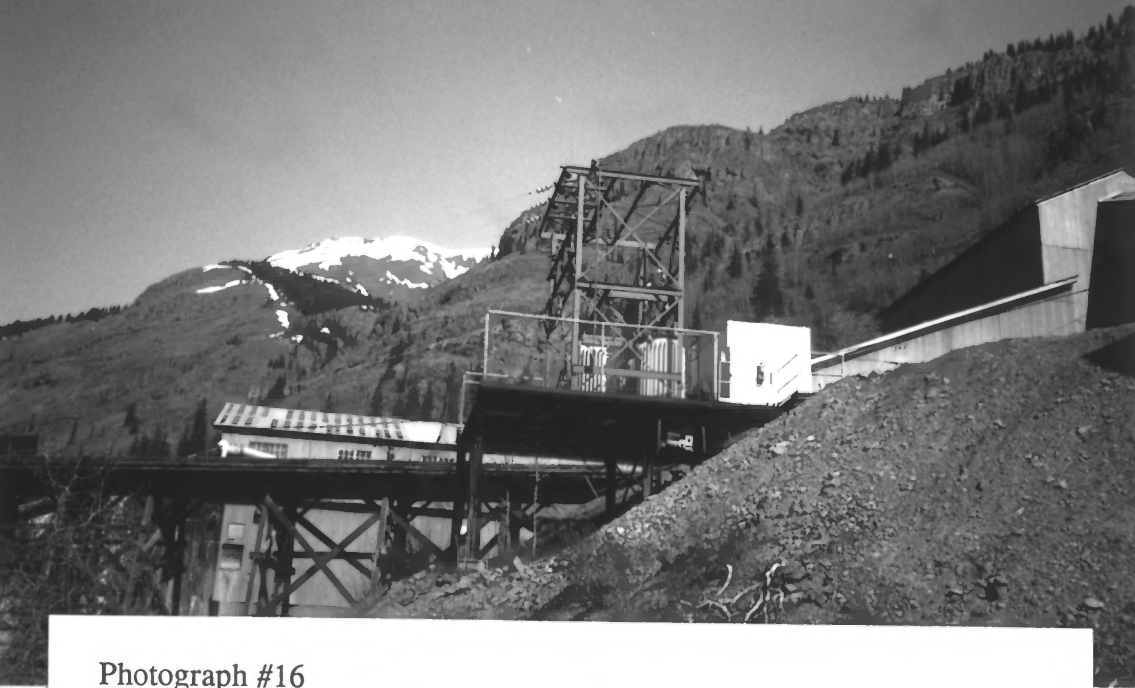
Photograph #15

Shenandoah-Dives Mill

Silverton Vicinity, San Juan County, Colorado

Trailer, NW

Dawn Bunyak, Historian, National Park Service, IMDE-CNR, June 1995



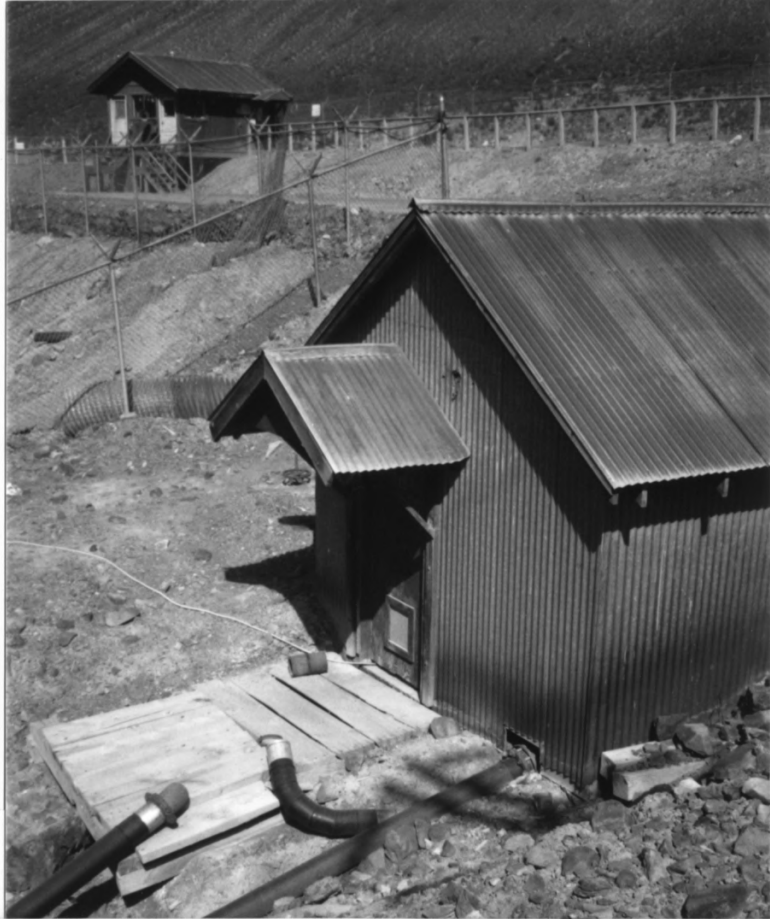
Photograph #16

Shenandoah-Dives Mill

Silverton Vicinity, San Juan County, Colorado

Electric Transformer, West

Dawn Bunyak, Historian, National Park Service, IMDE-CNR, June 1995



Photograph #17

Shenandoah-Dives Mill

Silverton Vicinity, San Juan County, Colorado

Noncontributing Guard Shack and Valve House, NE

Dawn Bunyak, Historian, National Park Service, IMDE-CNR, June 1995



Photograph #18

Shenandoah-Dives Mill

Silverton Vicinity, San Juan County, Colorado

Noncontributing Lime Storage Building

Dawn Bunyak, Historian, National Park Service, IMDE-CNR, June 1995



Photograph #19
Shenandoah-Dives Mill
Silverton Vicinity, San Juan County, Colorado
One-Ton Tram Bucket inside Tram Terminal (#4 on Mill Site Plan)
Silver Rich Images (John Matsko), Olathe, Kansas, August 1998



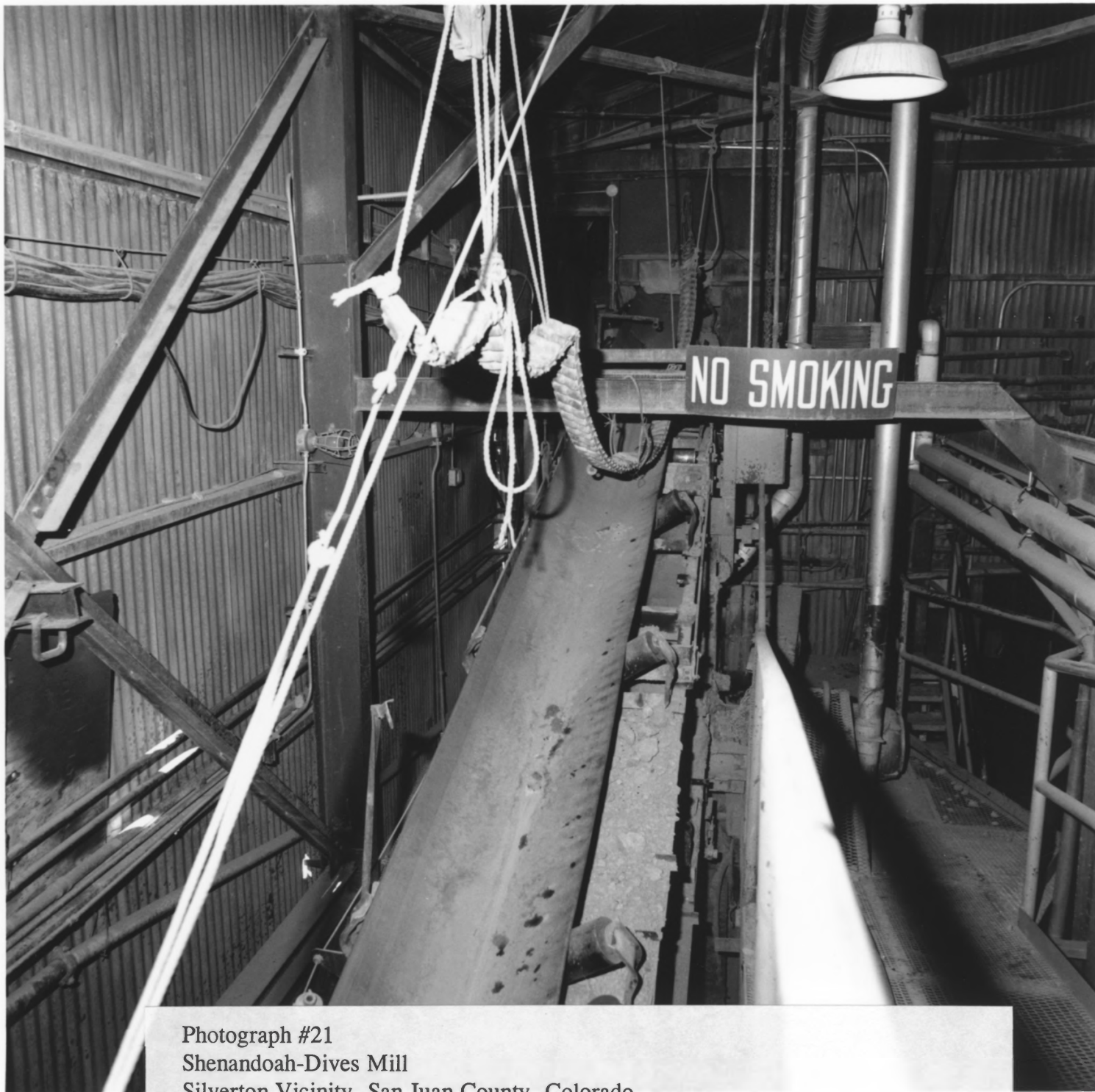
Photograph #20

Shenandoah-Dives Mill

Silverton Vicinity, San Juan County, Colorado

Symons Short-head, Cone Crusher (#3 on Flow Chart)

Frederick Athearn, Historian, San Juan County Historical Society, September 1995



Photograph #21

Shenandoah-Dives Mill

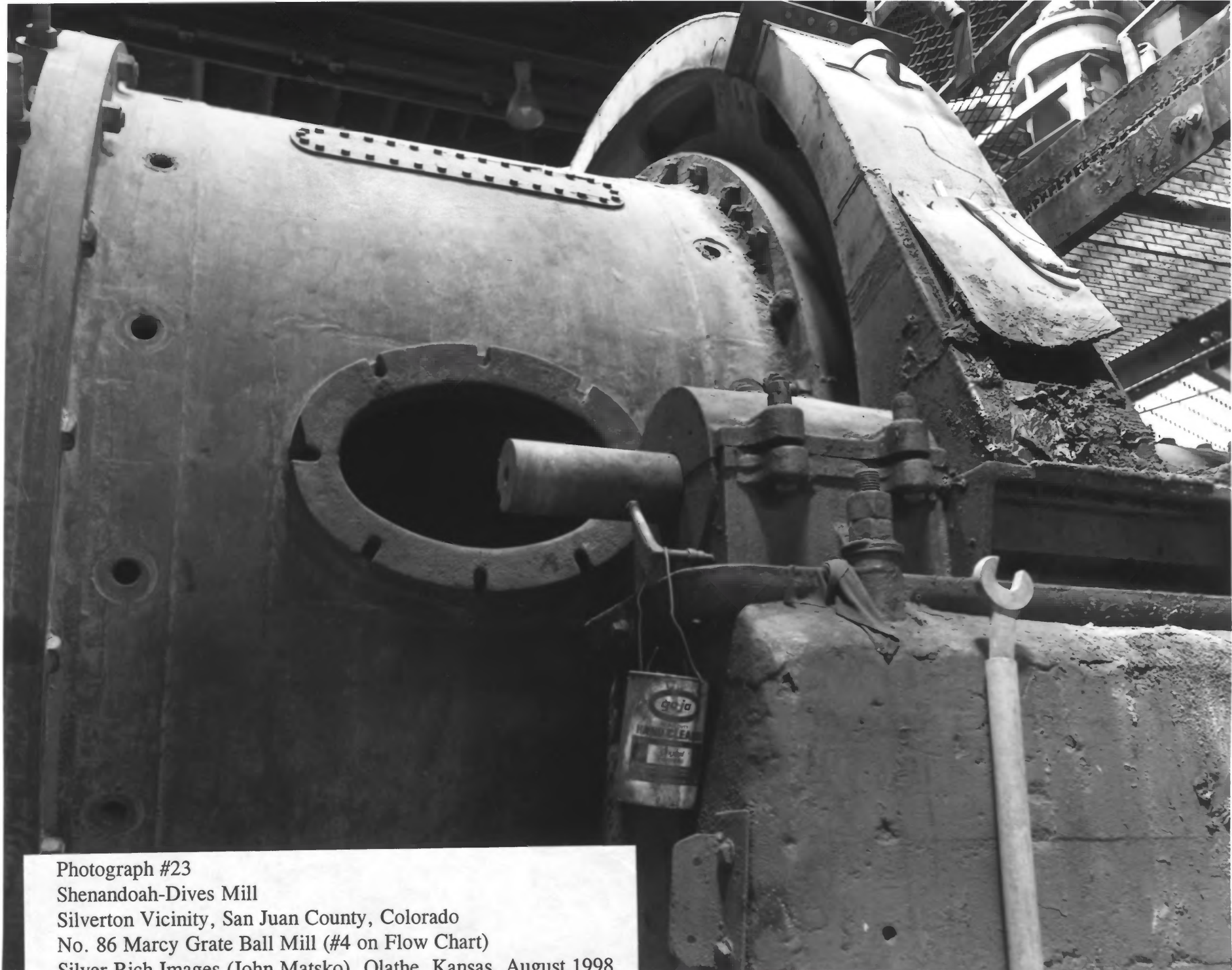
Silverton Vicinity, San Juan County, Colorado

Interior of Crushing Plant Conveyor Belt

Frederick Athearn, Historian, San Juan County Historical Society , September 1995



Photograph #22
Shenandoah-Dives Mill
Silverton Vicinity, San Juan County, Colorado
Interior of 200 ft. Conveyor with Belt (#1 on Flow Chart)
Frederick Athearn, Historian, San Juan County Historical Society, September 1995



Photograph #23
Shenandoah-Dives Mill
Silverton Vicinity, San Juan County, Colorado
No. 86 Marcy Grate Ball Mill (#4 on Flow Chart)
Silver Rich Images (John Matsko), Olathe, Kansas, August 1998



Photograph #24

Shenandoah-Dives Mill

Silverton Vicinity, San Juan County, Colorado

Balls from the Marcy Grate Ball Mill (#4 on Flow Chart)

Silver Rich Images (John Matsko), Olathe, Kansas, August 1998



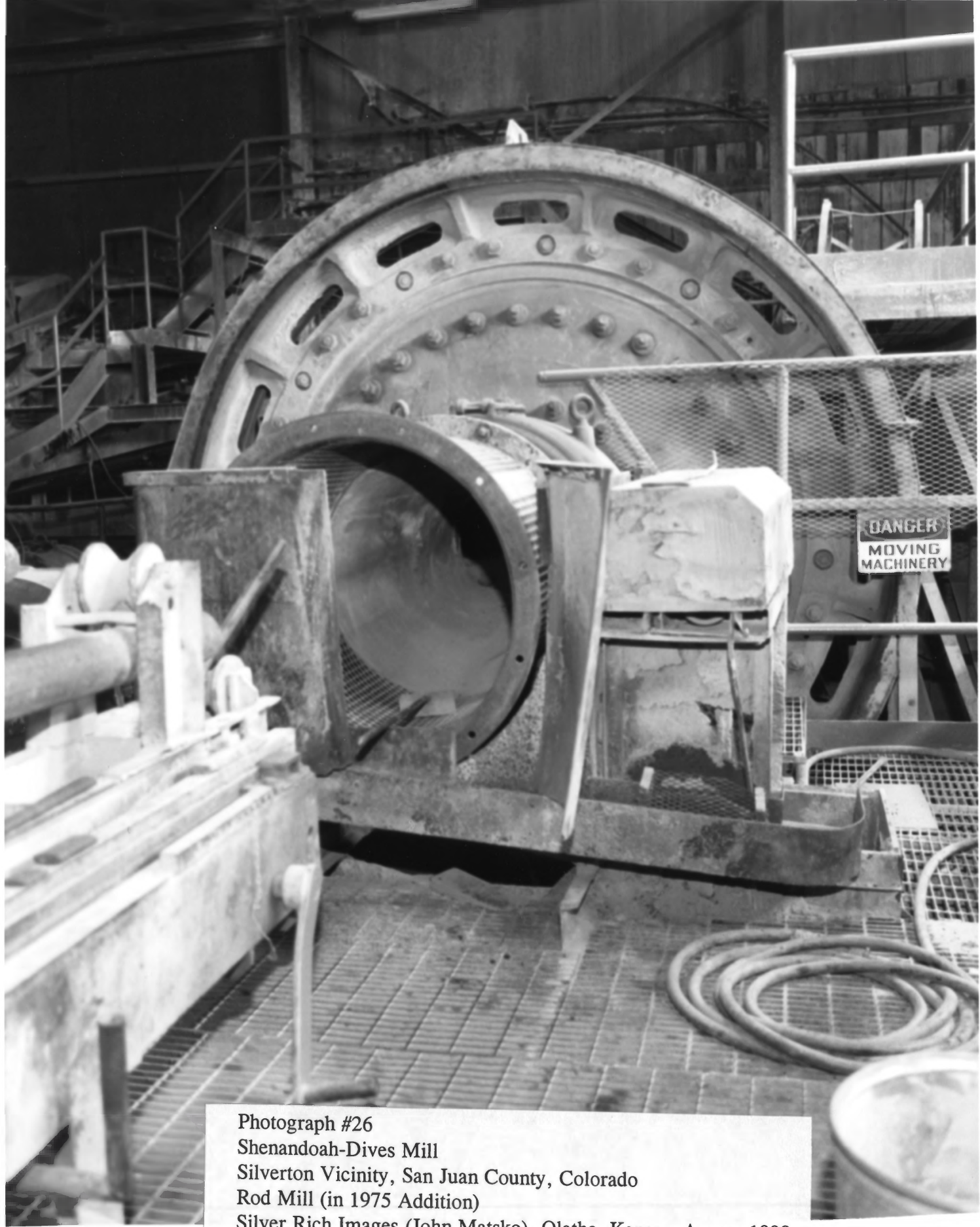
Photograph #25

Shenandoah-Dives Mill

Silverton Vicinity, San Juan County, Colorado

Dorr Quadruplex Classifier (#5 on Flow Chart)

Frederick Athearn, Historian, San Juan County Historical Society, September 1995



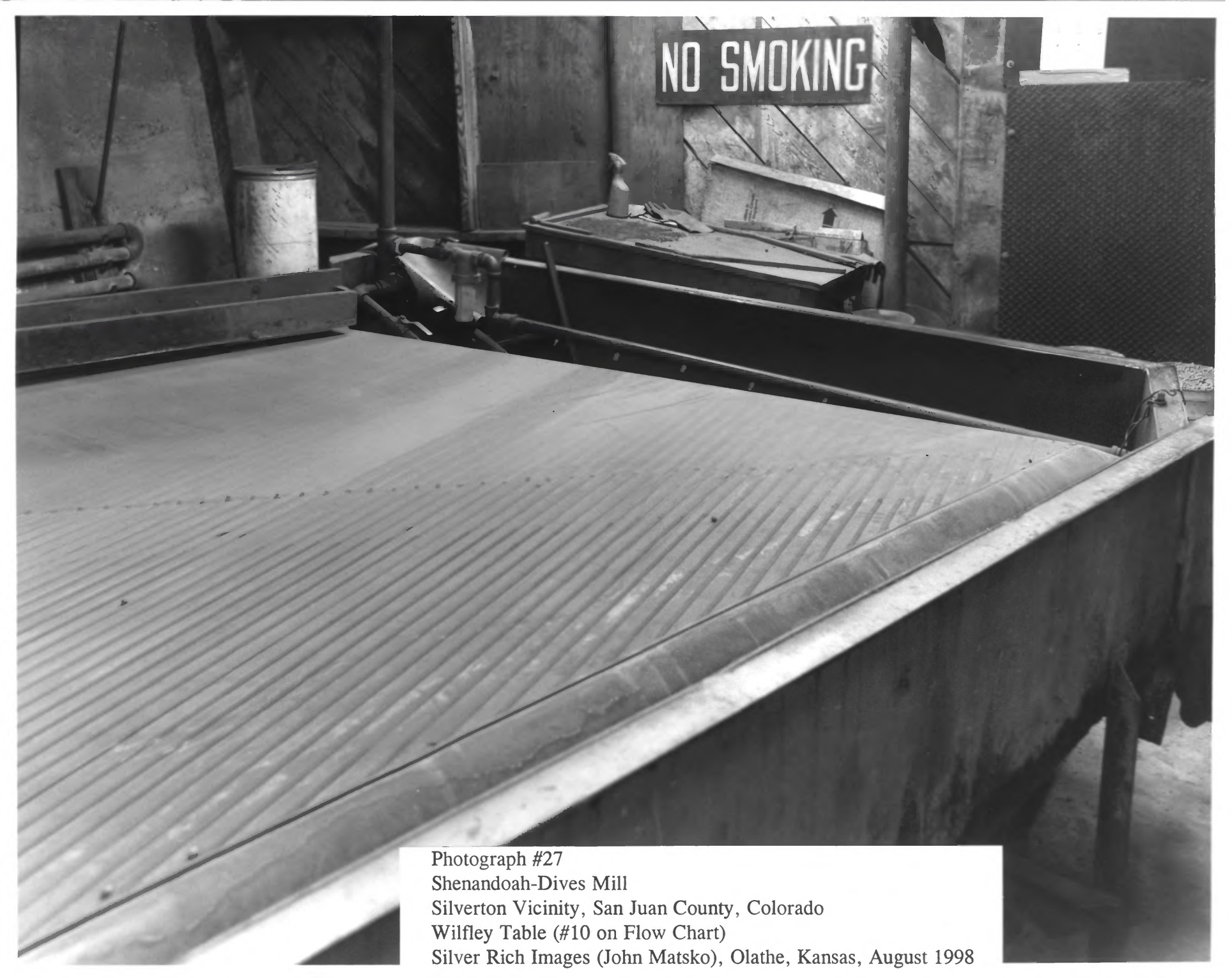
Photograph #26

Shenandoah-Dives Mill

Silverton Vicinity, San Juan County, Colorado

Rod Mill (in 1975 Addition)

Silver Rich Images (John Matsko), Olathe, Kansas, August 1998



NO SMOKING

Photograph #27

Shenandoah-Dives Mill

Silverton Vicinity, San Juan County, Colorado

Wilfley Table (#10 on Flow Chart)

Silver Rich Images (John Matsko), Olathe, Kansas, August 1998



Photograph #28

Shenandoah-Dives Mill

Silverton Vicinity, San Juan County, Colorado

20-Cell No. 21 Mineral Separation Flotation Machine (#11 & 12 on Flow Chart)

Frederick Athearn, Historian, San Juan County Historical Society , September 1995



Photograph #29

Shenandoah-Dives Mill

Silverton Vicinity, San Juan County, Colorado

8-Cell No. 18 Denver Flotation Machine, (#24 & 27 on Flow Chart)

Frederick Athearn, Historian, San Juan County Historical Society, September 1995



Photograph #30

Shenandoah-Dives Mill

Silverton Vicinity, San Juan County, Colorado

Dorr Thickener (#30 on Flow Chart)

Frederick Athearn, Historian, San Juan County Historical Society , September 1995



Photograph #31
Shenandoah-Dives Mill
Silverton Vicinity, San Juan County, Colorado
Canvas Wheel Filter (#32 & 33 on Flow Chart)
Silver Rich Images (John Matsko), Olathe, Kansas, August 1998



Photograph #32
Shenandoah-Dives Mill
Silverton Vicinity, San Juan County, Colorado
Interior of Mill Workshop
Frederick Athearn, Historian, San Juan County Historical Society , September 1995