



Clovelly Garden Apartments
(Holman Gardens)
6309 NE Union
Portland, Multnomah Co., Oregon

Heritage Investment Corporation, Photo, 1982
1220 S.W. Morrison, Suite 1303
Portland, OR 97225

Photo 1 of 11 East Facade

FRONTING NE UNION AVENUE

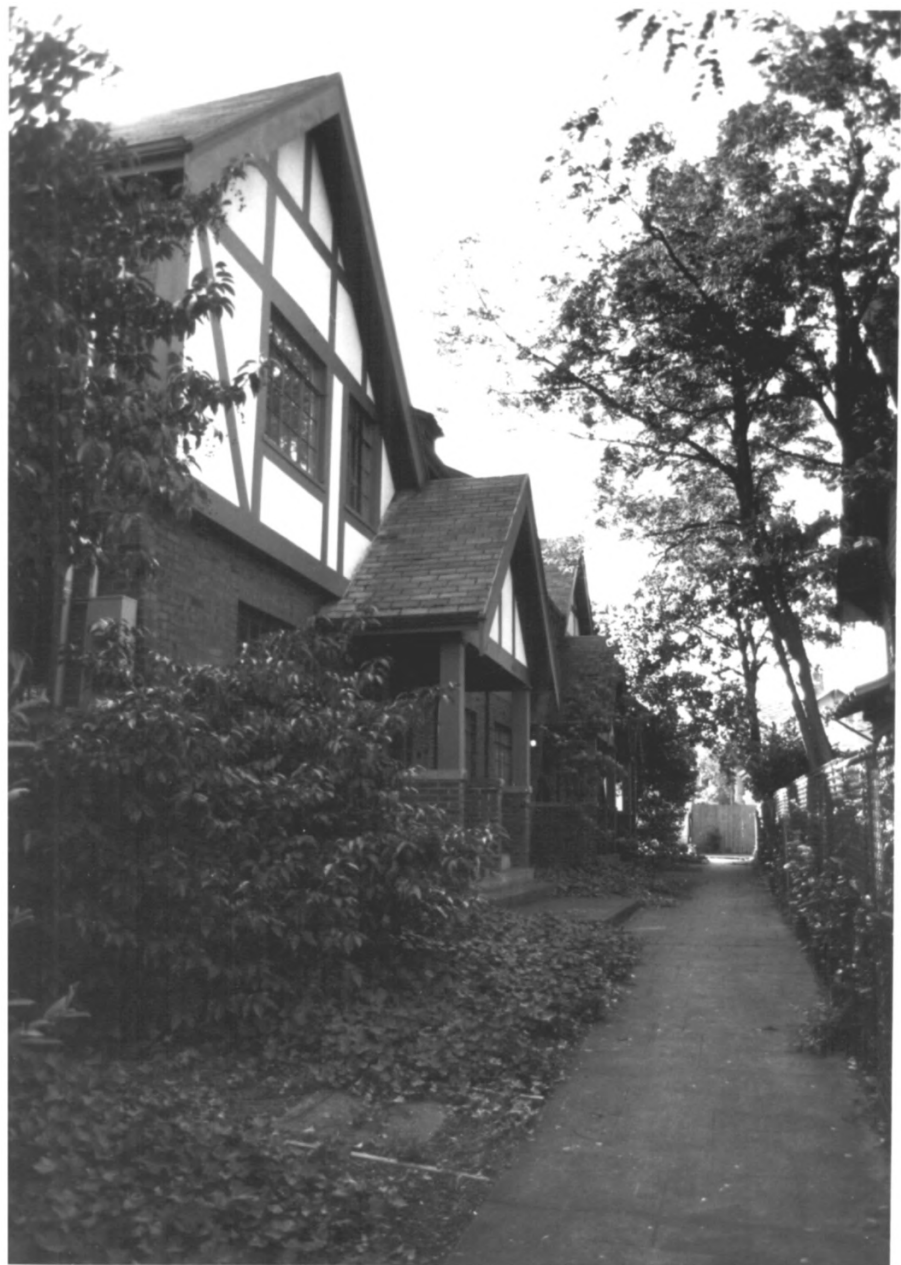


Clovelly Garden Apartments
(Holman Gardens)
6309 NE Union
Portland, Multnomah Co., Oregon

Heritage Investment Corporation, Photo, 1982
1220 S.W. Morrison, Suite 1303
Portland, OR 97225

Photo 2 of 11 South Facade

FRONTING NE HOLMAN STREET



Clovelly Garden Apartments
(Holman Gardens)
6309 NE Union
Portland, Multnomah Co., Oregon

Heritage Investment Corporation, Photo, 1982
1220 S.W. Morrison, Suite 1303
Portland, OR 97225

Photo 3 of 11 Looking west at North Facade



Clovelly Garden Apartments
(Holman Gardens)
6309 NE Union
Portland, Multnomah Co., Oregon

Heritage Investment Corporation, Photo, 1982
1220 S.W. Morrison, Suite 1303
Portland, OR 97225

Photo 4 of 11 Looking Northeast at West
Facade



Clovelly Garden Apartments
(Holman Gardens)
6309 NE Union
Portland, Multnomah Co., Oregon

Heritage Investment Corporation, Photo, 1982
1220 S.W. Morrison, Suite 1303
Portland, OR 97225

Photo 5 of 11 *INTRODUCTION* Courtyard looking east



Clovelly Garden Apartments
(Holman Gardens)
6309 NE Union
Portland, Multnomah Co., Oregon

Heritage Investment Corporation, Photo, 1982
1220 S.W. Morrison, Suite 1303
Portland, OR 97225

Photo 6 of 11 ^{INTENTION} Courtyard looking west



Clovelly Garden Apartments
(Holman Gardens)
6309 NE Union
Portland, Multnomah Co., Oregon

Heritage Investment Corporation, Photo, 1982
1220 S.W. Morrison, Suite 1303
Portland, OR 97225

Photo 7 of 11 Exterior detail Door



Clovelly Garden Apartments
(Holman Gardens)
6309 NE Union
Portland, Multnomah Co., Oregon

Heritage Investment Corporation, Photo, 1982
1220 S.W. Morrison, Suite 1303
Portland, OR 97225

Photo 8 of 11 Exterior detail Window

337

339



Clovelly Garden Apartments

(Holman Gardens)

6309 NE Union

Portland, Multnomah Co., Oregon

Heritage Investment Corporation, Photo, 1982

1220 S.W. Morrison, Suite 1303

Portland, OR 97225

Photo 9 of 11 Exterior Detail Double Entrance



Clovelly Garden Apartments
(Holman Gardens)
6309 NE Union
Portland, Multnomah Co., Oregon

Heritage Investment Corporation, Photo, 1982
1220 S.W. Morrison, Suite 1303
Portland, OR 97225

Photo 10 of 11 Interior view typical unit



Clovelly Garden Apartments
(Holman Gardens)
6309 NE Union
Portland, Multnomah Co., Oregon

Heritage Investment Corporation, Photo, 1982
1220 S.W. Morrison, Suite 1303
Portland, OR 97225

Photo 11 of 11 Interior View Typical Unit