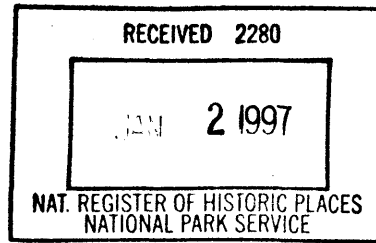


United States Department of the Interior
National Park Service



National Register of Historic Places Registration Form

This form is for use in nominating or requesting determination for individual properties and districts. See instruction in *How to Complete the National Register of Historic Places Registration Form* (National Register Bulletin 16A). Complete each item by marking "x" in the appropriate box or by entering the information requested. If an item does not apply to the property being documented, enter "N/A" for "not applicable." For functions, architectural classification, materials and areas of significance, enter only categories and subcategories from the instructions. Place additional entries and narrative items on continuation sheets (NPS Form 10-900a). Use a typewriter, word processor, or computer, to complete all items.

1. Name of Property

historic name Knearl School
other names/site number 5MR627

2. Location

street & number 314 South Clayton Street [N/A] not for publication
city or town Brush [N/A] vicinity
state Colorado code CO county Morgan code 087 zip code 80723

3. State/Federal Agency Certification

As the designated authority under the National Historic Preservation Act, as amended, I hereby certify that this nomination request for determination of eligibility meets the documentation standards for registering properties in the National Register of Historic Places and meets the procedural and professional requirements set forth in 36 CFR Part 60. In my opinion, the property meets does not meet the National Register criteria. I recommend that this property be considered significant nationally statewide locally.
(See continuation sheet for additional comments [].)

[Signature] State Historic Preservation Officer December 26, 1996 Date
Signature of certifying official/Title
State Historic Preservation Office, Colorado Historical Society
State or Federal agency and bureau

In my opinion, the property meets does not meet the National Register criteria.
(See continuation sheet for additional comments [].)

Signature of certifying official/Title Date

State or Federal agency and bureau

4. National Park Service Certification

I hereby certify that the property is:
 entered in the National Register
See continuation sheet [].
 determined eligible for the
National Register
See continuation sheet [].
 determined not eligible for the
National Register.
 removed from the
National Register
 other, explain
See continuation sheet [].

[Signature] Signature of the Keeper 1-31-97 Date
Edson H. Beall

Knearl School
Name of Property

Morgan County, Colorado
County/State

5. Classification

Ownership of Property
(Check as many boxes as apply)

- private
- public-local
- public-State
- public-Federal

Category of Property
(Check only one box)

- building(s)
- district
- site
- structure
- object

Number of Resources within Property
(Do not count previously listed resources.)

Contributing	Noncontributing	
1	0	buildings
0	0	sites
0	0	structures
0	0	objects
1	0	Total

Name of related multiple property listing.

(Enter "N/A" if property is not part of a multiple property listing.)

N/A

Number of contributing resources previously listed in the National Register.

0

6. Function or Use

Historic Function
(Enter categories from instructions)

EDUCATION: school

Current Functions
(Enter categories from instructions)

RECREATION AND CULTURE: museum

7. Description

Architectural Classification
(Enter categories from instructions)

LATE 19TH AND EARLY 20TH CENTURY
AMERICAN MOVEMENTS

Materials
(Enter categories from instructions)

foundation CONCRETE
walls BRICK

roof ASPHALT
other STEEL
ALUMINUM

Narrative Description

(Describe the historic and current condition of the property on one or more continuation sheets.)

**United States Department of the Interior
National Park Service**

**National Register of Historic Places
Continuation Sheet**

Section number 7 Page 1

Knearl School
Morgan County, Colorado

DESCRIPTION

The Knearl School, completed in 1911, is a red brick, one-story, approximately 58 ft. x 30 ft. rectangular plan, symmetrical building situated on an approximately 280 ft. x 300 ft. lot bounded on the southwest corner of Clayton and Ellsworth Streets. The simple site landscaping consists largely of sod with a large dirt playground area to the west. The lot includes several mature deciduous trees and a single juniper foundation planting beside the entry. The garden level concrete basement walls rise above grade to a watertable at the level of the basement sills. Solid brick forms the remainder of the exterior walls to the roof. The upper-story windows are wood frame double-hung sash with concrete sills. The hipped roof gently slopes down to broad eaves with boxed cornices and wide fascia boards. The main entry extends forward, is accessed by a 7-step concrete stoop with brick balustrade, and is topped by a gable roof with a plain vergeboard. A hip-roofed extension on the rear (west) elevation contains interior stairs. Two brick chimneys rise through the roof just west of the ridge line. The upper level interior consists of five office spaces off a central corridor and two small cloakrooms flanking the main entry. The lower level contains a classroom, two restrooms, a utility area and three small storerooms.

The Knearl School faces east onto Clayton Street from its large lot at the southern end of Brush. The symmetrical facade consists of a central entry and two flanking classrooms. The entry is accessed by a 7-step concrete stair flanked by stepped-back brick balustrades with concrete caps. Narrow side lights surround the glazed wood entry door topped by a transom. The entry is framed by narrow brick pilasters which spring from the balustrades and end in a simple entablature with corbeled brick architrave and flared concrete cornice. A metal sign panel containing the word "school" fills the upper gable end. The entry is flanked by narrow wood frame, four-over-one sash windows with straight brick arches and concrete sills supported by brick corbeling. The north and south elevations of the entry extension each contain a recessed brick panel with concrete sill. The entry terminates with a boxed cornice gable roof of asphalt composition shingles with plain vergeboard, aluminum fascia and steel soffit. The classroom wings are identical and each consists of three awning type basement windows covered by wood panels, partially intersecting the concrete foundation walls, topped by three evenly spaced, wood frame, two-over-one sash windows with straight brick arches and a continuous concrete sill supported by brick corbeling. The upper-story windows on this and all other elevations are covered by wood frame one-over-one screens. The asphalt composition hipped roof slopes down into wide eaves with a boxed cornice, steel soffit and aluminum fascia.

The north and south elevations are identical. Each contains three evenly spaced basement and upper-story windows of the same design as found on the east elevation. The rear (west elevation) contains a central hipped roof extension enclosing the interior stairs. The stairs are accessed through a solid wood door topped by a transom covered by a wood panel. The north and south elevations of the extension each contain a narrow two-over-one window. The west elevation wall to the south of the stairway extension contains two boarded-over basement windows and a former coal chute. The west

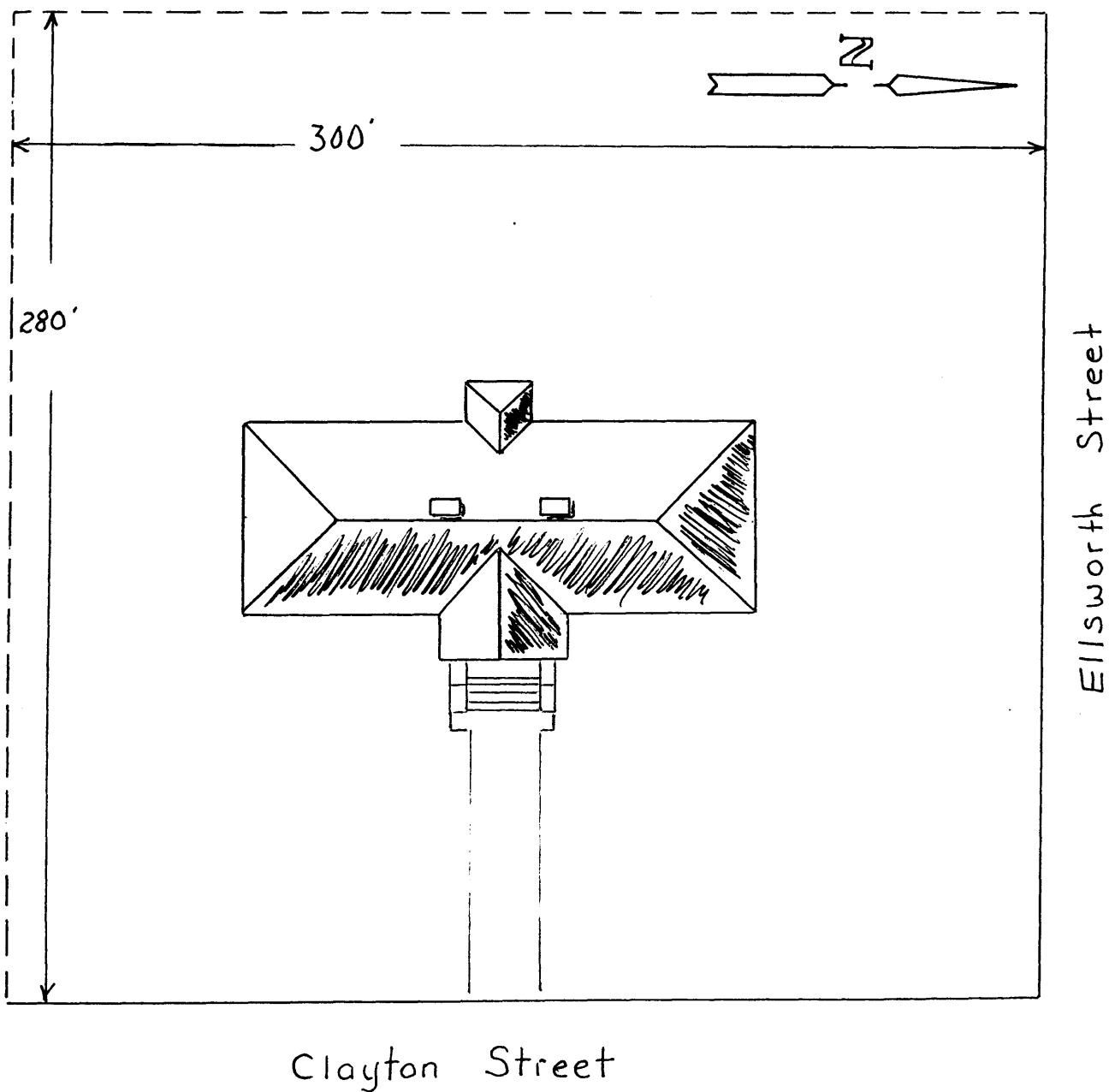
United States Department of the Interior
National Park Service

National Register of Historic Places
Continuation Sheet

Section number 7 Page 2

Knearl School
Morgan County, Colorado

Site Plan



Not to Scale

**United States Department of the Interior
National Park Service**

**National Register of Historic Places
Continuation Sheet**

Section number 7 Page 3

Knearl School
Morgan County, Colorado

elevation wall to the north of the stairway extension contains two boarded-over basement windows. There are no upper-story windows on the west elevation.

The main entry opens onto a 9 ft. x 28 ft. central corridor terminating in the west stairwell. Two former classroom spaces open off the main corridor and each measure 28 ft. x 22 ft. The south classroom is now divided into three office spaces and the north classroom is now divided into two large offices. Two small cloakrooms flank each side of the entry door. The lower level contains a single 22 ft. x 20 ft. classroom, two restrooms, a utility area and three small storerooms. The interior walls are painted lath and plaster. Floors in the three classrooms and the central hall are douglas fir boards, sanded, stained and varnished. Original fir moldings remain throughout. Original 4 ft. x 6 ft. blackboards remain in one upper-story classroom and in the lower level classroom. Original wood doors with split-light transoms remain upstairs and original glazed four-panel doors are found throughout the lower level.

The Knearl School is a simple utilitarian building designed by an unknown hand. The brick construction, gently sloped hip roof, wide eaves, front gabled entry, and multi-light over single-light windows give the building a look compatible with the Craftsman style bungalows popular during its period of construction. The understated elegance of the functional symmetrical plan immediately identifies it as a no-nonsense civic structure typical of its time and place.

The building was used as a school until 1971 when the building and land were donated to the City of Brush. The school became part of a city park complex, adjacent to the swimming pool, park area and the Morgan County Fairgrounds. After the city acquired the property, it was rented to the health department and used as offices. During this time the two upper level classrooms were subdivided into several offices with ceiling to floor drywall partitions. The floors were covered with carpeting and floor tiles. Acoustical tile covers much of the original plaster ceiling. Although these alterations remain, current plans are to reverse the interior changes to return the building to its original floor plan for reuse as a museum.

Exterior alterations are minor and consist of the replacement of the original wood soffit and fascia with metal materials in about 1984, the placement of wood panels over the original basement windows, and the replacement of the original main entry door. The Knearl School retains integrity of location, setting, design, materials, workmanship, feeling and association and is fully capable of conveying its significance.

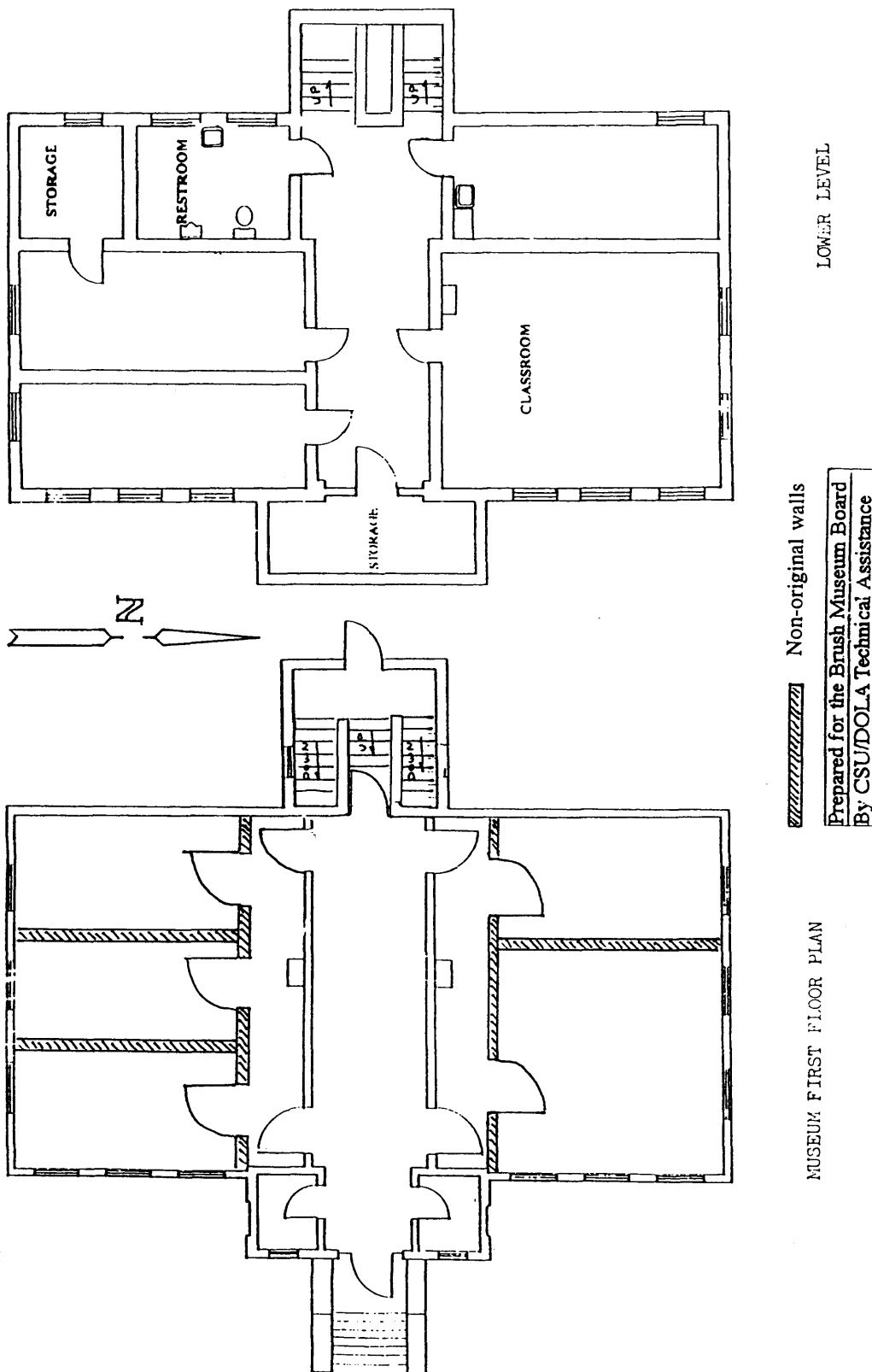
United States Department of the Interior
National Park Service

National Register of Historic Places
Continuation Sheet

Section number 7 Page 4

Knearl School
Morgan County, Colorado

Floor Plan



Knearl School
Name of Property

Morgan County, Colorado
County/State

8. Statement of Significance

Applicable National Register Criteria

(Mark "x" in one or more boxes for the criteria qualifying the property for National Register listing.)

- A** Property is associated with events that have made a significant contribution to the broad patterns of our history.
- B** Property is associated with the lives of persons significant in our past.
- C** Property embodies the distinctive characteristics of a type, period, or method of construction or represents the work of a master, or possesses high artistic values, or represents a significant and distinguishable entity whose components lack individual distinction.
- D** Property has yielded, or is likely to yield, information important in prehistory or history.

Criteria Considerations

(Mark "x" in all the boxes that apply.)

Property is:

- A** owned by a religious institution or used for religious purposes.
- B** removed from its original location.
- C** a birthplace or grave.
- D** a cemetery.
- E** a reconstructed building, object, or structure.
- F** a commemorative property.
- G** less than 50 years of age or achieved significance within the past 50 years.

Narrative Statement of Significance

(Explain the significance of the property on one or more continuation sheets.)

9. Major Bibliographic References

Bibliography

(Cite the books, articles and other sources used in preparing this form on one or more continuation sheets.)

Previous documentation on file (NPS):

- preliminary determination of individual listing (36 CFR 67) has been requested
- previously listed in the National Register
- previously determined eligible by the National Register
- designated a National Historic Landmark
- recorded by Historic American Buildings Survey
- # _____
- recorded by Historic American Engineering Record
- # _____

Areas of Significance

(Enter categories from instructions)

EDUCATION

ARCHITECTURE

Periods of Significance

1911-1946

Significant Dates

N/A

Significant Person(s)

(Complete if Criterion B is marked above.)

N/A

Cultural Affiliation

N/A

Architect/Builder

Unknown

Primary location of additional data:

- State Historic Preservation Office
- Other State Agency
- Federal Agency
- Local Government
- University
- Other

Name of repository:

Colorado Historical Society

United States Department of the Interior
National Park Service

National Register of Historic Places
Continuation Sheet

Section number 8 Page 5

Knearl School
Morgan County, Colorado

SIGNIFICANCE

The 1911 Knearl School is eligible for the National Register under Criterion A in the area of education for its association with the history of elementary education in the Brush community. The district constructed the building to relieve overcrowding in the community's other school. Knearl School primarily offered classes in grades one through three throughout its history. The school served the needs of immigrant families, first Germans from Russia and then Hispanos, who worked the extensive sugar beet fields around Brush. The Knearl School is the oldest surviving school in Brush and operated for 61 years until school consolidation forced its closure.

The school is also eligible under Criterion C for its architectural significance. It is typical of many small, early 20th century civic buildings which combine broad design elements respectful of the popular Craftsman/Bungalow style, symmetrical classical massing, and utilitarian space planning to produce a dignified and functional building.

The local school board constructed the Knearl School in 1911 to ease the strain of overcrowded conditions at Central School, the existing school in Brush. The school was constructed on the south side of town across the railroad tracks and near the county fairgrounds. The school boundaries included the area south of the tracks "to the north line of the Wylie place" and as far east as the county line. During most of its history, teachers in the school's three classrooms taught first, second and third grades. Graduates moved onto the Central School for the continuation of their elementary and secondary education. Central School offered first through third grade classes as well. Very early in its history, Knearl School also taught students through grade six. Knearl school was named for William (Billy) Knearl who was one of Brush's first merchants, postmaster and president of the school board.

The Knearl School primarily served the needs of the community's immigrant sugar beet workers. The first beet workers were Germans from Russia, or Volga Russians, recruited by western sugar beet companies for their experience with sugar beet cultivation in Europe. The Morgan County Construction Company constructed and opened the Brush sugar plant in 1906. The growth of the sugar industry directly corresponded to the population growth in Brush. The town's population went from 997 in 1910 to nearly 2,500 in 1920.

As the early immigrants achieved a degree of financial success, they increasingly established farms of their own or moved on to other occupations. Hispanos from the American southwest and Mexico were recruited to replace them as permanent or migrant beet field laborers. The need for the children to be available to work in the fields necessitated some adjustments in the school calendar. The local newspaper reported near Easter in 1913 that, "so many pupils on the Knearl school leave town early to work in the beet fields that it was deemed advisable by the Board of Education to run that school this week and dismiss a week sooner in May." Some students were unable to rejoin their classmates in school until early November with the completion of the beet harvest.

Families in the southeastern part of Morgan County sent their children to the Knearl School to begin their elementary education. Approximately 100 students attended the school at any one time. Class sizes averaged about 30 students each. Three teachers staffed the school and one also served as

United States Department of the Interior
National Park Service

National Register of Historic Places
Continuation Sheet

Section number 8 & 9 Page 6

Knearl School
Morgan County, Colorado

principal. One of the most important teachers at Knearl was Mellie Fuller. She taught during the years 1922-1948 and also served as the school's principal. Mae Leise also taught and administered at Knearl School from 1915 to 1922. Leise served in the Brush schools until her retirement in 1958.

By 1964 the Knearl School enrollment had dropped to only 30 students. The school continued to operate until consolidation eliminated the need for its services in 1971. Brush's Central School continues to function as a school, although the building suffered a series of fires during its history. The current building dates from the 1930s. The Knearl School is the oldest surviving school building in Brush and is best able to convey the history of elementary education in the community. It is also the school building most closely associated with the families of sugar beet laborers who formed an important part of the economic and social fabric of the area.

Architecturally, the Knearl School is typical of public buildings built during the period. Its brick construction, gently sloped hip roof, broad eaves, front gabled entry, and multi-light over single-light windows give the building a look compatible with the Craftsman style bungalow so popular during its period of construction. The symmetrical plan, evoking the form and dignity of classical design, provides maximum useable space. A raised basement affords greater use of a building's lower level and keeps construction and operation costs to a minimum. The design, imitated by many small early 20th century schools and libraries, immediately identifies the Knearl School as a no-nonsense civic structure typical of its time and place. The lack of exterior alterations affords the school heightened significance as a particularly well preserved local example of a type, period and method of construction.

BIBLIOGRAPHY

Brush News Tribune, Brush, Colorado
October 13, 1911
September 3, 1964
Centennial Issue, January, 1996.

County Republican, Brush, Colorado
July 11, 1911
November 15, 1912
February 14, 1913
March 28, 1913

Friends of East Morgan County. *History of East Morgan County*. 1987.

Stinton, Dale, Brush Museum Board member. Interviewed by Wayne Carlson on May 1, 1996.
Transcript in possession of Wayne Carlson.

Knearl School
Name of Property

Morgan County, Colorado
County/State

10. Geographical Data

Acreage of Property 1.9

UTM References

(Place additional UTM references on a continuation sheet.)

1. 13 617100 4456280
Zone Easting Northing

3. Zone Easting Northing

2. Zone Easting Northing

4. Zone Easting Northing

[] See continuation sheet

Verbal Boundary Description

(Describe the boundaries of the property on a continuation sheet.)

Boundary Justification

(Explain why the boundaries were selected on a continuation sheet.)

11. Form Prepared By

name/title Wayne Carlson

organization Brush Museum Board date 8/20/1996

street & number 308 Applewood Street telephone 970-842-3119

city or town Brush state CO zip code 80723

Additional Documentation

Submit the following items with the completed form:

Continuation Sheets

Maps

A USGS map (7.5 or 15 minute series) indicating the property's location.

A Sketch map for historic districts and properties having large acreage or numerous resources.

Photographs

Representative black and white photographs of the property.

Additional Items

(Check with the SHPO or FPO for any additional items)

Property Owner

(Complete this item at the request of SHPO or FPO.)

name City of Brush

street & number PO Box 363 telephone _____

city or town Brush state CO zip code 80723

Paperwork Reduction Act Statement: This information is being collected for applications to the National Register of Historic Places to nominate properties for listing or determine eligibility for listing, to list properties, and to amend existing listings. Response to this request is required to obtain a benefit in accordance with the National Historic Preservation Act, as amended (16 U.S.C. 470 et seq.).

Estimated Burden Statement: Public reporting burden for this form is estimated to average 18.1 hours per response including time for reviewing instructions, gathering and maintaining data, and completing and reviewing the form. Direct comments regarding this burden estimate or any aspect of this form to the Chief, Administrative Services Division, National Park Service, P.O. Box 37127, Washington, DC 20013-7127; and the Office of Management and Budget, Paperwork Reduction Projects (1024-0018), Washington, DC 20503.

**United States Department of the Interior
National Park Service**

**National Register of Historic Places
Continuation Sheet**

Section number 10 Page 7

Knearl School
Morgan County, Colorado

GEOGRAPHICAL DATA

Verbal Boundary Description

Commencing at the intersection of the West line of Clayton Street with the South line of Ellsworth Street of the Fourth Addition to the Town of Bush, according to the recorded plat thereof, of Block 6 of said Fourth Addition; thence South in the continuation of the West line of said Clayton Street 300 feet; thence West at right angles to said West line 280 feet to intersect the East line of Cameron Street of said Fourth Addition, if the same were produced South; thence North along said produced line 300 feet to intersect the South line of Ellsworth Street; thence East along said line 280 feet to the place of beginning, being located in the E $\frac{1}{2}$ SE $\frac{1}{4}$ of Section 3, Township 4 North, Range 56 West of the 6th P.M.

Boundary Justification

The nominated property includes the entire parcel historically associated with the Knearl School.

**United States Department of the Interior
National Park Service**

**National Register of Historic Places
Continuation Sheet**

Knearl School
Morgan County, Colorado

Section number Additional Documentation Page 8

PHOTOGRAPH LOG

The following information pertains to photographs numbers 1-5 except as noted:

Name of Property: Knearl School
Location: Morgan County, Colo.
Photographer: Wayne Carlson
Date of Photographs: August, 1996
Negatives: Colorado Historical Society, Denver, Colo.

<u>Photo No.</u>	<u>Information</u>
1	East elevation, view to the west.
2	East and north elevation, view to the southwest.
3	West elevation, view to the northeast.
4	South elevation, view to the northeast.
5	East elevation, view to the northwest, ca. 1912. Photographer unknown. Negatives at Brush Museum, Brush Colo.

United States Department of the Interior
National Park Service

National Register of Historic Places
Continuation Sheet

Section number Additional Documentation Page 9

Knearl School
Morgan County, Colorado

USGS TOPOGRAPHIC MAP

Brush East, Colo.
7.5 Minute Quad
Photorevised 1984

