

250

United States Department of the Interior  
National Park Service

National Register of Historic Places  
Registration Form



This form is for use in nominating or requesting determinations for individual properties and districts. See instructions in How to Complete the National Register of Historic Places Registration Form (National Register Bulletin 16A). Complete each item by marking "x" in the appropriate box or by entering the information requested. If any item does not apply to the property being documented, enter "N/A" for "not applicable." For functions, architectural classification, materials, and areas of significance, enter only categories and subcategories from the instructions. Place additional entries and narrative items on continuation sheets (NPS Form 10-900a). Use a typewriter, word processor, or computer, to complete all items.

1. Name of Property

historic name Hammond Pond Parkway (Metropolitan Park System of Greater Boston MPS)

other names/site number \_\_\_\_\_

2. Location

street & number Hammond Pond Parkway n/a not for publication

city or town Brookline and Newton n/a vicinity

state Massachusetts code MA county Norfolk and Middlesex code 021, 017 zip code 02445, 02467

3. State/Federal Agency Certification

As the designated authority under the National Historic Preservation Act of 1986, as amended, I hereby certify that this  nomination  request for determination of eligibility meets the documentation standards for registering properties in the National Register of Historic Places and meets the procedural and professional requirements set forth in 36 CFR Part 60. In my opinion, the property  meets  does not meet the National Register Criteria. I recommend that this property be considered significant  nationally  statewide  locally. ( See continuation sheet for additional comments.)

*Betsy Friedberg, National Register Director*

*2/10/04*

Signature of certifying official/Title Cara H. Metz, State Historic Preservation Officer  
Massachusetts Historical Commission

Date

State or Federal agency and bureau

In my opinion, the property  meets  does not meet the National Register criteria. ( See continuation sheet for additional Comments.)

Signature of certifying official/Title

Date

State or Federal agency and bureau

4. National Park Service Certification

I, hereby certify that this property is:  
 entered in the National Register  
 See continuation sheet.  
 determined eligible for the National Register  
 See continuation sheet.  
 determined not eligible for the National Register  
 removed from the National Register  
 other (explain): \_\_\_\_\_

Signature of the Keeper

*for Edson H. Beall*

Date of Action

*3/18/04*

Hammond Pond Parkway  
Name of Property

Norfolk, Middlesex, MA  
County and State

**5. Classification**

**Ownership of Property**

(Check as many boxes as apply)

(Check only one box)

- private
- public-local
- public-State
- public-Federal

- building(s)
- district
- site
- structure
- object

**Number of Resources within Property**

(Do not include previously listed resources in the count.)

Contributing	Noncontributing	
		_____ building
		_____ sites
5		_____ structures
		_____ objects
5		_____ Total

**Name of related multiple property listing**

(Enter "N/A" if property is not part of a multiple property listing.)

Metropolitan Park System of Greater Boston

**Number of contributing resources previously listed in the National Register**

0

**6. Function or Use**

**Historic Functions**

(Enter categories from instructions)

RECREATION/CULTURE: outdoor recreation

LANDSCAPE: park, natural feature, conservation area

TRANSPORTATION: road-related

**Current Functions**

(Enter categories from instructions)

RECREATION/CULTURE: outdoor recreation

LANDSCAPE: park, natural feature, conservation area

TRANSPORTATION: road-related

**7. Description**

**Architectural Classification**

(Enter categories from instructions)

N/A

**Materials**

(Enter categories from instructions)

foundation N/A

walls N/A

roof N/A

other N/A

**Narrative Description**

(Describe the historic and current condition of the property on one or more continuation sheets.)

United States Department of the Interior  
National Park Service

**National Register of Historic Places**  
**Continuation Sheet**      Hammond Pond Parkway  
Metropolitan Park System of Greater Boston MPS  
Brookline/Newton (Norfolk/Middlesex), MA

Section number   7        Page   1  

---

**DESCRIPTION**

Hammond Pond Parkway extends for approximately 1.75 miles through Newton (Middlesex County) and Brookline (Norfolk County), Massachusetts. It is an undivided, connecting parkway, two lanes wide in either direction, in Boston's regional park system administered by the former Metropolitan District Commission (MDC). (In July 2003, the MDC was reorganized as the Division of Urban Parks and Recreation within the newly created Department of Conservation and Recreation [DCR].) The heavily traveled parkway passes through a setting that includes a medium-density suburban residential neighborhood, and parkland associated with the Hammond Pond Reservation, a DCR-owned wooded parkland, at its northwestern end. At its northern terminus, the Hammond Pond Parkway connects with Beacon Street, a major east-west artery. The southern terminus of Hammond Pond Parkway is the Horace James Memorial Circle, a rotary located in Brookline at the junction of Hammond Street, LaGrange Street, Newton Street, West Roxbury Parkway, and the parkway itself. Hammond Pond Parkway provides a connection for residents of Boston, Newton, and Brookline to the Stony Brook Reservation to the south and parks such as the Arnold Arboretum, Franklin Park, and the Emerald Necklace to the southeast. Hammond Pond Parkway is described from the northwest to the southeast, generally the historical order of its development.

**Hammond Pond Parkway (#1 on the data sheet)** is generally a four-lane asphalt roadway, two lanes in each direction, that curves and slopes with the contours of the surrounding topography. The roadway begins at Beacon Street where there are two small turf miters (**Beacon Street Miters, #2 on the data sheet**) edged in granite that direct traffic from one roadway to another. At its northern end in Newton, the state-owned Webster Conservation Area and the Hammond Pond Reservation border the parkway on both sides. Dense forest and the occasional stone outcrops frame views along the roadway and shelter the nearby Hammond Pond, located to the east, from the roadway viewshed. (photo #1) The parkway, which generally travels at an elevation of 180 to 190 feet above sea level, gently slopes through the adjoining parklands until it reaches the **Former Boston and Albany Railroad Bridge (early 20<sup>th</sup> c., #3 on the data sheet)** and crosses the MBTA commuter rail. The Former Boston and Albany Railroad Bridge is a single-arch cast-concrete bridge that is an integral part of the roadway design and is considered a contributing element to the parkway. (photo #2) After passing over the commuter rail, the parkway continues to pass through the natural setting of the Hammond Pond Reservation. This portion of the parkway is bounded by granite curbs and intermittent dirt and gravel walkways. There is no parking on either side of the roadway. Lighting consists of modern cobra-head lights on concrete posts. Throughout the parkland area, barriers consisting of a mix of rustic wooden fences and metal SS-type barriers prevent intrusions into the surrounding area.

(continued)

United States Department of the Interior  
National Park Service

**National Register of Historic Places**  
**Continuation Sheet**      Hammond Pond Parkway  
Metropolitan Park System of Greater Boston MPS  
Brookline/Newton (Norfolk/Middlesex), MA

Section number   7        Page   2  

---

As the parkway approaches its midpoint, it passes under the **Boylston Street Overpass (ca. 1932, #4 on the data sheet)**, a double-arch, granite bridge that is considered a contributing resource to the parkway. While the configuration of the parkway remains much the same as that described above, the setting of the roadway changes. (photo #3) The ca. 1970 Chestnut Hill Mall is located immediately to the west of the roadway on land that was sold to the shopping development from the Hammond Pond Reservation. A more recent and similar shopping complex borders the east side of the roadway as well. As the roadway passes into Brookline from Newton shortly after passing under the Boylston Street Overpass, the roadway is bordered on both sides by several modern condominium developments and two- to six-story-tall apartment buildings. Asphalt sidewalks here bound the outer edges of the parkway instead of the dirt paths seen northeast of Boylston Street. This setting gives way to a mix of twentieth-century civic and residential development. After Heath Street, the sidewalks cease entirely, and views along the roadway open up to sweeping lawns and large-scale 20<sup>th</sup> century residences in a variety of styles, set back from and above the parkway. The overall effect is parklike as the parkway curves and slopes through the suburban-residential setting. The configuration of the parkway itself is consistent with the previous sections.

As the roadway approaches the junction of Newton Street, LaGrange Street, West Roxbury Parkway, and Hammond Street, traffic is directed around a rotary that dates to the early development of the parkway. This rotary, the **Horace James Memorial Circle (#5 on the data sheet)**, is 50 feet in diameter, and is covered in turf and landscaped with a few scattered trees. While no specific construction date for the rotary has been determined, it is mentioned in early MDC Annual Reports. The Horace James Memorial Circle rotary is considered a contributing element in the Hammond Pond Parkway nomination. This rotary marks the southern terminus of the parkway.

#### **Archaeological Description**

The Hammond Pond Parkway is located in an area where several ancient Native American sites have been identified including eight found in the general area (within one mile) and at least one site, the Hammond Woods Site (19-MD-179), that may have originally extended into the right-of-way. Most of the parkway north of Boylston Street is included in the Hammond Woods Site, also part of the Hammond Pond Reservation. Environmental characteristics indicate a high potential for the presence of ancient Native American sites in many areas of the parkway. The right-of-way intersects several well-drained, level to moderately sloping terraces, knolls and other landforms on close proximity to wetlands. The entire parkway lies within the Charles River drainage including Hammond Pond, Lost Pond and several swamps and streams located within 1000 feet of the right-of-way. Most known sites within the general area are located north of Boylston Street.

(continued)

**United States Department of the Interior  
National Park Service**

**National Register of Historic Places** Hammond Pond Parkway  
**Continuation Sheet** Metropolitan Park System of Greater Boston MPS  
Brookline/Newton (Norfolk/Middlesex), MA

Section number   7   Page   3  

---

In spite of the high potential for the presence of ancient Native American resources in the vicinity of the Hammond Pond Parkway and the possibility that the Hammond Woods site (19-MD-179) originally extended into the right-of-way, the potential for locating significant Native resources within the parkway boundaries established for this nomination is low. The Hammond Pond Parkway includes paved travel lanes, rotaries, bridges, traffic signals, planting strips and sidewalks where they exist or a corridor that extends 10 feet from the current edge of the parkway where the above components are absent. That area that has been impacted by numerous roadway construction and maintenance activities since the parkway was constructed in the 1928 to 1932 period and later 1930's additions and alterations. Grading and paving represent the major impacts within the parkway right-of-way. Construction of the parkway components listed above and subsequent maintenance episodes would have had an adverse effect on any ancient Native American resources that may have been located in the parkway right-of-way. Fragmented portions of archaeological sites including deeply buried artifact concentrations and truncated features may survive within the right-of-way; however, it is doubtful NR eligible sites survive. Known sites that existed within or extended into the parkway right-of-way have been essentially destroyed.

The potential for locating significant historical archaeological sites within the parkway right-of-way is also low. Historic period settlement has been identified in the Brookline and Newton locale since the 17<sup>th</sup> century indicating the potential for locating historic archaeological sites from that period and later. In general, however, detailed historical research is lacking for the for the parkway route making it difficult to predict the locations of specific sites.

Given the same impacts associated with construction of the parkways described for ancient Native American resources, the potential for recovering intact and significant historical archaeological resources is also low within the parkway right-of-way. Roadway construction has also destroyed potential historical archaeological resources within the parkway area. Truncated features and/or deeply buried fragments of sites may survive but the overall integrity of these sites has been compromised.

(end)

Hammond Pond Parkway

Name of Property

Middlesex, Norfolk, MA

County and State

**8. Statement of Significance**

**Applicable National Register Criteria**

(Mark "x" in one or more boxes for the criteria qualifying the property for National Register listing.)

- A** Property is associated with events that have made a significant contribution to the broad patterns of our history.
- B** Property is associated with the lives of persons significant in our past.
- C** Property embodies the distinctive characteristics of a type, period, or method of construction or represents the work of a master, or possesses high artistic values, or represents a significant and distinguishable entity whose components lack individual distinction.
- D** Property has yielded, or is likely to yield, information important in prehistory or history.

**Criteria Considerations**

(Mark "x" in all the boxes that apply.)

Property is:

- A** owned by religious institution or used for religious purposes.
- B** removed from its original location.
- C** a birthplace or grave.
- D** a cemetery.
- E** a reconstructed building, object, or structure.
- F** a commemorative property.
- G** less than 50 years of age or achieved significance within the past 50 years.

**Narrative Statement of Significance**

(Explain the significance of the property on one or more continuation sheets.)

**9. Major Bibliographical References**

(Cite the books, articles, and other sources used in preparing this form on one or more continuation sheets.)

**Previous documentation on file (NPS):**

- preliminary determination of individual listing (36 CFR 67) has been requested
- previously listed in the National Register
- previously determined eligible by the National Register
- designated a National Historic Landmark
- recorded by Historic American Buildings Survey # \_\_\_\_\_
- recorded by Historic American Engineering Record # \_\_\_\_\_

**Areas of Significance**

(Enter categories from instructions)

- Community Planning & Development
- Conservation
- Engineering
- Landscape Architecture
- Transportation
- \_\_\_\_\_
- \_\_\_\_\_
- \_\_\_\_\_

**Period of Significance**

1913-1956

**Significant Dates**

Parkway constructed: 1928-1932

**Significant Person**

(Complete if Criterion B is marked above)

**Cultural Affiliation**

**Architect/Builder**

Charles Eliot Olmsted Brothers

**Primary location of additional data:**

- State Historic Preservation Office
  - Other State agency
  - Federal agency
  - Local government
  - University
  - Other
- Name of repository:  
MDC Mass. DCR: Urban Parks & Recreation



**United States Department of the Interior  
National Park Service**

**National Register of Historic Places  
Continuation Sheet**

**Hammond Pond Parkway  
Metropolitan Park System of Greater Boston MPS  
Brookline/Newton (Norfolk/Middlesex), MA**

Section number 8 Page 2

---

Street in West Roxbury. The bid to construct the parkway was won by the M. McDonough Company. The total cost to build the parkway amounted to \$216,280.13. The project was completed \$5,579.63 over budget.

Significant changes related to the parkway were limited after the parkway opened in 1932. Additions and alterations included some landscape planting in 1935, as well as the removal, in 1936, of ledges and outcrops that were considered "unsightly" and a motorist hazard. The removal of these rocks occurred primarily where parkland from Hammond Pond Parkway abutted the roadway. In 1937, the Works Progress Administration (WPA) made improvements to both the reservation and the parkway. By 1938, the WPA had constructed five-foot-wide peastone-and-dust walks and ten-foot-wide planting strips along the parkway between Newton Street and Boylston Street. Changes over the next 34 years were limited to the occasional resurfacing and minor road maintenance.

In the early 1970s, a large land transfer was made from the former MDC to Chestnut Hill Towers Inc. to make way for the construction of the Chestnut Hill Mall just west of Boylston Street. This change had little impact on the integrity of the parkway itself.

Certain structural features of the parkway—including the Horace James Circle, the Boylston Street Overpass, and the Boston and Albany Railroad Bridge—are all mentioned in early 20<sup>th</sup>-century MDC Annual Reports, making it clear that these features all pre-date 1956, and are therefore considered contributing structures within the present nomination.

(end)

Hammond Pond Parkway  
Name of Property

Middlesex, Norfolk, MA  
County, State

**10. Geographical Data**

**Acreage of Property** ca. 14 acres

**UTM References See continuation sheet.**

(Place additional UTM references on a continuation sheet)

1. 19 Zone	320260 Easting	4688720 (Beacon Street) Northing	3. 19 Zone	321680 Easting	4686280 (James Northing Circle)
2. 19 Zone	320940 Easting	4687500 (Rte. 9, Worcester Tpke.) Northing	4. Zone	Easting	Northing

See continuation sheet

**Verbal Boundary Description**

(Describe the boundaries of the property on a continuation sheet.)

**Boundary Justification**

(Explain why the boundaries were selected on a continuation sheet.)

**11. Form Prepared By**

name/title Public Archaeology Lab. (V. Adams, E. Maass, T. Orwig, S. Berg) with Betsy Friedberg, NR Director, MHC

organization Massachusetts Historical Commission date February 2004

street & number 220 Morrissey Boulevard telephone 617-727-8470

city or town Boston state MA zip code 02125

**Additional Documentation**

**Submit the following items with the completed form:**

**Continuation Sheets**

**Maps**

- A **USGS map** (7.5 or 15 minute series) indicating the property's location.
- A **sketch map** for historic districts and properties having large acreage or numerous resources.

**Photographs**

Representative **black and white photographs** of the property.

**Additional items** (Check with the SHPO or FPO for any additional items)

**Property Owner**

(Complete this item at the request of the SHPO or FPO.)

name Commonwealth of MA. / Dept. Conservation & Recreation / Division of Urban Parks and Recreation

street & number 20 Somerset Street telephone 617-727-5264

city or town Boston state MA zip code 02108

**Paperwork Reduction Act Statement:** This information is being collected for applications to the National Register of Historic Places to nominate properties for listing or determine eligibility for listing, to list properties, and to amend existing listings. Response to this request is required to obtain a benefit in accordance with the National Historic Preservation Act, as amended (16 U.S.C. 470 et seq.).

**Estimated Burden Statement:** Public reporting burden for this form is estimated to average 18.1 hours per response including the time for reviewing instructions, gathering and maintaining data, and completing and reviewing the form. Direct comments regarding this burden estimate or any aspect of this form to the Chief, Administrative Services Division, National Park Service, P.O. Box 37127, Washington, DC 20013-7127; and the Office of Management and Budget, Paperwork Reductions Project (1024-0018), Washington, DC 20503.

United States Department of the Interior  
National Park Service

**National Register of Historic Places** Hammond Pond Parkway  
**Continuation Sheet** Metropolitan Park System of Greater Boston  
Brookline/Newton (Norfolk/Middlesex), MA

Section number 10 Page 1

---

**BOUNDARY DESCRIPTION AND JUSTIFICATION**

The National Register boundary for Hammond Pond Parkway is drawn to encompass property historically and currently associated with the roadway. This includes the parkway corridor and adjacent planting strips and sidewalks, where they exist. Where sidewalks and planting strips do not exist, the nomination includes all the land that extends back ten feet from the current edge of the parkway. The boundary does not include adjacent MDC-owned parkland that is not directly related to the parkway. The specific termini for Hammond Pond Parkway are as follows:

**Hammond Pond Parkway:** The northern terminus of Hammond Pond Parkway corresponds to a line of convenience drawn along the southern edge of Beacon Street in the town of Newton. The southern terminus of the parkway corresponds to a line of convenience drawn around the outer perimeter of the Horace James Memorial Circle rotary in the town of Brookline, at the juncture of the parkway with Hammond Street, LaGrange Street, Newton Street and West Roxbury Parkway, and includes the entire rotary.

(end)

**PHOTOGRAPHS**

Photographer: Emily Maass, PAL

Date: July 2002

Location of negatives: PAL, Pawtucket, RI

1. View looking SE along Parkway through the Hammond Pond Reservation and Webster Conservation Area.
2. View looking NW at Boston & Albany railroad bridge (MBTA Riverside line).
3. View of Boylston Street overpass (MA Route 9) looking N

(end)

**Hammond Pond Parkway  
Brookline and Newton, Massachusetts  
District Data Sheet**

#	NRHP Listed	MHC #	Name	Town	Location	Date	Status	Type
#1			Hammond Pond Parkway	Newton, Brookline	Connecting Parkway located between Beacon Street in Newton and the Horace James Circle Rotary in Brookline	1929-1932	C	Structure
#2			Beacon Street Miters	Newton	Located at the northern terminus of Hammond Pond Parkway at Beacon Street	1930s	C	Structure
#3			Former Boston & Albany Railroad Bridge (MBTA Riverside line)	Newton	Carries the parkway over the railroad tracks south of Beacon Street near the eastern end of the parkway	1930s	C	Structure
#4			Boylston Street Overpass	Newton	Carries Boylston Street over the parkway immediately north of the Newton and Brookline town line	1930s	C	Structure
#5			Horace James Memorial Circle Rotary	Brookline	Located at the parkway's intersection with Hammond Street, LaGrange Street, Newton Street, and West Roxbury Parkway. Marks the southern terminus of Hammond Pond Parkway	1930s	C	Structure

UNITED STATES DEPARTMENT OF THE INTERIOR  
NATIONAL PARK SERVICE

NATIONAL REGISTER OF HISTORIC PLACES  
EVALUATION/RETURN SHEET

REQUESTED ACTION: NOMINATION

PROPERTY NAME: Hammond Pond Parkway

MULTIPLE NAME: Metropolitan Park System of Greater Boston MPS

STATE & COUNTY: MASSACHUSETTS, Norfolk

DATE RECEIVED: 2/16/04      DATE OF PENDING LIST: 3/02/04  
DATE OF 16TH DAY: 3/17/04      DATE OF 45TH DAY: 3/31/04  
DATE OF WEEKLY LIST:

REFERENCE NUMBER: 04000250

REASONS FOR REVIEW:

APPEAL: N DATA PROBLEM: N LANDSCAPE: N LESS THAN 50 YEARS: N  
OTHER: N PDIL: N PERIOD: N PROGRAM UNAPPROVED: N  
REQUEST: N SAMPLE: N SLR DRAFT: N NATIONAL: N

COMMENT WAIVER: N

ACCEPT       RETURN       REJECT      3/18/04 DATE

ABSTRACT/SUMMARY COMMENTS:

Entered in the  
National Register

RECOM./CRITERIA \_\_\_\_\_

REVIEWER \_\_\_\_\_ DISCIPLINE \_\_\_\_\_

TELEPHONE \_\_\_\_\_ DATE \_\_\_\_\_

DOCUMENTATION see attached comments Y/N see attached SLR Y/N

If a nomination is returned to the nominating authority, the nomination is no longer under consideration by the NPS.



Hannond Pond Parkway  
Newton, MA  
#1



Hammond Pond Parkway  
Newton, MA  
#2



Hannond Pond Parkway  
Newton, MA  
#3

**BOSTON SOUTH, MASSACHUSETTS**



① 320260  
4685720  
② 3289440  
4687500  
③ 321680  
4686280

HAMMOND FOND 42071-C1-TM-025  
BOSTON SOUTH, MASSACHUSETTS  
NORFOLK/NORFOLK CO., MA  
1:25 000-scale metric topographic map

7.5 X 15 MINUTE QUADRANGLE SHOWING

- Contours and elevations in meters
- Highways, roads and other manmade structures
- Water features
- Woodland areas
- Geographic names

U.S. GEOLOGICAL SURVEY  
1987

Produced by the United States Geological Survey in cooperation with Massachusetts Department of Public Works  
Control by USGS, NOS/NOAA, and Commonwealth of Massachusetts agencies  
Compiled by photogrammetric methods from aerial photographs taken 1978. Field checked 1979. Map edited 1987. Supersedes Newton and Boston South 1:25,000-scale maps dated 1970.  
Selected hydrographic data compiled from NOS charts 13270 (1982) and 13272 (1982). This information is not intended for navigational purposes.  
Projection and 1980-meter grid: Universal Transverse Mercator, zone 19  
1980-meter grid ticks based on Massachusetts coordinate system, mainland zone  
1927 North American Datum  
To place on the predicted North American Datum 1983, move the projection lines 6 meters south and 32 meters west as shown by dashed corner ticks.  
There may be private subdivisions within the boundaries of the National or State reservations shown on this map.  
CONTOUR INTERVAL 3 METERS  
NATIONAL GEODETIC VERTICAL DATUM OF 1929  
OTHER ELEVATIONS SHOWN TO THE NEAREST 0.1 METER  
OTHER ELEVATIONS SHOWN TO THE NEAREST 0.5 METER  
DEPTH CURVES AND SOUNDINGS IN METERS  
DATUM IS MEAN LOW WATER  
THE RELATIONSHIP BETWEEN THE TWO DATUMS IS VARIABLE  
MEAN HIGH WATER REPRESENTS THE APPROXIMATE LINE OF MEAN HIGH WATER  
THE MEAN RANGE OF TIDE IS APPROXIMATELY 2.5 METERS  
THIS MAP COMPLIES WITH NATIONAL MAP ACCURACY STANDARDS

CONVERSION TABLE		DECLINATION DIAGRAM		ADJOINING MAPS		
Meters	Feet	UTM grid convergence (GN and 1983 magnetic at center of map; Diagram is approximate)		1	2	3
1	3.2808	30° 00' 00" N		4	5	
2	6.5617	30° 00' 00" E		6	7	8
3	9.8425	30° 00' 00" S		1	2	3
4	13.1234	30° 00' 00" W		4	5	6
5	16.4042	30° 00' 00" E		7	8	1
6	19.6850	30° 00' 00" S		2	3	4
7	22.9659	30° 00' 00" W		5	6	7
8	26.2467	30° 00' 00" E		8	9	2
9	29.5275	30° 00' 00" S		3	4	5
10	32.8084	30° 00' 00" W		6	7	8



**Topographic Map Symbols**

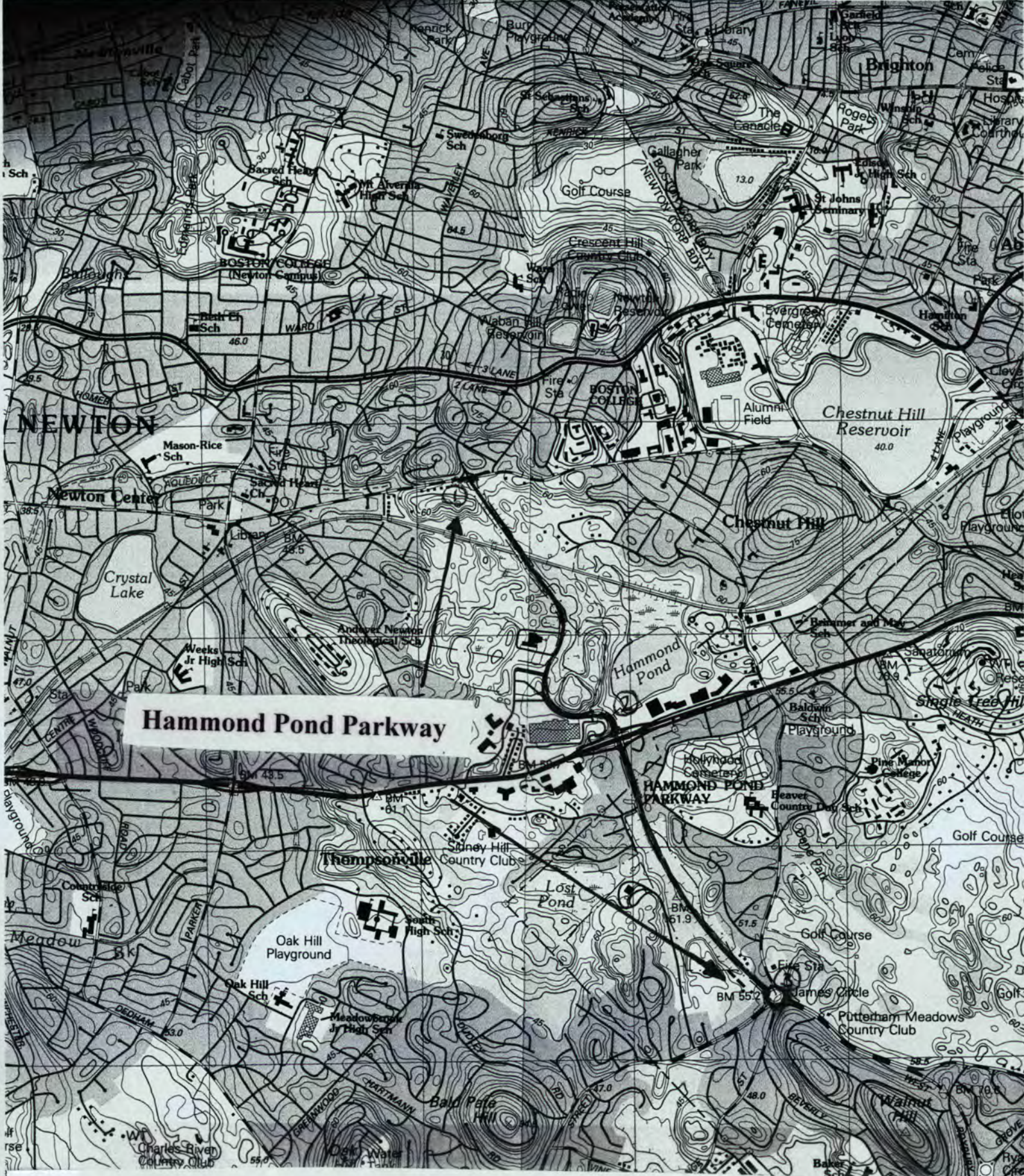
Primary highway, hard surface	.....
Secondary highway, hard surface	.....
Light-duty road, hard or improved surface	.....
Unimproved road, trail	.....
Route marker: Interstate, U. S., State	.....
Railroad: standard gage, narrow gage	.....
Bridge: drawbridge	.....
Footbridge; overpass; underpass	.....
Build-up area: only selected landmark buildings shown	.....
House; barn; church; school; large structure	.....
Boundary	.....
National, with monument	.....
State	.....
County parish	.....
Civil township, precinct, district	.....
Incorporated city, village, town	.....
National or State reservation; small park	.....
Land grant with monument; fossil section	.....
U. S. public lands survey: range, township, section	.....
Range, township, section line: location approximate	.....
Fence or field line	.....
Power transmission line, located tower	.....
Dam; dam with lock	.....
Cemetery; grave	.....
Cenotaph; plume area; U. S. location monument	.....
Wellhead; water well; spring	.....
Mine shaft; prospect; adit or cave	.....
Control: horizontal station; vertical station; spot elevation	.....
Contours: index, intermediate; supplementary; depression	.....
Disturbed surface: strip mine, levee, sand	.....
Soundings: depth curve	.....
Perennial lake and stream; intermittent lake and stream	.....
Repts, large and small; falls, large and small	.....
Submerged marsh; marsh; swamp	.....
Land subject to controlled inundation; woodland	.....
Scrub; mangrove	.....
Orchard; vineyard	.....

A pamphlet describing topographic maps is available on request  
FOR SALE BY U.S. GEOLOGICAL SURVEY  
DENVER, COLORADO 80225, OR RESTON, VIRGINIA 22092  
1987

SCALE 1:25 000  
1 CENTIMETER ON THE MAP REPRESENTS 250 METERS ON THE GROUND  
CONTOUR INTERVAL 3 METERS

MILES 1 2 3 4  
KILOMETERS 1 2 3 4 5 6 7 8 9 10 11 12 13 14 15 16 17 18 19 20

1 KM TO INTERSTATE 95  
2 KM TO INTERSTATE 95  
3 KM TO INTERSTATE 95  
4 KM TO INTERSTATE 95  
5 KM TO INTERSTATE 95  
6 KM TO INTERSTATE 95  
7 KM TO INTERSTATE 95  
8 KM TO INTERSTATE 95  
9 KM TO INTERSTATE 95  
10 KM TO INTERSTATE 95  
11 KM TO INTERSTATE 95  
12 KM TO INTERSTATE 95  
13 KM TO INTERSTATE 95  
14 KM TO INTERSTATE 95  
15 KM TO INTERSTATE 95  
16 KM TO INTERSTATE 95  
17 KM TO INTERSTATE 95  
18 KM TO INTERSTATE 95  
19 KM TO INTERSTATE 95  
20 KM TO INTERSTATE 95

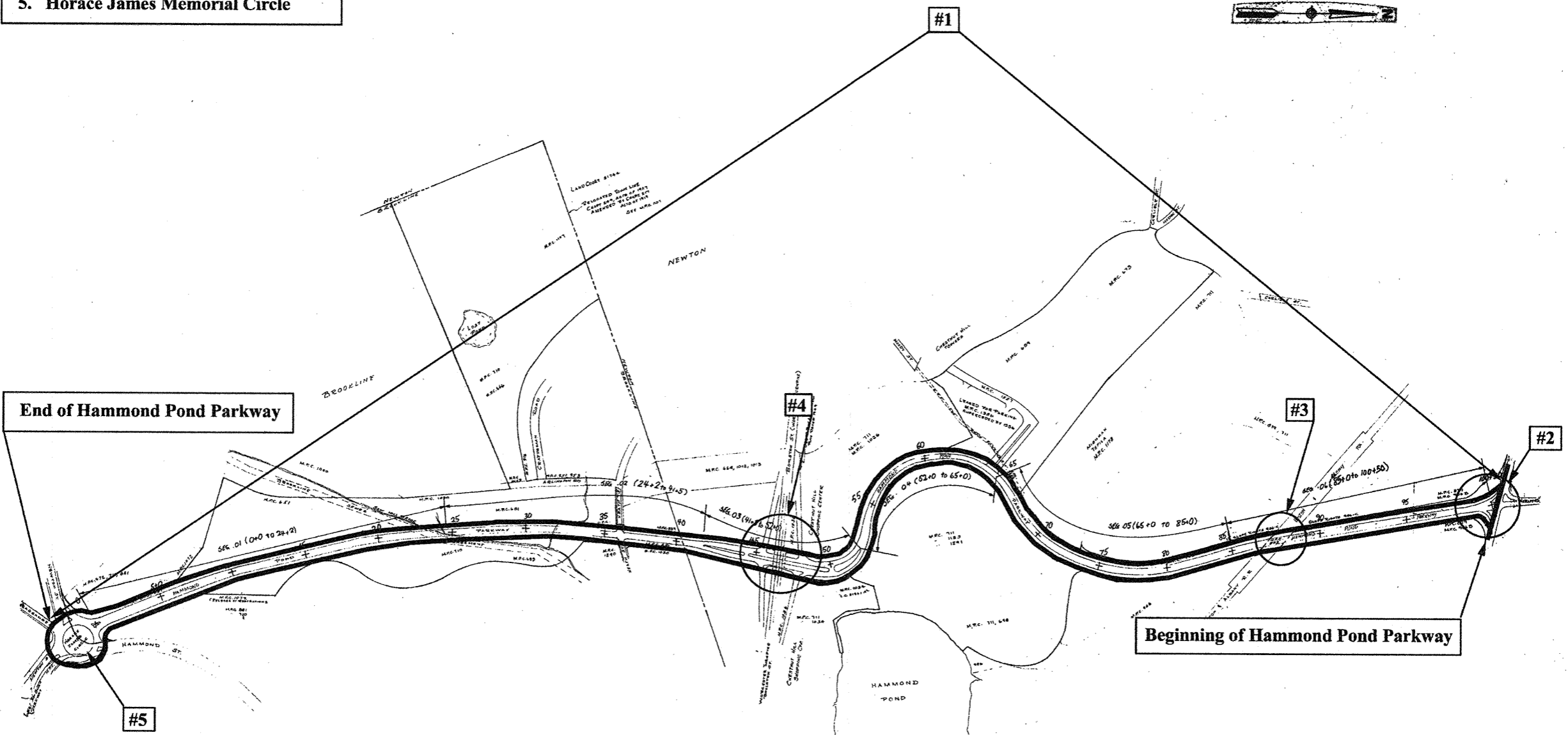


**Hammond Pond Parkway**


Name: BOSTON SOUTH  
February 11, 2004

Caption: Hammond Pond Parkway  
Brookline, Newton, Massachusetts

1. Hammond Pond Parkway
2. Beacon Street Mitters
3. Former Boston and Albany Railroad Bridge
4. Boylston Street Overpass
5. Horace James Memorial Circle



**STATION AND SEGMENT PLAN:  
HAMMOND POND PARKWAY**

COMMONWEALTH OF MASSACHUSETTS METROPOLITAN DISTRICT COMMISSION		
PARKWAY MANAGEMENT SYSTEM - STA. AND SEG. PLAN BLUE HILLS DIVISION		
HAMMOND POND PARKWAY - #701		
 <b>Vanasse/Hangen</b> Consulting Engineers & Planners 60 Birmingham Parkway, Boston, MA 02135 617/783-7000		
DESIGNED BY VAG	DATE APRIL, 1986	DRAWING NO. BH-1
DRAWN BY NBF	SCALE NOT TO SCALE	
CHECKED BY VAG	SHEET OF	JOB NO. 1120



**The Commonwealth of Massachusetts**  
William Francis Galvin, Secretary of the Commonwealth  
Massachusetts Historical Commission

February 6, 2004

Ms. Carol Shull  
National Register of Historic Places  
Department of the Interior  
National Park Service  
1201 Eye Street, NW, 8<sup>th</sup> floor  
Washington, DC 20005

Dear Ms. Shull:

Enclosed please find the following nomination:

Hammond Pond Parkway, Brookline/Newton (Norfolk/Middlesex), MA  
Metropolitan Park System of Greater Boston (Parkways) MPS

The nomination was voted eligible by the State Review Board and been signed by the State Historic Preservation Officer. The owners of the property in the Certified Local Government communities of Brookline and Newton were notified of pending State Review Board consideration 60 to 90 days before the meeting and were afforded the opportunity to comment.

*We request expedited review of this nomination.*

Sincerely,

A handwritten signature in cursive script that reads "Betsy Friedberg".

Betsy Friedberg  
National Register Director  
Massachusetts Historical Commission

enclosure