



GLEN LAKE CHILDREN'S CAMP (DINING HALL)

HENNEPIN CO., MN

013472-3

Dining Hall and Recreation Bldg #1 013472-3  
Glen Lake Children's Camp  
Hennepin County MN

Rolf Anderson

December 1998

Minnesota Historical Society

East



GLEN LAKE CHILDREN'S CAMP (DORMITORY)

HENNEPIN CO., MN

013471-1

Dormitory # 2  
Glen Lake Children's Camp  
Hennepin County MN

013471-1

Rolf Anderson

October 1998

Minnesota Historical Society

West



GLEN LAKE CHILDREN'S CAMP  
HENNEPIN CO., MN

013472-17

Dormitory #2 (left), Lions Den # 8 (center),  
and Birchwood #9 (right) 013472-17

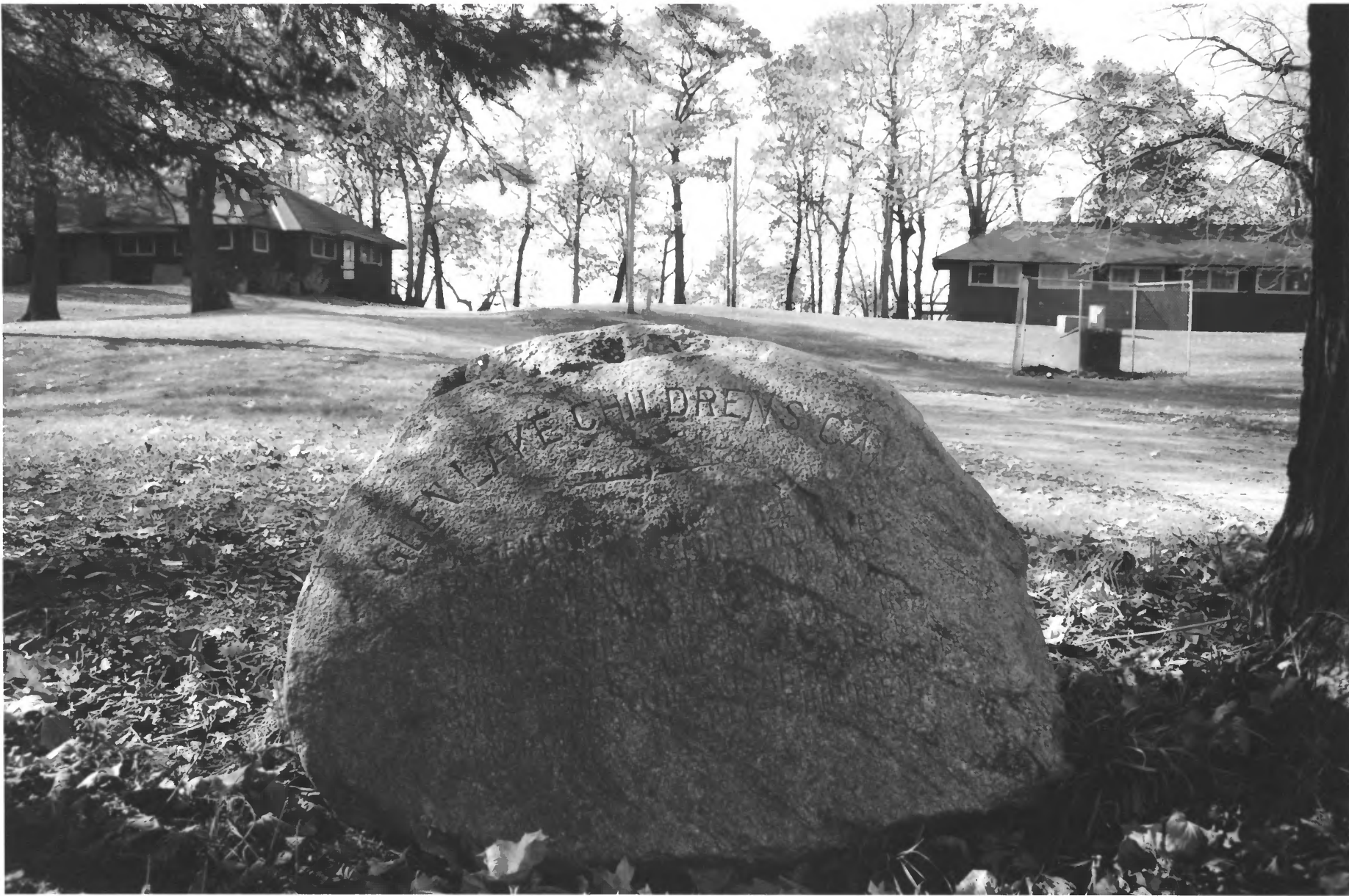
Glen Lake Children's Camp  
Hennepin County, MN

Rolf Anderson

December 1998

Minnesota Historical Society

Northwest



GLEN LAKE CHILDREN'S CAMP (STONE MONUMENT)

HENNEDIN CO., MN

013471-18

Stone Monument #3  
(with Dining Hall (left) #1, and Dormitory (right) #2  
and Road (center) #4

013471-18

Glen Lake Children's Camp  
Hennepin County, MN  
Rd T. Anderson

October 1998

Minnesota Historical Society  
West





GLEN LAKE CHILDREN'S CAMP (GARAGE II, NON-CONTRIBUTING)

HENNEPIN CO., MN

013471-24

Garage II # 6 (Non-contributing)

013471-24

Glen Lake Children's Camp

Hennepin County, MN

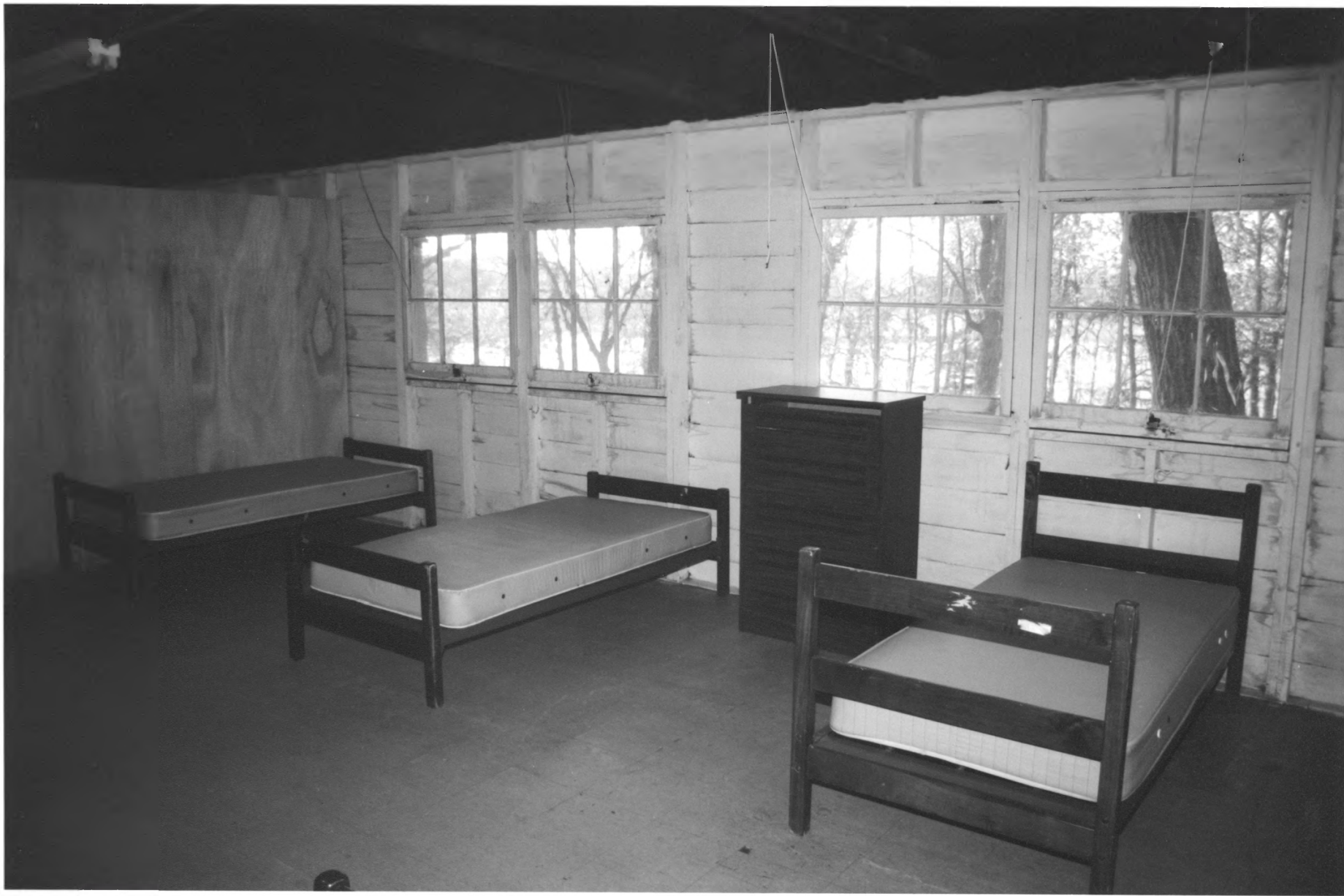
Rolf Anderson

October 1998

Minnesota Historical Society

South

(Boulay House # 7 (non-contributing) is  
shown in the background)



GLEN LAKE CHILDREN'S CAMP (DORMITORY - INTERIOR)

HENNEPIN CO., MN

013471-10

013471-10

Dormitory #2  
Glen Lake Children's Camp  
Hennepin County MN  
Rolf Anderson

October 1998

Minnesota Historical Society

Interior view - north dorm,  
toward the west



GLEN LAKE CHILDREN'S CAMP (GARAGE I)

HENNEPIN CO., MN

013060-13

013060-13

Garage I # 5

Sten Lake Children's Camp

Hennepin County, MN

Rolf T. Anderson

August 1996

Minnesota Historical Society

South



GLEN LAKE CHILDREN'S CAMP (DORMITORY)

HENNEPIN CO., MN

013472-4

013472-4

Dormitory #2

Sten Lake Childrens Camp

Hennepin County MN

Rolf Anderson

December 1998

Minnesota Historical Society

Northeast





GLEN LAKE CHILDREN'S CAMP (DINING HALL - FIRE PLACE)

HENNEPIN CO., MN

013471-7

013471-7

Fireplace

Dining Hall + Recreation Bldg #1

Glen Lake Children's Camp

Hennepin County MN

Rolf Anderson

October 1998

Minnesota Historical Society

North



GLEN LAKE CHILDREN'S CAMP ( DINING HALL - INTERIOR )

HENNEPIN CO., MN

013060-10

Dining Hall + Recreation Bldg #1

013060-10

Interior view

Sten Lake Children's Camp

Hennepin County, MN

August 1996

Rolf Anderson

Minnesota Historical Society

Northwest



GLEN LAKE CHILDREN'S CAMP (DINING HALL; BIRCH ISLAND LAKE)

HENNEPIN CO., MN

013472-22

Dining Hall #1 and Birch Island Lake 13472-22  
Glen Lake Children's Camp  
Hennepin County MN

Rolf Anderson

December 1998

Minnesota Historical Society

Northwest



GLEN LAKE CHILDREN'S CAMP  
HENNEDIN CO., MN  
# 79852

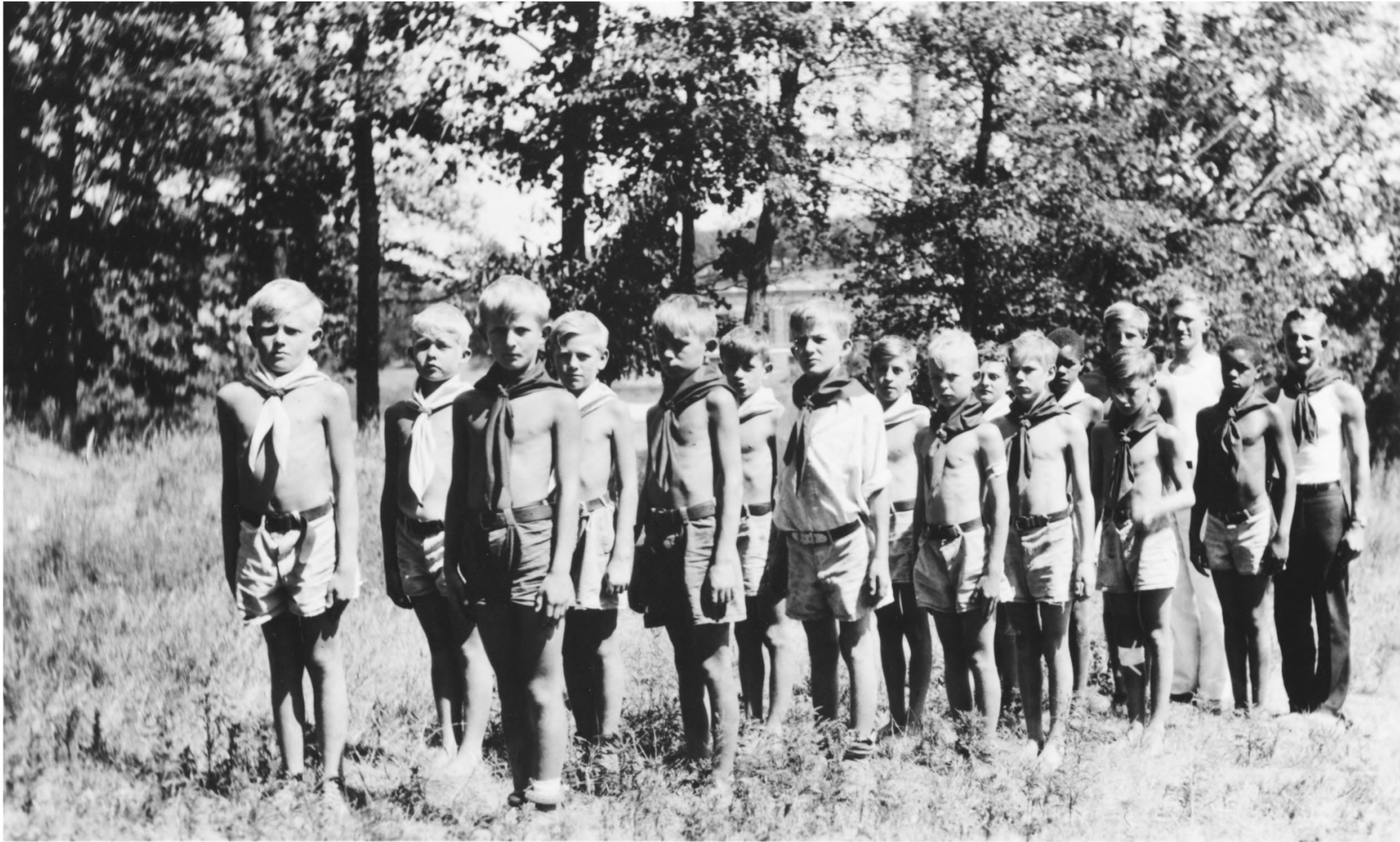
79852

3 children camping.

From MHS Collection 109.H.16.3(B)  
Glen Lake Sanatorium Records -1930s

Glen Lake Childrens Camp  
Hennepin Co. MN





GLEN LAKE CHILDREN'S CAMP  
HENNEPIN CO., MN

79851

79851

Camp Scouts 1930s

From MHS Collection 109.H.16.3(B)  
Glen Lake Sanatorium Records

Glen Lake Childrens Camp  
Hennepin Co.



GLEN LAKE CHILDREN'S CAMP (LEONORA CHRISTIAN)

HENNEPIN CO., MN

# 79648

79648

Leonora Hall Christian  
(Mrs. George Henry)

From the Alonzo H. Beat Portrait Collection,  
ca. 1870-1885. Colln. I. 22.12, page 22.

Glen Lake Children's Camp  
Hennepin County, MN



GLEN LAKE CHILDREN'S CAMP (GEORGE CHRISTIAN)

HENNEPIN CO., MN

# 79445

79445

George Henry Christian

born January 14, 1839 in Alabama. Moved to  
MINNESOTA in January, 1867. Married to  
Leonora Hall on April 23, 1867.  
Photo taken in August, 1916.

Photo by Lee BROTHERS

Glen Lake Children's Camp  
Hennepin County MN



GLEN LAKE CHILDREN'S CAMP

HENNEPIN CO., MN

# 79446

79446

"Mrs. G.C. Christians July 4<sup>th</sup> party at camp."  
(Carolyn McKnight)

From: MN STATE ARCHIVES, Collection 109.H.16.3 (B)  
Glen Lake Sanatorium Records.  
Folder: Children - Groups. 1930's.

Glen Lake Children's Camp  
Hennepin County MN





GLEN LAKE CHILDREN'S CAMP

HENNEPIN CO., MN

79649

"Rest hour at Glen Lake Camp" 1930s

From MN STATE Archives Collection 109.H.16.3(B)  
Glen Lake Sanatorium Records  
Folder: Photos/Children/Portraits - [1930s - 1950s]

Glen Lake Children's Camp  
Hennepin County MN



GLEN LAKE CHILDREN'S CAMP

HENNEPIN CO., MN

#79850

79850

"Fun at the gateway - the place for  
fun from 6:30 - 7:30 p.m."

From MHS Collections 109.H.16.3 (B)  
Glen Lake Sanatorium Records

Glen Lake Children's Camp  
Hennepin Co.



79447

Children seated on ground listen to adult female.

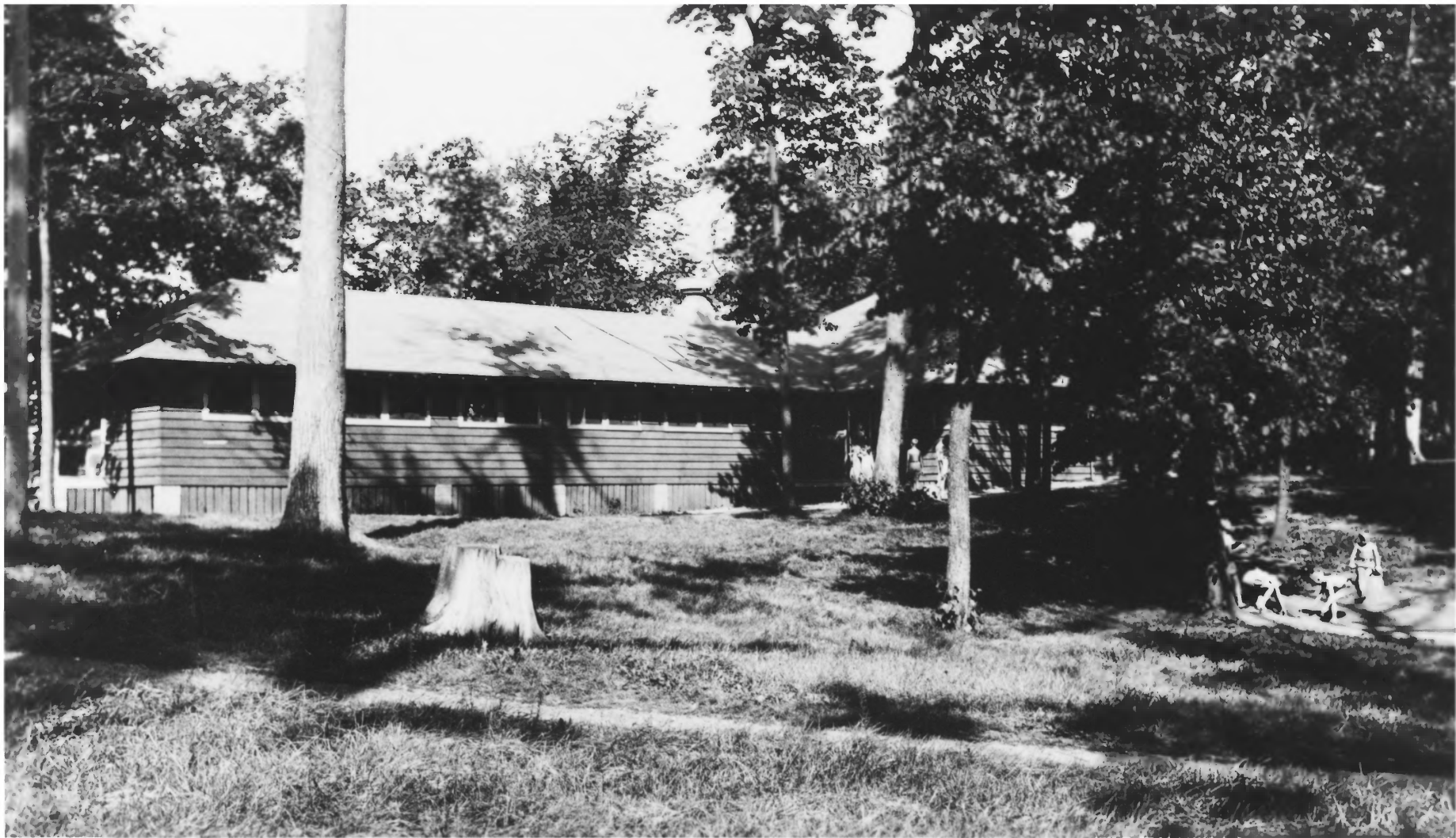
Photo: Freeman-Gross Engraving Co.

From: MN State Archives, Collection 109.H.16.3(B)

Glen Lake Sanatorium Records

Folder: Children-Groups 1930's.

Glen Lake Children's Camp  
Hennepin County MN



GLEN LAKE CHILDREN'S CAMP (DORMITORY)

HENNEPIN CO., MN

#79853

79853

Exterior, Glen Lake, ~~1911~~ - 1930s

From MHS Collection 109.H.16.3(B)  
Glen Lake Sanatorium Records

Glen Lake Children's Camp  
Hennepin Co.





GLEN LAKE CHILDREN'S CAMP (DINING HALL)

HENNEPIN CO., MN

#79854

79854

Exterior - Glen Lake. ~~1917~~ 1930s

From MHS Collection 109.4.16.3 (B)

Glen Lake Sanatorium Records

Dining Hall  
Glen Lake Childrens Camp  
Hennepin Co.



GLEN LAKE  
SANATORIUM

79448

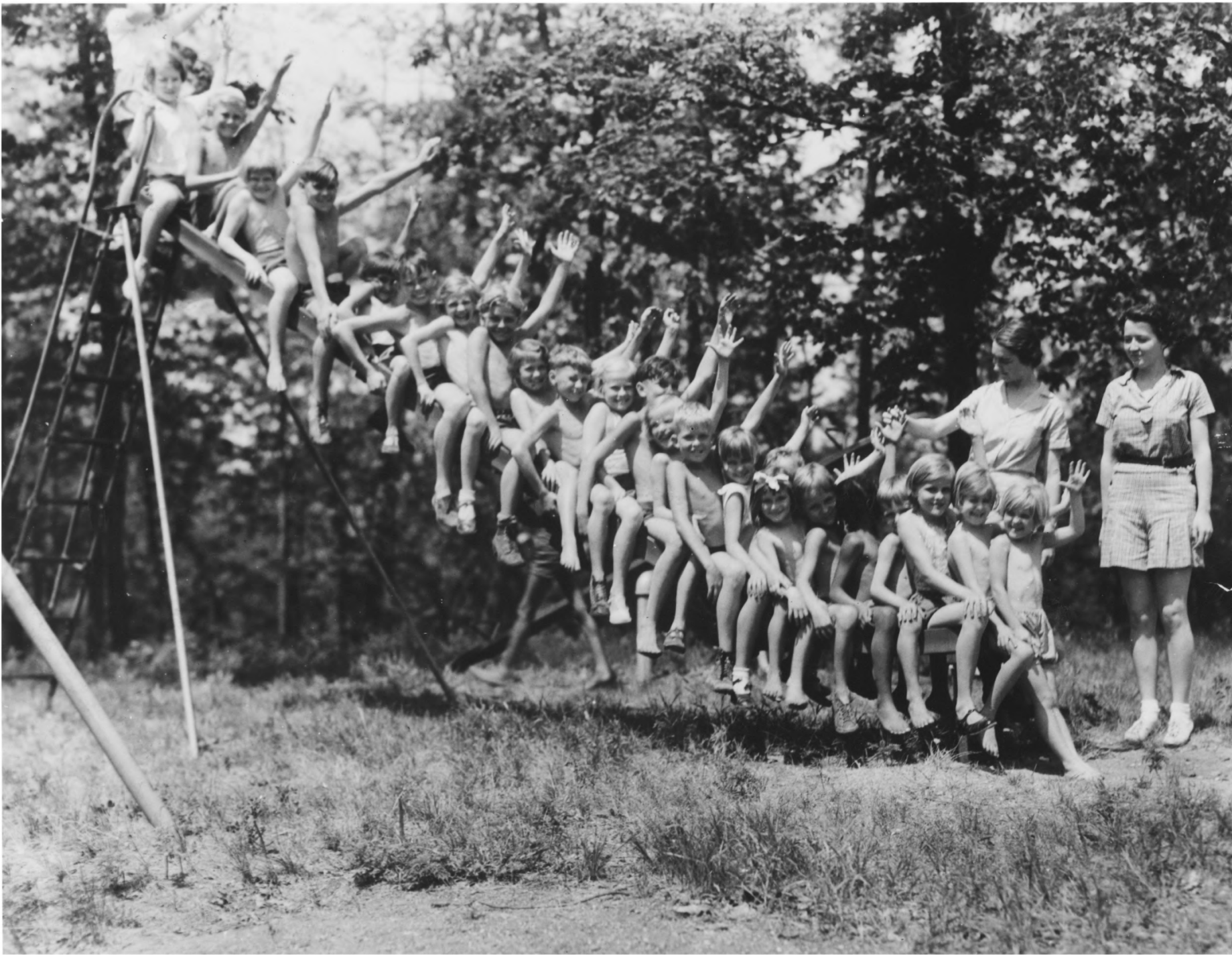
"Truckload of children at summer camp, Glen  
Lake Sanatorium, 1930."

Photo: Freeman-Gross Engraving Co.

From: MN STATE ARCHIVES, Collection 109.H.16.3 (B)

Glen Lake Sanatorium Records

Folder: Children-Groups. 1930's.



79449

Children posed on slide. - 1934

Photo: Bruce Sifford Studio

From: MN STATE ARCHIVES, Collection 109.H.16.3(B)  
Glen Lake Sanatorium Records.

Folder: Children - Groups.