



964

United States Department of the Interior  
National Park Service

NATIONAL REGISTER OF HISTORIC PLACES  
REGISTRATION FORM

This form is for use in nominating or requesting determinations for individual properties and districts. See instructions in How to Complete the National Register of Historic Places Registration Form (National Register Bulletin 16A). Complete each item by marking "x" in the appropriate box or by entering the information requested. If any item does not apply to the property being documented, enter "N/A" for "not applicable." For functions, architectural classification, materials, and areas of significance, enter only categories and subcategories from the instructions. Place additional entries and narrative items on continuation sheets (NPS Form 10-900a). Use a typewriter, word processor, or computer, to complete all items.

1. Name of Property

historic name AUBURNDALE CITY HALL

other names/site number FMSF#PO 4810

2. Location

street & number 1 Bobby Green Plaza N/A  not for publication

city or town Auburndale N/A  vicinity

state Florida code FL county Polk code 105 zip code 33823

3. State/Federal Agency Certification

As the designated authority under the National Historic Preservation Act, as amended, I hereby certify that this  nomination  request for determination of eligibility meets the documentation standards for registering properties in the National Register of Historic Places and meets the procedural and professional requirements set forth in 36 CFR Part 60. In my opinion, the property  meets  does not meet the National Register criteria. I recommend that this property be considered significant  nationally  statewide  locally. ( See continuation sheet for additional comments.)

Barbara C. Mattick/DSHPO 10/29/2013  
Signature of certifying official/Title Date

Florida Department of State, Division of Historical Resources, Bureau of Historic Preservation  
State or Federal agency and bureau

In my opinion, the property  meets  does not meet the National Register criteria. ( See continuation sheet for additional comments.)

\_\_\_\_\_  
Signature of certifying official/Title Date

\_\_\_\_\_  
State or Federal agency and bureau

4. National Park Service Certification

I hereby certify that the property is:

- entered in the National Register  See continuation sheet
- determined eligible for the National Register  See continuation sheet.
- determined not eligible for the National Register  See continuation sheet.
- removed from the National Register.
- other, (explain) \_\_\_\_\_

\_\_\_\_\_  
Signature of the Keeper Date of Action

Edson H. Beall 12.24.13

**5. Classification**

**Ownership of Property**

(Check as many boxes as apply)

- private
- public-local
- public-State
- public-Federal

**Category of Property**

(Check only one box)

- buildings
- district
- site
- structure
- object

**Number of Resources within Property**

(Do not include any previously listed resources in the count)

Contributing	Noncontributing	
1	0	buildings
0	0	sites
0	0	structures
0	0	objects
1	0	total

**Name of related multiple property listings**

(Enter "N/A" if property is not part of a multiple property listing.)

"N/A"

**Number of contributing resources previously listed in the National Register**

0

**6. Function or Use**

**Historic Functions**

(Enter categories from instructions)

GOVERNMENT: City Hall

**Current Functions**

(Enter categories from instructions)

GOVERNMENT: City Hall

**7. Description**

**Architectural Classification**

(Enter categories from instructions)

Late 19<sup>th</sup> & 20<sup>th</sup> Century Revivals: Italian Renaissance

**Materials**

(Enter categories from instructions)

foundation BRICK

walls BRICK

roof ASPHALT

other CAST STONE

**Narrative Description**

(Describe the historic and current condition of the property on one or more continuation sheets.)

**8. Statement of Significance**

**Applicable National Register Criteria**

(Mark "x" in one or more boxes for the criteria qualifying the property for National Register listing.)

- A** Property is associated with events that have made a significant contribution to the broad patterns of our history.
- B** Property is associated with the lives of persons significant in our past.
- C** Property embodies the distinctive characteristics of a type, period, or method of construction or represents the work of a master, or possesses high artistic values, or represents a significant and distinguishable entity whose components lack individual distinction.
- D** Property has yielded, or is likely to yield information important in prehistory or history.

**Criteria Considerations**

(Mark "x" in all the boxes that apply.)

Property is:

- A** owned by a religious institution or used for religious purposes.
- B** removed from its original location.
- C** a birthplace or grave.
- D** a cemetery.
- E** a reconstructed building, object, or structure.
- F** a commemorative property.
- G** less than 50 years of age or achieved significance within the past 50 years

**Narrative Statement of Significance**

(Explain the significance of the property on one or more continuation sheets.)

**9. Major Bibliographical References**

**Bibliography**

Cite the books, articles, and other sources used in preparing this form on one or more continuation sheets.)

**Previous documentation on file (NPS):**

- preliminary determination of individual listing (36 CFR 36) has been requested
- previously listed in the National Register
- previously determined eligible by the National Register
- designated a National Historic Landmark
- recorded by Historic American Buildings Survey  
# \_\_\_\_\_
- recorded by Historic American Engineering Record

**Areas of Significance**

(Enter categories from instructions)

ARCHITECTURE

GOVERNMENT

**Period of Significance**

1927 - 1963

**Significant Dates**

1927

**Significant Person**

N/A

**Cultural Affiliation**

N/A

**Architect/Builder**

Buckley, Roland C.

Smith, Paul H.

**Primary location of additional data:**

- State Historic Preservation Office
- Other State Agency
- Federal agency
- Local government
- University
- Other

Name of Repository

# \_\_\_\_\_

Auburndale City Hall  
Name of Property

Polk Co., FL  
County and State

**10. Geographical Data**

**Acreage of Property** 0.266 acres

**UTM References**

(Place additional references on a continuation sheet.)

1	1	7	4	2	2	4	3	5	3	1	0	4	4	9	3
	Zone		Easting					Northing							
2															

3															
	Zone		Easting					Northing							
4															

See continuation sheet

**Verbal Boundary Description**

(Describe the boundaries of the property on a continuation sheet.)

**Boundary Justification**

(Explain why the boundaries were selected on a continuation sheet.)

**11. Form Prepared By**

name/title Amy Palmer/Robert O. Jones, Historic Preservationist

organization Bureau of Historic Preservation date October 2013

street & number 500 South Bronough Street telephone 850-245-6333

city or town Tallahassee state FL zip code 32399-0250

**Additional Documentation**

Submit the following items with the completed form:

**Continuation Sheets**

**Maps**

A **USGS map** (7.5 or 15 minute series) indicating the property's location.

A **Sketch map** for historic districts and properties having large acreage or numerous resources.

**Photographs**

Representative **black and white photographs** of the property.

**Additional items**

(check with the SHPO or FPO for any additional items)

**Property Owner**

(Complete this item at the request of SHPO or FPO.)

name City of Auburndale; attn: Robert R. Green, City Manager

street & number 1 Bobby Green Plaze telephone 83-965-5530

city or town Auburndale state Florida zip code 33823

**Paperwork Reduction Act Statement:** This information is being collected for applications to the National Register of Historic Places to nominate properties for listing or determine eligibility for listing, to list properties, and amend listings. Response to this request is required to obtain a benefit in accordance with the National Historic Preservation Act, as amended (16 U.S.C. 470 et seq.).

**Estimated Burden Statement:** Public reporting burden for this form is estimated to average 18.1 hours per response including time for reviewing instructions, gathering and maintaining data, and completing and reviewing the form. Direct comments regarding this burden estimate or any aspect of this form to the Chief, Administrative Services Division, National Park Service, P.O. Box 37127, Washington, DC 20013-7127; and the Office of Management and Budget, Paperwork Reductions Projects (1024-0018), Washington, DC 20503.



**United States Department of the Interior  
National Park Service**

**NATIONAL REGISTER OF HISTORIC PLACES  
CONTINUATION SHEET**

Section number 7 Page 1 **AUBURNDALE CITY HALL,  
AUBURNDALE, POLK COUNTY,  
FLORIDA**

---

**SUMMARY**

The Auburndale City Hall, built in 1927, is a two-story, symmetrical, yellow brick municipal building constructed in an "L" form with a three-story octagonal belfry at its center. The building is an excellent example of the Italian Renaissance Revival Style applied to a civic office and public-assembly facility. The main entrance is in the first story of the belfry, and is flanked with cast stone engaged square columns. The two equal-length wings have pointed gable parapets, four evenly-spaced, tall windows on each story with pilasters rising between them. The pilasters rise from a wide cast stone belt-course and terminate below the eaves in a cast stone entablature.

**SETTING**

The Auburndale City Hall is in the heart of downtown, adjacent to the city park and the Atlantic Coast Line Railroad to the west. The "L" shaped building is turned southwest to front onto a grass lawn on the corner of East Park Street, Tampa Street, and Orange Street that intersects Tampa Street from the South. The geographically flat city is laid out on an orthogonal street grid. Commercial uses occupy most of the neighboring buildings.

**PHYSICAL DESCRIPTION**

***Exterior***

The Auburndale City Hall, constructed in 1927-1928, of yellow brick, is an outstanding example of the Italian Renaissance Revival Style (Photo #1). The two-story building is symmetrically arranged in an "L" shape, with a three-story octagonal belfry tower located in the corner in the "L." The roof is surfaced with asphalt shingles (originally barrel tiles), and pointed parapets with capstones mark the gable ends. Three-part louvered vents are within the west and south gable ends.

The two wings are identical except for a first-story modification where a fire truck originally was housed in the gable end of the south wing (Photos #2&3). A marble cornerstone is located at the northwest corner of the west wing (Photo #4). The wings have cast stone water tables with beveled tops at the first floor level. Four brick pediments with stepped cast stone bases rise from these water tables at the gable ends, and the two

United States Department of the Interior  
National Park Service

**NATIONAL REGISTER OF HISTORIC PLACES  
CONTINUATION SHEET**

Section number 7 Page 2 **AUBURNDALE CITY HALL,  
AUBURNDALE, POLK COUNTY,  
FLORIDA**

---

main elevations, to stepped cast stone capitals and entablatures at the roof eaves level (Photo #5). Cornices top the entablatures so as to span the pediments and step the entire pediment arrangement forward of the wall plain. Windows are tall 24-light sashes. Two are in each story of the gable ends, and four are in each story of the sides of both wings. Window sills are of cast stone, and the lintels are soldier courses of bricks. What had been a fire truck bay in the building's southeast corner has pilasters that rise to the second story and are capped with stepped caps, a entablature and cornice, before the pilasters continue to the entablature at the second story. The fire truck bay has been in-filled with brick and a single window to match the others. The two gable-end entablatures have inscribed the words "City of Auburndale" in the centers. The opposite sides of both wings are identical to those on the façade.

The main entrance is located in an extended porch in the first story of the tower (Photo #6). Three sides of the octagonal tower extend forward of the attachment to the two wings. The porch is accessed from five concrete steps with a metal handrail in the middle. On either corner of the first steps are ornamental iron lamp posts. The brick porch extends from the side of the tower, and has a recessed single glass and metal door. A cast stone keystone is above the door. Engaged cast stone columns/pilasters on stone bases and topped with Corinthian capitals rise to an entablature that has inscribed "City Hall" in the center. Above the entablature are extended cast stone cornices with arches underneath.

A gently sloping handicapped ramp rises along the western wing of the building and enters a single door that has been inserted into a side of the tower west of the main door. A single window is in the side of the tower east of the main door.

At the second story of the tower, there is a window in each of the three exposed sides. The brickwork at the partially overlapping corners of the octagonal sides draws attention to the seams. On top of the entry extension is what appears to be a faux balcony with brick pedestals faced with short cast stone pilasters and a decorative metal handrail. The central window has a broad stone cornice above it supported by two fluted corner brackets. The second story of the tower rises above the cornice and eaves level of the windows and ends with an elaborate cornice and entablature. The elaborate arcaded cornice is rounded with a frieze-bordered top and bottom, with exposed bands of bricks laid with their corners. The

**United States Department of the Interior  
National Park Service**

**NATIONAL REGISTER OF HISTORIC PLACES  
CONTINUATION SHEET**

Section number 7 Page 3 **AUBURNDALE CITY HALL,  
AUBURNDALE, POLK COUNTY,  
FLORIDA**

---

belfry with eight arched openings rises above the second story of the tower. It is topped with an overlapping octagonal roof with exposed rafters.

The northeast, rear side of the building, has two-story flat-roofed extensions onto both wings, and a one-story flat-roofed extension off of these extensions (Photo #7). These are unadorned elevations, and contain smaller windows.

***Interior***

The main door accesses an octagonal foyer (Photo #8). Each of the eight corners has pilasters with capitals. Broad cornices with crown moldings join wall and ceiling. Two doorways access the two wings. The west wing has a glass door for the public to enter the Community Development/Construction Services section (Photo #9). There are several steps up into the south wing, and the public enters either the Planning Department, an elevator to the second floor, or steps down to the Information Technology section that occupies the north/rear extensions of the building (Photo #10). The second floor also has pilasters in all eight corners, and cornice joining walls and ceiling (Photo #11). The City Commission meeting room is in the west wing (Photo #12), and the City Manager office is in the south wing. Offices are in the second floor of the north/rear extensions. A curving stairway (Photo #13) gives access to the open arched belfry (Photo #14).

**ALTERATIONS**

In 1954, a new municipal building was built across the street which houses the fire department, removing the fire truck from the south wing. The fire truck door was enclosed. A non-historic handicap access ramp was installed along the west wing of the main façade. A window within the tower to the west of the main door was replaced with a door to receive the ramp.

**United States Department of the Interior  
National Park Service**

**NATIONAL REGISTER OF HISTORIC PLACES  
CONTINUATION SHEET**

Section number 8 Page 1 **AUBURNDALE CITY HALL,  
AUBURNDALE, POLK COUNTY,  
FLORIDA**

---

**SUMMARY**

The Auburndale City Hall is nominated to the National Register for local significance under Criteria A and C in the areas of Politics/Government and Architecture. The City Hall continues to serve many public functions, housing the Auburndale City Commission, City Manager, and historically housing the Fire Department, Police Department, Library, and offices for various municipal services. The "L" shaped two-story brick building, is an exceptional example of an Italian Renaissance Revival building.

**HISTORIC CONTEXT**

William Van Fleet and Alfred Parslow, of Chicago, came to Florida to survey a route for the Jacksonville, Tampa, Key West Railroad. The survey was completed in 1880, and by 1883, a section of the railroad was built from Kissimmee to Tampa, running through current day Auburndale. When Van Fleet returned to his home in Chicago, he recommended the Florida climate to a friend, a Mr. Fuller, who was suffering from rheumatism. Fuller and his son, Frank Fuller, went to Gainesville, to register 160 acres each of homestead land around what was then known as Lake Marian, which Fuller named Lake Sanitaria. Lake Sanitaria was later officially named Lake Mariana by the Auburndale Town Council. Son Frank claimed land east and south of the lake. His land was located between Lake Mariana and a lake he named Bessie, after his step-daughter, which is now known as Jessie. His father's land was west of Lake Mariana, between it and Lake Ariana. The Fullers built a hotel, and a community on land between Lake Ariana and Lake Mariana, which they called "Sanitaria."

A Dr. John Patterson had a general store located beside Lake Ariana in Sanitaria. On July 4, 1883, a bar-b-que and barn dance were held by the store at which a reported 200 people attended. In August 1883, a post office was begun in Patterson's store, and the name "Sanitaria," was officially given to the community. Dr. John Patterson is the great-great grandfather of Lawton Major Chiles Jr., Florida's 41<sup>st</sup> Governor, from 1991-1998.

The Fullers requested that the Atlantic Coast railroad place a depot in Sanitaria, but a few years later the depot was placed one mile to the southwest on land given to them by

**United States Department of the Interior  
National Park Service**

**NATIONAL REGISTER OF HISTORIC PLACES  
CONTINUATION SHEET**

Section number        8        Page        2        **AUBURNDALE CITY HALL,  
AUBURNDALE, POLK COUNTY,  
FLORIDA**

---

Hartwell Howard and James Hampton, who platted the original Town of Auburndale, which is the location of current-day Auburndale.

A Major Louis McLain, supervised the construction of this portion of the railroad between Lakes Ariana and Mariana, and built a depot in 1884. He wrote a letter to his friends the Pulsivers, who published the *Boston Herald*, asking for a suggestion as to what to call the Florida depot and location. Mrs. Pulsiver suggested Auburndale since it was her home town in Massachusetts.

The voting precinct stayed at Sanitaria, for not a single dwelling was near the new Auburndale depot. But soon the people of Sanitaria relocated to be near the depot, and commerce developed around the Auburndale depot, including stores, offices, and a saw mill. By the late 1880s, Auburndale was a considerable center of commerce. The cultivation of tomatos in the area, their crating and shipping became a major economic activity.

By 1887, the post office was located in the "Auburndale" depot. A Presbyterian Church, masonic lodge, numerous businesses, a public library, and a public school were present by the 1890s. Road improvements in the form of clay surfacing were accomplished in 1897. In 1903, a Board of Trade was formed, and a "color line" was instituted that disallowed any African American from living within a quarter mile of the depot. In 1911, the entire town burned down, and the Auburndale merchants rebuilt using bricks. In 1912, the State Bank of Auburndale came into being. On November 23, 1913, the entire downtown burned again as a result of dynamite being stored in one of the buildings. The State Bank was the only building to survive the blast but Auburndale slowly came back. Streets were paved. The Auburndale Power and Light Company was formed, as well as a Woman's Club, a Chamber of Commerce, five churches, and additional school buildings. (Hetherington, p.125-130). In 1925, under the direction of city manager D.P. Dunn, the city chose to develop a municipal water plant. Funded by a municipal bond, two wells were dug, pipes were laid, and a water tower built. Over 500 customers were served (Florida Municipal Record, p.17&18). With the expanding population, in 1928, the state legislature incorporated of the Town of Auburndale as the City of Auburndale.



**United States Department of the Interior  
National Park Service**

**NATIONAL REGISTER OF HISTORIC PLACES  
CONTINUATION SHEET**

Section number        8        Page        3        **AUBURNDALE CITY HALL,  
AUBURNDALE, POLK COUNTY,  
FLORIDA**

---

Two rail lines intersected in Auburndale - the Seaboard Air Line and the Atlantic Coast Line. This transportation/shipping opportunity was a service to the agricultural enterprises in the area, of which citrus growing and strawberries were the biggest. The fertile lands between the many lakes produced numerous marketable crops, animals, and ornamental ferns. Four major citrus packing houses kept 2000 people employed during the September to May yearly season. The region produced a major percentage of the citrus consumed in the nation (FMR, "Agriculture," April 1930 p12, 13).

Tourism also contributed to the Auburndale economy; and water sports related to the lakes was a big draw. Lake Ariana was home to the Ariana Yacht Club, which encouraged year-round recreation on the lake. Every year they would sponsor the Thanksgiving Outboard Regatta which drew national class competitors in outboard motor racing. The event featured in newsreels, magazines and newspapers, served as national promotion to the city. (Florida Municipal Record, Dick Pope, "Zip: It's Motor Boating Time in Auburndale" p.9,10).

### **HISTORIC SIGNIFICANCE**

It was in this era of municipal involvement that the City Council on May 3, 1926, voted to build new city offices. Architect Rolland C. Buckley of Lakeland, was hired to design a new city hall. The city purchased the lot for \$6,000. Paul H. Smith, a local Auburndale contractor, built the city hall which was completed in 1928.

The Auburndale city hall contained space for the public assembly of the City Council, and all the offices of the various city services. With a City Council-City Manager form of government, the City Manager had his office in the building, and does to this day. Initially, the first floor was dedicated to the City Clerk, a vault, the City Manager, a waiting room, the Police and Fire Department, and extra space for the formation of a Chamber of Commerce. The second floor held the City Court/City Council Chambers, the public library, and a living room for the fire department. On the south extension of the building was a single bay to house a fire truck. The City had financed the purchase of a fire truck from LaFrance and Foamite Company. The city's volunteer fire department operated out of this portion of the building until 1954, when a new fire department and jail were constructed across the street. The City's first fire truck has been restored and is on

**United States Department of the Interior  
National Park Service**

**NATIONAL REGISTER OF HISTORIC PLACES  
CONTINUATION SHEET**

Section number 8 Page 4 **AUBURNDALE CITY HALL,  
AUBURNDALE, POLK COUNTY,  
FLORIDA**

---

display at the fire station, and used in parades and during Fire Prevention Week for local school children.

In the late 1920's through the 1930's, the town was becoming more involved in civic responsibilities. In 1929, the City Council approved the sale of \$400,000 in bonds for capital projects and concentrated on the pavement of streets and sidewalks. Special assessments were made on platted subdivision lots to repay the bond. The establishment of city water services that had been initiated several years earlier now was managed out of the city hall and continued to be operated out of the city hall until the late 1990's. As the population expanded, additional miles of pipe had to be laid. Expansion of city water services were paid for with bonds, and even with efforts to keep costs to customers low, the city made money.

By this time, at least nine people were on the City's payroll and all of their offices were operated out of the city hall. They included the City Manager, Assistant Clerk and Treasurer, Police Chief and other police officers, Superintendent of Waterworks, Fire Truck Driver, Trash Truck Driver, a Helper on the Trash Truck, and a Janitor. In addition, the City had a financial advisor and an attorney on contract. The duties of each employee were flexible. For example, the fire chief regularly reported his involvement in cleaning up of old groves, mowing and disking ball fields, and grading streets.

As the Florida land value bubble deflated in the late 1920s, several land developers who owned citrus property within the city boundary defaulted. Other citizens as well had difficulty paying property taxes. The City Council took a creative solution to the problem. City Manager D.P. Nunn was an experienced citrus grower. The City took ownership of the groves. Citizens could work caring for the maintenance of the citrus groves for an hourly credit toward their own taxes. They also picked the fruit in season, which on the market brought a profit to the city above the taxes owed. As the economic conditions improved, the well maintained property was sold at a desirable market price. The prominence of the citrus cultivation, packing, and distribution out of Auburndale, cushioned the local economy from the ravages of the Great Depression to a great degree.

The city hall housed the town's library starting in February 1928, when the Woman's Club requested space to house the library on the second floor in what is now the City Manager's

**United States Department of the Interior  
National Park Service**

**NATIONAL REGISTER OF HISTORIC PLACES  
CONTINUATION SHEET**

Section number 8 Page 5 **AUBURNDALE CITY HALL,  
AUBURNDALE, POLK COUNTY,  
FLORIDA**

---

office. The library held 1,500 books. The Woman's Club was granted maintenance funds in May 1929 in the amount of \$200. In 1937, they requested the City to foreclose on 2 lots in the original town plat to build a new library. The City granted their request and then received \$10 for the 2 lots in December of that year from the Woman's Club. The library continued to operate out of the city hall until the new library was built in 1951. It was officially dedicated to the City in 1955.

In 1931, the city council agreed to lease land from Miss Mosel and Mrs. Mary Preston for an airport, "to keep pace with the times" reads a Resolution passed by the Council. The City Council leased the airport land until 1948.

By the early 1940's, the City Council was becoming more involved in the health, welfare, and safety of its citizens. The minutes of the City Council meetings from this era regularly address concerns of livestock and wild dogs roaming the streets, overgrown lots, problems of trash and debris, and subdivision and building regulations. In March of 1941, the City Council adopted zoning regulations and appointed a 5-member Zoning Commission. The zoning ordinance was regularly amended following its adoption to include a zoning appeals board and new uses such as trailer and tourist camps.

The 1950's were a time of general prosperity and growth in Auburndale. At this point in history, the City Council was regularly adopting new codes to address nuisances, regulate businesses and certain occupations, and ensuring the proper growth of the City for its citizenry. The City Council meeting minutes from this era reflect that the City Council addressed many growth issues, such as building regulations for industrial development; new housing subdivisions, funding for water and sewer expansions, levying new taxes on utilities; creating a landfill; purchasing city vehicles, such as police cars; regulating parking and traffic; building and maintaining recreational facilities, such as shuffleboard courts, a beach, and other ballfields; and repairing roads.

It was during the 1950's that the Woman's Club built a new library and moved out of the city hall, and a new municipal building was constructed across the street from city hall to house the fire and police departments. This allowed the City Manager to move to the second floor, where that office is today, and the first floor to house the water and sewer department and the city clerk. Today, the Public Utilities Department and the City Clerk

**United States Department of the Interior  
National Park Service**

**NATIONAL REGISTER OF HISTORIC PLACES  
CONTINUATION SHEET**

Section number        8        Page        6        **AUBURNDALE CITY HALL,  
AUBURNDALE, POLK COUNTY,  
FLORIDA**

---

have their own locations, and the first floor of the city hall houses the Community Development Department and Information Technology.

**ARCHITECTURAL CONTEXT**

The Italian Renaissance Style in late 19<sup>th</sup> and 20<sup>th</sup> century American construction was a second wave of interest in Italian Renaissance architecture. It gained its initial prominent attention with the design of the Villard House in New York City, executed in 1883, by the important architectural firm of McKim, Mead, and White. The style remained popular until the Great Depression, but it never was as popular as Bungalows, Tudor, or Colonial Revival Styles. The style is characterized by symmetrical facades, and low-pitched hip roofs surfaced with barrel tiles. Entrances are frequently recessed with small classical columns or pilasters. Arches are present in doors and windows. The wide overhanging eaves often have decorative brackets. Windows are narrow, giving them an elongated appearance, and the second story windows have less elaborate treatments than first story windows. The rich heritage of Italian construction offered numerous and varied elements that were incorporated into the Italian Renaissance buildings. This rich heritage offered revival architects many options to draw upon to create distinct and personalized buildings. Quoins, classical door surrounds, molded cornices, belt courses, and Roman arches were common.

**ARCHITECTURAL SIGNIFICANCE**

The Auburndale City Hall, constructed in 1927-1928, is an outstanding example of the Italian Renaissance Revival Style applied to a civic office and assembly facility. This local landmark is in the heart of downtown Auburndale, and fronts southwest onto a main thoroughfare, East Park Street. The two-story building is symmetrically arranged in an "L" shape, with a three-story octagonal belfry tower located between the two wings of the "L." The main entrance is located in the first story of the tower. The main entrance and all windows in the two wings are flanked with pilasters that with bases and capitals appear as columns. The pilaster bases rest upon a continuous cast stone water table, belt course. The tops of the pilasters are topped with continuous entablatures and distinct cornices. The three-story octagonal tower with its octagonal roof and open Roman arched belfry is a

**United States Department of the Interior  
National Park Service**

**NATIONAL REGISTER OF HISTORIC PLACES  
CONTINUATION SHEET**

Section number 8 Page 7 **AUBURNDALE CITY HALL,  
AUBURNDALE, POLK COUNTY,  
FLORIDA**

---

defining feature of the City Hall. The elaborate arcaded cornice treatment is derived directly from Romanesque architecture. The level of architectural integrity is very high.



**United States Department of the Interior  
National Park Service**

**NATIONAL REGISTER OF HISTORIC PLACES  
CONTINUATION SHEET**

Section number 9 Page 1 **AUBURNDALE CITY HALL,  
AUBURNDALE, POLK COUNTY,  
FLORIDA**

---

**BIBLIOGRAPHY**

“Auburndale City – Queen of the Ridge,” *Florida Municipal Record*,” April 1930. P.16-18

Auburndale City Commission Meeting, “Ordinance Designation Historic Landmarks,”  
March 9, 1994. (Local designation of City Hall)

The Auburndale News, March 16, 1928 edition.

Auburndale Town Council Meetings, Official Minutes of, Various dates 1929-1963.

Brown, Canter, *In the Midst of All that Makes Life Worth Living: Polk County, Florida, to  
1940*. Tallahassee, Sentry Press, 2001.

Frisbie, Louise K., *Yesterday's Polk County*, Miami: E.A. Seemann Publishing, Inc.,  
1976. P98

Hetherington, M. F., *History of Polk County Florida*, Chuluota, Florida: The Mickler  
House, Publication, reprint 1971.

McAlester, Virginia and Lee, *A Field Guide to American Houses*, New York: Alfred A.  
Knopf, 1986.

Polk County Property Appraiser, search #252811331500001010, 0 Park St.

Scott, Beverly Mercer, Auburndale Historic Preservation Commissioner, author of  
“Footprints in the Past.”

**United States Department of the Interior  
National Park Service**

**NATIONAL REGISTER OF HISTORIC PLACES  
CONTINUATION SHEET**

Section number      10      Page      1      **AUBURNDALE CITY HALL,  
AUBURNDALE, POLK COUNTY,  
FLORIDA**

---

**PHYSICAL BOUNDARY DESCRIPTIONS**

Auburndale PB 1 Pg 26 S10 T28 R25 & S11 T28 R25 BLK A Los 1 & 2  
0.2661 acres  
Parcel # 25 28 11 331500 001010

**BOUNDARY JUSTIFICATION**

The property encompassed by this boundary is historically associated with the Auburndale City Hall.

**United States Department of the Interior  
National Park Service**

**NATIONAL REGISTER OF HISTORIC PLACES  
CONTINUATION SHEET**

Section number      Photos      Page      1      **AUBURNDALE CITY HALL,  
AUBURNDALE, POLK COUNTY,  
FLORIDA**

---

**PHOTOGRAPHIC LIST**

1. Auburndale City Hall, 1 Bobby Green Plaza, Auburndale
2. Polk County, Florida
3. Historic Photograph, State Archives of Florida, *Florida Memory*, Image # PC 0317
4. ca1928
5. Main Façade, looks the same as when built, looking northeast
6. Photo #1 of 14

1. Auburndale City Hall, 1 Bobby Green Plaza, Auburndale
2. Polk County, Florida
3. Amy Palmer
4. September 2013
5. South wing, southeast corner, looking northwest
6. Photo #2 of 14

1. Auburndale City Hall, 1 Bobby Green Plaza, Auburndale
2. Polk County, Florida
3. Historic Photograph, State Archives of Florida, *Florida Memory*, Image # PR 0711
4. ca1928
5. Fire Department and Firemen, southeast corner, looking northeast
6. Photo #3 of 14

1. Auburndale City Hall, 1 Bobby Green Plaza, Auburndale
2. Polk County, Florida
3. Amy Palmer
4. September 2013
5. West wing cornerstone, northwest corner, looking southeast
6. Photo #4 of 14

The information for the remaining photographs is the same as items 1-4, for photo #4.

5. West wing, northwest corner, looking southeast
6. Photo #5 of 14

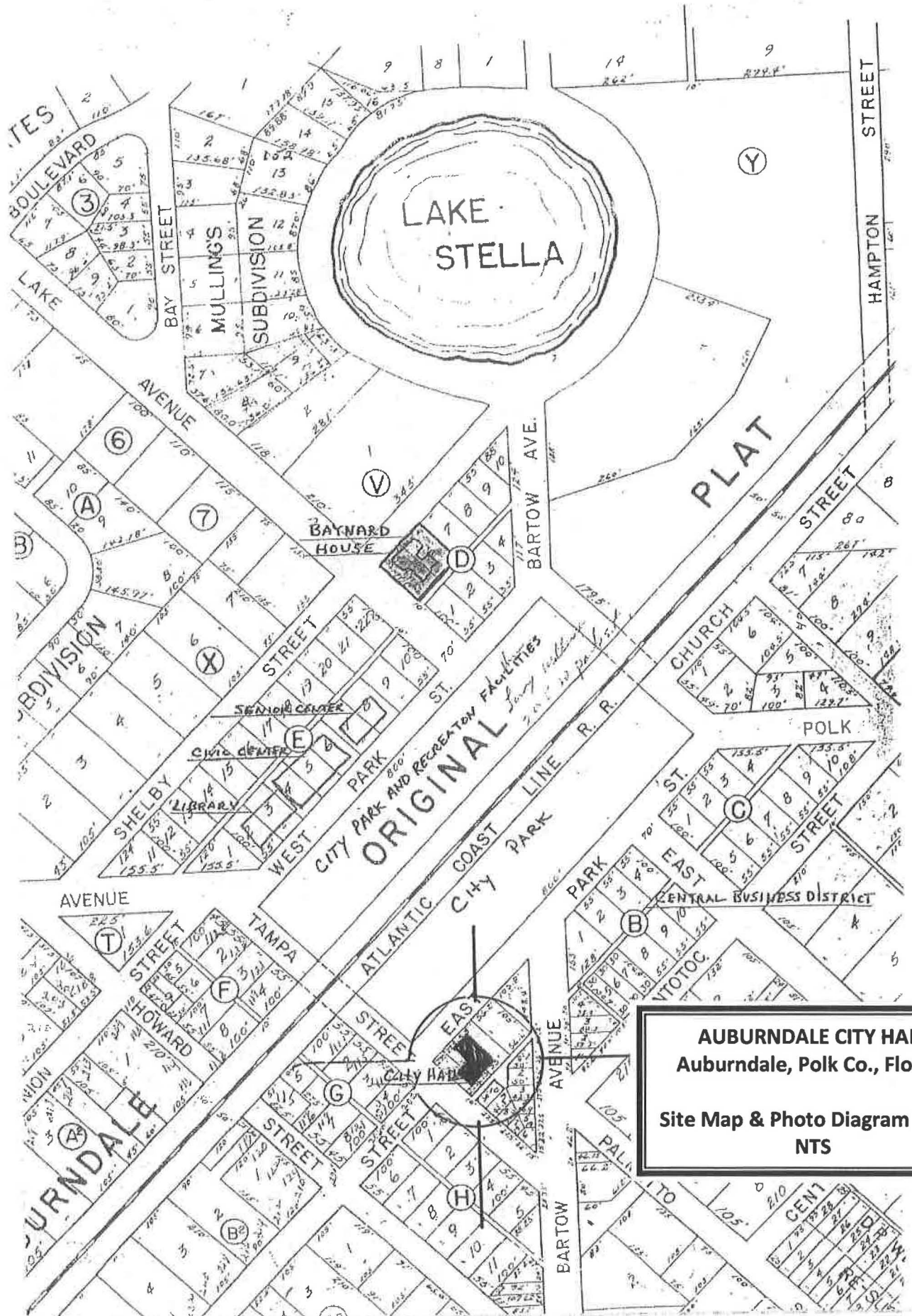
**United States Department of the Interior  
National Park Service**

**NATIONAL REGISTER OF HISTORIC PLACES  
CONTINUATION SHEET**

Section number      Photos      Page      2      **AUBURNDALE CITY HALL,  
AUBURNDALE, POLK COUNTY,  
FLORIDA**

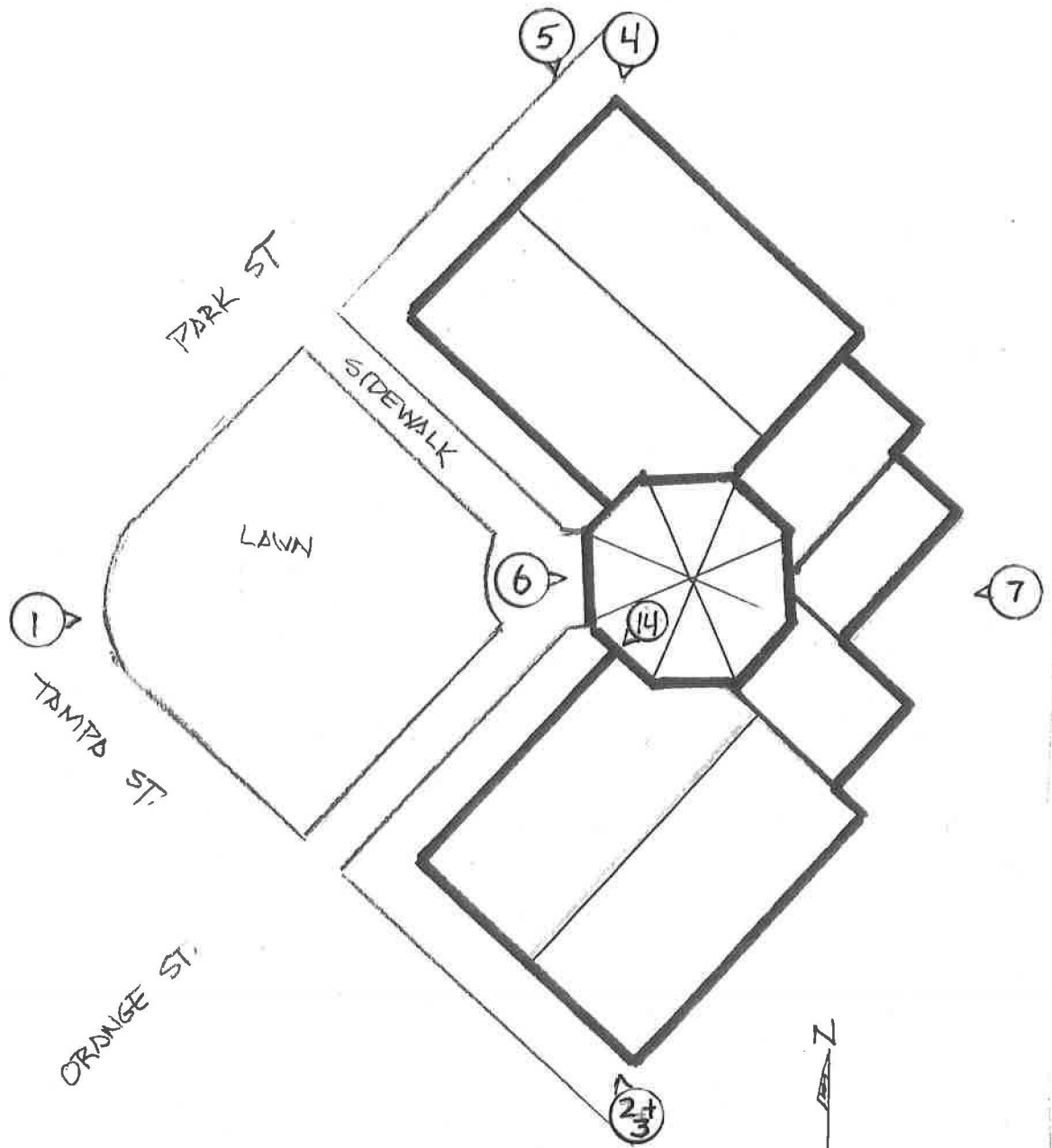
---

- 5. Main entrance and tower, looking northeast
- 6. Photo #6 of 14
  
- 5. Rear, north of building, looking southwest
- 6. Photo #7 of 14
  
- 5. First floor foyer, looking north
- 6. Photo #8 of 14
  
- 5. Community Development section in west wing, looking northwest
- 6. Photo #9 of 14
  
- 5. Information/Technology section, in north portion, looking northwest
- 6. Photo #10 of 14
  
- 5. Second floor foyer, looking toward City Manager, south wing, looking south
- 6. Photo #11 of 14
  
- 5. City Commission assembly room, west wing, looking west
- 6. Photo #12 of 14
  
- 5. Stairway in the tower, looking north
- 6. Photo #13 of 14
  
- 5. Arches at top of tower, looking south
- 6. Photo #14 of 14



**AUBURNDALE CITY HALL**  
 Auburndale, Polk Co., Florida  
**Site Map & Photo Diagram**  
 NTS



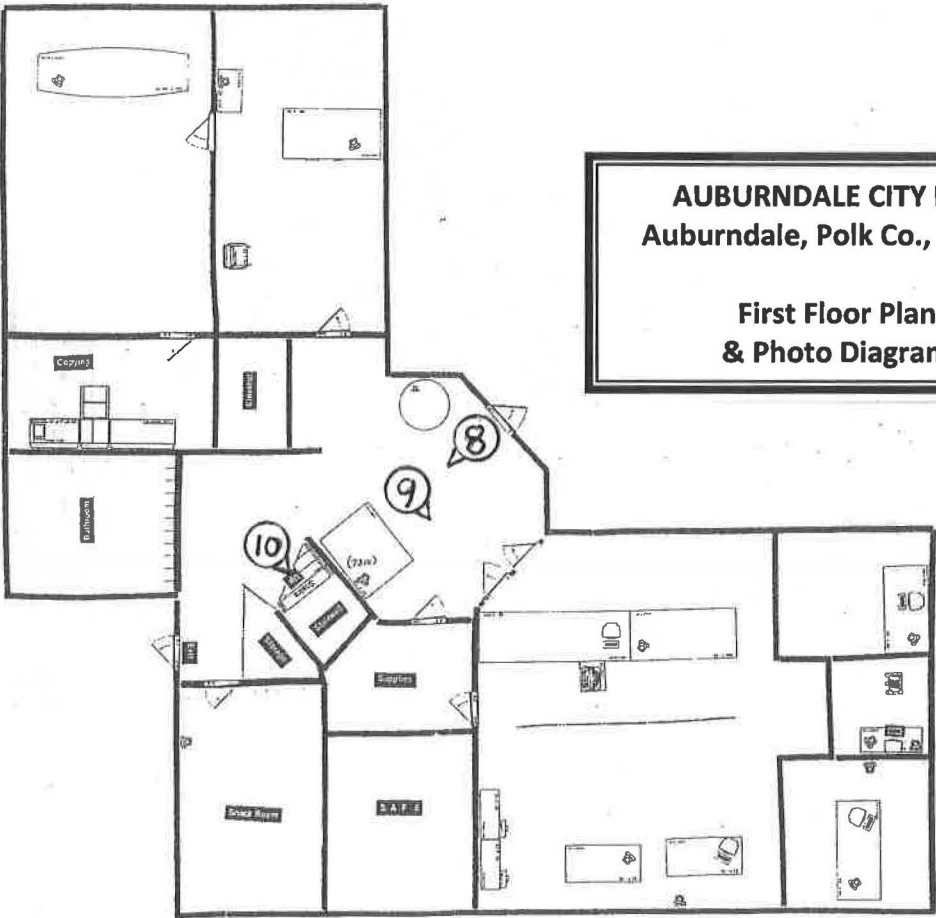


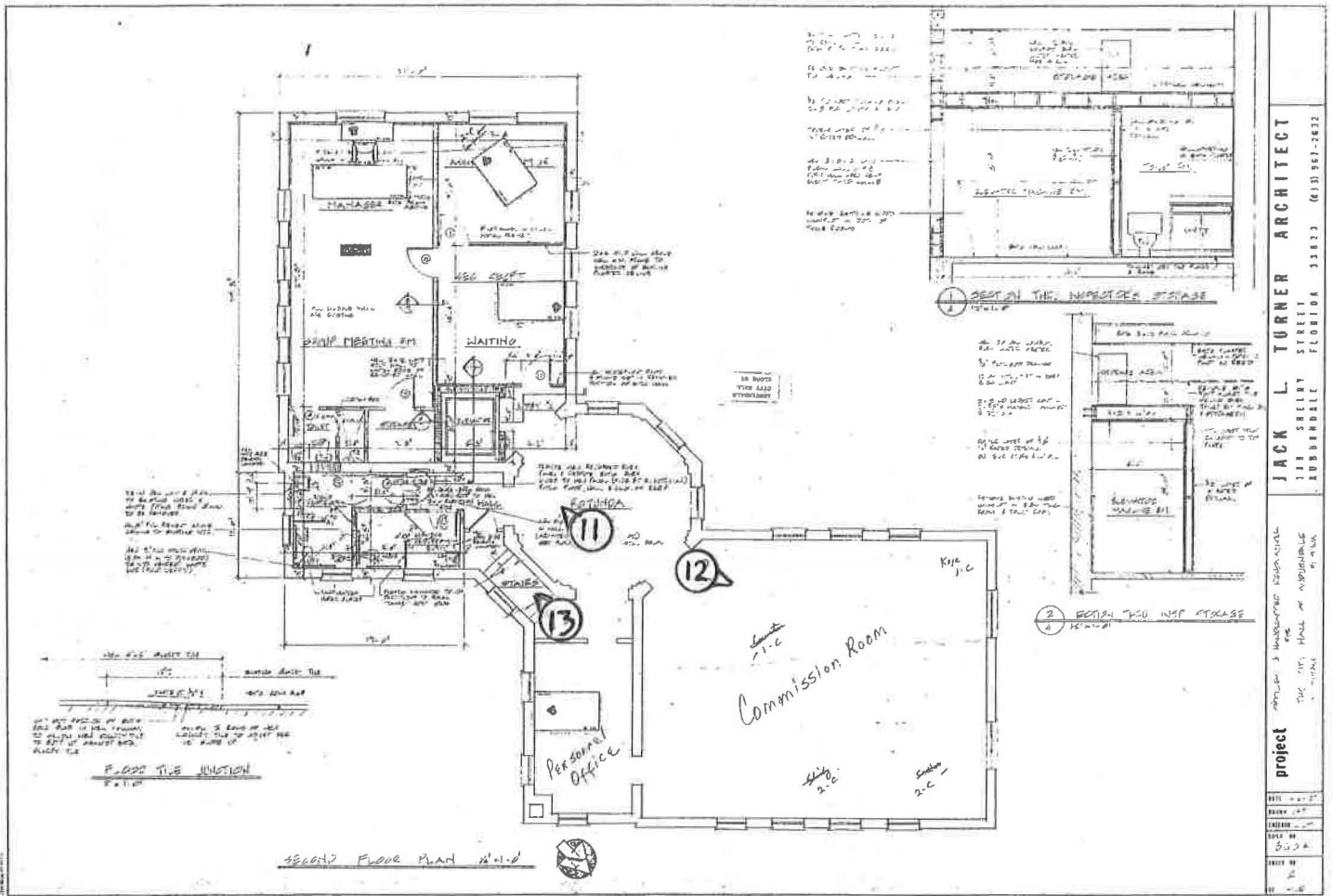
**AUBURNDALE CITY HALL**  
 Auburndale, Polk County, Florida  
  
**Site and Photo Diagram**



**AUBURNDALE CITY HALL**  
Auburndale, Polk Co., Florida

**First Floor Plan**  
**& Photo Diagram**





**JACK L. TURNER ARCHITECT**  
 111 SHREVE STREET  
 AUBURNDALE, FLORIDA 33823 (813) 881-2822

project: AUBURNDALE CITY HALL  
 phase: ARCHITECTURAL  
 date: 5/2/74

DATE	5/2/74
DRAWN BY	JLT
CHECKED BY	JLT
SCALE	AS SHOWN
SHEET NO.	2
TOTAL SHEETS	2

**AUBURNDALE CITY HALL**  
 Auburndale, Polk Co., Florida

**Second Floor Plan  
 & Photo Diagram**





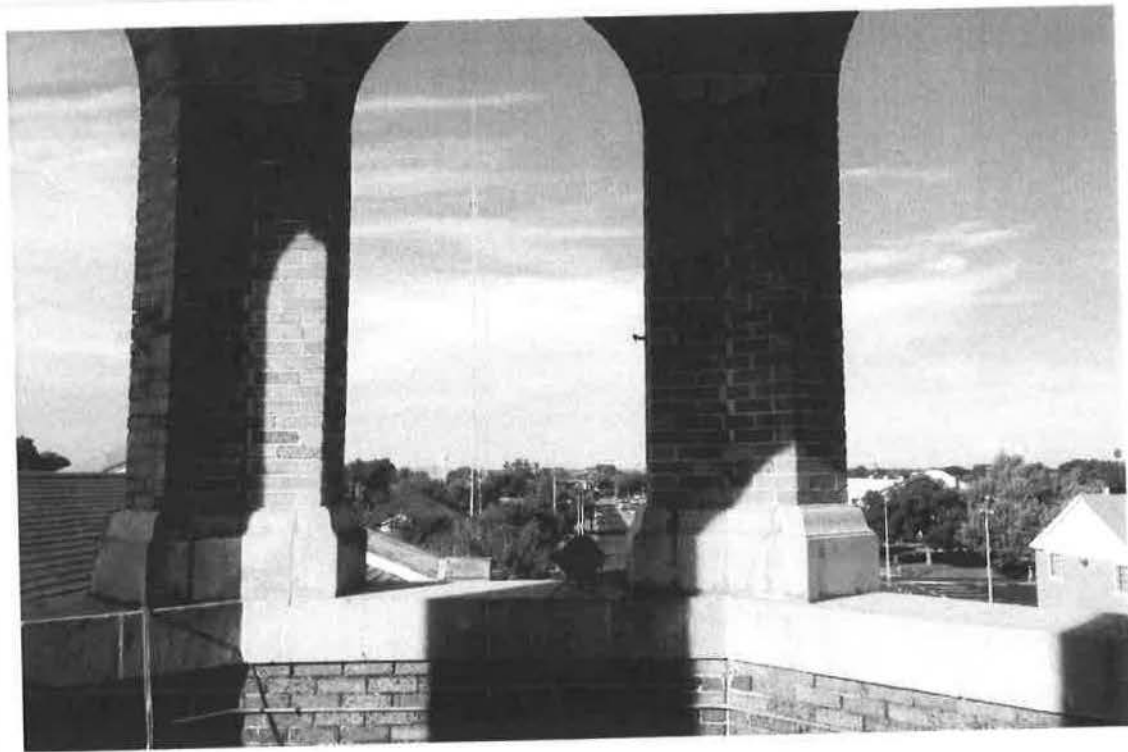
















Google earth

feet  
meters

**AUBURNDALE CITY HALL**  
**Auburndale, Polk Co., Florida**

2000  
600



**Locator Diagram**

**Lat - Long**  
**28.064624°**  
**-81.789120°**





CITY HALL, AUBURN DALE, FLA.

KOSZAR  
PHOTO





FIRE DEPARTMENT

WASSON PHOTO.



ALBERT W. ANDERSON  
1876-1954

L.D.  
SEPTEMBER 8, 1927

DECEMBER 1, 1954  
\*1926-1954

WILSON COOK  
1876-1954



CITY HILLS  
BIRMINGHAM





CITY HALL







ROXBOROUGH CITY HALL  
1871-1872  
MAYORS  
1871-1872  
1873-1874  
1875-1876  
1877-1878  
1879-1880  
1881-1882  
1883-1884  
1885-1886  
1887-1888  
1889-1890  
1891-1892  
1893-1894  
1895-1896  
1897-1898  
1899-1900  
1901-1902  
1903-1904  
1905-1906  
1907-1908  
1909-1910  
1911-1912  
1913-1914  
1915-1916  
1917-1918  
1919-1920  
1921-1922  
1923-1924  
1925-1926  
1927-1928  
1929-1930  
1931-1932  
1933-1934  
1935-1936  
1937-1938  
1939-1940  
1941-1942  
1943-1944  
1945-1946  
1947-1948  
1949-1950  
1951-1952  
1953-1954  
1955-1956  
1957-1958  
1959-1960  
1961-1962  
1963-1964  
1965-1966  
1967-1968  
1969-1970  
1971-1972  
1973-1974  
1975-1976  
1977-1978  
1979-1980  
1981-1982  
1983-1984  
1985-1986  
1987-1988  
1989-1990  
1991-1992  
1993-1994  
1995-1996  
1997-1998  
1999-2000  
2001-2002  
2003-2004  
2005-2006  
2007-2008  
2009-2010  
2011-2012  
2013-2014  
2015-2016  
2017-2018  
2019-2020  
2021-2022  
2023-2024

10



CONSULTANT DEVELOPMENT

CONSTRUCTION  
SERVICES

CONSTRUCTION  
SERVICES

CONSTRUCTION  
SERVICES  
1-800-452-4522



Information  
Technology





*City of  
Auburndale*









UNITED STATES DEPARTMENT OF THE INTERIOR  
NATIONAL PARK SERVICE

NATIONAL REGISTER OF HISTORIC PLACES  
EVALUATION/RETURN SHEET

REQUESTED ACTION: NOMINATION

PROPERTY Auburndale City Hall  
NAME:

MULTIPLE  
NAME:

STATE & COUNTY: FLORIDA, Polk

DATE RECEIVED: 11/08/13      DATE OF PENDING LIST: 12/09/13  
DATE OF 16TH DAY: 12/24/13      DATE OF 45TH DAY: 12/25/13  
DATE OF WEEKLY LIST:

REFERENCE NUMBER: 13000964

REASONS FOR REVIEW:

APPEAL: N DATA PROBLEM: N LANDSCAPE: N LESS THAN 50 YEARS: N  
OTHER: N PDIL: N PERIOD: N PROGRAM UNAPPROVED: N  
REQUEST: N SAMPLE: N SLR DRAFT: N NATIONAL: N

COMMENT WAIVER: N

ACCEPT       RETURN       REJECT      12-24-13 DATE

ABSTRACT/SUMMARY COMMENTS:

**Entered in  
The National Register  
of  
Historic Places**

RECOM./CRITERIA \_\_\_\_\_

REVIEWER \_\_\_\_\_ DISCIPLINE \_\_\_\_\_

TELEPHONE \_\_\_\_\_ DATE \_\_\_\_\_

DOCUMENTATION see attached comments Y/N see attached SLR Y/N

If a nomination is returned to the nominating authority, the nomination is no longer under consideration by the NPS.



**FLORIDA DEPARTMENT of STATE**

RICK SCOTT  
Governor

KEN DETZNER  
Secretary of State

October 30, 2013

Ms. Carol Shull, Keeper  
National Register of Historic Places  
Department of Interior  
1201 Eye Street, N.W., 8<sup>th</sup> Floor  
Washington, D.C. 20005

Dear Ms. Shull:

Enclosed is a submission of the nomination and additional materials (nomination form, continuation sheets, site plan, GIS data, digital images and disk) for .

**Auburndale City Hall, Auburndale, Polk County, Florida**

Please do not hesitate to contact me at (850) 245-6364 if you have any questions or require any additional information.

Sincerely,

A handwritten signature in blue ink that reads "Barbara E. Mattick".

Barbara E. Mattick, Ph.D.  
Deputy State Historic Preservation Officer  
for Survey & Registration

Enclosures



**DIVISION OF HISTORICAL RESOURCES**  
R. A. Gray Building • 500 South Bronough Street • Tallahassee, Florida 32399-0250  
Telephone: 850.245.6300 • Facsimile: 850.245.6436 • [www.flheritage.com](http://www.flheritage.com)  
*Commemorating 500 years of Florida history*     [www.vivaflorida.org](http://www.vivaflorida.org)

