

LAKE GUERNSEY STATE PARK
Guernsey vicinity,
Platte County, Wyoming
Dam and Powerhouse
Photo: Mark Junge, 1977



LAKE GUERNSEY STATE PARK

Guernsey vicinity,

Platte County, Wyoming

Powder Magazine on Lakeshore
Drive

Photo: Mark Junge, 1977



LAKE GUERNSEY STATE PARK
Guernsey vicinity,
Platte County, Wyoming
Site of CCC Camp
Photo: Ethan Carr, 1994



LAKE GUERNSEY STATE PARK
Guernsey vicinity,
Platte County, Wyoming
The "Castle," overlook structure
Photo: Ethan Carr, 1994



LAKE GUERNSEY STATE PARK
Guernsey vicinity,
Platte County, Wyoming
"Castle" steps
Photo: Ethan Carr, 1994



LAKE GUERNSEY STATE PARK
Guernsey vicinity,
Platte County, Wyoming
View from Brimmer Point
Photo: Mark Junge, 1977



LAKE GUERNSEY STATE PARK
Guernsey vicinity,
Platte County, Wyoming
CCC Construction
Photo: National Archives, R.G. 79,
c. 1935



LAKE GUERNSEY STATE PARK
Guernsey vicinity,
Platte County, Wyoming
Museum Building--interior
Photo: Mark Junge, 1977



MUSEUM STEPS.

LAKE GUERNSEY STATE PARK NHL NOMINATION
PLATTE COUNTY, WY
PHOTO - E. CARR 1994



ORIGINAL GUARDRAILS IN 1935

LAKE GUERNSEY STATE PARK (NVA now)

PLATTE Co., WYO

c. 1935

Photo © Wafu Archives, MID - RG-79



VIEW FROM THE "CASTLE"

LAKE GUERSEY STATE PARK NHL NOMINATION
PLATTE COUNTY, WY

PHOTO - E. CARR 1994



CCC FOOTBRIDGE

LAKE GUERNEY STATE PARK NHL DISTRICT

PLATTE CITY, WY

PHOTO: MARK JUNKE, 1977



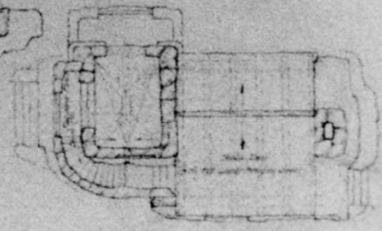
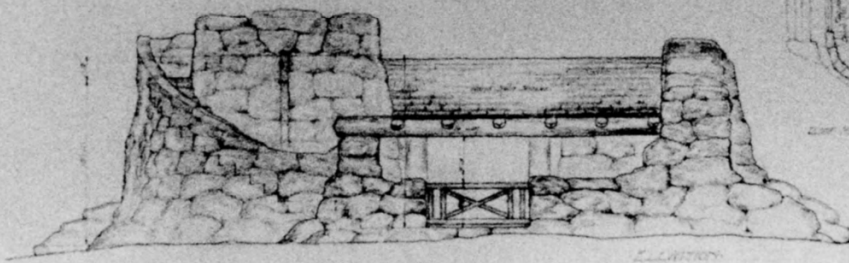
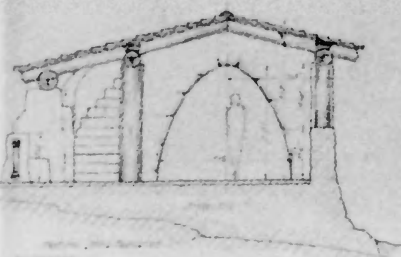
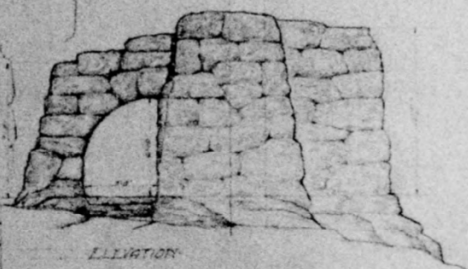
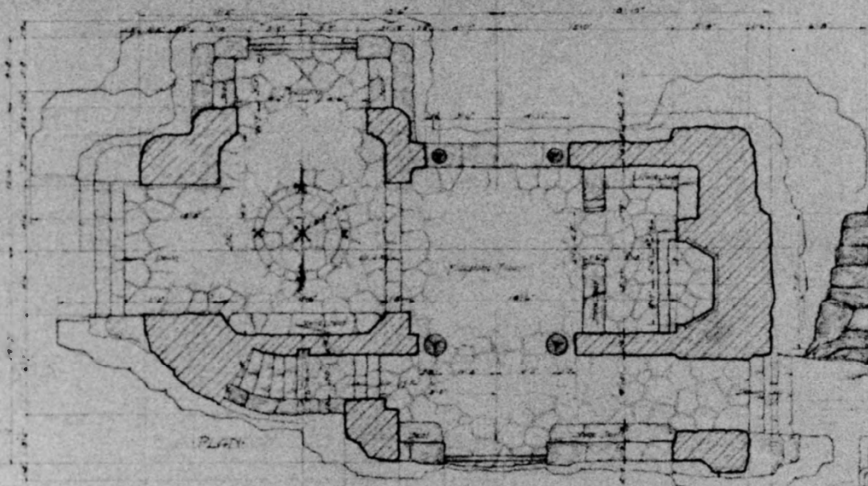
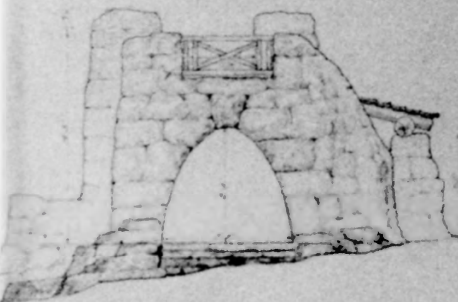
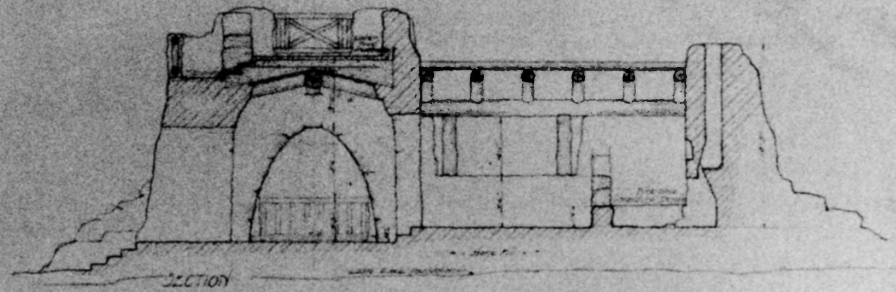
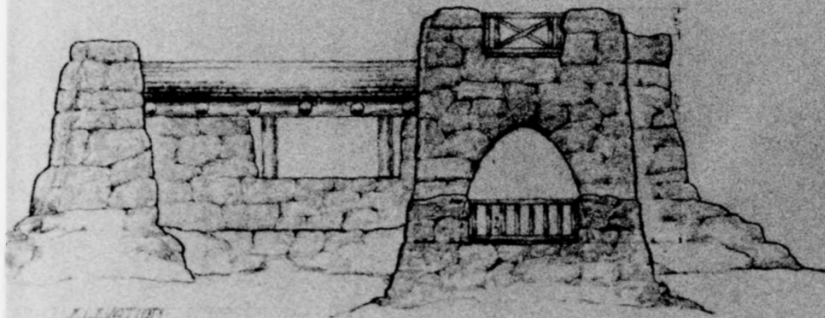
LAKE GUERNSEY STATE PARK N.H. DISTRICT
STEPS NEAR C.L.L. FOOTBRIDGE
PHOTO: MARK JUNGE, 1977



NORTH BLUFF COUNCIL STATION
("MILLION DOLLAR BIFFEY")

LAKE GUERNEY STATE PARK NAL DISTRICT
PLATTE CTY., WY.

PHOTO: MARK JUNGE, 1977



PICNIC SHELTER

DEPARTMENT OF THE INTERIOR -
NATIONAL PARK SERVICE -
STATE TREASURERY CONTRACTORS
Picnic Shelter in
All View Camp - 1922 - 10
Contract - 10000

E. S. Mosher^E, DRAWING FOR THE "CASTLE". Ca. 1934
LAKE GUERNSEY STATE PARK NHL DISTRICT
PLATTE GT, WY
COPYWORK: MARK JUNKE, 1977



LAKE GUERNSEY STATE PARK (NAC NOW)

PLATTE Co.; WYO

c. 1935

Photo © NATL ARCHIVES, MD - RG 79



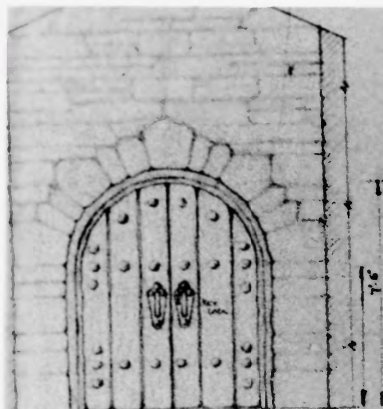
JOHN FWER $\frac{1}{2}$ MUSEUM STAFF, ca. 1939

LAKE GUERNEY STATE PARK NHL DISTRICT

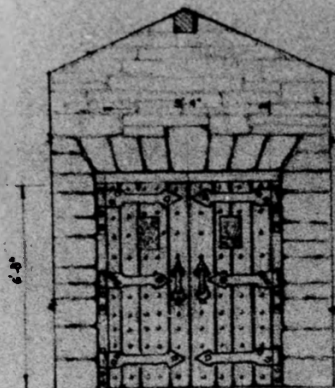
PLATTE CITY, WY

PHOTO: UNKNOWN

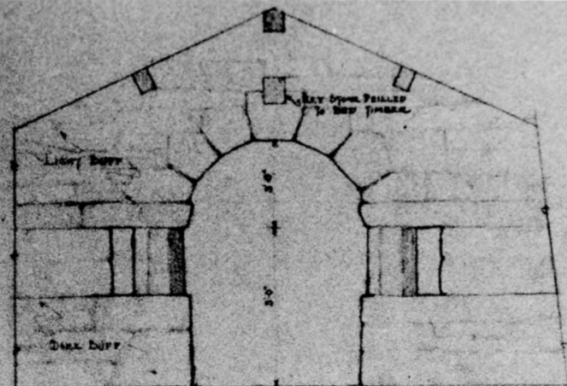
COPYWORK: MARK JUNGE, 1977



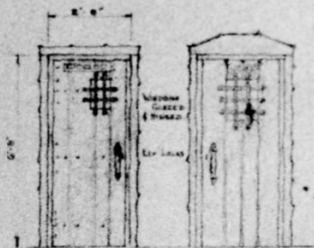
OUTSIDE ELEVATION FRONT ENTRANCE



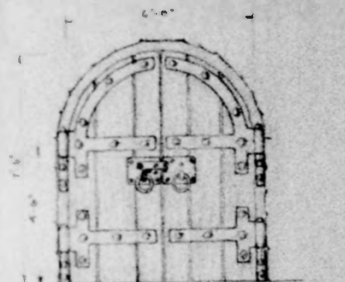
INSIDE ELEVATION SOUTH DOOR



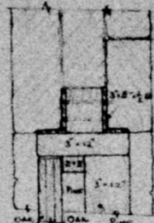
DOORWAY TO SOUTH WING



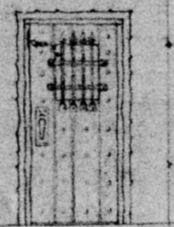
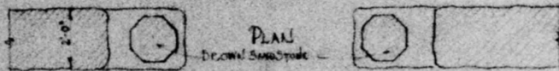
TOILET DOORS
SCALE 1/2" = 1'-0"



INSIDE ELEVATION FRONT ENTRANCE DOOR
SCALE 1/2" = 1'-0"



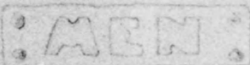
HEAD JAMB
SOUTH DOOR
SCALE 1/2" = 1'-0"



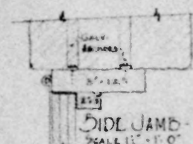
LIBRARY DOOR
JAMB SAME AS TOILETS
SCALE 1/2" = 1'-0"

BILL OF MATERIALS

ITEM	QUANTITY	COST
DIMENSION LUMBER	116.00	286.00
FINISH LUMBER	15.00	54.00
MILL WORK		30.00
SHINGLES	40.24	36.00
ROOFING FELT	4.00	8.00
COPPER FLASHING	10.00	27.00
CEMENT	2.00	6.00
LIME	20.00	6.00
FLUE LINING	6	7.00
FIRE BRICK	2.00	30.00
STEEL ANGLES		15.00
LOGS	9	18.00
SCREWS BOLTS LBS		50.00
DAMPER	1	8.00
WALL TIES	40	4.00
NAILS	400	20.00
CAULKING-WENISH - PLUMBING -		15.00
PIPE	2.00	20.00
CLOSETS	3	45.00
LAVATORIES	2	20.00
URNIAL	1	20.00
FITTINGS		20.00
PUMP (WATER)	1	30.00
ELECTRICAL EQUIPMENT		
TOTAL		240.00



HEAD PLATE TOILETS
SCALE 1/2" = 1'-0"

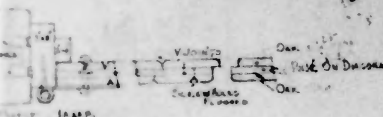


SIDE JAMB
SCALE 1/2" = 1'-0"

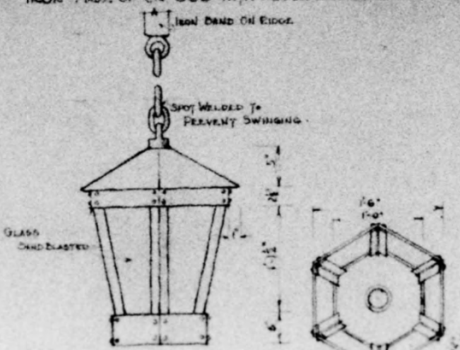
LABOR

ITEM	SCHEDULED HOURS	ACTUAL HOURS
EXCAVATION		5
STONE WORK	3	7 1/2
ROOF TRIMMING	1	1 1/2
DOORS-WINDOW-FINISH	1	1 1/2
HARDWARE		3
PLUMBING	1/2	1/2
WIRING	1/2	1/2
TOTAL	6	10 1/2

ALL HARDWARE EXCEPT LOCKS TO BE BLACK IRON MADE UP ON JOB WITH ROUGH HAMMERED SURFACE



DOOR JAMB
JAMB & STOP TO BE ANGED
DOORS TO BE SAND GLAZED



FRONT ENTRANCE LAMP
SCALE 1/2" = 1'-0"

SHEET No. 6

DEPARTMENT OF THE INTERIOR
NATIONAL PARK SERVICE
STATE PARK EMERGENCY CONSERVATION WORK

MUSEUM
LARK GUERARDY - STATE PARK DEPT.

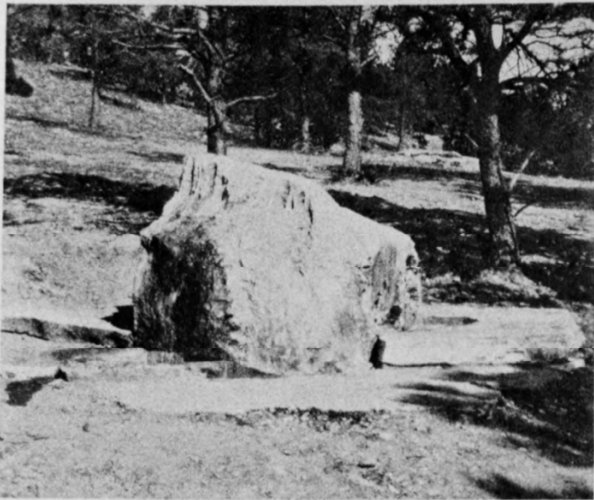
DESIGNED BY
Robert B. Bly

DRAWN BY
M. P. B.

ROLAND PRATT, DRAWING FOR MUSEUM, ca. 1934

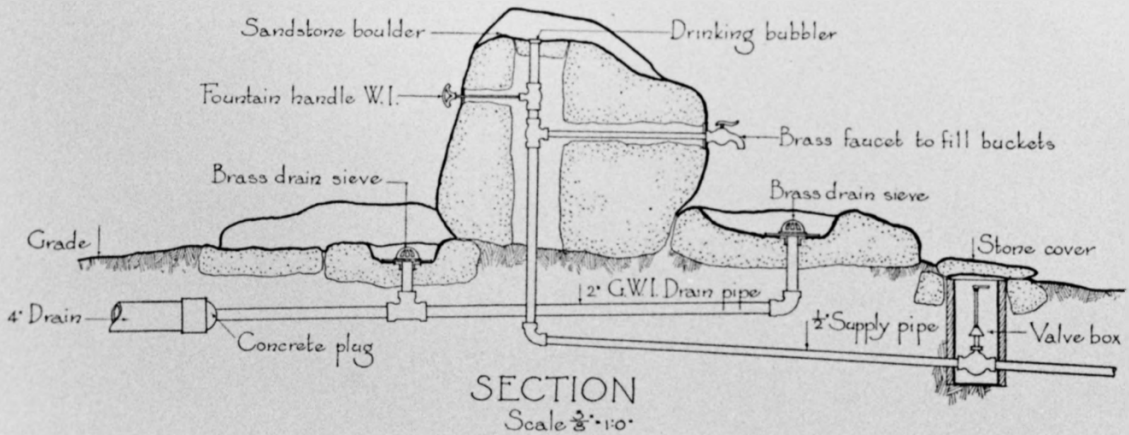
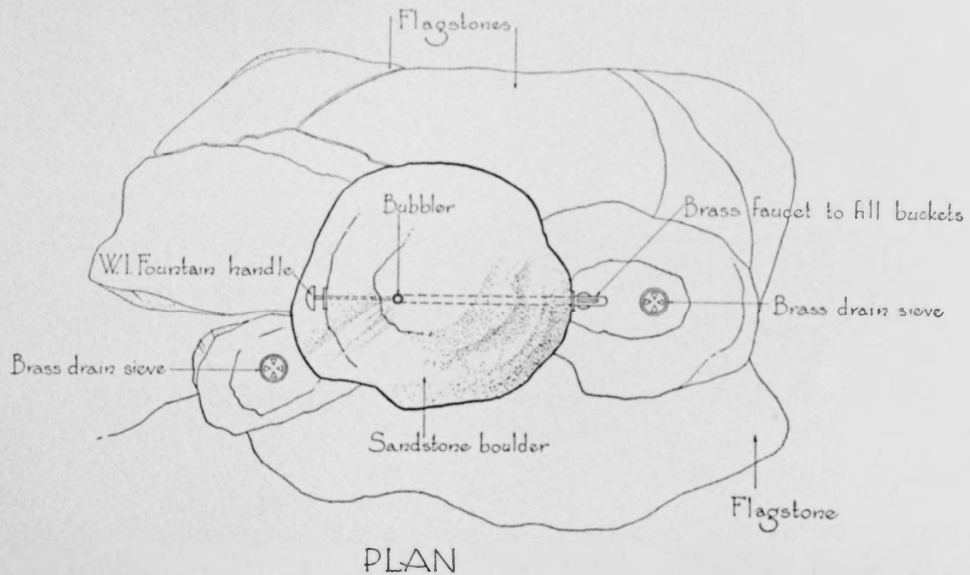
LAKE GUERASEY STATE PARK NATL DISTRICT
PLATTE CITY, WY

COPYWORK: MARK JUNGE, 1977



Drinking Fountain
Lake Guernsey State Park - - - Wyoming

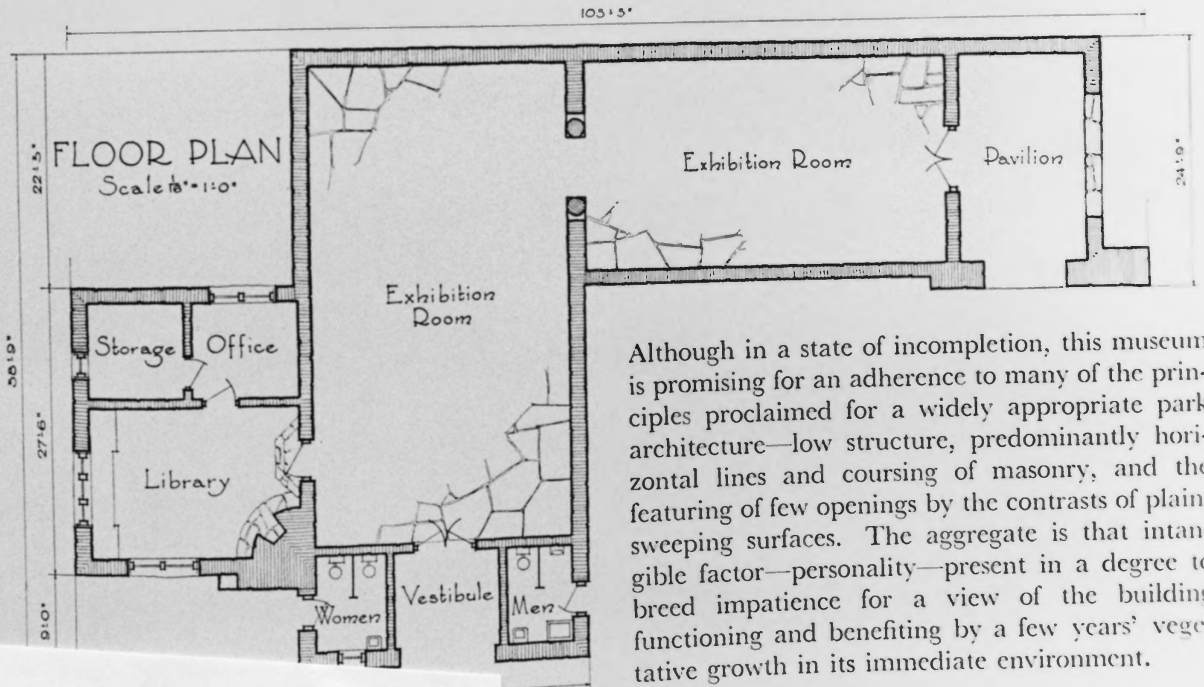
Here certainly is the peak accomplishment in naturalistic masking of a provision for bubbler and tap. It is a temptation hardly resistible to state that the rock was smitten with a rod and that the water gushed forth in the best biblical tradition. However the section drawing below evidences too plainly to the contrary - a laborious business of drilling and pipe fitting. Smiting with a rod would have been easier.



LAKE GUERNSEY STATE PARK
Guernsey vicinity,
Platte County, Wyoming
Bubbler photo, plan & section
From Good, *Park Structures & Facilities*, 1935



Museum, Lake Guernsey State Park, Wyoming



Although in a state of incompleteness, this museum is promising for an adherence to many of the principles proclaimed for a widely appropriate park architecture—low structure, predominantly horizontal lines and coursing of masonry, and the featuring of few openings by the contrasts of plain, sweeping surfaces. The aggregate is that intangible factor—personality—present in a degree to breed impatience for a view of the building functioning and benefiting by a few years' vegetative growth in its immediate environment.

LAKE GUERNSEY STATE PARK
 Guernsey vicinity
 Platte County, Wyoming
 Museum Building
 From *Good, Park Structures & Facilities*, 1935