



YALE STEAM LAUNDRY BUILDINGS  
437-443 NEW YORK AVENUE, NW  
WASHINGTON, DC

E.H.T. TRACERIES, INC.  
SEPTEMBER 1998

D.C. HISTORIC PRESERVATION DIVISION  
FACADES, LOOKING NORTH

1 OF 19



YALE STEAM LAUNDRY

308  
345-4733  
**BRIGHT**  
REALTY  
KENTON, KY



YALE STEAM LAUNDRY BUILDINGS  
437 NEW YORK AVENUE, NW  
WASHINGTON, DC

E.H.T. TRACERIES, INC,  
SEPTEMBER 1998

D.C. HISTORIC PRESERVATION DIVISION  
SOUTHWEST CORNER, LOOKING NORTHEAST

2 OF 19





LEASE  
202-296-4400

FORD

YALE STEAM LAUNDRY BUILDINGS  
437 NEW YORK AVENUE, NW  
WASHINGTON, DC

E.H.T. TRACERIES, INC.

SEPTEMBER 1998

D.C. HISTORIC PRESERVATION DIVISION  
EAST ELEVATION, LOOKING WEST

3 OF 19



YALE STEAM LAUNDRY BUILDINGS

437 NEW YORK AVENUE, NW

WASHINGTON, DC

E.H.T. TRACERIES, INC.

SEPTEMBER 1998

D.C. HISTORIC PRESERVATION DIVISION

ADDITION, SOUTH ELEVATION, LOOKING NORTH

4 OF 19





YALE STEAM LAUNDRY BUILDINGS

437 NEW YORK AVENUE, NW

WASHINGTON, DC

E. H. T. TRACERIES, INC.

SEPTEMBER 1998

D.C. HISTORIC PRESERVATION DIVISION

NORTH ELEVATION, LOOKING SOUTHEAST

5 OF 19



YALE STEAM LAUNDRY BUILDINGS

437 NEW YORK AVENUE, NW

WASHINGTON, DC

E. H. T. TRACERIES, INC.

SEPTEMBER 1998

D.C. HISTORIC PRESERVATION DIVISION

FIRST FLOOR, LOOKING SOUTH

6 OF 19





YALE STEAM LAUNDRY BUILDINGS

437 NEW YORK AVENUE, NW

WASHINGTON, DC

E.H.T. TRACERIES, INC.

SEPTEMBER 1998

D.C. HISTORIC PRESERVATION DIVISION

FIRST FLOOR, STAIR AND ELEVATOR, LOOKING SOUTHWEST

7 OF 19



YALE STEAM LAUNDRY BUILDINGS

437 NEW YORK AVENUE, NW

WASHINGTON, DC

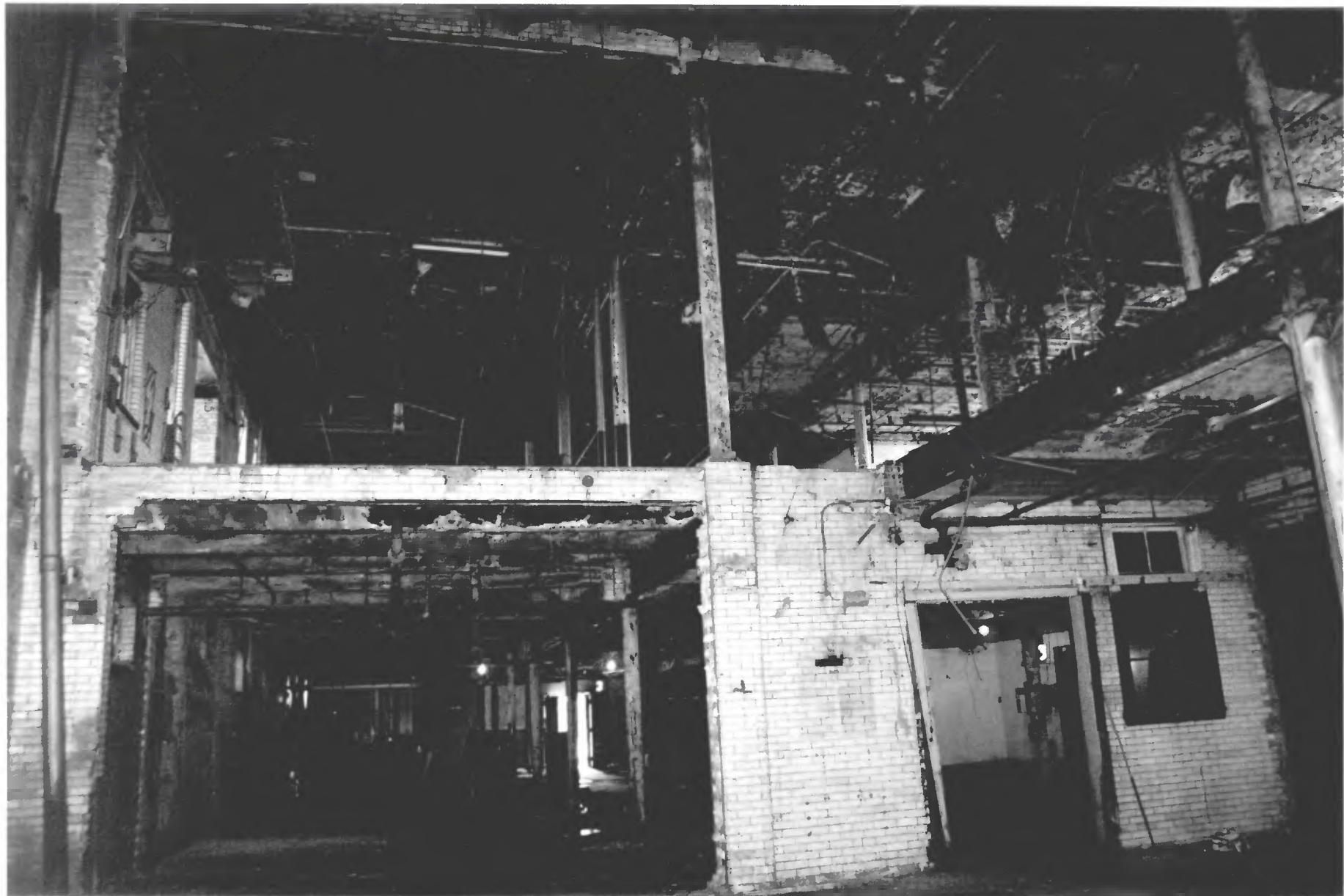
E.H.T. TRACERIES, INC.

SEPTEMBER 1998

D.C. HISTORIC PRESERVATION DIVISION

FIRST FLOOR, LOOKING NORTHEAST

8 OF 19



YALE STEAM LAUNDRY BUILDINGS

437 NEW YORK AVENUE, NW

WASHINGTON, DC

E.H.T. TRACERIES, INC.

SEPTEMBER 1998

D.C. HISTORIC PRESERVATION DIVISION

FIRST FLOOR, LOOKING SOUTH

9 OF 19





YALE STEAM LAUNDRY BUILDINGS

437 NEW YORK AVENUE, NW

WASHINGTON, DC

E. H. T. TRACERIES, INC.

SEPTEMBER 1998

DC. HISTORIC PRESERVATION DIVISION

SECOND FLOOR, LOOKING SOUTH

10 OF 19



YALE STEAM LAUNDRY BUILDINGS

437 NEW YORK AVENUE, NW

WASHINGTON, DC

E.H.T. TRACERIES, INC.

SEPTEMBER 1998

DC. HISTORIC PRESERVATION DIVISION

SECOND FLOOR, LOOKING NORTHEAST

11 OF 19





YALE STEAM LAUNDRY BUILDINGS

437 NEW YORK AVENUE, NW

WASHINGTON, DC

E.H.T. TRACERIES, INC.

SEPTEMBER 1998

DC. HISTORIC PRESERVATION DIVISION

THIRD FLOOR, LOOKING SOUTH

12 OF 19



YALE STEAM LAUNDRY BUILDINGS

437 NEW YORK AVENUE, NW

WASHINGTON, DC

E.H.T. TRACERIES, INC.

SEPTEMBER 1998

D.C. HISTORIC PRESERVATION DIVISION

THIRD FLOOR, CEILING

13 OF 19



YALE STEAM LAUNDRY BUILDINGS

437 NEW YORK AVENUE, NW

WASHINGTON, DC

E.H.T. TRACERIES, INC.

SEPTEMBER 1998

D.C. HISTORIC PRESERVATION DIVISION

ADDITION, FIRST FLOOR, LOOKING SOUTH

14 OF 19





YALE STEAM LAUNDRY BUILDINGS  
437 NEW YORK AVENUE, NW

WASHINGTON, DC

E.H.T. TRACERIES, INC.

SEPTEMBER 1998

D.C. HISTORIC PRESERVATION DIVISION

ADDITION, SECOND FLOOR, LOOKING NORTHEAST

15 OF 19



Downtown  
Washington  
↗

LOCAL  
TRAFFIC  
KEEP  
RIGHT

STREET  
SIGN  
7

443

301-  
345-4733  
**BRIGHT**  
REALTY  
AIA IN DC, LLC

YALE STEAM LAUNDRY BUILDINGS

STABLE/GARAGE

443 NEW YORK AVENUE, NW

WASHINGTON, DC

E. H. T. TRACERIES, INC.

SEPTEMBER 1998

D.C. HISTORIC PRESERVATION DIVISION

SOUTHEAST CORNER, LOOKING NORTHWEST

16 OF 19



YALE STEAM LAUNDRY BUILDINGS  
437-443 NEW YORK AVENUE, NW  
WASHINGTON, DC

E. H. T. TRACERIES, INC,  
SEPTEMBER 1998

D.C. HISTORIC PRESERVATION DIVISION  
SOUTHWEST CORNER, LOOKING NORTHEAST

17 OF 19





NO  
PARKING  
IN  
ALLEY

STOP



YALE STEAM LAUNDRY BUILDINGS

STABLE/GARAGE

443 NEW YORK AVENUE, NW

WASHINGTON, DC

E.H.T. TRACERIES, INC.

SEPTEMBER 1998

D.C. HISTORIC PRESERVATION DIVISION

NORTHEAST CORNER, LOOKING SOUTHWEST

18 OF 19



YALE STEAM LAUNDRY BUILDINGS

STABLE/GARAGE

443 NEW YORK AVENUE, NW

WASHINGTON, DC

E.H.T. TRACERIES, INC.

SEPTEMBER 1998

D.C. HISTORIC PRESERVATION DIVISION

SECOND FLOOR, LOOKING SOUTHEAST

19 OF 19