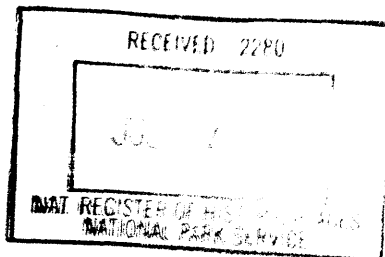


United States Department of the Interior  
National Park Service

288



### National Register of Historic Places Registration Form

This form is for use in nominating or requesting determinations for individual properties and districts. See instructions in *How to Complete the National Register of Historic Places Registration Form* (National Register Bulletin 16A). Complete each item by marking "x" in the appropriate box or by entering the information requested. If an item does not apply to the property being documented, enter "N/A" for "not applicable." For functions, architectural classification, materials, and areas of significance, enter only categories and subcategories from the instructions. Place additional entries and narrative items on continuation sheets (NPS Form 10-900a). Use a typewriter, word processor, or computer, to complete all items.

#### 1. Name of Property

historic name McClellan's General Store

other names/site number \_\_\_\_\_

#### 2. Location

street & number 107 East Main N/A not for publication

city or town New London N/A vicinity

state Iowa code IA county Henry code 087 zip code 52645

#### 3. State/Federal Agency Certification

As the designated authority under the National Historic Preservation Act, as amended, I hereby certify that this  nomination  request for determination of eligibility meets the documentation standards for registering properties in the National Register of Historic Places and meets the procedural and professional requirements set forth in 36 CFR Part 60. In my opinion, the property  meets  does not meet the National Register criteria. I recommend that this property be considered significant  nationally  statewide  locally. ( See continuation sheet for additional comments.)

Rowell J. Sorke July 10, 2003  
Signature of certifying official/Title Date

**STATE HISTORICAL SOCIETY OF IOWA**  
State of Federal agency and bureau

In my opinion, the property  meets  does not meet the National Register criteria. ( See continuation sheet for additional comments.)

\_\_\_\_\_  
Signature of certifying official/Title Date

\_\_\_\_\_  
State or Federal agency and bureau

#### 4. National Park Service Certification

I hereby certify that the property is:

- entered in the National Register.  See continuation sheet.
- determined eligible for the National Register  See continuation sheet.
- determined not eligible for the National Register.
- removed from the National Register.
- other, (explain): \_\_\_\_\_

Entered in the  
National Register  
Signature of the Keeper

AUG 28 2003

Date of Action

\_\_\_\_\_  
\_\_\_\_\_  
\_\_\_\_\_  
\_\_\_\_\_

McClellan's General Store  
Name of Property

Henry County, IA  
County and State

**5. Classification**

**Ownership of Property**  
(Check as many boxes as apply)

- private
- public-local
- public-State
- public-Federal

**Category of Property**  
(Check only one box)

- building(s)
- district
- site
- structure
- object

**Number of Resources within Property**  
(Do not include previously listed resources in the count.)

Contributing	Noncontributing	
<u>1</u>	<u>0</u>	buildings
		sites
		structures
		objects
<u>1</u>	<u>0</u>	Total

**Name of related multiple property listing**  
(Enter "N/A" if property is not part of a multiple property listing.)

N/A

**Number of contributing resources previously listed in the National Register**

0

**6. Function or Use**

**Historic Functions**  
(Enter categories from instructions)

COMMERCE/TRADE/Department Store

COMMERCE/TRADE/Professional Offices

**Current Functions**  
(Enter categories from instructions)

HEALTH CARE/Clinic

DOMESTIC/Single Dwelling

**7. Description**

**Architectural Classification**  
(Enter categories from instructions)

MID-19th CENTURY: Italianate

**Materials**  
(Enter categories from instructions)

foundation STONE

walls BRICK

roof ASPHALT

other \_\_\_\_\_

**Narrative Description**

(Describe the historic and current condition of the property on one or more continuation sheets.)

McClellan's General Store

Name of Property

Henry County, IA

County and State

**8. Statement of Significance**

**Applicable National Register Criteria**

(Mark "x" in one or more boxes for the criteria qualifying the property for National Register listing.)

- A** Property is associated with events that have made a significant contribution to the broad patterns of our history.
- B** Property is associated with the lives of persons significant in our past.
- C** Property embodies the distinctive characteristics of a type, period, or method of construction or represents the work of a master, or possesses high artistic values, or represents a significant and distinguishable entity whose components lack individual distinction.
- D** Property has yielded, or is likely to yield, information important in prehistory or history.

**Criteria Considerations**

(Mark "x" in all the boxes that apply.)

Property is:

- A** owned by a religious institution or used for religious purposes.
- B** removed from its original location.
- C** a birthplace or grave.
- D** a cemetery.
- E** a reconstructed building, object, or structure.
- F** a commemorative property.
- G** less than 50 years of age or achieved significance within the past 50 years.

**Areas of Significance**

(Enter categories from instructions)

\_\_\_\_\_

\_\_\_\_\_

\_\_\_\_\_

**ARCHITECTURE**

\_\_\_\_\_

\_\_\_\_\_

\_\_\_\_\_

**Period of Significance**

c. 1865

**Significant Dates**

c. 1865

**Significant Person**

(Complete if Criterion B is marked above)

\_\_\_\_\_

**Cultural Affiliation**

N/A

**Architect/Builder**

Unknown

Unknown

**Narrative Statement of Significance**

(Explain the significance of the property on one or more continuation sheets.)

**9. Major Bibliographical References**

**Bibliography**

(Cite the books, articles, and other sources used in preparing this form on one or more continuation sheets.)

**Previous documentation on file (NPS):**

- preliminary determination of individual listing (36 CFR 67) has been requested
- previously listed in the National Register
- previously determined eligible by the National Register
- designated a National Historic Landmark
- recorded by Historic American Buildings Survey # \_\_\_\_\_
- recorded by Historic American Engineering Record # \_\_\_\_\_

**Primary location of additional data:**

- State Historic Preservation Office
- Other State agency
- Federal agency
- Local government
- University
- Other

Name of repository:

\_\_\_\_\_

McClellan's General Store  
Name of Property

Henry County, IA  
County and State

**10. Geographical Data**

Acreage of Property Less than one

**UTM References**

(Place additional UTM references on a continuation sheet.)

1 

1	5	6	3	4	6	1	7	4	5	3	1	7	5	2
Zone			Easting					Northing						

3 

Zone			Easting					Northing						

See continuation sheet

**Verbal Boundary Description**

(Describe the boundaries of the property on a continuation sheet.)

**Boundary Justification**

(Explain why the boundaries were selected on a continuation sheet.)

**11. Form Prepared By**

name/title Molly Myers Naumann, Consultant

organization Henry County Historic Preservation date March 2003

street & number 167 West Alta Vista telephone 641-682-2743

city or town Ottumwa state IA zip code 52501-1437

**Additional Documentation**

Submit the following items with the completed form:

**Continuation Sheets**

**Maps**

A USGS map (7.5 or 15 minute series) indicating the property's location.

A Sketch map for historic districts and properties having large acreage or numerous resources.

**Photographs**

Representative black and white photographs of the property.

**Additional Items**

(Check with the SHPO or FPO for any additional items)

**Property Owner**

(Complete this item at the request of SHPO or FPO.)

name Benjamin R. and Sarabeth L Carter

street & number 107 E. Main Street telephone 319-367-5854

city or town New London state IA zip code 52645

**Paperwork Reduction Act Statement:** This information is being collected for applications to the National Register of Historic Places to nominate properties for listing or determine eligibility for listing, to list properties, and to amend existing listings. Response to this request is required to obtain a benefit in accordance with the National Historic Preservation Act, as amended (16 U.S.C. 470 et seq.).

**Estimated Burden Statement:** Public reporting burden for this form is estimated to average 18.1 hours per response including time for reviewing instructions, gathering and maintaining data, and completing and reviewing the form. Direct comments regarding this burden estimate or any aspect of this form to the Chief, Administrative Services Division, National Park Service, P.O. Box 37127, Washington, DC 20013-7127; and the Office of Management and Budget, Paperwork Reductions Projects (1024-0018), Washington, DC 20503.

United States Department of the Interior  
National Park Service

# National Register of Historic Places Continuation Sheet

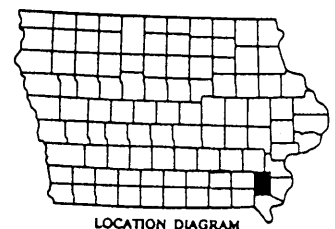
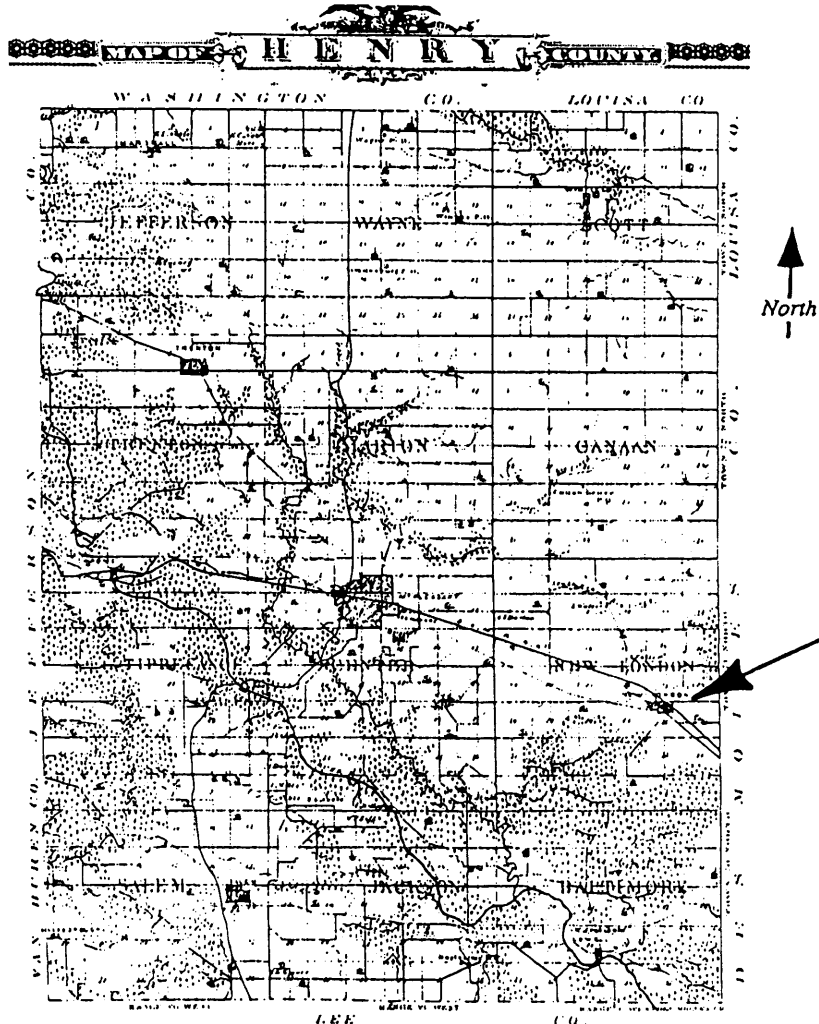
Section number 7

Page 1

McClellan's General Store  
Henry County, Iowa

## Narrative Description:

The McClellan General Store (c.1865) is located near the east end of the New London business district. The City of New London is located in the eastern part of Henry County, just one county west of the Mississippi River.



1875 map of Henry County  
Location of New London indicated by arrow  
(Andreas, Illustrated Historical Atlas of the State of Iowa, 1875)

United States Department of the Interior  
National Park Service

# National Register of Historic Places Continuation Sheet

Section number 7

Page 2

McClellan's General Store  
Henry County, Iowa

This two story gable roof brick commercial building is located on the north side of Main Street immediately west of a north/south alley. It is rectangular in shape measuring 24' x 60.5.'

The façade is located on the south gable end. There is a brick stepped parapet "boomtown" front, and the gable is hipped at the north end. Decorative brick corbelling is found on the parapet. There has never been a pressed metal cornice across the façade. The building features a symmetrical façade with a raised (three step) entry. Originally the door would have been recessed with a stone or metal threshold. The brick is laid in common bond and the building rests on a limestone foundation.

This building is a simple vernacular interpretation of the Italianate style, with the major design characteristic being the round arched windows at the second floor level. These windows are found on all four elevations, not just the façade. The hoodmolds around these windows are formed by decorative brickwork rather than heavy cast stone or metal hoods, while the sills are limestone. The original arched two over two double hung sash has been replaced by the present rectangular six over six sash. Other than the storefront, there are minimal openings at the first floor level, and only the round arched doorway in the rear (north) elevation appears to be original. The exterior iron stairs along the west elevation are shown on all Sanborn maps and today are a combination of original and new. Two round arched doors are found on the second floor: one opening to the exterior stairs on the west; and, one opening into space on the rear elevation. There are three extant chimneys, two original and one newer exterior chimney on the west elevation. Openings in the foundation walls are segmental arched.



Historic Photograph c. 1940  
Looking NW along Main Street

**United States Department of the Interior  
National Park Service**

**National Register of Historic Places  
Continuation Sheet**

Section number 7

Page 3

**McClellan's General Store  
Henry County, Iowa**

---

Exterior alterations to this building include the installation of the large plate glass window in the east elevation, and the covering of the original iron columned storefront with vertical board and batten. The large display windows flanking the front door are of the same size as the original ones. It is believed that the iron storefront exists under the present remodeling. The iron front was covered as early as World War II. The present pent roof with four slender supports is of recent origin. The southernmost window on the second floor, west elevation, has been bricked-in. Near the north end of the east wall is a broad doorway that was probably added in the 1930s (possibly to facilitate the movement of caskets). A rear porch was removed at some point in time, as indicated by the doorway on the second floor of the north elevation. A ramp leads to the first floor doorway on the north, providing handicapped accessibility. The interior has been greatly altered, with major changes as early as 1925 when it became a mortuary. No original elements can currently be seen due to new walls and flooring.

The first floor has always been used for commercial purposes of some type, while the second floor has been used as a residence as well as professional offices. Today the building houses a professional office on the first floor and a residence on the second.

The brick-patterned round arched windows on this building are very similar to those found on three National Register buildings in Mount Pleasant (nine miles NW). These Mount Pleasant buildings were constructed between 1856 and 1862: the Brazelton House Hotel from 1856; the Union Block from 1861; and, the McCandless Building from 1862.

This simple Italianate design was common in many Iowa communities just before and after the Civil War, but in many towns these storefronts have either been refaced or the entire building has been replaced. There were three buildings in this style constructed in New London following the Civil War, and all three are extant: This building, the McClellan General Store at 107 East Main; the Perry Frank Building at 113 East Main; and, the Smith & Weller Building at 100 East Main. These three buildings in the 100 block of East Main serve as a gateway to New London's business district.

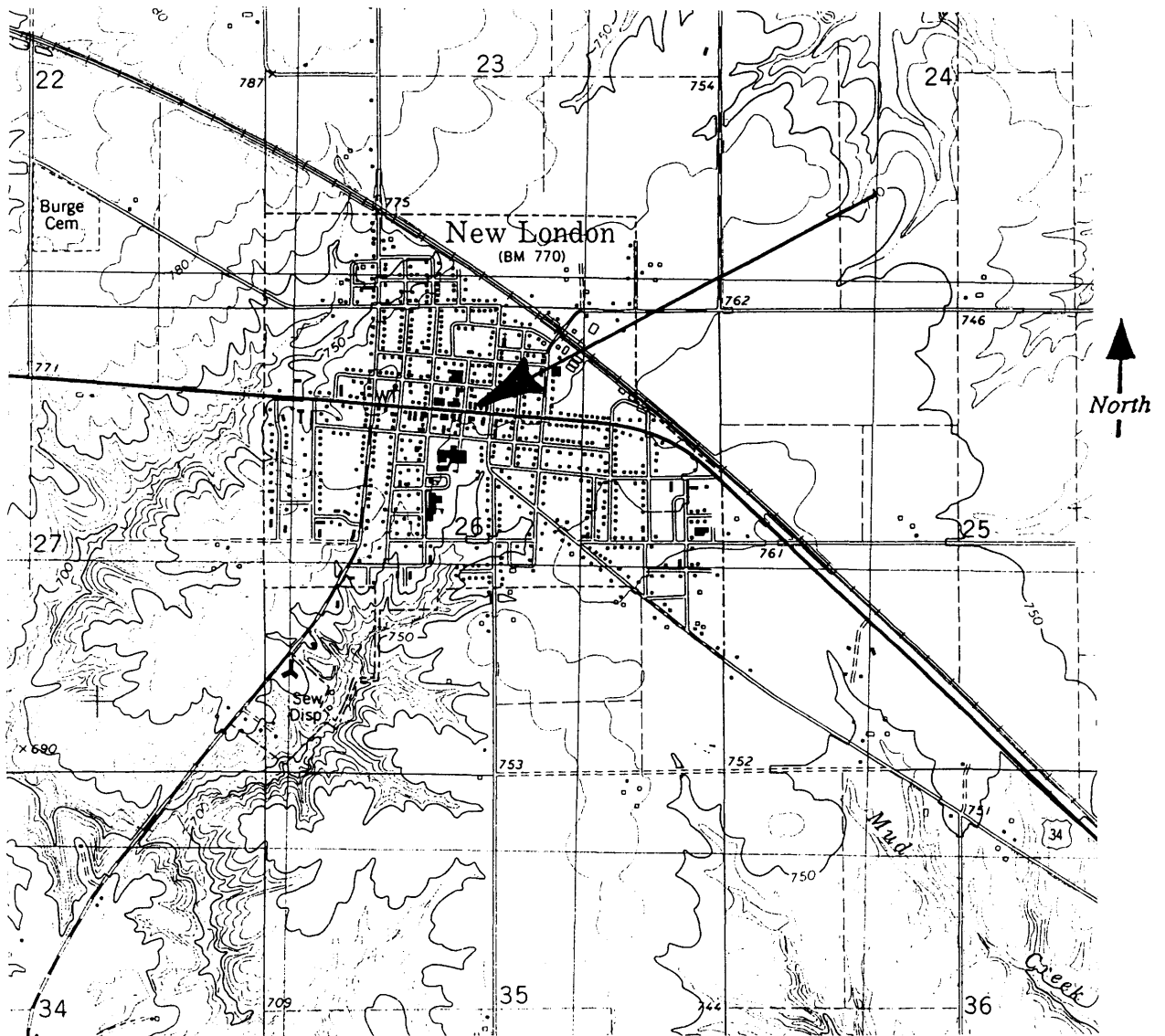
United States Department of the Interior  
National Park Service

# National Register of Historic Places Continuation Sheet

Section number 7

Page 4

McClellan's General Store  
Henry County, Iowa



U.S.G.S Map of New London (1981)  
Location of 107 East Main indicated by arrow



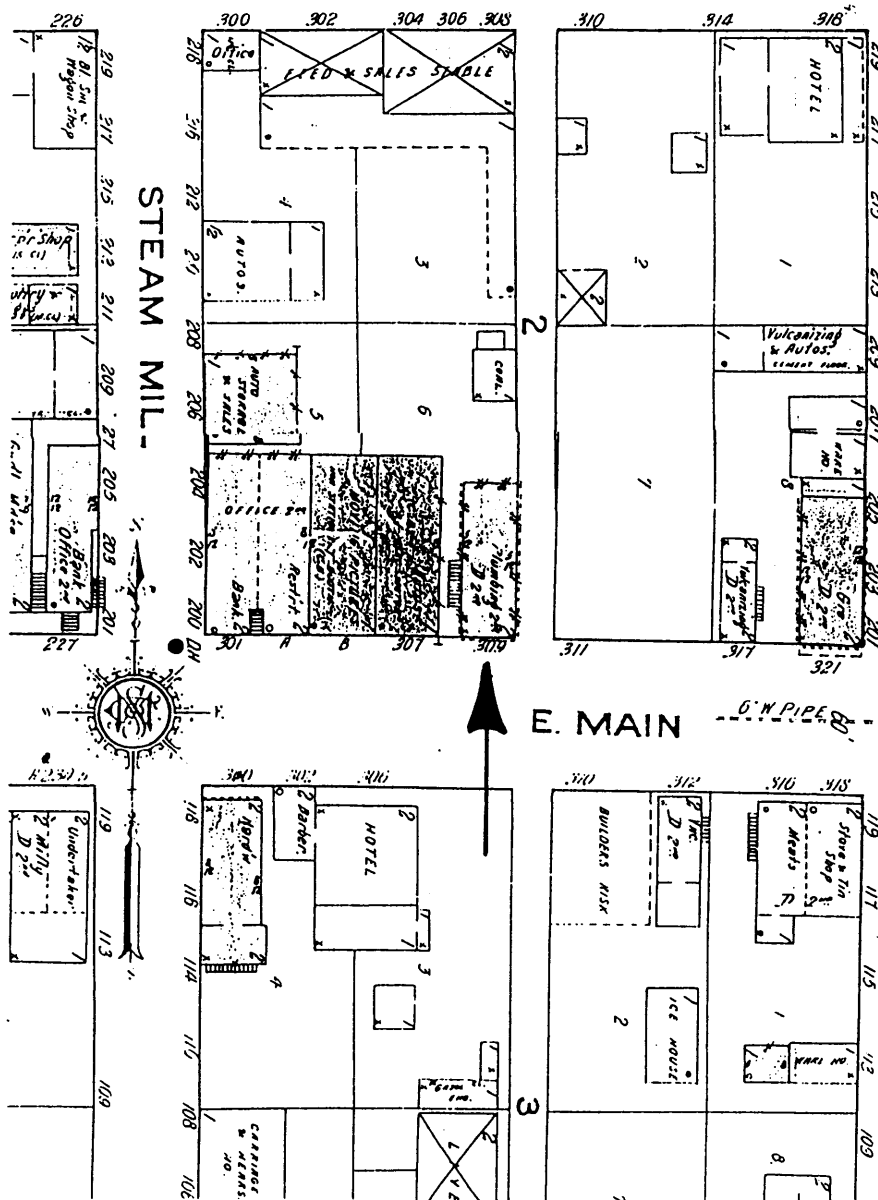
United States Department of the Interior  
National Park Service

National Register of Historic Places  
Continuation Sheet

Section number 7

Page 5

McClellan's General Store  
Henry County, Iowa



1916 Sanborn Fire Insurance Map  
Location of 107 East Main indicated by arrow

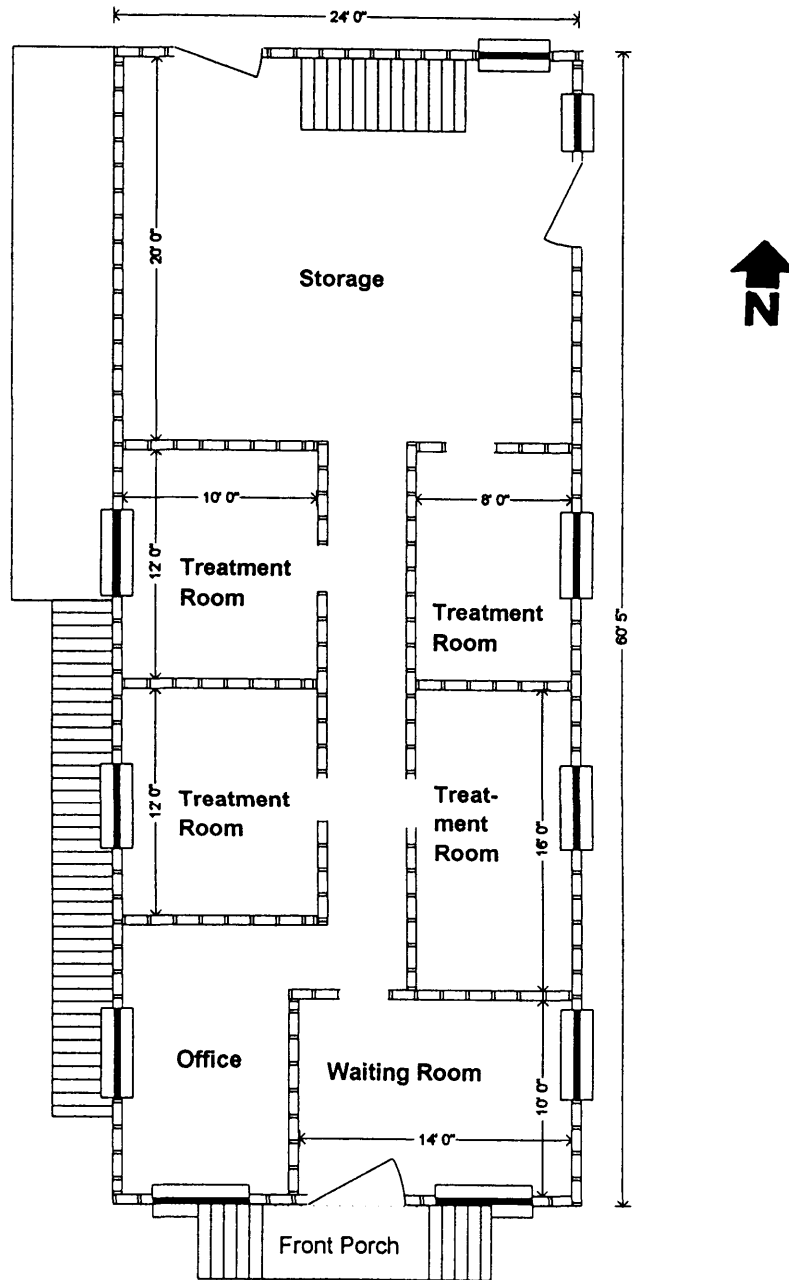
United States Department of the Interior  
National Park Service

# National Register of Historic Places Continuation Sheet

Section number 7

Page 6

McClellan's General Store  
Henry County, Iowa



Plan of first floor (commercial/office space)  
(Computerized plan based on drawings and measurements  
provided by the Henry County Historic Preservation Commission, 2003)

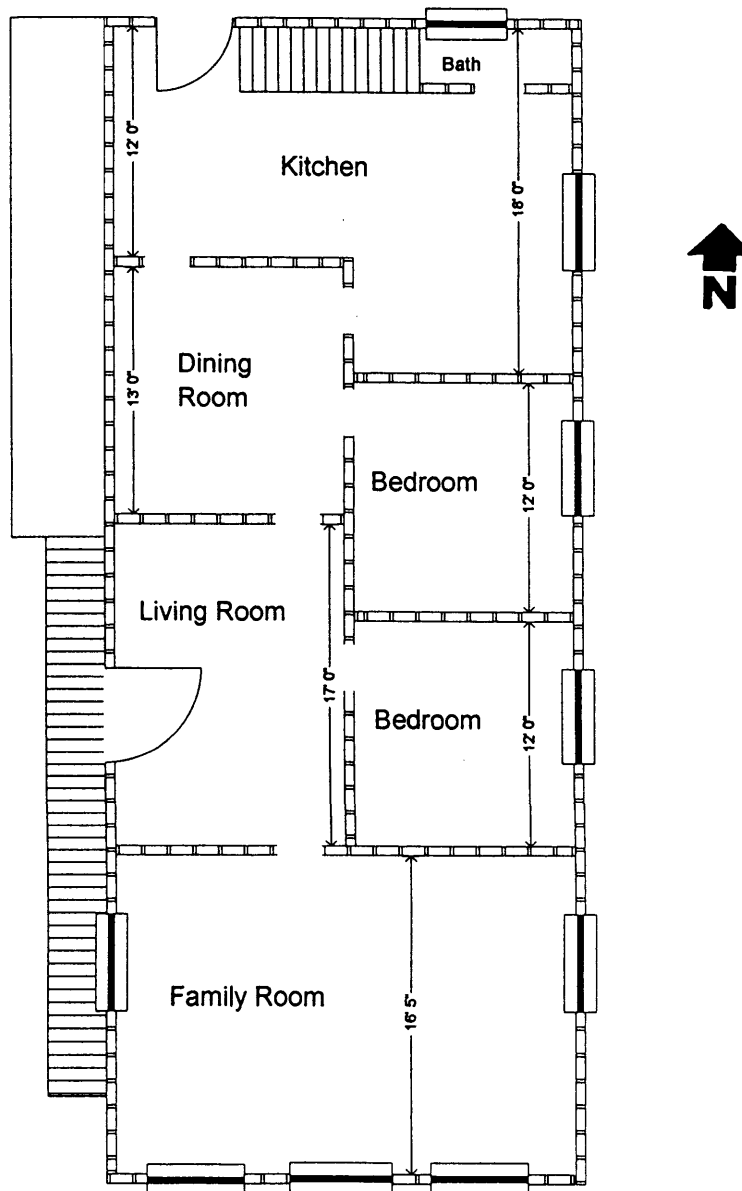
United States Department of the Interior  
National Park Service

# National Register of Historic Places Continuation Sheet

Section number 7

Page 7

McClellan's General Store  
Henry County, Iowa



Plan of second floor (residential)  
(Computerized plan based on drawings and measurements  
provided by the Henry County Historic Preservation Commission, 2003)

United States Department of the Interior  
National Park Service

# National Register of Historic Places Continuation Sheet

Section number 8

Page 8

**McClellan's General Store**  
Henry County, Iowa

## STATEMENT OF SIGNIFICANCE:

McClellan's General Store (c.1865) is locally significant under Criterion C as an example Italianate design used for a commercial building. This building set a new standard for commercial design in New London. In addition, it is of local interest because of its location on a major 19<sup>th</sup> century transportation route (the Territorial/Plank/Burlington-Mount Pleasant Road).

### The Territorial/Plank/Burlington-Mount Pleasant Road:

In the 1830s the two "gateways" into the Iowa Territory were Dubuque in the north, and Burlington in the south. Between 1839 and 1841 the Territorial Legislature reviewed and refined a territorial road extending westward to the Indian boundary line. Basically the Territorial Road ran from Burlington west through New London and Mount Pleasant. From Mount Pleasant roads radiated out like spokes on a wheel, leading north to Iowa City, south to Keosauqua, and west to Fairfield. The Burlington to Mount Pleasant Road provided the means for growth and development across southeast and south central Iowa prior to the Civil War. From territorial days on, the major roadway, and later the railroad, would follow this route, eventually all the way to the Missouri River.

The decade of the 1840s was one of rapid settlement and growth. Dissatisfaction with the roads, often impassable during rainy seasons, reached the point that discussions were held on how to build an all-weather, "plank" road. The General Assembly actually approved plans for fourteen plank roads, but only the Burlington-Mount Pleasant road was completed. When the road was new, it was a joy. However, wet weather in the fall and spring, added to the freezing conditions of the winter months caused major deterioration on the Plank Road. The end of the Plank Road Era was hastened not only by effects of weather and lack of maintenance of the road, but by the introduction of a totally new form of transportation .....the railroad.



Map using double line to show Plank Road between Burlington and Mount Pleasant  
(Henn, Williams & Co., A Township Map of the State of Iowa, 1851)

United States Department of the Interior  
National Park Service

# National Register of Historic Places Continuation Sheet

Section number 8

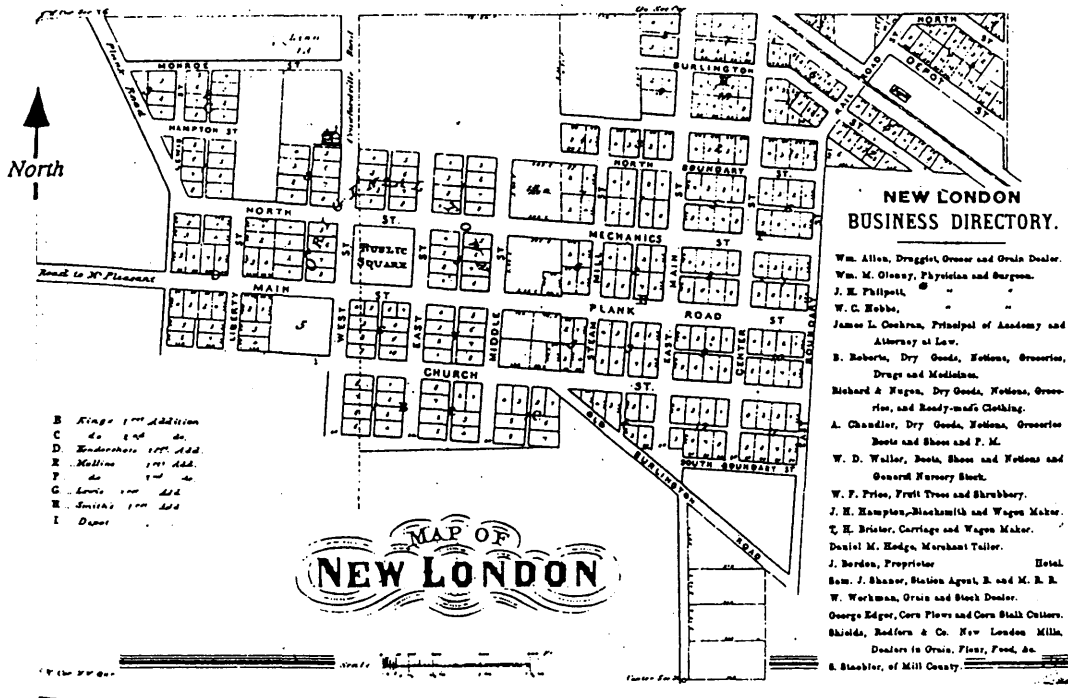
Page 9

McClellan's General Store  
Henry County, Iowa

On January 15, 1852 articles of incorporation were drawn up for the Burlington and Missouri River Rail Road Company. By May 1856 the tracks extended west to Burlington Danville, and in June the tracks arrived in New London, running parallel to the Territorial/Plank (Burlington) Road. Following the Civil War both the railroad and the Burlington to Mount Pleasant Road continued to carry heavy traffic to the west. At some point after the Civil War the Burlington Road assumed the name Blue Grass Road, a designation that would be used well into the 20<sup>th</sup> century. Shortly after 1900 a new mode of transportation began to be seen on the streets and roads of Henry County, the automobile. The importance of the Blue Grass Road/Harding Highway was shown in 1927 when the State Legislature called for its' early paving from Burlington west to Council Bluffs, basically following the original route from Burlington through New London to Mount Pleasant. Today U.S. Highway 34 follows much the same route across the state.

### New London Business District:

The Burlington-Mount Pleasant Road ran on a northwest diagonal entering the community from the southeast. On maps this diagonal road is labeled "Old Burlington Road." No map has been located that shows the actual route through New London originally, but by 1870 the diagonal connected north/south to Main Street via East Main (now Elm Street). Originally the commercial buildings were clustered around the public square in the west part of town. With the new road, and the railroad, the whole town started growing in more of an easterly direction. A small frame railroad depot was built the summer of 1856 in the northeast part of New London.



1870 Map of New London  
Note expansion toward the depot and the Burlington Road  
(Combination Atlas Map of Henry County, Iowa, 1870)

United States Department of the Interior  
National Park Service

# National Register of Historic Places Continuation Sheet

Section number 8

Page 10

McClellan's General Store  
Henry County, Iowa

---

The 100 block of East Main Street appears to have built up rapidly during the period following the Civil War. Traffic had increased along this part of Main due to the location of the depot to the northeast, and the connection with the Burlington Road at the east end of this block. Three of the oldest remaining brick buildings in New London are located in this block: the McClellan General Store (c.1865), the Perry Frank Building (1871-72), and the Smith-Weller Building (c.1875). All are of similar design.

### McClellan General Store:

On the north side of the street, in the middle of the block, is the two story building constructed for James McClellan c.1865 to house his business. The McClellan building appears to have set the standard for new commercial construction at this time. It was the first example of a simplified Italianate style building in the community. The major stylistic element of Italianate design is the use of round arched windows. Windows such as these are found on many Italianate residences from the 1850s through the 1870s. (McAlester, pp 210-237) This type of window was adopted for commercial design in the 1850s and was commonly used in Iowa following the Civil War. Early examples often feature simple, brick patterned arches such as those found on the McClellan building, while later, high style, examples often feature elaborate cast stone or cast iron horseshoe-shaped hoodmolds. The elaborate examples with cast hoodmolds were very popular during the 1870s and examples can be found on the Centennial Block in Oskaloosa, the Lilburn Building in Ottumwa, and the Perry Opera House in Albia.

Simple brick patterned arches were often used for commercial buildings in small communities, and for small, single storefront buildings. The round arches were one way of giving the building a touch of "high style" without a great deal of expense. The application of a single detail like this to a simple rectangular building is sometimes referred to as a vernacular example of the style. This was common in small towns across the country, not just in the Midwest.

The original storefront would have had iron columns and pilasters, with a recessed central entrance flanked by plate glass display windows. These elements appear to be intact beneath the present façade. The continued use of a gable roof for commercial purposes was common as late as the 1880s. The exterior iron stairway to the second floor was also a common element, keeping the two different functions as separate as possible.

Two buildings similar to the McClellan Building are located in the same block. Two doors east at 113 East Main is the Perry Frank building which was built in 1871 or '72 for Frank's store. He was listed as a druggist and dealer in boots and shoes. Across the street at 100 East Main is the Smith & Weller Building, also known as the Knights of Pythias Hall. This was built sometime c.1875. All three buildings are two story brick rectangles with the round arched windows of the Italianate style. These buildings stand as the gateway to the New London business district from the east.

These three Italianate buildings in the 100 block of East Main Street are very similar to three National Register buildings in Mount Pleasant, just nine miles away: The Brazelton House Hotel (1856); the Union Block (1861); and the McCandless Building (1862). Listed on the National Register in 1986 and 1991, the Mount Pleasant buildings, like those in New London, were built following the arrival of both the Plank Road and the Burlington and Missouri River Railroad. They illustrate a major expansion of the business district. No identification has been made as to builder and/or mason for the Mount Pleasant buildings, but they illustrate that this was a popular style that had been quickly adopted in this area.

James McClellan and his wife Adeline arrived in Henry County in 1856 from their home state of Indiana. He had been trained as a machinist, and after arriving in New London he was employed running stationary engines for several years. In 1865 he purchased Lot 6, Block 2 of Mullin's 1<sup>st</sup> Addition (107 East Main) for \$365. Two years later (1867) he entered the mercantile business, dealing in groceries, etc. It appears that the present brick building was constructed sometime between 1865 and 1867. In 1875 he added dry goods to his inventory, and it was probably at that time that the business became

United States Department of the Interior  
National Park Service

# National Register of Historic Places Continuation Sheet

Section number 8

Page 11

McClellan's General Store  
Henry County, Iowa

---

known as McClellan and Stottard Dry Goods Store. The second floor of the building served as the McClellan family residence for a number of years. It is said that Mrs. McClellan was quite familiar with the medicinal properties of most of the herbs found in the area, and would prescribe these herbs for those in need of healing. Mr. McClellan served as the Town Treasurer for almost two decades, and spent a dozen years on the local school board. An 1888 biography said of him, "No man in New London has a better record as an honorable and upright man and merchant than James McClellan." (Portrait and Biographical Albums of Henry County, Iowa, p 449)

The McClellan's only child, daughter Emma, met her future husband (Melville C. Leach) when he came to New London in 1880 to work in the McClellan store. Both the post office (Leach was the postmaster) and telephone office were located in the building in the 1890s. At the turn of the century Joe Shields was the owner of the store, and professional offices (a dentist and an attorney) were located on the second floor. From 1925-42 the building housed Elliott's Mortuary on the first floor with the Elliott residence on the second. During the 1940s and '50s a hardware store occupied the first floor.

The town of New London has prospered from its earliest days by being located on major transportation routes, both a highway and a railroad. The McClellan Building, and the two similar buildings in the same block, speak to the early days of these routes and the importance of transportation to the community. Simple Italianate commercial buildings are becoming rare, and examples such as these in New London need to be recognized.

United States Department of the Interior  
National Park Service

National Register of Historic Places  
Continuation Sheet

Section number 9

Page 12

McClellan's General Store  
Henry County, Iowa

---

BIBLIOGRAPHY

- Abstract of Title, Mullen's Addition, Block 2, Lot 6, New London, Iowa.
- Andreas, A.T. Illustrated Historical Atlas of the State of Iowa. Chicago: A.T. Andreas Co., 1875.
- Bennett Fire Insurance Map of New London. 1898, April 1905.
- Brooks and Whiting. Atlas, Henry County, Iowa 1895. St. Louis: W.E. Stephens & Co., 1895.
- Combination Atlas Map of Henry County, Iowa. Geneva, IL: Thompson & Everts, 1870.
- Henn, Williams & Co. A Township Map of the State of Iowa. Burlington, IA: J.F. Abrams, Publisher, 1851.
- Henry County Deed Records. Recorder's Office, Henry County Courthouse, Mount Pleasant, IA.
- New London Journal*. New London, IA. Various issues from 1875 through 1950.
- Mathews, Frank. "Interesting Incidents Relating to the Early Territorial Days." Unpublished manuscript, no date.
- Ogle, George A. Standard Atlas of Henry County, Iowa Including a Plat Book. Chicago: George A. Ogle & Co., 1917.
- Overton, Richard C. Burlington Route: A History of the Burlington Railroad Lines. New York: Alfred A. Knopf, 1965.
- \_\_\_\_\_. Burlington West: A Colonization History of the Burlington Railroad. Cambridge, MA: Harvard University Press, 1941.
- Peterson, Ruth DeLong. History of New London, Iowa, Centennial Edition, 1875-1975. Supplement to the *New London Journal*, 1975, p 192.
- Portrait and Biographical Album of Henry County, Iowa. Chicago: Acme Publishing Co., 1888, p 446.
- Sanborn Fire Insurance Map of New London. May 1916, June 1930, June 1930- .
- Senate Documents, 26<sup>th</sup> Congress, 1<sup>st</sup> Session. 7 July 1840. Relating to the construction of Certain roads in the Territory of Iowa.



United States Department of the Interior  
National Park Service

National Register of Historic Places  
Continuation Sheet

Section number 9

Page 13

McClellan's General Store  
Henry County, Iowa

---

Wilson, Ben Hur. "The Genesis of Planking," "The Boom in Iowa," "Planked in Places,"  
Palimpsest, Vol XV, No 9, Sept 1934, pp 289-318.

\_\_\_\_\_. "Burlington Westward," "Planked from Burlington," and "From Planks to Rails,"  
Palimpsest, Vol XVI, No 10, Oct 1935, pp 97-106.

Young, Donald. From High Grass to High Henry: Henry County, Iowa. Privately Published,  
1987.

**United States Department of the Interior  
National Park Service**

# **National Register of Historic Places Continuation Sheet**

Section number **10** Page 14

**McClellan's General Store  
Henry County, Iowa**

---

**GEOGRAPHIC DATA:**

**Verbal Boundary Description:**

Mullen's Addition to New London (Henry County), Iowa, Block 2, Lot 6.

**Boundary Justification:**

This is the area historically associated with this resource.

**United States Department of the Interior  
National Park Service**

**National Register of Historic Places  
Continuation Sheet**

Section number   **Photos**   Page   15

**McClellan's General Store  
Henry County, Iowa**

---

The photographs submitted with this nomination were taken by Donald Young of the Henry County Historic Preservation Commission in November 2002. The negatives are in the files of the State Historical Society, Community Programs Bureau, Des Moines, IA.

1.      Façade and west elevation looking northeast
2.      Façade and east elevation looking northwest
3.      Rear (north) and east elevations looking southwest