

**United States Department of the Interior  
National Park Service**

**National Register of Historic Places  
Continuation Sheet**

Section number \_\_\_\_\_ Page \_\_\_\_\_

**SUPPLEMENTARY LISTING RECORD**

**NRIS Reference Number:** 9300032

**Date Listed:** 2/22/93

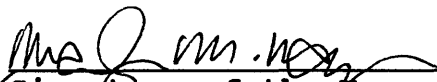
Long Creek School  
**Property Name**

Macon  
**County**

TENNESSEE  
**State**

Education Related Properties of Macon Co. MPS  
**Multiple Name**

-----  
**This property is listed in the National Register of Historic Places in accordance with the attached nomination documentation subject to the following exceptions, exclusions, or amendments, notwithstanding the National Park Service certification included in the nomination documentation.**

*for*   
**Signature of the Keeper**

3/26/93  
**Date of Action**

=====  
**Amended Items in Nomination:**

Section No. 8

This nomination was amended to show the period of significance as extending from 1885 (the date of construction) to 1923 (the date when the building was moved on its original lot to its present location). The property meets the requirements for Criteria Consideration B, for moved buildings.

These changes have been confirmed by phone with the Tennessee SHPO (3/26/93).

**DISTRIBUTION:**

- National Register property file**
- Nominating Authority (without nomination attachment)**

United States Department of the Interior  
National Park Service

National Register of Historic Places  
Registration Form

RECEIVED  
JAN 11 1993  
REGISTER

This form is for use in nominating or requesting determinations for individual properties and districts. See instructions in *How to Complete the National Register of Historic Places Registration Form* (National Register Bulletin 16A). Complete each item by marking "x" in the appropriate box or by entering the information requested. If an item does not apply to the property being documented, enter "N/A" for "not applicable." For functions, architectural classification, materials, and areas of significance, enter only categories and subcategories from the instructions. Place additional entries and narrative items on continuation sheets (NPS Form 10-900a). Use a typewriter, word processor, or computer, to complete all items.

1. Name of Property

historic name Long Creek School

other names/site number N/A

2. Location

street & number Long Creek Road  N/A not for publication

city or town Lafayette  vicinity

state Tennessee code TN county Macon code 111 zip code 37083

3. State/Federal Agency Certification

As the designated authority under the National Historic Preservation Act, as amended, I hereby certify that this  nomination  request for determination of eligibility meets the documentation standards for registering properties in the National Register of Historic Places and meets the procedural and professional requirements set forth in 36 CFR Part 60. In my opinion, the property  meets  does not meet the National Register criteria. I recommend that this property be considered significant  nationally  statewide  locally. ( See continuation sheet for additional comments.)

*Herbert L. Hays*

1/6/93

Signature of certifying official/Title Deputy State Historic Preservation Officer, Tennessee Historical Commission  
State of Federal agency and bureau State of Tennessee

In my opinion, the property  meets  does not meet the National Register criteria. ( See continuation sheet for additional comments.)

Signature of certifying official/Title \_\_\_\_\_ Date \_\_\_\_\_

State or Federal agency and bureau \_\_\_\_\_

4. National Park Service Certification

I hereby certify that the property is:

- entered in the National Register.  See continuation sheet.
- determined eligible for the National Register.  See continuation sheet.
- determined not eligible for the National Register.
- removed from the National Register.
- other, (explain:)

for Signature of the Keeper  
*Mary M. Now*

Date of Action

2/22/93

Long Creek School  
Name of Property

Macon County, TN  
County and State

**5. Classification**

**Ownership of Property**  
(Check as many boxes as apply)

- private
- public-local
- public-State
- public-Federal

**Category of Property**  
(Check only one box)

- building(s)
- district
- site
- structure
- object

**Number of Resources within Property**  
(Do not include previously listed resources in the count.)

Contributing	Noncontributing	
1		buildings
		sites
		structures
		objects
1		Total

**Name of related multiple property listing**  
(Enter "N/A" if property is not part of a multiple property listing.)

Education Related Properties of Macon Co., TN

**Number of contributing resources previously listed in the National Register**

0

**6. Function or Use**

**Historic Functions**  
(Enter categories from instructions)

EDUCATION: school

**Current Functions**  
(Enter categories from instructions)

SOCIAL: meeting hall

**7. Description**

**Architectural Classification**  
(Enter categories from instructions)

OTHER: Schoolhouse

**Materials**  
(Enter categories from instructions)

foundation Stone

walls Weatherboard

roof Metal

other Wood

**Narrative Description**

(Describe the historic and current condition of the property on one or more continuation sheets.)

8. Statement of Significance

Applicable National Register Criteria

(Mark "x" in one or more boxes for the criteria qualifying the property for National Register listing.)

- A Property is associated with events that have made a significant contribution to the broad patterns of our history.
B Property is associated with the lives of persons significant in our past.
C Property embodies the distinctive characteristics of a type, period, or method of construction or represents the work of a master, or possesses high artistic values, or represents a significant and distinguishable entity whose components lack individual distinction.
D Property has yielded, or is likely to yield, information important in prehistory or history.

Criteria Considerations

(Mark "x" in all the boxes that apply.)

Property is: N/A

- A owned by a religious institution or used for religious purposes.
B removed from its original location.
C a birthplace or grave.
D a cemetery.
E a reconstructed building, object, or structure.
F a commemorative property.
G less than 50 years of age or achieved significance within the past 50 years.

Areas of Significance

(Enter categories from instructions)

ARCHITECTURE

Period of Significance

1885

Significant Dates

1885, 1923

Significant Person

(Complete if Criterion B is marked above)

N/A

Cultural Affiliation

N/A

Architect/Builder

UNKNOWN

Narrative Statement of Significance

(Explain the significance of the property on one or more continuation sheets.)

9. Major Bibliographical References

Bibliography

(Cite the books, articles, and other sources used in preparing this form on one or more continuation sheets.)

Previous documentation on file (NPS): N/A

- preliminary determination of individual listing (36 CFR 67) has been requested
previously listed in the National Register
previously determined eligible by the National Register
designated a National Historic Landmark
recorded by Historic American Buildings Survey #
recorded by Historic American Engineering Record #

Primary location of additional data:

- State Historic Preservation Office
Other State agency
Federal agency
Local government
University
Other

Name of repository:



United States Department of the Interior  
National Park ServiceNational Register of Historic Places  
Continuation SheetSection number 7 Page 1Long Creek School  
Macon County, TN

## DESCRIPTION

Located outside of town of Lafayette on Long Creek Road, in the first civil district, in the center of Macon County, is the Long Creek School built circa 1885. The school was built on land owned by the Johnson family with material donated by the Johnson family and with donated labor from community. The rectangular-plan school building is covered with weatherboard and has a front facing gable roof of corrugated metal. The building sits two feet above the ground and is supported by stone piers. There is a wood stove vent brick chimney in the center of the ridgeline.

The school originally sat about twenty-five feet further south than the existing site. Circa 1923, the building was rolled up the slight incline with the same orientation as on the original site. The move was made as a result of a new roadbed for Long Creek Road and the land needed for water drainage. The road was relocated in the late 1920s, because of its proximity to Long Creek.

Facing east, the facade of the schoolhouse is one bay wide. The centered, multi-pane door is not original but probably dates to the late 1920's when the school was moved. The entrance, including four (4) simple wooden steps and hand-rail, is the only architectural detail on this elevation.

The north and south elevations of the building are identical, both have three (3) four-over-four wooden double-hung sash windows. The windows on the south elevation are currently protected by simple plain board shutters. There are four dry-stone piers supporting each side.

The west elevation of the school is a solid wall. The ghost from a center exterior wood-fire chimney, no longer extant, is visible on the weatherboard siding. The chimney was removed and the wall repaired with like material, when the heating system was changed, circa 1915, to an interior stove. The 1915 system is still used to heat the building.

The interior of the Long Creek School is one room. The walls are sided with beaded board except for the blackboard areas. The blackboards consist of six inch wide flush boards which were originally painted black. The size of the blackboards range from eight inches above the floor, level with the teach's platform, to about the six foot level and surround the teachers platform. The teacher's platform is a raised section of the floor encompassing one-fourth of the floor space in the building, or about ten feet by twenty feet. It is raised eight inches above the rest of the wooden flooring. The student's floor area has been carpeted, but the

United States Department of the Interior  
National Park ServiceNational Register of Historic Places  
Continuation SheetSection number 7 Page 2Long Creek School  
Macon County, TN

---

teachers platform remains uncovered. There are two built-in shelves on the rear walls which students used as coat and lunch storage areas. There is also a built-in wall shelf unit on the south wall of the teachers platform.

Mr. "Doc" Johnson, who attended school at Long Creek as did the rest of his siblings, describes the interior as he remembered his school day as follows:

The teacher had a desk in the center of the teachers platform with storage shelves built on the south side wall. A bench running almost the width of the building sat at the foot of the teachers platform, it was in this area that the class being taught was held. The rest of the students sat on long benches several feet behind the teaching bench. The "dunce corner" was the north west corner of the teachers platform and Mr. Johnson recalled spending several uncomfortable days trying to keep his nose in the circle on the wall, which was just a bit higher than he could reach.

United States Department of the Interior  
National Park Service

# National Register of Historic Places Continuation Sheet

Section number 8 Page 3

Long Creek School  
Macon County, TN

---

## STATEMENT OF SIGNIFICANCE

The Long Creek School is being nominated under criterion C for its local architectural significance to Macon County as a good example of a one-room frame school built around 1885. The school was built on land donated by the Johnson family with materials and labor supplied by the community. The building served the rural Long Creek community as both a center for local events and education.

The building was moved about twenty-five feet west, in 1923, to accommodate the new road bed. The building was used by the county as a rural one room school until May 1950. Since the closing of the school the structure has been used by the Home Demonstration Club as well as for community functions.

Long Creek Schoolhouse is associated with the development of Small Rural Schools in Macon County, Tennessee. It is of a traditional form following Alcott early school designs. The building is representative of the one room school that has remained unaltered. The building retains a high degree of integrity and meets the registration requirements of the MPDF Education Related Properties of Macon County.



United States Department of the Interior  
National Park Service

National Register of Historic Places  
Continuation Sheet

Section number 9 Page 4

Long Creek School  
Macon County, TN

---

MAJOR BIOGRAPHICAL REFERENCES

Blankenship, Harold G. History of Macon County, Tennessee. Tompkinsville, Ky.: Monroe County Press, 1986.

Blankenship, Harold G. Retired School Teacher, Galen, Tennessee. Interview, 22 June 1991.

Johnson, Doc. Retired Farmer, Long Creek Community, Tennessee. Interview, 22 May 1992.

United States Department of the Interior  
National Park Service

**National Register of Historic Places  
Continuation Sheet**

Section number 10 Page 5

Long Creek School  
Macon County, TN

---

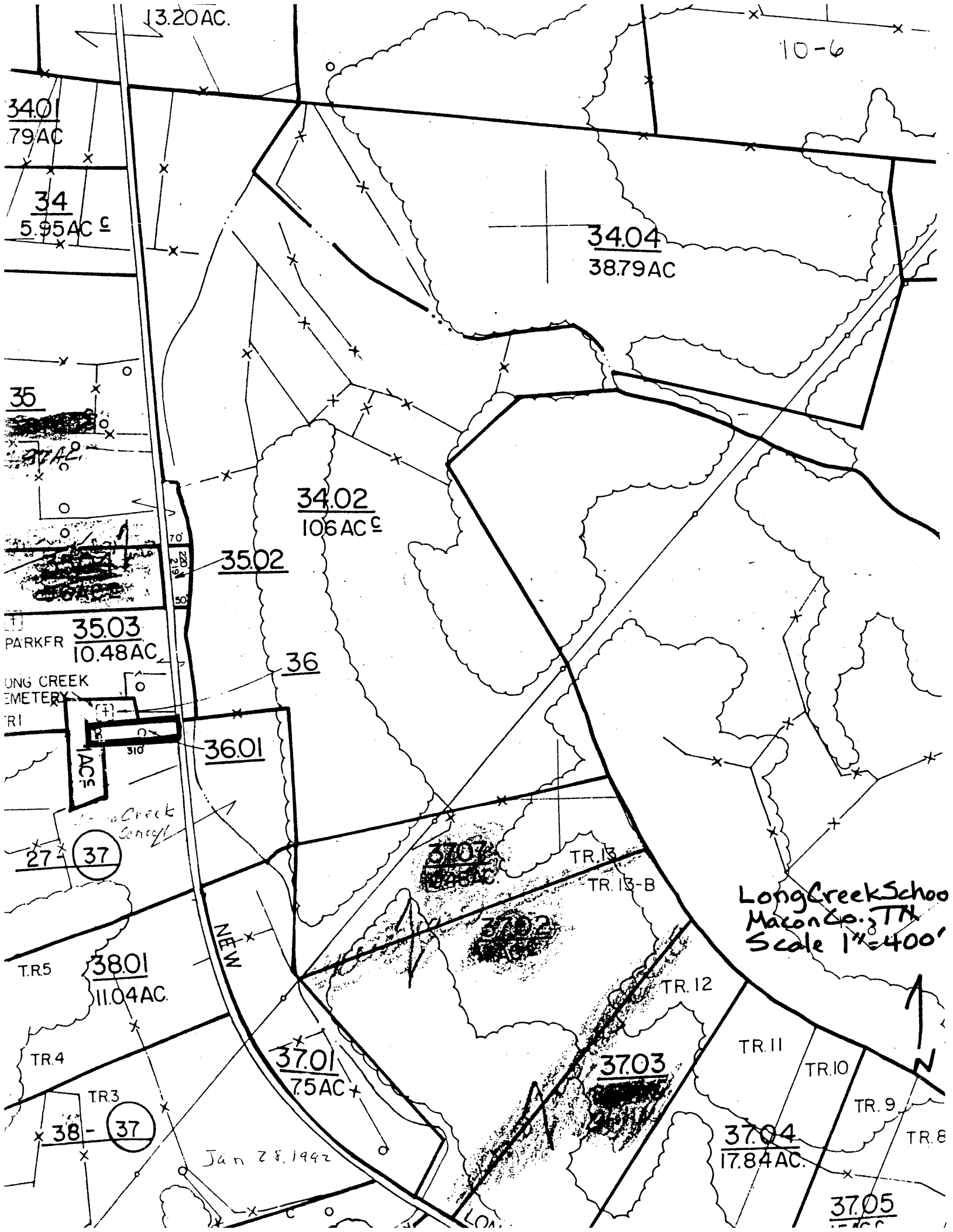
VERBAL BOUNDARY DESCRIPTION

The boundaries for Long Creek School include all of lot 36.01 as shown on the Macon County tax map.

The tax map for this nomination has the scale 1" = 400'. This scale tax map is prepared by the Tennessee State Board of Equalization for rural areas. In the past, the Tennessee Historical Commission has used this scale map for nominations and has found that the 1" = 400' adequately meets our office needs. The Tennessee Historical Commission does not have the facilities to prepare maps to the scale preferred by the National Park Service.

BOUNDARY JUSTIFICATION

The boundaries are sufficient to protect the integrity of the property and include the property historically associated with the school.



13.20AC.

10-6

34.01  
79AC

34  
5.95AC E

34.04  
38.79AC

35  
27AC

34.02  
106AC E

35.02

PARKFR  
35.03  
10.48AC

36

LONG CREEK  
CEMETERY

36.01

27 (37)

37.01  
12.45AC

TR. 13  
TR. 13-B

Long Creek School  
Macon Co., TN  
Scale 1" = 400'

T.R. 5  
38.01  
111.04AC

N. R. 11

TR. 12

TR. 4  
TR. 3  
38- (37)

37.01  
75AC

TR. 11

TR. 10

TR. 9

TR. 8

Jan 28, 1942

37.04  
17.84AC

37.05

United States Department of the Interior  
National Park Service

National Register of Historic Places  
Continuation Sheet

Section number Photos Page 7

Long Creek School  
Macon County, TN

---

Long Creek School  
Lafayette vicinity, Macon County, Tennessee  
Photograph by: Nancy Jane Baker  
Date: May 1992  
Negatives: Tennessee Historical Commission

East (front) facade, facing west  
1 of 8

South elevation, facing north  
2 of 8

West elevation, facing east  
3 of 8

North elevation, facing south  
4 of 8

East facade gable-end entrance door facing west  
5 of 8

Pier support northeast corner of east facade, facing west  
6 of 8

Interior detail of flush board blackboard  
7 of 8

Interior detail of coat/lunch shelve  
8 of 8