

Apartment Hotels in Birmingham, Alabama 1900-1930
Thematic Group Nomination

2. HIGHLAND PLAZA APARTMENTS

2250 Highland Avenue South
Birmingham, Jefferson County

Owner: Hillmark Corporation
6425 Odana Rd.
Madison, WI 53719

UTM: 16/519520/3706850

Legal Description: Lot 3, Blk 749,
less ... pt in Red Mnt. Express.
R/W 100' on Highland Ave. & Extend.
back of uniform width, 100' x 200'

Acreage: .46

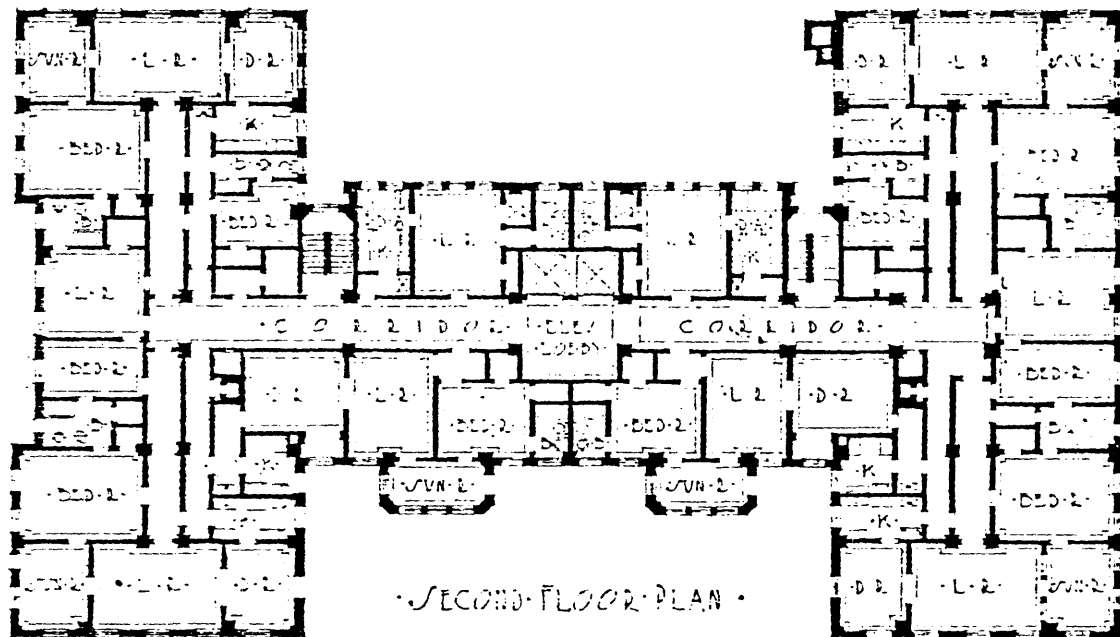
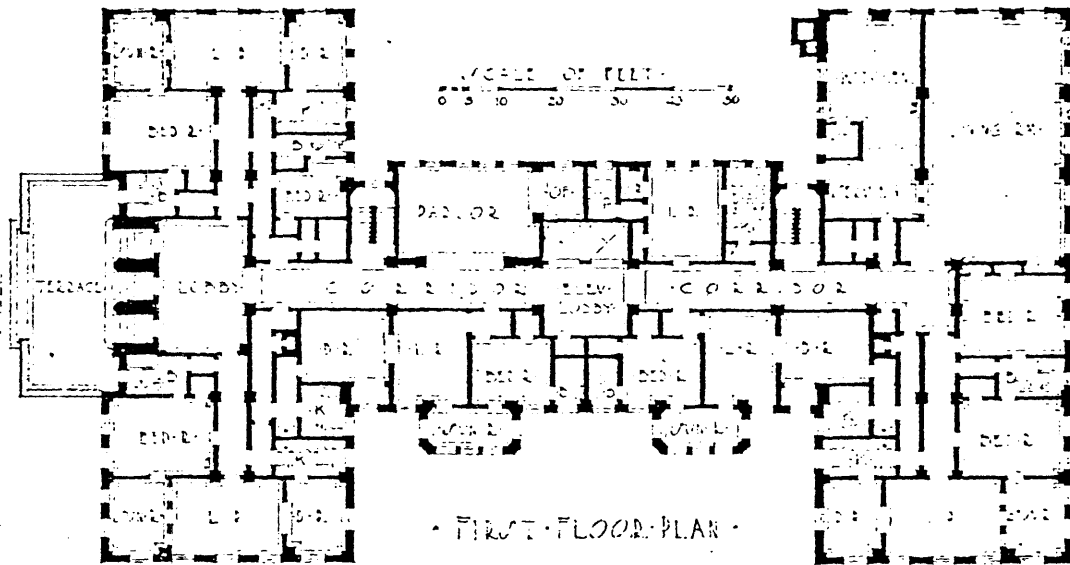
c. 1924

Architect: Denham, Van Kueren, & Denham

Significance and History: This is one of the finest and most intact examples of 1920s apartment hotels in the city. It is distinguished by its fine exterior detailing and its Beaux Arts plan and design.

It was constructed by the Smallman Brice Construction Company from plans provided by Denham, Van Kueren, & Denham.

Description: The Highland Plaza is an 8-story building faced in deep red brick and stone with cream colored terra cotta details. It was designed in an H-shape Beaux Arts plan and design. Its south side (the main entrance) faces Highland Avenue and fronts onto a brick and granite courtyard which stretches from the sidewalk to the front entrance and enhances the pedestrian mood as well as the architecture. The first floor windows are arched on either side of the classically detailed entrance; they are similarly arched on the top floor. On the eighth floor, only on the east side, are a pair of classically designed balconies. On the structure's top is a simple classical cornice with dentil molding. Significant interior features include crown molding.



PLAN OF HIGHLAND PLAZA APARTMENTS, BIRMINGHAM, ALA.
DENHAM, VAN KUEREN & DENHAM, ARCHITECTS

10 X 200



Apartment Hotels in Urban Areas - Highland Plaza Apartments - Inventory # 3
 Date 11-400