



DON PRATT HOTEL

MANOR

HOMER

DON PRATT HOTEL

Don Pratt Hotel, Belle Fourche
Commercial Historic District
Belle Fourche, South Dakota
LeEllen Coacher

8-80

Historical Preservation Center
Facing south

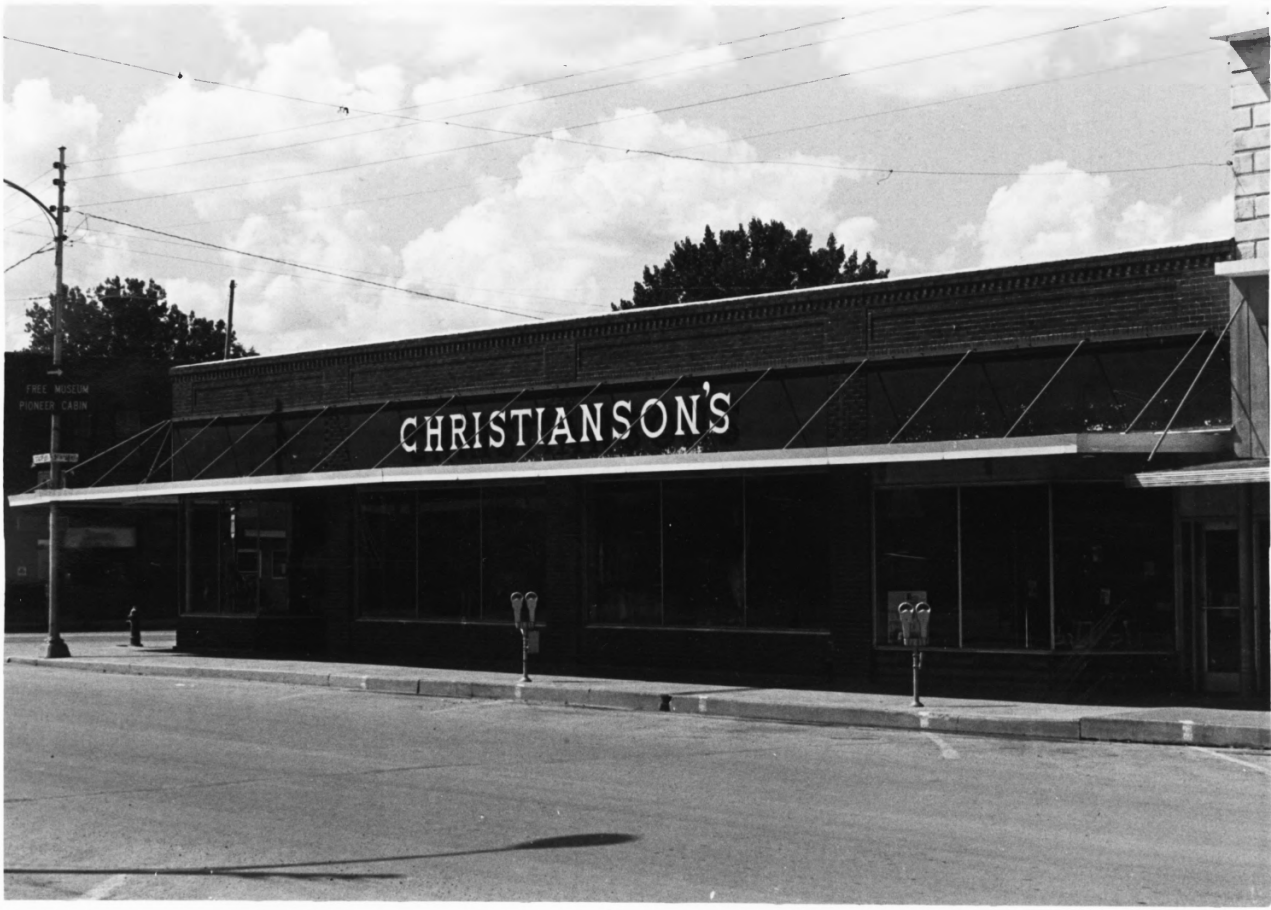
Photo #1

620 State Street

CHRISTIANSON'S

FREE MUSEUM
PIONEER CABIN

W. 1ST ST.



Christiansons, Belle Fourche Commercial

Historic District

Belle Fourche, South Dakota

LeEllen Coacher

501 State St.

8-80

Historical Preservation Center

Facing Northwest

Photo # ~~1~~



BEN FRANKLIN

WARDS

THOM

Streetscape, Belle Fourche

Commercial Historic District

Belle Fourche, South Dakota

LeEllen Coacher

8-80

Historical Preservation Center

Facing west

Photo #12



C. Anderson's

NEW STATE ST

JCT
212

Feet First
SHOES

Belle Fourche
OPTICAL



Christiansons, Belle Fourche Commercial

Historic District

Belle Fourche, South Dakota

LeEllen Coacher

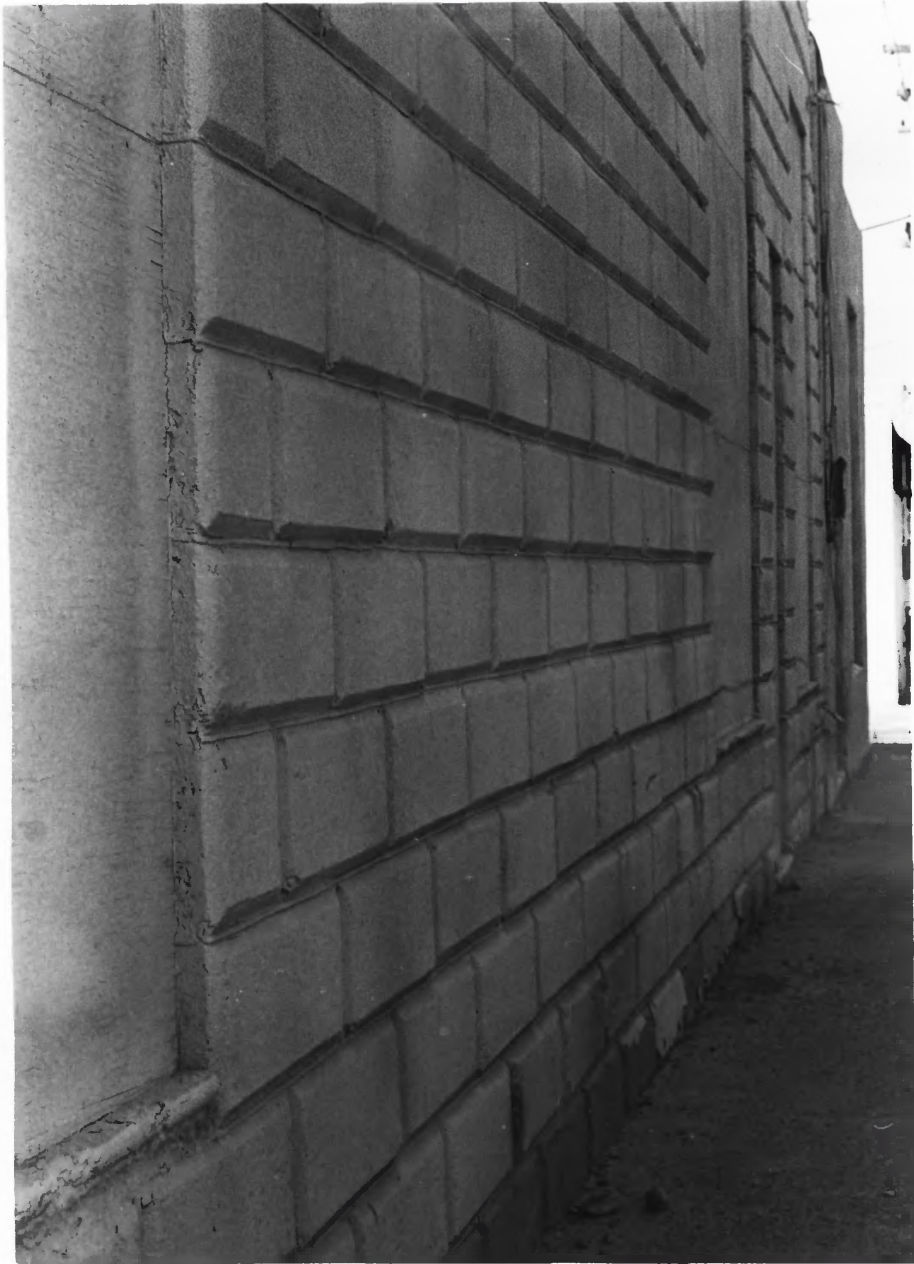
8-80

501 State

Historical Preservation Center

Facing Northeast

Photo #23



Gay Building, Belle Fourche Commercial

Historic District

Belle Fourche, South Dakota

LeEllen Coacher

8-80

Historical Preservation Center

Facing north Detail: cement Blocks

Photo #2 *Y*



GAY

HODGE BOOTERY
• BOOTS • LEATHER GOODS

WESTERN WEAR

15

Gay Building, Belle Fourche Commercial
Historic District

Belle Fourche, South Dakota

LeEllen Coacher

8-80

507 State

Historical Preservation Center

Facing Northwest

Photo #15



TOTAL HARDWARE

Coast to Coast

COAST TO COAST
STORE

Townsend Building, Belle Fourche

Commercial Historic District

Belle Fourche, South Dakota

LeEllen Coacher

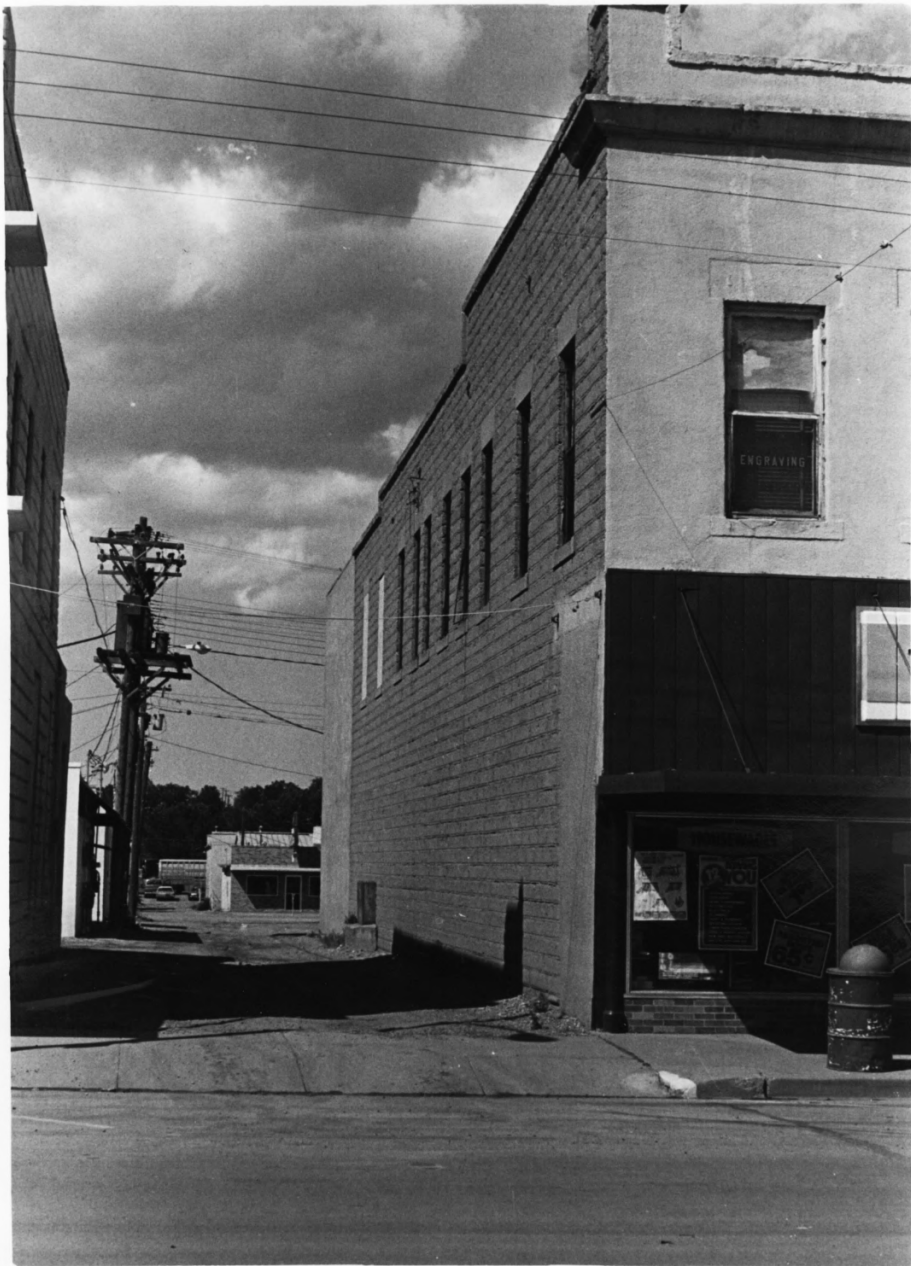
8-80

Historical Preservation Center

Facing northwest

Photo #16

515 State



Townsend Building, Belle Fourche
Commercial Historic District
Belle Fourche, South Dakota
LeEllen Coacher
Historical Preservation Center
Facing north
Photo #2 >

515

State



Townsend Building, Belle Fourche

Commercial Historic District

Belle Fourche, South Dakota

LeEllen Coacher

8-80

Historical Preservation Center

Facing north

Photo #28 Detail: cement blocks



st

RESTAURANT

JC Penney's, Belle Fourche Commercial
Historic District

Belle Fourche, South Dakota

LeEllen Coacher

8-80

Historical Preservation Center

Facing northwest

Photo #19 517 State St.



THOMAS
DRUG

CLIFF
THOMAS DRUG

THOMAS DRUG

STATE ST

Thomas Drug, Belle Fourche Commercial
Historic District

Belle Fourche, South Dakota

LeEllen Coacher

8-80

521 State Street

Historical Preservation Center

Facing northwest

Photo #10



Rae Ann's-Bonnie's, Belle Fourche

Commercial Historic District

Belle Fourche, South Dakota

LeEllen Coacher

8-80

Historical Preservation Center

Facing north

Photo #11

519 State St.



BECKERS DRUGS

Walgreen Agency

CHRISTY'S
Barber Shop

Christy's
Barber Shop

Telephone
Number
357

I00F-Becker's Drugs, Belle Fourche

Commercial Historic District

Belle Fourche, South Dakota

LeEllen Coacher

8-80

Historical Preservation Center

Facing northwest

Photo #12 607 State Street



BLOCK
INCOME TAX

WARDS

Wards, Belle Fourche Commercial

Historic District

Belle Fourche, South Dakota

LeEllen Coacher

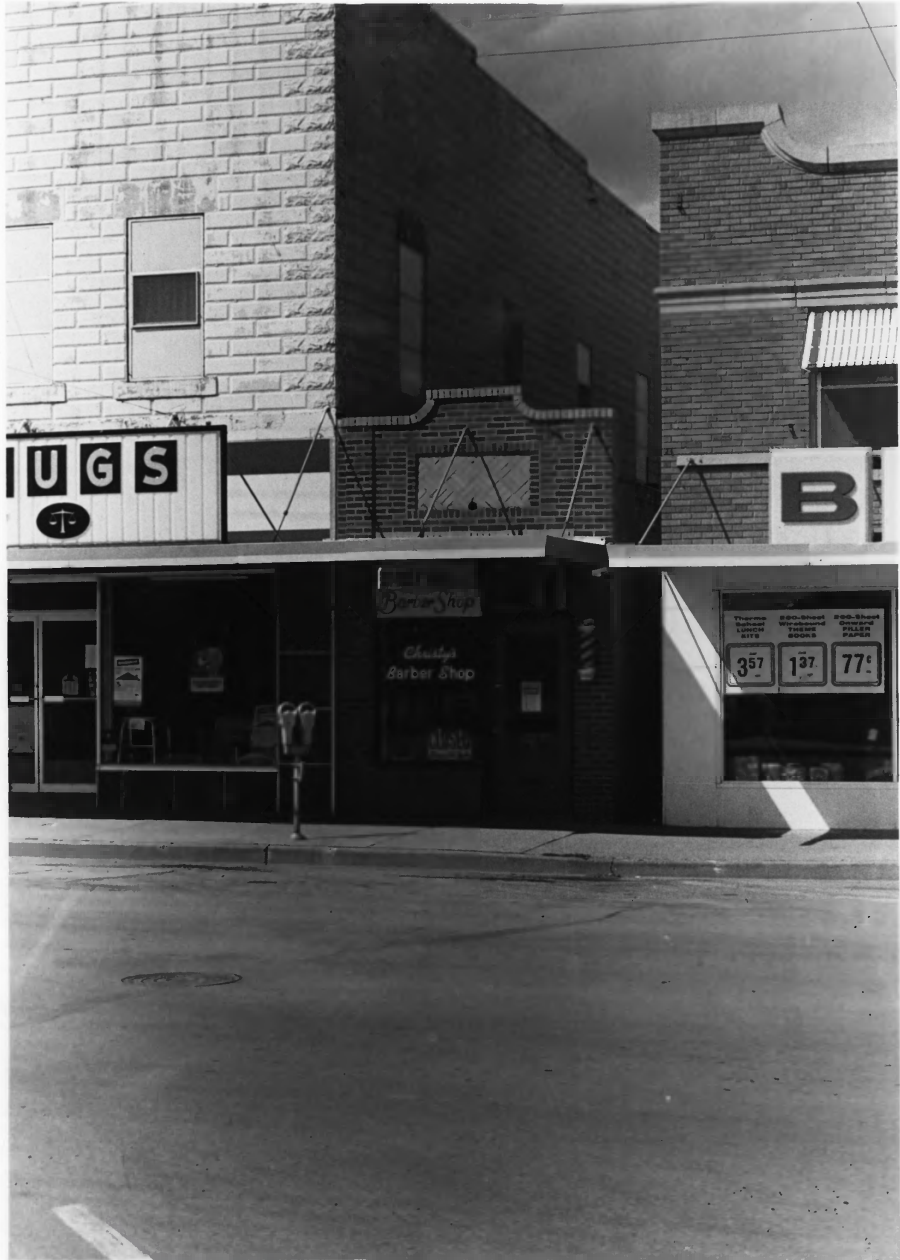
8-80

Historical Preservation Center

Facing northeast

Photo #13

603 Stace Street



BUGS
T

B

Barber Shop

Charles
Barber Shop

Three Hole 1000 SITS	200 Sheet Wired 1000 BOOKS	200 Sheet Covered 1000 PAPER
357	137	77c

Barbershop, Belle Fourche

Commercial Historic District

Belle Fourche, South Dakota

LeEllen Coacher

8-80

Historical Preservation Center

Facing north

Photo #14

609 State Street



BELLE

BEN FRANKLIN

39¢ 39¢ 77¢ 67¢ 67¢ 79¢

IT'S CANNING TIME

SALE 27¢

3¢ 4¢

IT'S CANNING TIME

Belle Building, Belle Fourche
Commercial Historic District

Belle Fourche, South Dakota

LeEllen Coacher

8-80

Historical Preservation Center

Facing northwest

Photo #15 613 State Street



Decorative brickwork on the upper story of the building.

Sign hanging from scaffolding, partially legible text includes "Scaffolding" and "E. W. W. W."

Small sign on the left side of the building, partially legible text includes "Scaffolding"

Sign on the right side of the building, partially legible text includes "Scaffolding"

Jewelry Store, Belle Fourche Commercial
Historic District

Belle Fourche, South Dakota

LeEllen C Geacher

8-80

Historical Preservation Center

Facing North

615 State St.

Photo #216 Detail: Metal Facade



Jewelry Store, Belle Fourche Commercial
Historic District

Belle Fourche, South Dakota

LeEllen Coacher

8-80

Historical Preservation Center

Facing North

Photo #17

615 State St.



Beckers Flowers, Belle Fourche

Commercial Historic District

Belle Fourche, South Dakota

LeEllen Coacher

8-80

Historical Preservation Center

Facing Northwest

Photo #18

619 State Street



Hitchin' Post, Belle Fourche

Commercial Historic District

Belle Fourche, South Dakota

LeEllen Coacher

8-80

Historical Preservation Center

Facing Southeast

Photo #19

500 St. Street



GRONC
MOTEL
2 1/2 BLKS

HUE

SALE

MAIL BOX
8 8

Hitchin' Post Belle Fourche

Commercial Historic District

Belle Fourche, South Dakota

LeEllen Coacher

8-80

Historical Preservation Center

Facing Southeast

Photo #20

500

State Street

The Hut



The Hut, Belle Fourche Commercial
Historic District

Belle Fourche, South Dakota

LeEllen Coacher

8-80

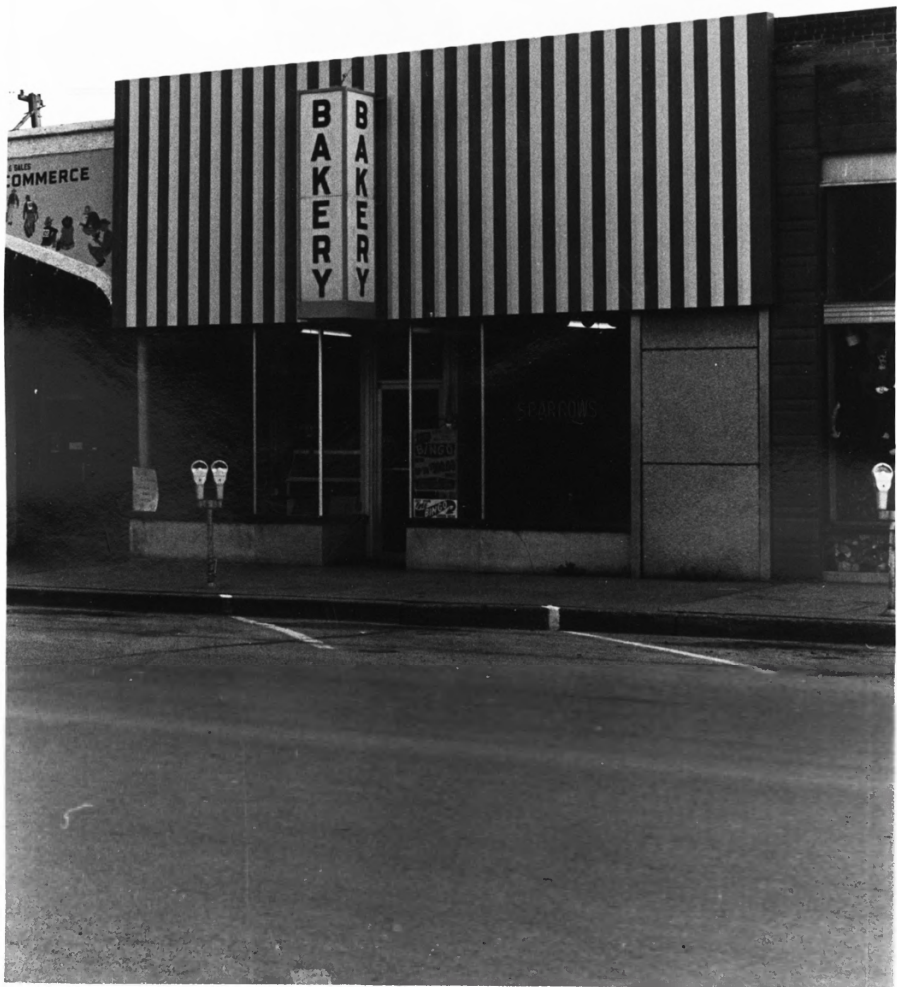
Historical Preservation Center

Facing south

Photo #21

502

State Street



BAKERY

COMMERCE

Sparrow's Bakery, Belle Fourche
Commercial Historic District
Belle Fourche, South Dakota
LeEllen Coacher
8480

Historical Preservation Center
Facing southeast

Photo #22 508 State Street

The HUB

Progressive Sales for Progress

Knock
Out

SPORT
WEAR
SALES
OFF

SALES
OFF



The Hub, Belle Fourche Commercial
Historic District

Belle Fourche, South Dakota

LeEllen Coacher

8-80

Historical Preservation Center

Facing South

Photo #23 506 State Street

WESTERN WAY

TRI-STATE FAIR & SALES
CHAMBER OF COM



Phone

TE



Western Way, Belle Fourche Commercial
Historic District

Belle Fourche, South Dakota

LeEllen Coacher

8-80

Historical Preservation Center

Facing South East

Photo #224 512 State Street



THIRTY-STATE FAIR & SALES
CHAMBER OF COMMERCE

AY

PHONE

Small sign in the window, illegible text.

Chamber of Commerce, Belle Fourche

Commercial Historic District

Belle Fourche, South Dakota

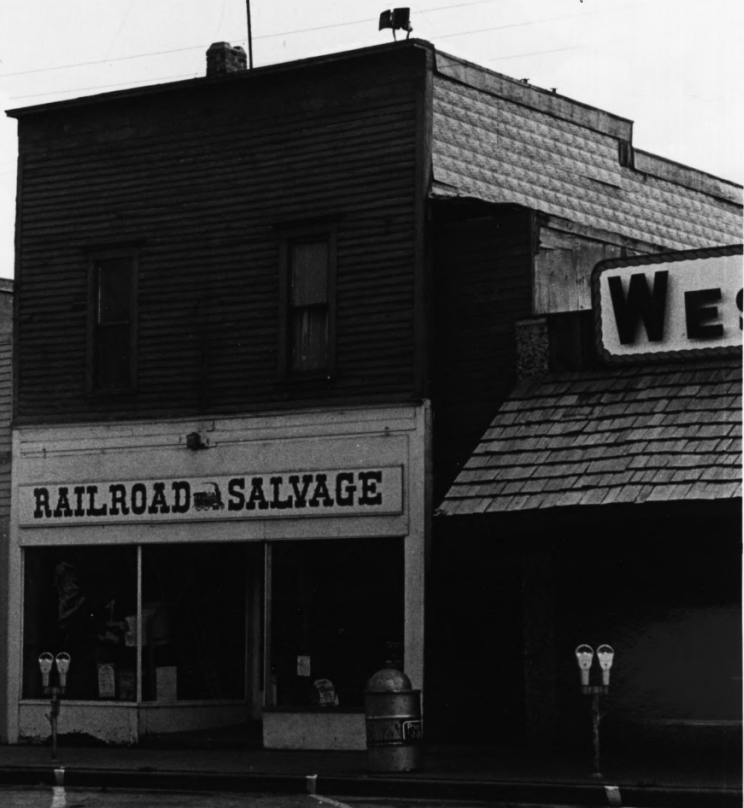
LeEllen Coacher

8-80

Historical Preservation Center

Facing Southeast

Photo #1 25 510 State Street



RAILROAD SALVAGE

WEST

Railroad Salvage, Belle Fourche

Commercial Historic District

Belle Fourche, South Dakota

LeEllen Coacher

8-80

Historical Preservation Center

Facing southeast

Photo # 224

514 state street



Railroad Salvage, Belle Fourche
Commercial Historic District

Belle Fourche, South Dakota
LeEllen Coacher

8-80

Historical Preservation Center
Facing east

Photo #27 Detail: Metal siding



545

12
11
10
9
8
7
6
5

Dunwoody Jewelry, Belle Fourche
Commercial Historic District
Belle Fourche, South Dakota
LeEllen Coacher
8-80
Historical Preservation Center
Facing south
Photo #28 Detail: Glass window



NEWBY
JEWELRY

WALK-INS
NO APPOINTMENTS

BACK
TO
SCHOOL
Starts at
9:00 a.m.

R

Dunwoody Jewelry, Belle Fourche
Commercial Historic District
Belle Fourche, South Dakota
LeEllen Coacher
8-80
Historical Preservation Center
Facing south
Photo #29 516 Stalp Street

Point
COULD
\$248²⁷
GAS BILLS
RANGER "56"
NEW HEATER



Dunwoody Jewelry, Belle Fourche
Commercial Historic District
Belle Fourche, South Dakota
LeEllen Coacher
8-80
Historical Preservation Center
Facing south
Photo #30 Detail: door



SEARS
Chicago
 CATALOG SALES
 MERCHANT
 LEST FIBRE

SHIPPEN
 AND W. CO.
 TIRES & WHEELS
 1 350

BACK TO
STREET
 Store at
 Sears



Sears, Belle Fourche Commercial
Historic District

Belle Fourche, South Dakota

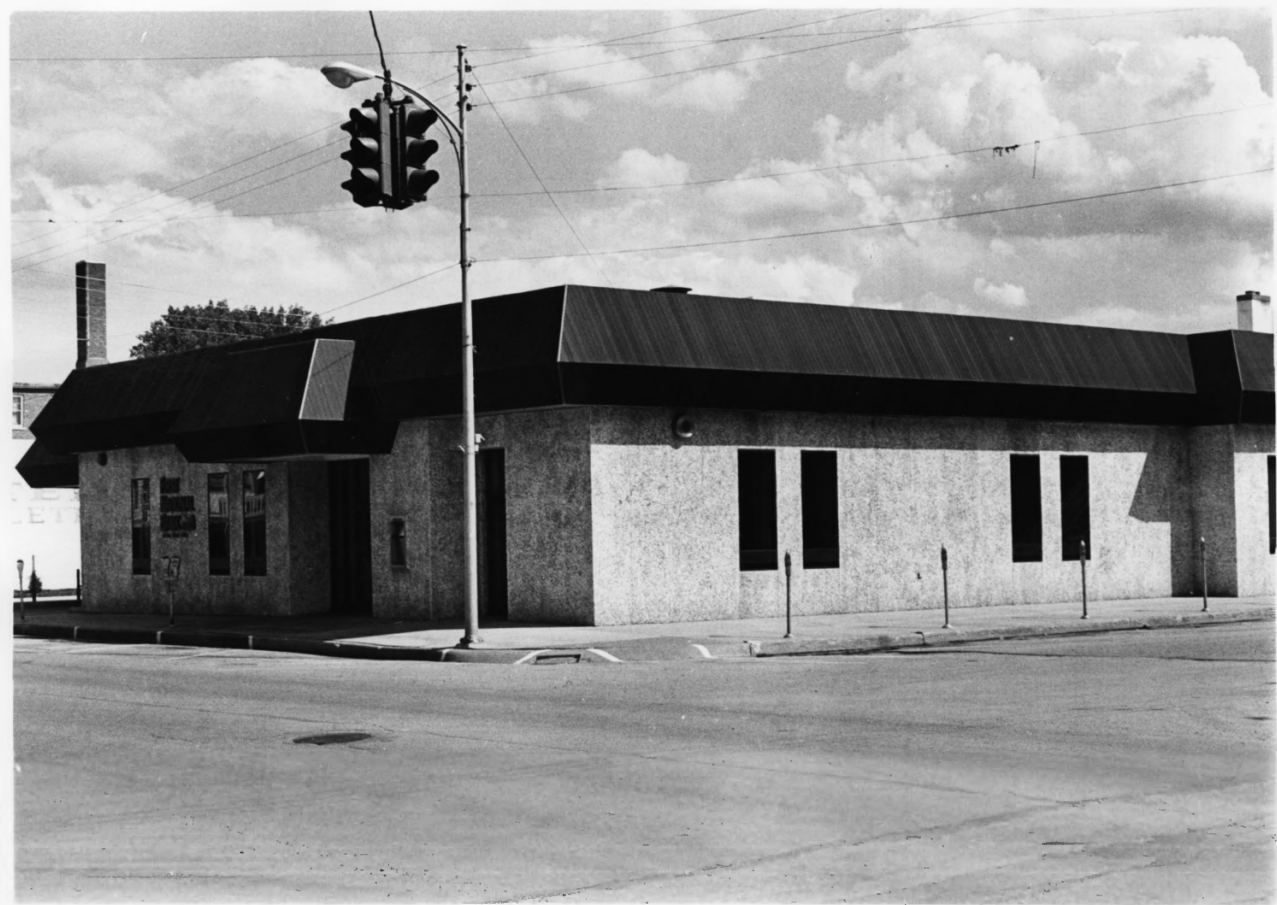
LeEllen Coacher

8-80

Historical Preservation Center

Facing south

Photo #131 518 State Street



1st Natl. Bank of the Black Hills,
Belle Fourche Commercial Historic
District

Belle Fourche, South Dakota

LeEllen Coacher, 8-80

Historical Preservation Center

Facing southeast

Photo #132

600 State Street



RAILROAD SALVAGE

NO. 2

-> GROCERY DEPARTMENT <-



Railroad Salvage Grocery, Belle Fourche

Commercial Historic District

Belle Fourche, South Dakota'

LeEllen Coacher

8-80

Historical Preservation Center

Facing south

Photo # 1 33

~~520~~ State Street



GAMBLES

GAMBLES

DRUGS

MILLER WESTERN DRUG

CASH ON HAND
100.00 1.00
100.00 1.00

CASH ON HAND
4.99

CASH ON HAND
39

Gambles, Belle Fourche Commercial
Historic District

Belle Fourche, South Dakota

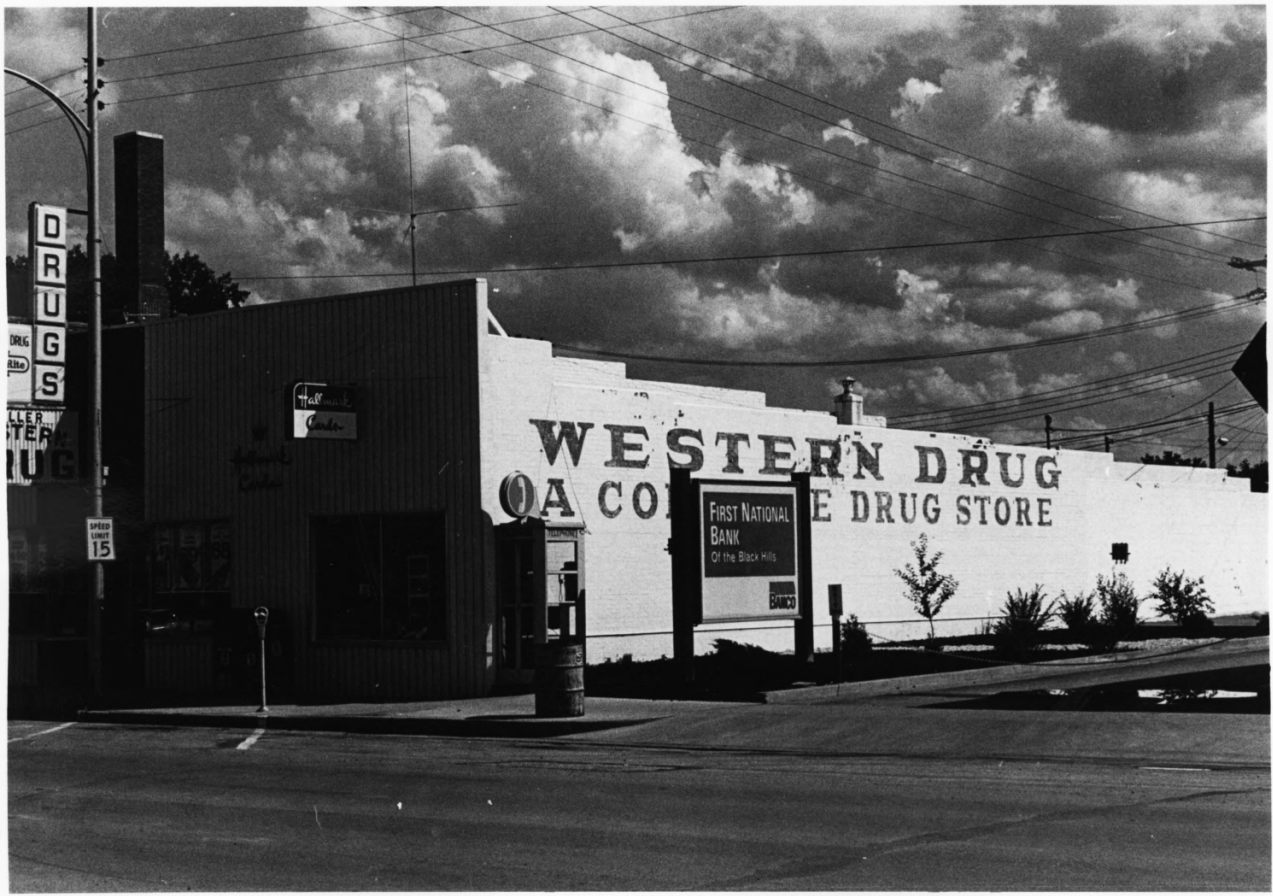
LeEllen Coacher

8-80

Historical Preservation Center

Facing southeast

Photo # 34 614 State Street



DRUGS

DRUG
Store

ALLER
TER
RUG

Call
Cando

WESTERN DRUG
A COMPANY OF THE DRUG STORE

FIRST NATIONAL
BANK
Of the Black Hills

BANCO

SPEED
LIMIT
15

Miller's Western Drug, Belle Fourche

Commercial Historic District

Belle Fourche, South Dakota

LeEllen Coacher

8-80

Historical Preservation Center

Facing Southeast

Photo #135 612 State Street



Law Offices, Belle Fourche Commercial
Historic District
Belle Fourche, South Dakota
LeEllen Coacher
8-80
Historical Preservation Center
Facing South
Photo #136. *618 State Street*



PIONEER
SPORTING GOODS
GUN REPAIR - HOBBY SUPPLIES

SOUVENIRS

FISHING TACKLE
ARCHERY SUPPLIES
RELOADING EQUIPMENT
GUN RES - CUTLERY
AUTHORIZED
REPAIR CENTER

RIFLES - HANDGUNS
- SHOTGUNS -
COMPLETE PROFESSIONAL
GUNSMITHING SERVICE

AMERICAN
5TH ST

DIAMOND SIGN

Pioneer Sporting Goods, Belle Fourche

Commercial Historic District

Belle Fourche, South Dakota

LeEllen Coacher

8-80

Historical Preservation Center

Facing west

Photo # 37

622 5th Ave



Pioneer Sporting Goods, Belle Fourche

Commercial Historic District

Belle Fourche, South Dakota

LeEllen Coacher

8-80

Historical Preservation Center

Facing west

Photo #238 Detail Cornice

The OLD
FOLK BAR

YOU MUST BE
21
OPEN 3 A.M.

5

The Old Back Bar, Belle Fourche Commercial

Historic District

Belle Fourche, South Dakota

LeEllen Coacher

8-80

Historical Preservation Center

Facing West

Photo #139

618

5th ave

PIONEER
SPORTING GOODS
GUN REPAIR — HUNTING SUPPLIES

SOUVENIRS

FISHING TACKLE
ARCHERY SUPPLIES
RELOADING EQUIPMENT
GUNS — CUTLERY

WATERLOO
REPAIR SHOP

RIFLES — HANDGUNS
SHOTGUNS —
COMPLETE PROFESSIONAL
GUNSMITHING SERVICE

WHEAT & HENLEY
AUTO LUBE HEALTH
WAX — POLISHES
1001 W. 1st St. - Ames, IA



Pioneer Sporting Goods-Belle Fourche
Hotel, Belle Fourche Commercial
Historic District

Belle Fourche, South Dakota

LeEllen Coacher 8-80

Historical Preservation Center

Facing West

Photo #340 620 5th ave



SHAY'S

Pepsi SHAY'S

STEAK HOUSE
CAFE

EXPIRES
1975

Al's Steak House, Belle Fourche

Commercial Historic District

Belle Fourche, South Dakota

LeEllen Coacher

8-80

Historical Preservation Center

Facing West

Photo #242

614 5th Ave



AL'S
Cafe

STEAK HOUSE
CAFE

SHAY'S

Al's Steak House, Belle Fourche
Commercial Historic District
Belle Fourche, South Dakota

LeEllen Coacher

8-80

Historical Preservation Center

Facing West

Photo #143



STEAK HOUSE

WILLIAMS & COMPANY
Pils SHAY'S RECREATION Pils

Shay's Recreation, Belle Fourche
Commercial Historic District
Belle Fourche, South Dakota
LeEllen Coacher
8-80

Historical Preservation Center
Facing Northwest

Photo # 2 44 612 5th ave

Plymouth

CHRISLER

Dodge Trucks

BUTTE COUNTY MOTORS

Top Quality
USED CARS

BUTTE C
AUTO-
ESTIMATES
CUSTOMER



Butte County Motors, Belle Fourche

Commercial Historic District

Belle Fourche, South Dakota

LeEllen Coacher

8-80

Historical Preservation Center

Facing west

Photo #45 608 5th Avenue



ATION

Pepsi-Cola

Bob's
CAFE

BUTT

OPEN



Bob's Cafe, Belle Fourche Commercial
Historic District

Belle Fourche, South Dakota

LeEllen Coacher

8-80

Historical Preservation Center

Facing Northwest

Photo #46

610 5th Ave



511 State Street
Belle Fourche Commercial Historic

District

Belle Fourche, Butte County

South Dakota

March 2002

South View

Photographer - Paige Hoskinson

SOUTH DAKOTA STATE
WRESTLING CHAMPIONSHIP'S
FRIDAY MARCH 2nd 7:00pm
IN RNS-4 TO 5:30pm

By
Circle Lounge
Main level

REAL
ESTATE
2000
RESIDENT

St. James Place
FULL SERVICE SALON

REAL ESTATE
2000
952-3000



506 State Street
Belle Fourche Commercial Historic

Belle Fourche, Butte County District
South Dakota

March 2002

South View

photographer - Paige Hoskinson



COWBOY BACK

BAR

BELL'S FOUNDRY
Business District



622 5th Street
Belle Fourche Commercial Historic
District
Belle Fourche, Butte County
South Dakota
March 2002
North view
Photographer Paige Hoskinson



COWBOY BACK BAR

BAR

DEO LOTTERY

620 5th Street
Belle Fourche Commercial Historic
District

Belle Fourche, Butte County
South Dakota

March 2002

west view

Photographer - Raige Hoskinson



516 State Street
Belle Fourche Commercial Historic
District
Belle Fourche, Butte County
South Dakota

March 2002

Photographer - Paige Hoskinson
South view



ANTIQUE

CIRCLE

512 State Street
Belle Fourche Commercial Historic
District

Belle Fourche, Butte County
South Dakota

March 2002

South view
Photographer - Paige Hoskinson



CIRCLE LIGHT
2001-2002 HONORARY TROOP
MEMBER OF THE NATIONAL
LUTHERAN LAY LEAGUE
ESTABLISHED 1948 FOR THE
LUTHERAN CHURCH IN AMERICA
1000 N. 10th St., Lincoln, NE 68502
402-441-1111

CIRCLE LIGHT

SMALL RESTAURANT
1980-2000

508 State Street

510 State Street

Belle Fourche Commercial Historic
District

Belle Fourche, Butte County
South Dakota

March 2002

South view

Photographer - Paige Hoskinson