

IDENTIFICATION

Historic name: Elisha Sharp House
 Common name: Worth House
 Address: Old Ten Mile Road
Ten Mile, Tennessee
 Owner's name: J.A. Worth
 Owner's address: Route 1
Ten Mile, Tennessee 37880
 Classification: Building-private
 Tax map reference: Dist. 4, Map 16, Parcel 3
 Acreage: .86 acres
 UTM reference: Zone 16 N 3946640
E 710680

STATUS

Open to public: Yes No Restricted
 Visible from road: Yes No
 Occupied: Yes No
 Present use: Private residence
 Current condition: Fair
 Alterations: Frame addition(late 1800s) on end of brick ell.
 Site features: Brick outbuilding (ca. 1820) laid in common bond, immediately south of house. Brick walk extends from front of house.

HISTORY

Date of construction: ca. 1820
 Architect/builder: N/A
 Original or previous owners: Elisha Sharp, original owner; John A. Wasson; J.A. Worth
 Original use: Private residence
 Theme/s: Primary Architecture
 Secondary Exploration/ Settlement
 Other Politics/Government

SOURCES

Bibliographical data: Lillard, Stewart. Meigs County, Tennessee. Interview with J.A. Worth, Ten Mile, TN., October 29, 1980.
 Form prepared by: Ann Toplovich
 Title: Cultural Resource Surveyor
 Organization: Tennessee Historical Commission
 Date: 8/20/81

DESCRIPTION

A two story brick house built on a stone foundation, the Elisha Sharp House is rectangular in plan with a one story brick and frame ell attached to the rear. The facade of the Sharp House is laid in Flemish bond, and all other elevations are laid in common bond. A metal gable roof with corbelled brick cornice covers the house, and brick chimneys are located on the gable ends. The metal gable roof covering the ell had an exterior gable end chimney, but the addition of a frame section to the end of the ell now gives this chimney an interior central position. The facade (east elevation) of the Sharp House displays a Federal influence and is 5 bays wide with a central doorway and rectangular transom. All windows of the facade are 2 over 2 lights topped by flat lintels with corner blocks. A one story porch with metal hip roof extends across most of the facade and is supported by six bracketed turned posts with a sawn balustrade.

SIGNIFICANCE

The Elisha Sharp House, built ca. 1820, is one of six brick buildings still standing in Meigs County. It is the only brick house showing clear influence from the Federal style, and may be the earliest brick house in the county. In 1820, Elisha Sharp (b.1792) moved to the Ten Mile area of Meigs (then Rhea) County from Greene County, Tennessee. Sharp was one of the earliest settlers in Meigs County and served as commissioner to determine the new county seat. The Sharp House was used as the election place for the Seventh District of the county. Sharp established a large farm and at one time owned 50 slaves. He was murdered in 1863 and is buried in the nearby Sharp family cemetery. Elisha Sharp's son, Elijah F.(1842-1899), in-

PHOTOGRAPHIC DATA

Photographer: Stephen T. Rogers

Date: 3/1/79

Negatives on file: Tennessee Historical
Commission

Photographer facing: N&E elevation-facing SW

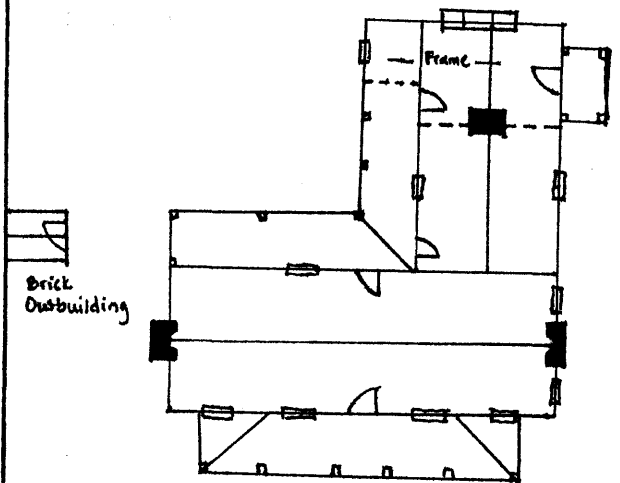
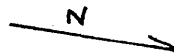
Photograph number 14 of 55.

CONTINUATION

Significance(continued)

herited the Sharp farm. Elijah F. Sharp served as a second lieutenant in the Confederate Army. A Democrat, Sharp was representative to the State House for Meigs, Rhea, and James Counties from 1883 to 1885. The virtually unaltered style of the Sharp House and its little changed pastoral setting along the old Kingston-Ten Mile Road (ca. 1805) contribute to the house's significance to Meigs County's architectural history.

SITE PLAN - Include North Arrow



**United States Department of the Interior
Heritage Conservation and Recreation Service**

**National Register of Historic Places
Inventory—Nomination Form**

For HCERS use only

received

date entered

Historic Resources of
Continuation sheet Meigs County, Tennessee Item number Identification Page 2

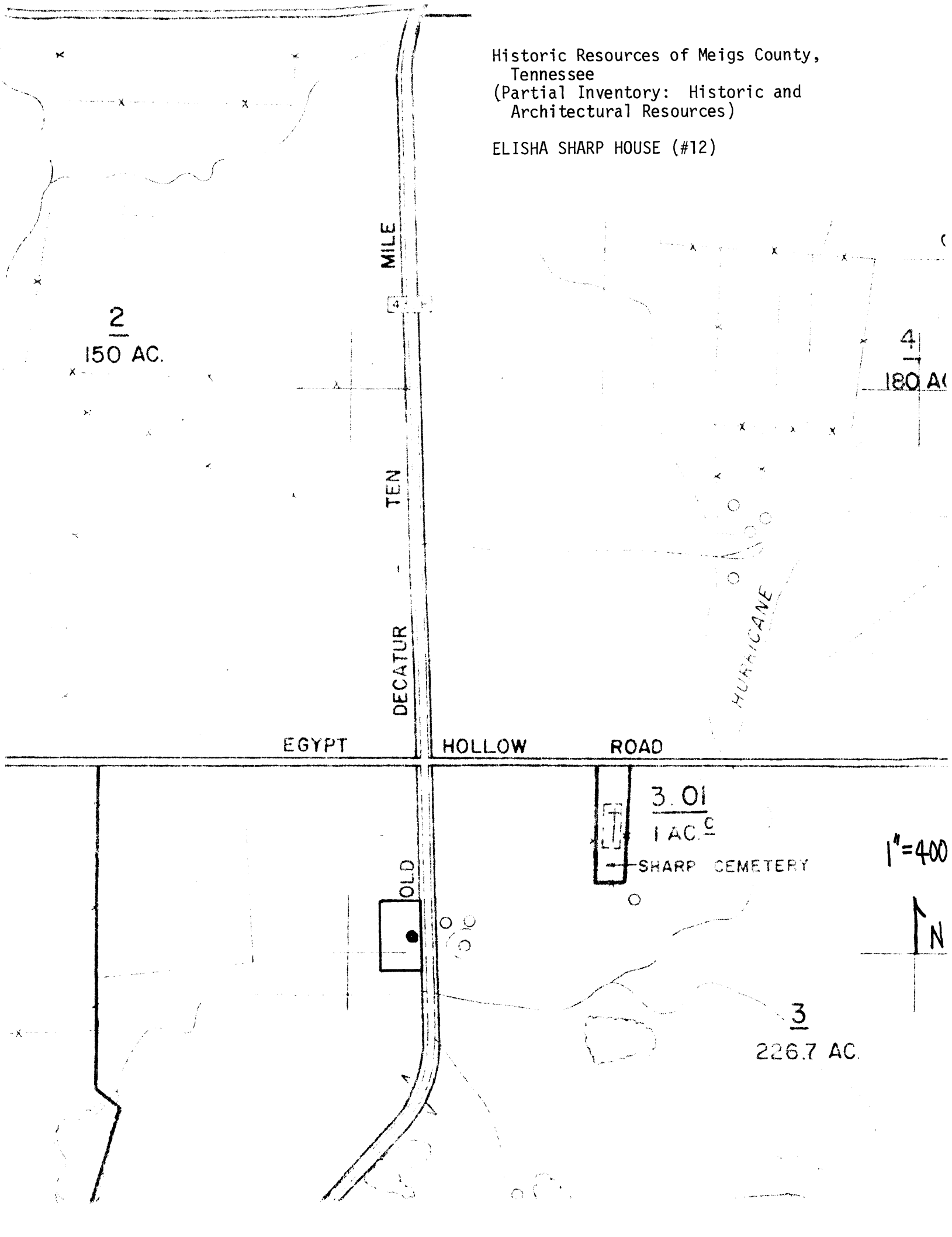
MEIGS COUNTY MULTIPLE RESOURCE NOMINATION - Elisha Sharp House (#12)

Verbal Boundary Description and Justification:

12. The boundaries begin at a point on the Old Decatur-Ten Mile Road 475 feet south of the intersection of Egypt Hollow Road, thence south along the Old Decatur-Ten Mile Road 250 feet, thence west 150 feet, thence north 250 feet, thence east 150 feet to the beginning. This boundary takes the form of a rectangle which encompasses the building. Due to the lack of property lines or visual boundaries on the south, west, and north sides, imaginary boundary lines were established to include the house and approximately .86 acres of land on which it sits.

Historic Resources of Meigs County,
Tennessee
(Partial Inventory: Historic and
Architectural Resources)

ELISHA SHARP HOUSE (#12)



2
150 AC.

4
180 AC.

3.01
1 AC.^c

1" = 400"

3
226.7 AC.

EGYPT

HOLLOW

ROAD

OLD

SHARP CEMETERY

N