



ONE WAY STREET  
STOP

DO NOT  
ENTER

HOTEL  
FRANCES

PETE & TED'S  
RESTAURANT

COFFEE

METALS  
BREAKFAST

STEAKS  
BURGERS

FRANCES  
HOTEL

Crosby State

THE FARLINGER

Atlanta, Fulton County, Georgia

Photographer: James R. Lockhart

Negatives Filed: Georgia Department of  
Natural Resources

Date: April, 1982

Description (1 of 18): West facade and  
north corner (Sacred Heart Church on left)  
photographer facing south.



THE FARLINGER

Atlanta, Fulton County, Georgia

Photographer: James R. Lockhart

Negatives Filed: Georgia Department of  
Natural Resources

Date: April, 1982

Description (2 of 18): North corner of  
building; photographer facing southwest.



FRANCES HOTEL

FRANCES HOTEL

ALL DAY BREAKFAST

FRANCES HOTEL

DOMINO

THE WORLD FAMOUS DOMINO

DOMINO

DOMINO

FRANCES HOTEL

FRANCES HOTEL

FRANCES HOTEL



THE FARLINGER

Atlanta, Fulton County, Georgia

Photographer: James R. Lockhart

Negatives Filed: Georgia Department of  
Natural Resources

Date: April, 1982

Description (3 of 18): West facade;  
photographer facing northwest.



FRANCES HOTEL  
SPRINKLER PROTECTED

FRANCES HOTEL  
AIR CONDIT

343  
FRANCES HOTEL

FRANCES HOTEL

SANDWICHES  
HOT DOGS  
FISH  
CHOPS

Miller  
HIGH LIFE

THE FARLINGER

Atlanta, Fulton County, Georgia

Photographer: James R. Lockhart

Negatives Filed: Georgia Department of  
Natural Resources

Date: April, 1982

Description (4 of 18): Main entrance,  
west facade; photographer facing south-  
east.





THE FARLINGER

Atlanta, Fulton County, Georgia

Photographer: James R. Lockhart

Negatives Filed: Georgia Department of  
Natural Resources

Date: April, 1982

Description (5 of 18): East facade;  
photographer facing northwest.



BOBBY ATHA'S  
*World Famous*  
**Domino**  
*Lounge*

BOBBY ATHA'S  
*World Famous*  
**Domino**  
*Lounge*

THE FARLINGER

Atlanta, Fulton County, Georgia

Photographer: James R. Lockhart

Negatives Filed: Georgia Department of  
Natural Resources

Date: April, 1982

Description (6 of 18): Detail of bay  
windows, east facade; photographer facing  
west.







THE FARLINGER

Atlanta, Fulton County, Georgia

Photographer: James R. Lockhart

Negatives Filed: Georgia Department of  
Natural Resources

Date: April, 1982

Description (7 of 18): Hotel lobby,  
first floor; photographer facing north-  
east.



# THE FARLINGER

Atlanta, Fulton County, Georgia

Photographer: James R. Lockhart

Negatives Filed: Georgia Department of  
Natural Resources

Date: April, 1982

Description (8 of 18): Hotel lobby, first floor; photographer facing northwest.



THE FARLINGER

Atlanta, Fulton County, Georgia

Photographer: James R. Lockhart

Negatives Filed: Georgia Department of  
Natural Resources

Date: April, 1982

Description (9 of 18): First floor vesti-  
bule; photographer facing south.





THE FARLINGER

Atlanta, Fulton County, Georgia

Photographer: James R. Lockhart

Negatives Filed: Georgia Department of  
Natural Resources

Date: April, 1982

Description (10 of 18): Stairway, looking  
up from first floor landing; photographer  
facing northwest.



THE FARLINGER

Atlanta, Fulton County, Georgia

Photographer: James R. Lockhart

Negatives Filed: Georgia Department of  
Natural Resources

Date: April, 1982

Description (11 of 18): Stairway;  
photographer facing north.





THE FARLINGER

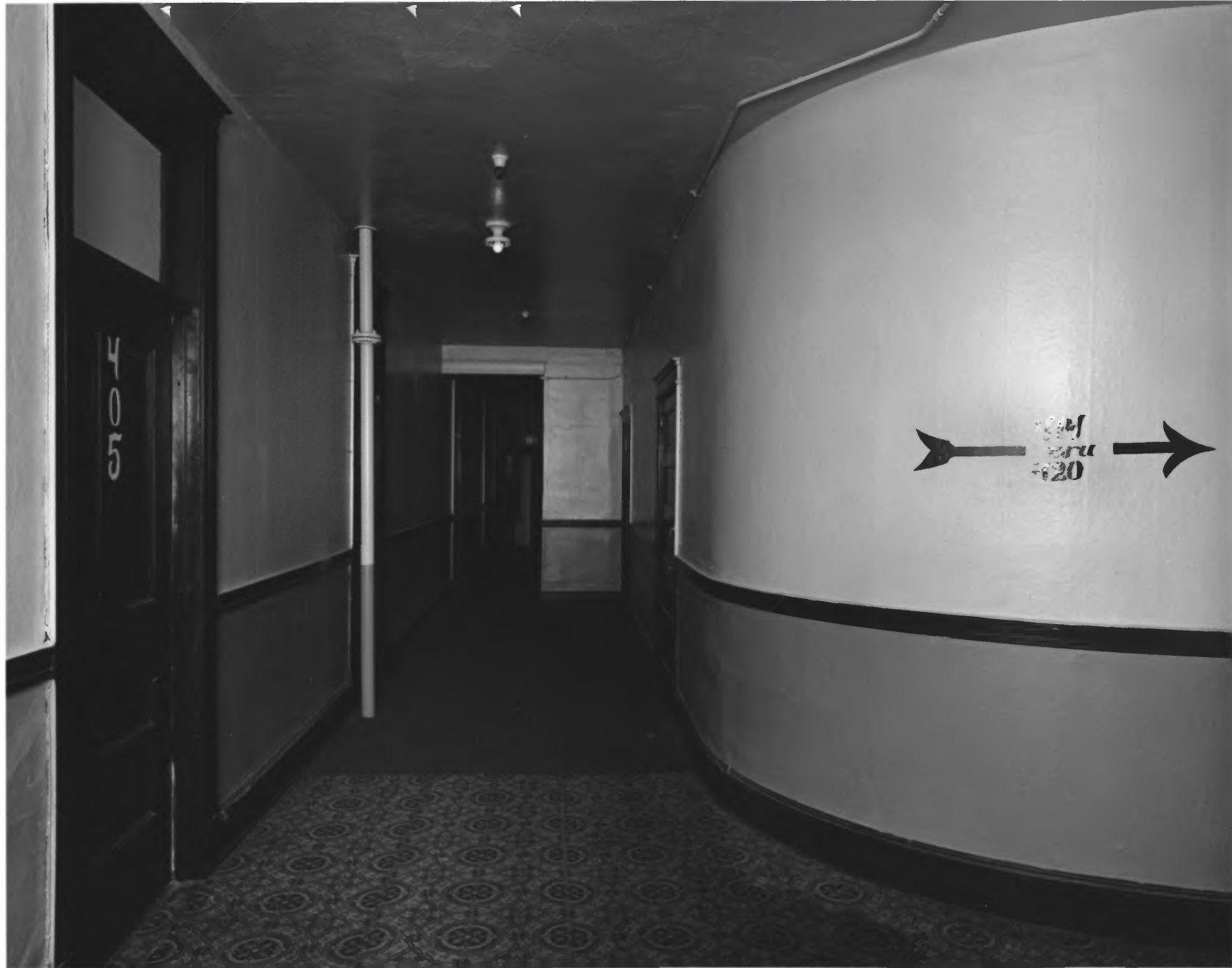
Atlanta, Fulton County, Georgia

Photographer: James R. Lockhart

Negatives Filed: Georgia Department of  
Natural Resources

Date: April, 1982

Description (12 of 18): Second floor room,  
showing bathroom; photographer facing  
southeast.



4510

420  
420

THE FARLINGER

Atlanta, Fulton County, Georgia

Photographer: James R. Lockhart

Negatives Filed: Georgia Department of  
Natural Resources

Date: April, 1982

Description (13 of 18): Fourth floor hall;  
photographer facing north.



THE FARLINGER

Atlanta, Fulton County, Georgia

Photographer: James R. Lockhart

Negatives Filed: Georgia Department of  
Natural Resources

Date: April, 1982

Description (14 of 18): Third floor hall;  
photographer facing northeast.



**FIRE EXIT**  
Emergency use only.  
Violators will be prosecuted.  
No exceptions  
The Management

THE FARLINGER

Atlanta, Fulton County, Georgia

Photographer: James R. Lockhart

Negatives Filed: Georgia Department of  
Natural Resources

Date: April, 1982

Description (15 of 18): Third floor  
hall; photographer facing northeast.





THE FARLINGER

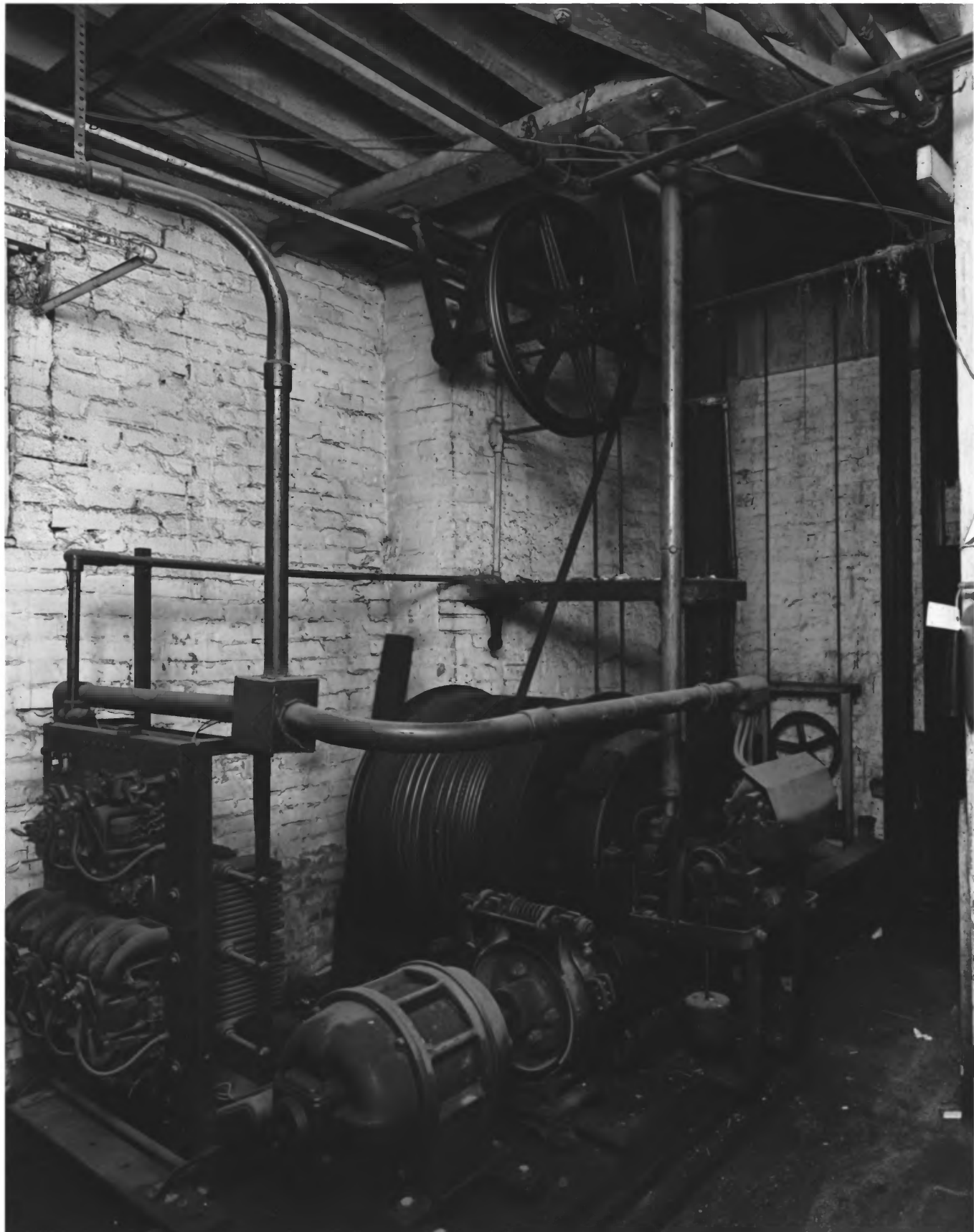
Atlanta, Fulton County, Georgia

Photographer: James R. Lockhart

Negatives Filed: Georgia Department of  
Natural Resources

Date: April, 1982

Description (16 of 18): Third floor room;  
photographer facing northwest.



THE FARLINGER

Atlanta, Fulton County, Georgia

Photographer: James R. Lockhart

Negatives Filed: Georgia Department of  
Natural Resources

Date: April, 1982

Description (17 of 18): Elevator  
machinery in basement; photographer  
facing southeast.



THE FARLINGER

Atlanta, Fulton County, Georgia

Photographer: James R. Lockhart

Negatives Filed: Georgia Department of  
Natural Resources

Date: April, 1982

Description (18 of 18): Load bearing  
piers in basement and sidewalk vault;  
photographer facing southeast.