



Rawls Hotel

Enterprise, Coffee County,
Alabama

SEP 17 1980

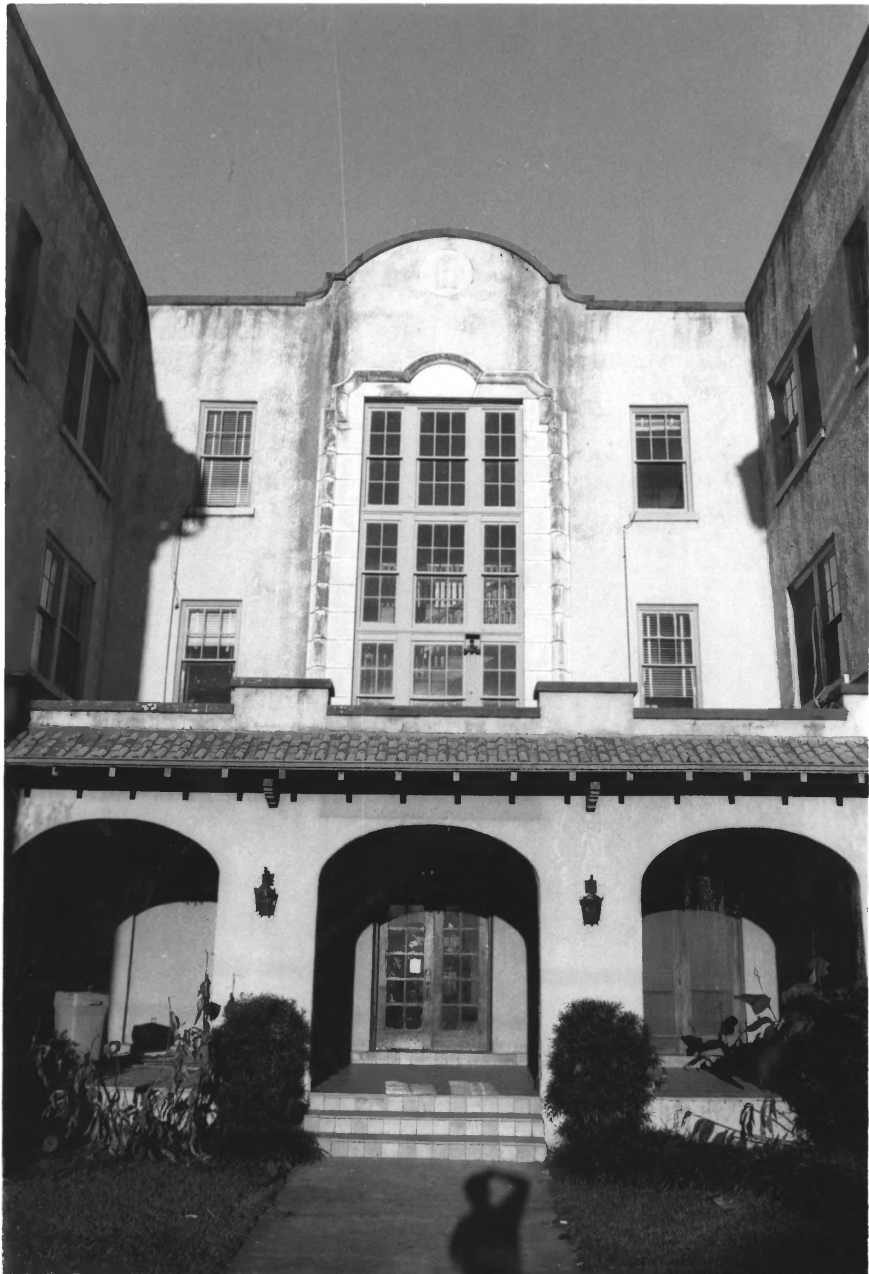
Hayden C. Pursley, January, 1980

Alabama Historical Commission
725 Monroe Street
Montgomery, Alabama 36130

Looking east at what was front
entrance of the hotel facing the
train depot.

Photo number: 1/21

JUL 17 1980



Rawls Hotel
Enterprise, Coffee County,
Alabama

SEP 17 1980

Hayden C. Pursley, January, 1980

Alabama Historical Commission
725 Monroe Street
Montgomery, Alabama 36130

Looking east at what was the front
entrance of the hotel facing the
train depot.

Photo number: 2/21 JUL 17 1980



Rawls Hotel
Enterprise, Coffee County,
Alabama

SEP 17 1980

Hayden C. Pursley, January, 1980

Alabama Historical Commission
725 Monroe Street
Montgomery, Alabama 36130

Looking east at what was front
entrance of the hotel. Corner of
train depot is on the right.

Photo number: 3/2, JUL 17 1980



Rawls Hotel

Enterprise, Coffee County,
Alabama

SEP 17 1980

Hayden C. Pursley, January, 1980

Alabama Historical Commission
725 Monroe Street
Montgomery, Alabama 36130

Looking east at what was front
entrance of the hotel.

Photo number: 4/21
JUL 17 1980



Rawls Hotel
Enterprise, Coffee County,
Alabama

SEP 17 1980

Hayden C. Pursley, January, 1980

Alabama Historical Commission
725 Monroe Street
Montgomery, Alabama 36130

Looking east at the left hand wing

Photo number: 5/2 JUL 17 1980



N
S

DONALDSON'S
BARBER SHOP

be
BEAUTY

SAI

BEAU

PARKING
NO NO. LIMIT
LOADING ZONE

Rawls Hotel
Enterprise, Coffee County,
Alabama

SEP 17 1980

Hayden C. Pursley, January, 1980

Alabama Historical Commission
725 Monroe Street
Montgomery, Alabama 36130

Looking west at the Main Street
entrance to the hotel

Photo number: 6/21 JUL 17 1980



PARKING
5 MIN LIMIT
LOADING ZONE

Rawls Hotel
Enterprise, Coffee County
Alabama

SEP 17 1980

Hayden C. Pursley, January, 1980

Alabama Historical Commission
725 Monroe Street
Montgomery, Alabama 36130

Looking west at entrance facing
Main Street

Photo number:

7/21

JUL 17 1980



Rawls Hotel
Enterise, Coffee County
Alabama

SEP 17 1980

Hayden C. Pursley, January, 1980

Alabama Historical Commission
725 Monroe Street
Montgomery, Alabama 36130

Interior view showing top of
column in lobby. Gold painted,
hand carved beechwood setting atop
black walnut column

JUL 17 1980

Photo number:

8/21



Rawls Hotel
Enterprise, Coffee County
Alabama

SEP 17 1980

Hayden C. Pursley, January, 1980

Alabama Historical Commission
725 Monroe Street
Montgomery, Alabama 36130

Interior view showing chandelier in
lobby Chandelier is cast bronze
with crystal prisms imported from
Europe

JUL 17 1980

Photo number: 9/21



Rawls Hotel
Enterprise, Coffee County
Alabama

SEP 17 1980

Hayden C. Pursley, January, 1980

Alabama Historical Commission
725 Monroe Street
Montgomery, Alabama 36130

Interior view showing mezzanine
area with skylight above with
stairs in background leading to
third floor

Photo number: 10/21

JUL 17 1980



Rawls Hotel

Enterprise, Coffee County,
Alabama

SEP 17 1980

Hayden C. Pursley, January, 1980

Alabama Historical Commission
725 Monroe Street
Montgomery, Alabama 36130

Interior view showing stairway
from lobby to second floor

Photo number: 11/21

JUL 17 1980



OFFICE

SEP 17 1980

Rawls Hotel
Enterprise, Coffee County,
Alabama

Hayden C. Pursley, January, 1980

Alabama Historical Commission
725 Monroe Street
Montgomery, Alabama 36130

Interior view of hotel office door
leading into the lobby with an
original ceiling fan shown at top
of picture

JUL 17 1980

Photo number: 12/21



SEP 17 1980

Rawls Hotel
Enterprise, Coffee County,
Alabama

Hayden C. Pursley, January, 1980

Alabama Historical Commission
725 Monroe Street
Montgomery, Alabama 36130

Interior view showing the hallway
leading from the Main Street
entrance into the lobby

Photo number: 13/21

JUL 17 1980



Rawls Hotel

Enterprise, Coffee County,

Alabama

SEP 17 1980

Hayden C. Pursley, January, 1980

Alabama Historical Commission

725 Monroe Street

Montgomery, Alabama 36130

Interior views showing portions of
lobby area

Photo number: 14/21

JUL 17 1980



Rawls Hotel

Enterprise, Coffee County,
Alabama

SEP 17 1980

Hayden C. Pursley, January, 1980

Alabama Historical Commission

725 Monroe Street

Montgomery, Alabama 36130

Interior views showing portions of
lobby area

Photo number: 15/2, JUL 17 1980



Rawls Hotel
Enterprise, Coffee County,
Alabama

SEP 17 1980

Hayden C. Pursley, January, 1980

Alabama Historical Commission
725 Monroe Street
Montgomery, Alabama 36130

Interior views showing portions of
lobby area

JUL 17 1980

Photo number: 16/21



Rawls Hotel
Enterprise, Coffee County
Alabama

SEP 17 1980

Hayden C. Pursley, January, 1980

Alabama Historical Commission
725 Monroe Street
Montgomery, Alabama 36130

Interior views showing portions of
lobby area

Photo number: 17 ¹/₂, JUL 17 1980



Rawls Hotel
Enterprise, Coffee County
Alabama

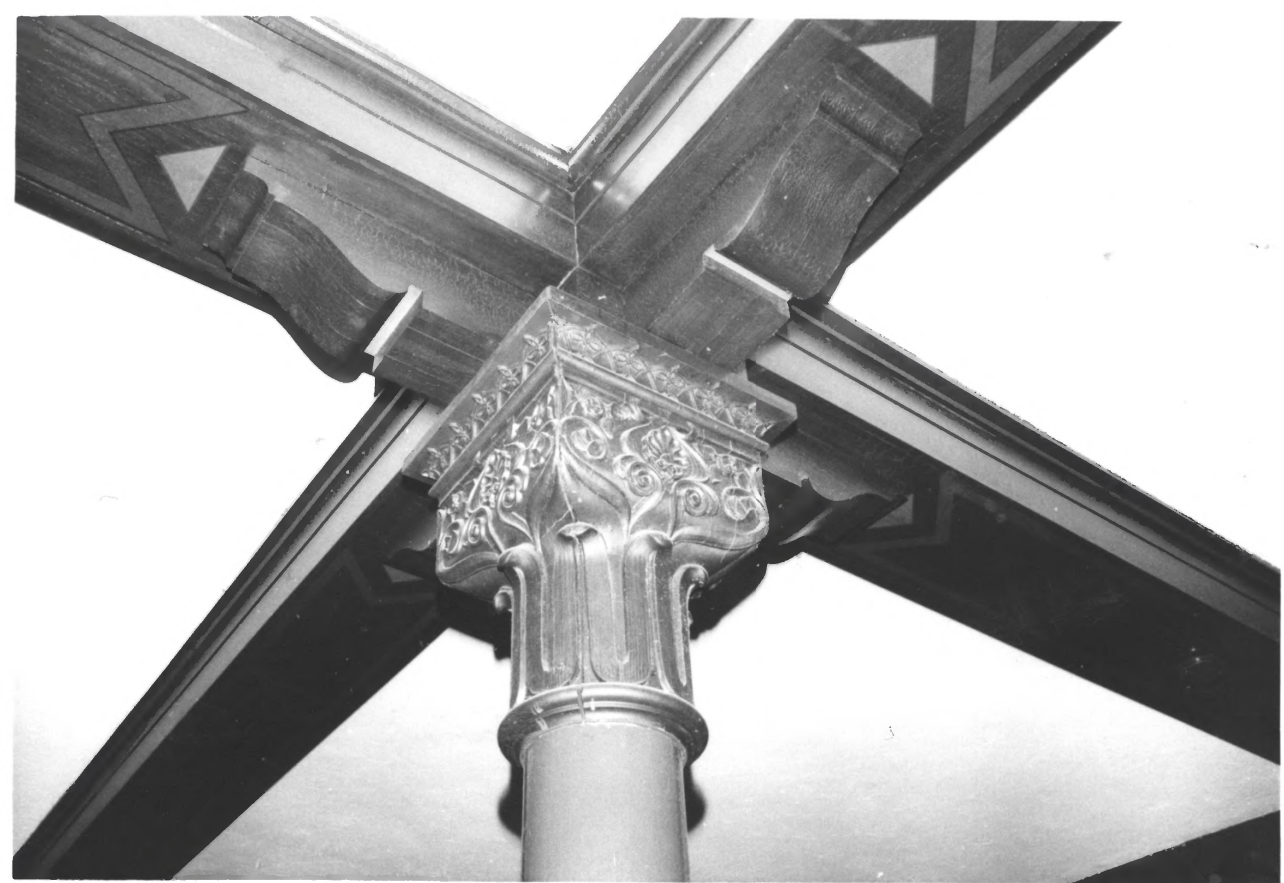
SEP 17 1980

Hayden C. Pursley, January, 1980

Alabama Historical Commission
725 Monroe Street
Montgomery, Alabama 36130

Interior views showing portions of
lobby area

Photo number: 18/21 JUL 17 1980



Rawls Hotel

Enterprise, Coffee County,
Alabama

SEP 17 1980

Hayden C. Pursley, January, 1980

Alabama Historical Commission
725 Monroe Street
Montgomery, Alabama 36130

Interior view showing top of
column in the dining room

Photo number: 19/2, JUL 17 1980



Rawls Hotel

Enterprise, Coffee County,
Alabama

SEP 17 1980

Hayden C. Pursley, January, 1980

Alabama Historical Commission
725 Monroe Street
Montgomery, Alabama 36130

Interior views showing stairway

Photo number: 20/21
JUL 17 1980



Rawls Hotel

Enterprise, Coffee County,
Alabama

SEP 17 1980

Hayden C. Pursley, January, 1980

Alabama Historical Commission
725 Monroe Street
Montgomery, Alabama 36130

Interior views showing stairway

Photo number: 21/21

JUL 17 1980