



Flagstaff

OCMU - Ocmulgee National Monument

Bibb Co., GA

View from S

IDLCS 91398

May 1995



Palisade Trenches (Lamar)

OCMU - Ocmulgee National Monument

Bibb Co., GA

10LCS 91394

May 1995



Mound X

OCMU - Ocmulgee National Monument

Bibb Co. GA

View from N

IDLCS 91395

May 1995



Corn Storage Pits

OCCMU - ocmulgee National Monument

Bibb Co., GA

View from N

IDLCS 91397

May 1995





# Prehistoric Trenches

OCMU - ocmulgee National Monument

Bibb Co., GA

View from W

IDLCS 91396

May 1995



OCMULGEE NATIONAL MONUMENT VISITOR

Center

MAY 21 1979

Macon, Georgia

Staff, Ocmulgee National Monument

1975 Filed Ocmulgee Nat. Mon

View looking north at front\* of VC



UNITED STATES DEPARTMENT OF THE INTERIOR  
NATIONAL PARK SERVICE

**NATIONAL REGISTER OF HISTORIC PLACES  
PROPERTY PHOTOGRAPH FORM**

FOR NPS USE ONLY

RECEIVED FEB 24 1976

DATE ENTERED

SEE INSTRUCTIONS IN *HOW TO COMPLETE NATIONAL REGISTER FORMS*  
TYPE ALL ENTRIES ENCLOSE WITH PHOTOGRAPH

**1 NAME**

HISTORIC

Lamar Mounds'

AND/OR COMMON

**2 LOCATION**

CITY, TOWN

Macon

— VICINITY OF

Bibb

COUNTY

Georgia

STATE

**3 PHOTO REFERENCE**

PHOTO CREDIT

B. Berg

DATE OF PHOTO 1965

NEGATIVE FILED AT Ocmulgee National Monument

**4 IDENTIFICATION**

DESCRIBE VIEW, DIRECTION, ETC. IF DISTRICT. GIVE BUILDING NAME & STREET

PHOTO NO.

Aerial view of Lamar Mounds tract facing Northwest. Partial boundary is eliminated by dirt roads, Ocmulgee River is located 800' to the West of Lamar Mounds.





UNITED STATES DEPARTMENT OF THE INTERIOR  
NATIONAL PARK SERVICE

**NATIONAL REGISTER OF HISTORIC PLACES  
PROPERTY PHOTOGRAPH FORM**

FOR NPS USE ONLY

RECEIVED FEB 24 1976

DATE ENTERED

SEE INSTRUCTIONS IN *HOW TO COMPLETE NATIONAL REGISTER FORMS*  
TYPE ALL ENTRIES ENCLOSE WITH PHOTOGRAPH

**1 NAME**

HISTORIC

Indian Mounds - Ocmulgee National Monument

AND/OR COMMON

**2 LOCATION**

CITY, TOWN

Macon

—VICINITY OF

Bibb

COUNTY

Georgia

STATE

**3 PHOTO REFERENCE**

PHOTO CREDIT

B. Berg

DATE OF PHOTO

January, 1974

NEGATIVE FILED AT

Ocmulgee National Monument

**4 IDENTIFICATION**

DESCRIBE VIEW, DIRECTION, ETC. IF DISTRICT, GIVE BUILDING NAME & STREET

PHOTO NO.

Camera facing North. Aerial photograph.





UNITED STATES DEPARTMENT OF THE INTERIOR  
NATIONAL PARK SERVICE

NATIONAL REGISTER OF HISTORIC PLACES  
PROPERTY PHOTOGRAPH FORM

FOR NPS USE ONLY

RECEIVED FEB 24 1976

DATE ENTERED

SEE INSTRUCTIONS IN *HOW TO COMPLETE NATIONAL REGISTER FORMS*  
TYPE ALL ENTRIES ENCLOSE WITH PHOTOGRAPH

**1** NAME

HISTORIC

Great Temple Mound -

AND/OR COMMON

Mound A

**2** LOCATION

CITY, TOWN

Macon

\_\_\_\_VICINITY OF

Bibb

COUNTY

Georgia

STATE

**3** PHOTO REFERENCE

PHOTO CREDIT

D.Hannah, NPS

DATE OF PHOTO

October, 1970

NEGATIVE FILED AT

Ocmulgee National Monument

**4** IDENTIFICATION

DESCRIBE VIEW, DIRECTION, ETC. IF DISTRICT. GIVE BUILDING NAME & STREET

PHOTO NO.

View from lowlands looking to West at Great Temple Mound (right) and Lesser Temple Mound (Left) and their possible common sub mound base.

Note definant flat tops characteristic of this type of ceremonial mound.

Steps to top of Great Temple Mound are also visible in this picture.





UNITED STATES DEPARTMENT OF THE INTERIOR  
NATIONAL PARK SERVICE

NATIONAL REGISTER OF HISTORIC PLACES  
PROPERTY PHOTOGRAPH FORM

FOR NPS USE ONLY

RECEIVED FEB 24 1976

DATE ENTERED

SEE INSTRUCTIONS IN *HOW TO COMPLETE NATIONAL REGISTER FORMS*  
TYPE ALL ENTRIES ENCLOSE WITH PHOTOGRAPH

**1** NAME

HISTORIC Lesser Temple Mound

AND/OR COMMON Mound B, 1 Bi 2

**2** LOCATION

CITY, TOWN Macon VICINITY OF Bibb COUNTY Georgia STATE

**3** PHOTO REFERENCE

PHOTO CREDIT B. Berg

DATE OF PHOTO 1965

NEGATIVE FILED AT Ocmulgee National Monument

**4** IDENTIFICATION

DESCRIBE VIEW, DIRECTION, ETC. IF DISTRICT. GIVE BUILDING NAME & STREET

PHOTO NO.

View from top of Great Mound, showing its association with nearby Lesser Temple Mound- both mounds being possibly part of one larger base mound. Steps show angle and height or remnant of this mound. Camera is facing North and field area of park and outside monument housing and Ft. Hawkins blockhouse show in background.





UNITED STATES DEPARTMENT OF THE INTERIOR  
NATIONAL PARK SERVICE

FOR NPS USE ONLY

RECEIVED FEB 24 1976

DATE ENTERED

**NATIONAL REGISTER OF HISTORIC PLACES  
PROPERTY PHOTOGRAPH FORM**

SEE INSTRUCTIONS IN *HOW TO COMPLETE NATIONAL REGISTER FORMS*  
TYPE ALL ENTRIES ENCLOSE WITH PHOTOGRAPH

**1 NAME**

HISTORIC Funeral Mound

AND/OR COMMON Mound C, 1 Bi 1

**2 LOCATION**

CITY, TOWN Macon

—VICINITY OF Bibb

COUNTY Georgia

STATE

**3 PHOTO REFERENCE**

PHOTO CREDIT B. Berg

DATE OF PHOTO 1965

NEGATIVE FILED AT Ocmulgee National Monument

**4 IDENTIFICATION**

DESCRIBE VIEW, DIRECTION, ETC. IF DISTRICT. GIVE BUILDING NAME & STREET

PHOTO NO.

View of Funeral Mound with camera facing Northwest from top of Great Temple Mound. This shot shows outline of remnant of this once huge mound, and its association with the village field and wooded area outside the monument. Railroad right of way shows behind mound as level line in middle distance.



UNITED STATES DEPARTMENT OF THE INTERIOR  
NATIONAL PARK SERVICE

NATIONAL REGISTER OF HISTORIC PLACES  
PROPERTY PHOTOGRAPH FORM

FOR NPS USE ONLY

RECEIVED FEB 24 1976

DATE ENTERED

SEE INSTRUCTIONS IN *HOW TO COMPLETE NATIONAL REGISTER FORMS*  
TYPE ALL ENTRIES ENCLOSE WITH PHOTOGRAPH

**1** NAME

HISTORIC

Cornfield Mound

AND/OR COMMON

Mound D, 1 Bi3

**2** LOCATION

CITY, TOWN

Macon

\_\_\_VICINITY OF

Bibb

COUNTY

Georgia

STATE

**3** PHOTO REFERENCE

PHOTO CREDIT

B. Berg

DATE OF PHOTO

1965

NEGATIVE FILED AT

Ocmulgee National Monument

**4** IDENTIFICATION

DESCRIBE VIEW, DIRECTION, ETC. IF DISTRICT. GIVE BUILDING NAME & STREET

PHOTO NO.

View facing Northwest from Earthlodge field showing remnant of Cornfield Mound showing two remaining sections and trenched area inside as a result of extensive excavations in 1930's. Tree line on right is location of Pre-Historic ditches of undetermined use. Portion of West Boundary of monument shows, with Ft. Hawkins School on horizon.





UNITED STATES DEPARTMENT OF THE INTERIOR  
NATIONAL PARK SERVICE

**NATIONAL REGISTER OF HISTORIC PLACES  
PROPERTY PHOTOGRAPH FORM**

FOR NPS USE ONLY

RECEIVED FEB 24 1976

DATE ENTERED

SEE INSTRUCTIONS IN *HOW TO COMPLETE NATIONAL REGISTER FORMS*  
TYPE ALL ENTRIES ENCLOSE WITH PHOTOGRAPH

**1 NAME**

HISTORIC

Trading Post Site

AND/OR COMMON

**2 LOCATION**

CITY, TOWN

Macon

— VICINITY OF

Bibb

COUNTY

Georgia

STATE

**3 PHOTO REFERENCE**

PHOTO CREDIT

B. Berg

DATE OF PHOTO

1965

NEGATIVE FILED AT

Ocmulgee National Monument

**4 IDENTIFICATION**

DESCRIBE VIEW, DIRECTION, ETC. IF DISTRICT. GIVE BUILDING NAME & STREET

PHOTO NO.

Aerial view looking South showing location of Trading Post Site-marked by logs, on the Middle Plateau, and its relationship to the Greater and Lesser Temple Mounds, and the Ocmulgee River on the far horizon





UNITED STATES DEPARTMENT OF THE INTERIOR  
NATIONAL PARK SERVICE

NATIONAL REGISTER OF HISTORIC PLACES  
PROPERTY PHOTOGRAPH FORM

FOR NPS USE ONLY

RECEIVED FEB 24 1976

DATE ENTERED

SEE INSTRUCTIONS IN *HOW TO COMPLETE NATIONAL REGISTER FORMS*  
TYPE ALL ENTRIES ENCLOSE WITH PHOTOGRAPH

**1** NAME

HISTORIC

McDougal Mound

AND/OR COMMON

1 Bi 5

**2** LOCATION

CITY, TOWN

Macon

VICINITY OF

Bibb

COUNTY

Georgia

STATE

**3** PHOTO REFERENCE

PHOTO CREDIT

B. Berg

DATE OF PHOTO

1973

NEGATIVE FILED AT

Ocmulgee National Monument

**4** IDENTIFICATION

DESCRIBE VIEW, DIRECTION, ETC. IF DISTRICT. GIVE BUILDING NAME & STREET

PHOTO NO.

View from park with camera facing North, along West boundary line of monument marked by the fence line. Area outside, left of fence line, was excavated in 1930's, but mound destruction had taken place prior to that due to road fill excavations in the 1920's. Mound is steep and area beyond mound is a sharp drop to a dead end housing





UNITED STATES DEPARTMENT OF THE INTERIOR  
NATIONAL PARK SERVICE

NATIONAL REGISTER OF HISTORIC PLACES  
PROPERTY PHOTOGRAPH FORM

FOR NFS USE ONLY

RECEIVED FEB 24 1976

DATE ENTERED

SEE INSTRUCTIONS IN *HOW TO COMPLETE NATIONAL REGISTER FORMS*  
TYPE ALL ENTRIES ENCLOSE WITH PHOTOGRAPH

**1** NAME

HISTORIC Southeast Mound

AND/OR COMMON

1Bi 4

**2** LOCATION

CITY, TOWN Macon —VICINITY OF Bibb COUNTY Georgia STATE

**3** PHOTO REFERENCE

PHOTO CREDIT B, Berg

DATE OF PHOTO 1965

NEGATIVE FILED AT Ocmulgee National Monument

**4** IDENTIFICATION

DESCRIBE VIEW, DIRECTION, ETC. IF DISTRICT. GIVE BUILDING NAME & STREET

PHOTO NO.

View with camera facing West to unexcavated portion of mound located on the Middle Plateau section of the monument. Figure standing at crest gives scale of small but definite mound. Site is in an open field that had been overfarmed historically, on edge of pine forest area.





UNITED STATES DEPARTMENT OF THE INTERIOR  
NATIONAL PARK SERVICE

NATIONAL REGISTER OF HISTORIC PLACES  
PROPERTY PHOTOGRAPH FORM

FOR NPS USE ONLY
RECEIVED FEB 24 1976
DATE ENTERED

SEE INSTRUCTIONS IN *HOW TO COMPLETE NATIONAL REGISTER FORMS*  
TYPE ALL ENTRIES ENCLOSE WITH PHOTOGRAPH

**1 NAME**

HISTORIC Dunlap Mound

AND/OR COMMON  
1 Bi 6

**2 LOCATION**

CITY, TOWN Macon \_\_\_\_\_ VICINITY OF Bibb COUNTY Georgia STATE

**3 PHOTO REFERENCE**

PHOTO CREDIT B. Berg DATE OF PHOTO January, 1974  
NEGATIVE FILED AT Ocmulgee National Monument

**4 IDENTIFICATION**

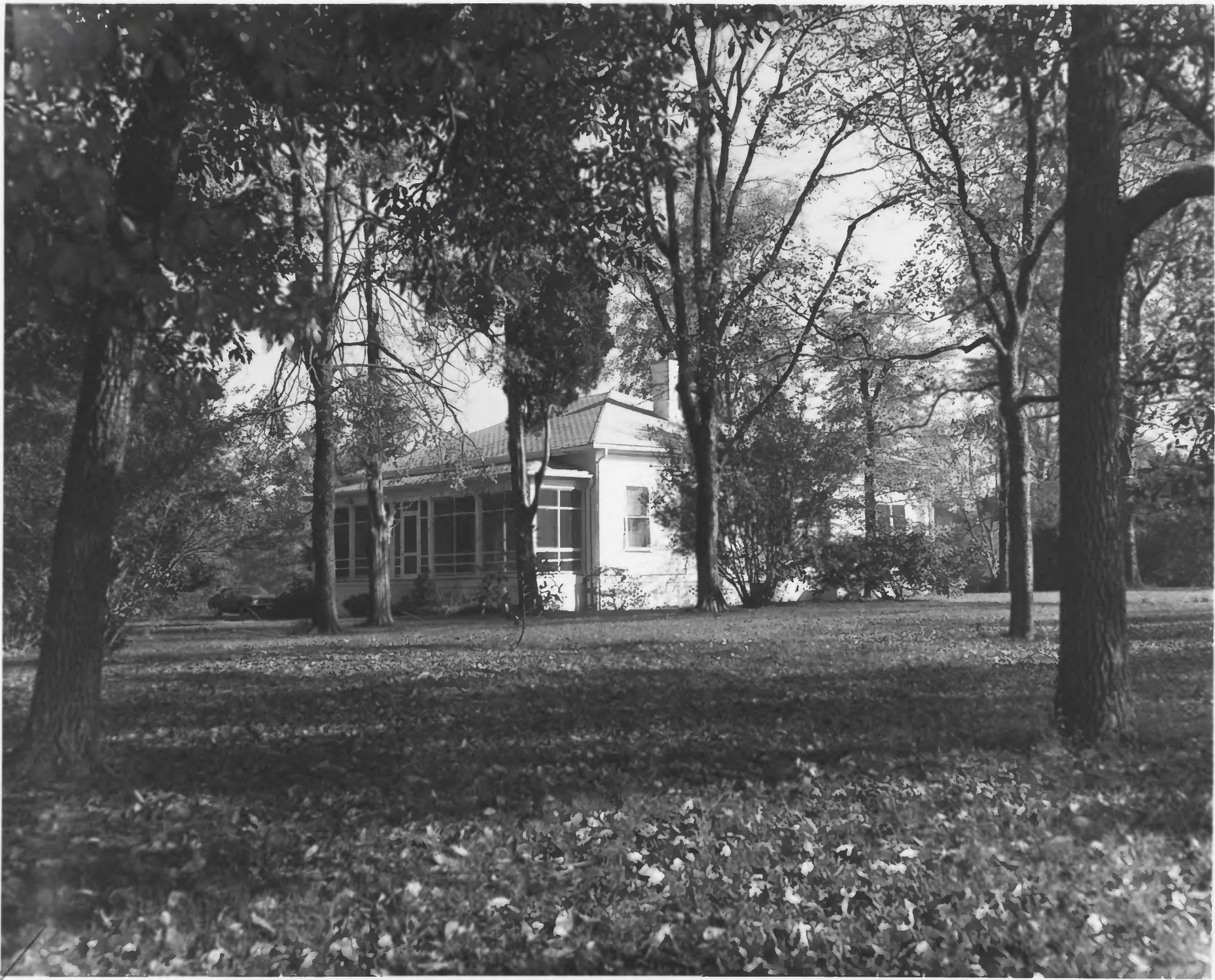
DESCRIBE VIEW, DIRECTION, ETC. IF DISTRICT. GIVE BUILDING NAME & STREET

PHOTO NO.

Camera facing West from Dunlap House yard to adjacent Dunlap Mound, between house and park entrance road.

Figure on mound gives scale for this obvious but small mound, located on the highest natural elevation in the monument.





UNITED STATES DEPARTMENT OF THE INTERIOR  
NATIONAL PARK SERVICE

**NATIONAL REGISTER OF HISTORIC PLACES  
PROPERTY PHOTOGRAPH FORM**

FOR NPS USE ONLY

RECEIVED FEB 24 1976

DATE ENTERED

SEE INSTRUCTIONS IN *HOW TO COMPLETE NATIONAL REGISTER FORMS*  
TYPE ALL ENTRIES ENCLOSE WITH PHOTOGRAPH

**1 NAME**

HISTORIC Dunlap House

AND/OR COMMON Residence #1

**2 LOCATION**

CITY, TOWN Macon VICINITY OF Bibb COUNTY Georgia STATE

**3 PHOTO REFERENCE**

PHOTO CREDIT D. Hannah DATE OF PHOTO 1970

NEGATIVE FILED AT Ocmulgee National Monument

**4 IDENTIFICATION**

DESCRIBE VIEW, DIRECTION, ETC. IF DISTRICT, GIVE BUILDING NAME & STREET

PHOTO NO.

Camera facing East showing the front and side of structure. Built in 1856, this is the only remaining structure of the plantation farm that was the historic use of what became of the monument. It has been refurbished twice and is the present residence of the monument Superintendent.





UNITED STATES DEPARTMENT OF THE INTERIOR  
NATIONAL PARK SERVICE

NATIONAL REGISTER OF HISTORIC PLACES  
PROPERTY PHOTOGRAPH FORM

FOR NPS USE ONLY

RECEIVED FEB 24 1976

DATE ENTERED

SEE INSTRUCTIONS IN *HOW TO COMPLETE NATIONAL REGISTER FORMS*  
TYPE ALL ENTRIES ENCLOSE WITH PHOTOGRAPH

**1** NAME

HISTORIC Fortification- Civil War

AND/OR COMMON

**2** LOCATION

CITY, TOWN Macon \_\_\_\_\_ VICINITY OF Bibb COUNTY Georgia STATE

**3** PHOTO REFERENCE

PHOTO CREDIT B. Berg

DATE OF PHOTO January, 1974

NEGATIVE FILED AT Ocmulgee National Monument

**4** IDENTIFICATION

DESCRIBE VIEW, DIRECTION, ETC. IF DISTRICT. GIVE BUILDING NAME & STREET

PHOTO NO.

Camera facing East from top of earthen embankment across enclosed area to embankment on opposite side. Figure is standing at edge of embankment. Foot placement shows the angle of incline of the embankment.





UNITED STATES DEPARTMENT OF THE INTERIOR  
NATIONAL PARK SERVICE

NATIONAL REGISTER OF HISTORIC PLACES  
PROPERTY PHOTOGRAPH FORM

FOR NPS USE ONLY

RECEIVED FEB 24 1976

DATE ENTERED

SEE INSTRUCTIONS IN *HOW TO COMPLETE NATIONAL REGISTER FORMS*  
TYPE ALL ENTRIES ENCLOSE WITH PHOTOGRAPH

**1** NAME

HISTORIC Earthlodge

AND/OR COMMON Council House

**2** LOCATION

CITY, TOWN Macon \_\_\_\_\_ VICINITY OF Bibb COUNTY Georgia STATE

**3** PHOTO REFERENCE

PHOTO CREDIT B. Berg DATE OF PHOTO 1968

NEGATIVE FILED AT Ocmulgee National Monument

**4** IDENTIFICATION

DESCRIBE VIEW, DIRECTION, ETC. IF DISTRICT. GIVE BUILDING NAME & STREET

PHOTO NO.

View looking to North showing restored outside of ceremonial earthlodge. Predominant are the long low entry way shown by the large log frame, the sloping sides, and the sharply peaked roof that is so characteristic of this type of structure, and so distinct from solid temple mounds. Covering the lodge is grass.