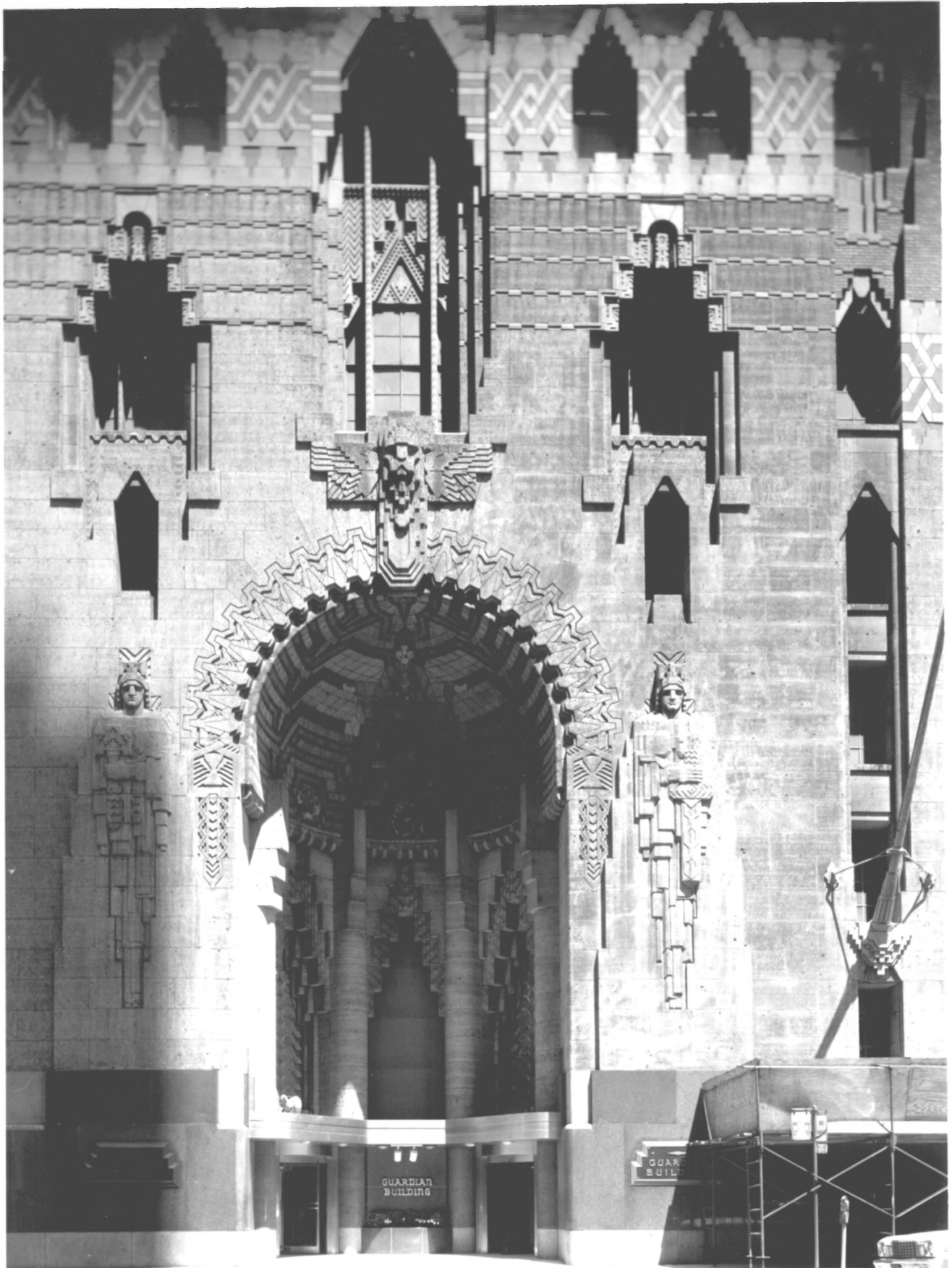




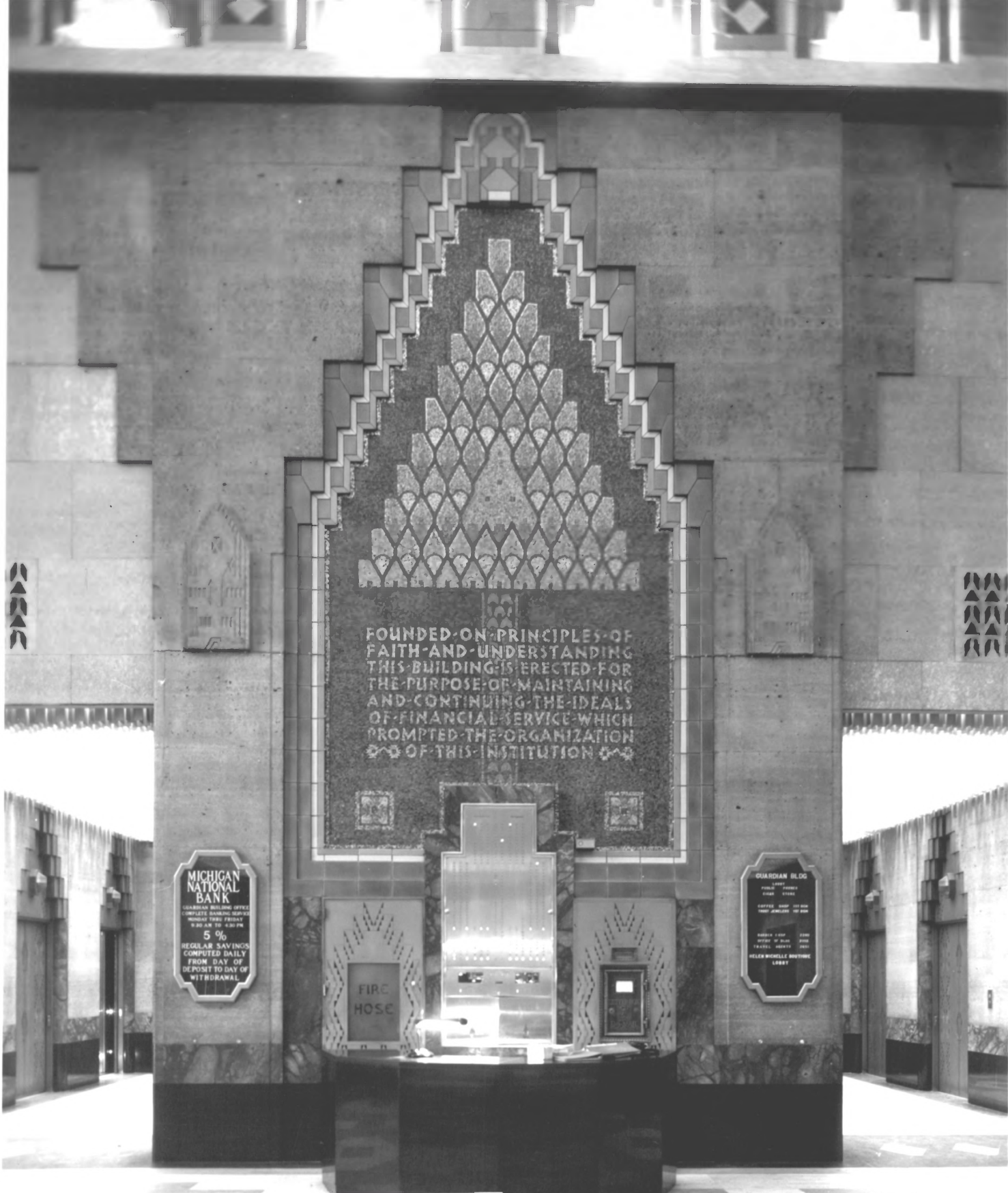
Guardian Building (Union Trust)
Detroit, Michigan Aerial View
Photo Credit Allen Stross, HABS. 1979



Guardian Building (Union Trust)
Detroit, Michigan Exterior, Front Entrance
Photo credit: Allen Stross. HABS, 1979



GUARDIAN BUILDING, Detroit, Michigan
Close-up of exterior Pewabic Tile 1980
Photo: Michcon



FOUNDED ON PRINCIPLES OF
FAITH AND UNDERSTANDING
THIS BUILDING IS ERECTED FOR
THE PURPOSE OF MAINTAINING
AND CONTINUING THE IDEALS
OF FINANCIAL SERVICE WHICH
PROMPTED THE ORGANIZATION
OF THIS INSTITUTION

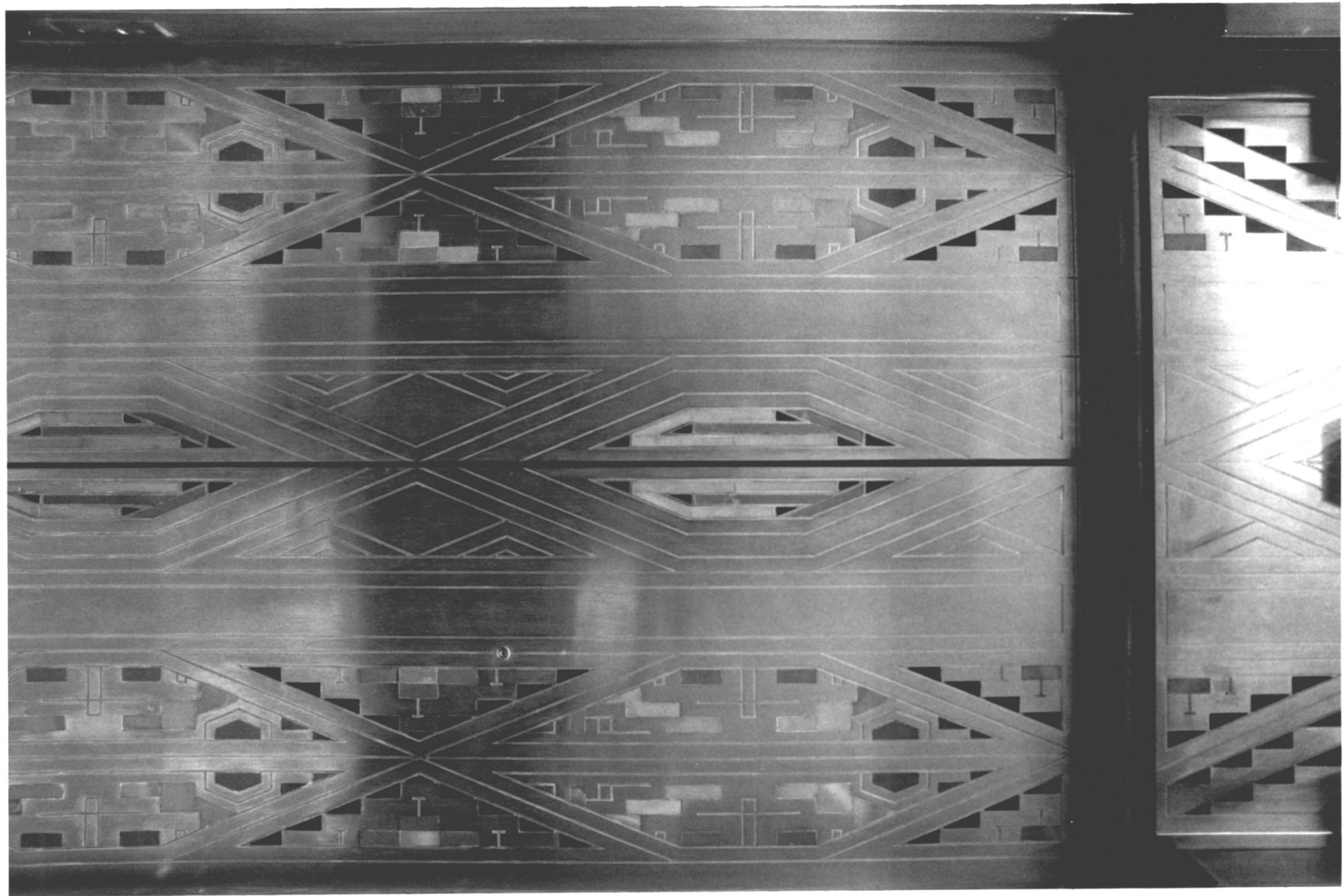
MICHIGAN NATIONAL BANK
GUARDIAN BUILDING OFFICE
COMPLETE BANKING SERVICE
MONDAY THROUGH FRIDAY
9:30 AM TO 4:30 PM
5%
REGULAR SAVINGS
COMPUTED DAILY
FROM DAY OF
DEPOSIT TO DAY OF
WITHDRAWAL

GUARDIAN BLDG
OFFICE
PUBLIC OFFICE
PHONE
OFFICE HOURS
MONDAY THROUGH FRIDAY
9:30 AM TO 4:30 PM
HELEN WICKELLE BOUTYNE
LOBBY

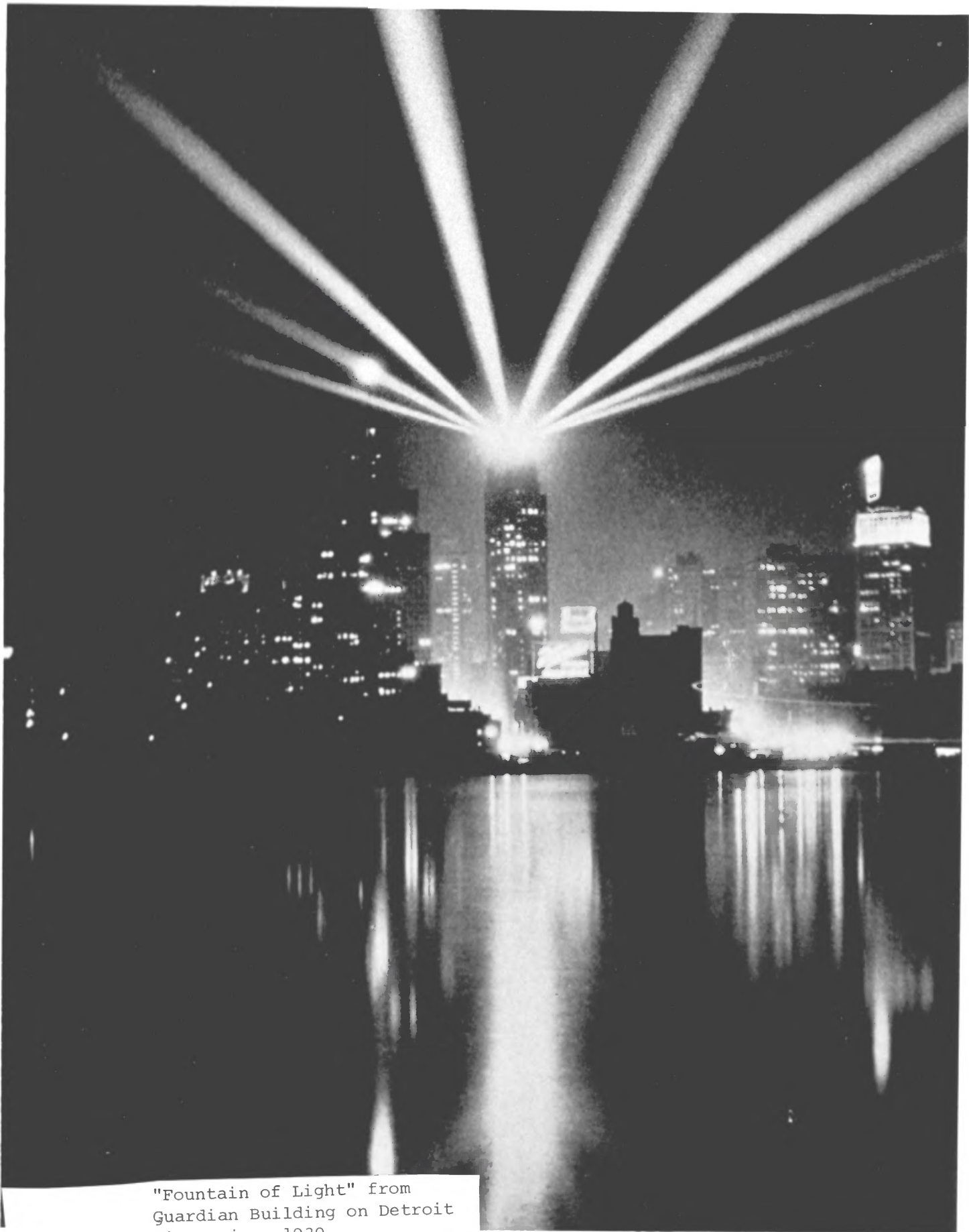
FIRE
HOSE

Guardian Building (Union Trust)
Detroit, Michigan Interior, Lobby, Security
Photo credit: Allen Stross, HABS, 1979





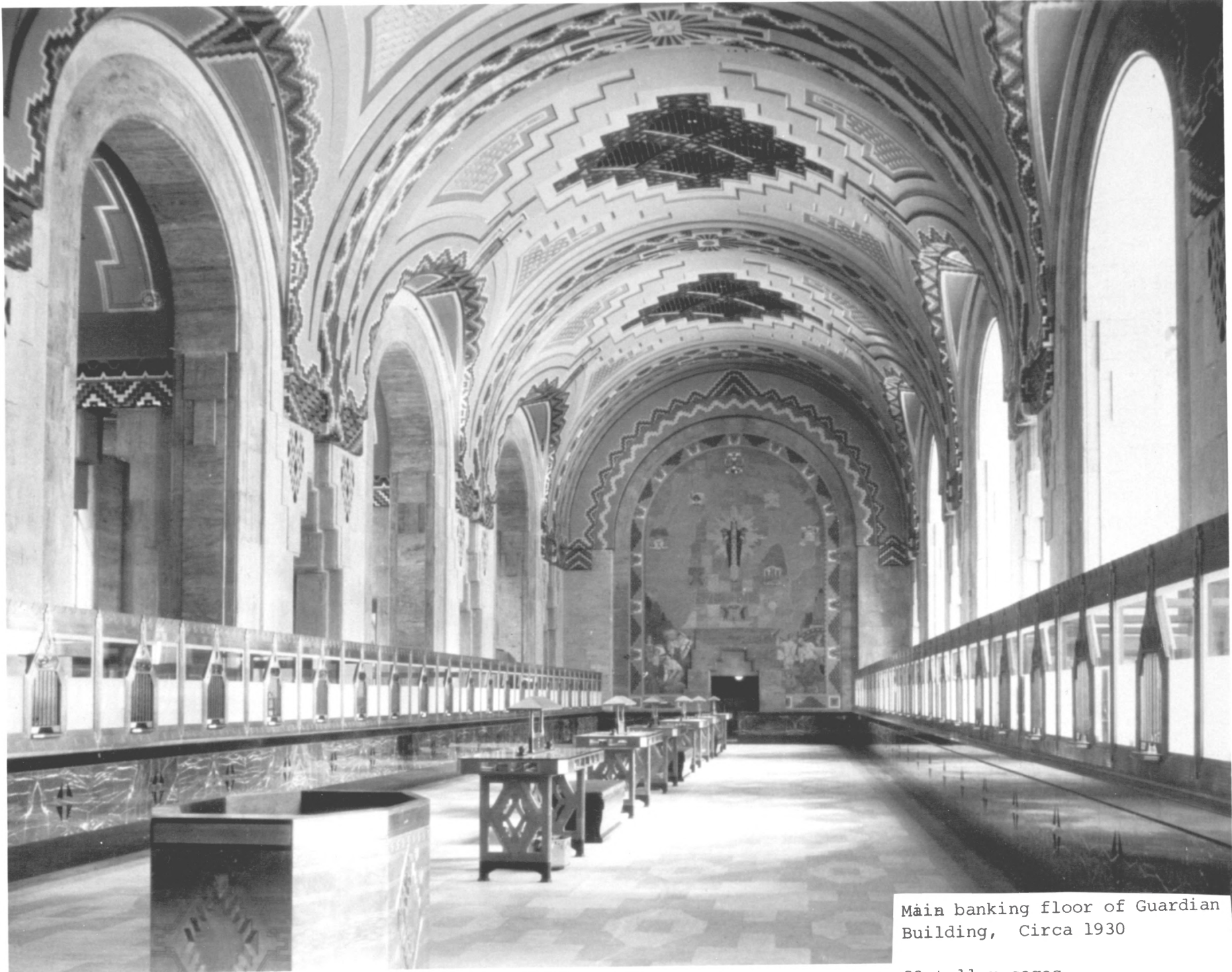




"Fountain of Light" from
Guardian Building on Detroit
River circa 1930



Main banking floor of Guardian Building, Circa 1930, looking toward lobby.



Main banking floor of Guardian Building, Circa 1930

80 teller cages



