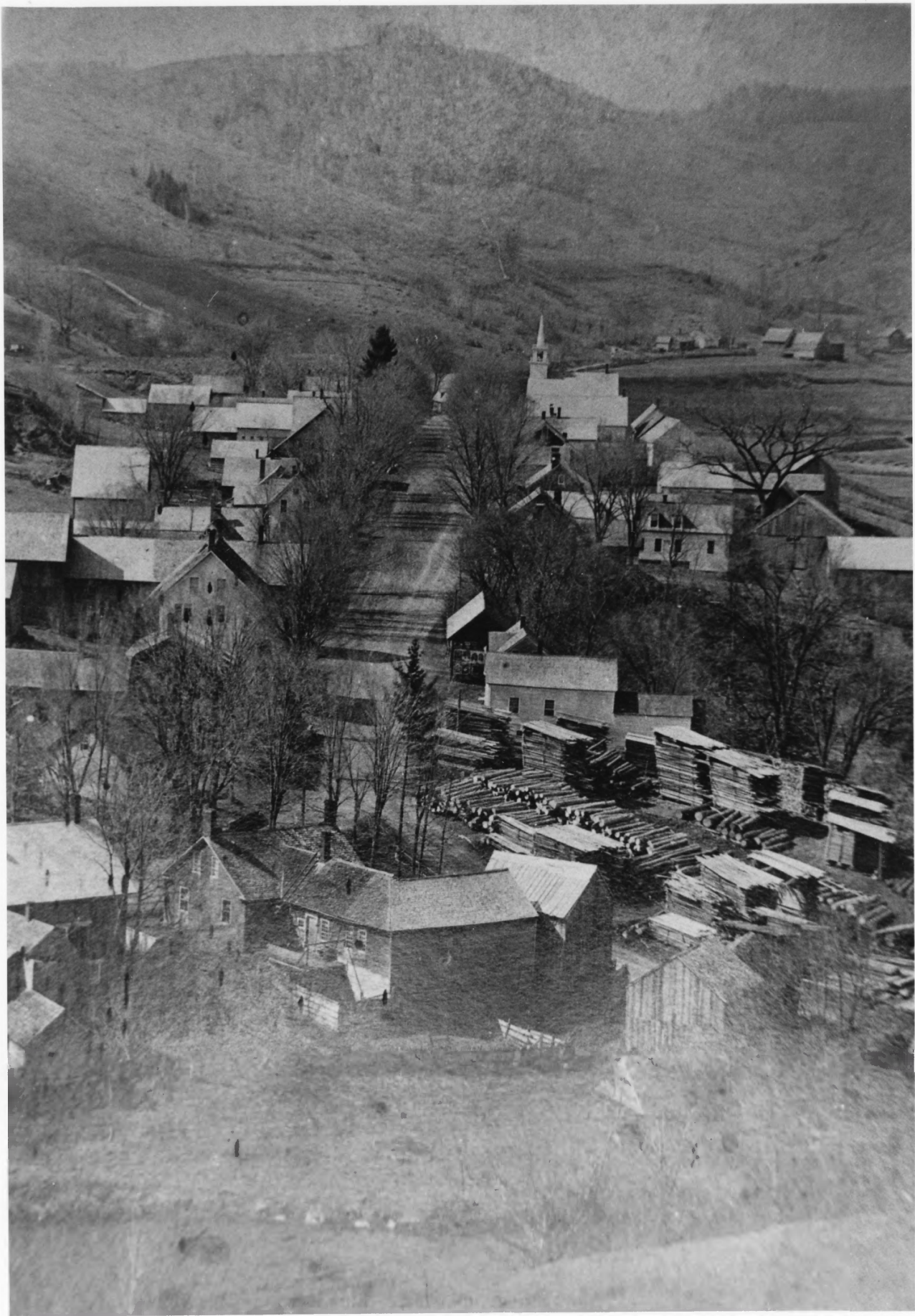




- 92-58
1. OVERVIEW OF TUNBRIDGE
TUNBRIDGE VILLAGE HISTORIC DISTRICT
 2. ORANGE COUNTY, VT
 3. AND COUSINS
 4. APRIL 1992
 5. NEGATIVE ON FILE: VERMONT DIVISION
FOR HISTORIC PRESERVATION
 6. VIEW LOOKING NORTH
 7. # 1



1. OVERVIEW OF TUNBRIDGE
Tunbridge Village Historic District
2. ORANGE COUNTY, VT
3. UNKNOWN
4. C. 1890
5. NEGATIVE ON FILE: VT DHP
6. VIEW LOOKING SOUTHWEST
7. #2

92-58



1. HUTCHINSON SCHOOL / DWELLING
Tunbridge Village Historic District & GARAGE, # 1 + la 92-43

2. ORANGE COUNTY, VT

3. JIM WICK

4. APRIL, 1992

5. NEGATIVE ON FILE: VT DHP

6. VIEW LOOKING NORTHEAST.

7. #3



1. HUTCHINSON CEMETERY, #1b,
Tunbridge Village Historic District
2. ORANGE COUNTY, VT
3. ANN COUSINS
4. FEBRUARY 1992
5. NEGATIVE ON FILE
6. VIEW LOOKING NORTH WEST
7. # 4

0



1. A. P. WOODWARD HOUSE, #2
Tunbridge Village Historic District
2. ORANGE COUNTY, VT
3. GARY SCHALL
4. OCTOBER 1991
5. NEGATIVE ON FILE: VT DHP
6. VIEW LOOKING SOUTHEAST
7. #5

91-277-23A



1. HEZEKIAH HUTCHINSON FARMSTEAD, #3
Tunbridge Village Historic District
2. ORANGE COUNTY, VT
3. GARY SCHALL
4. OCTOBER 1991
5. NEGATIVE ON FILE: VT DHP
6. VIEW LOOKING EAST
7. # 6

91-277-25A



1. HEZEKIAH HUTCHINSON BARN, #3
Tunbridge Village Historic District
2. ORANGE COUNTY, VT
3. GARY SCHALL
4. OCTOBER 1991
5. NEGATIVE ON FILE: VT DHP
6. VIEW LOOKING NORTHEAST
7. # 7

91-277-24A



1. FISK HOUSE #4
Tunbridge Village Historic District
2. ORANGE COUNTY, VT
3. GARY SCHALL
4. OCTOBER 1991
5. NEGATIVE ON FILE: VT DHP
6. VIEW LOOKING NORTH
7. #8

91-277-26A



1. HEZEKIAH HUTCHINSON HOUSE II, # 5
Tunbridge Village Historic District
2. ORANGE COUNTY, VT
3. GARY SCHALL
4. OCTOBER 1991
5. NEGATIVE ON FILE: VT DHP
6. VIEW LOOKING NORTHEAST
7. # 9

91-277-28A



1. BARN (TUCKER) , #6
Tunbridge Village Historic District
2. ORANGE, COUNTY, VT
3. GARY SCHALL
4. OCTOBER 1991
5. NEGATIVE ON FILE: VT DHP
6. VIEW LOOKING NORTHEAST
7. # 10

91-277-29-A



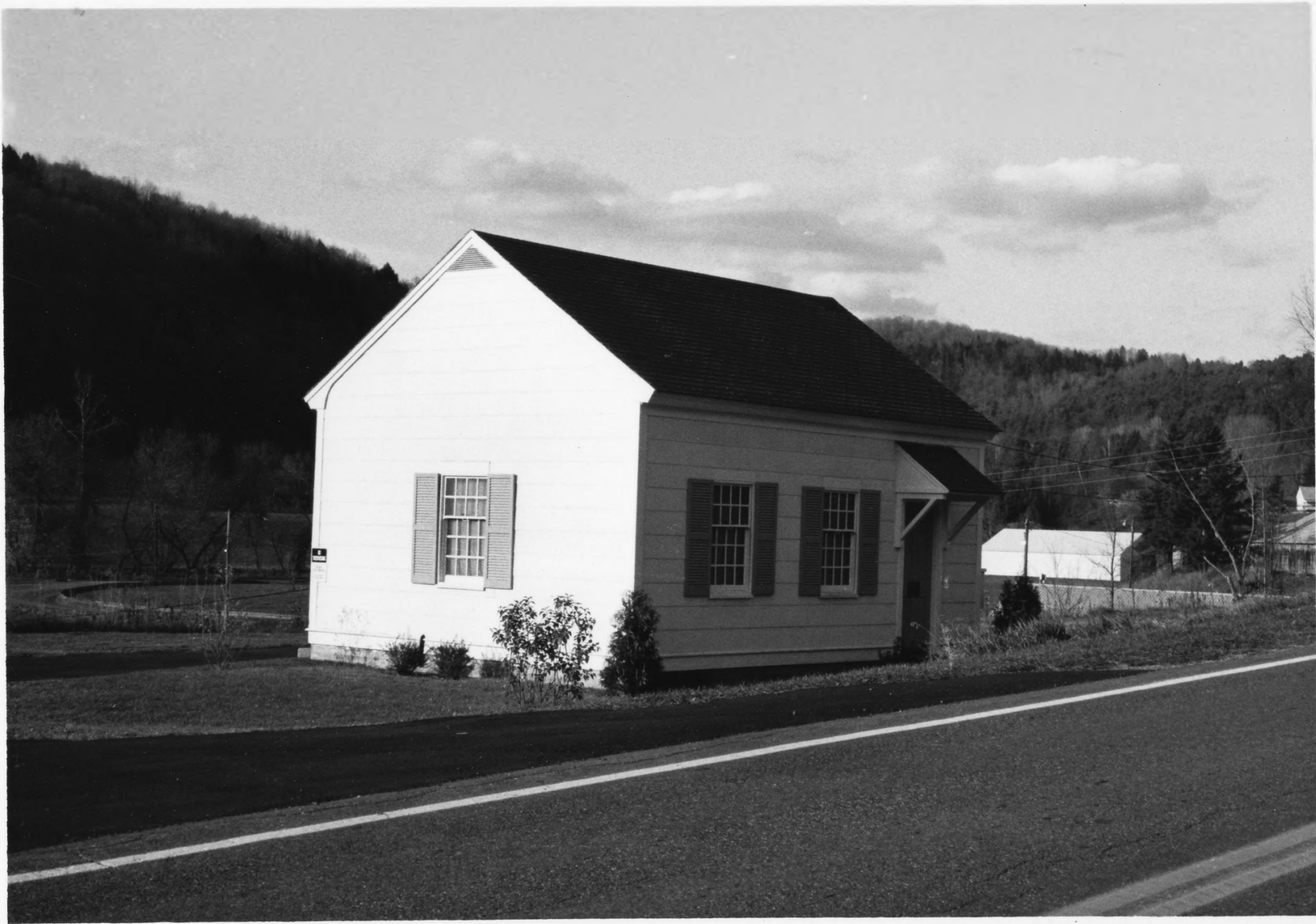
1. WAGON REPAIR SHOP
& CORN CRIB, #6
Tunbridge Village Historic District
2. ORANGE CO, VT
3. GARY SCHALL
4. OCTOBER 1991
5. NEGATIVE ON FILE: VT DHP
6. VIEW LOOKING NORTH EAST
7. # 11

91-277-32A



1. J. TUCKER GAMBREL, #6
Tunbridge Village Historic District
2. ORANGE, CO., VT
3. GARY SCHALL
4. OCTOBER 1991
5. NEGATIVE ON FILE: VT DHP
6. VIEW LOOKING NORTH
7. # 12

91-277-30A



1. NEW ENGLAND TELEPHONE COMPANY, #7
Tunbridge Village Historic District
2. ORANGE COUNTY, VT
3. GARY SCHALL
4. OCTOBER 1991
5. NEGATIVE ON FILE: VT DHP
6. VIEW LOOKING NORTH
7. # 13

91-277-31A



1. VILLAGE CEMETERY , # 8
Tunbridge Village Historic District
2. ORANGE CO., VT
3. GARY SCHALL
4. AUGUST 1991
5. NEGATIVE ON FILE: VT DHP
6. VIEW LOOKING WEST
7. # 14

91-278-11



1. VILLAGE CEMETERY, #8
Tunbridge Village Historic District
2. ORANGE CO, VT
3. GARY SCHALL
4. OCTOBER 1991
5. NEGATIVE ON FILE: VT DHP
6. VIEW LOOKING SOUTHEAST
7. # 15

91-280-21A



TOWN OFFICES

TUNRIDGE VT 1761

PUBLIC LIBRARY

TOWN
CLERK

1. MARKET SCHOOL, #9
Tunbridge Village Historic District
2. ORANGE CO, VT
3. GARY SCHALL
4. OCTOBER 1991
5. NEGATIVE ON FILE: VT DHP
6. VIEW LOOKING NORTHWEST
7. # 16

91-277-33A



1. CONGREGATIONAL CHURCH , #10 92-44

Tunbridge Village Historic District
PARSONAGE

2. ORANGE CO., VT

3. JIM WICK

4. APRIL 1992

5. NEGATIVE ON FILE: VT DHP

6. VIEW LOOKING NORTH EAST

7. # 17



1. CONGREGATIONAL CHURCH, #11
Tunbridge Village Historic District
2. ORANGE, CO, VT
3. JIM WICK
4. APRIL 1992
5. NEGATIVE ON FILE: VT DHP
6. VIEW LOOKING NORTHWEST
7. # 18

92-43



1. DR. ORMAL TERRY HOUSE, #12
Tunbridge Village Historic District
2. ORANGE COUNTY, VT
3. JIM WICK
4. APRIL 1992
5. NEGATIVE ON FILE; VT DHP
6. VIEW LOOKING SOUTH EAST
7. # 19

92-44



1982 - 1983 - 1984 - 1985 - 1986 - 1987 - 1988 - 1989 - 1990 - 1991 - 1992 - 1993 - 1994 - 1995 - 1996 - 1997 - 1998 - 1999 - 2000 - 2001 - 2002 - 2003 - 2004 - 2005 - 2006 - 2007 - 2008 - 2009 - 2010 - 2011 - 2012 - 2013 - 2014 - 2015 - 2016 - 2017 - 2018 - 2019 - 2020 - 2021 - 2022 - 2023 - 2024 - 2025

1. DR. ORMAN TERRY HOUSE, #12 92-44
& BARN

Tunbridge Village Historic District

2. ORANGE COUNTY, VT

3. JIM WICK

4. APRIL 1992

5. NEGATIVE ON FILE: VT. THP

6. VIEW LOOKING EAST

7. # 20



1. WIGHT HOUSE & BARN, #13 92-44
Tunbridge Village Historic District
2. ORANGE COUNTY, VT
3. JIM WICK
4. APRIL 1992
5. NEGATIVE ON FILE: VT DHP
6. VIEW LOOKING NORTHWEST
7. # 21



1. TOWN HALL, #14
Tunbridge Village Historic District
2. ORANGE COUNTY, VT
3. JIM WICK
4. APRIL 1992
5. NEGATIVE ON FILE: VT DHP
6. VIEW LOOKING NORTH WEST
7. #22

92-44



1. WILLIAM P. BROWN
HOUSE & BARN, #15
Tunbridge Village Historic District

2. ORANGE COUNTY, VT

3. JIM WICK

4. APRIL 1992

5. NEGATIVE ON FILE: VT DHP

6. VIEW LOOKING WEST

7. # 23

92-44



1. MASON K. GRIFFITH
HOUSE & BARN, #16 92-44
Tunbridge Village Historic District

2. ORANGE COUNTY, VT

3. JIM WICK

4. APRIL 1992

5. NEGATIVE ON FILE: VT DHP

6. VIEW LOOKING NORTHEAST

7. # 24



1. JOHN N. WOODWARD, #17

92-58

HOUSE
Tunbridge Village Historic District

2. ORANGE COUNTY, VT

3. ANN COUSINS

4. APRIL 1992

5. NEGATIVE ON FILE: VT DHP

6. VIEW LOOKING NORTHWEST

7. # 25



BOARDWAY & CILLEY
MEMORIALS

(802) 889-3300

1. TEA HOUSE , #17A
Tunbridge Village Historic District
2. ORANGE CO., VT
3. GARY SCHALL
4. OCTOBER 1991
5. NEGATIVE ON FILE: VT DHP
6. VIEW LOOKING EAST
7. # 26

91-280-1A



1. BARN (WOODWARD), #17
Tunbridge Village Historic District
2. ORANGE COUNTY, VT
3. GARY SCHALL
4. OCTOBER 1991
5. NEGATIVE ON FILE : VT DHP
6. VIEW LOOKING NORTHEAST
7. # 27

91-280-2A



1. DYER CILLEY HOUSE, # 18
Turbridge Village Historic District
2. ORANGE COUNTY, VT
3. GARY SCHALL
4. AUGUST 1991
5. NEGATIVE ON FILE: VT DHP
6. VIEW LOOKING WEST
7. # 28

91-278 #23



1. E. O. LYMAN HOUSE, #19
Tunbridge Village Historic District
2. ORANGE COUNTY, VT
3. JIM WICK
4. APRIL 1992
5. NEGATIVE ON FILE: VT DHP
6. VIEW LOOKING SOUTH
7. #29

92-44



1. JOHN LOVEJOY HOUSE, #20
Tunbridge Village Historic District
2. ORANGE COUNTY, VT
3. JIM WICK
4. APRIL 1992
5. NEGATIVE ON FILE: VT DIP
6. VIEW LOOKING NORTH
7. #30

92-44



91-280-6A

1. RUBY KEYSETZ HOUSE
& MOBILE HOME, #21
Tunbridge Village Historic District
2. ORANGE COUNTY, VT
3. GARZY SCHALL
4. OCTOBER 1991
5. NEGATIVE ON FILE: VT DHP
6. VIEW LOOKING EAST
7. # 31



1. OSMAN P. FAZLHAM HOUSE, # 22
Tunbridge Village Historic District
2. ORANGE COUNTY, VT
3. JIM WICK
4. APRIL 1992
5. NEGATIVE ON FILE: VT DHP
6. VIEW LOOKING NORTH
7. # 32

92-44



1. J. S. NOYES HOUSE, #23
Tunbridge Village Historic District
2. ORANGE CO., VT
3. CHARLY SCHALL
4. SEPTEMBER 1991
5. NEGATIVE ON FILE: VT DHP
6. VIEW LOOKING SOUTHEAST
7. #33

91-282-13A



1. BARN (NOYES) , # 23
Tunbridge Village Historic District
2. ORANGE, COUNTY, VT
3. JIM WICK
4. APRIL 1992
5. NEGATIVE ON FILE! VT DHP
6. VIEW LOOKING SOUTHEAST
7. # 34

9244



1. PORTER CUSHMAN HOUSE, # 24
Tunbridge Village Historic District
2. ORANGE, COUNTY, VT
3. GARY SCHALL
4. SEPTEMBER 1991
5. NEGATIVE ON FILE: VT DHP
6. VIEW LOOKING NORTH WEST
7. # 35

91-281-9A



UNITED STATES POST OFFICE
TUNBRIDGE, VT. 05077

♿
PARKING
FOR HANDICAPPED
ONLY

1. POST OFFICE, #25
Tunbridge Village Historic District
2. ORANGE, COUNTY, VT
3. JIM WICK
4. APRIL 1992
5. NEGATIVE ON FILE! VT DHP
6. VIEW LOOKING NORTHEAST
7. #36

92-69-32A



1. J. C. HALL STORE, # 26
Tunbridge Village Historic District

2. ORANGE COUNTY, VT

3. JIM WICK

4. APRIL 1992

5. NEGATIVE ON FILE: VT DHP

6. VIEW LOOKING NORTH

7. # 37

92-44



1. C. BAXTER HOUSE, # 27
Tunbridge Village Historic District
2. ORANGE COUNTY, VT
3. JIM WICK
4. APRIL 1992
5. NEGATIVE ON FILE: VT. DHP
6. VIEW LOOKING NORTHEAST
7. # 38

92-69-33A



1. W. PUTNAM HOUSE, #28
Tunbridge Village Historic District
2. ORANGE COUNTY, VT
3. GARY SCHALL
4. OCTOBER 1991
5. NEGATIVE ON FILE: VT DHP
6. VIEW LOOKING SOUTHEAST
7. # 39

91-280-18A



The Village Store
TUNBRIDGE, VERMONT

PEPSI
TUNBRIDGE VILLAGE
STORE

MEGABUCKS
Buy Your
Tickets Here!

ICE

1. THE KING STORE, #29
Tunbridge Village Historic District
2. ORANGE COUNTY, VT
3. JIM WICK
4. APRIL 1992
5. NEGATIVE ON FILE: VT DHP
6. VIEW LOOKING NORTH EAST
7. #40

92-43



1. A. N. KING HOUSE, #30
Tunbridge Village Historic District
2. ORANGE COUNTY, VT
3. GARY SCHALL
4. OCTOBER 1991
5. NEGATIVE ON FILE: VT DHP
6. VIEW LOOKING SOUTHEAST
7. # 41

91-280-11A



1. EARL P. CUSHMAN HOUSE, #31
Tunbridge Village Historic District
2. ORANGE COUNTY, VT
3. GARY SCHALL
4. SEPTEMBER 1991
5. NEGATIVE ON FILE: VT. DHP
6. VIEW LOOKING SOUTH
7. #42

91-282-4A

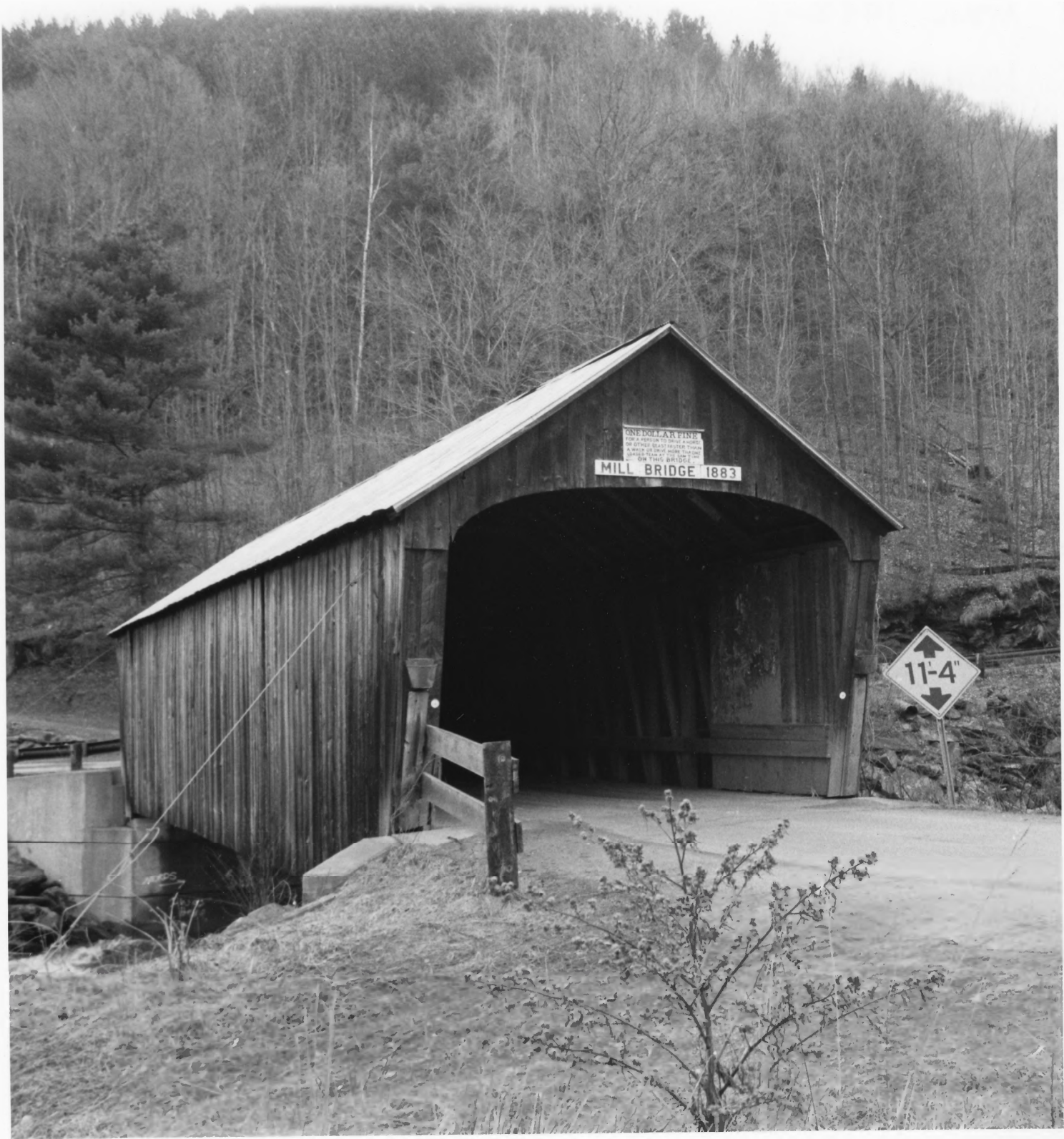


1. M. SMITH HOUSE, #32
Tunbridge Village Historic District
2. ORANGE COUNTY, VT
3. CARY SCHALL
4. SEPTEMBER 1991
5. NEGATIVE ON FILE: VT DHP
6. VIEW LOOKING SOUTHEAST
7. #43

91-280-12A



1. HAYWARD & KIBBY MILL DAM, #33
TUNBRIDGE VILLAGE HISTORIC DISTRICT
2. ORANGE COUNTY, VT 92-93
3. JIM WICK
4. APRIL 1992
5. NEGATIVE ON FILE: VT. DHP
6. VIEW LOOKING EAST
7. #44



GENEVA AR FINE
FOR A PERSON TO DRIVE A WAGON
OR OTHER ROAD VEHICLE THROUGH
THIS BRIDGE AT THIS TIME
SEE TRUCK AND TRAILER

MILL BRIDGE 1883

11'-4"

1. MILL COVERED BRIDGE, #34
Tunbridge Village Historic District
2. ORANGE COUNTY, VT
3. JIM WICK
4. APRIL 1992
5. NEGATIVE ON FILE: VT DHP
6. VIEW LOOKING NORTHWEST
7. #45

92-43



1. KIBBY BARN & J.L. HALL HOUSE, #35, #36
Tunbridge Village Historic District

92-43

2. ORANGE COUNTY, VT

3. JIM WICK

4. APRIL 1992

5. NEGATIVE ON FILE: VT DHP

6. VIEW LOOKING NORTHWEST

7. #46



1. J. L. HALL HOUSE, # 36
Tunbridge Village Historic District
2. ORANGE COUNTY, VT
3. JIM WICK
4. APRIL 1992
5. NEGATIVE ON FILE: VT DHP
6. VIEW LOOKING NORTHEAST
7. # 47

92-43



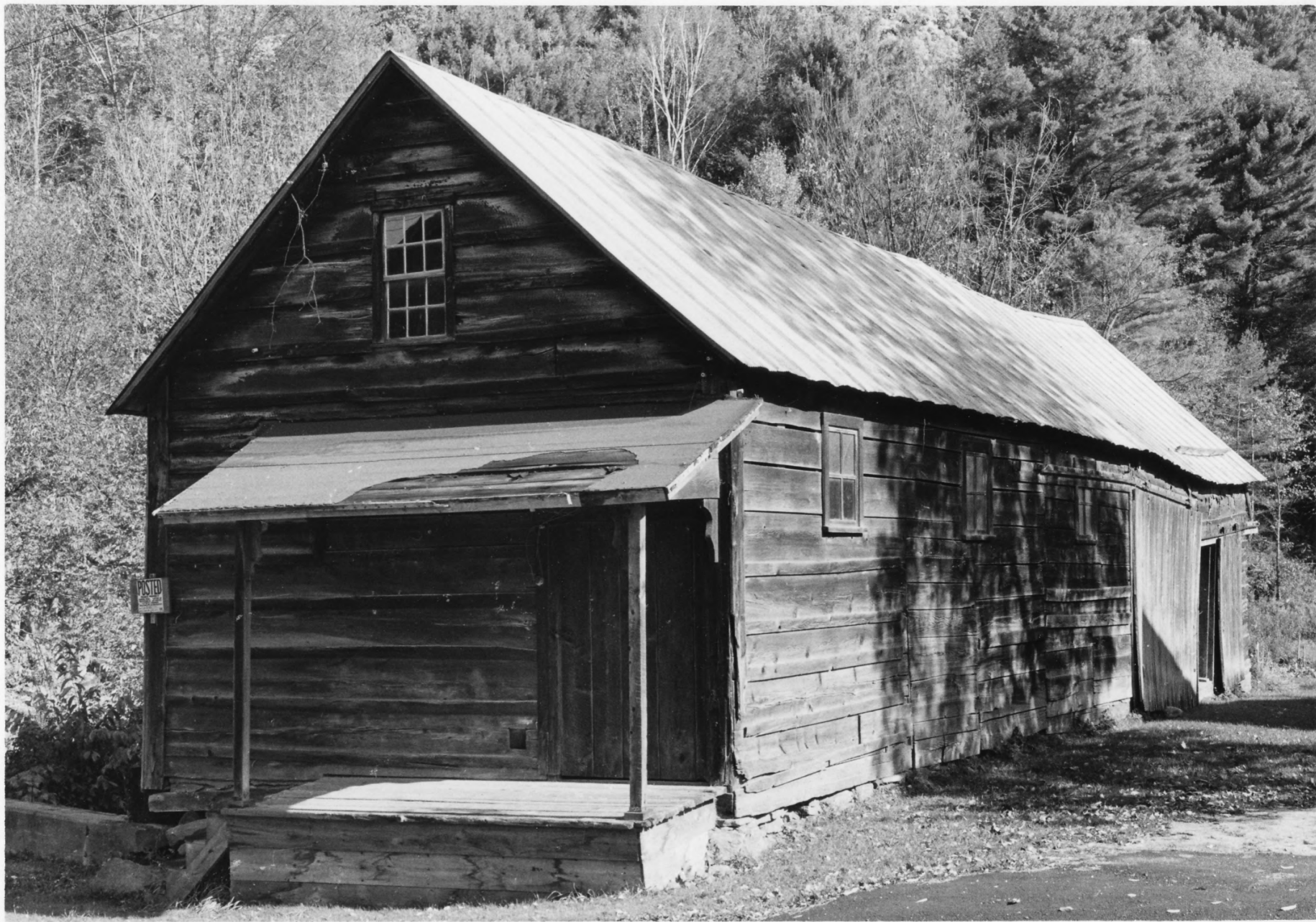
1. BLACKSMITH SHOP/DWELLING, #37
Tunbridge Village Historic District
2. ORANGE COUNTY, VT
3. GARY SCHALL
4. OCTOBER 1991
5. NEGATIVE ON FILE: VT PAP
6. VIEW LOOKING NORTHWEST
7. #48

91-281-11A



1. HARLEY FARNHAM HOUSE, # 38
Tunbridge Village Historic District
2. ORANGE COUNTY, VT
3. GARY SCHALL
4. OCTOBER 1991
5. NEGATIVE ON FILE: VT IHP
6. VIEW LOOKING NORTH
7. # 49

91-280-17A



1. GRAIN STORE, #38a
Tunbridge Village Historic District
2. ORANGE COUNTY, VT
3. GARY SCHALL
4. SEPTEMBER 1991
5. NEGATIVE ON FILE: VT DHP
6. VIEW LOOKING NORTH
7. #50

91-281-13A



1. HON. E. L. TRACEY HOUSE, # 39
Tunbridge Village Historic District
2. ORANGE COUNTY, VT
3. GARY SCHALL
4. OCTOBER 1991
5. NEGATIVE ON FILE: VT DHP
6. VIEW LOOKING NORTHWEST
7. #51

91-280-16A



1. BARN & CHICKEN COOP (TRACEY), # 39
TUNBRIDGE VILLAGE HISTORIC DISTRICT 92-43
2. ORANGE COUNTY, VT
3. JIM WICK
4. APRIL 1992
5. NEGATIVE ON FILE: VT DHP
6. VIEW LOOKING WEST
7. #52



1. MRS. M. FOSTER HOUSE, #40
Tunbridge Village Historic District
2. ORANGE COUNTY, VT
3. GARY SCHALL
4. OCTOBER 1991
5. NEGATIVE ON FILE: VT DHP
6. VIEW LOOKING SOUTH
7. #53

91-280-15A



1. NOYES BOARDING HOUSE, # 41
Tunbridge Village Historic District.
2. ORANGE COUNTY, VT
3. GARY SCHALL
4. OCTOBER 1991
5. NEGATIVE ON FILE: VT. DHP
6. VIEW LOOKING SOUTH
7. # 54

91-280-14A



1. ROUTE 110 CONCRETE BRIDGE, #42
Tunbridge Village Historic District
2. ORANGE COUNTY, VT
3. JIM WICK
4. APRIL 1992
5. NEGATIVE ON FILE: VT DPH
6. VIEW LOOKING SOUTH
7. # 55

92-43



92-93

1. TOWN SHEP, #43
Tunbridge Village Historic District
2. ORANGE COUNTY, VT
3. JIM WICK
4. APRIL 1992
5. NEGATIVE ON FILE: VT DHP
6. VIEW LOOKING NORTH
7. #56



1. STEPHEN NOYES HOUSE, #44
Tunbridge Village Historic District

92-43

2. ORANGE COUNTY, VT

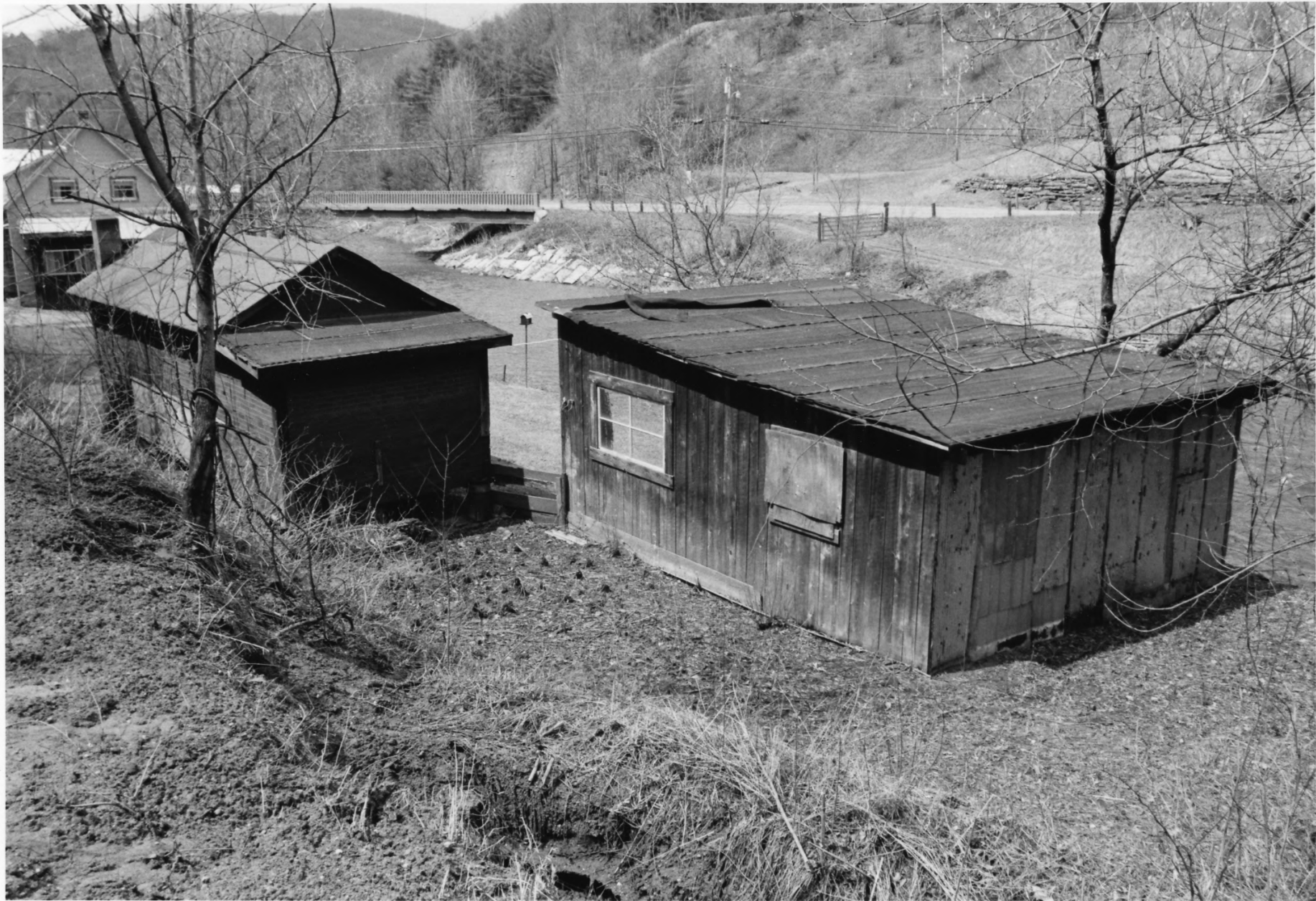
3. JIM WICK

4. APRIL 1992

5. NEGATIVE ON FILE: VT DHP

6. VIEW LOOKING WEST

7. #57



1. SHEDS (S. NOYES), #44
Tunbridge Village Historic District 92-43
2. ORANGE COUNTY, VT
3. JIM WICK
4. APRIL 1992
5. NEGATIVE ON FILE! VT DHP
6. VIEW LOOKING WEST
7. #58



1. GAYS MILL DAM, #45
Tunbridge Village Historic District
 2. ORANGE COUNTY, VT
 3. JIM WICK
 4. APRIL 1992
 5. NEGATIVE ON FILE: VT DHP
 6. VIEW LOOKING NORTH
 7. #59
- 9243



1. GAY HOUSE , #46
Tunbridge Village Historic District
2. ORANGE COUNTY, VT
3. GARZA SEHALL
4. SEPTEMBER 1991
5. NEGATIVE ON FILE! VT DHP
6. VIEW LOOKING WEST
7. #60

91-281-19A



1. ELISHA TRACEY HOUSE, #4792-43
Tunbridge Village Historic District
2. ORANGE COUNTY, VT
3. JIM WICK
4. APRIL 1992
5. NEGATIVE ON FILE: VT DHP
6. VIEW LOOKING WEST
7. #61



1. J. M. WHITNEY HOUSE, #48 92-43
Tunbridge Village Historic District

2. ORANGE COUNTY, VT

3. JIM WICK

4. APRIL 1992

5. NEGATIVE ON FILE: VT DHP

6. VIEW LOOKING SOUTHWEST

7. #62



91-281-22A

1. DISTRICT #18 SCHOOL, #49
Tunbridge Village Historic District
2. ORANGE COUNTY, VT
3. GARY SCHALL
4. SEPTEMBER 1991
5. NEGATIVE ON FILE: VT DAP
6. VIEW LOOKING SOUTHWEST
7. #63



SHERIFF
DEPT.

NO ALCOHOLIC
BEVERAGES
ALLOWED BY ORDER
ENFORCED

91-277-3A

1. NORTH GATE TICKET OFFICE, #50
Tunbridge Village Historic District
2. ORANGE COUNTY, VT
3. GARY SCHALL
4. OCTOBER 1991
5. NEGATIVE ON FILE: VT DHP
6. VIEW LOOKING WEST
7. # 64



1. POLICE STATION, #51
Tunbridge Village Historic District
2. ORANGE COUNTY, VT
3. JIM WICK
4. MAY 1992
5. NEGATIVE ON FILE: VT DHP
6. VIEW LOOKING NORTH
7. # 65

92-69-3A



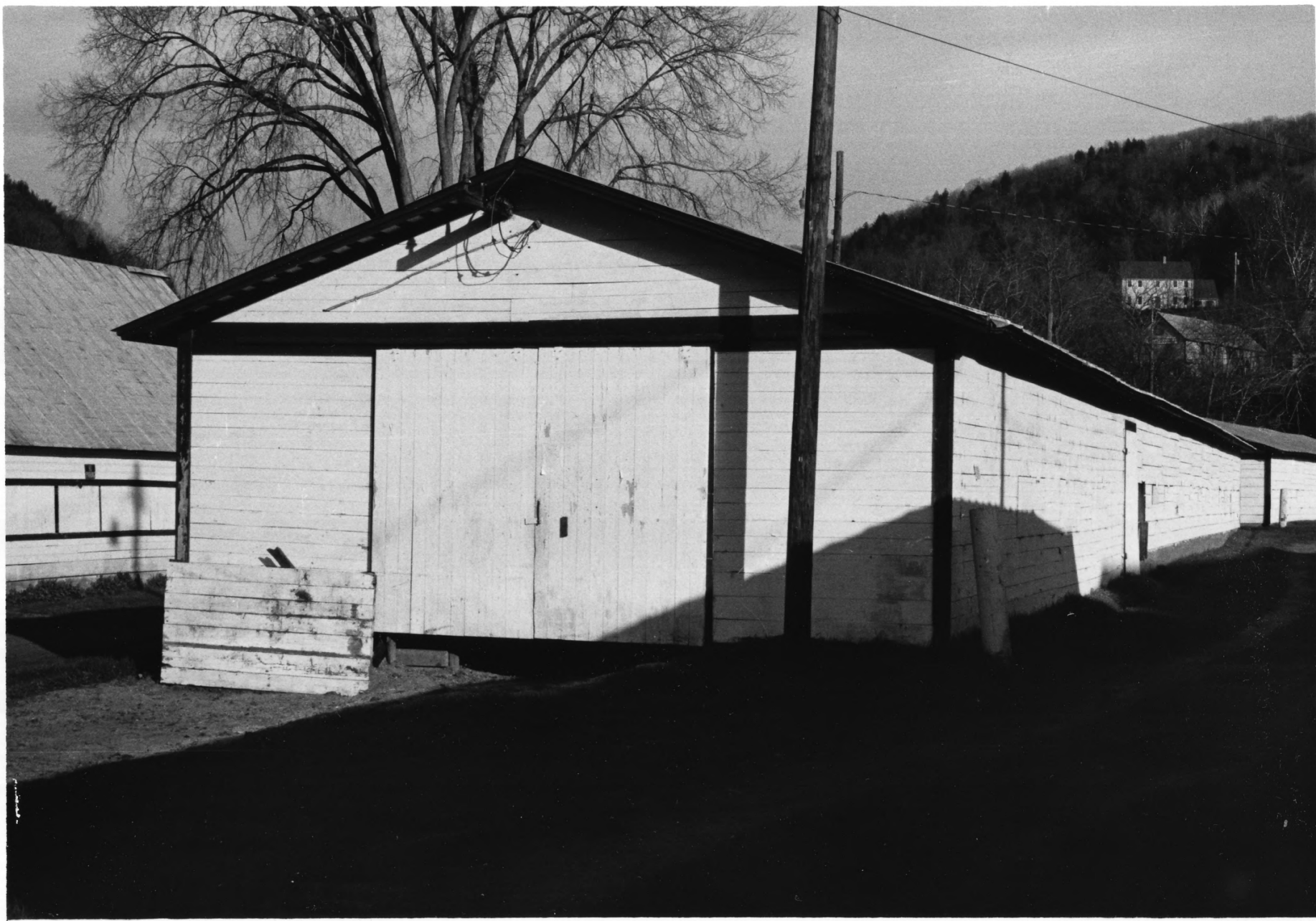
1. PLAYGROUND/GRANGE BUILDING, #52
 ↳ NORTH GATE TICKET OFFICE
 Tunbridge Village Historic District
2. ORANGE COUNTY, VT
3. GARY SCHALL
4. OCTOBER 1991
5. NEGATIVE ON FILE: VT DHP
6. VIEW LOOKING NORTH
7. #66

91-277-5A



1. OXEN BARN, #56
Tunbridge Village Historic District
2. ORANGE COUNTY, VT
3. JIM WICK
4. MAY 1992
5. NEGATIVE ON FILE: VT DHP
6. VIEW LOOKING NORTHEAST
7. #67

92-69-8A



1. HOLSTEIN CATTLE BARN #57
Tunbridge Village Historic District
2. ORANGE COUNTY, VT
3. GARY SCHALL
4. OCTOBER 1991
5. NEGATIVE ON FILE: VT DHP
6. VIEW LOOKING NORTHWEST
7. #68

91-279-31A



91-283-19A

1. ROUND BAMPSTAND, #60
Tunbridge Village Historic District
2. ORANGE COUNTY, VT
3. GARY SCHALL
4. OCTOBER 1991
5. NEGATIVE ON FILE: VT DHP
6. VIEW LOCKING NORTHWEST
7. #69



1. FLOZAL HALL & SECRETARY'S #58, #59, #61

BUILDING & SHORTY'S COOK SHACK
Tunbridge Village Historic District

91-283-11A

2. ORANGE COUNTY, VT

3. GARY SCHALL

4. OCTOBER 1991

5. NEGATIVE ON FILE: VT DHP

6. VIEW LOOKING NORTHWEST

7. #70



1. DEVON BARN, #62
Tunbridge Village Historic District
2. ORANGE COUNTY, VT
3. JIM WICK
4. MAY 1992
5. NEGATIVE ON FILE: VT DHP
6. VIEW LOOKING SOUTHEAST
7. #71

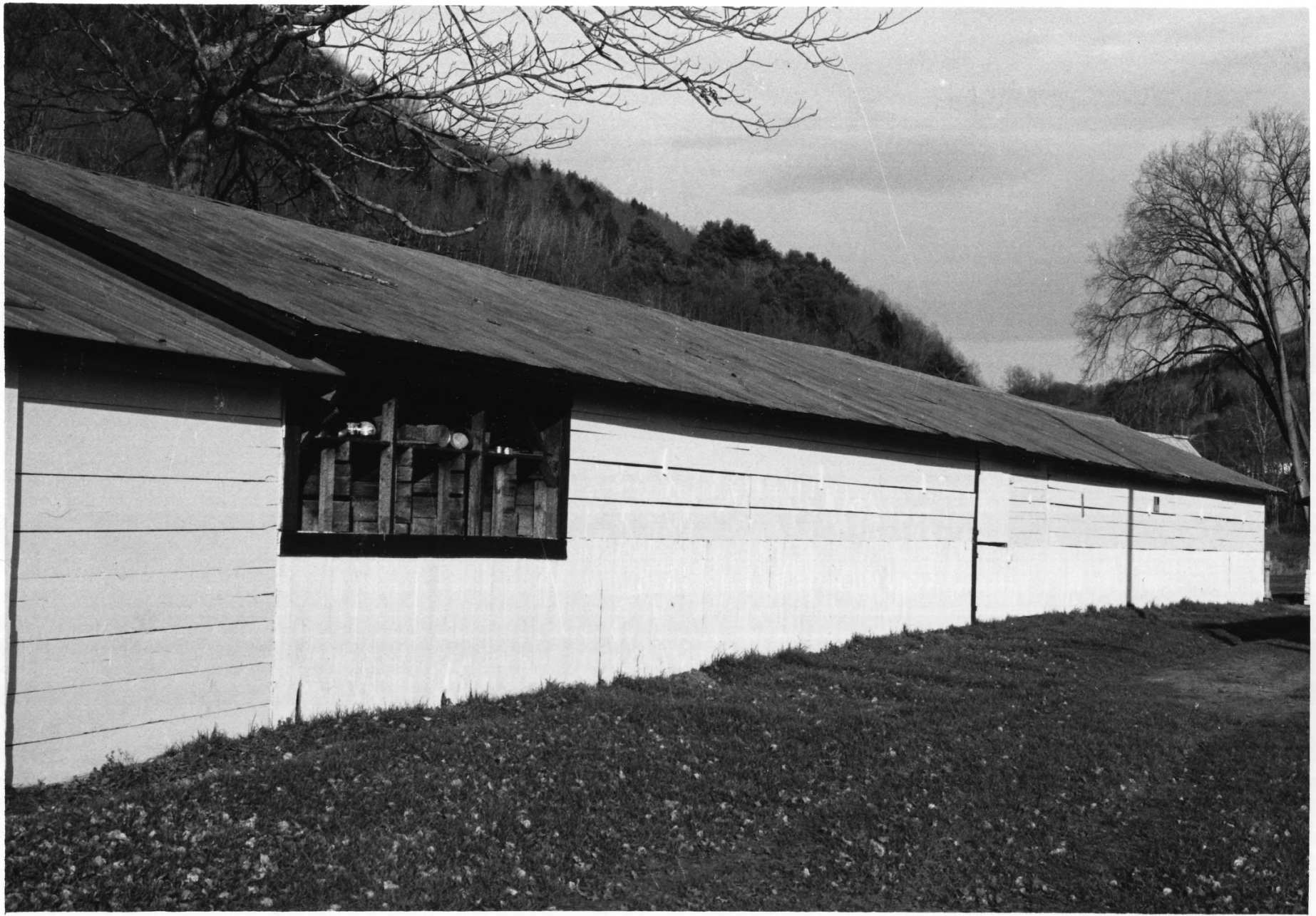
92-69-10A

#62



1. BEEF CATTLE BARN, #64
Tunbridge Village Historic District
2. ORANGE COUNTY, VT
3. JIM WICK
4. MAY 1992
5. NEGATIVE ON FILE: VT DHP
6. VIEW LOOKING SOUTHEAST
7. # 72

92-69-11A



1. SHEEP SWINE & POULTRY, #65
BARN
TUNBRIDGE VILLAGE HISTORIC DISTRICT

91-279-28A

2. ORANGE COUNTY, VT

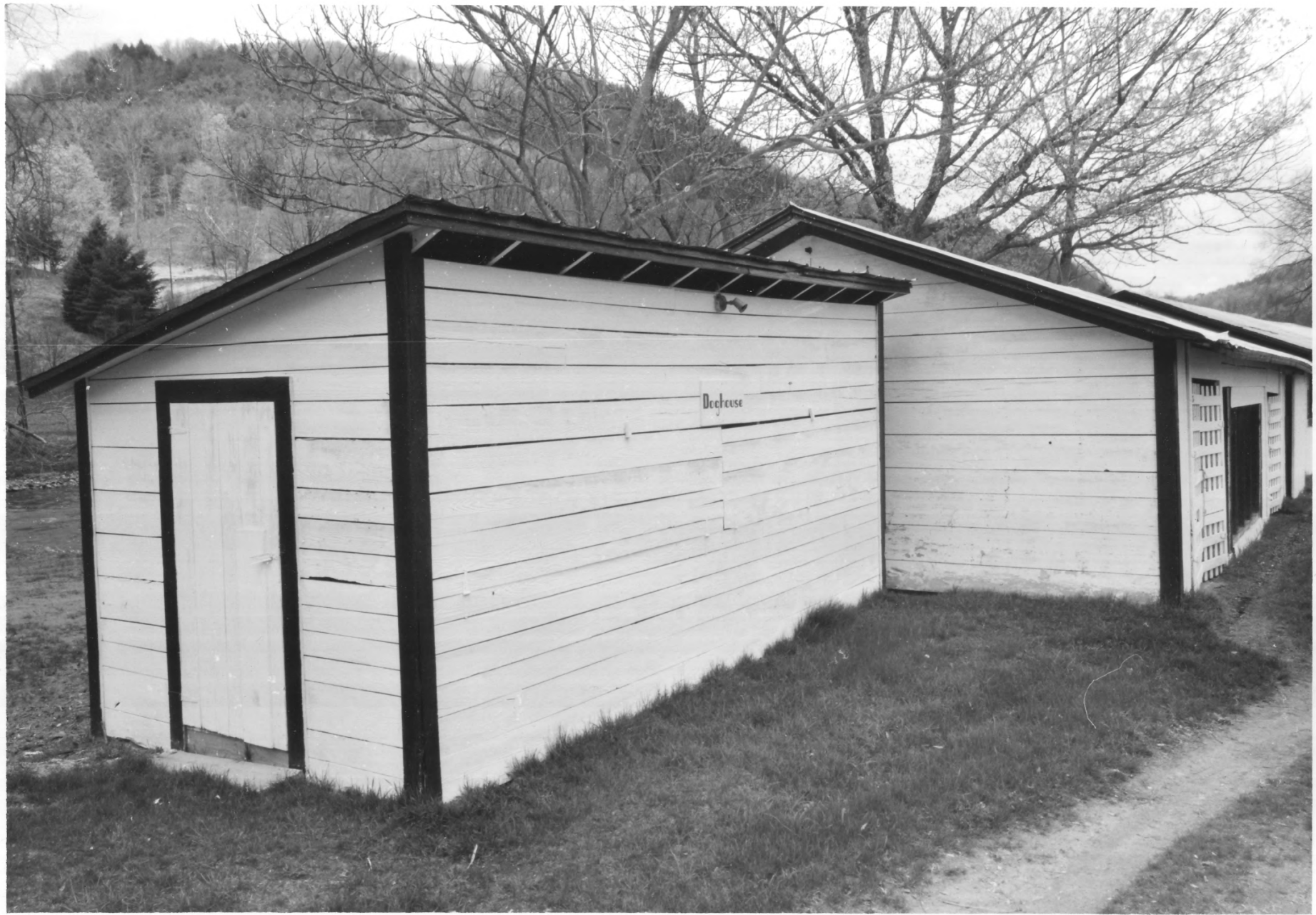
3. GARY SCHALL

4. OCTOBER 1991

5. NEGATIVE ON FILE: VT DHP

6. VIEW LOOKING NORTHEAST

7. #73



Deekuse

1. DOG HOUSE , # 66
Tunbridge Village Historic District

2. ORANGE COUNTY, VT

3. JIM WICK

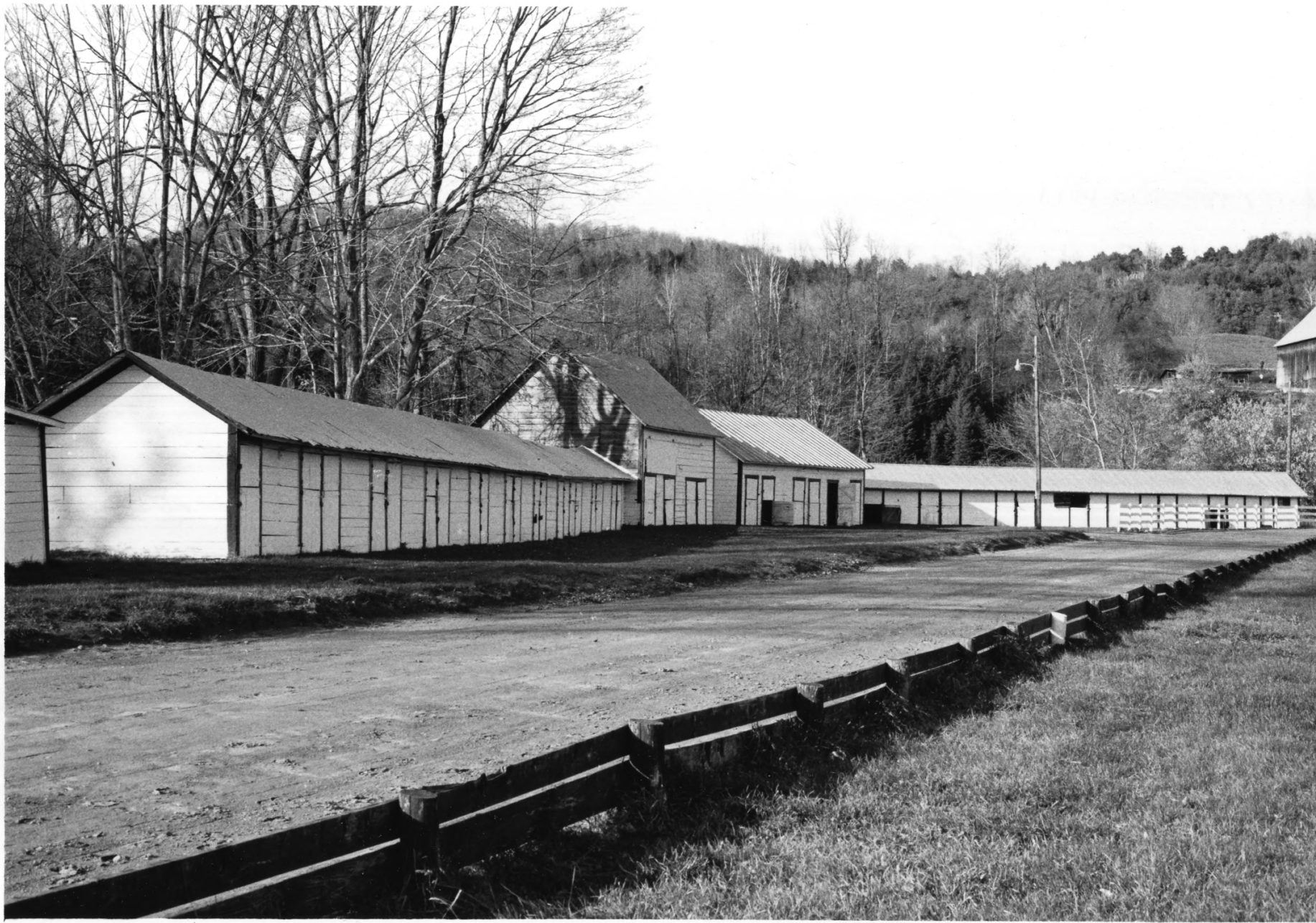
4. MAY 1992

5. NEGATIVE ON FILE: VT DHP

6. VIEW LOOKING NORTHEAST -

7. # 74

92-69-13A



1. RACE HORSE STABLES III, II, I, # 567, 68, 69
Tunbridge Village Historic District
2. ORANGE COUNTY, VT
3. GATZY SCHALL
4. OCTOBER 1991
5. NEGATIVE ON FILE: VT. DHP
6. VIEW LOOKING NORTH
7. # 75

91-279-21A



1. JAIL , # 70
Tunbridge Village Historic District
2. ORANGE COUNTY, VT
3. JIM WICK
4. MAY 1992
5. NEGATIVE ON FILE: VT DHP
6. VIEW LOOKING NORTH
7. #76

92-69-16A



1. WELL HOUSE, #71
Tunbridge Village Historic District

2. ORANGE, COUNTY, VT

3. GARY SCHALL

4. OCTOBER 1991

5. NEGATIVE ON FILE: VT DHP

6. VIEW LOOKING SOUTH

7. #77

91 -279-5A



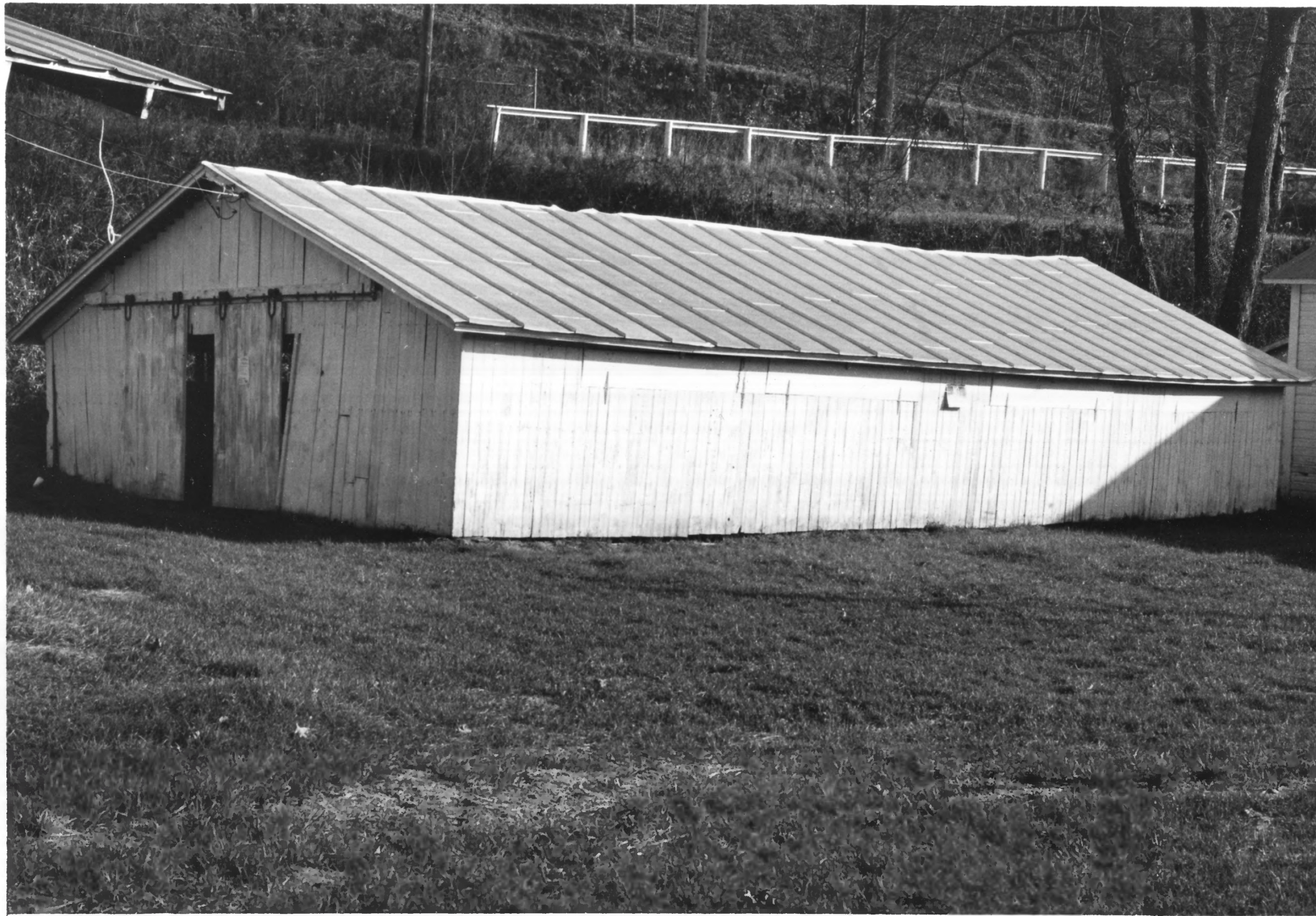
1. SHOW HORSE STABLE I , # 72
Tunbridge Village Historic District
2. ORANGE COUNTY, VT
3. GARY SCHALL
4. OCTOBER 1991
5. NEGATIVE ON FILE: VT DHP
6. VIEW LOOKING EAST
7. # 78

91-279-6A



1. SHOW HORSE STABLE II, # 74
Tunbridge Village Historic District
2. ORANGE COUNTY, VT
3. JIM WICK
4. MAY 1992
5. NEGATIVE ON FILE: VT DHP
6. VIEW LOOKING EAST
7. # 79

92-69 -20A



1. PONY BARW, # 75
Tunbridge Village Historic District
2. ORANGE, COUNTY, VT
3. GARY SCHALL
4. OCTOBER 1991
5. NEGATIVE ON FILE: VT. DHP
6. VIEW LOOKING SOUTHEAST
7. # 80

91-279-8A



92-69-22A

1. SHOW HORSE STABLE III, # 76
Tunbridge Village Historic District
2. ORANGE COUNTY, VT
3. JIM WICK
4. MAY 1992
5. NEGATIVE ON FILE: VT DHP
6. VIEW LOOKING NORTHEAST
7. # 81



1. SOUTH GATE TICKET OFFICE, #77
Tunbridge Village Historic District

2. ORANGE COUNTY, VT

3. JIM WICK

4. MAY 1992

5. NEGATIVE ON FILE: VT DHP

6. VIEW LOOKING NORTHEAST

7. #82

92-69-24A



1. SMITH-LARKIN SCHOOL , # 78
Tunbridge Village Historic District
2. ORANGE COUNTY, VT
3. GARY SCHALL
4. OCTOBER 1991
5. NEGATIVE ON FILE; VT. DHP
6. VIEW LOOKING NORTHWEST
7. # 83

91-279-10A



1. ANTIQUE HALL, # 79
Tunbridge Village Historic District

2. ORANGE COUNTY, VT

3. GARY SCHALL

4. OCTOBER, 1991

5. NEGATIVE ON FILE: VT-DHP

6. VIEW LOOKING SOUTHEAST

7. #84

91-279-13A



1. ANTIQUE HALL, # 79
Tunbridge Village Historic District

2. ORANGE COUNTY, VT

3. GARY SCHALL

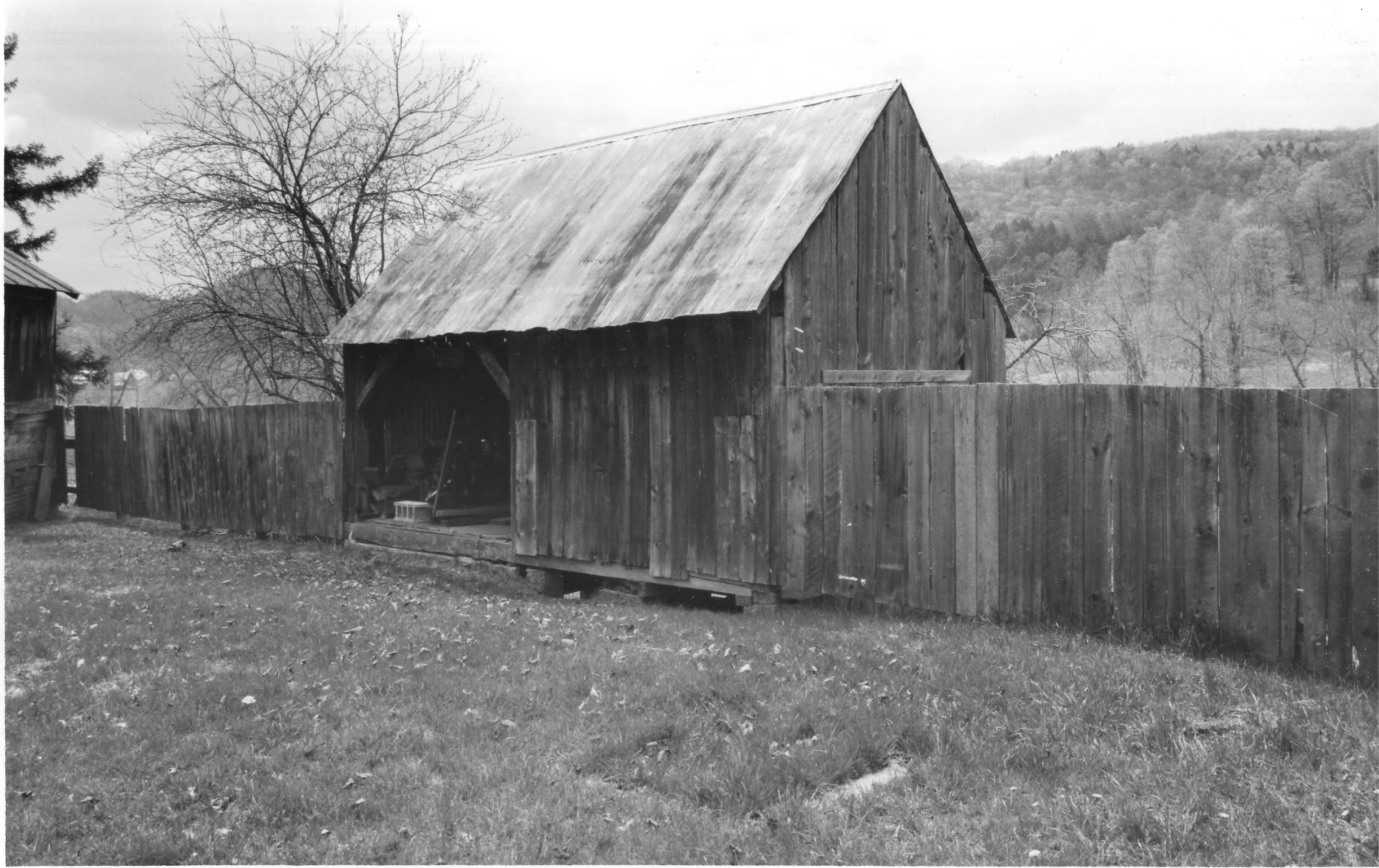
4. OCTOBER 1991

5. NEGATIVE ON FILE: VT DHP

6. VIEW LOOKING WEST.

7. # 85

91-279-11A



92-69-27A

1. SAW MILL SHED, #80
Tunbridge Village Historic District

2. ORANGE COUNTY, VT

3. JIM WICK

4. MAY 1992

5. NEGATIVE ON FILE: VT DHP

6. VIEW LOOKING WEST

7. #86



1. MACHINERY SHED, #81
Tunbridge Village Historic District

2. ORANGE COUNTY, VT

3. JIM WICK

4. MAY 1992

5. NEGATIVE ON FILE: VT DHP

6. VIEW LOOKING NORTHEAST

7. #87

92-69-25A



1. WOMEN'S LAVATORY, MEN'S LAVATORY, #84, #83, #85

SUGARHOUSE

Tunbridge Village Historic District

92-69-35A

2. ORANGE, COUNTY, VT

3. JIM WICK

4. MAY 1992

5. NEGATIVE ON FILE: VT DHP

6. VIEW LOOKING WEST

7. # 88



WORLD'S FAIR
120TH ANNIVERSARY

1. STAGE AREA , # 88
Tunbridge Village Historic District
2. ORANGE, COUNTY, VT
3. JIM WICK
4. MAY 1992
5. NEGATIVE ON FILE: VT DHP
6. VIEW LOOKING NORTHWEST
7. # 89

92-69-30A



1. GRAUDSTAUD, # 89
Tunbridge Village Historic District
2. ORANGE COUNTY, VT
3. GARY SCHALL
4. OCTOBER 1991
5. NEGATIVE ON FILE: VT TRIP
6. VIEW LOOKING NORTHEAST
7. # 90

91-279-22A



1. BROOKSIES RESTAURANT/ BINGO PARLOR, # 91
Tunbridge Village Historic District

92-69-34-A

2. ORANGE COUNTY, VT

3. JIM WICK

4. MAY 1992

5. NEGATIVE ON FILE: VT DHP

6. VIEW LOOKING SOUTHWEST

7. # 91



1. ELECTRICAL SHED, # 92

TUNBRIDGE VILLAGE HISTORIC DISTRICT 92-69

2. ORANGE COUNTY, VT

36-A

3. JIM WICK

4. MAY 1992

5. NEGATIVE ON FILE: VT DHP

6. VIEW LOOKING SOUTH

7. # 92



1. OLD TOWN SHED, #93
Tunbridge Village Historic District

2. ORANGE COUNTY, VT

3. GARY SCHALL

4. OCTOBER 1991

5. NEGATIVE ON FILE: VT DHP

6. VIEW LOOKING SOUTHEAST

7. #93

91-277-2A