

SG 3175



United States Department of the Interior  
National Park Service

# National Register of Historic Places Registration Form

This form is for use in nominating or requesting determinations for individual properties and districts. See instructions in National Register Bulletin, *How to Complete the National Register of Historic Places Registration Form*. If any item does not apply to the property being documented, enter "N/A" for "not applicable." For functions, architectural classification, materials, and areas of significance, enter only categories and subcategories from the instructions. Place additional certification comments, entries, and narrative items on continuation sheets if needed (NPS Form 10-900a).

## 1. Name of Property

historic name Campbell, Harry and Fern, House

other names/site number \_\_\_\_\_

Name of Multiple Property Listing N/A

(Enter "N/A" if property is not part of a multiple property listing)

## 2. Location

street & number 101 East 4<sup>th</sup> Street  not for publication

city or town Troy  vicinity

state Idaho code ID county Latah code 057 zip code 83871

## 3. State/Federal Agency Certification

As the designated authority under the National Historic Preservation Act, as amended,

I hereby certify that this  nomination  request for determination of eligibility meets the documentation standards for registering properties in the National Register of Historic Places and meets the procedural and professional requirements set forth in 36 CFR Part 60.

In my opinion, the property  meets  does not meet the National Register Criteria. I recommend that this property be considered significant at the following level(s) of significance:  national  statewide  local

Applicable National Register Criteria:  A  B  C  D

[Signature] 10-19-18  
Signature of certifying official/Title: Deputy State Historic Preservation Officer Date

Idaho State Historic Preservation Office  
State or Federal agency/bureau or Tribal Government

In my opinion, the property  meets  does not meet the National Register criteria.

\_\_\_\_\_  
Signature of commenting official Date

\_\_\_\_\_  
Title State or Federal agency/bureau or Tribal Government

## 4. National Park Service Certification

I hereby certify that this property is:

entered in the National Register  determined eligible for the National Register

determined not eligible for the National Register  removed from the National Register

other (explain:) \_\_\_\_\_

[Signature]  
Signature of the Keeper

12/3/2018  
Date of Action

Campbell, Harry and Fern, House  
Name of Property

Latah, Idaho  
County and State

**5. Classification**

**Ownership of Property**  
(Check as many boxes as apply.)

**Category of Property**  
(Check only **one** box.)

**Number of Resources within Property**  
(Do not include previously listed resources in the count.)

- private
- public - Local
- public - State
- public - Federal

- building(s)
- district
- site
- structure
- object

Contributing	Noncontributing	
1		buildings
		site
		structure
		object
1	0	<b>Total</b>

**Number of contributing resources previously listed in the National Register**

N/A

**6. Function or Use**

**Historic Functions**  
(Enter categories from instructions.)

DOMESTIC/single dwelling  
\_\_\_\_\_  
\_\_\_\_\_  
\_\_\_\_\_  
\_\_\_\_\_  
\_\_\_\_\_

**Current Functions**  
(Enter categories from instructions.)

DOMESTIC/single dwelling  
\_\_\_\_\_  
\_\_\_\_\_  
\_\_\_\_\_  
\_\_\_\_\_  
\_\_\_\_\_

**7. Description**

**Architectural Classification**  
(Enter categories from instructions.)

LATE 19<sup>TH</sup> AND 20<sup>TH</sup> CENTURY REVIVALS:  
Tudor Revival  
\_\_\_\_\_  
\_\_\_\_\_  
\_\_\_\_\_  
\_\_\_\_\_

**Materials**  
(Enter categories from instructions.)

foundation: Concrete  
walls: Stucco  
\_\_\_\_\_  
roof: Asphalt  
other: Brick  
\_\_\_\_\_

Campbell, Harry and Fern, House  
Name of Property

Latah, Idaho  
County and State

---

### Narrative Description

(Describe the historic and current physical appearance and condition of the property. Describe contributing and noncontributing resources if applicable. Begin with a **summary paragraph** that briefly describes the general characteristics of the property, such as its location, type, style, method of construction, setting, size, and significant features. Indicate whether the property has historic integrity).

#### Summary Paragraph

The Campbell House, located at 101 East 4<sup>th</sup> Street in Troy, Latah County, Idaho (Figures 1-5), is a one-and-one-half-story stucco-clad dwelling. Completed in 1927, the building represents a vernacular variation that is both an excellent and unique example of the Tudor Revival style.<sup>1</sup> While it clearly expresses the key character-defining Tudor Revival features – steep roof pitch with cross gable, moderate eave extension with decorative bargeboard, faux half-timbering, and a prominent brick chimney – it also incorporates hallmark elements of the contemporary Craftsman style, such as knee brackets under the eaves, exposed rafter tails, and three-over-one double-hung wood windows with vertical muntins.

The Campbell House possesses a high degree of integrity, retaining the original Tudor Revival style elements and finishes, as well as the original interior spatial arrangement. The original windows and historic entrance doors are intact, as are the associated site elements including the original concrete and stone retaining walls and integrated single-car automobile garage. The Campbell House retains integrity of its historic location, design, setting, materials, workmanship, feeling, and association. All of its significant character-defining design elements and materials are intact and it clearly conveys its original historic associations. Its Tudor Revival design and stylistic treatment successfully convey feelings of its period of construction. The only apparent nonhistoric alterations include the shed roof porch over the primary entrance, aluminum screen doors, refacing of the living room fireplace surround, and the circa 2000 replacement of the garage door(s). All easily reversible, none of these alterations obscure the overall historic character or design of the property.

---

### Narrative Description

#### LOCATION AND SETTING

The Campbell House is at the north corner of the intersection of Main and East 4<sup>th</sup> streets, immediately abutting the north edge of Troy's two-block central business district. Now, and at the time of its construction, the Campbell House was near the center of the community on its primary thoroughfare. The residential area to the north and east is characterized by early to mid-twentieth century dwellings while the small commercial nucleus of Troy is comprised of frame and masonry structures of the same era. The streets have curbs and sidewalks and the surrounding blocks retain their respective commercial or residential appearance. (Figure 4-5)

The primary elevation faces southwest onto South Main Street (State Highway 8). Main Street is the chief southeast-northwest thoroughfare through Troy. The surrounding neighborhood was platted on the

---

<sup>1</sup> Virginia Savage McAlester, *A Field Guide to American Houses* (New York, NY: Alfred A. Knopf, 2013), 449.

Campbell, Harry and Fern, House

Latah, Idaho

Name of Property

County and State

grid of streets laid out in Troy's original town plan. The Campbell House property comprises the southerly sixty-five feet of lots 21 to 24 in Block 9.

The bulk of the dwelling's irregular footprint is approximately thirty-four feet by forty-six feet, but the garage, which is internally connected to the house through the basement, extends an additional twenty-two feet to the southwest where it meets the sidewalk on South Main Street. The house generally occupies the southern half of its approximately sixty-five feet by one hundred feet parcel. With the exception of the garage wing the building has a setback measuring about twenty-five feet from Main Street and twenty feet from East 4<sup>th</sup> Street. A historic concrete sidewalk extends along both street frontages with an eight-foot-deep easement strip between it and South Main Street and a twenty-foot-deep strip between East 4<sup>th</sup> Street and the sidewalk. Twelve concrete steps ascend from the sidewalk on East 4<sup>th</sup> Street to the small front yard. At their summit, a straight concrete sidewalk leads northwest to the front porch and primary entrance, where two short flights of concrete steps (six and one steps respectively) lead up into the small front porch. Poured-in-place concrete railings with arched openings in the banisters flank the lower steps and the principle landing. Shortly before the steps to the front porch, the main entrance sidewalk is intersected by a flight of six concrete steps accessing a small stoop and side door into the sunroom.

Due to the property's relatively steep slope down to the southwest, the site features several historic stone terraces and concrete retaining walls.<sup>2</sup> A sloped concrete wall (approximately 4 feet tall at its maximum height) extends along the East 4<sup>th</sup> Street sidewalk from the bottom of the steps to the southeast corner of the lot where the top of the wall is inscribed with the words "Campbell's Corner." Turning the corner, the wall spans the full length of the South Main Street property line. At the location of the garage, the wall angles back and curves upward on both sides to meet the reinforced concrete façade of the garage as it emerges from the surrounding soil. Dry-laid rubble-stone terraces flank the concrete steps leading upward from the East 4<sup>th</sup> Street sidewalk and extend eastward along the north side of the sidewalk toward the top of the lot. Similar stone terraces define the northeastern property line at the rear of the house and connect to other terraces providing definition and variation to different lawn and landscaping sections in the side yard at the northwestern part of the property. Nonhistoric, vertical plank, wood fencing in two configurations wrap the side and rear yards extending toward South Main Street from the rear (north) of the front porch. The fence makes a series of right angle turns before following the top of the slope in a straight line from the top of the garage to the northwest corner of the property where it turns to follow the property line to the northeast corner. Brick and flagstone pavers form walkways and patios in the rear and side yards and two, small, nonhistoric frame sheds are located near the northeast corner at the rear of the house.<sup>3</sup> Grassy lawn and shrubs landscape the site with several mature trees and bushes lining the perimeter of the property.

<sup>2</sup> Local oral history indicates the stone for these retaining walls may have been salvaged when the Methodist church across East 4<sup>th</sup> Street was demolished sometime prior to 1950.

<sup>3</sup> Per the guidance titled "Rules for Counting Resources" on page 17 of National Register Bulletin 16A: *How to Complete the National Register Registration Form*, neither of these small, nonhistoric sheds warrant further documentation and are not part of the resource count.

Campbell, Harry and Fern, House  
Name of Property

Latah, Idaho  
County and State

## **EXTERIOR**

The Campbell House is a one-and-one-half-story, wood-framed home with an exterior wall treatment comprised primarily of stucco. It rests on a poured-in-place, board-formed concrete foundation. The house has a steep, simple, intersecting gable roof and an irregular footprint including a one-story, flat-roofed sunroom projecting to the southeast. The four-bedroom house includes a full basement with access to an integrated below-grade garage that opens onto South Main Street.

The primary ridgeline aligns northwest-southeast forming a side-gabled, rectangular mass. A prominent front-facing, secondary gable projects off-center from the northwest end of the front roof slope. This gable projects slightly to form a shallow ell with the main body of the structure. The steeply-pitched roof slopes have overhanging, open eaves with exposed rafter tails. Each of the three gables feature bargeboards supported by decorative, knee-brackets which pierce the otherwise unembellished bargeboards at regular intervals. The street-facing gable includes faux half-timbering spanning from the sill of the paired windows to the gable peak. All three gables have three rectangular, louvered, wood vents toward the peak of the gable wall. An interior brick chimney is on the front roof slope near the roof ridge intersection. An exterior brick chimney off-center in the southeast side elevation penetrates the front roof slope eaves.

A rectangular, one-story sunroom extends from the southeast side elevation and features a flat roof with a short parapet wall. Three square stucco-clad piers project upward from the front of the sunroom parapet and are capped with simple board trim connected by board railings surrounding the perimeter of the roof. A decorative pent roof with open eaves and exposed rafter tails skirts the upper walls of the sunroom. Throughout the house, fenestration defines asymmetrically arranged bays on the lower level with paired windows center in each of the three gables. The original three-over-one, vertical muntin, wood windows are intact, occurring both singly and in pairs, and varying in size. All window openings feature simple wood trim and a slightly projecting wood sill, as well as a nonoriginal aluminum storm window unit. Small, two- and three-pane, wood windows at grade illuminate the basement within.

### **Primary (southwest) elevation**

The first story of the primary (southwest) elevation is four bays across, defined by the central entrance, two bands of four windows flanking the main entrance, and a secondary stoop entrance to the sunroom (south end bay). The primary entrance is set within a small front porch recessed in the south corner front projecting gable wing. An arched doorway accesses the porch and a second arched opening is in the southeast side wall of the porch enclosure. The quarter-light wood-panel entrance door features three lites oriented vertically in the upper glazed portion. This entrance retains what appears to be a historic, wood-framed screen door with eight lites. A nonhistoric shed-roof porch spans the two center bays, supported by square wood posts.

The original full-light, multi-lite, wood door accessing the sunroom defines the south end bay, which steps back about six to eight feet from the main façade wall of the building. An aluminum screen door and aluminum awning at sunroom entrance are not original but appear to date to the mid-twentieth century.

Campbell, Harry and Fern, House  
Name of Property

Latah, Idaho  
County and State

The only exterior wall of the integrated, partially below-grade garage is visible on this elevation. The poured-in-place concrete structure has a parapeted façade with rounded corners above the vehicular opening. Decorative treatments found in relief around the vehicular bay include three, diamond-shaped lozenges above the single-car garage door and rectangular panels with a trefoil motif on either side of the vehicular door opening, which contains a nonhistoric yet compatible new door.

### **Side (southeast) elevation**

The southeast side elevation, facing onto East 4<sup>th</sup> Street, is three bays across, defined by a central band of windows in the projecting sunroom and small window openings in each flanking bay. A large, brick chimney dominates the west end bay and extends upward through the eaves.<sup>4</sup> The chimney features a rounded shoulder detail where the firebox transitions to the flue and at random intervals bricks project from the body of the chimney to simulate clinkers. A small, arched wood-sash window with four-pane fanlight is located immediately west of the chimney. The east end bay has a small three-over-one window. The center bay features a band of eight-lite wood casement windows that illuminate the projecting sunroom within.

### **Side (northwest) elevation**

The northwest side elevation is divided into three asymmetrical bays, defined by first-story openings. A high-set band of three, single-lite fixed wood windows is in the west end bay. A single, fixed window occupies the central bay. A kitchen entrance defines the north-east end bay. This off-center stoop entrance features the original quarter-light wood-panel (behind an aluminum screen door) and a steep-pitch gabled entrance hood. Like the primary gables of the house, it includes large bargeboard, knee brackets, and exposed rafter tails. In addition to the paired windows centered in the upper part of the gable wall, a small three-over-one window is located off to the right under the eave.

### **Rear (northeast) elevation**

The northeast rear elevation is five bays across, defined by single, wood-sash windows of varying sizes. These include a single-light fixed unit, three three-over-one units, and a paired eight-lite casement window unit at the south end in the sunroom's side wall. The side wall is stepped back about six to eight feet from the rear wall of the main dwelling.

## **INTERIOR**

### **First Floor**

The Campbell House encompasses two floors and a basement that extends toward Main Street to incorporate an integrated below-grade single-car garage. While the basement walls are poured-in-place concrete, a framework of milled lumber forms the interior walls and floors of the two upper floors. The interior spatial arrangement retains the original late 1920s design. The original wood floors, stained and painted wood trim, and doors with their historic hardware are all intact. One of two original fireplaces and

<sup>4</sup> Conflicting evidence suggests that this chimney may have been constructed in the decades after the home's construction but under the direction of Harry Campbell.

Campbell, Harry and Fern, House

Latah, Idaho

Name of Property

County and State

several historic built-ins in the dining room, hallways, bedrooms, and bathrooms remain substantially unchanged. Wall and ceiling finishes are largely unaltered and some spaces (such as in the upstairs hall) feature high chair rails above a scored and stippled plaster treatment designed to simulate stone. Although carpeted, the staircase to the second floor retains its original railing, and newel post and balusters that incorporate a stained shield-shaped medallion.

The interior spatial arrangement at the front (southwest portion) of the first floor includes a large living area anchored by a fireplace at the southeast end. The fireplace has been altered with the addition of modern tile over its original brick. An arched opening accesses the large dining room in the west corner of the first floor. A large built-in buffet occupies the northwest wall below a bank of windows and boasts a central, mirror-backed counter flanked by large, glass-doored cabinets featuring a pointed arch motif. Doors and drawers below the counter repeat the stained shield motif found on the stair.

Southeast of the living room, a fifteen-lite glass door opens into the sunroom. A rough-cut stone fireplace occupies the west corner of the sunroom and shares a flue with the fireplace in the adjoining living area. While the body of the stone around the fireplace has been painted, unpainted, rough-cut small stones of a variety of natural colors extend upward to form the border of a frescoed woodland scene painted directly on the wall. The same stone is manipulated into projecting candle sconces on either side of the painting.<sup>5</sup> Another scene painted directly onto the northwest sunroom wall is framed simply with woodwork affixed onto the wall. (See Figures 22-24 and Photo 11.)

Behind the living room, toward the rear (northeast) of the first floor, a long narrow hallway includes the main staircase and connects the sunroom to the kitchen at the northeast corner of the house. Closets, a bedroom, and a large, full bathroom (all with extensive built-ins) occupy the spaces along the northeast side of this hallway. The kitchen flooring and cabinetry reflect a mid-century remodel. The historic kitchen floorplan includes a breakfast nook, and indicates it was the hub of the house with doorways leading to a pantry and the basement stairs, as well as the hallway, dining room, and back door.

## Second Floor

Atop the straight stair, the second-floor hall makes an ell around the staircase to access three bedrooms and a powder room. Each bedroom takes advantage of the space and illumination provided by one of the three exterior gables and their paired windows. The wood floors of the hallway and bedrooms have been carpeted.

<sup>5</sup> Conflicting evidence suggests that this fireplace may have been constructed in the decades after the home's construction but under the direction of Harry Campbell. The integrated artwork was certainly the creative product of Campbell.

Campbell, Harry and Fern, House

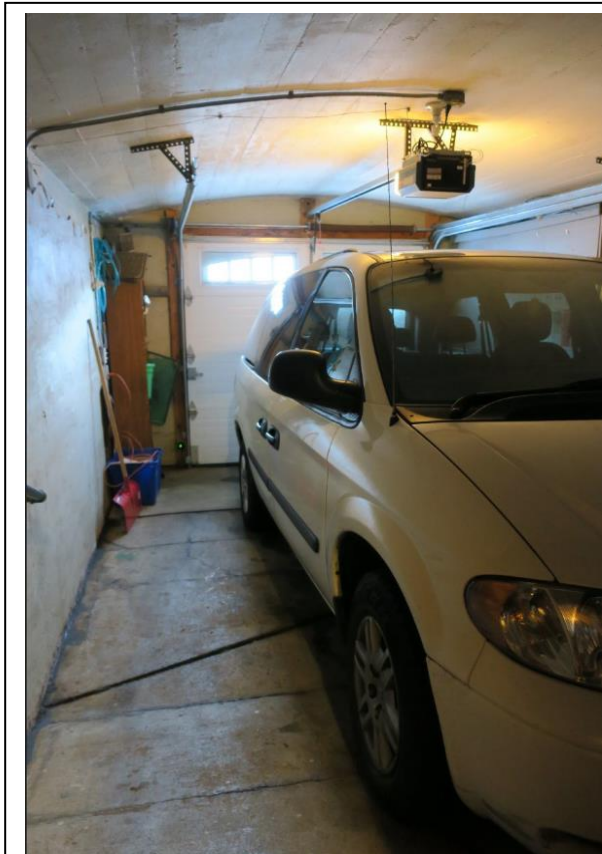
Name of Property

Latah, Idaho

County and State

### Basement

A staircase leads from the kitchen to the full basement, which has been partially finished into living space in recent years. In the northwest corner of the basement, via a workshop space, a historic half-light wood paneled door accesses the single-car garage. The poured-in-place garage features a gently sloped floor, smooth side walls, and a shallow barrel-shaped ceiling with visible shadows of the board forms.



Campbell House, Original below-grade garage

### INTEGRITY DISCUSSION

The Campbell House retains a high degree of all seven aspects of integrity. The integrity of location and setting are intact, reflected by the dwelling's occupation of its original site at the center of the original townsite of Troy. Its historic identity is clearly conveyed through its retention of original character-defining features, including its size, scale, and massing, as well as its original design, materials, and workmanship. It is an excellent example of an early twentieth century house executed in the Tudor Revival style and retains all the original design features including windows, entrances, and decorative treatments, as well as the interior spatial arrangement, functional spaces, and finishes. Alterations known to have taken place during Harry's occupancy include introduction of a metal awning over the sunroom entry and remodeling of secondary kitchen and bathroom spaces. The only apparent nonhistoric alterations, after Campbell's death, include the late twentieth century installation of a shed-roofed porch over the front steps, the 2008 tiling of the living room fireplace, and the recent replacement of the garage door. Most of these alterations occurred in secondary areas and do not obscure the overall character or design of the building. By virtue of its high degree of retention of all other aspects of integrity, the Campbell House continues to clearly convey its historic feelings and associations with the residential and architectural development during the early twentieth century in Troy, Idaho.



Campbell, Harry and Fern, House  
Name of Property

Latah, Idaho  
County and State

**8. Statement of Significance**

**Applicable National Register Criteria**

(Mark "x" in one or more boxes for the criteria qualifying the property for National Register listing.)

- A Property is associated with events that have made a significant contribution to the broad patterns of our history.
- B Property is associated with the lives of persons significant in our past.
- C Property embodies the distinctive characteristics of a type, period, or method of construction or represents the work of a master, or possesses high artistic values, or represents a significant and distinguishable entity whose components lack individual distinction.
- D Property has yielded, or is likely to yield, information important in prehistory or history.

**Criteria Considerations**

(Mark "x" in all the boxes that apply.)

Property is:

- A Owned by a religious institution or used for religious purposes.
- B removed from its original location.
- C a birthplace or grave.
- D a cemetery.
- E a reconstructed building, object, or structure.
- F a commemorative property.
- G less than 50 years old or achieving significance within the past 50 years.

**Areas of Significance**

(Enter categories from instructions.)

ARCHITECTURE  
\_\_\_\_\_  
\_\_\_\_\_  
\_\_\_\_\_  
\_\_\_\_\_

**Period of Significance**

1927  
\_\_\_\_\_  
\_\_\_\_\_

**Significant Dates**

N/A  
\_\_\_\_\_  
\_\_\_\_\_

**Significant Person**

(Complete only if Criterion B is marked above.)

N/A  
\_\_\_\_\_

**Cultural Affiliation** (if applicable)

N/A  
\_\_\_\_\_  
\_\_\_\_\_

**Architect/Builder**

Campbell, Harry  
\_\_\_\_\_  
\_\_\_\_\_

**Period of Significance (justification)**

The period of significance begins and ends in 1927, the year the building was placed in service.

**Criteria Considerations (explanation, if necessary)**

N/A

Campbell, Harry and Fern, House  
Name of Property

Latah, Idaho  
County and State

---

**Statement of Significance Summary Paragraph** (Provide a summary paragraph that includes level of significance, applicable criteria, justification for the period of significance, and any applicable criteria considerations).

The Campbell House, located at 101 East 4<sup>th</sup> Street in Troy, Latah County, Idaho, is individually eligible for listing in the National Register of Historic Places under Criterion C in the area of ARCHITECTURE. Completed in 1927, from a design by the original owner, builder Henry (Harry) Campbell, the dwelling is representative of the architectural development and residential evolution of Troy.

The Campbell House is locally significant in the area of ARCHITECTURE for its clearly conveyed associations with Troy's architectural growth. The dwelling reflects the burgeoning popularity of the Tudor Revival style at the time of its construction. Furthermore, it represents the work of a skilled builder, Harry Campbell, who adeptly modified the 'standard' Tudor Revival house by incorporating key features of the contemporary Craftsman style. As such, the house embodies distinctive characteristics of the single-family dwelling property type, its late 1920s period of construction, patterns and elements common to its style, as well as the individuality and variation of features that occurred within the Tudor Revival architectural stylistic classification. The period of significance for the Campbell House begins and ends in 1927, at the time of its completion.

---

**Narrative Statement of Significance** (Provide at least **one** paragraph for each area of significance.)

### **Criterion C: Architecture**

Designed in the Tudor Revival style, by its original owner, local builder and craftsman, Harry Campbell, the Campbell House is significant under Criterion C for its embodiment of distinctive characteristics of a type and period of construction, as well as for its design by a skilled builder. By virtue of its style and integrity, it possesses high architectural value. The Campbell House is a carefully crafted, stucco-clad house featuring a steeply pitched intersecting gable roof with moderate eaves, prominent bargeboards, faux half-timbering, and a prominent brick chimney, all of which are character-defining features of the Tudor Revival style. Additionally, Campbell skillfully incorporated character-defining elements of the Craftsman style, such as knee brackets under the eaves, exposed rafter tails, and multi-light vertical muntin double-hung wood windows.

### **Tudor Revival Style**

The Tudor Revival style is part of the Eclectic Movement (1880-1940), which drew inspiration from the full spectrum of architectural tradition including Ancient Classical, Renaissance Classical, Medieval, and Modern.<sup>6</sup> Between the 1890s and the 1930s, homebuilders simultaneously erected residences in such diverse styles as Colonial Revival, Neoclassical, Prairie School, Tudor Revival, Mission, and Craftsman. Houses erected during this period fell into two categories: historical "period" styles and "modern" styles that shunned earlier architectural precedents. The Chicago Columbian Exposition of 1893 epitomized correct historical interpretations of classical European styles, adding to the popularity of reproducing historical models. Concurrently and in contrast to the European and Colonial American-inspired styles, Modern houses emerged. This stylistic subcategory represents the escalating impact of Frank Lloyd Wright's Prairie School, European Modernism, and the Arts and Crafts Movement on middle-class housing in the early twentieth century.

---

<sup>6</sup> McAlester, 406.

Campbell, Harry and Fern, House  
Name of Property

Latah, Idaho  
County and State

Tudor Revival style houses enjoyed popularity nationwide from about 1890 through 1940, inspired by and “loosely based on a variety of early English building traditions, ranging from simple folk cottages to early Renaissance palaces.”<sup>7</sup> British architects of the mid-1850s began to draw upon these archetypical examples of native construction from late Medieval and early Renaissance Britain to influence a revival of English craftsmanship and design. Architectural magazines and builder pattern books in Britain and the United States popularized the style and the easily adaptable multi-faceted Tudor Revival house became extensively popular as one of the most fashionable domestic architectural types in the country. Character-defining features include steeply pitched roofs with prominent front-facing gables; tall, narrow windows, usually in multiple groups; massive chimneys; front door and/or entry porch with round or Tudor arch; and approximately one-third employ decorative half-timbering.<sup>8</sup> The Campbell House incorporates each of these elements and is representative of the Tudor Revival style and eclectic architecture, in general, that was popular during the early twentieth century.

Of the approximately four hundred dwellings in Troy, most houses in the historic core of town reflect late nineteenth and turn-of-the-twentieth century styles and folk house forms. Though examples of the contemporary Craftsman style can be found and examples of the slightly later Minimal Traditional style are present, no other examples of Tudor Revival are known to exist.<sup>9</sup>

Interestingly, Harry Campbell adeptly incorporated key elements from the contemporarily popular Craftsman style, which persisted nationwide for a quarter century, from around 1905 through 1930. Inspired by the early designs of Charles Sumner Greene and Henry Mather Greene who practiced architecture in California from 1893 to 1914, the style appropriated elements from the English Arts and Crafts movement and Central Asian architecture. Character-defining features include shallow-pitched roofs with a wide eaves overhang; construction materials as ornament, such as exposed roof rafter tails, beams and braces under the eaves; full- or partial-width porches that blur the lines between outdoors and indoors; heavy, often tapered, square porch support columns; and the common use of stone and other rustic materials that create an aesthetic connection to nature.<sup>10</sup> Clearly reflecting the eclectic nature of residential architecture of the period, as well as the builder’s skill, the Tudor Revival style Campbell House also features several of these Craftsman elements.

## Historical Overview

The Campbell House stands on a parcel comprised of the southwesterly 65 feet of lots 21 to 24 in Block 9 of the original town plat of Troy. At the time of its completion in 1927, the house stood at the center of the community on its primary thoroughfare.

The small town of Troy in southwest Latah County is located approximately twelve miles east of Moscow, the county’s largest city and its seat of government. Situated in a valley known as Huff’s Gulch, the town is bordered to the south and west by the rolling farmland of the Palouse and to the north and east by forested hills. Beginning in 1890, planning and construction of the Northern Pacific Railroad assured the town’s

<sup>7</sup> Ibid., 450.

<sup>8</sup> Ibid., 448-466.

<sup>9</sup> This information is based on investigation by local resident and historian, Karen Purtee, and was substantiated by visual analysis using Google Street View image captures from 2007-2009. A street-by-street windshield survey of Troy to verify the presence or absence of the Tudor Revival style or other contemporary styles was outside the scope and budget of this CLG grant project.

<sup>10</sup> Ibid., 566-578.

Campbell, Harry and Fern, House  
Name of Property

Latah, Idaho  
County and State

establishment and it was incorporated as Vollmer in 1892 before being renamed Troy in 1897.<sup>11</sup> In addition to the railroad, timber played a major role in the town's early economy. The Troy Lumber and Manufacturing Company was founded north of the small business district in 1904. At the height of its success (circa 1920) the company operated several mills, produced finished building materials, and developed Troy's first electrical system.<sup>12</sup> The community flourished in the decades prior to World War II, and much of Troy's two-block commercial core dates to this era.

Harry Campbell purchased the southwesterly 65 feet of lots 19 to 24 in Block 9 from the Troy Lumber Company on September 17, 1927, for "one dollar and other valuable considerations."<sup>13</sup> Campbell, an experienced farmer and craftsman, designed and constructed the house himself. The previously undeveloped site was on a steep grade, and a spring near the top left the soil wet, so Campbell used his farm horses to level the lot. Family history notes that Harry used the vacant Methodist church across East 4th Street as a workshop where he built cabinets for the house during the winter of 1926-1927. Construction of the building was swift, beginning shortly after property acquisition in September 1927. The dwelling was of sufficient completion that the family moved into the house that November.<sup>14</sup> The house was valued at \$10,000 in 1930.<sup>15</sup>

Harry and Fern raised six children in the house – Maxine (born 1921), LoRayne (born 1923), Warren (born 1925), JoAnn (born 1927), Howard (born 1929), and Bryce (born 1932).<sup>16</sup> Following Harry's death in 1978, Fern remained in the house until her own death in 1995.<sup>17</sup>

Fern's estate sold the property to Todd and Laura Benson in 1998. The Benson's in turn sold the house to Kimberly Wilson and Stephan Yauchzee in 2005. The Yauchzees sold the house to present owners, Kristen Raasch and Emily Raasch, in 2011.<sup>18</sup>

### **Builder – Henry Harrison “Harry” Campbell**

Henry Harrison “Harry” Campbell (1889-1978) was a native of Latah County, Idaho, and the son of immigrants from Missouri (mother) and Tennessee (father).<sup>19</sup> Born in Moscow, Harry Campbell and his family moved to the Troy area shortly after his birth and, with occasional exceptions, he remained there until his death.<sup>20</sup>

---

<sup>11</sup> Suzanne Julin, “Troy Downtown Historic District,” National Register of Historic Places Registration Form (Missoula, Montana: Suzanne Julin, Public Historian, 2009), 13-15.

<sup>12</sup> Suzanne Julin, “Bohman, Ole, House,” National Register of Historic Places Registration Form (Missoula, Montana: Suzanne Julin, Public Historian, 2011), 6-7.

<sup>13</sup> Lots 19 and 20 of Block 9 remained in the Campbell family's possession until Fern's death in 1995. These two lots were legally separated from the Campbell House property by owners Todd and Laura Benson in 2003.

<sup>14</sup> Karen Purtee, Interview with Howard Campbell, 2017.

<sup>15</sup> U.S Bureau of the Census, *United States Federal Census, Idaho, Latah County*. 1930. Database online. <http://www.ancestry.com/search/rectype/census/usfedcen/default.aspx> (accessed January 13, 2018).

<sup>16</sup> “Fern Campbell,” Oral History Project Personal Data Record. Oral History Collection, Latah County Historical Society, no date.

<sup>17</sup> Stella E. Johnson, *History of Troy* (Troy, ID: North Country Book Express Inc., 1992), 159.

<sup>18</sup> Latah County Assessor Records, Deed Indexes.

<sup>19</sup> “Harry Campbell,” Oral History Project Personal Data Record. Oral History Collection, Latah County Historical Society, no date.; and <https://www.findagrave.com/memorial/13118639>, accessed January 13, 2018. Though the FindAGrave.com entry lists his middle name as Harold, primary resources (e.g. birth records, WWI and WWII draft registrations) list his middle name as Harrison. To further confuse matters, an article in the *Idahonian* (Moscow, ID) dated February 22, 1971, states Campbell “admits his first name is Harrison, but refuses to divulge what the second “H” stands for. “They got it all mixed up in the Army...and I’ve never used it.” Family members, business advertisements, and Troy residents routinely referred to Campbell as Harry or H.H.

<sup>20</sup> Loris Jones, “Troy Artist Finds Painting Hobby Both Fascinating and Profitable,” *Idahonian* (Moscow, ID), February 22, 1971, 12.

Campbell, Harry and Fern, House  
Name of Property

Latah, Idaho  
County and State

Harry's parents, Thomas Archibald and Martha Wright Campbell, married around 1876. Of eight children, five lived to adulthood, and son Harry was the fourth of these to be born.<sup>21</sup> By the time of Harry's birth in 1889, the Campbells were living in Latah County where the United States government had granted Thomas title to 160 acres in the vicinity of Little Bear Ridge (approximately 4.5 southeast of Troy).<sup>22</sup>

Having graduated from Troy High School, Harry studied briefly at Blair Business College and the University of Idaho without earning a degree.<sup>23</sup> He found work as a machinist at a factory in Moscow that produced combine harvesters and was later employed as a machinist and handyman by the Oregon Short Line Railroad at Pocatello, Idaho, in June of 1917 when he registered to be drafted for World War I.<sup>24</sup> After service in France as a supply wagon driver, Campbell returned to Latah County where he married Fern Arnot, the daughter of a neighboring Little Bear Ridge farmer in October 1919.<sup>25</sup>

For approximately eight years, Harry and Fern farmed on Little Bear Ridge. Four children were born during this time, with JoAnn's birth coinciding with the sale of their farm in November of 1927.<sup>26</sup> With the sale of their farm, the Campbells relocated to Troy where Harry had just completed construction of their house at the north corner of South Main and East 4<sup>th</sup> streets. Two more children were born to the Campbells after their move to Troy.

The construction of his own home in Troy initiated Harry's career as a carpenter and builder. Over the course of three decades, Campbell generally worked out of his home.<sup>27</sup> He did, however, occasionally work from nearby shops where he produced cabinets and operated his business. While building his own home in 1927, Campbell used the vacant Methodist church across the street as a base of operations, and in 1938, he shared space with electrician Eldon Strom at 339 South Main Street.<sup>28</sup>

Although he was known to advertise his services, Campbell's customers were largely drawn from local businesses and residents who knew of his work by word of mouth. An advertisement, which likely dates to the early 1930s, describes him as a "Builder and Decorator" who specialized in "interiors and exteriors which make your house a home (see figures below for copies of advertisements)."<sup>29</sup> By 1938, another ad lists him as a general contractor and noted that his services included painting, wallpapering, and "cabinet work."<sup>30</sup> Only five years before his retirement in 1959, an advertisement placed in the local newspaper referred to his business

<sup>21</sup> U.S. Bureau of the Census. *United States Federal Census, Idaho, Latah County*. 1900, 1910. Database online. <http://www.ancestry.com/search/rectype/census/usfedcen/default.aspx> (accessed January 13, 2018).

<sup>22</sup> Government Land Office, Land Patent Certificate Number 1406, February 23, 1889. Available from <https://glorerecords.blm.gov/default.aspx>.

<sup>23</sup> "Harry Campbell," Latah County Historical Society, no date.

<sup>24</sup> "Henry Harrison Campbell," World War I Draft Registration Card, June 5, 1917. Available from [www.ancestry.com](http://www.ancestry.com).

<sup>25</sup> "Fern Campbell," Latah County Historical Society. Fern Lloyd Arnot (born November 7, 1900 to Arthur and Netti Arnot) was eleven years younger than Harry. He turned thirty and she turned nineteen less than a month after their marriage.

<sup>26</sup> "Fern Campbell," Latah County Historical Society. In a February 22, 1971, article in the *Moscow Idahonian*, Campbell confided that he left farming after it became obvious he would need to "either sell my horses, get more land and power machinery, or quit."

<sup>27</sup> H.H. Campbell, Advertisement. "Interiors and Exteriors Which Make Your House a Home," Circa 1930. Private collection of Kristen Raasch. One early advertisement of his services notes that "if a trip to my home is not convenient, phone 42W and I will be pleased to call and give you any desired information along the lines of real economy."

<sup>28</sup> Karen Purtee, Interview with Howard Campbell, 2017.; and Suzanne Julin, "Troy Downtown Historic District," National Register of Historic Places Registration Form (Missoula, Montana: Suzanne Julin, Public Historian, 2009), 5.

<sup>29</sup> H.H. Campbell, Advertisement. "Interiors and Exteriors Which Make Your House a Home." Circa 1930. Private collection of Kristen Raasch.

<sup>30</sup> H.H. Campbell, Advertisement. *Swedish-American Housewives' Tested Recipes*, (Troy, ID: Dry Creek Welfare Club and Nora Social Club, 1938).

Campbell, Harry and Fern, House  
Name of Property

Latah, Idaho  
County and State

as the “Troy Cabinet Shop” and lists his expertise with multiple materials and products that would “specialize better kitchens for better living.”<sup>31</sup> Campbell was known to work with other local craftsmen. His son remembers that he routinely supplied cabinets to homes built by local carpenter Edward Carlson and collaborated with a local mason when projects required brickwork.<sup>32</sup>

While Harry’s work as a builder was generally confined to remodeling projects, he occasionally took on larger jobs. He remodeled the Troy Medical Clinic and built an addition to the Bank of Troy in the 1950s.<sup>33</sup> In addition to his own home, Campbell was reputed to have built a home in 1936 for Henry C. Hansen at 815 East 6<sup>th</sup> Street in Moscow (See Figure 21).<sup>34</sup> It is likely that he also built (or had constructed) the house next door to the northwest of his own home at 314 South Main Street in 1971.<sup>35</sup>

Except for time spent working at the Seattle shipyards in the early 1940s during World War II, Harry Campbell worked as builder until retirement in 1959.<sup>36</sup> It was then that he began a locally successful career as a landscape painter.<sup>37</sup> Harry first exhibited artistic talent when inscribing large brass bombshells with a penknife while serving in France during World War I, and he later experimented with marquetry.<sup>38</sup> His love of painting began in his own home when he mixed left-over house paints with plaster to create a fresco above one of the fireplaces. Untrained as an artist, Campbell used materials at-hand including Masonite and extra house paint to create murals and paintings (See Figures 15, 16, 22-28). His work received local attention and he exhibited his art around the region.<sup>39</sup>

In addition to his work as a builder and his artistic hobbies, Harry was active in the community as a member of the Veterans of Foreign Wars and he served several years on the Troy School Board. Fern worked as a cook in the Troy schools and as a professional seamstress out of the home.<sup>40</sup> The couple remained in the Campbell House until their respective deaths in 1978 and 1995.

### Summary Statement of Significance

The Campbell House is an excellent local example of the Tudor Revival style. It has direct associations with the evolution of residential development in Troy during the early twentieth century. By virtue of its architectural integrity and as an owner-designed single-family dwelling, it is an excellent example of its property type executed in the Tudor Revival style. It meets the requirements and integrity thresholds for listing in the National Register of Historic Places and clearly conveys both its historical and architectural associations.

<sup>31</sup> H.H. Campbell, Advertisement. “Beautify Your Home.” *The Latah County Press* (Troy, ID), February 25, 1954. Campbell was often frugal with materials, and it was not unusual for him to recycle appliance crates and other odds and ends into his projects. An example may be found in the built-in drawers in at least one upstairs bedroom of the Campbell House.

<sup>32</sup> Karen Purtee, “Interview with Howard Campbell,” 2017. Howard Campbell noted that this mason, Reem, completed the brickwork on the Campbell House as well as at the Troy Medical Clinic and the Bank of Troy.

<sup>33</sup> Johnson, 159.

<sup>34</sup> Jones, 12. Hansen, a native of Denmark, was a dairy professor at the University of Idaho who served as a school board member, postmaster, and mayor of Moscow.

<sup>35</sup> Harry Campbell purchased Lots 19 and 20 of Block 9 from the Troy Lumber Company in 1927. These lots remained under the same ownership as the Campbell House until 2003.

<sup>36</sup> Johnson, 159.

<sup>37</sup> Jones, 12.

<sup>38</sup> “Harry Campbell,” Oral History Project Personal Data Record.

<sup>39</sup> Jones, 12. In approximately 1960, Campbell invited the public to view his paintings in the subterranean garage of his house on South Main Street. He described the exhibit as “a one man show in a one horse town.”

<sup>40</sup> “Fern A. Campbell, 94, longtime of Troy, Idaho,” [http://tribune.com/obituaries/fern-a-campbell-longtime-of-troy-idaho/article\\_4fdf9579-7e13-5c86-abd5-302016e4a2b4.html](http://tribune.com/obituaries/fern-a-campbell-longtime-of-troy-idaho/article_4fdf9579-7e13-5c86-abd5-302016e4a2b4.html). Accessed January 13, 2018.; and Johnson, 159.

Campbell, Harry and Fern, House  
Name of Property

Latah, Idaho  
County and State

**9. Major Bibliographical References**

**Bibliography** (Cite the books, articles, and other sources used in preparing this form.)

Campbell, H.H. Advertisement. "Beautify Your Home." *The Latah County Press* (Troy, ID), February 25, 1954.

Campbell, H.H. Advertisement. "Interiors and Exteriors Which Make Your House a Home." Circa 1930. Private collection of Kristen Raasch.

Campbell, H.H. Advertisement. *Swedish-American Housewives' Tested Recipes*. Troy, ID: Dry Creek Welfare Club and Nora Social Club, 1938.

"*Fern Campbell*." Oral History Project Personal Data Record, Oral History Collection, Latah County Historical Society, Undated.

Hansen, Henry. Latah County Military Scrapbooks, Latah County Historical Society, Moscow, Idaho.

"*Harry Campbell*." Oral History Project Personal Data Record, Oral History Collection, Latah County Historical Society, Undated.

Johnson, Stella E. *History of Troy*. Troy, ID: North Country Book Express Inc., 1992.

Jones, Loris. "Troy Artist Finds Painting Hobby Both Fascinating and Profitable." *Idahonian* (Moscow, ID), February 22, 1971.

Julin, Suzanne. "Bohman, Ole, House." National Register of Historic Places Registration Form. Missoula, Montana: Suzanne Julin, Public Historian, 2011.

Julin, Suzanne. "Troy Downtown Historic District." National Register of Historic Places Registration Form. Missoula, Montana: Suzanne Julin, Public Historian, 2009.

Latah County, Idaho, Idaho Residential Property Record, Property Parcel# RPM08600010060A; Latah County Assessor's Office, Moscow, Idaho.

McAlester, Virginia Savage. *A Field Guide to American Houses*. New York, NY: Alfred A. Knopf, 2013.

"One Horse Town Big Enough for Painter Harry Campbell." Newspaper clipping, Circa 1960. Troy Historical Society Archival Collection.

Purtee, Karen. Interview with Howard Campbell," 2017.

*Sanborn Fire Insurance Map of Troy, Idaho*. New York: Sanborn Map Company, 1929. Database online. <https://www.boisepubliclibrary.org/research-learning/?category=History> (accessed April 20, 2018).

U.S Bureau of the Census. United States Federal Census, Idaho, Latah County. 1900, 1910, 1920, 1930, 1940. Database online. <http://www.ancestry.com/search/rectype/census/usfedcen/default.aspx> (accessed January 13, 2018).

**Previous documentation on file (NPS):**

preliminary determination of individual listing (36 CFR 67 has been requested)

previously listed in the National Register

previously determined eligible by the National Register

designated a National Historic Landmark

recorded by Historic American Buildings Survey # \_\_\_\_\_

recorded by Historic American Engineering Record # \_\_\_\_\_

recorded by Historic American Landscape Survey # \_\_\_\_\_

**Primary location of additional data:**

State Historic Preservation Office

Other State agency

Federal agency

Local government

University

Other

Name of repository: Latah County Historical Society; Troy Historical Society

Historic Resources Survey Number (if assigned):

Campbell, Harry and Fern, House  
Name of Property

Latah, Idaho  
County and State

**10. Geographical Data**

**Acreage of Property** 0.16 acres

(Do not include previously listed resource acreage; enter "Less than one" if the acreage is .99 or less)

**Latitude/Longitude Coordinates**

Datum if other than WGS84: \_\_\_\_\_  
(enter coordinates to 6 decimal places)

1	<u>46.736120</u>	<u>-116.768368</u>	3	_____	_____
	Latitude	Longitude		Latitude	Longitude
2	_____	_____	4	_____	_____
	Latitude	Longitude		Latitude	Longitude

**Verbal Boundary Description** (Describe the boundaries of the property.)

The boundary of the Campbell House property is shown as the bold dotted line on the accompanying map entitled "Figure 7: Site Plan." Original Town, Block 9, the southerly 65 feet of lots 21 to 24. Parcel Number RPT1540009021A.

**Boundary Justification** (Explain why the boundaries were selected.)

The nomination includes the parcel of land that is historically associated with the resource.

**11. Form Prepared By**

name/title Kerry Davis, Architectural Historian; and Dan Everhart, Architectural Historian date July 2018  
organization Preservation Solutions, LLC telephone 816-225-5605  
street & number 1007 East Jefferson Street email kdavis@preservation-solutions.net  
city or town Boise state ID zip code 83712

**Additional Documentation**

Submit the following items with the completed form:

- **Regional Location Map**
- **Local Location Map**
- **Tax Lot Map**
- **Site Plan**
- **Floor Plans (As Applicable)**
- **Photo Location Map** (Include for historic districts and properties having large acreage or numerous resources. Key all photographs to this map and insert immediately after the photo log and before the list of figures).



Campbell, Harry and Fern, House  
 Name of Property

Latah, Idaho  
 County and State

**Photographs:**

Submit clear and descriptive photographs. The size of each image must be 3000x2000 pixels, at 300 ppi (pixels per inch) or larger. Key all photographs to the sketch map. Each photograph must be numbered and that number must correspond to the photograph number on the photo log. For simplicity, the name of the photographer, photo date, etc. may be listed once on the photograph log and doesn't need to be labeled on every photograph.

**Name of Property:** Campbell, Harry and Fern, House  
**City or Vicinity:** Troy  
**County:** Latah **State:** Idaho  
**Photographer:** Kerry Davis  
**Date Photographed:** January 14, 2018

Description of Photograph(s) and number, include description of view indicating direction of camera: *All digital images labeled as follows: ID\_LatahCo\_Campbell\_00#.tif*

Photo #1	View North of property from South Main Street.
Photo #2	View Northeast of primary (southwest) elevation.
Photo #3	View Northwest of southeast elevation.
Photo #4	View West of northeast elevation.
Photo #5	View Southeast of northwest elevation.
Photo #6	View Northeast of garage (southwest elevation).
Photo #7	View Northeast of gable detail (southwest elevation).
Photo #8	View North of porch and entry detail (southwest elevation).
Photo #9	View East of living room.
Photo #10	View Northwest of dining room.
Photo #11	View Southwest of sunroom.
Photo #12	View North of kitchen.
Photo #13	View Northwest of hall.
Photo #14	View North of first floor bedroom (built-ins).
Photo #15	View East of first floor bathroom (built-ins).
Photo #16	View East of upstairs hall.

**Paperwork Reduction Act Statement:** This information is being collected for applications to the National Register of Historic Places to nominate properties for listing or determine eligibility for listing, to list properties, and to amend existing listings. Response to this request is required to obtain a benefit in accordance with the National Historic Preservation Act, as amended (16 U.S.C.460 et seq.).

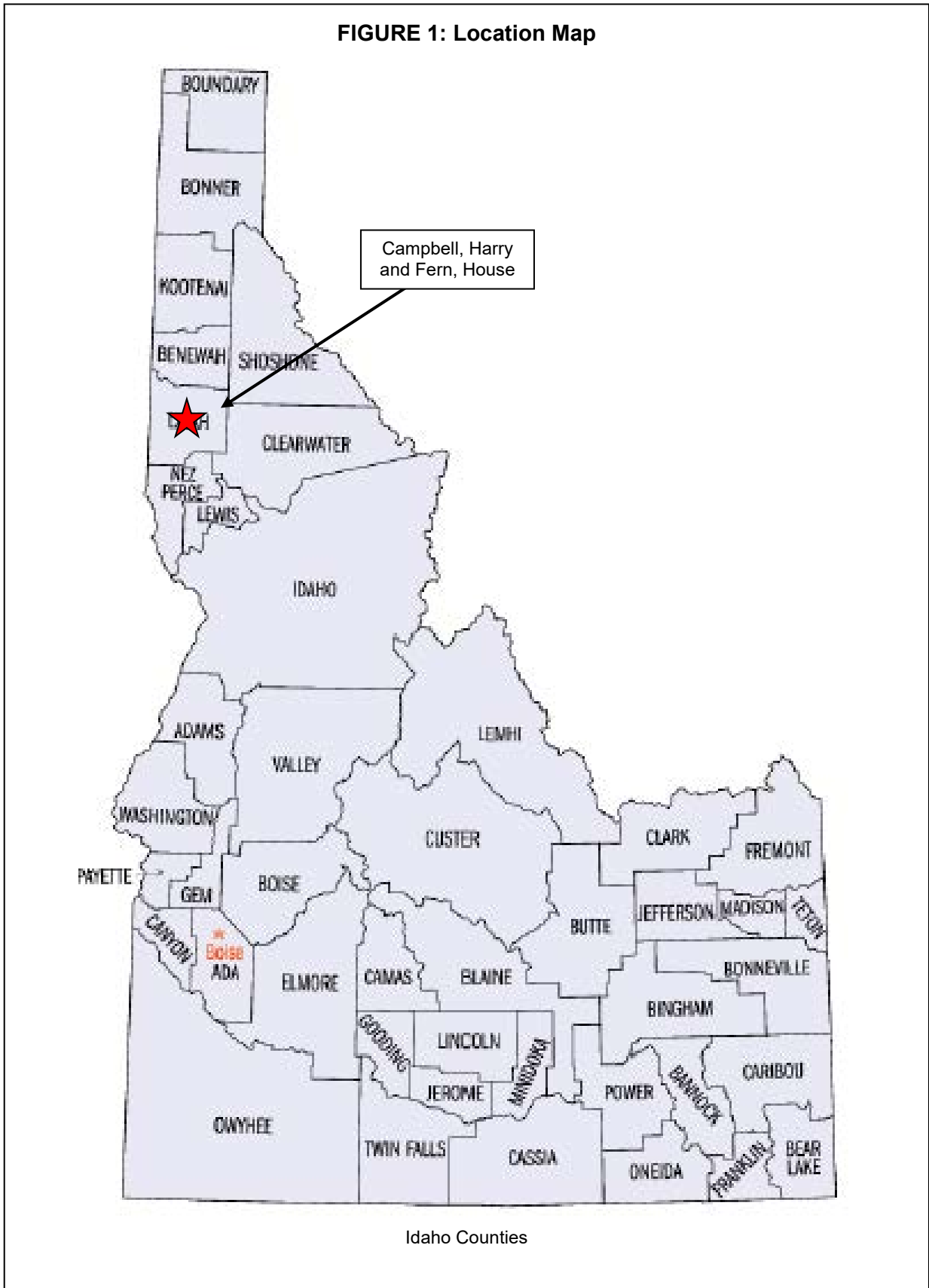
**Estimated Burden Statement:** Public reporting burden for this form is estimated to average 100 hours per response including time for reviewing instructions, gathering and maintaining data, and completing and reviewing the form. Direct comments regarding this burden estimate or any aspect of this form to the Office of Planning and Performance Management, U.S. Dept. of the Interior, 1849 C. Street, NW, Washington, DC.

Campbell, Harry and Fern, House  
Name of Property

Latah, Idaho  
County and State

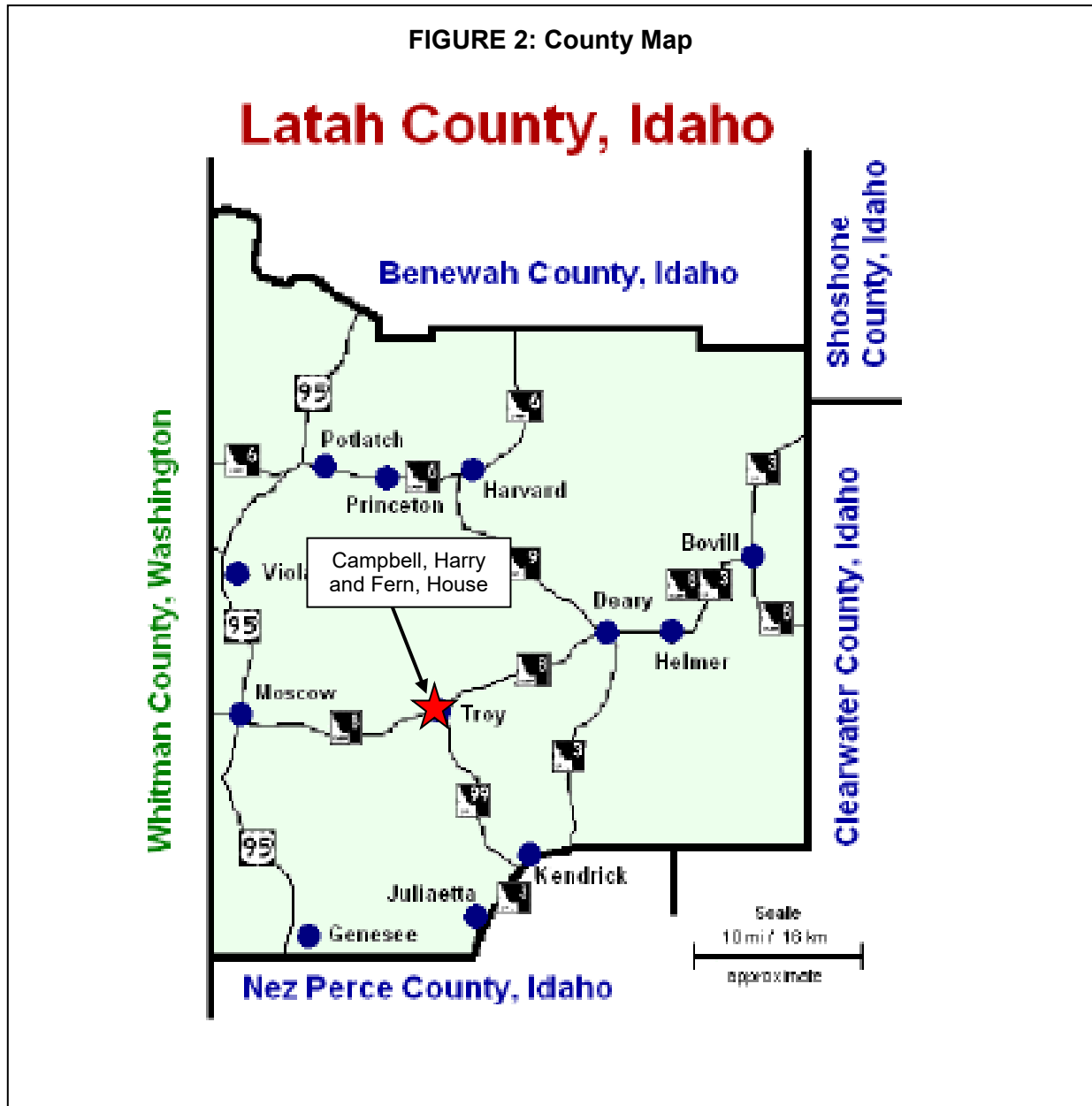
**Additional Documentation**

**FIGURE 1: Location Map**



Campbell, Harry and Fern, House  
Name of Property

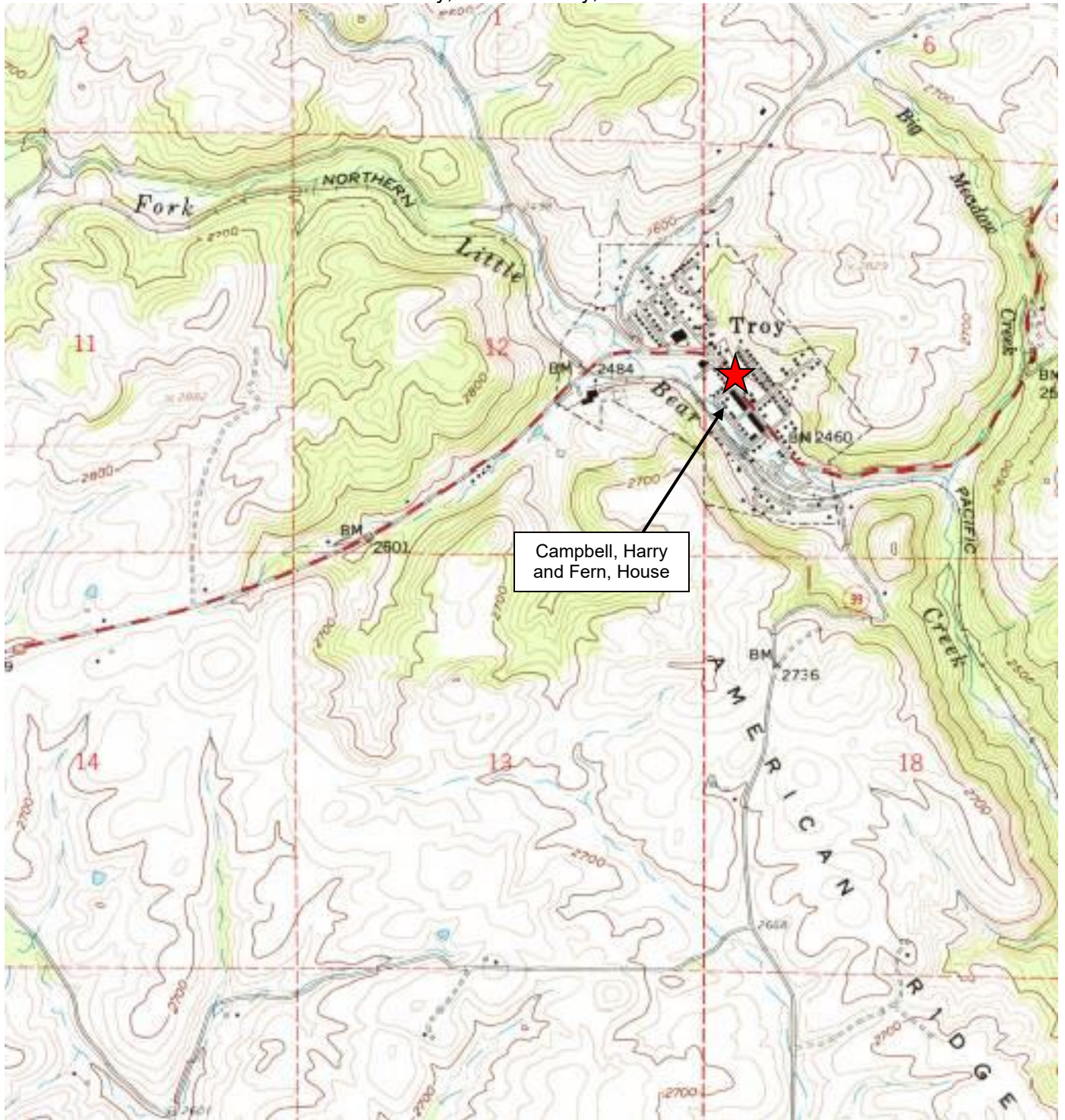
Latah, Idaho  
County and State



Campbell, Harry and Fern, House  
Name of Property

Latah, Idaho  
County and State

**FIGURE 3: USGS Quadrangle Map**  
Troy, Latah County, Idaho



Campbell, Harry  
and Fern, House

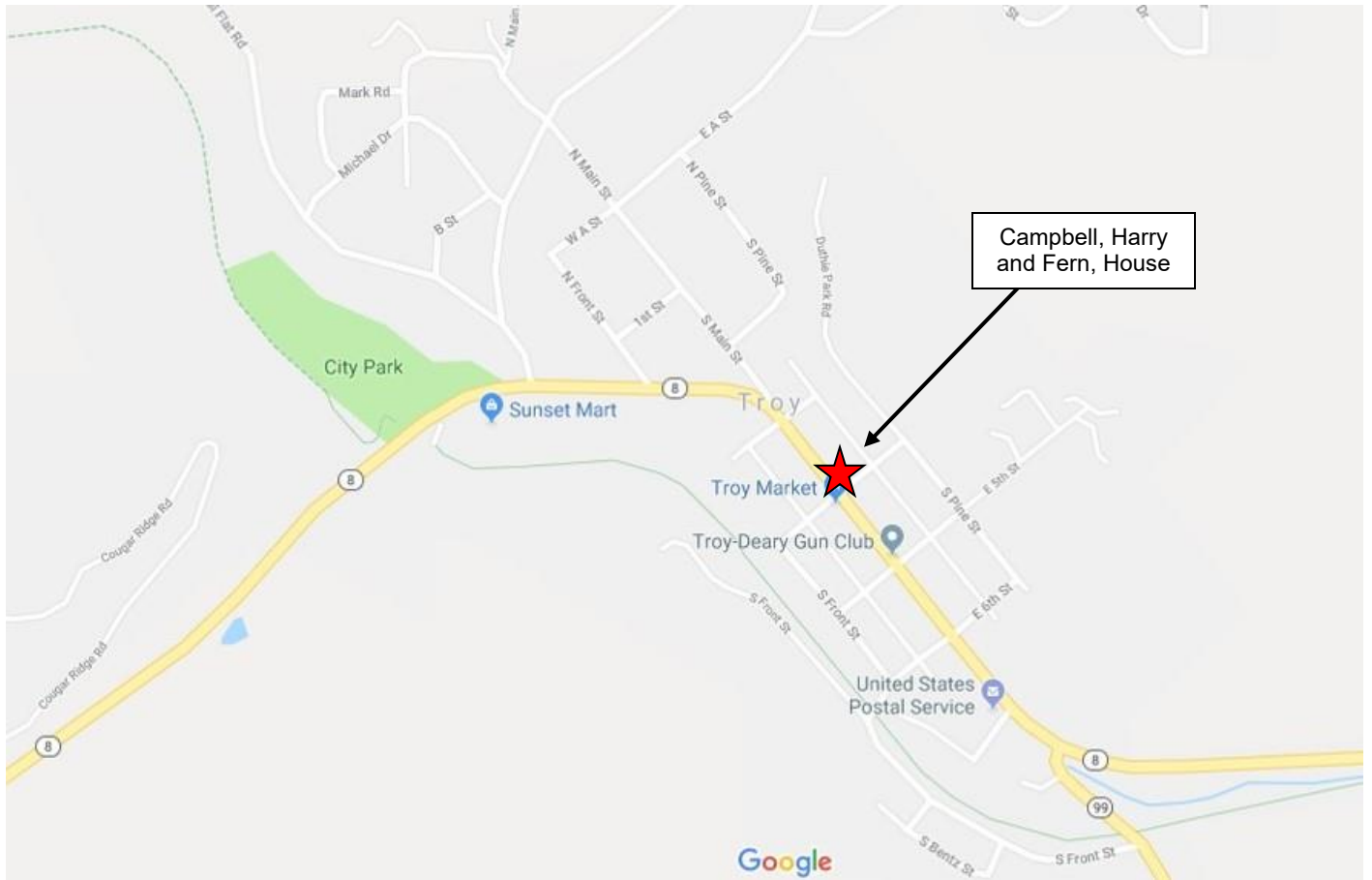
USGS, Troy, Idaho Quadrangle, 1975, 7.5' Series  
T39N, R3W, Section 7 – Latah County  
Scale: Approx. 1:24,000



Campbell, Harry and Fern, House  
Name of Property

Latah, Idaho  
County and State

**FIGURE 4: General Location Map**  
Campbell, Harry and Fern, House  
Troy, Latah County, Idaho



Campbell, Harry and Fern, House  
Name of Property

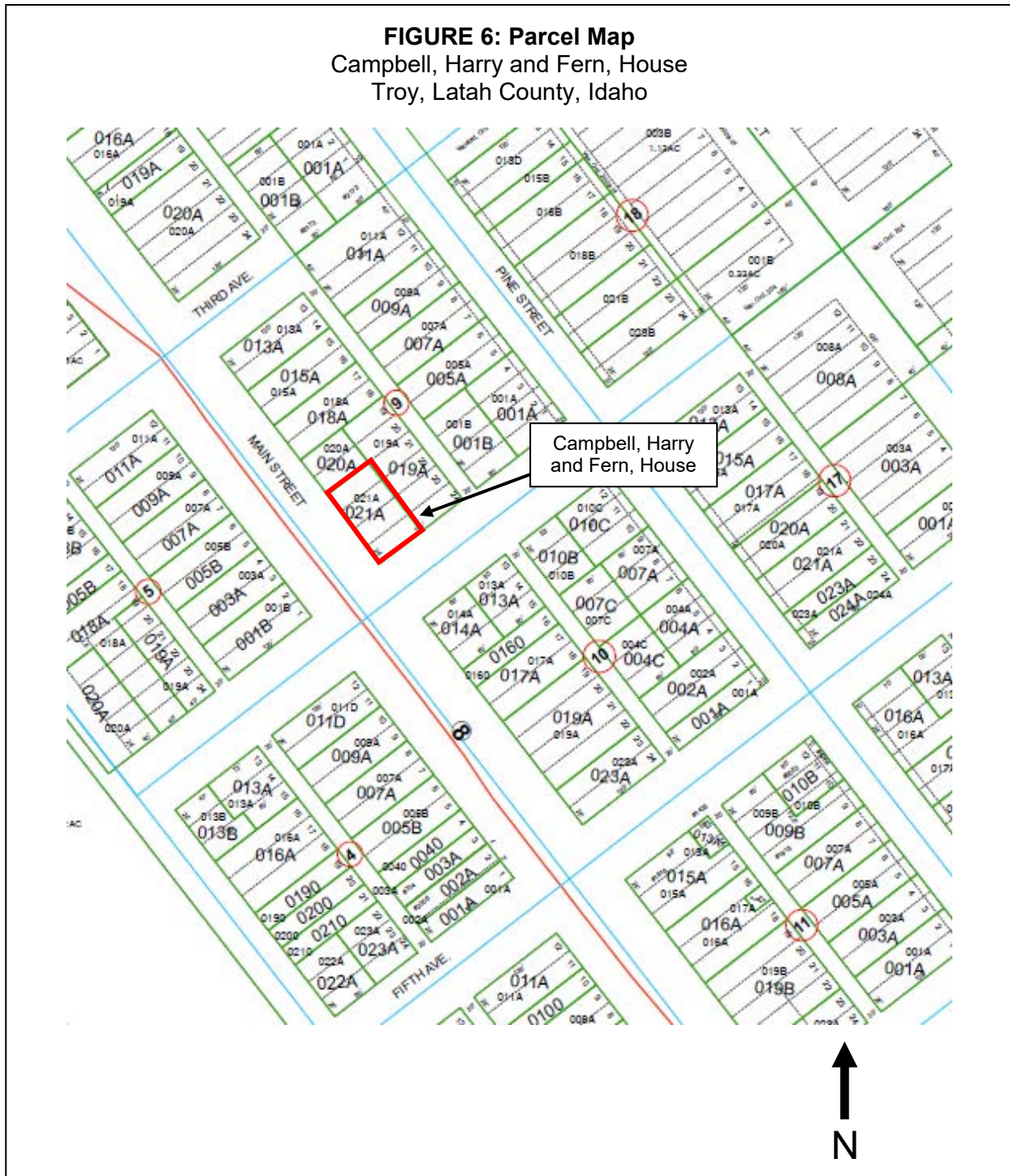
Latah, Idaho  
County and State

**FIGURE 5: Setting Map**  
Campbell, Harry and Fern, House  
Troy, Latah County, Idaho



Campbell, Harry and Fern, House  
Name of Property

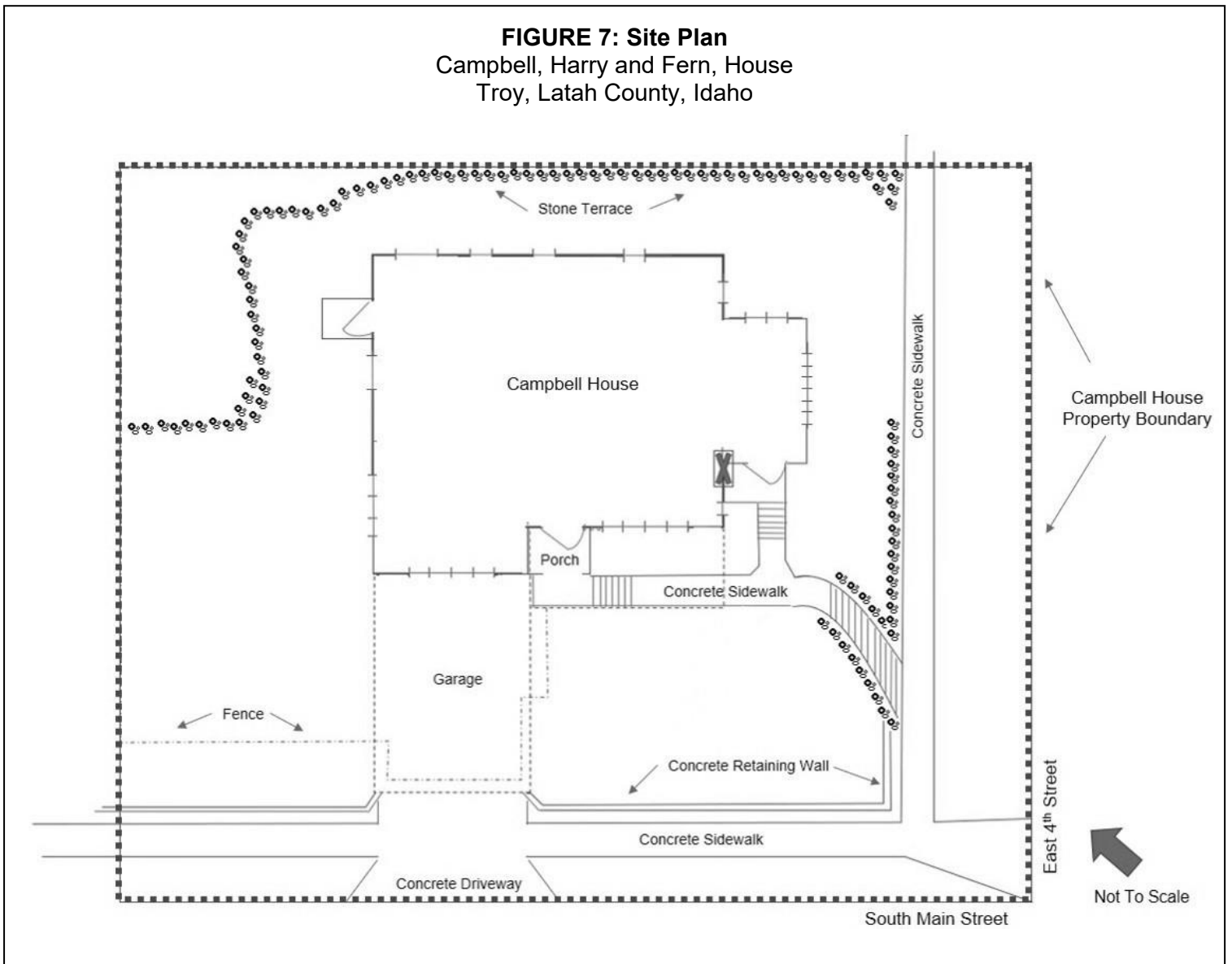
Latah, Idaho  
County and State



Campbell, Harry and Fern, House  
Name of Property

Latah, Idaho  
County and State

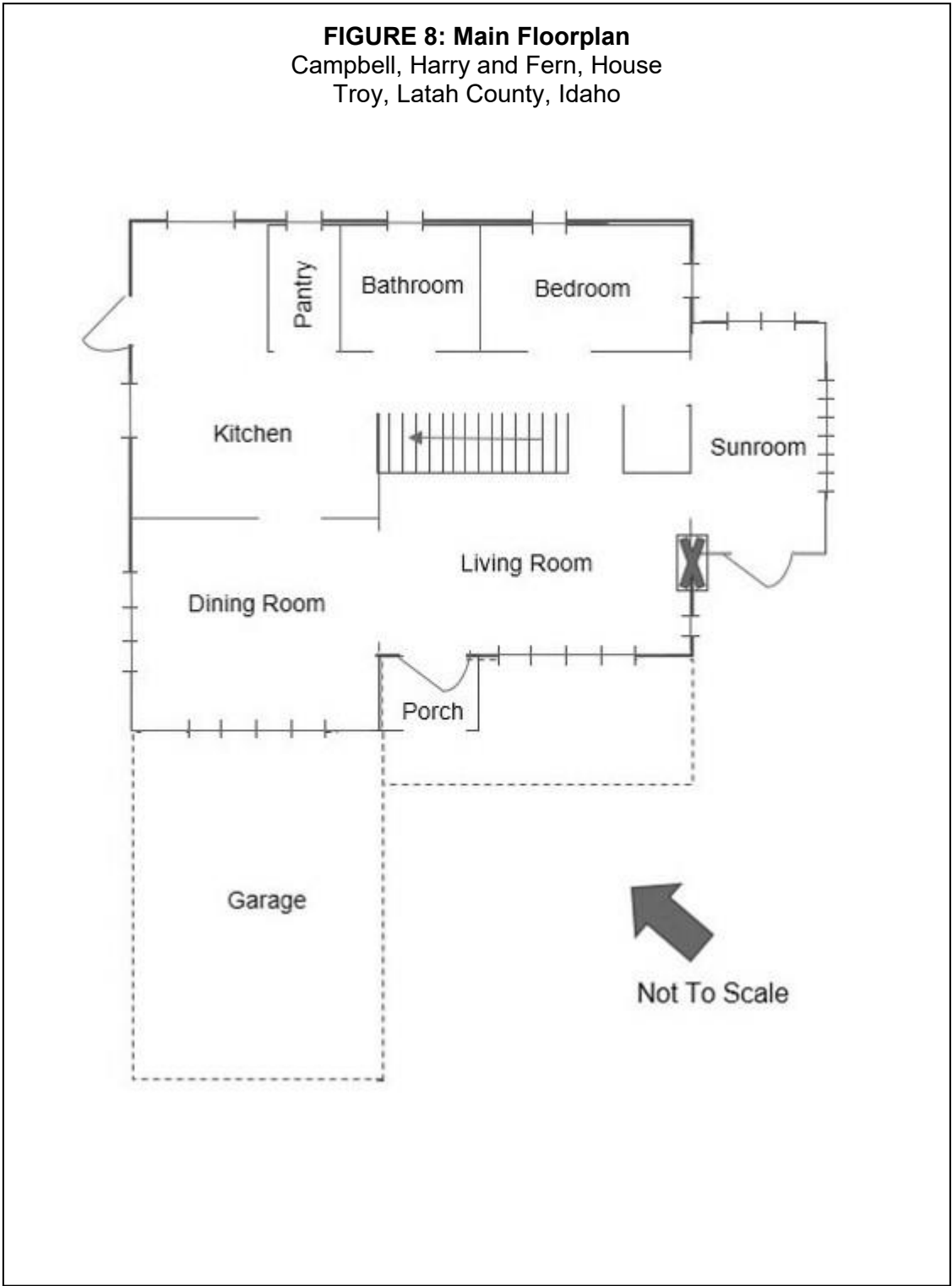
**FIGURE 7: Site Plan**  
Campbell, Harry and Fern, House  
Troy, Latah County, Idaho





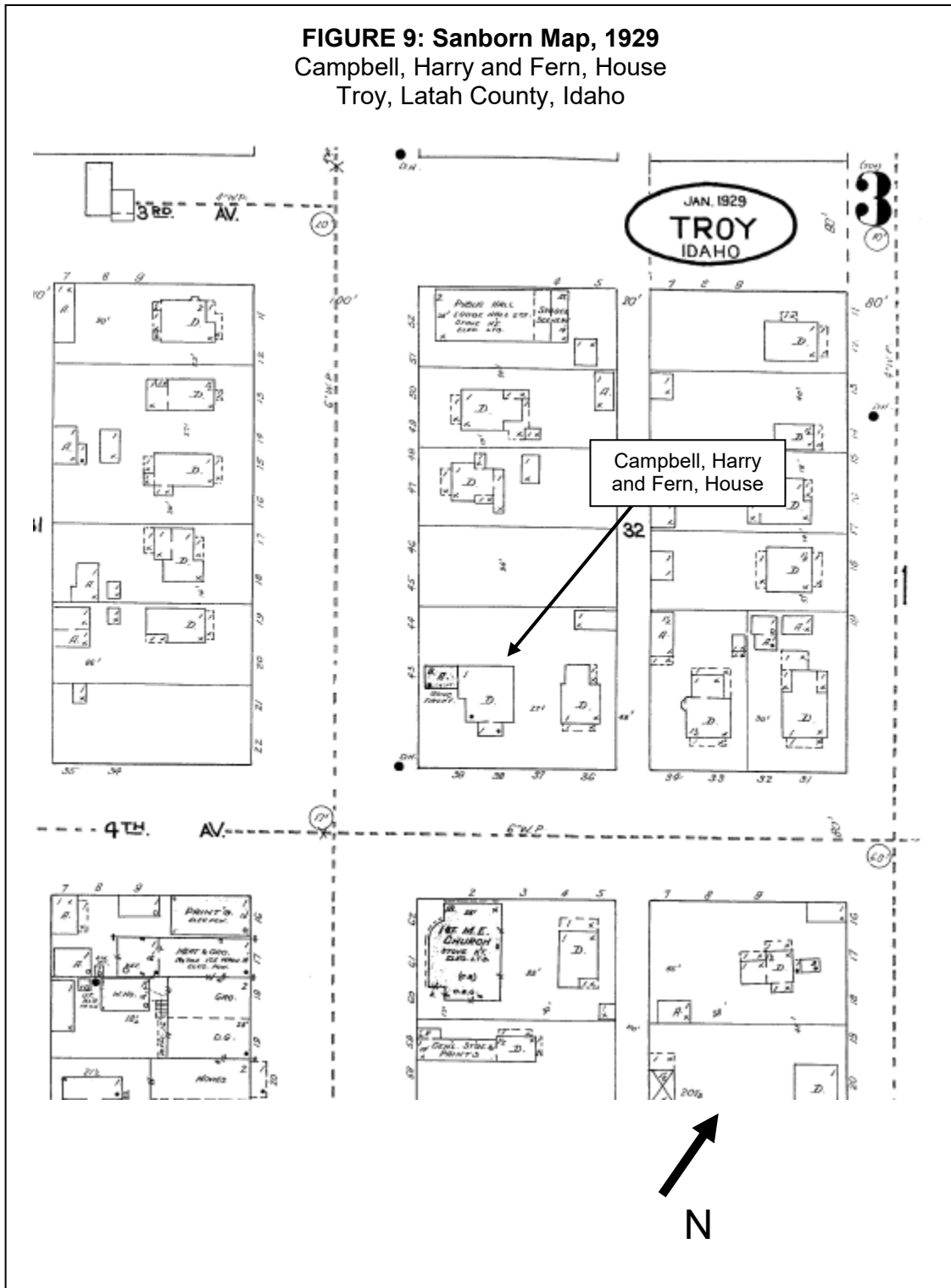
Campbell, Harry and Fern, House  
Name of Property

Latah, Idaho  
County and State



Campbell, Harry and Fern, House  
Name of Property

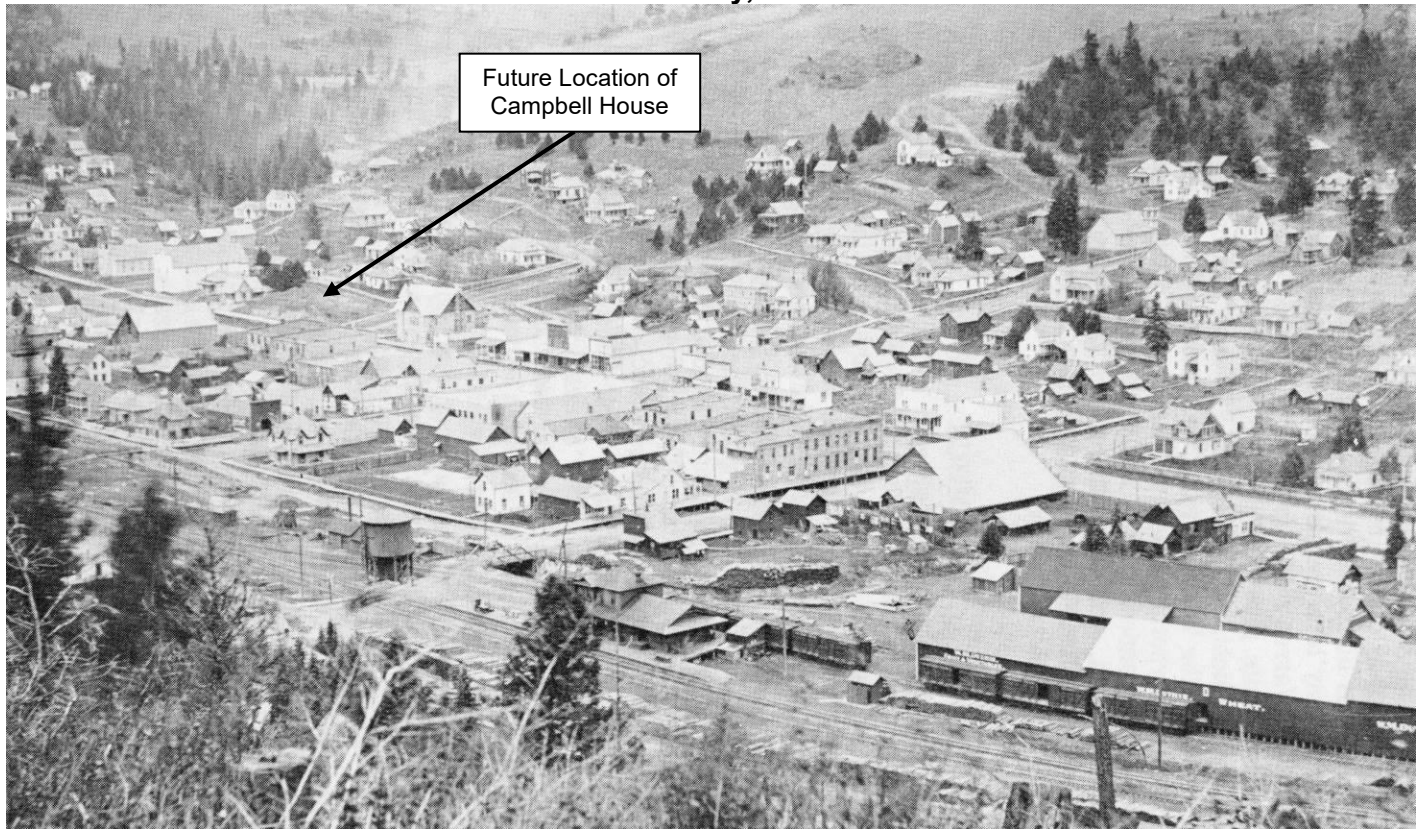
Latah, Idaho  
County and State



Campbell, Harry and Fern, House  
Name of Property

Latah, Idaho  
County and State

**FIGURE 10: Troy, Circa 1920**



*Photo courtesy of Driscoll's They Came to a Ridge*

**FIGURE 11: Troy, Circa 1920**



*Courtesy Troy Historical Society*

Campbell, Harry and Fern, House  
Name of Property

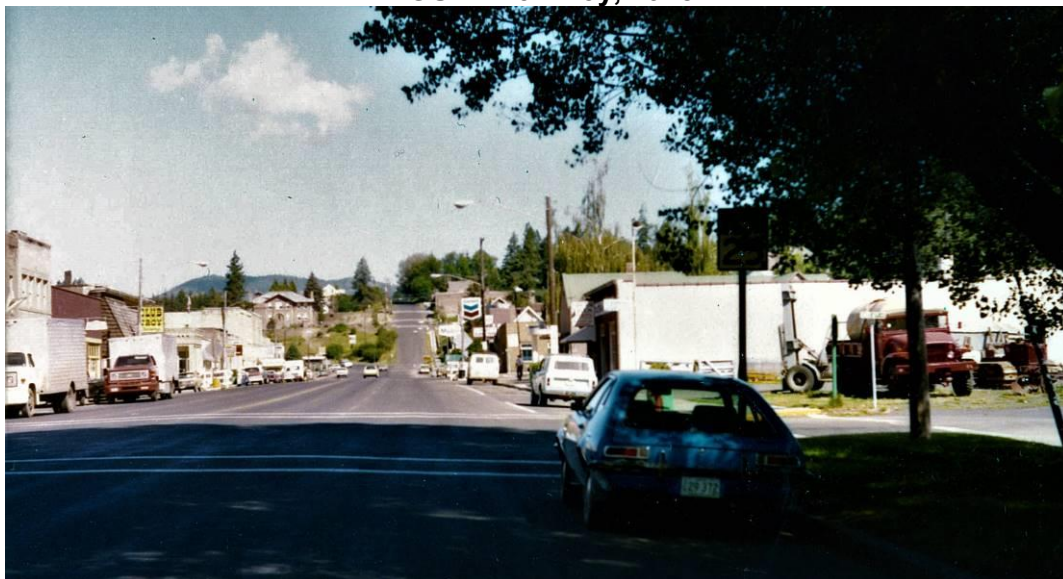
Latah, Idaho  
County and State

**FIGURE 12: Troy, Circa 1950**



*Courtesy Idaho State Historical Society, Idaho Transportation Department Collection (Ref.No. ITD AERO\_00104\_1)*

**FIGURE 13: Troy, 1978**



*Courtesy Idaho State Historical Society, Idaho Transportation Department Collection  
(Ref. No. ITD2\_02162 Box 6, Folder 12)*

Campbell, Harry and Fern, House  
Name of Property

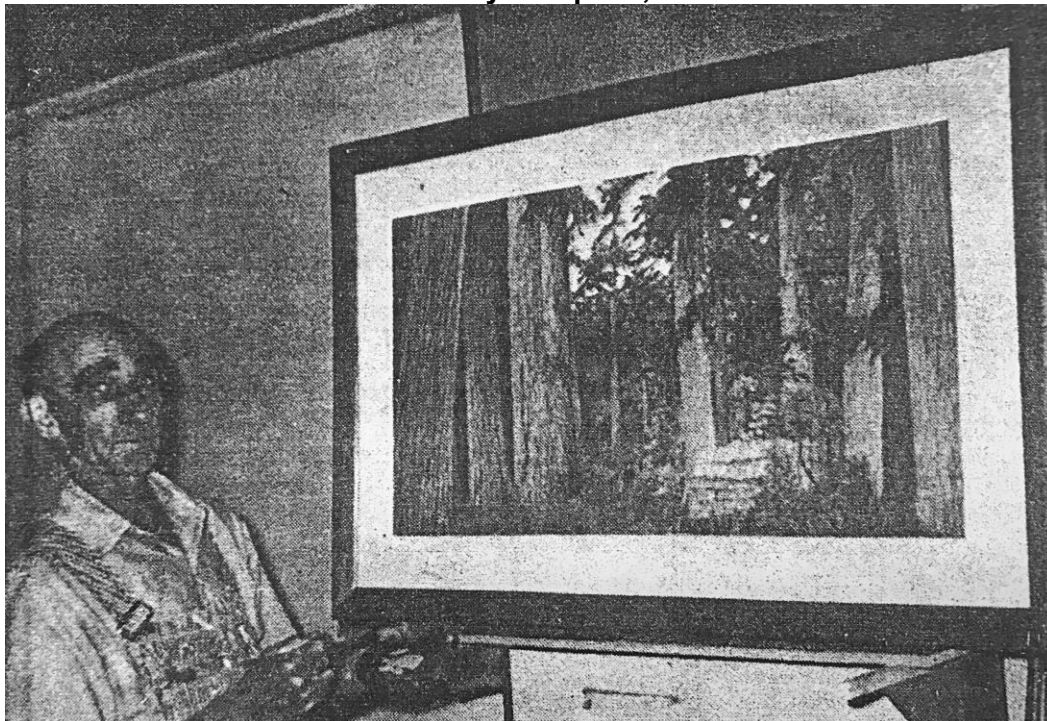
Latah, Idaho  
County and State

**FIGURE 14: Harry Campbell, Circa 1918**



*Courtesy Troy Historical Society*

**FIGURE 15: Harry Campbell, Circa 1960**



*Courtesy Troy Historical Society*

Campbell, Harry and Fern, House  
Name of Property

Latah, Idaho  
County and State

**FIGURE 16: Harry Campbell, 1971**



*Courtesy Troy Historical Society*

**FIGURE 17: Fern Campbell, 1990**



*Courtesy private collection of Kristen Raasch*

Campbell, Harry and Fern, House  
Name of Property

Latah, Idaho  
County and State

**FIGURE 18: Advertisement, Circa 1930**

Interiors and Exteriors Which  
Make Your House a Home

DO YOU KNOW that all material that makes  
a home more beautiful, is the lowest in price  
it has been for years?

Wall Paper, Kalsomine, Plastic Finishes and  
Paints, also Lumber for a Cozy Nook,  
Built-ins, Enclosed Porches and  
General Remodeling.

I Specialize in the Above Work and  
guarantee to give satisfaction at popular prices.  
**FREE ESTIMATES**

If a trip to my home is not convenient, **Phone  
42W** and I will be pleased to call and give you  
any desired information along lines of real  
economy.

**H. H. CAMPBELL**  
BUILDER AND DECORATOR  
TROY IDAHO

*Courtesy private collection of Kristen Raasch*

**FIGURE 19: Advertisement, 1938**

**H. H. Campbell**  
GENERAL CONTRACTOR

Pittsburgh Paints and Varnishes, Mayflower Wallpaper

CABINET WORK                      PHONE 61W

*Courtesy private collection of Kristen Raasch*

Campbell, Harry and Fern, House  
Name of Property

Latah, Idaho  
County and State

**FIGURE 20: Advertisement, 1954**



*Courtesy Troy Historical Society*

**FIGURE 21: Hansen House, 815 East 6<sup>th</sup> St., Moscow, Idaho  
Built by Harry Campbell in 1936**

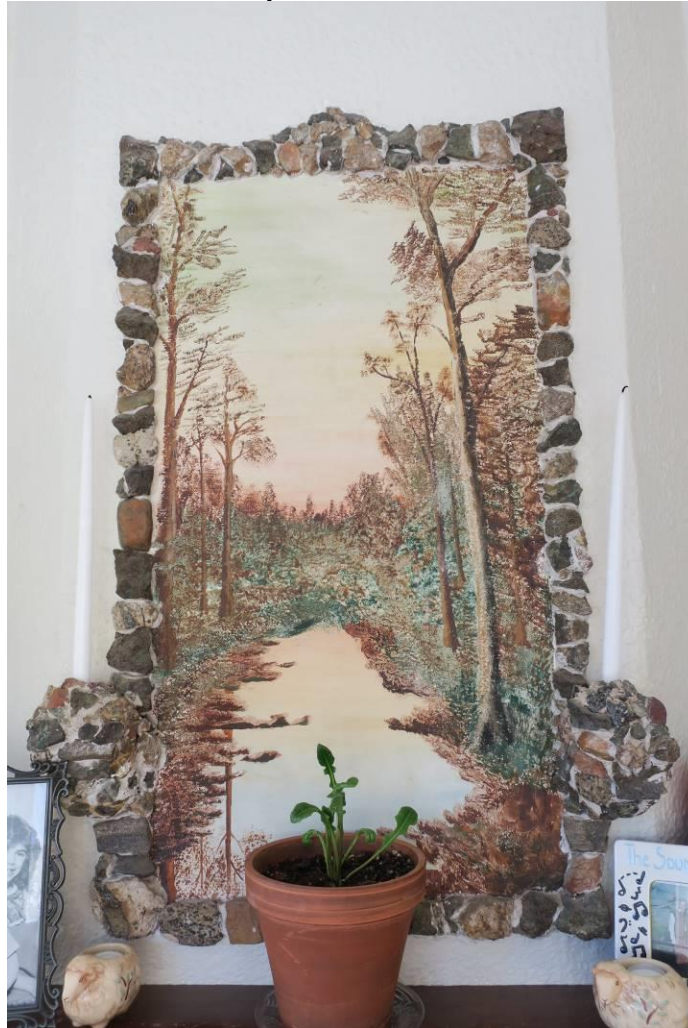




Campbell, Harry and Fern, House  
Name of Property

Latah, Idaho  
County and State

**FIGURE 22: Campbell House Sunroom Fresco**



Located above the fireplace, the fresco's frame is composed of the same stone as the fireplace below and projects to form candle sconces on either side. Though undated, this composition is believed to be Campbell's first attempt at painting.

**FIGURE 23: Campbell House Sunroom Fresco, detail**



Campbell, Harry and Fern, House  
Name of Property

Latah, Idaho  
County and State

**FIGURE 24: Campbell House Sunroom Mural**



Painted directly on the wall with trim boards nailed to the wall to form a frame, this artwork is undated.

**FIGURE 25: Campbell House Basement Painting**

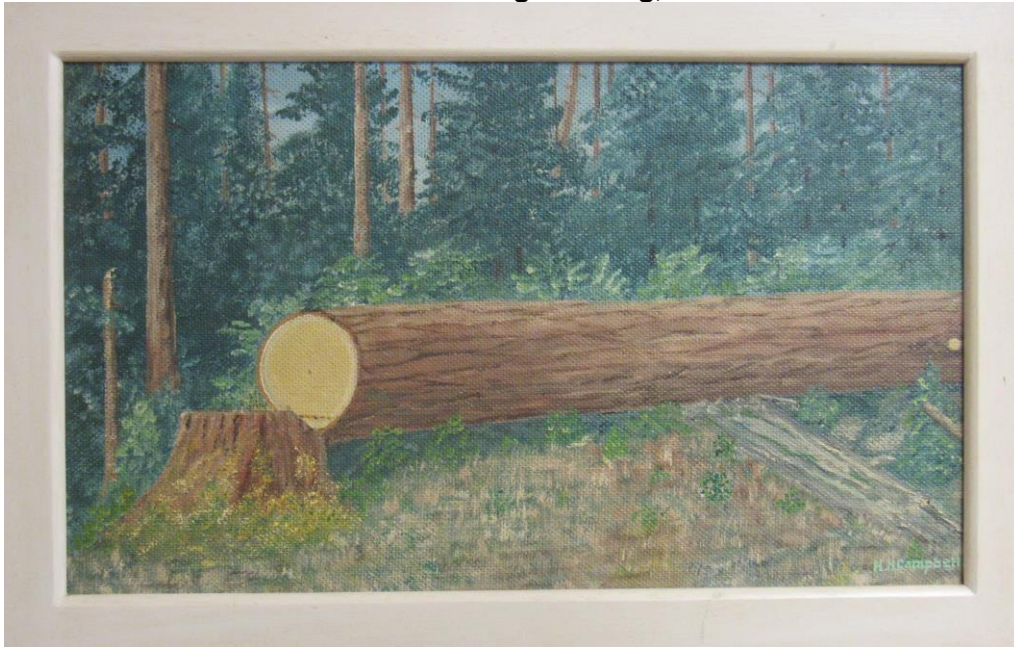


This artwork is undated.

Campbell, Harry and Fern, House  
Name of Property

Latah, Idaho  
County and State

**FIGURE 26: Norm Berg Painting, Circa 1960**



Comprised of enamel on Masonite, the inscription on the reverse reads "Harry Campbell painted this from a photo I took of our woods, probably in the 1940s."  
*Courtesy private collection of Bruce Asplund, Troy, Idaho*

**FIGURE 27: School House Hill, 1964**



Composed of oil on Masonite, this artwork is signed and dated "1-25-64."  
*Courtesy H.H. Campbell Estate Loan to Troy Library*

Campbell, Harry and Fern, House  
Name of Property

Latah, Idaho  
County and State

**FIGURE 28: Backdrop Painting**

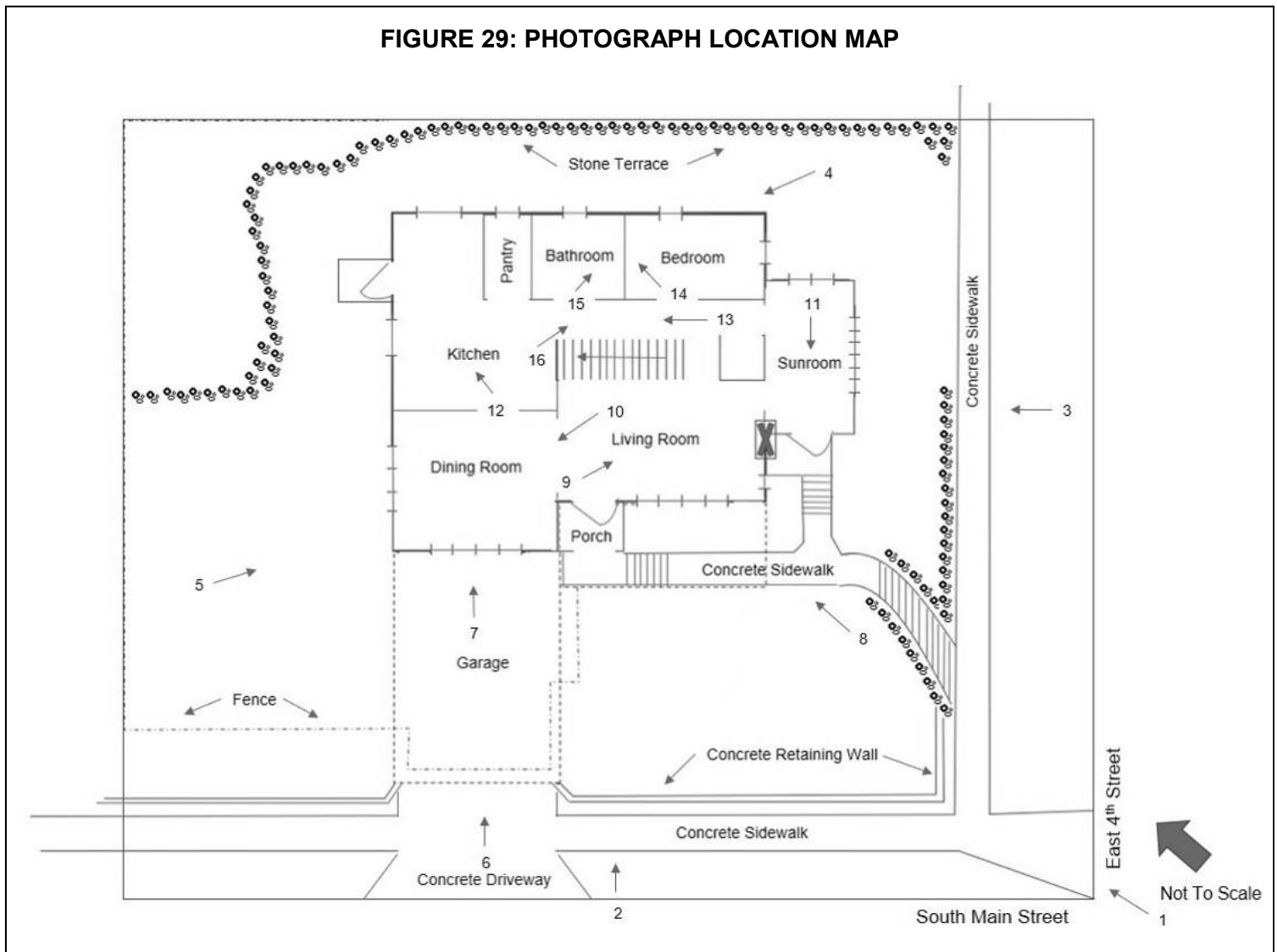


Composed of oil house paint on canvas drop cloth, this 7.5 feet by 7.75 feet backdrop is undated.  
*Courtesy Emily Rauch Loan to Troy Historical Society Museum*

Campbell, Harry and Fern, House  
Name of Property

Latah, Idaho  
County and State

FIGURE 29: PHOTOGRAPH LOCATION MAP



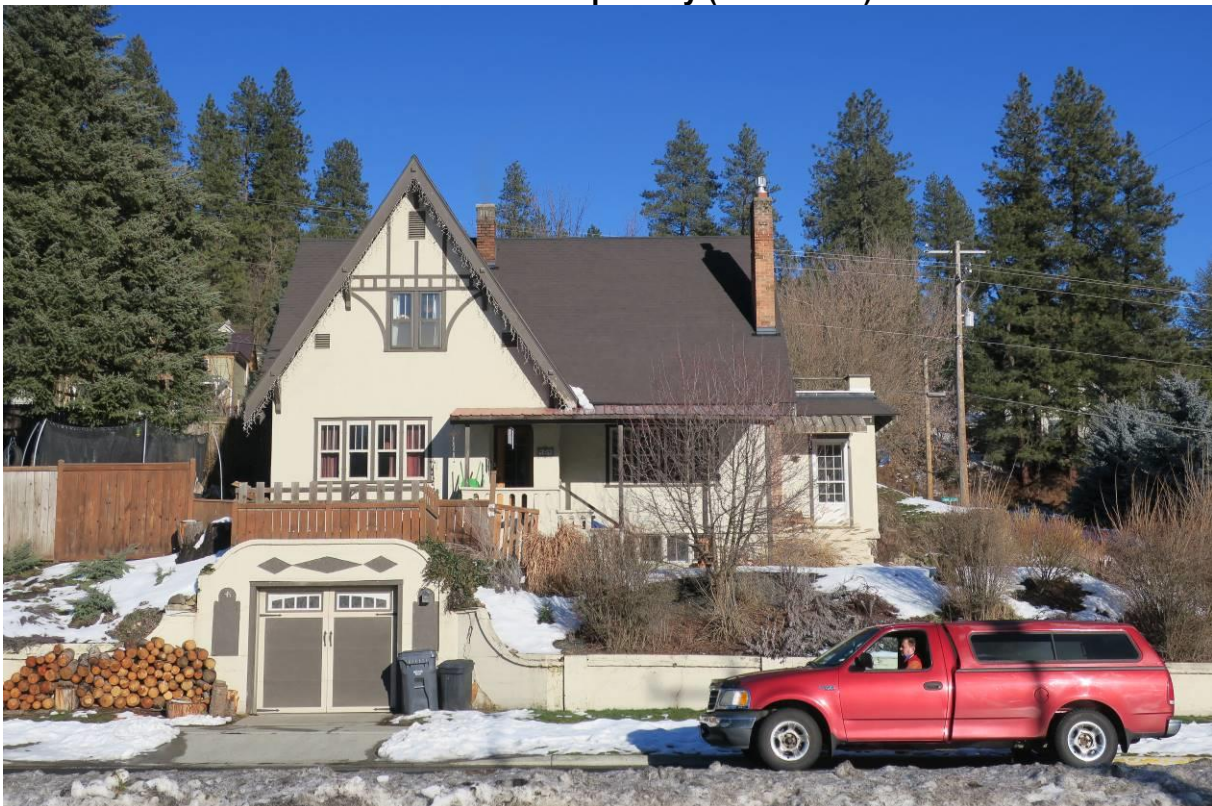
Campbell, Harry and Fern, House  
Name of Property

Latah, Idaho  
County and State

**Photo 1: View North of property from South Main Street**



**Photo 2: View Northeast of primary (southwest) elevation**



Campbell, Harry and Fern, House  
Name of Property

Latah, Idaho  
County and State

**Photo 3: View Northwest of Southeast elevation**



**Photo 4: View West of northeast elevation**



Campbell, Harry and Fern, House  
Name of Property

Latah, Idaho  
County and State

**Photo 5: View Southeast of Northwest elevation**



**Photo 6: View Northeast of garage (southwest elevation)**





Campbell, Harry and Fern, House  
Name of Property

Latah, Idaho  
County and State

**Photo 7: View Northeast of gable detail (southwest elevation)**



**Photo 8: View North of porch and entry detail (southwest elevation)**



Campbell, Harry and Fern, House  
Name of Property

Latah, Idaho  
County and State

Photo 9: View East of living room



Photo 10: View Northwest of dining room



Campbell, Harry and Fern, House  
Name of Property

Latah, Idaho  
County and State

Photo 11: View Southwest of sunroom

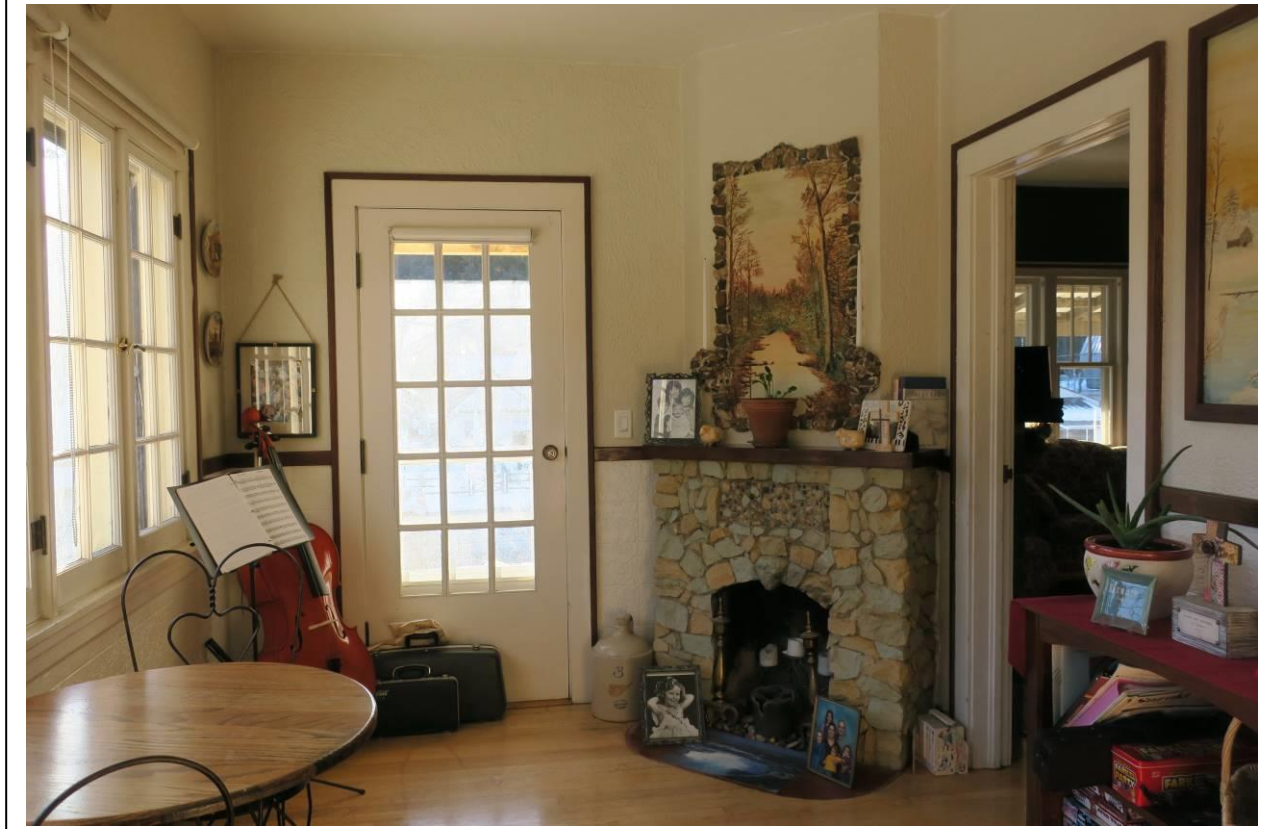


Photo 12: View North of kitchen



Campbell, Harry and Fern, House  
Name of Property

Latah, Idaho  
County and State

**Photo 13: View Northwest of hall**



**Photo 14: View North of first-floor bedroom (built-ins)**



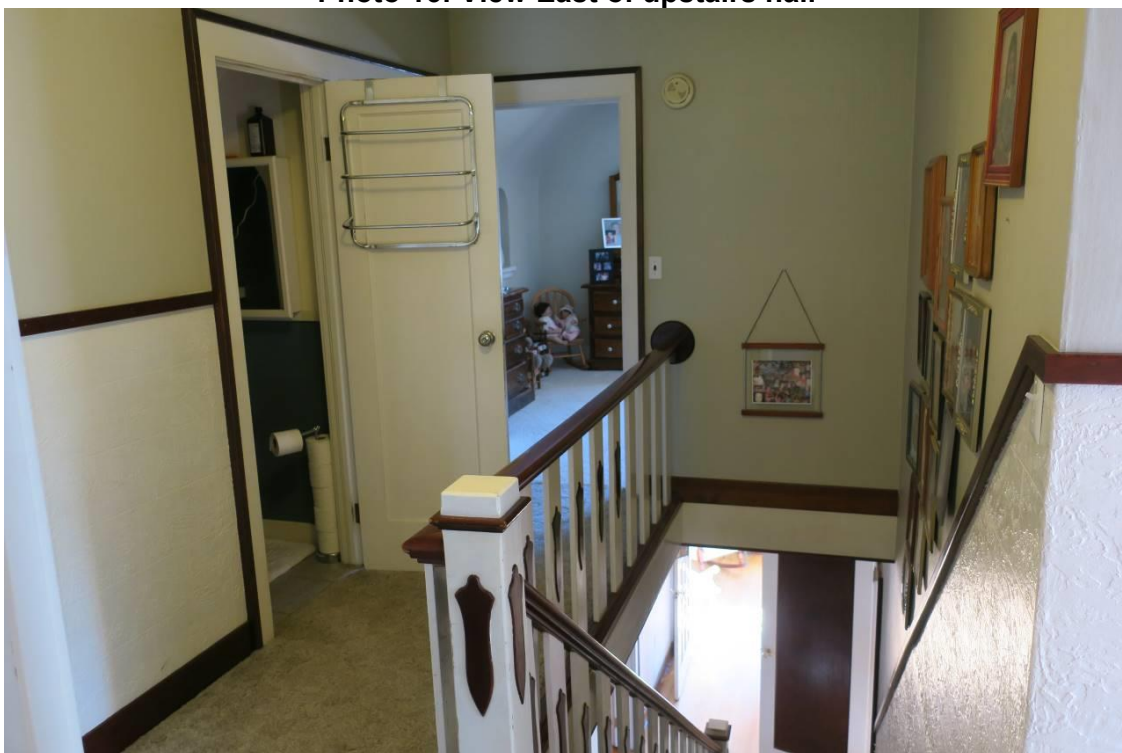
Campbell, Harry and Fern, House  
Name of Property

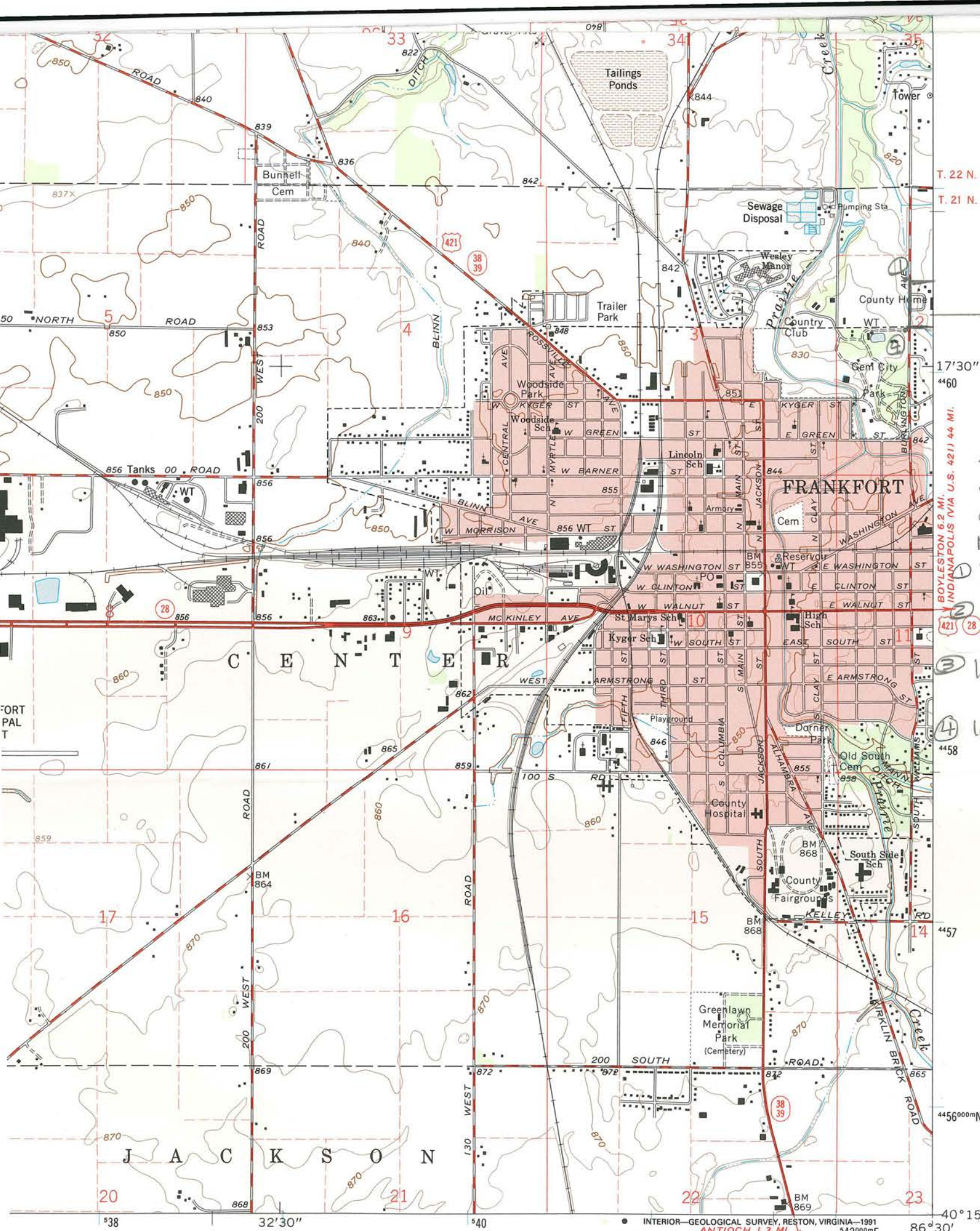
Latah, Idaho  
County and State

**Photo 15: View East of first-floor bathroom  
(built-ins)**



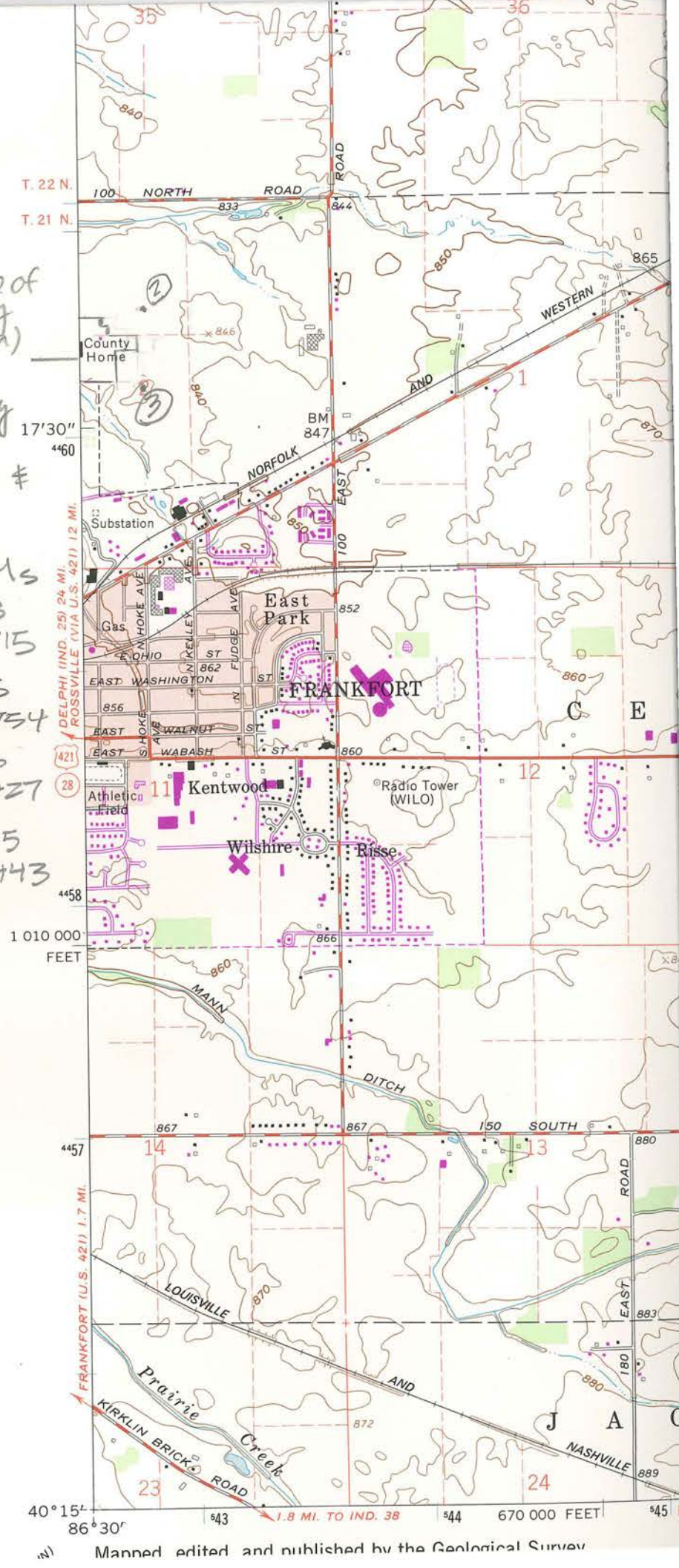
**Photo 16: View East of upstairs hall**





Parkview Home of Clinton County (Eastern portion)  
 Frankfort  
 Clinton County Indiana  
 Michigantown & Frankfort Quads  
 NAD 83 UTM's  
 ① 16 542 353 4460715  
 ② 16 542 725 4460754  
 ③ 16 542 756 4460427  
 ④ 16 542 355 4460443

Parkview Home of Clinton County (Western portion)  
 Frankfort  
 Clinton County Indiana  
 Michigantown & Frankfort Quads  
 NAD 83 UTM's  
 ① 16 542 353 4460715  
 ② 16 542 725 4460754  
 ③ 16 542 756 4460427  
 ④ 16 542 355 4460443





Parcel # 12-10-02-100-004,000-001

Parcel # 12-10-02-326-001,000-021

BURLINGTON AVE

PARKVIEW HOME OF CLINTON COUNTY  
1501 BURLINGTON AVENUE  
FRANKFORT, CLINTON COUNTY, INDIANA

Boundary for National Register Listing  
(Not to Scale)

CLINTON COUNTY  
SURVEYOR'S OFFICE  
Daniel D. Sheets  
Surveyor  
Zachary J. Light  
Deputy Surveyor/GIS Tech  
Jami Pratt  
Office Administrator

**Legend**

-  Roads
-  Parcels



Combine Shed

NC

C ← Tractor Garage

C ← Cattle Barn

121 128 25

C ← Bank Barn

Field C  
Stone Posts

C ← Granary

29

C ← Com Crib  
C ← Hog House

Orig. Cell  
House

Former Garage

6

19

8

15

Main Building

41

7

23

PARKVIEW HOME OF CLINTON COUNTY  
1501 BURLINGTON AVENUE  
FRANKFORT, CLINTON COUNTY, INDIANA  
Photo Locations for Exterior and Site Plan  
C= Contributing feature; NC=Non-contributing feature  
(Not to Scale)

22



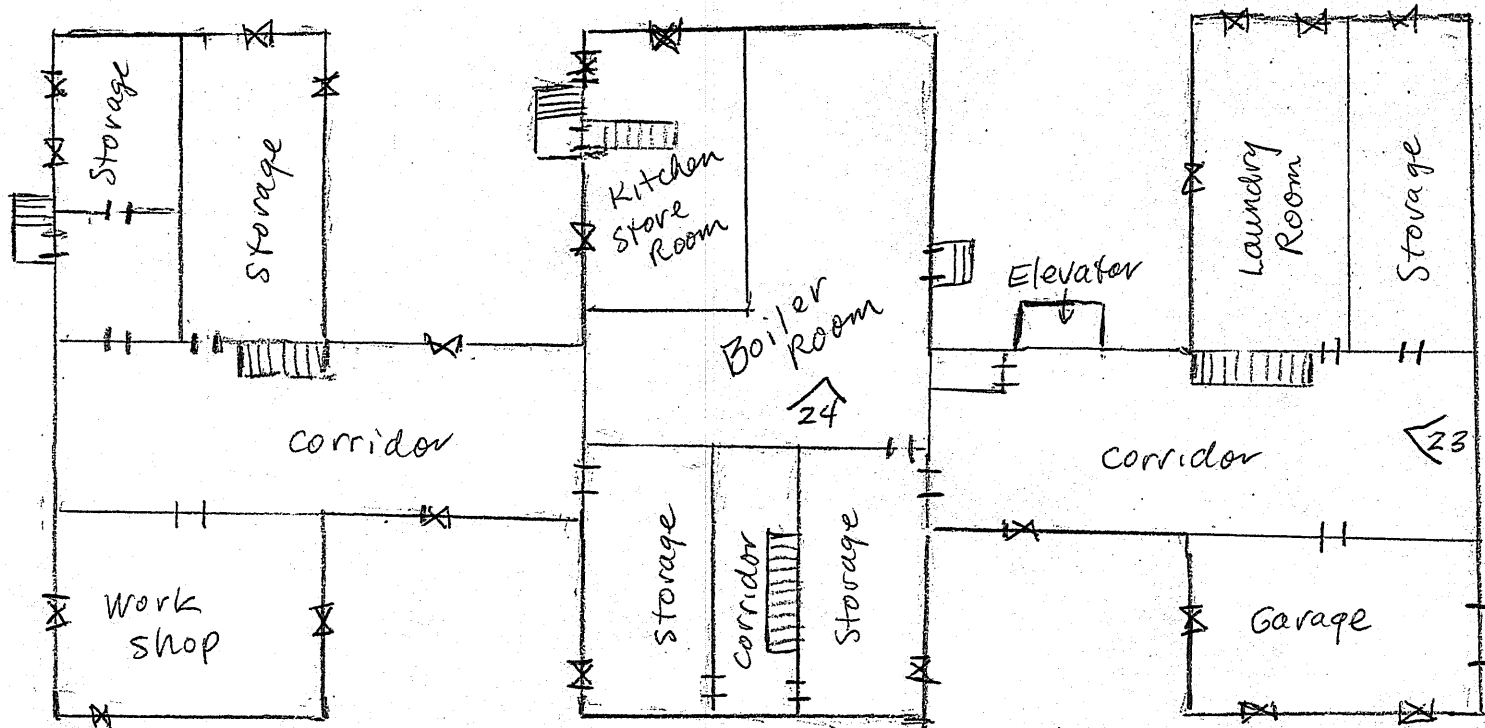
PARKVIEW HOME OF CLINTON COUNTY  
1501 BURLINGTON AVENUE  
FRANKFORT, CLINTON COUNTY, INDIANA

Photo Locations—Basement  
(Not to Scale)

Key to Symbols:

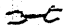

⊠ = windows

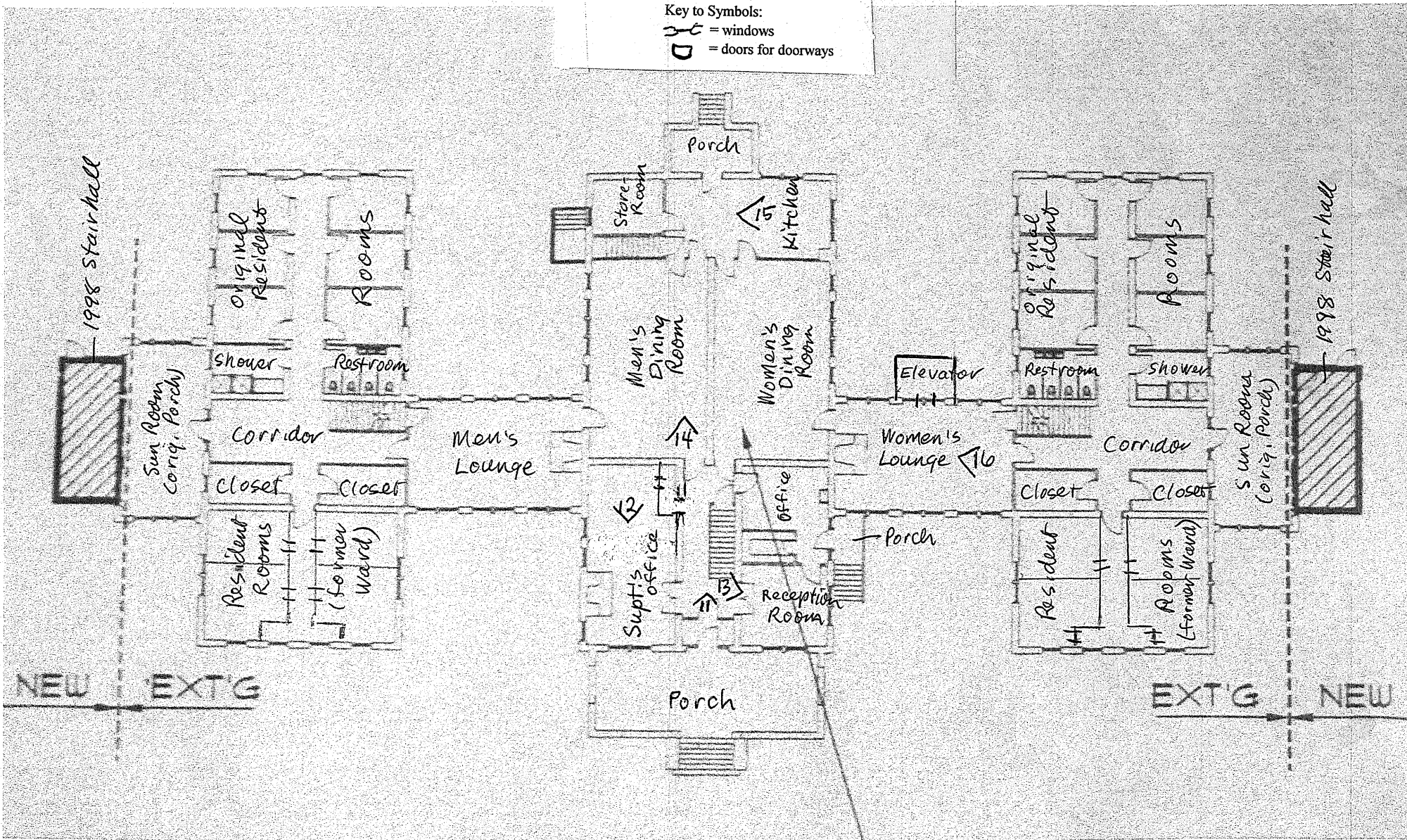
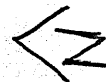
|| = doors for doorways



PARKVIEW HOME OF CLINTON COUNTY  
 1501 BURLINGTON AVENUE  
 FRANKFORT, CLINTON COUNTY, INDIANA

Photo Locations—First Floor  
 (Not to Scale)

Key to Symbols:  
 = windows  
 = doors for doorways



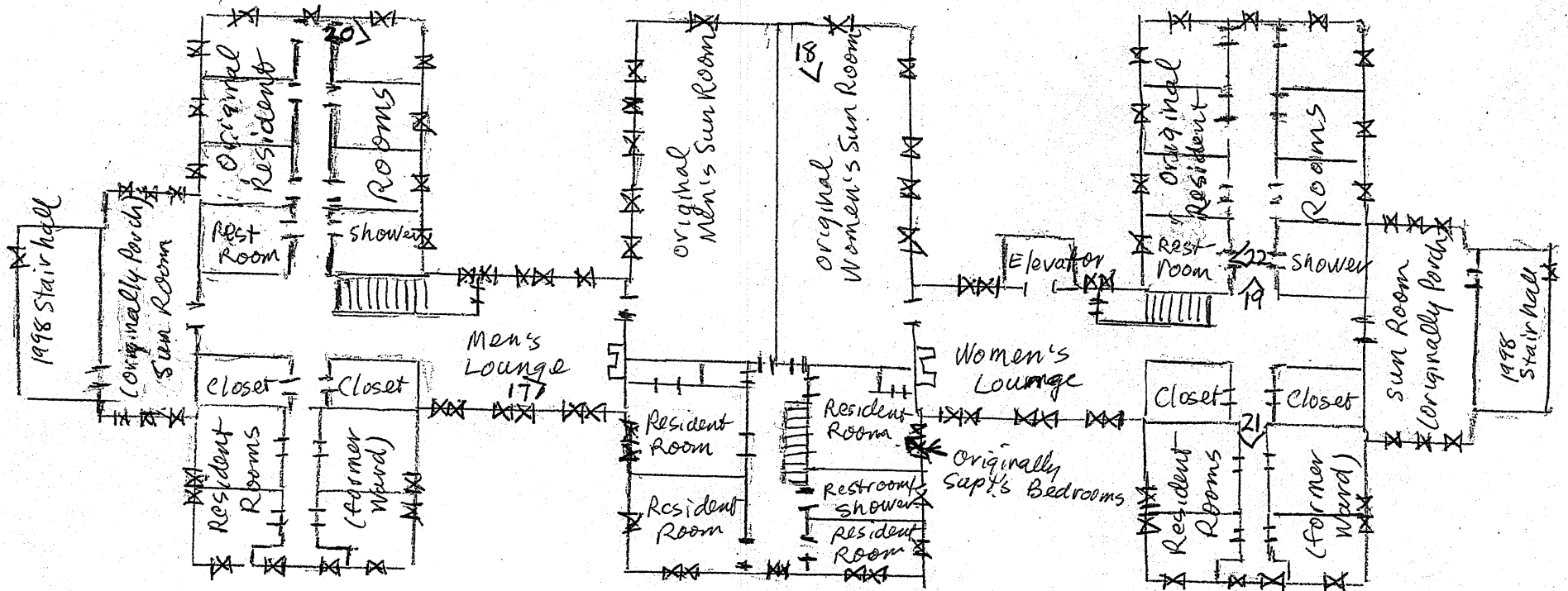
PARKVIEW HOME OF CLINTON COUNTY  
 1501 BURLINGTON AVENUE  
 FRANKFORT, CLINTON COUNTY, INDIANA

Photo Locations—Second Floor  
 (Not to Scale)

Key to Symbols:

X = windows

|| = doors for doorways























Abide  
in Him

*Life's music is ever changing, but how beautiful the dance.*











Ring Dance Love Ring Dance Love Ring Dance

Shelf with books and address book

Shelf with books and framed photos

Shelf with "LIVE Laugh" sign and pen holder

Shelf with mail and envelopes

Shelf with a basket

Black vanity with mirror and drawers

Black vanity top with a mirror, framed photos, and a small box.

Five drawers with black knobs.

White door with corkboard

White door with a corkboard and a black knob.







UNITED STATES DEPARTMENT OF THE INTERIOR  
NATIONAL PARK SERVICE

NATIONAL REGISTER OF HISTORIC PLACES  
EVALUATION/RETURN SHEET

Requested Action:

Property Name:

Multiple Name:

State & County:

Date Received: 10/22/2018      Date of Pending List: 11/16/2018      Date of 16th Day: 12/3/2018      Date of 45th Day: 12/6/2018      Date of Weekly List: 12/7/2018

Reference number:

Nominator:

Reason For Review:

Accept       Return       Reject      12/3/2018 Date

Abstract/Summary  
Comments:

Recommendation/  
Criteria

Reviewer Control Unit      Discipline \_\_\_\_\_

Telephone \_\_\_\_\_      Date \_\_\_\_\_

DOCUMENTATION:    see attached comments : No    see attached SLR : No

If a nomination is returned to the nomination authority, the nomination is no longer under consideration by the National Park Service.



**Latah County**  
**BOARD OF COUNTY COMMISSIONERS**

P.O. Box 8068 ♦ 522 South Adams ♦ Moscow, Idaho 83843  
(208) 883-7208 ♦ fax (208) 883-2280 ♦ e-mail [bocc@latah.id.us](mailto:bocc@latah.id.us)  
*Thomas C. Lamar ♦ David McGraw ♦ Richard Walser*

September 10, 2018

Jamee Fiore  
National Register Coordinator  
210 Main Street  
Boise, ID 83702

RE: Harry and Fern Campbell House National Register of Historic Places nomination

Dear Ms. Fiore,

The Latah County Board of County Commissioners wish to express our support of the nomination of the Harry and Fern Campbell House to the National Register of Historic Places.

Sincerely,  
Latah County Board of County Commissioners,

Thomas C. Lamar  
Chair

David McGraw  
Commissioner

Richard Walser  
Commissioner

Attest:

Date: 9-10-18

Encl.

Luke Sprague  
517 E C Street  
Moscow, Idaho 83843  
September 10, 2018

Latah County Board of County Commissioners  
ATTN: Kara Egan  
PO Box 8068  
Moscow, Idaho 83843

RE: Latah Preservation Commission's recommendation on the Harry and Fern Campbell House

Dear Latah County Board of County Commissioners,

On August 30, 2018, in Troy, Idaho, following a public hearing on the matter, the Latah Preservation Commission voted unanimously to recommend the Harry and Fern Campbell House National Register nomination to go forward for review and comment by the Latah County Board of County Commissioners.

This vote followed the commission's review of comments made by a qualified Secretary of Interior historian and feedback from the community. See the attached documents: letters of support, public hearing letter of record, and review of nomination.

Please indicate your support of this nomination by signing the "Campbell House BOCC Letter of Support" and add it to this packet.

If the county commissioners have any additional comments they should be entered at this time. Following the commissioners' review the *entire* packet should be emailed to [Jamee.Fiore@ishs.idaho.gov](mailto:Jamee.Fiore@ishs.idaho.gov) and mailed to:

Jamee Fiore  
Idaho State Historic Preservation Office  
210 Main Street  
Boise, ID 83702

Please contact me if you have any questions (208) 301-3528 or [luke@historymint.com](mailto:luke@historymint.com).

Sincerely,



Luke Sprague, MA  
Historian

Enclosures:

- (3) letters of support
- (1) review of nomination
- (1) public hearing letter of record
- (1) BOCC letter of support

HistoryMint  
PO Box 8795  
Moscow, Idaho 83843  
September 5, 2018

Jamee Fiore  
National Register Coordinator  
210 Main Street  
Boise, Idaho 83702

SUBJECT: Letter of Record for Public Hearing on Campbell House Nomination

Dear Ms. Fiore,

A public hearing was held for the Harry and Fern Campbell House National Register nomination at 6 p.m. on August 30, 2018, at the Troy Museum, 421 S. Main Street, Troy, Idaho. Meeting notices had been posted in Troy and in the county courthouse. The meeting lasted until 6:30 p.m.

Following acknowledgments and a brief history, we opened the floor up to public comments and feedback.

The following comments were made by those in attendance:

Gary Strong – “supporting, well-written prose and visual standpoint.”

Larry La Bolle – “unusual preserve something unique; excellent job; proud of the rest of us.”

Zach Wnek – “Important to document history; no documents. Nomination form send forward. This place matters, well sourced, primary sources, thanks, team.”

There were no negative comments and no additional comments.

Sincerely,

A handwritten signature in black ink, appearing to read 'LS', with a horizontal line extending to the right.

Luke Sprague, M.A.  
Historian  
Idaho Historic Preservation Professional Consultant

**Gary E. Strong**  
**6143 Highway 95**  
**Potlatch, Idaho 83855**  
University Librarian Emeritus, UCLA  
Home: 208-875-1689 \* Cell: 310-488-5025  
[gstrong@library.ucla.edu](mailto:gstrong@library.ucla.edu)

August 14, 2018

Jamee Fiore  
National Register Coordinator  
210 Main Street  
Boise, Idaho 83702

RE: Review of the Campbell House Nomination

Dear Ms. Fiore,

I am writing in support of the nomination of the Campbell House to the National Register. The House represents the work of a local craftsman whose signature created an architectural treasure in Troy (Latah County). As the photographs demonstrate, his style and signature are significant to Latah County's architectural record.

Campbell built homes and projects across Latah County and the Campbell house is the best representation remaining of his contribution and work. To live in such a home was a daily experience. You found his signature throughout with his inlaid woodwork and cabinetry. Growing up in North Latah County, I particularly appreciate his use of wood exposing the grain itself and how he reused materials in his work. Timber and wood represent an important legacy here. His interior landscape murals of the Pacific Northwest have been well preserved and are noteworthy in their own right.

I concur that the Campbell House retains all seven elements of historic integrity: location, design, setting, materials, workmanship, feeling, and association. The Campbell House is unique to Troy and worth adding to the National Register of Historic Places.

Sincerely,

Gary E. Strong, Member  
Latah Preservation Commission  
Vice-President, Potlatch Historical Society



August 9, 2018

1189 Drury Road  
Deary, Idaho 83823

Idaho State Historic Sites Review Board

Re: Harry and Fern Campbell House nomination

Dear Board Members,

I am writing to express support for the nomination of the Harry and Fern Campbell House located in Troy, Latah County, Idaho to the National Register of Historic Places.

The overall design, placement and documentation supports and illustrates the characteristics of the Tudor Revival design found in a home built during the first portion of the 20<sup>th</sup> Century. The structure has only minor alterations which do not significantly detract from the Tudor Revival design or the superb workmanship that is found throughout the structure.

The house is a unique example of early 20<sup>th</sup> Century residential construction because it incorporates multiple materials such as brick work, stone work, stucco and extensive exterior woodwork which is tastefully painted or stained to help emphasize its primary design characteristics. The interior is skillfully finished with the extensive cabinetry and art work for which Mr. Campbell was well known.

The setting of the House is supported by the nearby brick business district which correctly reflects small town rural America as it existed until after World War II. Surrounding houses, churches and most other structures are of an earlier or contemporary period.

It is important that such structures be preserved and recognized for their historical significance. They help provide a sense of who we are and how we arrived at this point in our development as a community.

Thank for your consideration of this nomination

Sincerely



Larry La Bolle, Vice chair  
Latah County Preservation Commission

Letter of Support for  
Campbell House Nomination,  
for National Historical Site

August 8, 2018

I believe the Campbell House of Troy, Idaho matches “Criteria C” of “Criteria of Evaluation for National Historical Sites: *That embody the distinctive characteristics of a type, period, or method of construction, or that represent the work of a master, or that possess high artistic values, or that represent a significant and distinguishable entity whose components may lack individual distinction*”

I am particularly impressed by the amount of integrity of the architectural style of the Campbell House. Hopefully, this may influence the appreciation for maintaining integrity in other historic homes of this area.

Sincerely,

Diane Conroy  
Genesee, Idaho  
Latah Historic Preservation Board  
White Spring Ranch Museum/Archive Library,  
Authorizing Official

Dorothy Anderson  
PO Box 160  
Troy, Idaho 83871  
August 17, 2018

Jamee Fiore  
National Register Coordinator  
210 Main Street  
Boise, Idaho 83702

SUBJECT: Review of the Campbell House Nomination

Dear Ms. Fiore,

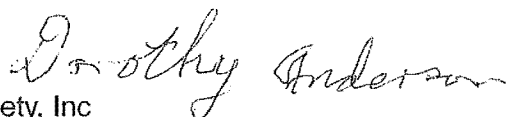
As Troy's historian for some 40 years, The Campbell House has represented the dividing line between pioneer/railroad town construction and Troy's future growth with stucco, an underground garage, decorative carvings and design work.

Stories of Harry have been shared in every walking tour for the school children. He moved his family into town in 1927, just before the Stock Market Crash. He had planned to build other houses but no one had money to build new ones. So he changed his plans and became a remodeler and house painter. Soon Harry was using his left over paint to create pictures for all of his friends. He always called them 'water colors' - but they were done in housepaint. One special snow scene hangs in the Troy City Library.

Harry's ability to take a steep lot where he designed and landscaped his home of three levels so attractively is truly unique. Everyone comments on the architectural gem on the corner of 4th and Main. I believe the Harry Campbell home is worthy of being added to the National Register of Historic Places.

Sincerely,

Dorothy Anderson  
Historian  
Troy Historical Society, Inc



Karen Purtee  
PO Box 9345  
Moscow, Idaho 83843

August 10, 2018

Jamee Fiore  
National Register Coordinator  
210 Main Street  
Boise, Idaho 83702

SUBJECT: Review of the Campbell House Nomination

Dear Ms. Fiore,

The Campbell House greets everyone as they enter Troy as it sits prominently on the corner of 4th and Main unchanged for over 90 years. It is the work of Harry Campbell, a Troy native son.

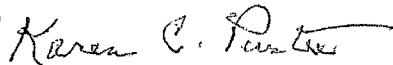
Most of the homes in Troy were built in the early days from when the railroad built the depot in 1892 and a boom town of mostly one or two room simple square houses can be seen in early photographs. Builders only needed to level a spot, put down rough lumber for flooring and put up the walls. Lumber was abundant. Hotels, boarding houses and a few large residences appeared throughout 1920. In the second decade of Troy, the business district was required to build with brick by code as several fires had taken large portions of the town and fire fighting services were not available.

Troy remained a small town through the First World War years with few new homes. When Harry Campbell returned from service in France he decided to build a house like non other in town. In 1927 he chose three lots that had a steep outcrop of basalt. He carved out a garage and small room on Main Street level with three stories above set into the hillside. He designed built-in cabinets, bookcases and niches for his own paintings which he painted directly to the wall.

Harry landscaped the yard creating steps, paths and retaining walls that utilized the foundation stones of a Methodist Church that had once graced the opposite corner.

The distinctive architecture of the Campbell House deserves the recognition of being added to the National Register of Historic Places for its longevity and graceful appeal.

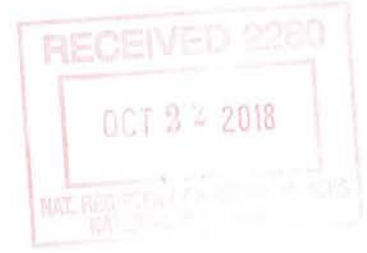
Sincerely,



Karen Purtee  
Secretary  
Latch County Preservation Commission



IDAHO STATE  
**HISTORICAL  
SOCIETY**



October 19, 2018



**C.L. "Butch" Otter**  
Governor of Idaho

**Janet Gallimore**  
Executive Director  
State Historic  
Preservation Officer

**Administration:**  
2205 Old Penitentiary Rd.  
Boise, Idaho 83712  
208.334.2682  
Fax: 208.334.2774

**Idaho State Museum:**  
610 Julia Davis Dr.  
Boise, Idaho 83702  
208.334.2120

**Idaho State Archives  
and State Records  
Center:**  
2205 Old Penitentiary Rd.  
Boise, Idaho 83712  
208.334.2620

**State Historic  
Preservation Office:**  
210 Main St.  
Boise, Idaho 83702  
208.334.3861

**Old Idaho Penitentiary  
and Historic Sites:**  
2445 Old Penitentiary Rd.  
Boise, Idaho 83712  
208.334.2844

HISTORY.IDAHO.GOV

Keeper of the National Register  
National Register of Historic Places  
1849 C Street NW, Mail Stop 7228  
Washington, DC 20240

**RE: National Register of Historic Places Nomination for  
Harry and Fern Campbell House, Troy, Latah Co., Idaho**

Dear Keeper,

The enclosed materials are being submitted for the following nominated property:

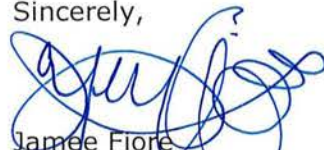
***Harry and Fern Campbell House  
Troy, Latah County, Idaho***

- Original signed signature page of the NRHP nomination form
- CD containing true and correct PDF copy of the nomination – Disk 1
- CD containing photos in TIFF format (16 photos) – Disk 2
- Letters of Support from City/Owner – Disk 1

Additional Comments:

If there are any problems with the records, please don't hesitate to contact me at: [Jamee.fiore@ishs.idaho.gov](mailto:Jamee.fiore@ishs.idaho.gov) or (208) 488-7461.

Sincerely,



Jamee Fiore  
National Register Coordinator