

MOORE BROS. GEN'L. MDSE.

Moore Bros. Gen'l. Mdse.  
1000 N. Main St.  
Columbus, Miss.  
Phone 1-234-5678

Moore Bros. Gen'l. Mdse.  
1000 N. Main St.  
Columbus, Miss.  
Phone 1-234-5678



1 Jan 1988

Holk-Moore Store

14770 ~~Oak~~ SE, Magnolia Springs

Baldwin County, AL

Camera facing ~~SE~~ **SE**

Facade

Devereaux Bemis, photographer



2 Jan. 1988

Moore Store

14770 Oak St., Magnolia Springs  
Baldwin County, AL

Camera facing S

Side elevation

Devereaux Bemis, photographer



3

Jan 1998

Holk Moore Store

14470 Oak St

Magolia Springs, Baldwin City

AL

Camera Facing W

Rear

Devereaux Bemis, photographer



4. Jan. 1998

- Moore Store

14770 Oak St., Magnolia Springs  
Baldwin County, AL

Camera facing NW

General view of rear

Devereaux Bemis, photographer





5 Jan. 1999

Moore Store

14770 Oak Street, Magnolia Springs

Baldwin County, AL

Camera facing W

Side elevation of rear

Devereaux Bemis, photographer



6 Jan. 1998

Moore Stone

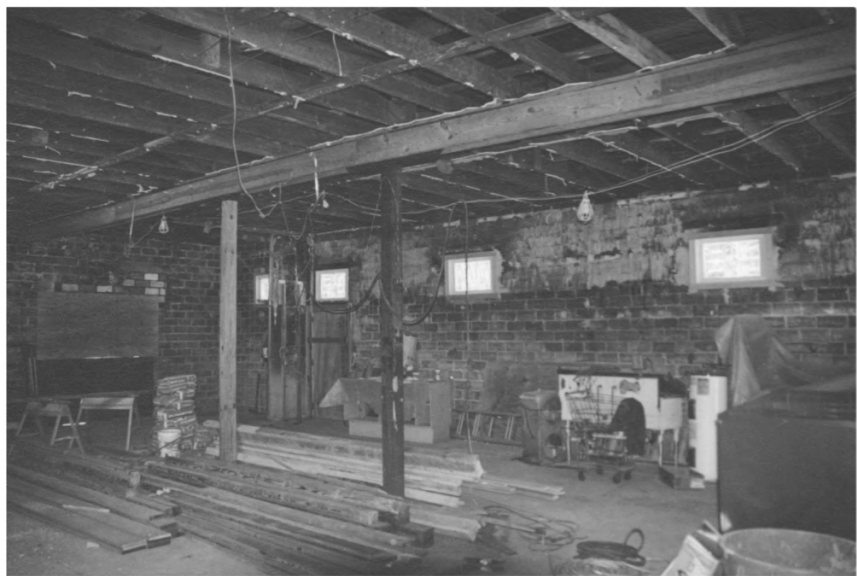
14770 Oak St, Magnolia Springs

Baldwin County, AL

Camera facing SW

Interior toward right near

Devereaux Bemis, photographer



7. Jan. 1998

Winn-Moore Store

14770 Oak Street, Magnolia Springs

Baldwin County, AL

Facing SW

Interior toward right wall + rear

Devereaux Bemis, photographer



8 Jan 1998

Moore Store

14770 Oak St. Magnolia Springs

Baldwin County, AL

Camera facing E

Rear interior wall

Devereaux Bemis, Photographer





9 Jun. 1998

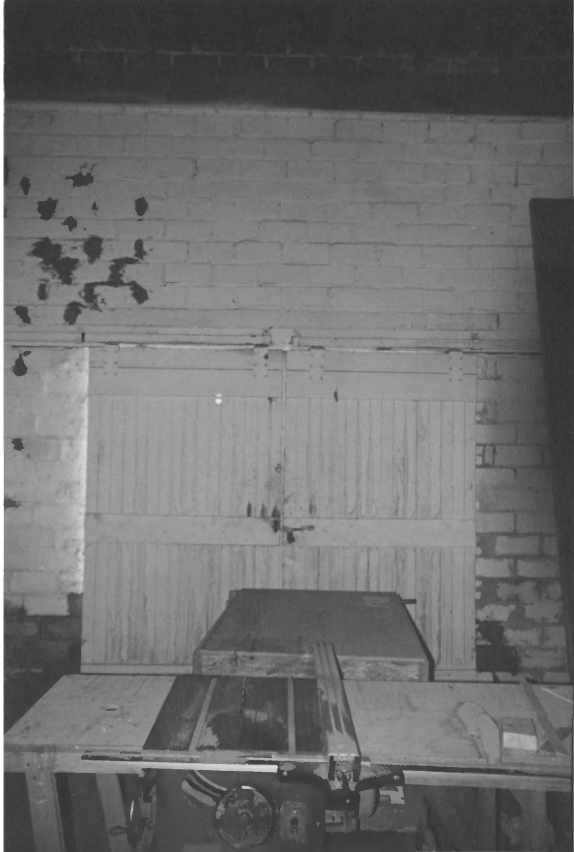
- Moore Stone

14770 Oak St, Magnolia Springs  
Baldwin County, AL

facing west

Interior right wall

Devereaux Bemis photographer



10 Jan 1998

H.K. Moore Store

14770 Oak St., Magnolia Springs

Baldwin County, AL

Camera Facing N

Interior of garage doors

Devereaux x Bemis, Photographer



11 Jan. 1998

Moore Store

14770 Oak St., Magnolia Springs  
Baldwin County, AL

Camera facing W

Detail of ceiling showing fire damage  
Devereaux Bemis, photographer

MOORE BROS  
VILLAGE MARKET

12

Moore Store  
Baldwin Co., AL

T. Binkley

September 2000

AHC

front facade facing south





13 Moore Store  
Baldwin Co., AL  
T. Brinkley  
September 2000

AHC

front facade ; side elevation  
facing southeast



*Jesse's*  
RESTAURANT

14 Moore Store  
Baldwin Co., AL

T. Binkley

September 2000

AHC

Side elevation is side clay tile addition  
facing south



15 Moore Store

Baldwin Co., AL

T. Binkley

September 2000

AHC

side elevation facing east



16 Moore Store  
Baldwin Co., AL  
T. Binkley  
September 2000

AHC  
interior, immediately inside front doors  
facing south





17 Moore Store  
Baldwin Co., AL  
T. Binkley  
September 2000  
AHC

interior, immediately inside front door  
looking at side wall, facing west



18 Moore Store

Baldwin Co., AL

T. Binkley

September 2000

AHC

interior showing side wall and eastern  
side of front, facing northeast



19

Moore Store  
Magnolia Springs, AL

D. Bemis  
May 2001  
Owner  
Front  
S.



20 Moore Store  
Magnolia Springs, AL  
D. Bemis

May 2001  
Owner

W side at back

E





21 Moore Store  
Magnolia Springs, AL

D. Bemis

May 2001

Owner

W side of store, rear of  
hyphen & back porch

N.



22 Moore Street

Magnolia Springs, AL  
D. Bemis

May 2001

Owner

Side entry in side of old Post  
Office  
W section



23 Moore Store  
Magnolia Springs, AL

D. Bemis

May 2001

Owner

Post Office / Restaurant

SE

hyphen