



1. PETA/UMA and SANTA ROSA RAILWAY Power House
2. Sebastopol, California
3. Dennis E. HARRIS
4. June 15, 1990
5. Dennis E. Harris, 1879 Toyon Drive Healdsburg, CA  
95448
6. Facing South-west  
North Gable End + East Facade
7. Photo # I (01/05)

*Dennis E. Harris*



ROGAN SCROCH & ASSOC.  
PROPERTY INVESTMENT AND DEVELOPMENT  
1000 S. 10TH AVENUE

1. Petaluma and Santa Rosa Railway Power House
2. Sebastopol, California
3. Dennis E Harris
4. June 15, 1990
5. Dennis E. Harris, 1879 Toyon Drive, Healdsburg  
Sonoma County
6. Facing North-East  
West Gable End and South Facade  
CA 95448
7. Photo # 2 (01/11)



Petaluma & Santa Rosa Railway Power House  
Sebastopol, CA

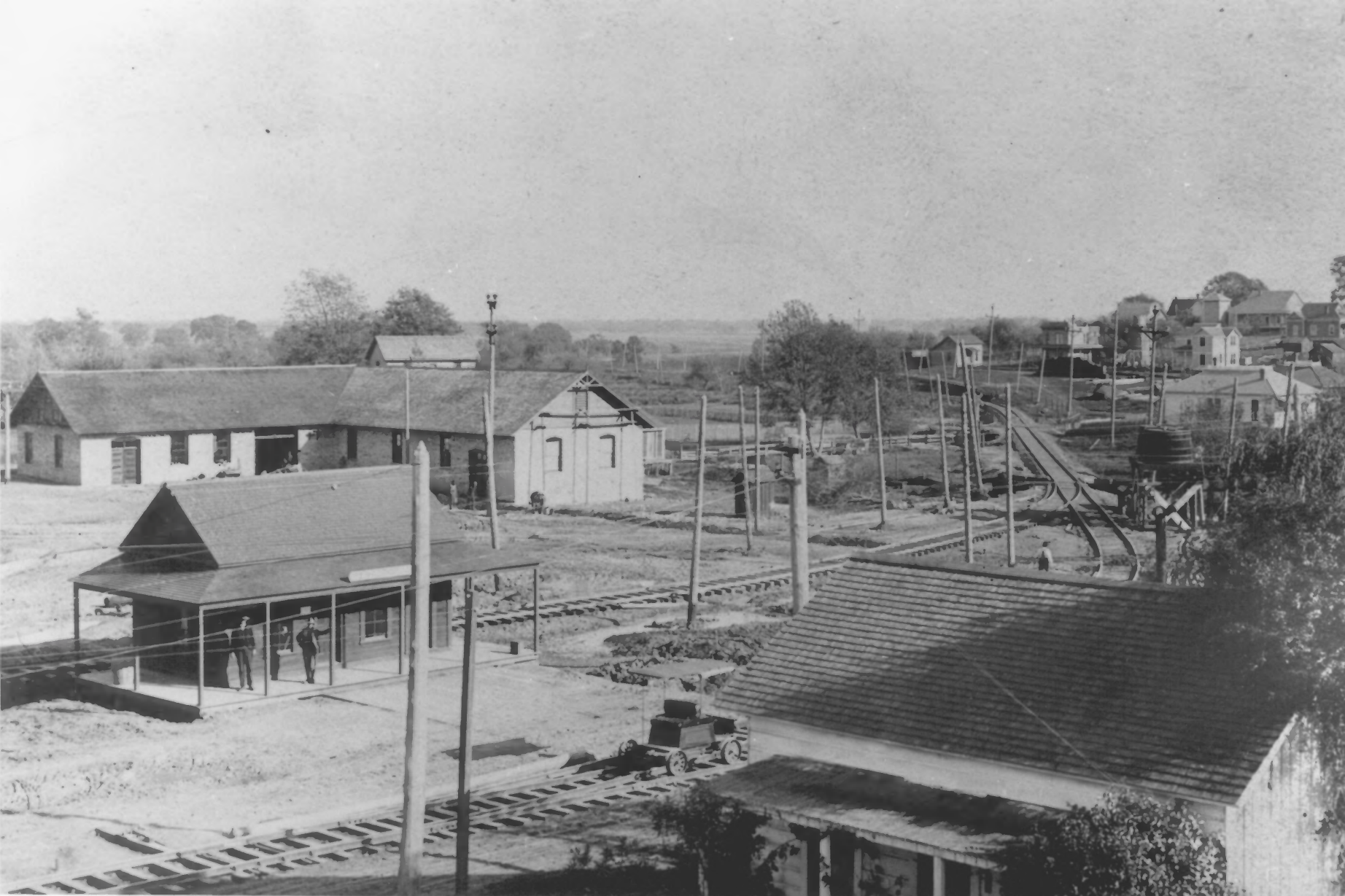
Photographer - Dennis Harris; Date: 6/15/90

Negative 1879 Toyon Tr.  
Healdsburg, CA

Trang South-East

Photo #3

Sonoma  
CA



① Petaluma & Santa Rosa Railway "Powerhouse -  
Hagan Building" at 258 Petaluma and Sebastopol Ca  
Photo dated ④ 1904 from a Real Estate  
Brochure

Dick Hagan

③. UNKNOWN Copy negative by ⑤ Silvenek Photography  
914 Ripley St.  
Santa Rosa CA 95401

6. Facing South-East  
Depot in Foreground, Power House to rear

⑦ Photo #4

January 1904