



Victor Holm cabin

VICTOR HOLM CABIN

KEN-038

Built in 1890

NOV 11 1976

HOLM, VICTOR, CABIN KEN-038

1. Profile, facing West

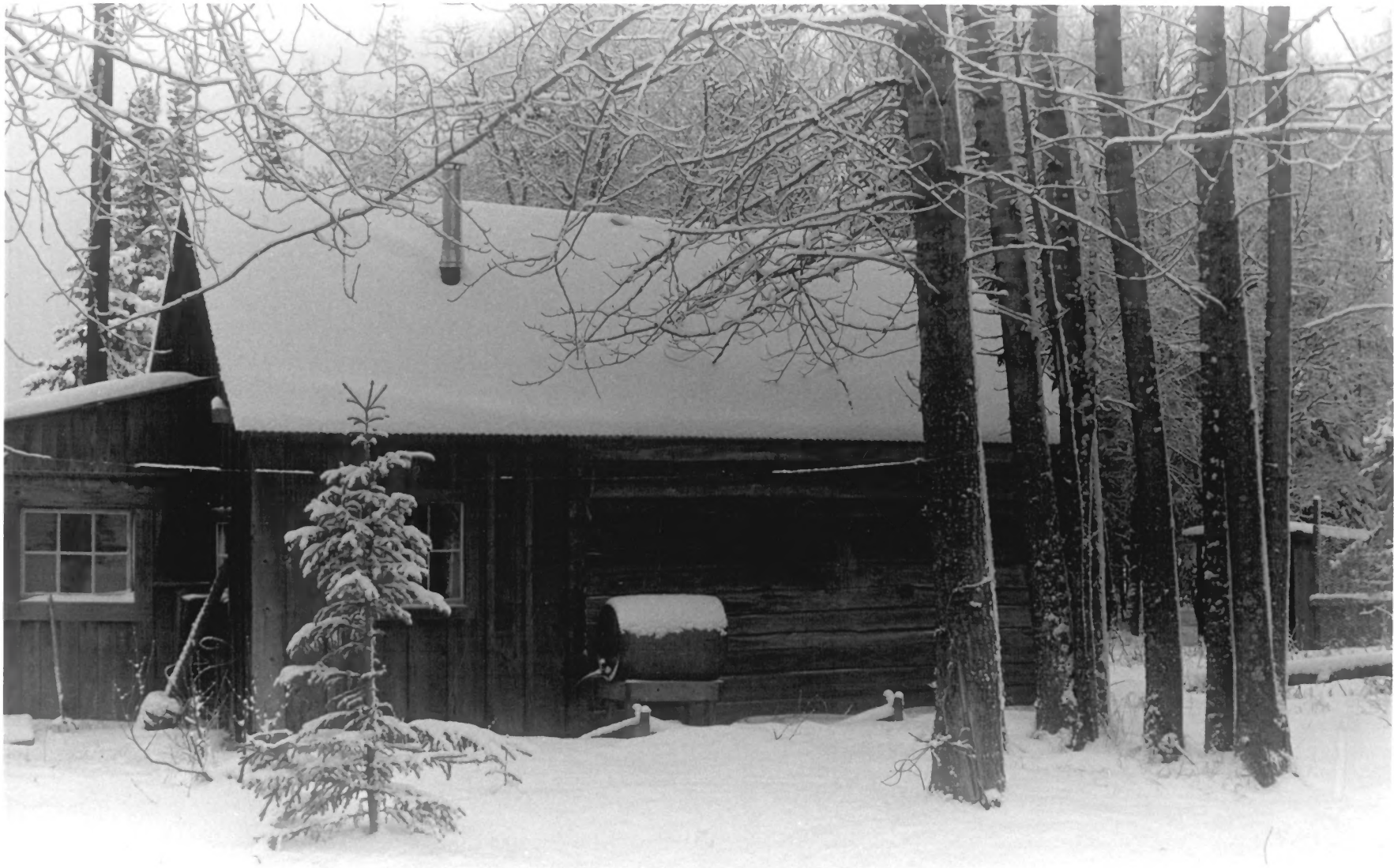
Note corner dovetail logs, center
Photo: C. Lewis, ADP, 1973

NEG: CHAS. LEWIS, BOX 6, COMOE,
AK
ALASKA
99570

APR 13 1977

Kevai Cook Inlet Div. AK

PROPERTY OF THE NATIONAL REGISTER



Kenai-Cook Inlet Area

HOLM, VICTOR, CABIN KEN-038

2. Oposite site facing East;

Slad dog kennel and pens at right

Photo: Lt. Judith Benson, Corps of
Engineers, Alaska Dist. Anchorage

Feb. 13, 1974

2 1/2 APR 13 1977

NOV 11 1976

silaf (Cohoe)

13 Feb. 1974 *AK*

Corps of Engineers

Lt. Judith E. Benson

Facing East

*Slad Dog Kennel + Pens
at Right*