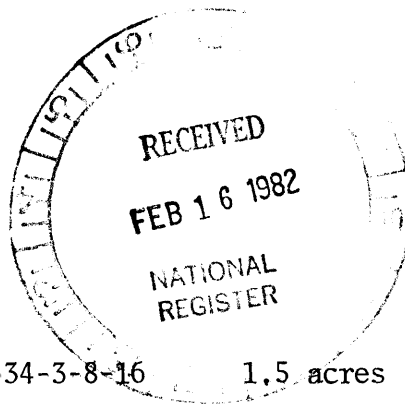


23. PHILLIP SCHOPPERT HOUSE
230 Prairie Street

Mr. and Mrs. George Cotton
230 Prairie Street
Eutaw, Alabama 35462



Lot #111 Tax Map: 35-18-08-34-3-8-16 1.5 acres (117.2' Prairie x 567')

Latitude: 32° 50' 13"

Longitude: 87° 53' 5"

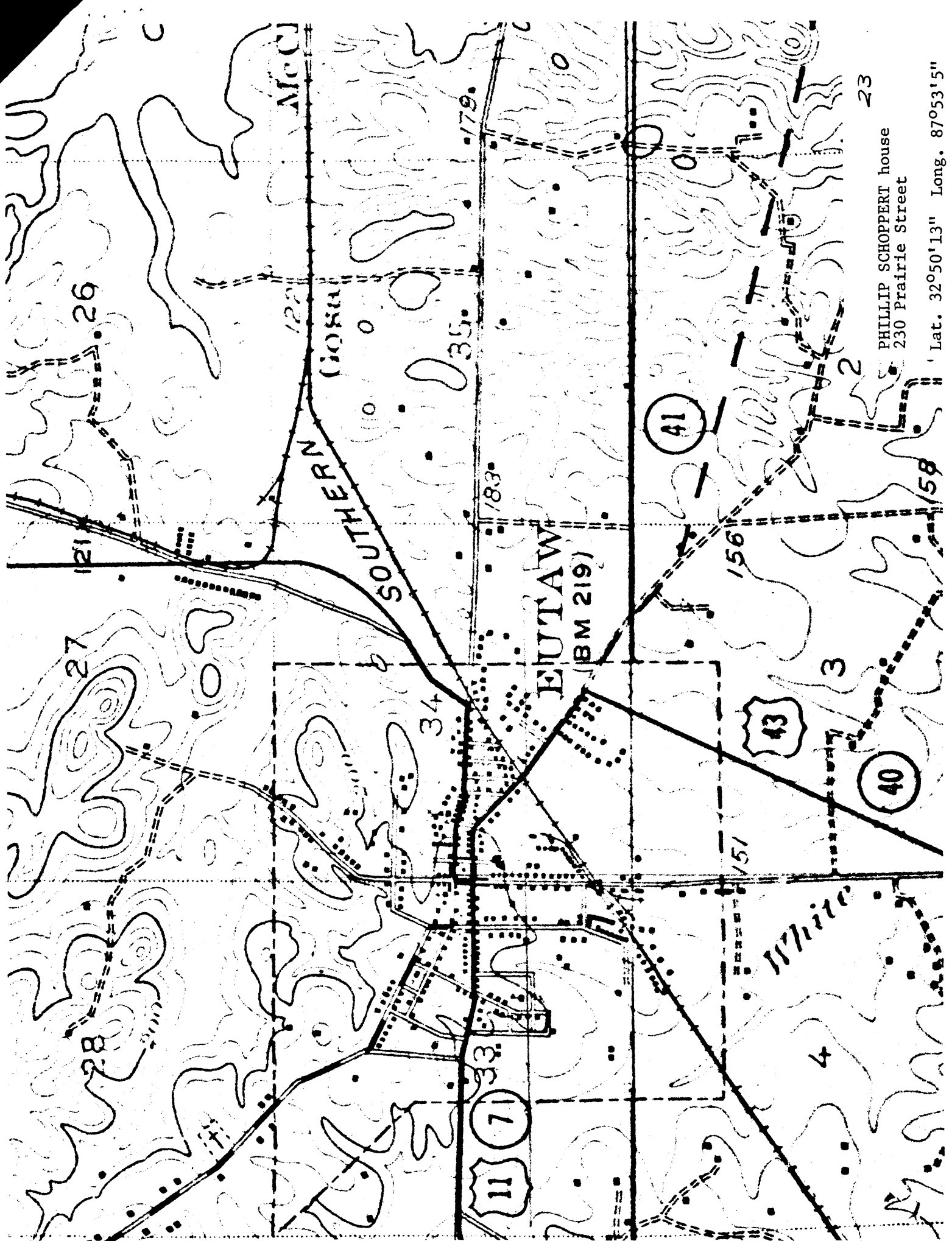
c. 1856

Architect/builder: Phillip Schoppert

late 19th century - portico, window sash, altered, upper central window changed to door, interior stair modifications.

This is one of two hipped-roof variants of the I-house and reflects a lingering Georgian influence in Eutaw. A one-story lean to extension across the rear adheres to a conventional I-house formula. In combination with the hipped configuration of the roof, the extension causes the house to recall in profile one of the earliest of seaboard prototypes: the Ludwell Paradise house in Williamsburg. Additionally, it is the work of a particular builder, Phillip Schoppert, who constructed it for his own use. Schoppert was a native of South Carolina.

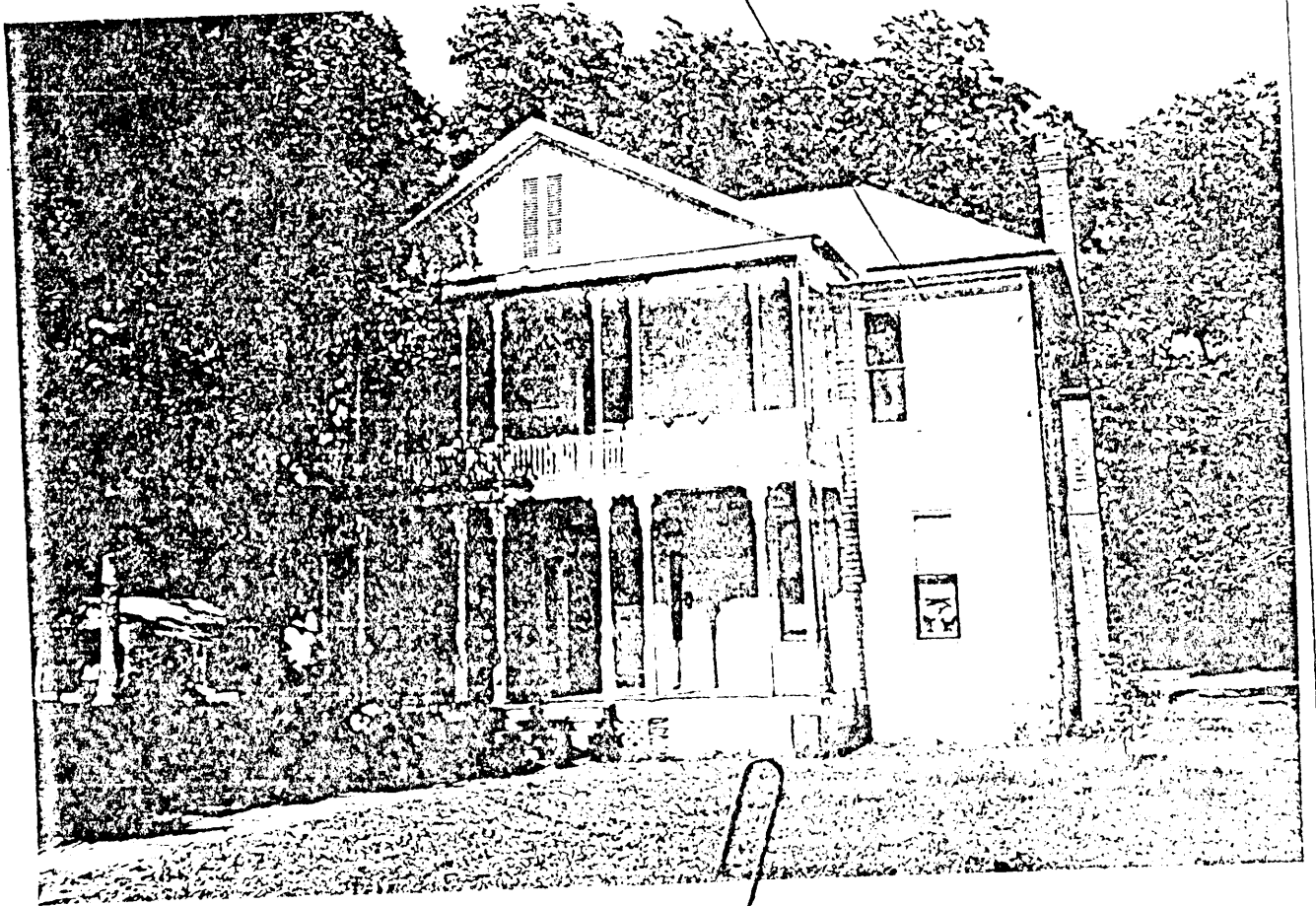
DESCRIPTION: The front part of the Phillip Schoppert house is two storied and follows the Grassdale plan, but has a hipped roof. The chimneys are strictly medieval - not merely "shouldered" like the chimneys of many of the earlier houses, but they are given three setbacks on each side, the lowest and least being at the base. Surely this treatment was brought from South Carolina by the builder. Also unusual in Western Alabama are the narrow windows, now fitted with replacement sashes of single panes, whose measurements indicate that of standard-size panes they would have contained 8 x 10" lights arranged three wide and seven tall. A pair of this species survives in the north wall of the Littleberry Pippen house (#9) at the southwest corner of Springfield and Pippen Streets, matching the height of the 19 paned sash windows in front. In opposition to the narrow fenestration, the doorway of the Schoppert house is unusually wide, containing a pair of full sized doors, and relatively large panes of glass in the sidelights and transom. They are later, probably post-bellum, modifications.



PHILLIP SCHOPPERT house
230 Prairie Street

Lat. 32°50'13" Long. 87°53'15"

RECEIVED
FEB 16 1982
NATIONAL
REGISTER



RECEIVED
FEB 16 1982
NATIONAL
REGISTER

