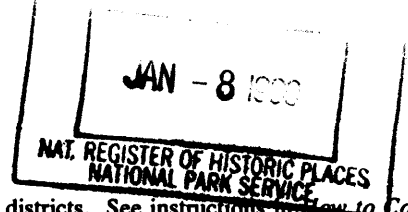


United States Department of the Interior
National Park Service

National Register of Historic Places
Registration Form

130



This form is for use in nominating or requesting determinations for individual properties and districts. See instructions in *How to Complete the National Register of Historic Places Registration Form* (National Register Bulletin 16A). Complete each item by marking "x" on the appropriate line or by entering the information requested. If an item does not apply to the property being documented, enter "N/A" for "not applicable." For functions, architectural classification, materials, and areas of significance, enter only categories and subcategories from the instructions. Place additional entries and narrative items on continuation sheets (NPS Form 10-900a). Use a typewriter, word processor, or computer, to complete all items.

1. Name of Property

historic name LOUDEN, R. R. AND ANTOINETTE, HOUSE

other names/site number Thomas A. and Dorothy C. Louden House

2. Location

street & number 905 East Adams Avenue N/A not for publication

city or town Fairfield N/A vicinity

state Iowa code IA county Jefferson code 101 zip code 52556

3. State/Federal Agency Certification

As the designated authority under the National Historic Preservation Act, as amended, I hereby certify that this nomination request for determination of eligibility) meets the documentation standards for registering properties in the National Register of Historic Places and meets the procedural and professional requirements set forth in 36 CFR Part 60. In my opinion, the property meets does not meet) the National Register criteria. I recommend that this property be considered significant (nationally statewide locally). (See continuation sheet for additional comments.)

Signature of certifying official/Title *Patricia A. ...*
STATE HISTORICAL SOCIETY OF IOWA

Date 12-29-98

State or Federal agency and bureau

In my opinion, the property (meets does not meet) the National Register criteria. (See continuation sheet for additional comments.)

Signature of certifying official/Title

Date

State or Federal agency and bureau

4. National Park Service Certification

I hereby certify that the property is :

- entered in the National Register. See continuation sheet.
- determined eligible for the National Register See continuation sheet
- determined not eligible for the National Register
- removed from the National Register.
- Other, (Explain)

Signature of Keeper

Edson W. Beall

Date of Action

2/22/99

R. R. and Antoinette Louden House
Name of Property

Jefferson County, Iowa
County and State

5. Classification

Ownership of Property
(Check as many lines as apply)

Category of Property
(Check only one line)

Number of Resources within Property
(Do not include previously listed resources in the count.)

- private
- public-local
- public-State
- public-Federal

- building(s)
- district
- site
- structure
- object

Contributing	Noncontributing	
1	0	buildings
		sites
		structures
		objects
1	0	Total

Name of related multiple property listing
(Enter "N/A" if property is not part of a multiple property listing)

Number of contributing resources previously listed in the National Register

Louden Machinery Company, Fairfield, Iowa

0

6. Function or Use

Historic Functions
(Enter categories from instructions)

Current Functions
(Enter categories from instructions)

DOMESTIC/single dwelling

DOMESTIC/single dwelling

7. Description

Architectural Classification
(Enter categories from instructions)

Materials
(Enter categories from instructions)

LATE 19TH AND 20TH CENTURY REVIVALS/
Colonial Revival

foundation Concrete
walls Brick
Wood
roof Asphalt
other Glass

Narrative Description

(Describe the historic and current condition of the property on one or more continuation sheets.)

R. R. and Antoinette Loudon House
Name of Property

Jefferson County, Iowa
County and State

8. Statement of Significance

Applicable National Register Criteria
(Mark "x" on one or more lines for the criteria qualifying the property for National Register listing)

- A** Property is associated with events that have made a significant contribution to the broad patterns of our history.
- B** Property is associated with the lives of persons significant in our past.
- C** Property embodies the distinctive characteristics of a type, period, or method of construction or represents the work of a master, or possesses high artistic values, or represents a significant and distinguishable entity whose components lack individual distinction.
- D** Property has yielded, or is likely to yield, information important in prehistory or history.

Criteria Considerations
(Mark "x" on all the lines that apply)
Property is:

- A** owned by a religious institution or used for religious purposes.
- B** removed from its original location.
- C** a birthplace or grave.
- D** a cemetery.
- E** a reconstructed building, object, or structure.
- F** a commemorative property.
- G** less than 50 years of age or achieved significance within the past 50 years.

Areas of Significance
(Enter categories from instructions)

INDUSTRY

Period of Significance

1925-1948

Significant Dates

1925

Significant Person
(Complete if Criterion B is marked above)

N/A

Cultural Affiliation

Architect/Builder
C. Eugene Fleming

Narrative Statement of Significance - (Explain the significance of the property on one or more continuation sheets)

9. Major Bibliography References

Bibliography

(Cite the books, articles and other sources used in preparing this form on one or more continuation sheets.)

Previous documentation on file (NPS):

- previous determination of individual listing (36 CFR 67) has been requested
- previously listed in the National Register
- previously determined eligible by the National Record
- designated a National Historic Landmark
- recorded by American Buildings Survey # _____
- recorded by Historic American Engineering Record # _____

Primary location of additional data:

- State Historical Preservation Office
- Other State agency
- Federal agency
- Local government
- University
- Other

Name of repository

R. R. and Antoinette Louden House
Name of Property

Jefferson County, Iowa
County and State

10. Geographical Data

Acreage of Property Less than one acre

UTM References

(Place additional UTM references on a continuation sheet.)

1 | 15 | 588180 | 4539605 |

Zone Easting Northing

2 | --- | ----- | ----- |

Zone Easting Northing

3 | --- | ----- | ----- |

Zone Easting Northing

4 | --- | ----- | ----- |

Verbal Boundary Description

(Describe the boundaries of the property on a continuation sheet)

Boundary Justification

(Explain why the boundaries were selected on a continuation sheet)

11. Form Prepared By

name/title William C. Page, Public Historian; Joanne R. Walroth, Project Associate

organization Jefferson County Historic Preservation Commission date January 15, 1998

street & number 520 East Sheridan Avenue (Page) telephone 515-243-5740 (Page)

city or town Des Moines state Iowa zip code 50313-5017

Additional Documentation

Submit the following items with the completed form:

Continuation Sheets

Maps

A **USGS map** (7.5 or 15 minute series) indicating the property's location.

A **Sketch map** for historic districts and properties having large acreage or numerous resources.

Photographs - Representative **black and white photographs** of the property.

Additional items - (Check with the SHPO or FPO for any additional items)

Property Owner

(Complete this item at the request of SHPO or FPO.)

name Thomas A. and Dorothy C. Louden

street & number 905 East Adams Avenue telephone 515-472-5807

city or town Fairfield state Iowa zip code 52556

Paperwork Reduction Act Statement: This information is being collected for applications to the National Register of Historic Places to nominate properties for listing or determine eligibility for listing, to list properties, and to amend existing listings. Response to this request is required to obtain a benefit in accordance with the National Historic Preservation act, as amended (16 U.S.C. 470 et seq.).

Estimated Burden Statement: Public reporting burden for this form is estimated to average 18.1 hours per response including time for reviewing instructions, gathering and maintaining data, and completing and reviewing the form. Direct comments regarding this burden estimate or any aspect of this form to the Chief, Administrative Services Division, National Park Service, P.O. Box 37127, Washington, DC 20013-7127; and the Office of Management and Budget, Paperwork Reductions Projects (1024-0018), Washington, DC 20503.

United States Department of the Interior
National Park Service

NATIONAL REGISTER OF HISTORIC PLACES CONTINUATION SHEET

Section number 7 Page 1

CFN-259-1116

R. R. and Antoinette Loudon House, Jefferson County, Iowa.

GENERAL DESCRIPTION

Completed in 1925, the R. R. and Antoinette Loudon House is a 2-1/2 story, brick veneer, single-family dwelling, covered with a side-gable roof. It features an outside wall chimney on the east elevation, a 1-story solarium also on the east elevation, and a 1-story porch on the facade. A rear addition to the building was constructed in 1956. A 2-bay, attached garage, built in the 1980s, is attached to the north elevation of that addition.

HOUSE

The footprint of this house is a rectangle measuring approximately 38' x 36' (width by depth). A facade porch stands on its south elevation. It is covered with a front gable roof supported by classically-inspired columns. A 1-story solarium is situated on the east elevation of the main block. An addition is situated at the rear of this main block. Constructed in 1956, it measures 38' x 17' and is 1-story in height. A 2-bay garage is attached to the north elevation of this rear addition. Because the main block of the house masks the rear addition from the street and because the facade line of the garage is situated some 38' behind that of the main block, these later additions to the building are not visually intrusive.

The main block of this building rests on a poured concrete foundation. The building features wood framing veneered in a red-colored brick. The main block is covered with a side gable roof of asphalt shingles.

The facade is symmetrically conceived with five bays on the first floor and three bays on the second floor. The front entrance and porch are situated at the center of the first floor.

The house features a variety of window treatments. Fenestration generally consists of double-hung sash with multi-panes in the upper sash window and one pane in the lower sash. For example, the windows on the first floor of the facade feature 12/1 configurations. Pediments are situated above the first floor windows of the facade worked in brick and cast concrete. These details call further attention to the building's fenestration.

In the interior, the first floor and second floor of the main block each contains a total area of approximately 988 square feet. Floors on the first floor are of softwood, while the floors on the second floor are of hardwood. The rear addition to the house includes a family room and a kitchen. The walls of the main block are plaster, while those of the rear addition are drywall. The basement, which is full, features a concrete floor and unfinished walls. The house also features an unfinished attic.

Some alterations have been made to the R. R. and Antoinette Loudon House. Following Antoinette Loudon's decision to leave the house and move into an apartment, the present owner constructed a rear addition of wood frame to the building in 1956. Another alteration is the present attached garage. In the early 1980s, this frame, double-bay garage replaced the original single-bay, brick, attached garage,

United States Department of the Interior
National Park Service

NATIONAL REGISTER OF HISTORIC PLACES CONTINUATION SHEET

Section number 7 Page 2

CFN-259-1116

R. R. and Antoinette Loudon House, Jefferson County, Iowa.

which had been built in 1925 at the same time as the house. The new garage was designed to minimize its visual impact on the historic building. The facade of the garage was deeply set back from the facade line of the house and brick of a similar color and texture were used to frame the overhead door.

The R. R. and Antoinette Loudon House is in fine condition.

SITE

This property is situated on Lot 4 and Lot 5 of the Highland addition to the City of Fairfield, including part of the alley. These parcels of land are located near the northeast corner of the intersection of East Adams Avenue and South Highland Street. The house stands on the north side of East Adams Avenue and faces south. The Arthur C. and Maud Loudon House is located nearby at 201 South Highland Street. This site is just around the corner. R. R. Loudon was a cousin of Art Loudon.

Both the house and its surrounding neighborhood were never pictured on fire insurance maps.

The rear of this property abuts a natural water-feature known as Pumphrey's Pond. The Pumphrey family owned most of this land in the mid-Nineteenth Century. This water-feature and its surrounding land was never platted and has been developed over the year's as a private park. It provides a visual focus and amenity for houses built around it on East Adams Street, South Highland Street, and East Burlington Avenue.

The land in the immediate area around the Loudon House is level. The Loudon property has been improved with plantings of trees and shrubs.

East Adams Avenue is situated in the southeastern quadrant of Fairfield. East Burlington Avenue, the major east-west artery through Fairfield and the route of U.S. Highway 34 through the community, is situated one block to the north.

United States Department of the Interior
National Park Service

NATIONAL REGISTER OF HISTORIC PLACES
CONTINUATION SHEET

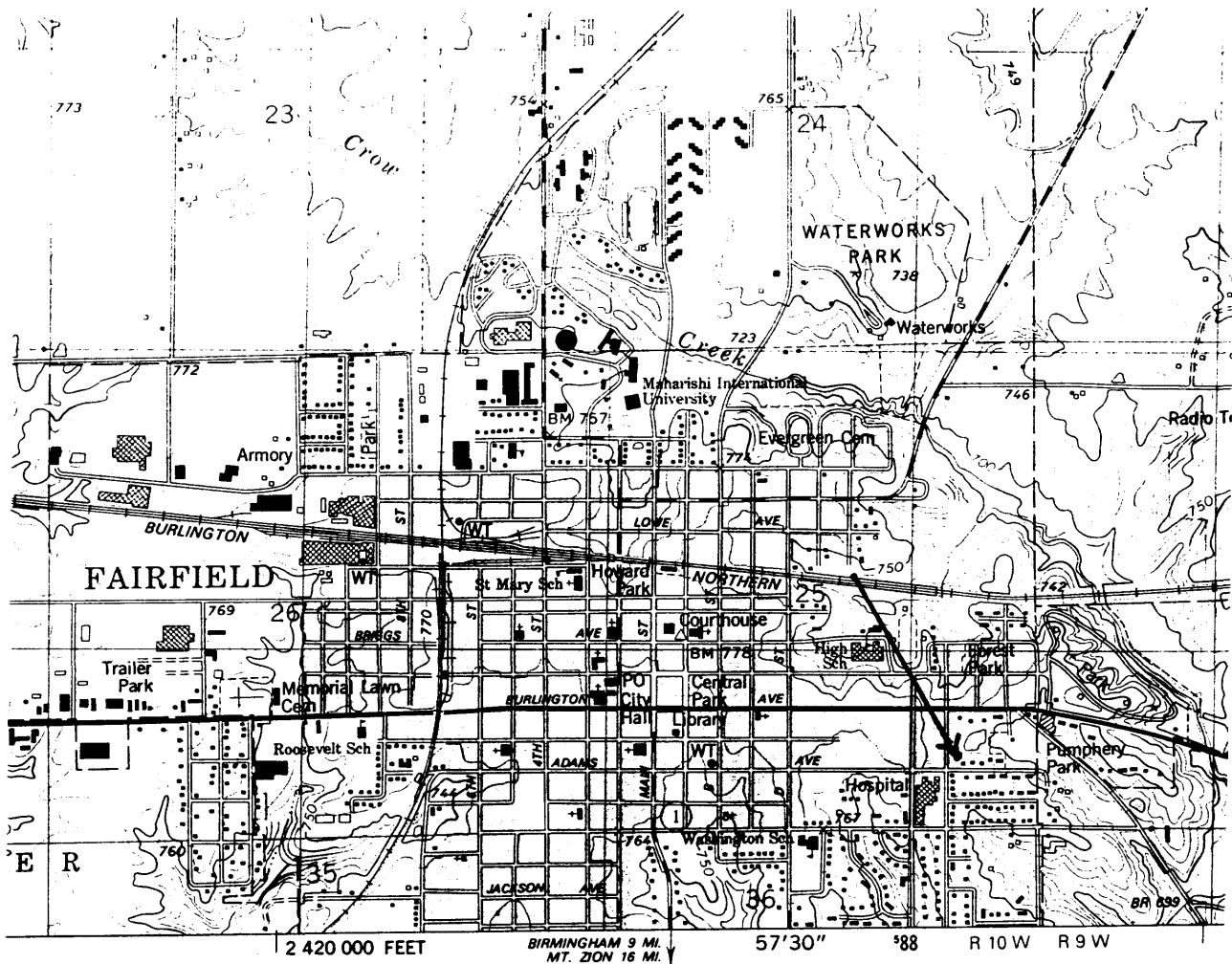
Section number 7 Page 3

CFN-259-1116

R. R. and Antoinette Louden House, Jefferson County, Iowa.

SITE MAP

ARROW LOCATES PROPERTY



Source: U.S.G.S. Map (7.5 Minute Series), Fairfield North Quadrangle, 1980.

United States Department of the Interior
National Park Service

NATIONAL REGISTER OF HISTORIC PLACES CONTINUATION SHEET

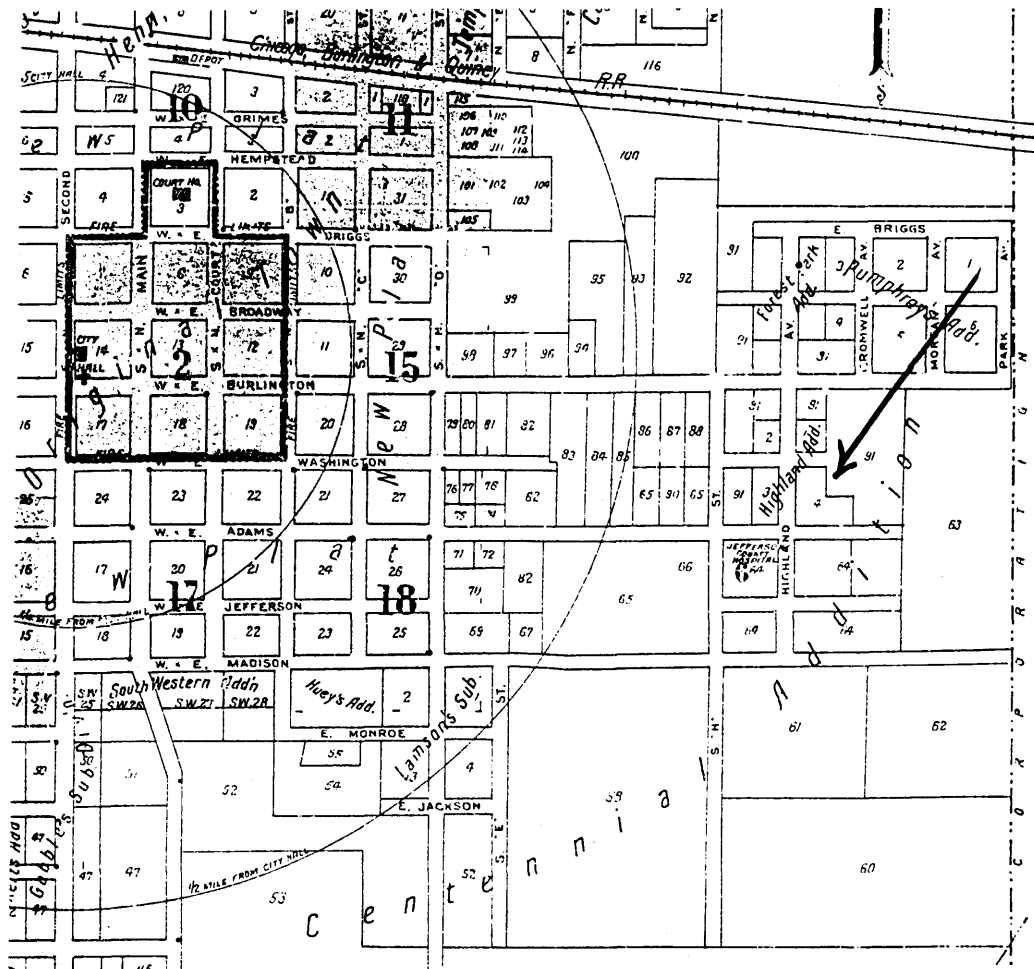
Section number 7 Page 4

CFN-259-1116

R. R. and Antoinette Louden House, Jefferson County, Iowa.

1927 VICINITY MAP

ARROW SHOWS LOCATION OF PROPERTY



United States Department of the Interior
National Park Service

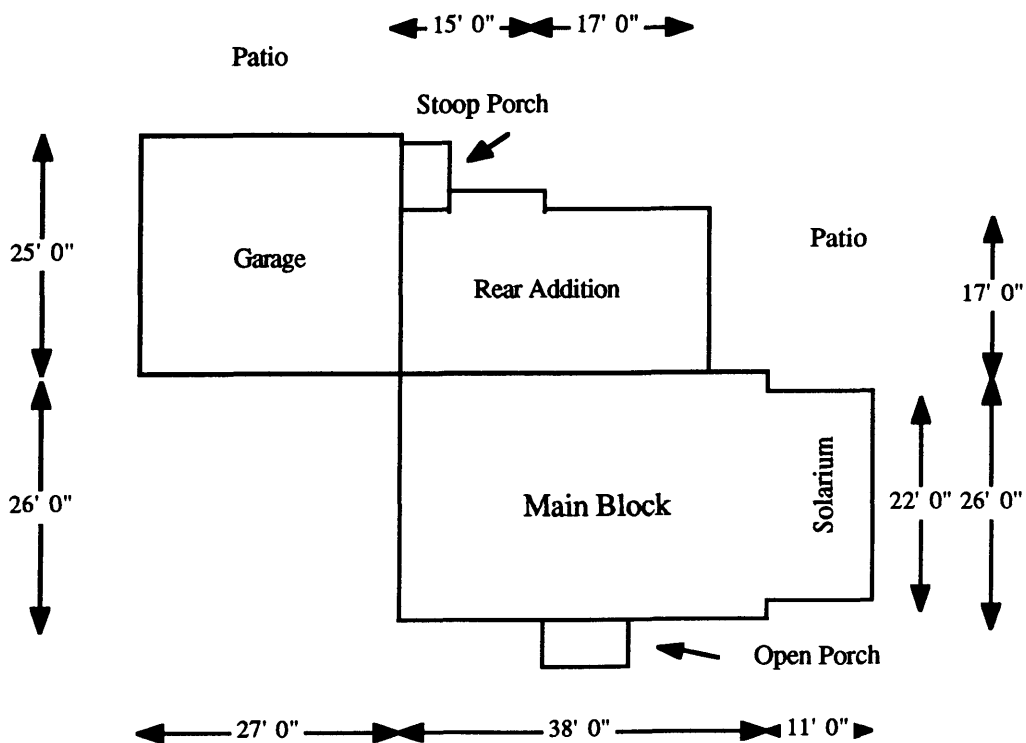
NATIONAL REGISTER OF HISTORIC PLACES CONTINUATION SHEET

Section number 7 Page 5

CFN-259-1116

R. R. and Antoinette Louden House, Jefferson County, Iowa.

HOUSE SKETCH PLAN



Source: Jefferson County Assessor Office measurements and William C. Page.

**United States Department of the Interior
National Park Service**

**NATIONAL REGISTER OF HISTORIC PLACES
CONTINUATION SHEET**

Section number 8 Page 6

CFN-259-1116

R. R. and Antoinette Loudon House, Jefferson County, Iowa.

SUMMARY OF SIGNIFICANCE

Built in 1925 as a single-family dwelling, the R. R. and Antoinette Loudon House is historically significant because it calls attention to "Roy" Loudon (as he was usually known) and his career with the Loudon Machinery Company. Loudon's employment with the firm began in 1913. It included a highly successful service as the manager of the company's advertising department in the 1920s and as the corporation's secretary from 1931 until his death in 1951. Roy's career also illustrates the second generation of the Loudon family entering the management echelons of the Loudon Machinery Company.

The period of significance, under Criterion A, for the R. R. and Antoinette Loudon House is 1925 through 1948. This period reflects the time in which Roy served the Loudon Machinery Company and lived in this house. The 1948 date reflects the National Register's 50-year requirement. This period of significance should be expanded until it reaches the year of Roy's death, which occurred in 1951.

The property contains one resource for this nomination--the house and its attached garage.

INDUSTRY

The R. R. and Antoinette Loudon House is significant, under Criterion A, because it calls attention to Robert Roy Loudon (1890-1951). "Roy" was the son of Thomas and Jennie Loudon and a nephew of William Loudon and R. B. Loudon. Roy's employment with the Loudon Machinery Company began in 1913 and continued throughout his life. His career illustrates the entrance of the second generation of Loudons into the company's management. In 1931 Roy was appointed Secretary of the Loudon Machinery Company, an office he held until his death.

Roy Loudon's service to the Loudon Machinery Company began in 1913. Upon graduation from Parsons College in Fairfield, he worked in the firm's drafting department for several years. From 1917 to 1931, he served as the manager of the firm's Advertising Department. Advertising played a key role in Loudon's success, and the department flourished under Roy's management. The company issued on a semi-regular basis a series of quality-designed catalogs during the 1910s and 1920s. These and other company publications were instrumental in the firm's national advertising campaigns. In addition to the catalogs, the Advertising Department produced brochures, newspaper advertisements, "dealers' helps" (printed materials, which provided effective sales techniques for local retailers), as well as sales displays for trade fairs, expositions, and local retail operations. Advertising for machinery is not easy because it requires visual appeal as well as precise information about specification and function. The cover document for this nomination contains numerous examples of advertisements produced by Roy Loudon's department. The quality of these materials speak for themselves. (See Chapter II of the cover document for more information about the Advertising Department.)

During World War II, Roy Loudon headed the industrial conveying division at the Fairfield factory. (Thomas A. Loudon informant interview) That division was supplying major U.S. Government

**United States Department of the Interior
National Park Service**

**NATIONAL REGISTER OF HISTORIC PLACES
CONTINUATION SHEET**

Section number 8 Page 7

CFN-259-1116

R. R. and Antoinette Loudon House, Jefferson County, Iowa.

contractors in the nation's war effort at that time, and the responsibility of managing the division demonstrates the trust in which Loudon management held him and his abilities as an executive.

Roy Loudon contributed to public service in Iowa. At the time of his death in 1951, Loudon was a member of the State Board of Education. According to his obituary:

Loudon's influence as an industrialist, educator and civic worker was not confined to his own community, but was felt in the entire state. He had been a member of the State Board of Education since 1939 and was serving his second term which was due to expire June 30 this year. ("Roy Loudon, 60, Dies")

Loudon's other civic activities included service as a trustee of Parsons College continuously from 1921 to 1951, member of the board of trustees of the Fairfield Public Library, past-treasurer of the Iowa State Ad club, long-time member of the Rotary Club of Fairfield and governor of the club's 132nd district in 1931-1932, and sometime president of the Fairfield Chamber of Commerce. (*Ibid.*)

Thomas A. Loudon (1919-present), the only child of Roy and Antoinette, later entered employment with the Loudon Machinery Company and became its general legal counsel in the 1940s. He and Dorothy C. Loudon, his wife, live today in the R. R. and Antoinette Loudon House.

ARCHITECTURE

Constructed in 1925, the R. R. and Antoinette Loudon House was designed by C. Eugene Fleming, a member of the Architectural Department of the Loudon Machinery Company. Although Fleming was never registered as an architect by the State of Iowa, this was not uncommon among architects of his generation. The Loudon House illustrates Fleming's considerable architectural skills and the influence of Colonial Revival styling on its design.

C. Eugene Fleming

Charles Eugene Fleming (known as "Gene") came from a family involved in the construction business. He worked in the Architectural Department of the Loudon Machinery Company during the 1920s and the 1930s before relocating from Fairfield. As a side-line to this employment, Fleming also designed houses. The fact that Roy and Antoinette Loudon--prominent members of the Loudon family and the Loudon firm--selected Fleming to design their own residence attests to their respect for his professional ability. (Thomas A. Loudon informant interview) Fleming's name last appears in Fairfield city directories in 1937.

Fleming designed a number of single-family dwellings in Fairfield in addition to the Loudon House. He worked under the influence of several architectural styles. Flemings local designs include the

**United States Department of the Interior
National Park Service**

**NATIONAL REGISTER OF HISTORIC PLACES
CONTINUATION SHEET**

Section number 8 Page 8

CFN-259-1116

R. R. and Antoinette Loudon House, Jefferson County, Iowa.

Gobble House, a Colonial Revival example at 704 South Main Street, and the Jesse E. Fleming House, a Tudor Revival example at 505 East Burlington Avenue.

In addition to these prominent dwellings, Fleming also designed a series of smaller single-family houses. Jesse E. Fleming, his father, built them. Jesse was a building contractor and worked in conjunction with a partner under the name Knowles and Fleming. These houses cluster on Forest Drive and North Park Street in Fairfield and show the influences of Tudor Revival and Neo-Colonial Revival styling on their design.

Additional information about Gene Fleming's career might come to light as more people become aware of his work.

Colonial Revival

The R. R. and Antoinette Loudon House illustrates the influence of Colonial Revival styling on its design. The building provides a good, local example of the side-gabled roof subtype of that style, as defined by Virginia and Lee McAlester. (McAlester:322 and 332)

Diagnostic characteristics of this influence include the symmetrically designed facade with its centrally situated front door, 12/1 double-hung sash windows, front door flanked by sidelights, corner returns at the roof, and the pediments above the first floor windows of the facade worked in brick and cast concrete. An entrance portico provides a focal point for the building's facade. It features two wood columns supporting a pedimented front gable roof. The employment of brick for the exterior walls of this building lends the feeling of permanence to this building and distinguishes it from other examples of Colonial Revival dwellings in Fairfield constructed of wood.

REPRESENTATION IN OTHER CULTURAL RESOURCES SURVEYS

This building was surveyed on Iowa Site Inventory Form #51-012-216 in 1981 as part of an architectural survey of Fairfield, Iowa, by the Area XV Regional Planning Commission. That survey evaluated this resource, under National Register Criterion C, as an "C" resource. According to that survey, Category C sites lacked sufficient architectural significance for individual National Register eligibility but contributing to a potential historic district, in this case the Adams/Highland Historic District. These evaluations were made largely on stylistic grounds, classifying the building as Colonial Revival-influenced. Since this survey, further information about the building's architectural history, as discussed above, has come to light, placing it within a broader context.

This house was also surveyed in 1996 as part of the "Louden Machinery Company, Fairfield, Iowa" hybrid reconnaissance and intensive surveys of that historic context within Jefferson County, Iowa. As one resource within that survey, this house was evaluated as individually eligible, under Criteria A and C, for nomination to the National Register of Historic Places. The State Historical Society of Iowa was informed of this determination through the survey report and an Iowa Site Inventory Form.

United States Department of the Interior
National Park Service

NATIONAL REGISTER OF HISTORIC PLACES
CONTINUATION SHEET

Section number 8 Page 9

CFN-259-1116

R. R. and Antoinette Loudon House, Jefferson County, Iowa.

POTENTIAL FOR HISTORICAL ARCHAEOLOGY

Although the site's potential for historic archaeology is, as yet, unevaluated, living memory documents the fact that no other resources have stood on this site. The land remained unimproved until the Loudens constructed this building.

United States Department of the Interior
National Park Service

**NATIONAL REGISTER OF HISTORIC PLACES
CONTINUATION SHEET**

Section number 8 Page 10

CPN-259-1116

R. R. and Antoinette Louden House, Jefferson County, Iowa.

R. R. AND ANTOINETTE LOUDEN HOUSE

HISTORIC PHOTOGRAPHS



The top snapshot was taken in December 1938 and is looking to the northwest.
The bottom snapshot was taken probably in the summer of 1942. It looks to the northeast.
The car in the driveway is either a 1940 Buick or a 1941 Pontiac.

Source: Courtesy of Thomas A. Louden, Fairfield, Iowa.

United States Department of the Interior
National Park Service

NATIONAL REGISTER OF HISTORIC PLACES CONTINUATION SHEET

Section number 9 Page 11

CFN-259-1116

R. R. and Antoinette Loudon House, Jefferson County, Iowa.

BIBLIOGRAPHY

Please refer to Section I of the Multiple Property Documentation Form for complete bibliography.

PRIMARY

Sanborn Fire Insurance Maps for Fairfield, Iowa.
1885, 1892, 1899, 1907, 1913, and 1927.

"Roy Loudon, 60, Dies Suddenly in Des Moines"; Undated and unreferenced Fairfield newspaper obituary; *Old Scrapbooks of Jefferson County, Iowa*; Fairfield Public Library, Fairfield, Iowa.

SECONDARY

Area XV Regional Planning Commission; Architectural Survey of Fairfield, Iowa; 1981.
Report on file at the State Historical Society of Iowa, Des Moines.

Jefferson County Assessor's Office, Assessor's Property Record Card.

McAlester, Virginia and Lee; *A Field Guide to American Houses*; New York: Alfred A. Knopf; 1984.

Page, William C., and Joanne R. Walroth; *The Loudon Machinery Company, Fairfield, Iowa*; Intensive cultural resources report prepared for and on file at the Jefferson County Historic Preservation Commission and State Historical Society of Iowa, Des Moines; 1996.

ORAL HISTORY

Gobble, Lee.; Oral informant interview with William C. Page, February 27, 1998.

McCoid, Roberta Loudon; Oral informant interview with William C. Page, January 22, 1998.

Loudon, Thomas A.; Oral informant interview with William C. Page, April 12, 1996.

United States Department of the Interior
National Park Service

NATIONAL REGISTER OF HISTORIC PLACES
CONTINUATION SHEET

Section number 10 Page 12

CFN-259-1116

R. R. and Antoinette Louden House, Jefferson County, Iowa.

VERBAL BOUNDARY DESCRIPTION

Lot 4, Lot 5, and alley in the Highland Addition to the City of Fairfield, Iowa.

BOUNDARY JUSTIFICATION

Contains all land associated historically with the resource.

**United States Department of the Interior
National Park Service**

**NATIONAL REGISTER OF HISTORIC PLACES
CONTINUATION SHEET**

Section number 10 Page 13

CFN-259-1116

R. R. and Antoinette Loudon House, Jefferson County, Iowa.

LIST OF PHOTOGRAPHS

1. R. R. and Antoinette Loudon House
905 East Adams Avenue
Fairfield, IA 52556
Looking northeast
William C. Page, Photographer
January 29, 1998

2. R. R. and Antoinette Loudon House
905 East Adams Avenue
Fairfield, IA 52556
Looking northwest
William C. Page, Photographer
January 29, 1998