

THE FIRST NATIONAL BANK



Main Street Commercial District  
Dothan, Alabama, Houston County

Steven Fleegal

July 1982

Dothan Landmarks Foundation, Inc.

101 E. Main Street, The First National Bank,  
northeast corner of E. Main Street and  
N. Foster Street, from southwest.

Photo Number: 1

FEB 16 1983



THE DOWN TOWN CLUB



Main Street Commercial District  
Dothan, Alabama, Houston County

Steven Fleegal

July 1982

Dothan Landmarks Foundation, Inc.

110 N. Foster St., east side of N. Foster St.  
from southwest.

Photo Number: 2

FEB 16 1983





**LORCHS**  
DIAMOND SHOP

**baxter's**  
SHOES

Seasons Past  
ANTIQUE

BOY SCOUTS OF AMERICA  
OFFICE

Main Street Commercial District  
Dothan, Alabama, Houston County

Steven Fleegal

July 1982

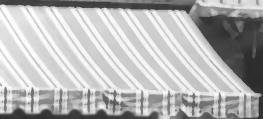
Dothan Landmarks Foundation, Inc.

114 - 142 N. Foster St., east side of  
N. Foster St. from southwest.

Photo Number: 3

FEB 16 1983

*friendly*  
**SHOP**



Main Street Commercial District  
Dothan, Alabama, Houston County

Steven Fleegal

July 1982

Dothan Landmarks Foundation, Inc.

122 N. Foster St., east side of N. Foster St.  
from west.

Photo Number: 4

FEB 16 1983



Main Street Commercial District  
Dothan, Alabama, Houston County

Steven Fleegal

July 1982

Dothan Landmarks Foundation, Inc.

124 - 128 N. Foster St., east side of  
N. Foster St. from southwest.

Photo Number: 5

FEB 16 1983



Saad's

House of Wigs

SAAD'S

SAAD'S

SAAD'S

SAAD'S

SAAD'S

Main Street Commercial District  
Dothan, Alabama, Houston County

Steven Fleegal

July 1982

Dothan Landmarks Foundation, Inc.

130 - 142 N. Foster St., east side of  
N. Foster St. from southwest.

Photo Number: 6





Saad's



HENNINGSON'S

HENNINGSON'S  
LAW OFFICES

HENNINGSON'S  
LAW OFFICES

HENNINGSON'S  
LAW OFFICES

Main Street Commercial District  
Dothan, Alabama, Houston County

Steven Fleegal

July 1982

Dothan Landmarks Foundation, Inc.

130 - 134 N. Foster St., Farmer-Porter Building,  
east side of N. Foster St. from southwest.

Photo Number: 7

FEB 16 1983



FREEMAN

Brown's

SALE

SALE

GARNER  
INS. AGENT

Main Street Commercial District  
Dothan, Alabama, Houston County

Steven Fleegal

August 1982

Dothan Landmarks Foundation, Inc.

138 - 142 N. Foster St., Porter Farmer Building,  
and 108 E. Troy St., corner of N. Foster St.  
and E. Troy St., from northwest.

Photo Number: 8

FEB 16 1983

Moore's

SALE DAYS

NIKE

SALE DAYS

FREE  
PARKING

SALE

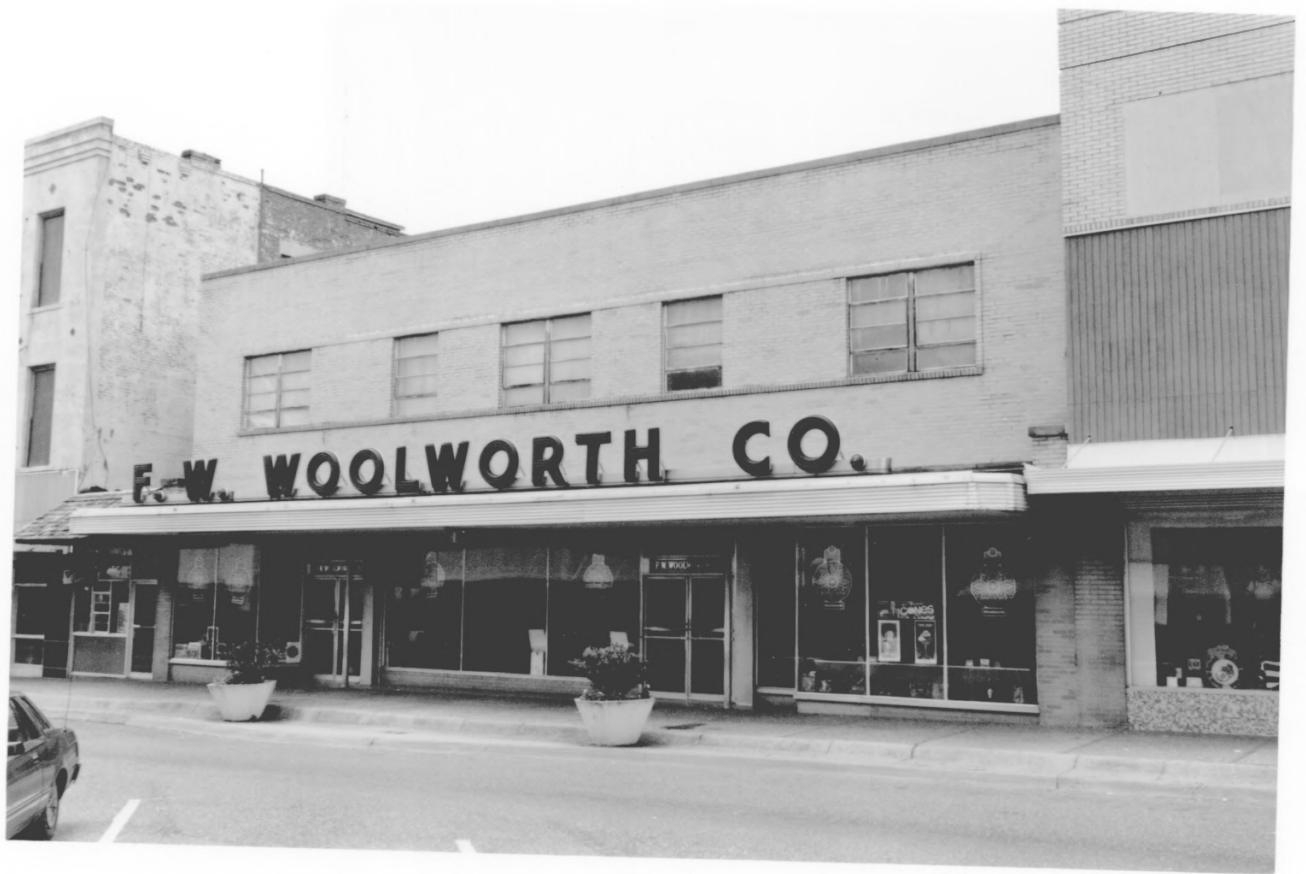
Main Street Commercial District  
Dothan, Alabama, Houston County

Steven Fleegal  
August 1982  
Dothan Landmarks Foundation, Inc.

145 N. Foster St., west side of N. Foster St.  
from northeast.

Photo Number: 9

FEB 16 1983



Main Street Commercial District  
Dothan, Alabama, Houston County

Steven Fleegal

August 1982

Dothan Landmarks Foundation, Inc.

141 - 143 N. Foster St., Lurie Building, and  
139 N. Foster St., west side of  
N. Foster St. from northeast.

Photo Number: 10





NOON FREE

PLEASE  
LEAVE

Super Bar

MENS WEAR

SUPER BAR

MENS WEAR

Main Street Commercial District  
Dothan, Alabama, Houston County

Steven Fleegal

July 1982

Dothan Landmarks Foundation, Inc.

127 - 137 N. Foster St., west side of N. Foster St.  
from southeast.

Photo Number: 11

FEB 16 1983



LAW OFFICES  
R. A. FOSTER, D.C.

EYE GLASS FASHIONS  
ONE DAY SERVICE

REAR

WIG

WIGS

PARKING  
NO PARKING  
EXCEPT FOR  
LOADING AND UNLOADING

NO PARKING  
EXCEPT FOR  
LOADING AND UNLOADING

NO PARKING  
EXCEPT FOR  
LOADING AND UNLOADING

Main Street Commercial District  
Dothan, Alabama, Houston County

Steven Fleegal

July 1982

Dothan Landmarks Foundation, Inc.

105 - 125 N. Foster St., west side of N. Foster St.  
from southeast.

Photo Number: 12

FEB 16 1983



The Friendly  
**WIG**  
SHOP

JEWELERS

WHITLEY'S

MOVED  
to the new  
location

MOVED  
to the new  
location

Main Street Commercial District  
Dothan, Alabama, Houston County

Steven Fleegal

Winter 1982

Dothan Landmarks Foundation, Inc.

117 - 121 N. Foster St., west side of  
N. Foster St. from southeast.

Photo Number: 13

FEB 16 1983



Main Street Commercial District  
Dothan, Alabama, Houston County

Steven Fleegal

July 1982

Dothan Landmarks Foundation, Inc.

109 - 123 W. Main St., south side of  
W. Main St. from northeast.

Photo Number: 14

111 1982





EXCLUSIVE  
SERVICES  
FOR THE  
SOUTH  
WEST  
AND  
MIDDLE  
WEST



ESTABLISHED  
1910  
100 N. 10th  
W. 10th  
W. 10th  
W. 10th  
W. 10th  
W. 10th

DODD LITTLE  
100 N. 10th  
W. 10th  
W. 10th  
W. 10th



Main Street Commercial District  
Dothan, Alabama, Houston County

Steven Fleegal

July 1982

Dothan Landmarks Foundation, Inc.

117 - 123 W. Main St., south side of  
W. Main St. from northeast.

Photo Number: 15



All items reduced  
20% off

OPEN  
10 AM - 6 PM

NO PARKING  
IN FRONT  
OF THIS BUILDING

Main Street Commercial District  
Dothan, Alabama, Houston County

Steven Fleegal  
Winter 1982  
Dothan Landmarks Foundation, Inc.

109 - 113 W. Main St., south side of  
W. Main St. from north.

Photo Number: 16

FEB 16 1983



KRESS

KRESS

KRESS & CO.

Wouldn't you rather have a Durban Park?   
 100% CASH ON DELIVERY

Large   
 100% CASH ON DELIVERY

KRESS & CO. Home Goods

RECYCLING

Main Street Commercial District  
Dothan, Alabama, Houston County

Steven Fleegal

July 1982

Dothan Landmarks Foundation, Inc.

101 - 107 W. Main St., Kress Building,  
southwest corner of W. Main St. and  
S. Foster St. from northeast.

Photo Number: 17

FILE TO 100



MARK FURNACE CO.

The Coca-Cola  
Falls QUEEN

COUNSELING  
SERVICES

FACTORY QUINN  
FALLS QUEEN  
COUNSELING SERVICES

Main Street Commercial District  
Dothan, Alabama, Houston County

Steven Fleegal

July 1982

Dothan Landmarks Foundation, Inc.

116 - 126 S. Foster St., west side of  
S. Foster St. from southeast.

Photo Number: 18

FEB 16 1983





GARMICHAEL

STRICKLAND  
MUSIC

Complete  
MUSIC  
SUPPLIES

HOBSON & CO.  
BUSINESS MACHINE CO.

CASH

Main Street Commercial District  
Dothan, Alabama, Houston County

Steven Fleegal  
Winter 1982  
Dothan Landmarks Foundation, Inc.

128 - 140 S. Foster St., west side of  
S. Foster St. from northeast.

Photo Number: 19

FEB 16 1983



SYLVANIA

CARMICHAEL  
ELECTRONICS

CARMICHAEL

WHOLESALE



CARMICHAEL ELECTRONICS

Main Street Commercial District  
Dothan, Alabama, Houston County

Steven Fleegal  
Winter 1982  
Dothan Landmarks Foundation, Inc.

140 S. Foster St., Carmichael Building,  
northwest corner of S. Foster and  
W. Crawford Streets from southeast.

Photo Number: 20

FEB 15 1983



**HARDWARE & SEED**

**T.R. FRITH SEED & HDW.**  
ELECTRIC APPLIANCES

**T.R. FRITH SEED & HARDWARE**

T.R. FRITH  
SEED HARDWARE  
Sprite

Main Street Commercial District  
Dothan, Alabama, Houston County

Steven Fleegal

July 1982

Dothan Landmarks Foundation, Inc.

125 -1127 S. Foster St., northeast corner of  
S. Foster and E. Crawford Streets from southwest.

Photo Number: 21

FEB 16 1983



CAFETERIA

Peters  
ANTIQUE CO.



HARDWARE & SEED

T.R. FRITH  
SEED & HARDWARE  
OFFICIAL  
Sprite

T.R. FRITH SEED & HDW.  
ELECTRIC APPLIANCES

T.R.

Main Street Commercial District  
Dothan, Alabama, Houston County

Steven Fleegal  
December 1981  
Dothan Landmarks Foundation, Inc.

109 - 127 S. Foster St., east side of S. Foster  
from southwest.

Photo Number: 22

FEB 16 1983





CAFETERIA

CAFETERIA

Greening

Main Street Commercial District  
Dothan, Alabama, Houston County

Steven Fleegal  
December 1981  
Dothan Landmarks Foundation, Inc.

119 - 121 S. Foster St., east side of  
S. Foster St. from southwest.

Photo Number: 23



KAPIC  
Curtain

BICYCLES

NO PARKING  
Loading Zone

Main Street Commercial District  
Dothan, Alabama

Steven Fleegal

August 1982

Dothan Landmarks Foundation, Inc.

113 - 117 S. Foster St., east side of S. Foster St.  
from southwest.

Photo Number: 24



Main Street Commercial District  
Dothan, Alabama, Houston County

Steven Fleegal

July 1982

Dothan Landmarks Foundation, Inc.

107 - 109 S. Foster St., east side of  
S. Foster St. from west.

Photo Number: 25

FEB 16 1983



Main Street Commercial District  
Dothan, Alabama, Houston County

Steven Fleegal

August 1982

Dothan Landmarks Foundation, Inc.

100 - 110 E. Main St., Blumberg Building(s),  
southeast corner of E. Main and  
S. Foster Streets from northwest.

Photo Number: 26

FEB 16 1983





CHARLES HENRY  
CHICAGO, ILL.

Drive-Through Only  
MAIN STREET  
O'HILL

E. PORTER

KRESS

NO PARKING

Main Street Commercial District  
Dothan, Alabama, Houston County

Steven Fleegal

July 1982

Dothan Landmarks Foundation, Inc.

100 - 120 E. Main St., south side of  
E. Main St. between S. Foster and  
S. St. Andrews Streets, from northeast.

Photo Number: 27

FEB 16 1983



Main Street Commercial District  
Dothan, Alabama, Houston County

Steven Fleegal

July 1982

Dothan Landmarks Foundation, Inc.

112 E. Main St., E. R. Porter Hardware Building,  
south side of E. Main St. between S. Foster and  
S. St. Andrews Streets, from northeast.

Photo Number: 28

FEB 16 1983



COOK'S  
GAY 90's  
PIZZA  
1500 W. 10th St.

RE-ELECT  
A.B.  
CLARK  
SHERIFF

TRI-STATE  
PUBLISHING CO.  
PUBLISHED WEEKLY

GAY'S  
ITALIAN DINNERS  
PIZZA  
LADY BAR

Main Street Commercial District  
Dothan, Alabama, Houston County

Steven Fleegal

July 1982

Dothan Landmarks Foundation, Inc.

126 E. Main St., Old Ellison Drug Building,  
southwest corner of E. Main and  
S. St. Andrews Streets from northeast.

Photo Number: 29

FEB 16 1983



Main Street Commercial District  
Dothan, Alabama, Houston County

Steven Fleegal

July 1982

Dothan Landmarks Foundation, Inc.

106 - 110 S. St. Andrews St., west side of  
S. St. Andrews St. from northeast.

Photo Number: 30

FEB 16 1983





Main Street Commercial District  
Dothan, Alabama, Houston County

Steven Fleegal

December 1981

Dothan Landmarks Foundation, Inc.

North side of Southern Railroad tracks between  
S. St. Andrews and S. Foster Streets.

Photo Number: 31

FEB 16 1983



TRI-STATE  
PUBLISHING  
CO.

TRI-STATE  
Graphics  
OFFICE SUPPLY

Main Street Commercial District  
Dothan, Alabama, Houston County

Steven Fleegal

July 1982

Dothan Landmarks Foundation, Inc.

120 - 126 S. St. Andrews St., west side of  
S. St. Andrews St. from northeast.

Photo Number: 32

FEB 16 1983



Trailways

Trailways

TRAILWAYS  
BUS

TRAILWAYS

PRICE  
27 1/2

Main Street Commercial District  
Dothan, Alabama, Houston County

Steven Fleegal

July 1982

Dothan Landmarks Foundation, Inc.

130 S. St. Andrews St., northwest corner of  
S. St. Andrews and E. Crawford Streets  
from east.

Photo Number: 33

FEB 16 1983



MONDO'S

MONDO'S

WHOLESALE  
TO EVERYONE

SALE!

SALE!

SALE!

SALE!

SALE!

SALE!

Wholesale Carp  
CREDIT - CASH

Outlet  
WHOLESALE - RETAIL

SALE!



Main Street Commercial District  
Dothan, Alabama, Houston County

Steven Fleegal

August 1982

Dothan Landmarks Foundation, Inc.

131 S. St. Andrews St., Old Malone Ford Co.  
Building, northeast corner of S. St. Andrews  
and E. Crawford Streets from southwest.

Photo Number: 34





PEDDLER'S  
PALACE

Main Street Commercial District  
Dothan, Alabama, Houston County

Steven Fleegal

July 1982

Dothan Landmarks Foundation, Inc.

Holman Alley, cotton warehouse, Holman Alley  
between E. Main St. and E. Crawford St.,  
from northwest.

Photo Number: 35

FEB 16 1983



Main Street Commercial District  
Dothan, Alabama, Houston County

Steven Fleegal

July 1982

Dothan Landmarks Foundation, Inc.

103 - 119 S. St. Andrews St., east side of  
S. St. Andrews St. from southwest.

Photo Number: 36

FEB 16 1983



TOP  
SALES  
SALE

119

SOUTHERN  
METALLIC INC.

Main Street Commercial District  
Dothan, Alabama, Houston County

Steven Fleegal

July 1982

Dothan Landmarks Foundation, Inc.

113 - 117 S. St. Andrews St., east side of  
S. St. Andrews St. from west.

Photo Number: 37

FEB 16 1983



Main Street Commercial District  
Dothan, Alabama, Houston County

Steven Fleegal

July 1982

Dothan Landmarks Foundation, Inc.

103 - 109 S. St. Andrews St., Saliba Building,  
east side of S. St. Andrews St. from southwest.

Photo Number: 38

FEB 16 1983





Main Street Commercial District  
Dothan, Alabama, Houston County

Steven Fleegal

July 1982

Dothan Landmarks Foundation, Inc.

200 - 202 E. Main St., Young Building,  
southeast corner of E. Main and S. St. Andrews  
Streets from northwest.

Photo Number: 39

FEB 16 1983

PEOPLES  
PAWNS  
ALL TRADE  
LOANS

WE  
LEAS  
BUY  
SELL  
TRADE

NO  
PARKING  
ANY  
TIME

MAN ST  
WY



Main Street Commercial District  
Dothan, Alabama, Houston County

Steven Fleegal

Winter 1982

Dothan Landmarks Foundation, Inc.

200 - 206 E. Main St., south side of E. Main St.  
between S. St. Andrews and Southern railroad  
tracks, from north.

Photo Number: 40

FEB 16 1983

**LIDDON FURNITURE CO.**  
EASY  
LOW PRICES TERMS



**MILK AND  
ICE CREAM**

LIDDON

FURNITURE



LIDDON  
FURNITURE CO.  
Liddon - 17 - Street  
Liddon - 17 - Street



**PEOPLES**  
→  
**PAWNS**  
CUSTOMER  
PARKING

**PEOPLES**

Main Street Commercial District  
Dothan, Alabama, Houston County

Steven Fleegal  
July 1982  
Dothan Landmarks Foundation, Inc.

221 - 229 E. Main St., north side of E. Main St.  
between N. St. Andrews and N. Appletree Streets,  
from southwest.

Photo Number: 41

FEB 16 1983

# Bender's

LINSEY PAWN

PAWN

BUY-SELL-TRADE

FOR SALE  
BY OWNER  
CLEARANCE PRICES

NO  
LEFT TURN

CLOSED

CLEARANCE



Main Street Commercial District  
Dothan, Alabama, Houston County

Steven Fleegal

July 1982

Dothan Landmarks Foundation, Inc.

203 - 205 E. Main St., north side of  
E. Main St. between N. St. Andrews and  
N. Appletree Streets, from south.

Photo Number: 42

1983 16



First  
Alabama  
Bank

First  
Alabama  
Bank

Blender's

OFF  
PA

PAWN  
CE

Main Street Commercial District  
Dothan, Alabama, Houston County

Steven Fleegal

July 1982

Dothan Landmarks Foundation, Inc.

201 E. Main St., Old Dothan Bank and Trust  
Building, northeast corner of E. Main and  
N. St. Andrews Streets, from southwest.

Photo Number: 43

FEB 16 1983

*Rose*  
**JEWELLERS**



Main Street Commercial District  
Dothan, Alabama, Houston County

Steven Fleegal

July 1982

Dothan Landmarks Foundation, Inc.

107 E. Main St., north side of E. Main St.  
between N. Foster and N. St. Andrews Streets,  
from south.

Photo Number: 47

SEP 16 1983



- 1) MAIN STREET HISTORIC DISTRICT BUILDING INVENTORY # 15
- 2) DOTHAN, ALABAMA
- 3) D. WALLACE
- 4) 12/93
- 5) ALABAMA HISTORICAL COMMISSION
- 6) N. FOSTER ST. & TROY ST. FACADES, CAMERA LOOKING SO
- 7) PHOTO # 1



RCA

THE SOURCE  
FOR ALL YOUR  
CABLE NEEDS

NO PARKING  
ANYTIME

1) MAIN STREET HISTORIC DISTRICT BUILDING INVENTOR. #38 & #39  
(PORTIONS OF #37 & #40 ENTER FRAME)

2) DOTHAN, ALABAMA

3) D. WALLACE

4) 12/93

5) ALABAMA HISTORICAL COMMISSION

6) S. FOSTER ST. FACADE, CAMERA LOOKING SOUTHWEST

7) PHOTO #2