











EAGLE CITY HALL  
BUILT 1901



IMPROVED  
ORDER OF **RED MEN**





EAGLE PUBLIC SCHOOL

LITTER CAN  
W. H. B. B. B. B. B.

















PROPANE



BECKERMAN GENERAL STORE  
EAGLE, ALASKA





# BOONE'S

MEATMARKETS, DELICIOUS & COMMODITIES

CHEVROLET

OPEN















THIS BOILER WAS USED AS A POWER SOURCE TO PUMP WATER TO FORT EGBERT FROM 1899 TO 1902. THE SMALL BUILDINGS BETWEEN HERE AND THE FORT WERE USED AS WARMING HOUSES TO HEAT THE WATER AS IT FLOWED THROUGH INSULATED PIPES. WATER WAS STORED IN THE REDWOOD TANK NEAR THE SPRING.



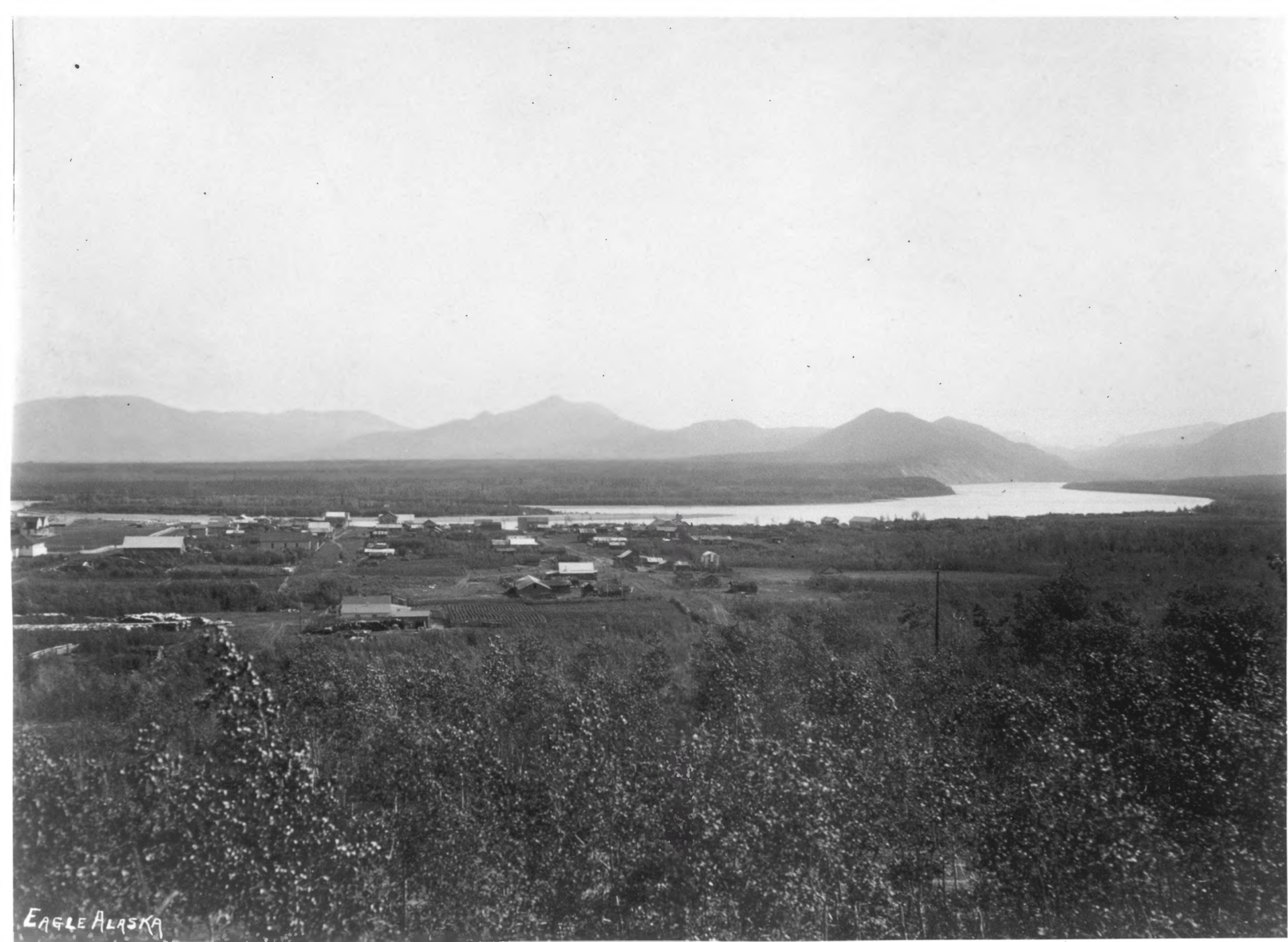




EAGLE ALASKA  
C. ANDREWS



At the "A.C." Alaska Commercial Co. Store  
Eagle Alaska



EAGLE ALASKA



**United States Department of the Interior  
National Park Service**

**National Register of Historic Places  
Continuation Sheet**

Section number     -     Page   1  

---

List of Photographs and Maps Attached

Photographs

1. Eagle Bluff, 6-25-87, looking north  
Amundsen Street, Eagle, 6-25-87, looking west
3. Courthouse, Eagle, 6-24-87, looking west (from east)
4. Wellhouse (Pumphouse), Eagle, 6-24-87, looking southeast
5. Eagle City Hall, Eagle, 6-25-87, looking south
6. Improved Order of Redmen Lodge, Eagle, 6-25-87, looking south
7. Episcopal Church, Eagle, 6-25-87, looking south
8. Eagle Public School, Eagle, 6-25-87, looking west-northwest
9. Front Street, Eagle, 6-25-87, looking south
10. Corner of Front and Amundsen Streets, Eagle, 6-25-87, looking south
11. Northern Commercial Company Store, Eagle, 6-25-87, looking northwest
12. Taylor Building, Eagle, 6-25-87, looking southwest
13. McWilliams-Burke House, Eagle, 6-25-87, looking south
14. Powers' Barn, Eagle, 6-25-87, looking east
15. Road House, Eagle, 6-25-87, looking west-northwest
16. Biderman's General Store, Eagle, 6-25-87, looking northeast
17. Boone's Store, Eagle, 6-25-87, looking north and west
18. Fort Egbert, 6-24-87, looking west
19. Noncommissioned Officers' Quarters, Ft. Egbert, 6-25-87, looking west
20. Mule Barn, Ft. Egbert, 6-25-87, looking west-southwest
21. Waterwagon Shed, Ft. Egbert, 6-25-87, looking west-southwest
22. Granary, Ft. Egbert, 6-24-87, looking northwest

United States Department of the Interior  
National Park Service

National Register of Historic Places  
Continuation Sheet

Section number      -      Page   2  

---

Eagle Historic District  
List of Attachments Continued

- 23. Quartermaster's Storehouse, Ft. Egbert, looking east
- 24. Boiler at American Creek, Ft. Egbert, 6-24-87, looking north
- 25. Hospital Ruins, Ft. Egbert, 6-25-87, looking north

"Eagle from the Bluff, 1909," looking south, C.L. Andrews Collection, University of Oregon

Taylor Building, Eagle, date unknown, University of Oregon Library

Eagle, ca. 1905, looking east, C.L. Andrews Collection, No. 1098, University of Oregon Library

Str. Sarah, lying at Eagle, Eagle Bluff in background, undated, looking northwest, James T. Gray Papers, University of Oregon Library

Maps

- A - Eagle (D-1), Alaska, U.S. Geological Survey, 1:63,360, 1956, annotated with UTMs
- B - Eagle Historic District, NPS (ARO-RCR), 2"=1,500', 1987, showing Eagle Historic District boundaries
- C - Eagle Historic District, Eagle City section, NPS (ARO-RCR), not to scale, 1987, showing contributing/non-contributing resources
- D - Eagle Historic District, Ft. Egbert section, NPS (ARO-RCR), not to scale, 1987, showing contributing/non-contributing resources