



ORDER # 001551

LOC/ORIG: 0023-P- 51

1 / 1926 : LOCATION: PORTLAND *MULTNOMAH COUNTY*
PHOTOGRAPHER: *ONAGONG*

TITLE-POLICE DIRECTS TRAFFIC FROM CENTER OF 5TH & MORRISON, TO NORTH IS MEIER & FRANK, AND LIPMAN & WOLFE.

This photoprint is issued for reference use only. It is not to be copied for resale. Permission for use in a publication, film or video production must be requested in writing from the Photographs Librarian.

Photographs Department
Oregon Historical Society
1230 SW Park Avenue
Portland, Oregon 97205

NEGATIVE NUMBER *see order # & LOC/ORIG;*

1A OF 30



ORDER # 001550

LOC/ORIG: 0023-P- 50

1.1920

LOCATION: PORTLAND *MULTNOMAH COUNTY*

PHOTOGRAPHER:

ONEGOLF

**III E-5TH ST. LOOKING SOUTH FROM WASH-
INGTON ST., MEIER & FRANK, LIPMAN &
WOLFE AND TREES BY COURTHOUSE SEEN.**

This photoprint is issued for reference use only. It is not to be copied for resale. Permission for use in a publication, film or video production must be requested in writing from the Photographs Librarian.

Photographs Department
Oregon Historical Society
1230 SW Park Avenue
Portland, Oregon 97205

NEGATIVE NUMBER See order # & LOC/ORIG:

1B OF 30



Lipman-Wolfe and Company Building
521 SW 5th Avenue
Portland, OR MULTNOMAH-COUNTY

Description: NE corner

Heritage Investment Corp.
123 NW 2nd Avenue, Suite 200
Portland, OR 97209

Photo 1c of 30

Dale Archer Photography



Lepiman-Wolfe and Company Building
521 SW 5th Avenue
Portland, OR MULTNOMAH COUNTY

Description: NE corner

Heritage Investment Corp.
123 NW 2nd Avenue, Suite 200
Portland, OR 97209

Photo 2 of 30

Dale Archer Photography



Lepiman-Wolfe and Company Building

521 SW 5th Avenue

Portland, OR

MULTNOMAH COUNTY

Description: NE elevation

Heritage Investment Corp.

123 NW 2nd Avenue, Suite 200

Portland, OR 97209

Photo 3 of 30

Dale Archer Photography 1988



Lipman-Wolfe and Company Building
521 SW 5th Avenue
Portland, OR MULTNOMAH COUNTY

Description: SE corner

Heritage Investment Corp.
123 NW 2nd Avenue, Suite 200
Portland, OR 97209

Photo 4 of 30

Dale Archer Photography 1988



Lipman - Wolfe and Company Building

521 SW 5th Avenue

Portland, OR

MULTNOMAH COUNTY

Description: south end of East Elevation

Heritage Development Corp.

123 NW 2nd Avenue, Suite 200

Portland, OR 97209

Photo 5 of 30

Dale Archer Photography 1988



Lipman-Wolfe and Company Building
521 NW 5th Avenue
Portland, OR MULTNOMAH County

Description: North end of East Elevation

Heritage Investment Corp.
123 NW 2nd Avenue, Suite 200
Portland, OR 97209

Photo 6 of 30

Dale Archer Photography 1988



GRAND OPENING
SUMMER 1982

BUS
STOP

FOR LEASE INFORMATION
SEE BROKER 722-550
RETAIL OFFICE SPACE
AVAILABLE
ALONG ST. 1ST FLOOR
COMMERCIAL SERVICES
T.A.A. LIMITED

Lipman-Wolfe and Company Building
521 SW 5th Avenue
Portland, OR Multnomah County

Description: Street level, East Elevation

Heritage Investment Corp.
123 NW 2nd Avenue, Suite 200
Portland, OR 97209

Photo 7 of 30

Dale Archer Photography 1988



Lipman - Wolfe and Company Building
521 SW 5th Avenue
Portland, OR MULTNOMAH COUNTY

Description: Street level, East Elevation

Heritage Investment Corp.
123 NW 2nd Avenue, Suite 200
Portland, OR, 97209

Photo 8 of 30

Dale Archer Photography



CLAMBER 1980
COMMERCIAL REAL ESTATE
1111 MARKET STREET

FOR LEASING INFORMATION
FOR MORE INFO 224-5500
OFFICE: 224-5500
1111 MARKET STREET
PHILADELPHIA, PA. 19102

GRAND OPENING
SUMMER 1980
COMMERCIAL REAL ESTATE
1111 MARKET STREET

Lipman-Wolfe and Company Building
521 SW 5th Avenue
Portland, OR MULTNOMAH COUNTY

Description: Street level, East Elevation

Heritage Investment Corp.
123 NW 2nd Avenue, Suite 200
Portland, OR 97209

Photo 9 of 30

Dale Archer Photography 1988



Lipman-Wolfe and Company Building
521 SW 5th Avenue
Portland, OR MULTNOMAH COUNTY

Description: south side detail

Heritage Investment Corp.
123 NW 2nd Avenue, Suite 200
Portland, OR 97209

Photo 10 of 30

Date Archer Photography 1988



Lipman-Wolfe and Company Building

521 SW 5th Avenue

Portland, OR 97209 MULTNOMAH COUNTY

Description: South side detail

Heritage Investment Corp.

123 NW 2nd Avenue, Suite 200

Portland, OR 97209

Photo 11 of 30

Dale Archer Photography 1988



Lipman-Wolfe and Company Building

521 SW 5th Avenue

Portland, OR 97209 MULTNOMAH COUNTY

Description: NE corner detail

Heritage Investment Corp.

123 NW 2nd Avenue, Suite 200

Portland, OR 97209

Photo 12 of 30

Dale Archer Photography



Lipman-Wolfe and Company Building
521 SW 3rd Avenue.
Portland, OR MULTNOMAH COUNTY

Description: SE corner detail

Heritage Investment Corp.
123 NW 2nd Avenue, Suite 200
Portland, OR 97209

Photo 13 of 30

Dale Archer Photography 1988



Lipman-Wolfe and Company Building
521 SW 5th Avenue
Portland, OR MULTNOMAH COUNTY

Description: SE corner detail

Heritage Investment Corp.
123 NW 2nd Avenue, Suite 200
Portland, OR, 97209

Photo 14 of 30

Dale Archer Photography 1988



Lipman-Wolfe and Company Building
521 SW 5th Avenue
Portland, OR MULTNOMAH COUNTY

Description: 9th & 10th floor windows, south side

Heritage Investment Corp.
123 NW 2nd Avenue, Suite 200
Portland, OR 97209

Photo 15 of 30

Dale Archer Photography



Lipman - Wolfe and Company Building
521 SW 5th Avenue
Portland, Oregon MULTNOMAH COUNTY

Description: 1st Floor, looking SE

Heritage Investment Corp.
123 NW 2nd Avenue, Suite 200
Portland, OR 97210

Photo 16 of 30

Steve Archer Photography 1988



Lipman - Wolfe and Company Building

521 SW 5th Avenue

Portland, Oregon multistoried concrete

Description: 1st Floor, looking NE

Heritage Investment Corp.

123 NW 2nd Avenue, Suite 200

Portland, OR 97210

Photo 17 of 30

Steve Archer Photography 1988



Lipman - Wolfe and Company Building
521 SW 5th Avenue
Portland, OR multnomah county

Descriptors: 1st Floor, Looking N

Heritage Investment Corp.
123 NW 2nd Avenue, Suite 200
Portland, OR 97209

Photo 18 of 30

Date Archer Photography 1988



Lipman-Wolfe and Company Building
521 SW 5th Avenue

Portland, OR MULTNOMAH COUNTY

Description: 1st Floor vaulted ceiling

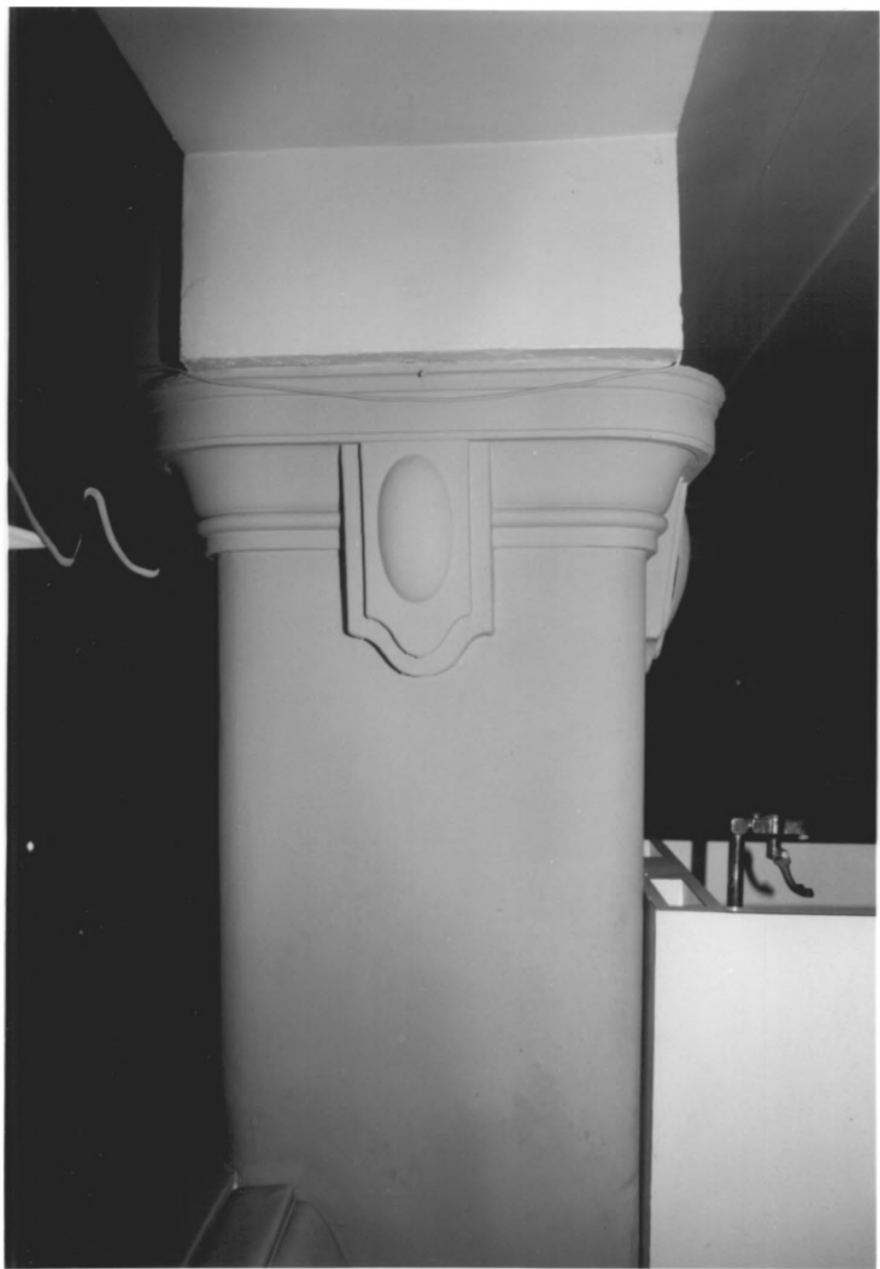
Heritage Investment Corp.

123 NW 2nd Avenue, Suite 200

Portland, OR 97209

Photo 19 of 30

Dale Archer Photography 1986



Lipman - Wolf and Company Building
521 SW 5th Avenue
Portland, Oregon MULTNOMAH COUNTY

Description: 1st Floor, column detail

Heritage Investment Corp.
123 SW 2nd Avenue, Suite 200
Portland, OR 97209

Photo 20 of 30.

Steve Archer Photography 1988



Lipman - Wolfe and Company Building
521 SW 5th Avenue
Portland, Oregon MULTNOMAH COUNTY

Description: 1st Floor, Column Detail

Heritage Development Corp.
123 NW 2nd Avenue, Suite 200
Portland, OR 97209

Photo 21 of 30

Bill Archer Photography 1988



LIPMAN-WOLFE AND COMPANY BUILDING

521 SW 5th Avenue

Portland, Oregon *MULTNOMATH COUNTY*

DESCRIPTION: 3rd Floor, looking south

HERITAGE INVESTMENT CORP.

123 NW 2nd Avenue, Suite 200

Portland, OR 97209

Photo *22* of 30

Roll Archer Photography - 1988



Lipman-Wolfe and Company Building
521 SW 5th Avenue
Portland, OR Multnomah County

Description: 4th floor, looking S

Heritage Investment Corp.
123 NW 2nd Avenue, Suite 200
Portland, OR 97209

Photo 23 of 30

Dale Archer Photography 1988



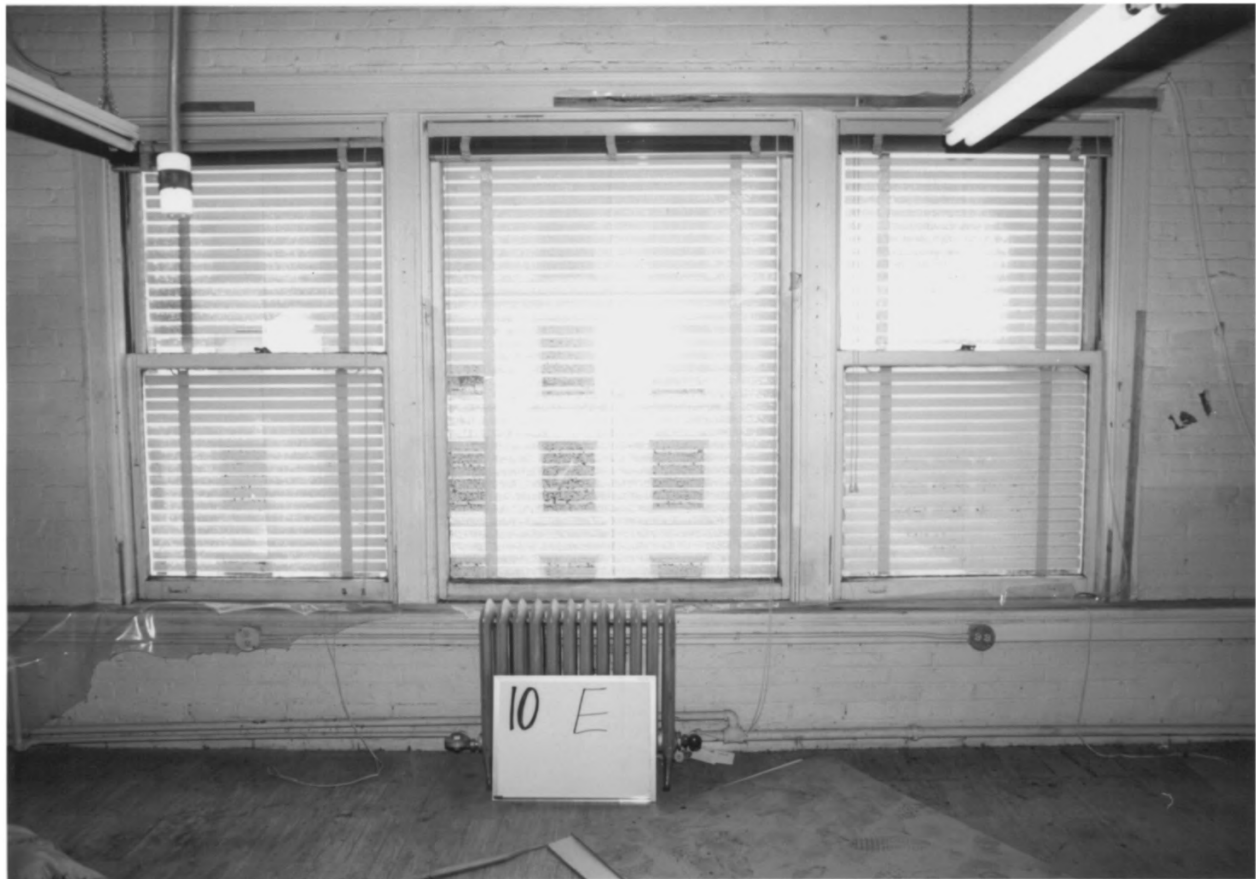
Lipman-Wolfe and Company Building
521 SW 5th Avenue
Portland, OR MULTNOMAH COUNTY

Descriptions: 10th floor, looking S

Heritage Investment Corp.
123 NW 2nd Avenue, Suite 200
Portland, OR 97209

Photo 24 of 30

Dale Archer Photography 1988



10 E

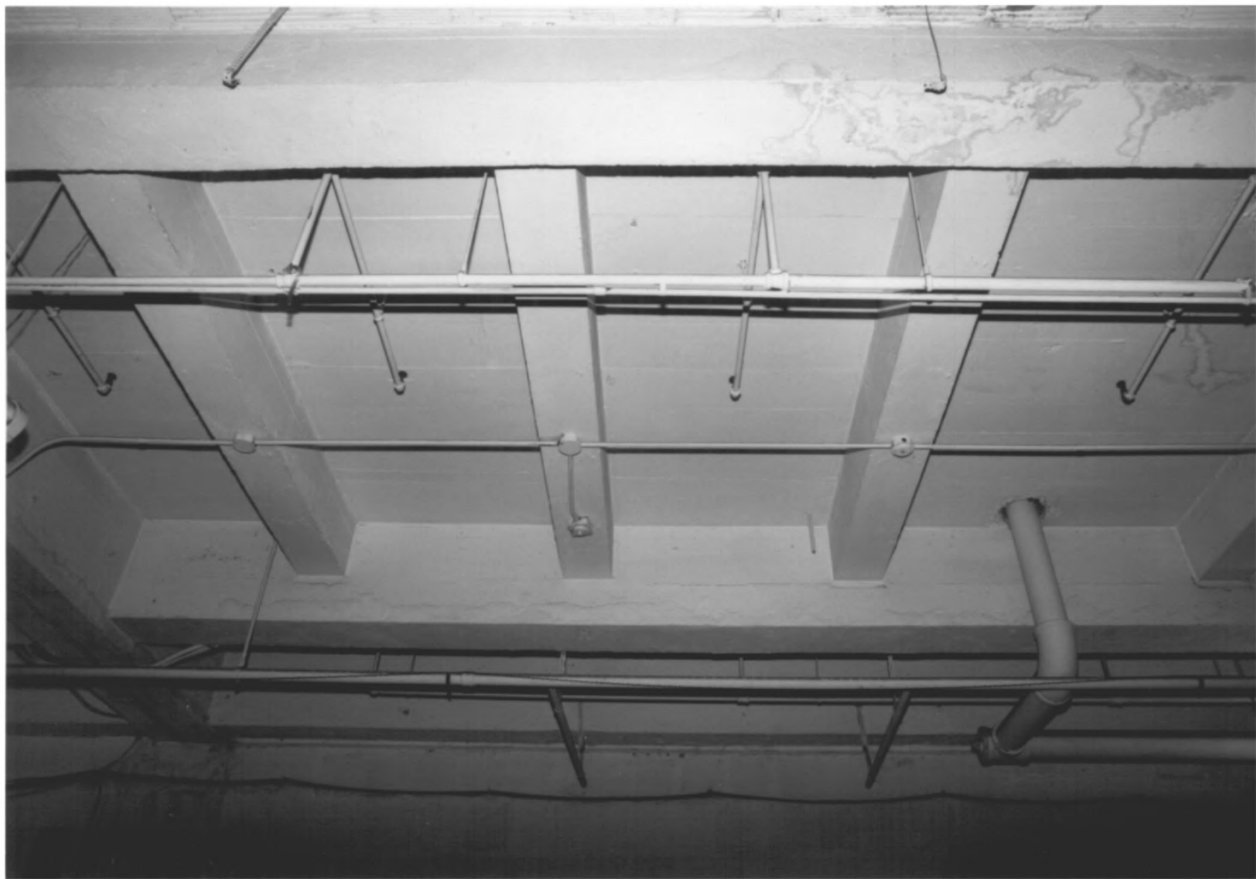
Lipman - Wolfe and Company Building
521 SW 5th Avenue
Portland, OR Multnomah County

Description: 10th floor window, looking E

Heritage Investment Corp.
123 NW 2nd Avenue, Suite 200
Portland, OR 97209

Photo 25 of 30

Dale Archer Photography 1988



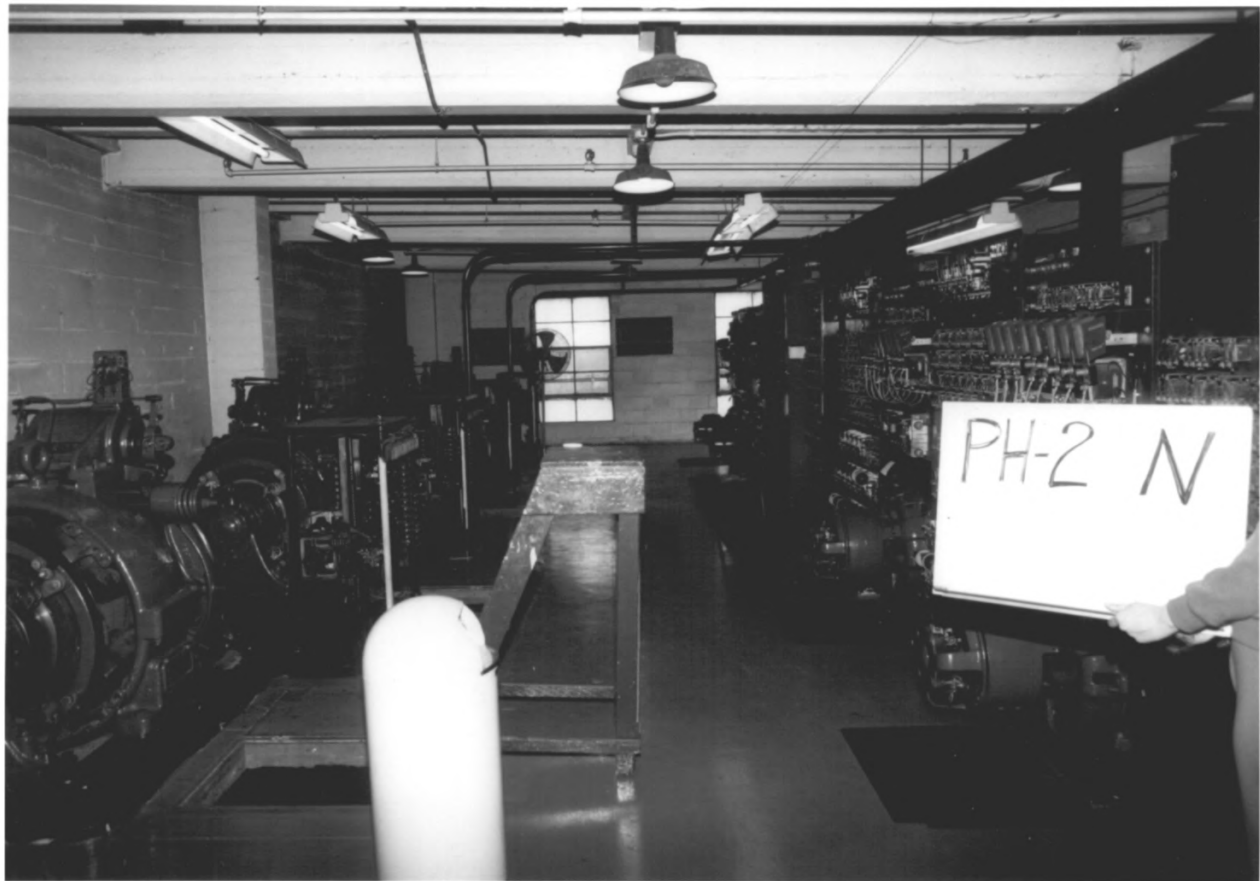
Lipman-Wolfe and Company Building
521 SW 5th Avenue
Portland, OR MULTNOMAH COUNTY

Description: 10th floor ceiling

Heritage Investment Corp.
123 NW 2nd Avenue, Suite 200
Portland, OR 97209

Photo 26 of 30

Dale Archer Photography 1988



Lipman-Wolfe and Company Building
521 SW 5th Avenue
Portland, OR ~~MULTNOMATH~~-country

Description: Mechanical Penthouse, 2nd floor, looking N

Heritage Investment Corp.
123 NW 2nd Avenue, Suite 200
Portland, OR 97209

Photo 27 of 30

Dale Archer Photography 1988



2 MW

Lipman-Wolfe and Company Building
521 SW 5th Avenue
Portland, OR Multnomah County

Description: 2nd floor, NW stair

Heritage Investment Corp.
123 NW 2nd Avenue, Suite 200
Portland, OR 97209

Photo 28 of 30

Dale Archer Photography. 1988



Lipman-Wolfe and Company Building
521 SW 5th Avenue
Portland, OR Multnomah County

Description: 8th floor, SW stair

Heritage Investment Corp.
123 NW 2nd Avenue, Suite 200
Portland, OR 97209

Photo 29 of 30

Dale Archer Photography 1988



Lipman-Wolfe and Company Building
521 SW 5th Avenue
Portland, OR multnomah county

Descriptions: Roof, looking SW

Heritage Investment Corp.
123 NW 2nd Avenue, Suite 200
Portland, OR 97209

Photo 30 of 30

Dale Archer Photography 1988