

UNITED STATES DEPARTMENT OF THE INTERIOR
NATIONAL PARK SERVICE

**NATIONAL REGISTER OF HISTORIC PLACES
INVENTORY -- NOMINATION FORM**

FOR NPS USE ONLY	
RECEIVED	FEB 25 1988
DATE ENTERED	APR 8 1988

DEPRESSION -ERA BUILDINGS

CONTINUATION SHEET

ITEM NUMBER

PAGE 1 of 2

Glide Ranger Station, Office #1084

NAME: Glide Ranger Station, Office #1084

LOCATION: Umpqua National Forest, Glide Ranger District; Congressional District 4
Glide, OR (41); Douglas County (019)

ADDRESS: USDA Forest Service
Umpqua National Forest
2900 NW Stewart Parkway, PO Box 1008
Roseburg, OR 97470

CLASSIFICATION/CATEGORY: Building

DESCRIPTION:

Condition

Excellent Altered Original Site

Glide Ranger Station, Office #1084: 1938; T-shaped, 1 story, wood frame, poured concrete foundation, wood shingled medium gable roof, center intersecting gable, east elevation, center porch gable, west elevation (main) facade, supported by two squared-timber posts with long curving inset timber brackets, open flagstone platform approached by three wide straight stone steps. Interior chimney offset on east roof slope. Horizontal clapboard exterior, vertical boards, battens every other board on all gable ends. Eight-over-eight double-hung sash windows, each flanked by decorative shutters having hand forged strap hinges and single large well-shaped pine tree cutout centered. Large graceful pine trees centered on each gable end, a rectilinear arrangement of three on the porch gable pediment, a large center tree extending almost the height of the pediment board flanked by two smaller trees of complex design. Main entry modified through replacement of original vertical plank door and multilight side panels with laminated door and single pane side panels. Entry was restored to original appearance in 1984.

SIGNIFICANCE:

The Glide Ranger Station Office typifies the construction projects undertaken by the Civilian Conservation Corps and signifies the aid to the local community provided by the emergency work-relief program through employment of youth and experienced craftsmen, purchase of building materials and camp supplies, and

UNITED STATES DEPARTMENT OF THE INTERIOR
NATIONAL PARK SERVICE

FOR NPS USE ONLY
RECEIVED
DATE ENTERED

**NATIONAL REGISTER OF HISTORIC PLACES
INVENTORY -- NOMINATION FORM**

DRESSION-ERA BUILDINGS

CONTINUATION SHEET

ITEM NUMBER

PAGE 2 of 2

personal expenditures of enrollees. The property represents the Forest Service's presence in the locality, as the headquarters for field operation, and denotes, via the physical facilities required to carry out the agency's expanding responsibilities, the critical transition in the Service's development from custodial superintendence to extensive resource management. The Glide Ranger Station Office exemplifies the rustic architectural idiom developed by the Forest Service, Pacific Northwest Region, to impart Forest Service identity and to represent its purposes and ideals; and signifies the agency's particular interpretation of a singular expression of early twentieth century American architectural thought. Possessing superior qualities of design and execution, the Office is an outstanding example of an architectural locution invested with special aesthetic and associative values by the agency that created it.

GEOGRAPHIC DATA:

Acreage: 0.103 acre

UTM Reference:

<u>Point</u>	<u>Zone</u>	<u>Easting</u>	<u>Northing</u>
A	10	491979	4793738

Verbal Boundary Description:

Glide Ranger Station

From the NW corner of DLC No. 42, T. 26 S., R. 3W., W.M., S0°35'W, 1,323.53 feet to a brass cap monument; thence N44°E, 104 feet to the point of beginning; thence N69°, 75 feet; thence N21°W, 60 feet; thence S69°W, 75 feet; thence S21°E, 60 feet to the point of beginning.

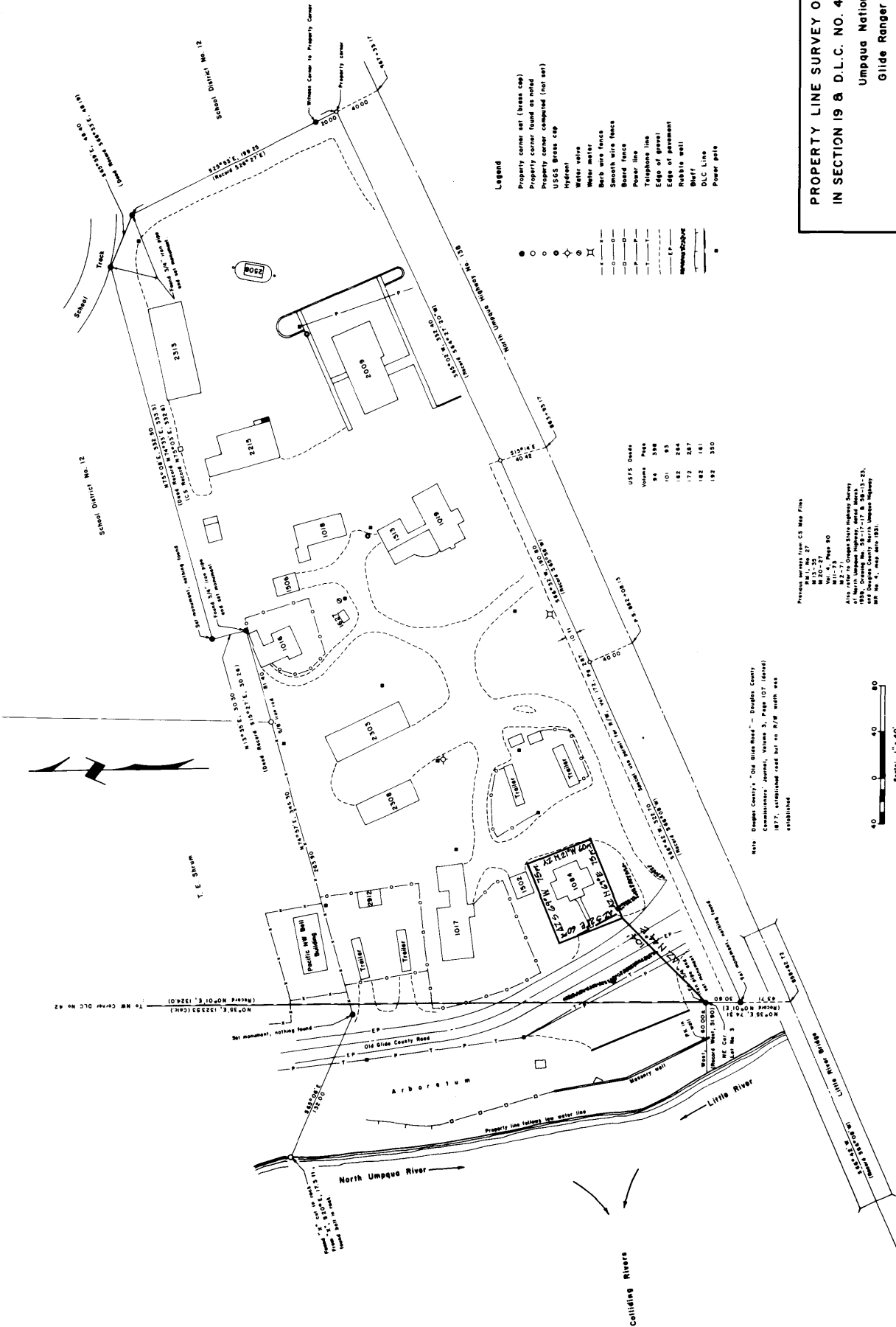
Containing 0.103 acre more or less.



**PROPERTY LINE SURVEY OF GLIDE RANGER STATION
IN SECTION 19 & D.L.C. NO. 42 IN T. 26 S., R. 3 W., W.M.**

Umpqua National Forest
Glide Ranger District

Bruce A. Shaner Engineer
Scale: 1" = 40'



- Legend**
- Property corner set (brass cap)
 - Property corner found as noted
 - Property corner computed (not set)
 - USGS Brass cap
 - Hydant
 - Water valve
 - Water meter
 - Barb wire fence
 - Smooth wire fence
 - Board fence
 - Power line
 - Telephone line
 - Edge of grass
 - Edge of pavement
 - Habitable wall
 - Bluff
 - DLC Line
 - Power pole

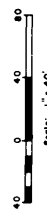
USFS Deeds	Volume	Page
	84	346
	101	93
	182	284
	172	287
	182	181
	192	350



Note: Douglas County's "Old Glide Road" - Douglas County Commissioners' approval, Volume 3, Page 107 (dated 1877, stipulated road but no R/R width was established)

Reference bearings from CS Map File:
M 33-35
M 33-36
M 33-37
M 33-38
M 33-39
M 33-40

Also refer to Oregon State Highway Survey 1939, Drawing No. 32-11-12 & 32-11-13, and also to Oregon State Highway Survey 1931, Drawing No. 10-10-10-101.



Scale: 1" = 40'
Basis of bearings see CS Map File, RM 1, No. 27.