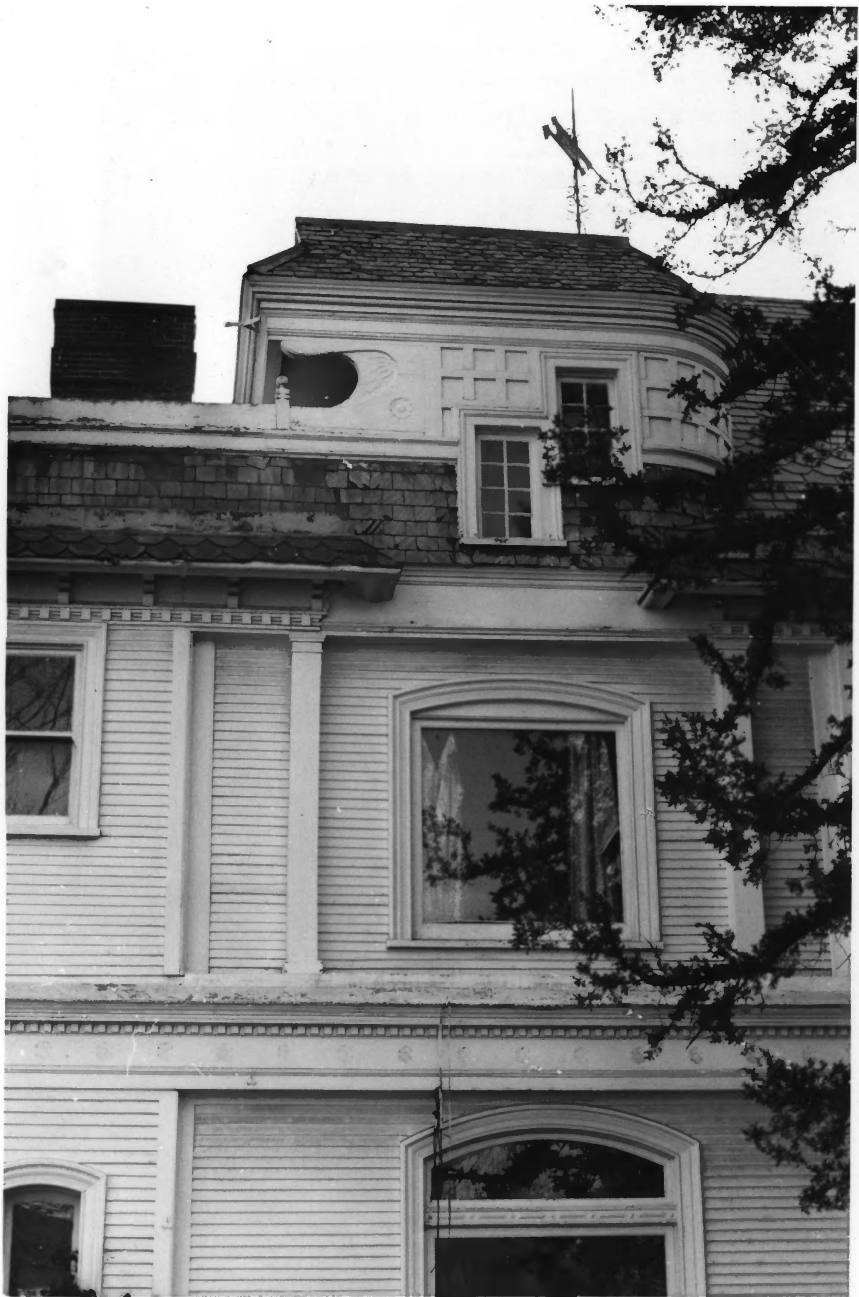




- 1). L.W. Clapp House
- 2). Wichita, Kansas
- 3). Paula Stoner Reed, Preservation Associates, Inc., Sharpsburg, Md.
- 4). January, 1982
- 5). Preservation Associates, Inc. Sharpsburg, Md.
- 6). Front (East) Elevation, N.W. View
- 7). #1



- 1). L.W. Clapp House
- 2). Wichita, Kansas
- 3). Paula Stoner Reed, Preservation Associates, Inc., Sharpsburg, Md
- 4). January, 1982
- 5). Preservation Associates, Inc. Sharpsburg, Md.
- 6). North Elevation, S.W. View
- 7). # 2



- 1) . L.W. Clapp House
- 2) . Wichita, Kansas
- 3) . Paula Stoner Reed, Preservation
Associates, Inc., Sharpsburg, Md.
- 4) . January 1982
- 5) . Preservation Associates, Inc.
Sharpsburg, Md.
- 6) . North Elevation, detail, S. View
- 7) . #3



- 1). L.W. Clapp House
- 2). Wichita, Kansas
- 3). Paula Stoner Reed, Preservation Associates, Inc. Sharpsburg, Md.
- 4). January 1982
- 5). Preservation Associates, Inc. Sharpsburg, Md.
- 6). North & West Elevations, S.E. View
- 7). #4



- 1). L.W. Clapp House
- 2). Wichita, Kansas
- 3). Paula Stoner Reed, Preservation Associates, Inc. Sharpsburg, Md.
- 4). January 1982
- 5). Preservation Associates, Inc. Sharpsburg, Md.
- 6). West and South Elevations, N.E. View
- 7). #5



- 1). L.W. Clapp House
- 2). Wichita, Kansas
- 3). Paula Stoner Reed, Preservation Associates, Inc. Sharpsburg, Md.
- 4). January 1932
- 5). Preservation Associates, Inc. Sharpsburg, Md.
- 6). South Elevation, N. View
- 7). #6



- 1). L.W. Clapp House
- 2). Wichita, Kansas
- 3). Paula Stoner Reed, Preservation
Associates, Inc., Sharpsburg, Md.
- 4). January 1982
- 5). Preservation Associates, Inc.
Sharpsburg, Md.
- 6). Front Door, detail
- 7). #7



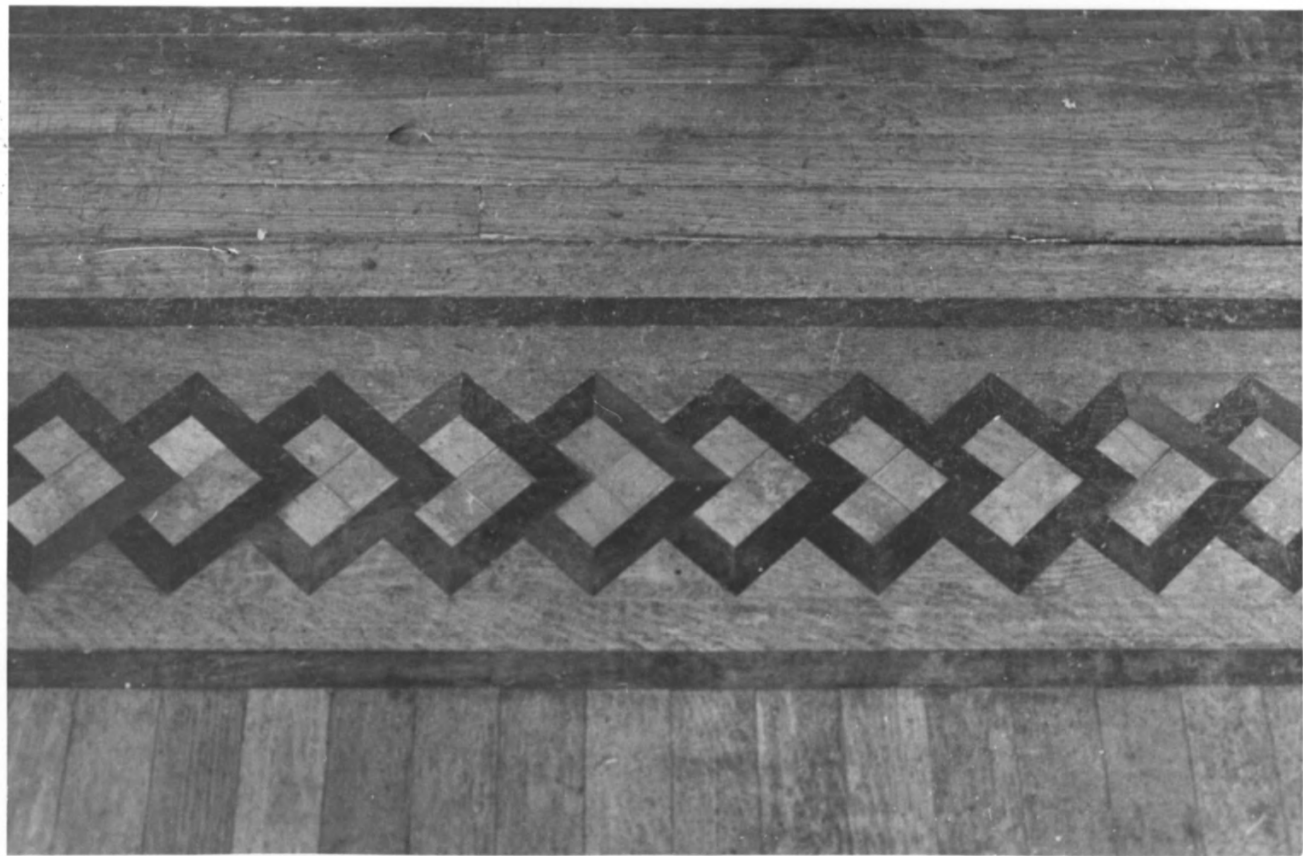
- 1). L.W. Clapp House
- 2). Wichita, Kansas
- 3). Paula Stoner Reed, Preservation Associates, Inc. Sharpsburg, Md.
- 4). January 1982
- 5). Preservation Associates, Inc. Sharpsburg, Md.
- 6). Main Stairway, Parlor
- 7). #3



- 1). L.W. Clapp Jpuse
- 2). Wichita, Kansas
- 3). Paula Stoner Reed, Preservation Associates, Inc., Sharpsburg, Md
- 4). January 1982
- 5). Preservation Associates, Inc., Sharpsburg, Md.
- 6). Fireplace, parlor
- 7). # 9



- 1). L.W. Clapp House
- 2). Wichita, Kansas
- 3). Paula Stoner Reed, Preservation Associates, Inc., Sharpsburg, Md.
- 4). January 1982
- 5). Preservation Associates, Inc. Sharpsburg, Md.
- 6). Newel Post, Main Stairway
- 7). #10



- 1). L.W. Clapp House
- 2). Wichita, Kansas
- 3). Paula Stoner Reed, Preservation Associates, Inc., Sharpsburg, Md.
- 4). January 1982
- 5). Preservation Associates, Inc., Sharpsburg, Md.
- 6). Parquet floor, parlor
- 7). #11



- 1). L.W. Clapp House
- 2). Wichita, Kansas
- 3). Paula Stoner Reed, Preservation Associates, Inc., Sharpsburg, Md.
- 4). January 1982
- 5). Preservation Associates, Inc.
- 6). Dining Room, West Wall
- 7). #12



- 1). L.W. Clapp House
- 2). Wichita, Kansas
- 3). Paula Stoner Reed, Preservation Associates, Inc., Sharpsburg, Md.
- 4). January 1982
- 5). Preservation Associates, Inc. Sharpsburg, Md.
- 6). Lincrusta Walton, dining room
- 7). #13



- 1). L.W. Clapp House
- 2). Wichita, Kansas
- 3). Paula Stoner Reed, Preservation Associates, Inc., Sharpsburg, Md.
- 4). January 1982
- 5). Preservation Associates, Inc., Sharpsburg, Md.
- 6). Servants Stairway
- 7). #14



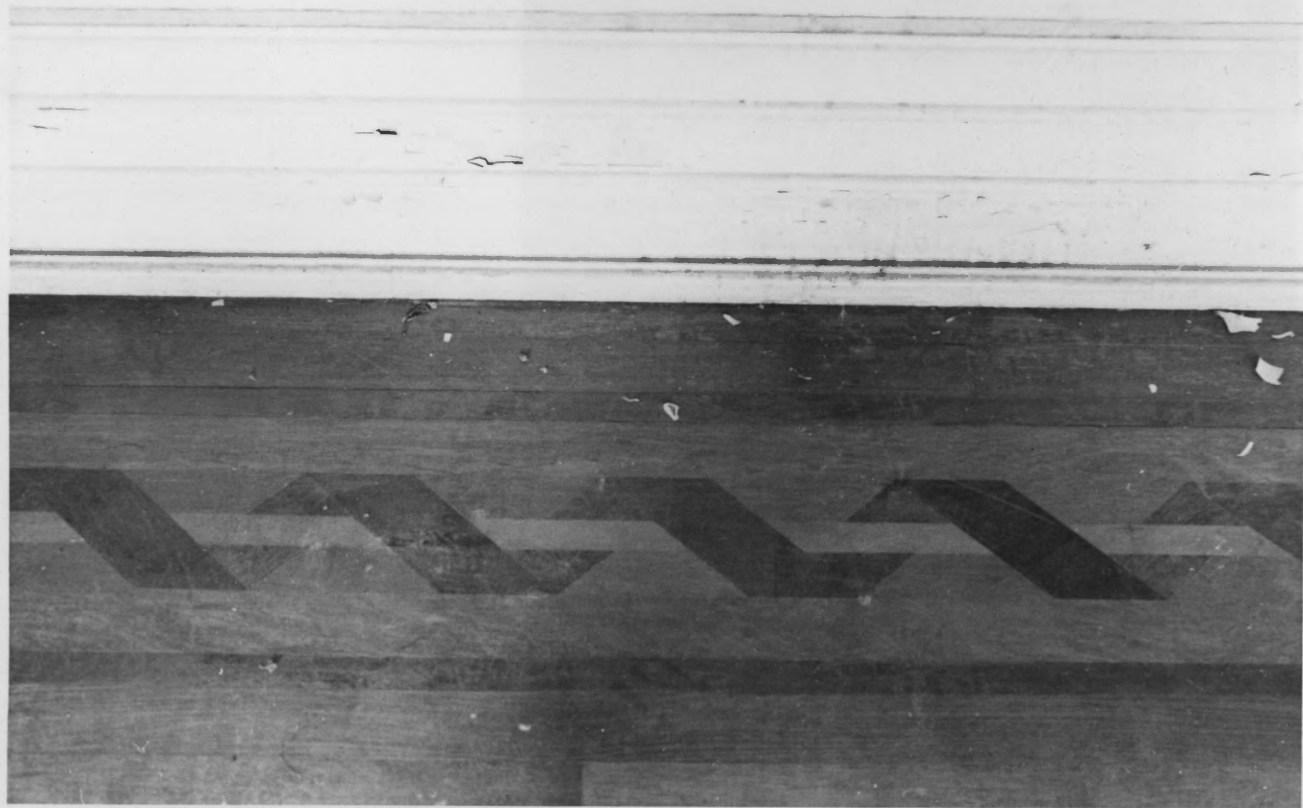
- 1). L.W. Clapp House
- 2). Wichita, Kansas
- 3). Paula Stoner Reed, Preservation Associates, Inc., Sharpsburg, Md.
- 4). January 1982
- 5). Preservation Associates, Inc., Sharpsburg, Md.
- 6). Second Floor Landing, Main Stairway
- 7). #15



- 1). L.W. Clapp House
- 2). Wichita, Kansas
- 3). Paula Stoner Reed, Preservation Associates, Inc., Sharpsburg, Md.
- 4). January 1932
- 5). Preservation Associates, Inc., Sharpsburg, Md.
- 6). Fireplace, East (Master) Bedroom, Second Floor
- 7). #160160, East



- 1). L.W. Clapp House
- 2). Wichita, Kansas
- 3). Paula Stoner Reed, Preservation Associates, Inc., Sharpsburg, Md.
- 4). January 1982
- 5). Preservation Associates, Inc., Sharpsburg, Md.
- 6). Bathroom, adjoining Master Bedroom
Second Floor
- 7). #17



- 1). L.W. Clapp House
- 2). Wichita, Kansas
- 3). Paula Stoner Reed, Preservation Associates, Inc., Sharpsburg, Md.
- 4). January 1982
- 5). Preservation Associates, Inc., Sharpsburg, Md.
- 6). Parquet Floor, Rear Bedroom, Second Floor
- 7). # 13