



UNITED STATES DEPARTMENT OF THE INTERIOR  
NATIONAL PARK SERVICE

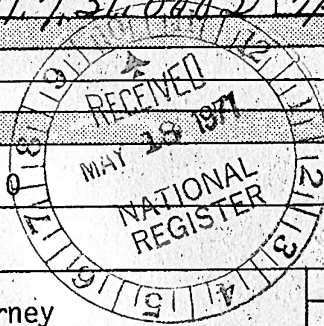
NATIONAL REGISTER OF HISTORIC PLACES  
PROPERTY PHOTOGRAPH FORM

(Type all entries - attach to or enclose with photograph)

STATE Nebraska	
COUNTY Kearney	
FOR NPS USE ONLY	
ENTRY NUMBER 71.7.36.044.3	DATE 7/3/77

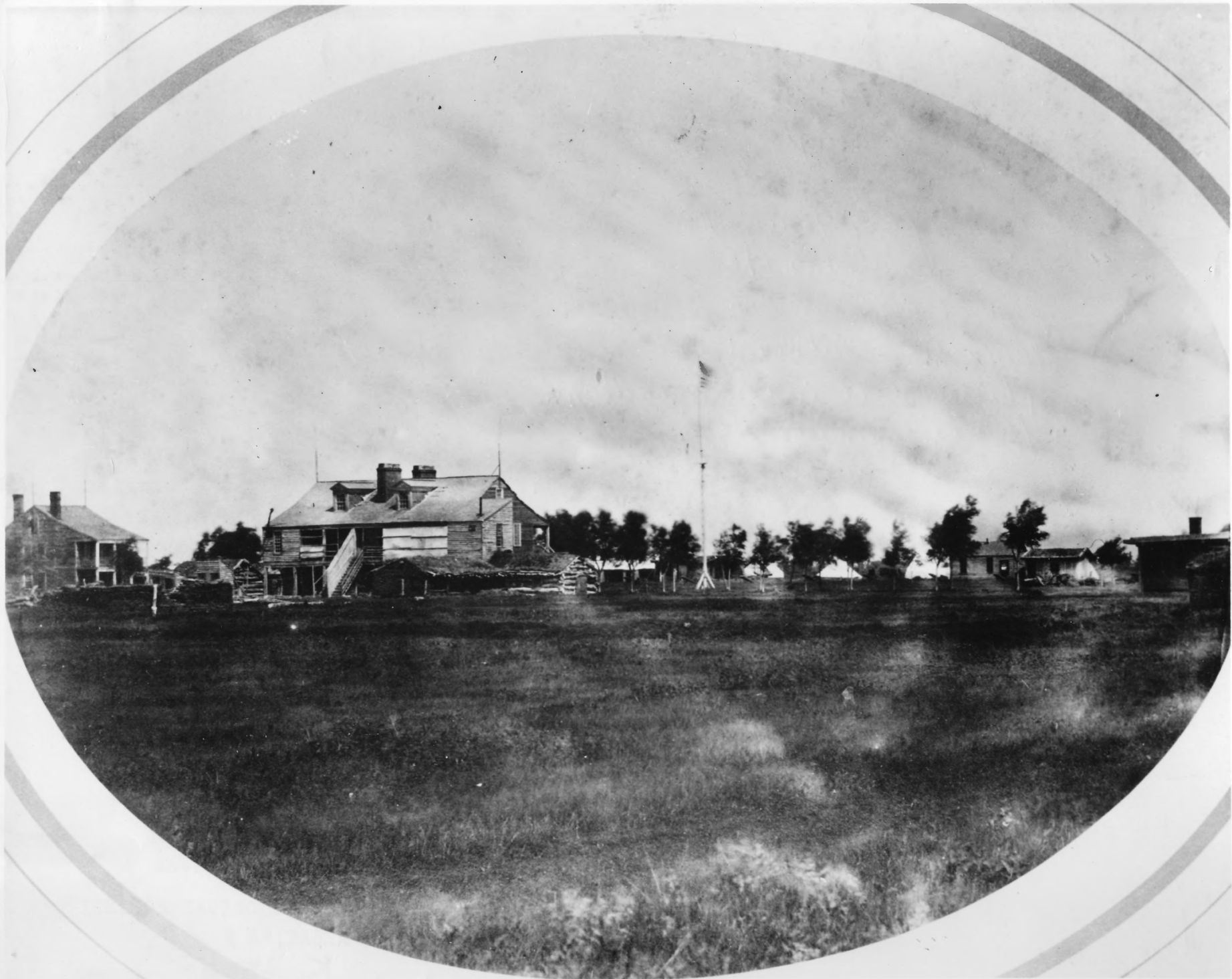
SEE INSTRUCTIONS

<b>1. NAME</b>			
COMMON:	Fort Kearny		
AND/OR HISTORIC:			
<b>2. LOCATION</b>			
STREET AND NUMBER:	2 miles west of Newark on Nebraska 10		
CITY OR TOWN:	Newark vicinity		
STATE:	Nebraska	CODE 31	COUNTY: Kearney
			CODE 099
<b>3. PHOTO REFERENCE</b>			
PHOTO CREDIT:	Nebraska State Historical Society		
DATE OF PHOTO:	1964		
NEGATIVE FILED AT:	Photo Collection, Nebraska State Historical Society 1500 "R" Street, Lincoln, Nebraska 68508		
<b>4. IDENTIFICATION</b>			
DESCRIBE VIEW, DIRECTION, ETC.			
Fort Kearny - view from the north, showing the excavated blacksmith-carpenter shop in the foreground and the reconstructed Fort Mitchel stockade in the background.			



PROPERTY OF THE NATIONAL REGISTER

SRNT-347



UNITED STATES DEPARTMENT OF THE INTERIOR  
NATIONAL PARK SERVICE

NATIONAL REGISTER OF HISTORIC PLACES

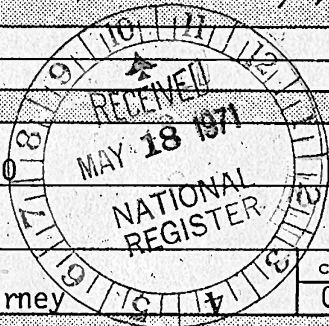
PROPERTY PHOTOGRAPH FORM

(Type all entries - attach to or enclose with photograph)

STATE Nebraska	
COUNTY Kearney	
FOR NPS USE ONLY	
ENTRY NUMBER 71,731,0002	DATE 7/3/71

SEE INSTRUCTIONS

<b>1. NAME</b>			
COMMON:		Fort Kearny	
AND/OR HISTORIC:			
<b>2. LOCATION</b>			
STREET AND NUMBER:			
2 miles west of Newark on Nebraska 10			
CITY OR TOWN:			
Newark vicinity			
STATE:	CODE	COUNTY:	CODE
Nebraska	31	Kearney	099
<b>3. PHOTO REFERENCE</b>			
PHOTO CREDIT:			
Library of Congress Collections			
DATE OF PHOTO:			
1858			
NEGATIVE FILED AT:			
Library of Congress Washington, D. C.			
<b>4. IDENTIFICATION</b>			
DESCRIBE VIEW, DIRECTION, ETC.			
Fort Kearny - view towards the parade grounds from the southeast. On the extreme left is the ca. 1850-51 Commanding Officers Quarters (razed). To the left of center is the ca. 1849-50 Officers' (razed).			



PROPERTY OF THE NATIONAL REGISTER

PK-24-55



UNITED STATES DEPARTMENT OF THE INTERIOR  
NATIONAL PARK SERVICE

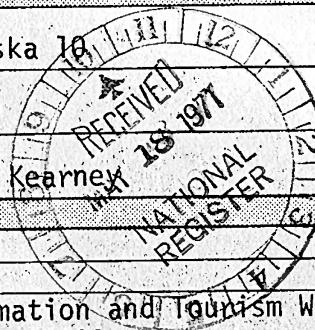
NATIONAL REGISTER OF HISTORIC PLACES  
PROPERTY PHOTOGRAPH FORM

(Type all entries - attach to or enclose with photograph)

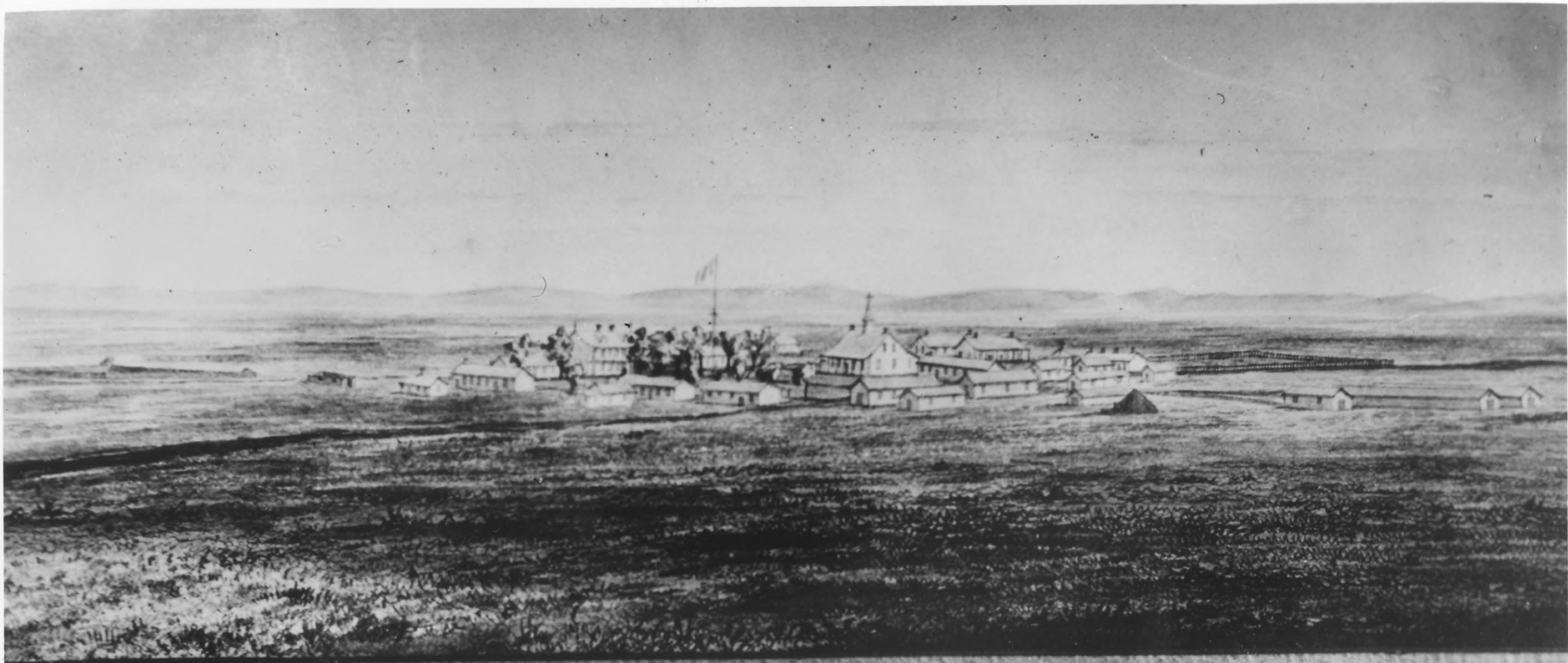
STATE Nebraska	
COUNTY Kearney	
FOR NPS USE ONLY	
ENTRY NUMBER 71.7.31.0002	DATE 7/2/71

SEE INSTRUCTIONS

<b>1. NAME</b>			
COMMON:	Fort Kearny		
AND/OR HISTORIC:			
<b>2. LOCATION</b>			
STREET AND NUMBER: 2 miles west of Newark on Nebraska 16			
CITY OR TOWN: Newark vicinity			
STATE: Nebraska	CODE 31	COUNTY: Kearney	CODE 099
<b>3. PHOTO REFERENCE</b>			
PHOTO CREDIT:	Nebraska Game Commission		
DATE OF PHOTO:	1967		
NEGATIVE FILED AT: Nebraska Game Commission, Information and Tourism Wildlife Building, State Fairgrounds, Lincoln, Nebraska 68509			
<b>4. IDENTIFICATION</b>			
DESCRIBE VIEW, DIRECTION, ETC. Fort Kearny - aerial view from the south. Wooded area is 40-acre Fort Kearny State Park. Reconstructed Fort Mitchel stockade is south of the center of the park.			



PROPERTY OF THE NATIONAL REGISTER



*Fort Kearney, Neb.  
View from N.E. 1870*

(4)

UNITED STATES DEPARTMENT OF THE INTERIOR  
NATIONAL PARK SERVICE

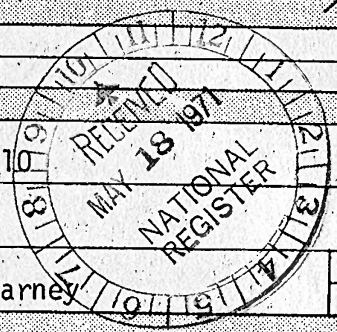
**NATIONAL REGISTER OF HISTORIC PLACES  
PROPERTY PHOTOGRAPH FORM**

*(Type all entries - attach to or enclose with photograph)*

STATE Nebraska	
COUNTY Kearney	
FOR NPS USE ONLY	
ENTRY NUMBER 71.7.31.0002	DATE 7/5/71

SEE INSTRUCTIONS

<b>1. NAME</b>			
COMMON: Fort Kearny		AND/OR HISTORIC:	
<b>2. LOCATION</b>			
STREET AND NUMBER: 2 miles west of Newark on Nebraska 1			
CITY OR TOWN: Newark vicinity			
STATE: Nebraska	CODE: 31	COUNTY: Kearney	CODE: 099
<b>3. PHOTO REFERENCE</b>			
PHOTO CREDIT: University of Wyoming Library			
DATE OF PHOTO: 1870			
NEGATIVE FILED AT: Photo Collection, Nebraska State Historical Society 1500 "R" Street, Lincoln, Nebraska 68508			
<b>4. IDENTIFICATION</b>			
DESCRIBE VIEW, DIRECTION, ETC: Fort Kearny - view from the northeast, copy of a painting at the University of Wyoming Library.			



**PROPERTY OF THE NATIONAL REGISTER**

NEBRASKA STATE HISTORICAL SOCIETY  
Painting date 1870

Credit:  
University of Wyoming Library  
Laramie, Wyo